

## EDITOR'S CORNER

Later this year, or early next year, readers will see some changes in the appearance of this journal, and of our sister publication *Latin American Antiquity*. Two innovations begin now. Both journals are printing the most recent table of contents from the sister journal at the back of each issue—one positive legacy of the discussions last year concerning journal merger. On a special basis (and, I must add, with funding from authors or other sources) we will be including color images in some of our issues. I hope you will enjoy the special section on the organization of production in Chaco Canyon in this issue; I believe the eight color plates it contains are our first since a photo of trade beads over 60 years ago (Ferguson 1940:5). On the basis of papers now being scheduled for the next two issues you will be seeing more use of color soon.

—TIMOTHY A. KOHLER

### References Cited

Ferguson, A. L. L.

1940 An Ossuary Near Piscataway Creek with a Report on the Skeletal Remains by T. D. Stewart. *American Antiquity* 6:4–18.

# Alabama

THE UNIVERSITY OF ALABAMA PRESS

ORDERS (773) 568-1550 OR 800-621-8476 FAX ORDERS 773-660-2235

## Sun Circles and Human Hands

**The Southeastern Indians - Art and Industries**

EDITED BY EMMA LILA FUNDABURK AND

MARY DOUGLASS FUNDABURK FOREMAN

NEW FOREWORD BY VERNON JAMES KNIGHT JR.

"An extraordinarily attractive and useful book. For the first time the arts and crafts of the Southeastern Indians are adequately illustrated."

—R. B. Woodbury, Editor, *American Antiquity*

"Designed for the popular reader, the book is also indispensable as a handy reference for the professional anthropologist."

—Matthew W. Stirling, Former Director of the Bureau of American Ethnology,  
Smithsonian Institution

ISBN 0-8173-1077-0 \$29.95 paper



## From Quarry to Cornfield

**The Political Economy of Mississippian Hoe Production**

CHARLES R. COBB

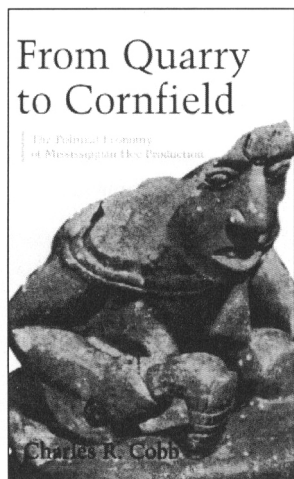
"Cobb offers keen insight on the debate over production in Mississippian chiefdoms...how surplus labor was mobilized without exploitation and how the motives that guided producers of Mill Creek hoes were as varied as the producers themselves."

—Kenneth Sassaman, University of Florida

"This book makes a strong contribution to the ongoing discussion of Mississippian lifeways, and those who study Mississippian societies will find this work of extreme interest. The inclusion of data on the Dillow Ridge site makes this book a must-have...."

—Philip Carr, University of South Alabama

ISBN 0-8173-1050-9 \$29.95 paper



## Excavations at Wickliffe Mounds

KIT W. WESLER

WITH A FOREWORD BY VICTORIA G. FORTNER

"Wesler et al. summarize knowledge gained from the most intensive site excavation in western Kentucky. The text-plus-disk format permits presentation of an unusually readable summary plus a wealth of primary information about this Mississippian mound center. Wesler's book will be indispensable to the interested layman and professional archaeologist alike."

—Charles H. McNutt, University of Memphis

ISBN 0-8173-1064-9 \$39.95 paper and CD