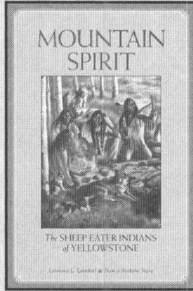
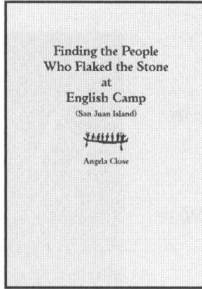


**MOUNTAIN SPIRIT:
THE SHEEP EATERS
OF YELLOWSTONE**



4 maps,
40 photos,
8 color
illustrations
Cloth \$50.00
Paper \$19.95

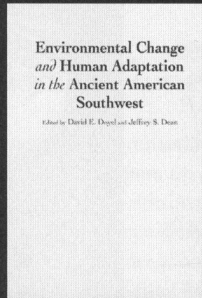
Lawrence L. Loendorf and Nancy Medaris Stone
Mountain Spirit discusses the Shoshone group known as Tukudika, or Sheep Eaters. This illustrated volume gives a vivid picture of the vanished way of life of a people whose accomplishments have been largely ignored in histories of Native Peoples.



1 map,
57 figures
Cloth \$45.00

**FINDING THE PEOPLE WHO FLAKED
THE STONE AT ENGLISH CAMP**

Angela E. Close
Angela E. Close uses a fine-grained study to critique American approaches to lithic analysis. Her approach is based on *chaîne opératoire analysis*, which applied here attempts to trace the life-histories of all artifacts in an assemblage from raw material procurement to discard and entry in to the archaeological record. This approach is aimed explicitly at the people behind the artifacts.



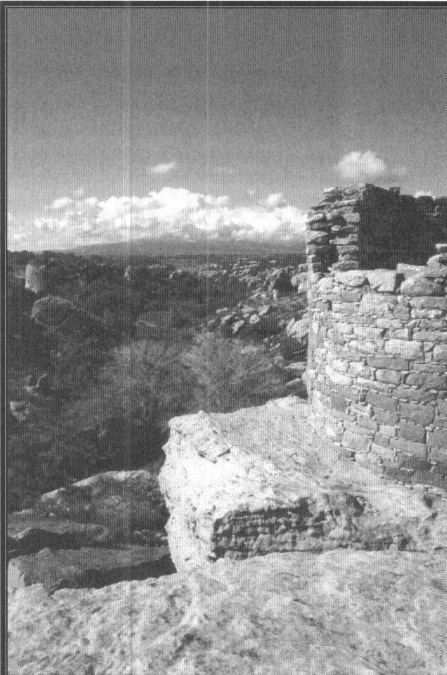
20 maps, 63 figures
Cloth \$45.00

**ENVIRONMENTAL CHANGE AND
HUMAN ADAPTATION IN THE
ANCIENT AMERICAN SOUTHWEST**

Edited by David E. Doyel and Jeffrey S. Dean
This volume makes significant contributions to southwestern prehistory, settlement pattern studies, agriculture, behavioral ecology, paleo-environmental reconstruction, and statistical and computer-aided modeling.

THE UNIVERSITY OF UTAH PRESS

Order online from www.uofupress.com
or dial 1.800.621.2736



**INTELLIGENT BOOKS
on topics that matter
— SAR Press**

The Mesa Verde World
edited by David Grant Noble

The Archaeology of Colonial Encounters
edited by Gil J. Stein

Copán
edited by E. Wyllys Andrews and William L. Fash

The Archaeology of Chaco Canyon
edited by Stephen H. Lekson

A Catalyst for Ideas
edited by Vernon L. Scarborough

A Space Syntax Analysis of Arroyo Hondo Pueblo, New Mexico by Jason S. Shapiro

SAR PRESS · School of American Research

1-888-390-6070 · fax 1-505-954-7241 · bkorders@sarsf.org · www.press.sarweb.org

ARTICLES

- 3 States and Households:
The Social Organization of Terrace Agriculture in
Postclassic Mixteca Alta, Oaxaca, Mexico
Verónica Pérez Rodríguez
- 23 Specialized Production of San Martín Orange Ware
at Teotihuacan, Mexico
Kristin S. Sullivan
- 54 Methodological Issues in the Provenance
Investigation of Early Formative Mesoamerican
Ceramics
*Hector Neff, Jeffrey Blomster, Michael D.
Glascock, Ronald L. Bishop, M. James Blackman,
Michael D. Coe, George L. Cowgill, Richard A.
Diehl, Stephen Houston, Arthur A. Joyce, Carl P.
Lipo, Barbara L. Stark, and Marcus Winter*

REPORTS

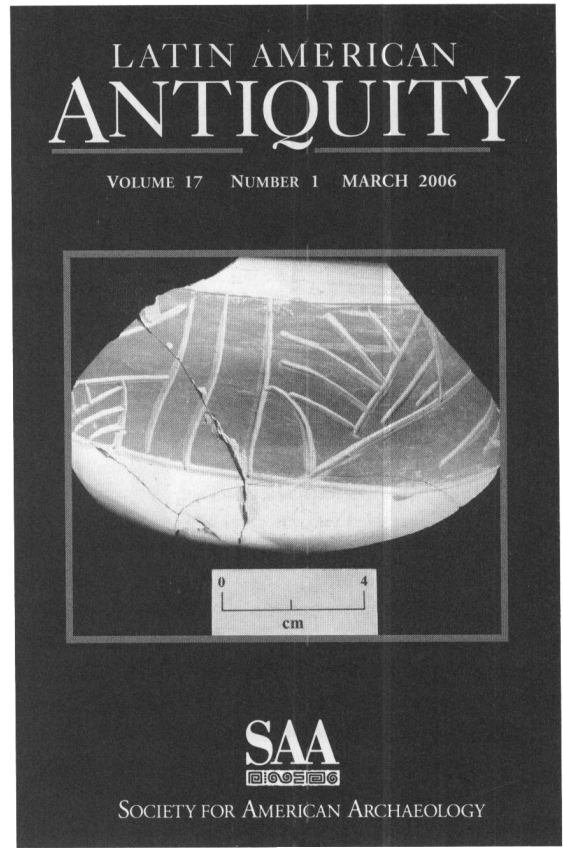
- 77 Elemental Analysis of Alkalis and Dental Deposits
Associated with Coca Chewing In Ecuador
Douglas H. Ubelaker and Karen E. Stothert

COMMENTS

- 90 On The Logic of Archaeological Inference:
Early Formative Pottery and the Evolution of
Mesoamerican Societies
*Robert J. Sharer, Andrew K. Balkansky, James H.
Burton, Gary M. Feinman, Kent V. Flannery, David
C. Grove, Joyce Marcus, Robert G. Moyle, T.
Douglas Price, Elsa M. Redmond, Robert G. Reynolds, Prudence M. Rice, Charles S. Spencer, James B.
Stoltman, and Jason Yaeger*
- 104 Smokescreens in the Provenance Investigation Of Early Formative Mesoamerican Ceramics
*Hector Neff, Jeffrey Blomster, Michael D. Glascock, Ronald L. Bishop, M. James Blackman, Michael D. Coe,
George L. Cowgill, Ann Cyphers, Richard A. Diehl, Stephen Houston, Arthur A. Joyce, Carl P. Lipo, and
Marcus Winter*

REVIEWS

- 119 Caribbean Paleodemography: Population, Culture History, and Sociopolitical Processes in Ancient Puerto Rico,
by L. Antonio Curet
Ethan E. Cochrane



NOTICE TO AUTHORS

American Antiquity publishes original papers on the archaeology of the New World and on archaeological method, theory, and practice worldwide. Authors of papers on Latin American topics are encouraged to submit their work to *Latin American Antiquity*. Papers on Latin American archaeology addressing broad methodological, theoretical, or comparative issues may be accepted by either journal after consultation with the editors. Authors submit manuscripts to the editor for consideration as ARTICLES, REPORTS, COMMENTS, or FORUM essays. REVIEWS and BOOK NOTES are solicited by the respective associate editor. OBITUARIES should be submitted to the editor, *The SAA Archaeological Record*, for publication (see *SAA Bulletin* March/April 1996, p. 7, for further details).

Authors should submit an original and four copies of their manuscripts, including all figures, tables, references, and notes. Detailed information on policy, style, and technical matters of manuscript preparation is given in the "Editorial Policy, Information for Authors, and Style Guide for *American Antiquity* and *Latin American Antiquity*," which appeared in the October 1992 issue (57:749–770) and can be read on the World Wide Web at <http://www.saa.org/Publications/StyleGuide/styframe.html>.

The editor reserves the right to evaluate manuscripts (with or without peer review) for appropriate subject matter, quality, length, and compliance with the style guide. Manuscripts may be returned to authors if they fail to meet expectations or conform to these guidelines. Manuscripts are evaluated by the editor in consultation with peer referees, as appropriate. The editor has the final responsibility for all decisions regarding manuscripts. The review process generally takes a minimum of two to four months. Authors will be notified as soon as a decision is reached to accept (outright or with revisions) or reject a manuscript.

To ensure the prompt receipt and handling of manuscripts, please send them to the editor: Michael Jochim, 57 Mesa Rd., Department of Anthropology, University of California-Santa Barbara, Santa Barbara, CA 93106-3210.

ARTICLES

- 195 Climate Change and the Archaic to Woodland Transition (3000–2500 Cal B.P.) in the Mississippi River Basin
Tristram R. Kidder
- 233 Pots and Pox: The Identification of Protohistoric Epidemics in the Upper Mississippi Valley
Colin M. Betts
- 261 Bear's Journey and the Study of Ritual in Archaeology
Meghan C. L. Howey and John M. O'Shea
- 283 Food, Meals, and Daily Activities: Food *Habitus* at Neolithic Çatalhöyük
Sonya Atalay and Christine A. Hastorf

REPORTS

- 321 A Folsom Structure in the Colorado Mountains
Mark Stiger
- 353 Projectile Point Shape and Durability: The Effect of Thickness:Length
Joseph Cheshier and Robert L. Kelly
- 365 Anthropological Applications of Ancient DNA: Problems and Prospects
Connie J. Mulligan
- 381 Research Traditions, Public Policy, and the Underdevelopment of Theory in Plains Archaeology: Tracing the Legacy of the Missouri Basin Project
Mark D. Mitchell

COMMENTS

- 397 Comment on Harry's Discussion of Ceramic Specialization and Agricultural Marginality in the Prehistoric U.S. Southwest
David A. Phillips, Jr.

On the Cover: A reconstruction of a winter meal around the oven. Illustrated by John G. Swogger. Copyright Çatalhöyük Research Project. (from "Food, Meals, and Daily Activities: Food Habitus At Neolithic Çatalhöyük," by Sonya Atalay and Christine A. Hastorf, page 307).

∞ The paper used in this publication meets the requirements of ANSI/NISO Z39.48-1992
(Permanence of Paper).