

# Topographic habitat features preferred by the Endangered giant panda *Ailuropoda melanoleuca*: implications for reserve design and management

MING-HAO GONG and YAN-LING SONG

**Abstract** The effect of landscape on populations is of great importance, especially given the number of species inhabiting patchy landscapes. Developments in geographical information systems are facilitating a greater application of spatial analyses to threatened species, such as the Endangered giant panda *Ailuropoda melanoleuca*, for which habitat patchiness and quality are key limiting factors. Of all factors that influence the suitability of habitat for the giant panda, topography is not subject to change. Here, we report a spatial and statistical analysis of the high quality topographic habitat preferred by the giant panda across its stronghold in the Qinling Mountains, China. High quality topographic habitat, as indicated by a combination of elevation, slope and aspect, covers 92,788 ha, accounting for 15% of the current range of the species. The distribution of the giant panda closely follows patterns of topography and areas with patches of high quality topographic habitat are strongly associated with areas supporting greater numbers of giant pandas. However, comparisons between our model and the existing reserve system reveals a number of inadequacies. Some of the reserves contain little high quality topographic habitat and many patches of high quality topographic habitat are unprotected. Given the importance of topography and the decisive role it plays in shaping habitat, landscapes containing high quality topographic features must be a critical consideration in the design of reserves for the giant panda. The existing system of nature reserves is heavily weighted towards judicial and administrative boundaries, to the detriment of other factors such as topography.

**Keywords** *Ailuropoda melanoleuca*, China, conservation network, giant panda, patch, population distribution, topography

## Introduction

Landscape characteristics are critical components of wildlife habitat and geographical analysis of such characteristics is an essential element in wildlife conservation

MING-HAO GONG\* and YAN-LING SONG (Corresponding author) Key Laboratory of Animal Ecology and Conservation Biology, Institute of Zoology, Chinese Academy of Sciences, Beijing 100101, China. E-mail songyl@ioz.ac.cn

\*Also at: The Wildlife Monitoring Center of Chinese State Forestry Administration, Beijing, China

Received 21 December 2009. Revision requested 8 February 2010.  
Accepted 11 June 2010.

(Jenness, 2007). Landscape topography influences the spatial distribution of wildlife (Kie et al., 2002; Boxall et al., 2008) and topographic characteristics are often used to analyse and assess habitat (Jenness, 2004). While the distribution of animals also depends on biotic factors, topography is a stable feature and can be used in initial assessments of habitat suitability and quality. The effect of patterns of abiotic factors on population and community dynamics is of great importance, especially given the number of species inhabiting patchy landscapes (Wiens, 1995; Tilman & Kareiva, 1997; Ricketts, 2001). Developments in geographical information systems (GIS) are facilitating a greater application of spatial analysis to threatened species in cases where habitat patchiness and quality are key limiting factors, such as for the giant panda *Ailuropoda melanoleuca* (Ouyang et al., 2002; Xiao et al., 2004), which is categorized as Endangered on the IUCN Red List (Lu et al., 2008).

Drawing on the concept of elevational migrants Loucks et al. (2003) designed conservation landscapes for the giant panda throughout its stronghold, the Qinling Mountains in China. In a different region, the Qionglai Mountains, Xu et al. (2006) used elevation and slope (elevation is strongly associated with giant panda activity; Liu & Jin, 2008) to identify important linkage areas for giant panda management and conservation. While these and other studies have considered landscape topography to be a critical factor in habitat evaluation (Ouyang et al., 2002), a theoretical framework for this relationship has not been developed and the extent to which topographic factors affect the distribution of the giant panda is unknown. Habitat suitability models based on topographic landscape features should be able to provide a simplified assessment tool for giant panda conservationists and facilitate broader planning.

The giant panda occurs across six major mountain ranges in China: Qinling, Minshan, Qionglai, Liangshan, and Greater and Minor Xiangling Mountains (SFA, 2006). The Qinling Mountains provide critical high-quality habitat for giant pandas, characterized by steep high-altitude slopes and narrow catchments in the north and gentle low altitude slopes and broad open catchments in the south. This area supports a significant proportion of the remaining giant panda population (Pan et al., 1988, 2001; Hu, 2001; SFA, 2006). Studying the relationship between suitable topographic landscape patterns and giant panda distribution in the Qinling Mountains will facilitate the development of a theoretical framework for studies of giant panda habitat

quality and patterns of occurrence. Here, using GIS and statistical methods, we examine the effect of topographic landscape features on giant panda distribution across the species' core habitat. We also assess the existing conservation network in this region and make proposals for optimizing this network to maximize conservation outcomes.

**Study area**

The Qinling Mountains are located in a transitional zone between the northern subtropical and warm temperate zones, form a watershed between the Yangtze and Yellow Rivers, and are also the source of several lesser tributaries. The highest peak is Taibai Mountain at 3,767 m. Three major roads running north-south are located in the east of the study area (national roads 108 and 210 and Xihan expressway). Our study area spans six counties in Shanxi province (Taibai, Zhouzhi, Ningshan, Foping, Yangxian and Liuba), covering an area of 614 km<sup>2</sup>, in which there were c. 271 giant pandas in 2001 (17% of the global wild population; SFA, 2006). This population comprises five subpopulations (Fig. 1): Pingheliang, Jinjiliang, Tianhuashan, Xinglongling-Taibaishan and Niuweihe (Sun et al., 2006). Thirteen nature reserves covering 365,228 ha and encompassing 88% of the Qinling Mountains' panda population (239 of 271 pandas in 2001) have been established to protect the giant panda and its

habitat. This study site is also covered by the giant panda primary conservation network (Yan, 2005; Sun, 2007).

**Methods**

In the Qinling Mountains the giant panda shows a preference for habitat characterized by altitudes of 1,500–2,400 m, slopes of 0–30° and aspects of 67.5–292.5° (Pan et al., 1988, 2001; Ministry of Forestry & WWF, 1989; SFA, 2006; Sun, 2007). We selected the range of these three features as representing high quality topographic habitat and using 1:50,000 WGS 84 UTM topographic maps from China's National Fundamental Geographical Information Centre we created a digital elevation model, with a resolution of 30 × 30 m, for areas inhabited by the giant panda across the Qinling Mountains. Employing the three topographic landscape features we used the spatial analysis function of ArcView v. 3.2 (ESRI, Redlands, USA) to calculate and produce a GIS layer of this high quality topographic habitat.

The third and most recent survey of the giant panda was undertaken during 2000–2001, co-sponsored by China's State Forestry Administration and WWF. The results from this survey were made available in 2004 and final reports published later (SFA, 2006; Sun, 2007). Using giant panda occurrence data based on the longitude and latitude of the sightings, tracks, scats and den sites from this survey we

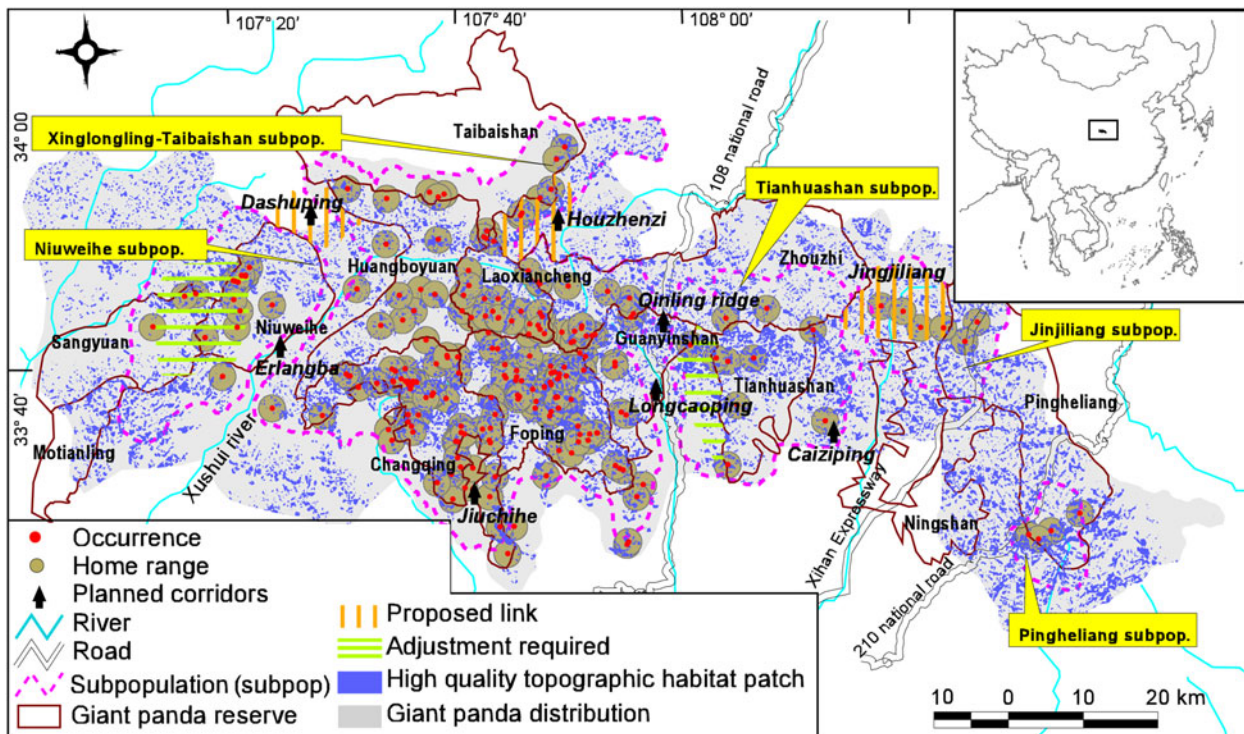


FIG. 1 The study area in Qinling Mountains, indicating the distribution of the giant panda *Ailuropoda melanoleuca*, the locations of the five subpopulations (names in yellow boxes), high quality topographic habitat patches, (see text for definition), occurrence and home range (see text for details) of giant pandas from the 2000–2001 survey (SFA, 2006; Sun, 2007), reserves for the giant panda, and areas of suggested adjustment to the reserve network (see text for further details).

were able to produce a GIS layer of the regional boundaries of areas inhabited by the five subpopulations. Giant pandas forage for 14 hours per day (Pan et al., 2001) and therefore to create a realistic spatial representation of habitat used we overlaid on each panda occurrence point two circles, with radii of 411 and 1,839 m., respectively. Previous work has shown that giant pandas move on average 411 m and 0.53 km<sup>2</sup> per day and have a yearly home range of 10.62 km<sup>2</sup> (radius 1,839 m; Pan et al., 2001). For comparative purposes we present analyses using both these measures of habitat use. Giant pandas are solitary animals and do not traverse large areas except during times of elevational migration. The 2000–2001 survey was conducted from November to June, while giant pandas were occupying altitudes of 1,000–2,100 m and not migrating (Pan, 1995; Sun, 2007). Therefore, the occurrence data used here are not skewed towards higher elevations and represent the broadest occurrence possible.

We overlaid the four GIS layers (high quality topographic habitat, panda occurrence data, daily movement range, yearly home range) to examine the relationships amongst these data. We then ran a canonical correlation analysis on the distribution pattern of high quality topographic habitat patches and giant panda occurrence; this is referred to as the correlation analysis method by Graeme (2000). We used the *Calculate Geometry* function in *ArcGis* to calculate the longitude and latitude of the geometrical centres of every polygon of high quality topography within each giant panda's annual home range. Using the point location occurrences of each giant panda we used *SAS v. 9.1* (SAS Institute Inc., Cary, USA) to examine the correlation between the distribution of high quality topographic patches and presence of giant pandas by longitude and latitude. To determine the quality of the current reserve network *Fragstats v. 3.3* (McGarigal & Marks, 1995; Wu, 2001) was used to calculate the following three landscape indices for high quality topographic patches within the area of each subpopulation and nature reserve: (1) patch density, as number of patches per 100 ha of the total area, (2) the area of the

largest patch and its percentage of the total area of high quality topographic habitat, and (3) mean patch area.

## Results

High quality topographic habitat for the giant panda in the Qinling Mountains was found to cover an area of 92,788 ha; i.e. 15% of the total area where giant pandas occur in these Mountains. The distribution of giant pandas closely follows the distribution of this high quality topographic habitat, and areas with a dense concentration of patches of suitable topography were strongly associated with areas of high giant panda density (Fig. 1). The five subpopulations inhabit 59,934 ha (65%) of the high quality topographic habitat. Of the five subpopulations Xinglongling-Taibaishan occupies the largest area of high quality habitat (31,380 ha), and Pingheliang the smallest (3,637 ha). However, Pingheliang has the largest mean patch area (9.7 ha) of high quality habitat and is the least fragmented subpopulation. The mean patch area of high quality habitat in the region of the Jinjiliang subpopulation is 4.2 ha and the largest patch is 68 ha, an indication that the area inhabited by this subpopulation is highly fragmented. Similarly the region of the Niuweihe subpopulation has a mean patch area of high quality habitat of 5.6 ha and the largest patch is 146 ha, and it is thus also highly fragmented (Table 1).

We found that 61% of giant panda occurrence records were within high quality topographic habitat, and that 91% (2,156 ha) of the daily range of giant pandas lay within high quality topographic habitat patches. The yearly home ranges contained a total of 22,578 ha of high quality topographic habitat. There was a significant positive correlation between the distribution pattern of high quality topographic habitat patches and the population of giant pandas (canonical correlation coefficients,  $\rho_1 = 0.999$ ;  $\rho_2 = 0.995$ ;  $P_1 < 0.0001$ ,  $P_2 < 0.0001$ ; Fig. 1).

The current nature reserve network across the Qinling Mountains includes 51,782 ha of high quality topographic habitat; i.e. 56% of the total area and 14% of the total area of

TABLE 1 The five subpopulations of the giant panda *Ailuropoda melanoleuca* in the Qinling Mountains (Fig. 1), with the area occupied by each and, for patches of high quality topographic habitat for the species (see text for definition), the total area (and percentage of area occupied by the subpopulation in parentheses), density, area of the largest patch (and percentage of the total area of high quality topographic habitat in parentheses), and mean area.

Subpopulation	Area (ha)	High quality topographic habitat			
		Total area, ha (%)	Patch density (no. per 100 ha)	Largest patch, ha (%)	Mean patch area (ha)
Jinjiliang	26,057.9	4,348.0 (16.7)	3.9	68.4 (1.6)	4.2
Niuweihe	53,242.9	8,852.6 (16.6)	3.0	145.9 (1.6)	5.6
Pingheliang	10,667.7	3,637.5 (34.1)	3.5	376.8 (10.4)	9.7
Tianhuashan	59,063.3	11,716.1 (19.8)	3.2	426.9 (3.6)	6.2
Xinglongling-Taibaishan	195,011.3	31,380.0 (16.1)	2.8	282.8 (0.9)	5.8



TABLE 2 The 13 giant panda reserves across the Qinling Mountains (Fig. 1), with the area of each and, for patches of high quality topographic habitat for the species (see text for definition), the total area (and its percentage of reserve area in parentheses), density, area of the largest patch (and percentage of the total area of high quality topographic habitat in parentheses) and mean area, and the number of giant pandas recorded in the 2000–2001 survey (SFA, 2006; Sun, 2007).

Reserve	Area (ha)	High quality topographic habitat				
		Total area, ha (%)	Patch density (no. per 100 ha)	Largest patch, ha (%)	Mean patch area (ha)	No. of giant pandas
Changqing	30,101.9	6,411.7 (21.3)	10.4	262.9 (4.1)	9.6	52
Foping	29,279.8	6,822.2 (23.3)	9.8	341.1 (5.0)	10.2	76
Guanyinshan	16,563.6	3,644.0 (22.0)	12.3	160.3 (4.4)	8.1	8
Huangboyuan	30,597.5	3,702.3 (12.1)	19.6	162.9 (4.4)	5.1	9
Laoxiancheng	12,547.8	1,995.1 (15.9)	14.6	71.8 (3.6)	6.8	28
Motianling	11,018.9	1,223.1 (11.1)	12.8	117.4 (9.6)	7.8	2
Ninshan	23,693.1	2,416.7 (10.2)	15.9	132.9 (5.5)	6.3	1
Niuweihe	22,556.3	3,045.1 (13.5)	16.5	79.2 (2.6)	6.1	18
Pingheliang	38,598.4	7,217.9 (18.7)	12.0	339.2 (4.7)	8.4	5
Sangyuan	22,280.9	1,983.0 (8.9)	19.6	93.2 (4.7)	5.1	3
Taibaishan	54,833.3	1,316.0 (2.4)	28.8	192.1 (14.6)	3.5	11
Tianhuashan	19,772.5	4,310.4 (21.8)	9.9	379.3 (8.8)	10.1	5
Zhouzhi	52,340.1	7,694.0 (14.7)	17.5	115.4 (1.5)	5.7	21

reserves. Because of other terrain features and reserve borders the distribution of suitable topographic habitat is uneven (Table 2). For example, the Foping, Changqing and Guanyinshan Reserves contain relatively high percentages of high quality topographic habitat (23, 21 and 22%, respectively) but the recently established reserves of Ninshan, Motianling and Sangyuan contain only 10, 11 and 9%, respectively, of high quality topographic habitat. There are also large differences in the mean patch size of high quality topographic habitat between reserves. Foping Reserve has a relatively high mean patch size (10.2 ha) and small patch density (9.8 patches per 100 ha) and has little fragmentation. In contrast, Taibaishan Reserve, with a mean patch size of high quality habitat of 3.5 ha and a high patch density of 28.8 patches per 100 ha, is highly fragmented (Table 2).

## Discussion

Habitat connectivity is of critical importance to population growth and recovery, genetic flow, and dispersal and migration (Hargrove et al., 2004). Previous work has attributed the lack of a connection between the giant panda subpopulations of Niuweihe and Xinglongling-Taibaishan to agricultural development and human activity along the Xushui River (Ministry of Forestry & WWF, 1989; Pan et al., 2001). However, our analysis shows that there is no high quality topographic habitat between these subpopulations and the lack of a connection may thus be the consequence of natural topographic barriers (Fig. 1).

The southern part of Laoxiancheng Reserve contains few patches of high quality topographic habitat but nevertheless supports a high density of giant pandas (14 pandas in 30 km<sup>2</sup>), six times greater than the average for the Qinling Mountains (7.8 giant pandas per 100 km<sup>2</sup>; Fig. 1; SFA,

2006). This may explain why more giant pandas have been invading the nearby village and more giant pandas have been injured and are in poor health in this area in recent years (Sohu, 2006a; WWF–China, 2007, 2008; Sohu, 2009). In contrast, large areas of high quality topographic habitat occur in the eastern Qinling Mountains (in the Guanyinshan and Tianhuashan Reserves) and along the Qinling Ridge (Fig. 1) but these areas support few giant pandas. This may be explained by habitat degradation as a result of logging and the construction of roads (Sun, 2007).

The positive correlation between the availability of high quality topographic habitat and the occurrence of giant pandas (91% overlap when using daily range, 100% when using yearly home range) shows that suitable topography is important for giant pandas. Similarly, Loucks et al. (2003) found that areas with a greater number of patches of suitable topography, such as Foping and Changqing Reserves, are dense zones of giant panda habitat, whereas areas with fewer patches of high quality topography, such as the Xushui River catchment, have little high quality panda habitat. There is one discrepancy, however, between our study and that of Loucks et al. (2003): the classification of the area between the subpopulations of Xinglongling-Taibaishan and Tianhuashan. Despite being previously noted as an area without linkage between giant panda subpopulations (Fig. 1), we conclude that, with the availability of dense patches of high quality topographic habitat along Qinling Ridge, this zone should contain good habitat. Extensive bamboo restoration has taken place in this area in recent years following tunnel construction for the 108 national road, and giant panda tracks and scats are now frequently observed there (Sohu, 2006b). Again, this demonstrates that topography is an important component of giant panda habitat and, once other disturbances are

removed, places with suitable topography can be quickly recolonized.

Of all the factors that affect the quality of giant panda habitat, topography is not normally subject to change. Given the role of topography in shaping habitat, landscapes containing ideal topographic features must be a critical consideration in reserve design. The existing system of nature reserves is too heavily weighted towards judicial and administrative boundaries, to the detriment of other factors. As a result, the giant panda conservation network may not fully support conservation goals. For example, whilst several reserves contain little high quality topographic habitat, several contain large areas of such topography. Moreover, some areas contain reasonable levels of high quality topographic habitat and play an important role in dispersal and migration of giant pandas but are not protected by the current reserve system. Some areas previously identified as corridors or sites for linkage, are, according to our analysis, not necessarily of conservation value. Areas such as Erlangba, a section of the 108 national road in Qinling Ridge, Dashuping, Houzhenzi, Longcaoping, Jiuchihe and Caiziping, have been designated as suitable corridor habitat (Fig. 1; Ministry of Forestry & WWF, 1989; Loucks et al., 2003; WWF–China & Academy of Forest Inventory and Planning of Shanxi Province, 2005) but, except for Dashuping, Houzhenzi and Qinling Ridge, no other site contains high quality topographic habitat.

Our findings facilitate a better understanding of giant panda population patterns across the Qinling Mountains. Based on our analysis we believe that conservation of the giant panda needs to have an increased focus on areas with high quality topographic habitat for the species, and we therefore make several recommendations: (1) With little high quality topographic habitat in Sangyuan Reserve, Niuweihe and Sangyuan Reserves should be combined into a single reserve. (2) Tianhuashan Reserve should be extended to cover the patches of suitable topography that lie to the west of the Reserve. (3) Containing poor high quality topographic habitat and only one giant panda, Ninshan Reserve should be treated as a important corridor between the Jinjiliang and Pingheling subpopulations. (4) Three localities that are not included in the protected network, namely Dashuping between the Niuweihe and Xinglongling-Taibaishan subpopulations, Jinjiliang between the Tianhuashan and Jinjiliang subpopulations, and Houzhenzi, with three neighbouring Reserves (Taibaishan, Laoxiancheng and Zhouzhi), should be protected as important linkage zones that could facilitate dispersal and genetic flow. (5) Disturbances from transportation, hydropower development, livestock grazing, collection of herbs and tourism in the eastern part of the study area, particularly in Guanyinshan and Tianhuashan Reserves, should be restricted. (6) The monitoring programme for the giant panda in the southern part of Laoxiancheng Reserve, where high quality topographic

habitat is limited, should be modified to increase the frequency of surveillance and detection, and contingency plans should be put in place to cope with potential issues such as bamboo flowering events and disease epidemics.

Our findings and recommendations are being used in the giant panda conservation programme. For example, Houzhenzi has been listed as a pilot project in a giant panda corridor programme sponsored by WWF and the local government, and the area of Jinjiliang will be included in the giant panda reserve network in the Qinling Mountains by establishing a new reserve. In addition, giant panda habitat is being restored in the eastern part of Qinling Mountains by control of disturbance and planting of bamboo. Although there is as yet no emergency plan for the giant panda the construction of an emergency rescue system for giant pandas was incorporated into the giant panda conservation plan for 2010–2020 by the State Forestry Administration.

## Acknowledgements

We thank Fan Zhiyong, Director of the species department at WWF–China for providing instruction during our study, and Tao Yi, Qi Dunwu, Zhang Hongmao, Zhang Jiahua and Zhang Wei for feedback and assistance. This study was funded by WWF–China (CN0892) and supported by the State Forestry Administration of China. We are grateful to Chai Wansuo and Zeidae for editing this article.

## References

- BOXALL, G., GIANNICO, G. & LI, H. (2008) Landscape topography and the distribution of Lahontan cutthroat trout (*Oncorhynchus clarki henshawi*) in a high desert stream. *Environmental Biology of Fishes*, 82, 71–84.
- GRAEME, S. (2000) Using habitat models to map diversity: pan-African species richness of ticks (Acari: Ixodida). *Journal of Biogeography*, 27, 425–440.
- HARGROVE, W., HOFFMAN, F. & EFROYMSON, R. (2004) A practical map-analysis tool for detecting potential dispersal corridors. *Landscape Ecology*, 20, 361–373.
- HU, J. (2001) *Research on the Giant Panda*. Shanghai Science and Technology Education Press, Shanghai, China. [in Chinese]
- JENNESS, J. (2004) Calculating landscape surface area from digital elevation models. *Wildlife Society Bulletin*, 32, 829–839.
- JENNESS, J. (2007) *Some Thoughts on Analysing Topographic Habitat Characteristics*. Annual Meeting, The Wildlife Society, Arizona and New Mexico Chapters, Albuquerque, USA.
- KIE, J., BOWYER, R., BOROSKI, B., NICHOLSON, M. & LOFT, E. (2002) Landscape heterogeneity at differing scales: effects on spatial distribution of mule deer. *Ecology*, 83, 530–544.
- LIU, X. & JIN, X. (2008) Habitat feature of giant pandas' high-frequency activity areas on the southern slope of the Qinling Mountains and habitat selection by the giant panda. *Chinese Journal of Ecology*, 27, 2123–2128. [in Chinese]
- LOUCKS, C., LÜ, Z., DINERSTEIN, E., WANG, D., FU, D. & WANG, H. (2003) The giant pandas of the Qinling Mountains, China: a case study in designing conservation landscapes for elevational migrants. *Conservation Biology*, 17, 558–565.

- LÜ, Z., WANG, D. & GARSHELIS, D.L. (2008) *Ailuropoda melanoleuca*. In *IUCN Red List of Threatened Species v. 2010.4*. [Http://www.iucnredlist.org](http://www.iucnredlist.org) [accessed 12 January 2011].
- MCGARIGAL, K. & MARKS, B. (1995) *FRAGSTATS: Spatial Pattern Analysis Program for Quantifying Landscape Structure*. US Forest Service General Technical Report PNW, Portland, USA.
- MINISTRY OF FORESTRY & WWF (1989) *National Conservation Management Plan for the Giant Panda and Its Habitat*. Ministry of Forestry, Beijing, China, and WWF International, Gland, Switzerland.
- OUYANG, Z., LI, Z., LIU, J., LIU, J., AN, L., ZHANG, H. et al. (2002) The recovery processes of giant panda habitat in Wolong Nature Reserve, Sichuan, China. *Acta Ecologica Sinica*, 22, 1840–1849. [in Chinese]
- PAN, W. (1995) New hope for China's giant pandas. *National Geographic*, 193, 100–115.
- PAN, W., GAO, Z. & LÜ, Z. (1988) *The Giant Panda's Natural Refuge in the Qinling Mountains*. Peking University Press, Beijing, China. [in Chinese]
- PAN, W., LÜ, Z., ZHU, X., WANG, D., WANG, H., LONG, Y. et al. (2001) *A Chance for Lasting Survival*. Peking University Press, Beijing, China. [in Chinese]
- RICKETTS, T. (2001) The matrix matters: effective isolation in fragmented landscapes. *American Naturalist*, 158, 87–99.
- SFA (STATE FORESTRY ADMINISTRATION) (2006) *The Third National Survey Report on Giant Panda in China*. Chinese Science Press House, Beijing, China. [in Chinese]
- SOHU (2006a) *The Emergency Rescue for an Injured Giant Panda*. Sohu.com, Beijing, China. [Http://news.sohu.com/20060703/n244056793.shtml](http://news.sohu.com/20060703/n244056793.shtml) [accessed 10 November 2009]. [in Chinese]
- SOHU (2006b) *The Last Hope of Giant Panda Survival*. Sohu.com, Beijing, China. [Http://news.sohu.com/20060607/n243598544.shtml](http://news.sohu.com/20060607/n243598544.shtml) [accessed 10 November 2009]. [in Chinese]
- SOHU (2009) *Wild Giant Pandas Climbing the Walls of Laoxiancheng*. Sohu.com, Beijing, China. [Http://news.sohu.com/20090430/n263710727.shtml](http://news.sohu.com/20090430/n263710727.shtml) [accessed 10 November 2009]. [in Chinese]
- SUN, C. (2007) *The Third Survey Report On Giant Panda in Shanxi Province*. Xian Map Press, Xian, China. [in Chinese]
- SUN, C., ZHANG, Z. & JIN, X. (2006) Qinling Mountains' giant panda subpopulation size and distribution. *Journal of Shanxi Normal University*, 34, 163–167. [in Chinese]
- TILMAN, D. & KAREIVA, P. (1997) *Spatial Ecology: The Role of Space in Population Dynamics and Interspecific Interactions*. Princeton University Press, Princeton, USA.
- WIENS, J. (1995) Landscape mosaics and ecological theory. In *Mosaic Landscapes and Ecological Processes* (eds L. Hansson, L. Fahrig & G. Merriam), pp. 1–26. Chapman & Hall, London, UK.
- WU, J. (2001) *Landscape Ecology: Pattern, Process, Scale and Hierarchy*, 2nd edition. Higher Education Press, Beijing, China. [in Chinese]
- WWF–CHINA (2007) *A Injured Giant Panda was Rescued in Laoxiancheng Reserve of Shanxi Province*. WWF–China office, Beijing, China. [Http://www.wwfchina.org/wwfpress/presscenter/pressdetail.shtm?id=605](http://www.wwfchina.org/wwfpress/presscenter/pressdetail.shtm?id=605) [accessed 10 November 2009]. [in Chinese]
- WWF–CHINA (2008) *One Year Old Giant Panda Got Rescued after Trapped in Rock*. WWF–China office, Beijing, China. [Http://www.wwfchina.org/wwfpress/presscenter/pressdetail.shtm?id=682](http://www.wwfchina.org/wwfpress/presscenter/pressdetail.shtm?id=682) [accessed 10 November 2009]. [in Chinese]
- WWF–CHINA & ACADEMY OF FOREST INVENTORY AND PLANNING OF SHANXI PROVINCE (2005) *The Construction Plan for a Giant Panda Corridor in Qinling Mountains*. Unpublished Report. Xi'an, China. [in Chinese]
- XIAO, Y., OUYANG, Z., ZHU, C., ZHAO, J., HE, G. & WANG, X. (2004) An assessment of giant panda (*Ailuropoda melanoleuca*) habitat stressors in Minshan region. *Acta Ecologica Sinica*, 24, 1373–1379. [in Chinese]
- XU, W., OUYANG, Z., ANDRÉS, V., ZHENG, H., LIU, J. & XIAO, Y. (2006) Designing a conservation plan for protecting the habitat for giant pandas in the Qionglai mountain range, China. *Diversity and Distributions*, 12, 610–619.
- YAN, X. (2005) Status, challenge and prospect of wild giant pandas. *Acta Theriologica Sinica*, 25, 402–406. [in Chinese]

### Biographical sketches

MING-HAO GONG has been studying the giant panda and its conservation for many years and is responsible for reserve design and the implementation of management plans. YAN-LING SONG'S research interests focus on the conservation of threatened wildlife, behaviour and animal ecology. Her research group has undertaken projects on threatened deer, takin and the giant panda.