

FORUMS

- 421 Social Practice, Method, and Some Problems of Field Archaeology
Åsa Berggren and Ian Hodder
- 435 Geophysical Surveys as Landscape Archaeology
Kenneth L. Kvamme

ARTICLES

- 459 Cultural Transmission and Stochastic Network Growth
R. Alexander Bentley and Stephen J. Shennan
- 487 A Neutral Model of Stone Raw Material Procurement
P. Jeffrey Brantingham
- 511 Modifying Pottery and Kivas at Chaco: Pentimento, Restoration, or Renewal?
Patricia L. Crown and W. H. Wills

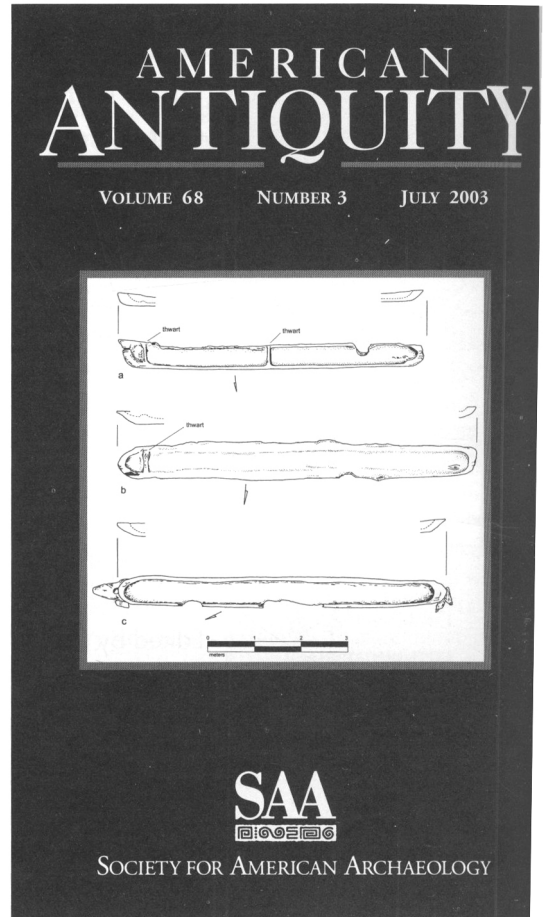
REPORTS

- 533 Archaic Period Canoes from Newnans Lake, Florida
Ryan J. Wheeler, James J. Miller, Ray M. McGee, Donna Ruhl, Brenda Swan, and Melissa Memory
- 552 Patterns of Elite Faunal Utilization at Moundville, Alabama
H. Edwin Jackson and Susan L. Scott

COMMENTS

- 573 What Is Evolution? A Response to Bamforth
Michael J. O'Brien, R. Lee Lyman, and Robert D. Leonard
- 581 What Is Archaeology? (Or, Confusion, Sound, and Fury, Signifying...)
Douglas B. Bamforth

REVIEWS AND BOOK NOTES



NOTICE TO AUTHORS

Latin American Antiquity publishes original papers on the archaeology, prehistory, and ethnohistory of Latin America, i.e., Mesoamerica, Central America, and South America, together with culturally affiliated adjacent regions. Papers may also treat more general theoretical and methodological issues with relevance to Latin America. Authors submit manuscripts to the editor for consideration as ARTICLES or REPORTS in English, Spanish, or Portuguese. Authors should submit an original and three copies of their manuscripts (including all figures, tables, references, and notes), along with an abstract in both English and Spanish. Detailed information on policy, style, and technical matters of manuscript preparation is given in English in the "Editorial Policy, Information for Authors, and Style Guide for *American Antiquity* and *Latin American Antiquity*," which appeared in September 1992 (vol. 3, no. 3) and in Spanish in "Código editorial, información para autores y guía estilística para *American Antiquity* and *Latin American Antiquity*," which appeared in July 1997 (vol. 8, no. 2). This information is also available in English through the World Wide Web at <http://www.saa.org/Publications/StyleGuide/styframe.html>. For additional information, updates, or clarification, consult the managing editor at the SAA office in Washington, D.C.

BOARD OF DIRECTORS OF THE SOCIETY FOR AMERICAN ARCHAEOLOGY

Officers

President: LYNNE SEBASTIAN, SRI Foundation, 333 Rio Rancho Dr. NE, Suite 103, Rio Rancho, NM 87124

Secretary: DEAN SNOW, Department of Anthropology, Pennsylvania State University, 409 Carpenter Bldg., University Park, PA 16802

Treasurer: DONALD J. WEIR, CCRG Inc, 2530 Spring Arbor Rd., Jackson, MI 49203-3602

Treasurer-Elect: GEORGE H. ODELL, 600 S College Ave., Department of Anthropology, University of Tulsa, Tulsa, OK 74104-3126

Board Members-at-Large

LUIS ALBERTO BORRERO, CONICET, Tucuman 2146-Piso 7, Buenos Aires 1050, Argentina

JON CZAPLICKI, Bureau of Reclamation, PXAO-1500 Phoenix Area Office, PO Box 81169, Phoenix, AZ 85069-1169

PATRICIA A GILMAN, Department of Anthropology, University of Oklahoma, Norman, OK 73019-0001

MADONNA MOSS, Department of Anthropology, 1218 University of Oregon, Eugene, OR 97403-1205

NELLY ROBLES GARCIA, Pino Suarez 715, Oaxaca OAX 68000, Mexico

JOE WATKINS, PO Box 30992, Albuquerque, NM 87190-0992

Ex-Officio Board Member

TOBI A. BRIMSEK, Society for American Archaeology, 900 Second St NE, Suite 12

ARTICLES

- 243 From Stewards to Bureaucrats: Architecture and Information Flow at Chan Chan, Peru
John R. Topic
- 275 Late Classic Maya Water Management and Community Organization At Copan, Honduras
Karla L. Davis-Salazar

REPORTS

- 301 Source Attribution and the Utilization of Obsidian in the Maya Area
Hattula Moholy-Nagy
- 311 First Report of a Newly Discovered Paleoindian Quarry Site on The Isthmus Of Panama
Georges A. Pearson
- 323 Comments on the Mainland Origins of the Preceramic Cultures of the Greater Antilles
Richard T. Callaghan
- 339 *Chenopodium* Cultivation and Formative Period Agriculture at Chiripa, Bolivia
Maria C. Bruno and William T. Whitehead

REVIEWS

- 356 Stories in Red and Black: Pictorial Histories of the Aztec and Mixtec, by Elizabeth Hill Boone
Joyce Marcus
- 357 Zapotec Science: Farming and Food in the Northern Sierra of Oaxaca, by Roberto J. González
Jeffery W. Bentley
- 359 The First Americans: The Pleistocene Colonization of the New World. Memoirs of the California Academy of Sciences no. 27, Wattis Symposium Series in Anthropology, edited by Nina Jablonski
Tania Andrade Lima
- 361 Les salines préhispaniques du bassin de Sayula (occident du Mexique): Milieu et techniques, by Catherine Liot
Eduardo Williams
- 362 **Mayan Glyphs for Aficionados and Aspiring Epigraphers**
Reading the Maya Glyphs, by Michael D. Coe and Mark Van Stone; How to Read Maya Hieroglyphs, by John Montgomery; and A Thematic Bibliography of Ancient Maya Writing, by Stephen D. Houston, Zachary Nelson
David F. Mora-Marín
- 365 Handbook of Mesoamerican Mythology: A Guide to the Gods, Heroes, Rituals, and Beliefs of Mexico and Central America, by Kay Almere Read and Jason J. González
Hilary E. Kahn

On the Cover: Lithic artifacts from Nieto quarry/workshop (from "First Report of a Newly Discovered Paleoindian Quarry Site on The Isthmus Of Panama," by Georges A. Pearson, page 315).

Ⓢ The paper used in this publication meets the requirements of ANSI/NISO Z39.48-1992 (Permanence of Paper).