

Economical, Universal Application Rapid Freezing Workstation

EMS-002 Cryo Workstation

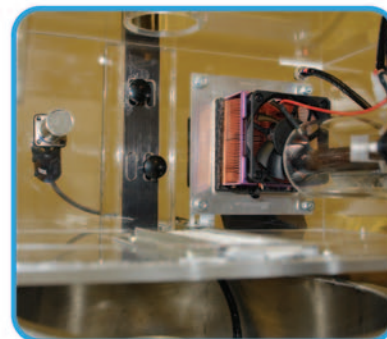
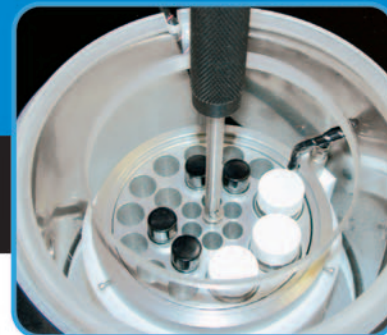
Allows for a reliable,
virtually routine freezing
of biological samples.

Applications:

- Cryo-fixation of virus partials
- Cryo-fixation of isolated or assembled macromolecules
- Cryo-fixation of emulsions paints and polymers
- Cryo-fixation of suspension and tissues for Cryo-techniques such as freeze fracture/etch, freeze drying, freeze substitution.

Advantages:

- Economical, universal application rapid freezing unit.
- Plunge freezing with temperature controlled cryogen.
- Frozen samples handled under cold dry nitrogen atmosphere.
- Rapid set up and easy use.
- Reproducible results.
- High and low set points for cryogen control.



For more information, please visit our
website at www.emsdiasum.com

**Electron
Microscopy
Sciences**

P.O. Box 550 • 1560 Industry Rd. • Hatfield, Pa 19440
Tel: (215) 412-8400 • Fax: (215) 412-8450
email: sgkcck@aol.com • website: www.emsdiasum.com

Optional Accessories

- Freeze Substitution Module
- Cryo-TEM Transfer Interface
- Climate Controlled Environmental Chamber
- Metal Mirror Impact Freezing Fixture
- Diamond Anvil
- Automatic Liquid Nitrogen Filling
- Propane Transfer System
- Freeze Forceps
- Muscle Biopsy Clamps

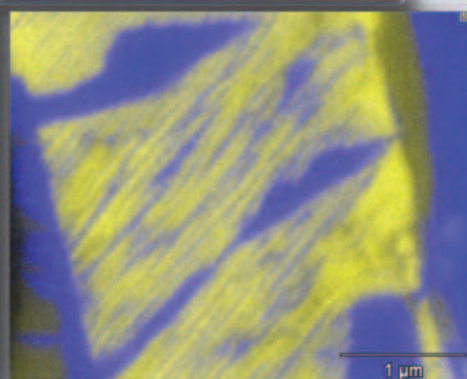
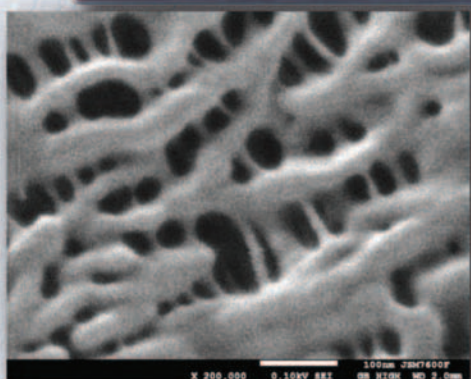
You asked. We listened.

Ultrahigh Resolution

Analytical Performance

Ultralow kV

Uncoated stretched polypropylene

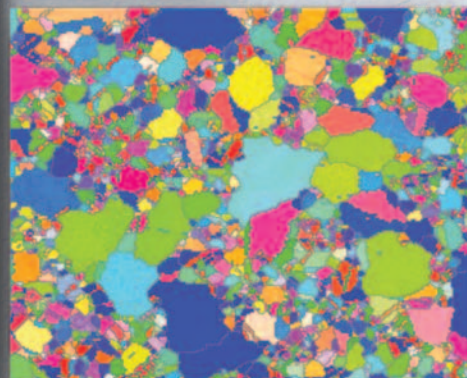


EDS/WDS

EDS map of TiO₂ in FeO_x with <100nm spatial resolution 30,000x

LABe

1-3 nm twinning in mineral BSE image

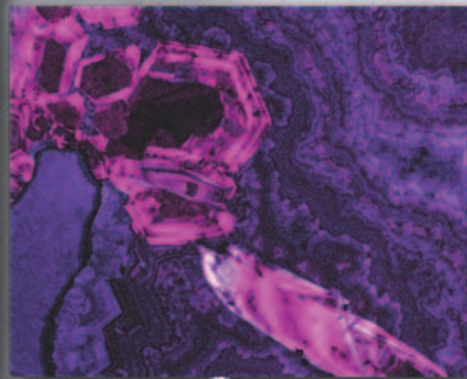
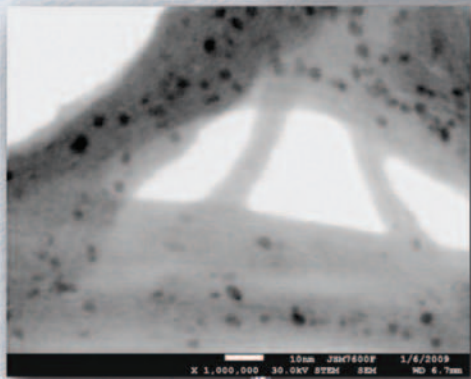


EBSD

Orientation map of Ni alloy

STEM

CNT with 1-3 nm Pt nanoparticles



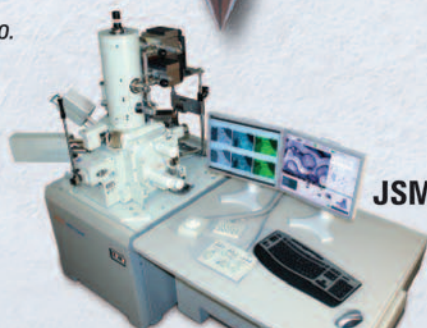
CL

Quartz and zinc oxide

Seeing is believing!

Contact salesinfo@jeol.com to arrange a demo.
For more information or to view a brochure visit www.jeolusa.com/7600F.

All magnifications as printed at 4 x 5 in.



JSM-7600F

Another
**Extreme
Imaging**
Solution

JEOL

Stability • Performance • Productivity
www.jeolusa.com • salesinfo@jeol.com
978-535-5900

Thermal FEG SEM