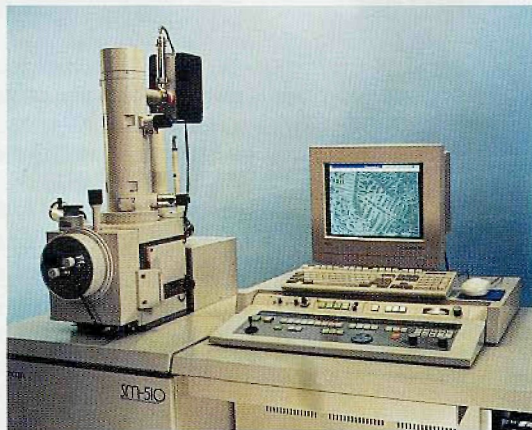


NEW PRODUCT NEWS



Topcon Announces New Model 510 LaB₆ Scanning Electron Microscope

The Topcon Technologies 510 SEM can be purchased as a stand-alone SEM, or the user can add integrated EDX, advanced image processing, or a WET-SEM option for moist or non-conducting samples - now or in the future - at affordable prices. Topcon's unique Dual Control™ and truly easy operation make this SEM ideal for laboratory analysis or production support.

All Topcon SEMs feature the unique Dual Control, which allows the operator to use either the computer keyboard and mouse or the operating panel - independently or simultaneously - depending on the individual's operating style. The manual controls are always available, even if the computer crashes, and all automatic controls can be mechanically overridden. The SEM operates under Windows™ and is computer-hardware independent, allowing users to upgrade or change their computer hardware configuration at any time. Optional features available on the 510 include image processing for clear, crisp, noise-free images at 512, 1024, or 2048-pixel resolution; a completely integrated energy dispersive (x-ray) spectrometer (EDS) for elemental analysis; and WET SEM for moist or non-conducting surfaces.

Topcon's new 510 SEM uses the higher spatial resolution LaB₆ electron source in both the standard and WET SEM modes without any degradation in the LaB₆ lifetime and offers up to 60 Å resolution on non-conducting samples and 30 Å resolution on conducting samples. The 510 is equipped with automatic valving, which simplifies the SEM operation by controlling the pressure in the chamber automatically. If the sample outgases, the vacuum system still maintains constant pressure. System prices start at \$87,950. Topcon Technologies: (201)261-5410, Fax: (201)262-1504, Circle Reader Inquiry #21

Peak Instruments announces new versions of Windows and UNIX software for their APeX and IbeX WDS systems, incorporating a Dynamic Link Library (DDL), allowing outside control of spectrometer functions from EDS or user-supplied software packages. Peak has also announced two new versions of the Topometrix Observer, now compatible with the designated models of the JEOL and Electroscan SEMs.

Peak Instruments: (609)737-8133, Fax: (609)737-1724. Circle Reader Inquiry # 20

Produce photographic quality color digital images from your monochrome camera easily and economically. Advanced Imaging Concepts' Virtual Color comprises hardware and software products that can combine three sequential, color-filtered acquisitions from a monochrome camera into a single color image.

Virtual Color is ideal for those with varied digital imaging requirements. Use it to capture and archive high-resolution color digital images, to work with an optical microscope, and to do away with the need for multiple cameras. Virtual Color can capture monochrome images at any wavelength, and it can run on several types of cameras.

Virtual Color comprises five main elements - a camera, frame grabber, filter selector, computer, and our software. It is available for use with 2K x 2K, 1.3K x 1K, and 640 x 480 images. Virtual Color is available in several configurations, including turnkey systems and compatible components. Advanced Imaging Concepts: (609)921-3629. Fax: (908)274-1974. Circle Reader Inquiry #23

JEOL has announced the 'Defect Review Automation' software module running on the JSM-6401FXV field emission SEM, configured with the X-Vision UNIX based automation system. The package is fully integrated into the X-Vision and allows for the accurate location and characterization of defects identified from optical review tools such as those manufactured by KLA and Tencor. X-Vision is well suited for this application because the UNIX multi-tasking and networking capabilities simplify the transfer of defect files to and from the DMS (Defect Management System).

JEOL: (508)535-5900, Fax: (508)536-2205
Circle Reader Inquiry #24

Leica changes the world of stereomicroscopy with another revolutionary stereomicroscope, the LEICA MZ12, the only stereomicroscope with 12.5:1 zoom.

The LEICA MZ12 opens up new application possibilities. The continuous observation of three dimensional objects from lowest to highest magnification uncovers previously hidden information. For the first time, the magnification of an object can be increased without interruption from 8x to 100x in a single zooming movement. The LEICA MZ12 has a wider zoom range and a higher maximum magnification than any other stereomicroscope on the market. A complete range of main objectives are available, allowing a maximum magnification of 640x.

The LEICA MZ12 is modular in design and is easily configured to meet your application needs:

- Optics carrier, objective, binocular tube, eyepieces, focusing drive, stand and illuminator are modular and can be combined as required.
- Accessories are available for recording, measuring, polarized light work, and dual station viewing.
- The LEICA 2 digital video system enables spatial images to be transmitted live, or archived, post-processed and transferred to external computers.

Leica, Inc.: (708)405-0123, Fax: (708)405-0147. Circle Reader Inquiry #22



USED EQUIPMENT FOR SALE

☐ MILITARY RESEARCH LAB IS CLOSING - Military contractor is selling at drastically reduced prices its Sorvall ultramicrotome, refrigerated and benchtop microtomes, sliding microtome, Tissue Tech embedding center, stereo microscopes, Joyce Loebel microdensitometer and LECO sulfur analyzer. For specification sheets call (202)544-0836

☐ SEMs, TEMs, LMs, EDS, Evaporators, Sputter coaters, Ultra microtomes, Histology-Darkroom, Lab equipment and more. Supply us with your wanted list. Microscopy Laboratories: (908)747-6228.

☐ McCrone Accessories & Components Equipment Sale: Olympus BH2 Accessories, Objectives, Video Cameras, and Comparison Bridges. For a complete list of used equipment and pricing call Bill Fester or Chuck Zona at (800)622-8122.

☐ Anyone want a fully functional ancient Siemens 101 TEM for free (you pay costs of removal and shipping)? Lots of spare parts for anyone still running one of these instruments. Thomas E. Phillips, Univ. of MO: (314)882-4712.

☐ Hitachi high resolution (1.6 Å) top entry Model H-500 TEM, excellent condition, ready for demo and delivery, Retiring. Best offer and no reasonable price refused. Microscopy Research Labs: (908)526-6310.

☐ NanoScope II system with contact AFM and/or STM, NanoScope/Nikon TopView optical microscope for small AFMs, NanoScope AFM and STM scanners, NanoScope liquid cells, NanoScope probe tips, Burleigh Nanopositioner (Inchworm). Don Chernoff, Advanced Surface Microscopy: (317)251-1364.

☐ Image Analysis: Modules from two Quantimet 720 systems available.

SEM: Two JEOL JSM-U-3 SEMs being broken up for parts. What do you need?

Andy Blackwood, Structure Probe: (203)2424-SP1

☐ Philips 300 and 400 TEMs, 9100 EDAX system and Leitz TAS image analysis system. Contact Dr. Roisen: (502)587-8810.

☐ JEOL 1200exII Conventional TEM (straight TEM with no add-ons). Five years old, always under service contract, and in mint condition. We invite bids. Larry Hawkey: (919)681-6425.

☐ JEOL 100CX Scanning TEM. In perfect working condition until turned off in July, 1994. Specimen holders for heating-cooling, double tilt, and rotation are included. Make an offer. Beth Trend: (612)624-1365.

☐ JEOL JSM 35G SEM. Purchased in 1973 and well maintained. Dr. Dan Nathanson: (617)638-5590.

☐ 197 Balzers Freeze Etch Unit. Bids will close on Oct. 13. For more info, contact Ginger Baker: (405)744-6765.

☐ Zeiss 10CA TEM in top condition with Coolwell® closed-loop cooling system, recently overhauled rotary and diffusion pumps. All necessary accessories, including extra filaments. Asking \$35,000 but will accept best offer.

Also - complete darkroom setup (call for list) plus Leica Cryocut 1800 Cryostat, Sorvall MT-2B Ultramicrotome, LKD 7800 Glass Knifebreaker, and Durst L1200 EM Enlarger with accessories. Sold as a package or separately.

Stephen Grayson: (415)617-9327.

☐ Hitachi 405 SEM. About 12 years old. Hitachi parts and service available. \$7,000 or best offer. (410)671-8273.

☐ Philips 300. Peter Jordan: (909)694-1836

☐ Edwards Model CR106P/E2M12 evaporator with baffle plate and tripod. Nine years old and used very little. 12½" x 8" Pyrex bell jar and LN₂ trap. Should pump down to 1 x 10⁻⁶ torr in approx. 15 minutes. Purchased for \$13,000, asking \$5,000. Paul Kenney: (413)786-9322.

☐ Sorvall/Dupont MT6000 and MT2B ultrami-

crotores, GKM Glass Knife Maker, JB4 microtome, Reconditioned, complete with accessories and warranty. Bill McGee: (315)451-1404.

☐ Over 100 scopes and stereo scopes, and parts, available and priced below wholesale - plus Wolfe SW10C24 and SW10L optical heads only, no eyepieces (\$85 each.), Wolfe WCDV-3L (\$325), Wolfe MHBKCY Medical Microscope (\$1000). Mary Strange (800)227-1150.

☐ Light SM Lux HL microscope with a transmitter and an incident light, pair of 10X eye pieces and 4 objectives. Asking \$2,600

Zeiss Metal. Microscope with an incident light, pair of 12.5 eye pieces, 4 objectives and a transformer. Asking \$2,600

Simon Goldberg: (214)690-0185.

☐ TN2000 EDS/Automation System from a 9-wavelength-dispersive plus EDS system with stage and scanning spectrometer (3) automation. Complete with all software, manuals, PDP 11/23 computer and terminal/keyboard. Working fine on removal from system 2 months ago. Missing only the HV bias protection module and the EDS pulse processor. \$3000 or best offer.

Also - Rigaku 60KV 3000W X-ray generator, model 4053A3, for use in X-ray diffraction and/or fluorescence systems - or for required high-voltage, high current source

Daniel E. Sampson: (408)459-4992.

☐ Philips EM300 TEM looking for a home, cheap. Needs Hg-Diff pump upgrade (~\$5K from Philips). Many spare parts included. Bob Roberts: (602)965-4512.

☐ Zeiss EM10 and EM 109 Electron Microscopes. Currently operational and in excellent condition. Karl H. Berger: (908)370-8082.

☐ Siemens 1A electron microscope (vintage circa 1966). This EM is in perfect condition and takes marvellous pictures still. Take away free. Helga Kolb: (801)585-6510.

USED EQUIPMENT WANTED

☐ Parts and manuals for the LKB 14800 CRYO kit. After years of storage, we wish to use the Cryo Kit. Nan Laudenslager: (610)250-3094.

☐ Late Model Used (~3 years old or newer) SEM. Will be used for metallurgical/polymer work and should have EDS, thin window, LAB6, digital control, etc. Bob Barnard: (216)266-6810

☐ Working components for a Zeiss photomicroscope camera system (I or II). May be interested in entire photomicroscope if price is reasonable. D. Hall: ((705)748-1486.

☐ Used microscopy equipment, basically everything related to TEM and SEM would be of interest to us except microscopes. Dr. Peter Molnar

(Hungary): Tel./Fax: 36-52-417-063.

☐ Polarized Light Microscope. Will trade other equivalent value lab equipment for it. Large variety to choose from. James Baer: (913)296-8333.

Classified Advertising Rates - Used Equipment For Sale/Wanted, Employment Available/Wanted: \$25 plus \$1 per word.