

## Population genetics of *Mycobacterium tuberculosis* complex in Scotland analysed by pulsed-field gel electrophoresis

E. S. OLSON<sup>1</sup>\*, K. J. FORBES<sup>1</sup>, B. WATT<sup>2</sup> AND T. H. PENNINGTON<sup>1</sup>

<sup>1</sup>Department of Medical Microbiology, University of Aberdeen, Aberdeen AB9 2ZD

<sup>2</sup>Scottish Mycobacteria Reference Laboratory, City Hospital, Edinburgh EH10 5SB

(Accepted 2 October 1994)

### SUMMARY

The results of typing of 121 strains in the *Mycobacterium tuberculosis* complex by PFGE are presented. Every isolate from patients in Scotland over a 3-month period for *M. tuberculosis* and for 1 year for *M. bovis* were included along with several laboratory strains including those of BCG. The PFGE results suggest that the population structure of all the strains in this complex is distinctly simple with limited genetic diversity and also suggest that *M. bovis* is not a distinct species.

### INTRODUCTION

The incidence of tuberculosis in Scotland has declined over the last two centuries [1]. By 1987 notifications had fallen to 561. Since then they have remained at around this level. In 1992 there were 529 notifications, 280 of these cases were confirmed bacteriologically. Of these 93·5% were in natives of the United Kingdom. 5·7% of isolates were drug resistant with two-thirds of these only resistant to isoniazid [2].

Typing methods for *Mycobacterium tuberculosis* complex isolates have suffered from a lack of discriminatory power. Phenotyping has allowed the division of the complex into four species *M. tuberculosis*, *M. bovis*, *M. microti* and *M. africanum* [3] but is of limited use in epidemiological studies [4–9]. Phage typing of *M. tuberculosis* produces only four major groups [10]. Pyrolysis mass spectrometry produced similar divisions to conventional phenotyping [11]. High performance liquid chromatography has only been successful at discriminating between the vaccine strain BCG and wild type organisms [12]. SDS-PAGE is useful for speciation of strains but of limited value in subdividing species [7, 13–17]. Conventional genomic DNA digests produce patterns with almost complete similarity although sufficient differences have been noted to be of some use in epidemiological work [14, 16, 17–22]. The most successful typing methods use repetitive DNA sequences such as the transposable element *IS6110* as markers [23–25]. These markers although successful for epidemiological purposes, particularly over short time periods, are not ideal for population genetic studies as they can vary rapidly in number and position in the chromosome.

\* Author for correspondence and reprints: Dr E. S. Olson, Department of Medical Microbiology, St Bartholomew's Hospital, West Smithfield, London EC1A 7BE.

Infrequent-cutting restriction endonucleases digest chromosomal DNA into a small number of large fragments which can be resolved by pulsed-field gel electrophoresis (PFGE) into simple banding patterns which are ideal for use as a genotyping method. PFGE has in practice been found to be one of the most discriminatory typing methods for bacteria and a useful tool for chromosome mapping [26]. PFGE has been successfully used to type many bacterial species including *Mycobacterium paratuberculosis* [27]. In 1991 it was decided to develop PFGE for *M. tuberculosis* to investigate the population structure of the organism in Scotland and to estimate the genetic diversity of this organism by analysing strains from every patient in Scotland over a limited period.

Initial work concentrated on the use of the infrequent cutting enzymes *Xba* I and *Dra* I. When these enzymes started to give conflicting results it was decided to also include the more frequent cutting enzyme *Hind* III. As our results with PFGE differed dramatically from the experiences of others with *IS6110* Southern blotting it was decided to apply this method also to our collection of strains.

#### METHODS

All clinical isolates had been referred to the Scottish Mycobacteria Reference Laboratory, Edinburgh. The collection of 121 unique strains analysed comprised 99 strains of *M. tuberculosis* collected between 1 August 1992 and 1 December 1992 (one isolate from every culture-positive patient in Scotland between these dates) and 12 strains of *M. bovis* of human origin collected between 1 August 1992 and 1 August 1993 all from different patients (again every culture positive patient in Scotland between these dates), also a type strain of *M. tuberculosis*-H37Ra, three clinical isolates of *M. bovis* BCG from the collection of the Scottish Mycobacteria Reference Laboratory and six BCG vaccine strains (BCG's Brazil, Copenhagen, Dakar, Glaxo, Pasteur and USSR) which were kindly donated by Dr J. Dale [28]. Repeat isolates from several patients were studied in a pilot study but as no variation was found between isolates separated in time or from different body sites in the same patient it was decided to analyse only one isolate per patient in the main study.

DNA was extracted and digested using a modification of the method of Zhang and colleagues [29]. Briefly, strains were cultured in Middelbrook 7H9 broth in a 50 ml centrifuge tube at 37 °C for 4 weeks without shaking or aeration. The cultures were checked for bacterial contamination, heat-killed in a waterbath at 80 °C for 30 min and left to cool. The cultures were centrifuged at 3000 g for 25 min and the pellet stored at -20 °C. To extract the DNA the pellets were suspended in 1 ml of 10 mM Tris-EDTA (pH 8.0) containing 2 mg of lysozyme; incubated at 37 °C for 4 h; then mixed with 1 ml of 1.5% low-melting point agarose and dispensed into 200 µl insert formers. The inserts were incubated at 55 °C in 2 ml of 0.5 M-DTA (pH 8.0) with 1% sodium dodecyl sulphate and 1 mg/ml proteinase K for 24 h then stored at 4 °C. Proteinase K in the inserts was removed by washing six times in 20 ml of 10 mM Tris-EDTA (pH 8.0) at room temperature. The samples were stored at 4 °C until digestion was performed.

For restriction endonuclease analysis a suitably sized portion of each insert was incubated at 37 °C for 2 h in a predigestion solution of 1 × restriction enzyme

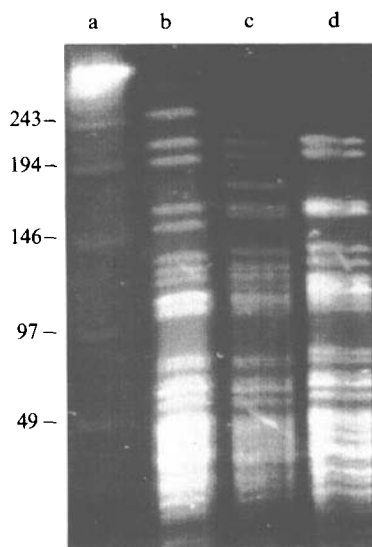


Fig. 1. *Xba* I digest patterns. Patterns I (lane b), II (lane c) and III (lane d). Size standard (lane a) is lambda ladder with fragments of 49, 97, 146, 194 and 243 kb from the bottom of the gel.

buffer, 1 mM dithiothreitol, 50  $\mu$ g/ml skim milk powder to a final volume of 200  $\mu$ l (including insert portion). Digestion was in fresh solution containing 50U of restriction enzyme (*Dra* I, *Xba* I or *Hind* III), incubated for 20 h at 37 °C and terminated by incubation in 0.5 M-EDTA (pH 8.0) containing 1% sodium lauroyl sarkosinate at 50 °C for 2 h.

Samples were electrophoresed in 1% agarose in 0.5  $\times$  Tris-borate -EDTA buffer and run in a CHEF DR-II system at 14 °C at 200 V. The pulse times were ramped from 3–12 sec for *Xba* I for 20 h, for *Hind* III 2–5 seconds for 20 h and for *Dra* I 5–15 sec for 12 h then 60–70 sec for 6 h. Gels were stained with ethidium bromide and photographed using UV transillumination. Size standards were polymerized bacteriophage lambda DNA or *Saccharomyces cerevisiae* chromosomal DNA. Results were compared visually.

For Southern blotting a modification of the method of van Embden and colleagues (24) was used. A portion of insert was digested with *Pvu* II by the method above and then loaded into a conventional gel and run until smallest size band of the digoxigenin labelled lambda/*Hind* III marker had migrated 6.6 cm. The gel was then transferred onto a nylon membrane and probed using a digoxigenin labelled probe. Detection was with the chemiluminescent digoxigenin detection system and photographic film.

## RESULTS

*Xba* I digests showed very little variation. One hundred strains had an indistinguishable banding pattern including strain H37Ra and the 12 *M. bovis* (pattern II in Fig. 1) The BCG Glaxo and two clinical isolates of BCG produced a similar but distinct pattern (Pattern I in Fig. 1). Four isolates of *M. tuberculosis*

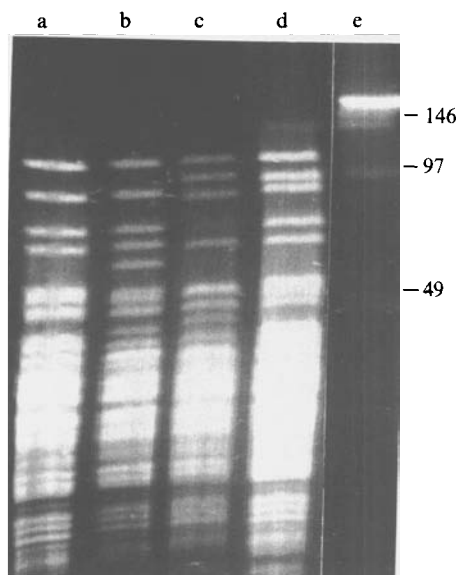


Fig. 2. *Hind* III digest patterns. Patterns a (lane a), b (lane b), c (lane c) and d (lane d). Size standard (lane e) lambda ladder-sizes of fragments 49, 97 and 146 kb from the bottom of the gel.

Table 1. *Combinations of Hind III and Xba I digest patterns of isolates*

<i>Xba</i> I pattern	<i>Hind</i> III pattern			
	a	b	c	d
I	3	0	0	0
II	80	17	3	0
III	8	0	1	1

Patterns I–III and a–d are illustrated in Figures 1 and 2 respectively. The numbers are the number of isolates with that particular combination of digest patterns.

Seven *Hind* III pattern a isolates failed to digest with *Xba* I and one isolate failed to digest with either enzyme.

and six BCG strains- Brazil, Copenhagen, Dakar, Pasteur, USSR and a clinical isolate of BCG gave another similar pattern (Pattern III in Fig. 1). Eight strains failed to produce a banding pattern on electrophoresis.

*Hind* III digestion gave four very similar patterns. 98 strains produced pattern a. This group contained strain H37Ra, the 12 *M. bovis* and all nine isolates of BCG, 15 isolates pattern b, 3 pattern c and one pattern d (see Fig. 2). One strain failed to produce a banding pattern.

The *Xba* I and *Hind* III results are combined in Table 1. With *Dra* I 75 strains (including the six BCG vaccine strains) on electrophoresis gave smears of DNA or no digestion at all. Thirty-one strains of *M. tuberculosis* gave patterns of poor quality but with every strain apparently different (data not shown). Eleven strains of *M. bovis* produced banding patterns which were indistinguishable. The twelfth isolate of *M. bovis* differed by one band from this pattern. The three clinical isolates of the BCG were indistinguishable but the pattern was different from those of *M. bovis*.

By *IS6110* Southern blotting 26 of the strains of *M. tuberculosis* produced a visible banding pattern. Each of these strains had a unique *IS6110* fingerprint pattern.

#### DISCUSSION

Since our work began PFGE methods have also been developed for *Mycobacterium fortuitum* [30], *M. tuberculosis* [29–32], *M. avium* [33–35], *M. chelonae* and *M. abscessus* [36].

Digestion of genomic DNA by *Hind* III and *Xba* I gave indistinguishable patterns for most strains. Calculation of the similarity indices by Dice analysis [37] for the most diverse strains gives indices of > 97% when compared with the main group of strains. A useful comparison can be made with *Mycobacterium avium*, a slow-growing environmental mycobacterium which appears to be as genetically diverse as *Escherichia coli* [35]. *M. avium* isolates with differences of this order of magnitude when analysed by PFGE were not be considered to be genotypically distinct by Von Reyn and colleagues [38].

The results of *Dra* I digestion for *M. tuberculosis* differed considerably from the results with other enzymes. A *Dra* I restriction site (TTTAAA) occurs within the insertion sequence *IS6110* at 328 nt. from the 5' end [39], and since this insertion sequence is transposable with a varied number of copies and sites in the genome of different strains it is likely that the differences in the banding patterns with *Dra* I are due to variations in the number and position of copies of *IS6110*. The lower level of diversity found among *M. bovis* and the BCG strains probably reflects the lower copy number and less positional variation of the insertion sequence found in these species [28, 40]. There was no correlation between success with *Dra* I PFGE and the results of the Southern blotting. The high failure rate with Southern blotting in our hands probably reflects the fact that PFGE DNA preparations contain less DNA than those made by using the conventional protocol for *IS6110* typing.

We are unable to distinguish *M. bovis* isolates from those of *M. tuberculosis*. These results provide further evidence in support of the view that *M. bovis* is not a distinct species: DNA hybridization studies have shown 100% homology between *M. tuberculosis*, *M. bovis*, *M. africanum* and *M. microti* [41, 42]. Conventional DNA restriction endonuclease analysis showed almost complete similarity between the species [18, 19, 21, 22]. A study looking for variation in the 16S-to-23S rDNA internal transcribed spacer demonstrated none between the species of the complex [43]. Isolates that showed phenotypic characteristics intermediate between *M. tuberculosis* and *M. bovis* have been described [5] and analysis of a large series of phenotypic characteristics showed 92% similarity between *M. tuberculosis*, *M. bovis*, *M. africanum* and *M. microti* [44]. Under the taxonomic rules *M. bovis* should be reduced to a biovar of *M. tuberculosis* rather than be classified as a discrete species [3].

Our results differ from those achieved by Zhang and colleagues using similar PFGE techniques [29] on a smaller collection of American isolates. Our success rate with *Dra* I PFGE was much lower than theirs and the greater diversity found by Zhang and colleagues with *Xba* I digestion- every unrelated strain had a unique pattern, was not found by us. Examination of their published results suggests that

the genetic diversity of their strains was limited. The slightly greater genetic diversity in American isolates probably reflects differences in the human population. The other two studies using PFGE in the *M. tuberculosis* complex were largely concerned with characterising *M. bovis* BCG [31, 32]. Varnerot and colleagues [31] were able to differentiate the virulent and avirulent strains of *M. tuberculosis* H37R and to distinguish between the Pasteur, Glaxo, Russian and Japanese BCG strains using *Dra* I digestion. Kristjansson and colleagues [32] were able to discriminate *M. bovis* from *M. bovis* BCG by *Asn* I digestion. We were unable to repeat the work of Varnerot and colleagues but it was possible to distinguish the Glaxo vaccine strain which is used in the UK from the others by its unique *Xba* I pattern. Two of three Scottish clinical isolates from vaccine ulcers shared this pattern. Whether the third isolate represents strain divergence within the patient or vaccination with an alternative strain is not discernible from the records.

Several hypotheses have been put forward by Frothingham and colleagues [43] for the lack of diversity found in the *M. tuberculosis* complex. First it is suggested that the complex may be of recent origin; second that the latent state of the disease may slow the rate of evolution; third the organisms are obligate parasites which may restrict population numbers; fourth their intracellular existence limits their exposure to other organisms and thus chances for recombination; and fifth that the constant host environment provides little selection pressure for divergence.

The poor discrimination found with other typing methods is most readily explained by the intrinsic lack of genetic diversity in genomic sequences of the *M. tuberculosis* complex. This was the case even when the sensitive technique of PFGE was used to characterize isolates from widely separated geographical regions. We have presented evidence that the genomic diversity that is observed with *Dra* I is a consequence of a *Dra* I restriction site in *IS6110*. Others have demonstrated that this element transposes in the genome [45] and therefore the techniques of *Dra* I PFGE fingerprinting and *IS6110* Southern hybridisation of genomic restriction fragments are both identifying the same genetic polymorphism-*IS6110* transposition. This transposition occurs in a genetically very stable genomic background.

#### ACKNOWLEDGEMENTS

We would like to thank Alan Rayner, Gillian Harris and the other technical staff at the Scottish Mycobacteria Reference Laboratory for their help with this project. Dr J. W. Dale, University of Surrey, for providing the BCG strains. Dr G. H. Mazurek, University of Texas Tyler, for his advice on the methodology and Dr J. D. A. van Embden for supplying a copy of his Southern blotting protocol.

This study was funded by the Scottish Hospital Endowments Research Trust.

#### REFERENCES

1. Pennington CI. Mortality, public health and medical improvement in Glasgow 1855–1911. PhD thesis. Stirling, Scotland: University of Stirling, 1977.
2. Watt B. Scottish Mycobacteria Reference Laboratory Report for 1992.
3. Lévy-Frébault VV, Portaels F. Proposed minimal standards for the genus *Mycobacterium*

- and for the description of new slowly growing *Mycobacterium* species. *Int J Syst Bacteriol* 1992; **42**: 315–23.
4. Yates MD, Collins CH, Grange JM. 'Classical' and 'Asian' variants of *Mycobacterium tuberculosis* isolated in Southeast England 1977–80. *Tubercle* 1982; **62**: 55–61.
  5. Collins CH, Yates MD, Grange JM. Subdivision of *Mycobacterium tuberculosis* into five variants for epidemiological purposes: methods and nomenclature. *J Hyg* 1982; **89**: 235–42.
  6. Barrow PA. Aspects of the epidemiology of bovine tuberculosis in badgers and cattle. II. The development and use of a typing system for *Mycobacterium bovis*. *J Hyg* 1981; **86**: 247–57.
  7. Barrow PA. Physiological characteristics of the *Mycobacterium tuberculosis*–*M. bovis* group of organisms with particular reference to heterogeneity within *M. bovis*. *J Gen Microbiol* 1986; **132**: 427–30.
  8. Roman MC, Sicilia MJL. Preliminary investigation of *Mycobacterium tuberculosis* biovars *J Clin Microbiol* 1984; **20**: 1015–6.
  9. Hoffner SE, Svenson SB, Norberg R, Dias F, Ghebremichael S, Källenius G. Biochemical heterogeneity of *Mycobacterium tuberculosis* complex isolates in Guinea-Bissau. *J Clin Microbiol* 1993; **31**: 2215–7.
  10. Grange JM, Aber VR, Allen BW, Mitchison DA, Goren MB. The correlation of bacteriophage types of *Mycobacterium tuberculosis* with guinea-pig virulence and in vitro indicators of virulence. *J Gen Microbiol* 1978; **108**: 1–7.
  11. Wietan G, Haverkamp J, Meuzelaar HLC, Engel HWB, Berwald LC. Pyrolysis mass spectrometry: A new method to differentiate between the mycobacteria of the 'Tuberculosis complex' and other mycobacteria. *J Gen Microbiol* 1981; **122**: 109–18.
  12. Floyd MH, Silcox VA, Jones WD Jr, Butler WR, Kilburn JO. Separation of *Mycobacterium bovis* BCG from *Mycobacterium tuberculosis* and *Mycobacterium bovis* by using high-performance lipid chromatography of mycolic acids. *J Clin Microbiol* 1992; **30**: 1327–30.
  13. Millership SE, Want SV. Whole-cell protein electrophoresis for typing *Mycobacterium tuberculosis*. *J Clin Microbiol* 1992; **30**: 2784–7.
  14. Cousins DV, Francis BR, Gow BL, et al. Tuberculosis in captive seals: Bacteriological studies on an isolate belonging to the *Mycobacterium tuberculosis* complex. *Res Vet Sci* 1990; **48**: 196–200.
  15. Fevre A, Fougerat J, Brunneau S, Guinet R. Characterisation of *Mycobacterium species* by sodium dodecyl sulfate-polyacrylamide gel electrophoresis. *Appl Theor Electrophor* 1991; **2**: 13–6.
  16. Thompson PJ, Cousins DV, Gow BL, Collins DM, Williamson BH, Dagnia HT. Seals, seal trainers and mycobacterial infection. *Am Rev Respir Dis* 1993; **147**: 164–7.
  17. Cousins DV, Williams SN, Reuter R, et al. Tuberculosis in wild seals and characterisation of the seal bacillus. *Aust Vet J* 1993; **70**: 92–7.
  18. Collins DM, De Lisle GW. DNA Restriction endonuclease analysis of *Mycobacterium tuberculosis* and *Mycobacterium bovis* BCG. *J Gen Microbiol* 1984; **130**: 1019–21.
  19. Collins DM, De Lisle GW. DNA restriction endonuclease analysis of *Mycobacterium bovis* and other members of the tuberculosis complex. *J Clin Microbiol* 1985; **21**: 562–4.
  20. Collins DM, De Lisle GW, Gabric DM. Geographic distribution of restriction types of *Mycobacterium bovis* isolates from brush-tailed possums (*Trichosurus vulpecula*) in New Zealand. *J Hyg* 1986; **96**: 431–8.
  21. Collins DM, De Lisle GW. BCG identification by DNA restriction fragment patterns. *J Gen Microbiol* 1987; **133**: 1431–4.
  22. Labidi A, Thoen CO. Genetic relatedness among *Mycobacterium tuberculosis* and *M. bovis*. *Acta Leprol* 1989; **7** (Suppl 1): 217–21.
  23. Van Soolingen D, De Haas PEW, Hermans PWM, Groenen PMA, Van Embden JDA. Comparison of various repetitive DNA elements as genetic markers for strain differentiation and epidemiology of *Mycobacterium tuberculosis*. *J Clin Microbiol* 1993; **31**: 1987–95.
  24. Van Embden JDA, Cave MD, Crawford JT, et al. Strain identification of *Mycobacterium tuberculosis* by DNA fingerprinting: recommendations for a standardised methodology. *J Clin Microbiol* 1993; **31**: 406–9.
  25. Cheverel-Dellagi D, Abderrahman A, Haltiti R, Koubaji H, Gicquel B, Dellagi K. Large-scale DNA fingerprinting of *Mycobacterium tuberculosis* strains as a tool for epidemiological studies of tuberculosis. *J Clin Microbiol* 1993; **31**: 2446–50.

26. Romling U, Grothues D, Heuer T, Tummeler B. Physical genome analysis of bacteria. *Electrophoresis*. 1992; **13**: 626–31.
27. Lévy-Frébault VV, Thorel M, Varnerot A, Gicquel B. DNA polymorphism in *Mycobacterium paratuberculosis*, 'Wood pigeon Mycobacteria' and related mycobacteria analysed by field inversion gel electrophoresis. *J Clin Microbiol* 1989; **27**: 2823–6.
28. Fomokung NG, Dale JW, Osborn TW, Grange JM. Use of genetic probes based on insertion sequence *IS986* to differentiate between BCG vaccine strains. *J Appl Bacteriol* 1992; **72**: 126–33.
29. Zhang Y, Mazurek GH, Cave MD, et al. DNA polymorphisms in strains of *Mycobacterium tuberculosis* analysed by pulsed-field gel electrophoresis a tool for epidemiology. *J Clin Microbiol* 1992; **30**: 1551–6.
30. Hector JSR, Pang Y, Mazurek GH, Zhang Y, Brown BA, Wallace RJ Jr. Large restriction fragment patterns of genomic *Mycobacterium fortuitum* DNA as strain-specific markers and their use in the epidemiologic investigation of four nosocomial outbreaks. *J Clin Microbiol* 1992; **30**: 1250–5.
31. Varnerot A, Clément F, Gheorghiu M, Lévy-Frébault VV. Pulsed field gel electrophoresis of representatives of *Mycobacterium tuberculosis* and *Mycobacterium bovis* BCG strains. *FEMS Microbiol Letts* 1992; **98**: 155–60.
32. Kristjansson M, Green P, Manning HL, et al. Molecular confirmation of *Bacillus Calmette-Guérin* as the cause of pulmonary infection following urinary tract installation. *Clin Infect Dis* 1993; **17**: 228–30.
33. Coffin JW, Condon C, Compston CA, Potter KN, Lamontagne, Shafiq J, Kunimoto DY. Use of restriction fragment polymorphisms resolved by pulsed-field gel electrophoresis for subspecies identification of mycobacteria in the *Mycobacterium avium* complex and for isolation of DNA probes. *J Clin Microbiol* 1992; **30**: 1829–36.
34. Mazurek GH, Hartman S, Zhang Y, et al. Large DNA restriction fragment polymorphism in the *Mycobacterium avium-M. intracellulare* complex: a potential epidemiologic tool. *J Clin Microbiol* 1993; **31**: 390–4.
35. Arbeit RD, Slutsky A, Barber TW, et al. Genetic diversity among strains of *Mycobacterium avium* causing monoclonal and polyclonal bacteremia in patients with AIDS. *J Infect Dis* 1993; **167**: 1384–90.
36. Wallace RJ Jr, Zhang Y, Brown BA, Fraser V, Mazurek GH, Maloney S. DNA large restriction fragments of sporadic and epidemic nosocomial strains of *Mycobacterium chelonae* and *Mycobacterium abscessus*. *J Clin Microbiol* 1993; **31**: 2697–701.
37. Dice LR. Measurement of the amount of ecologic association between species. *Ecology* 1945; **26**: 297–302.
38. Von Reyn CF, Maslow JN, Barber TW, Falkinham JO IIIrd, Arbeit RD. Persistent colonisation of potable water as a source of *Mycobacterium avium* infection in AIDS. *Lancet* 1994; **343**: 1137–41.
39. Thierry D, Cave MD, Eisenach KD, Crawford JT, Bates JH, Gicquel B, Guesdon JL. *IS6110* and IS-like element of *Mycobacterium tuberculosis* complex. *Nucleic Acids Res* 1990; **18**: 188.
40. Collins DM, Earsmun SK, Stephens DM, Yates GF, De Lisle GW. DNA fingerprinting of *Mycobacterium bovis* strains by restriction fragment analysis and hybridisation with insertion elements *IS1081* and *IS6110*. *J Clin Microbiol* 1993; **31**: 1143–7.
41. Baess I. Deoxyribonucleic acid relatedness among species of slowly-growing mycobacteria. *Acta Path Microbiol Scand Sect B* 1979; **87**: 221–6.
42. Imaeda T. Deoxyribonucleic acid relatedness among selected strains of *Mycobacterium tuberculosis*, *Mycobacterium bovis*, *Mycobacterium bovis* BCG, *Mycobacterium microti* and *Mycobacterium africanum*. *Int J Syst Bact* 1985; **35**: 147–50.
43. Frothingham R, Hills HG, Wilson KH. Extensive DNA sequence conservation throughout the *Mycobacterium tuberculosis* complex. *J Clin Microbiol* 1994; **32**: 1639–43.
44. Tsukamura M, Mizuno M, Toyama H. Taxonomic studies on the *Mycobacterium tuberculosis* series. *Microbiol Immunol* 1985; **29**: 285–99.
45. Fomokung NG, Dale JW. Transpositional activity of *IS986* in *Mycobacterium smegmatis*. *Gene* 1993; **130**: 99–105.