

# 3D SPH simulations of grain growth in protoplanetary disks

Guillaume Laibe<sup>1</sup>, Jean-François Gonzalez<sup>1</sup>, Laure Fouchet<sup>2</sup> and Sarah T. Maddison<sup>3</sup>

<sup>1</sup>Université de Lyon, Lyon, F-69003, France; Université Lyon 1, Villeurbanne, F-69622, France; CNRS, UMR 5574, Centre de Recherche Astrophysique de Lyon, École Normale Supérieure de Lyon, 46 allée d'Italie, F-69364 Lyon cedex 07, France  
email: Jean-Francois.Gonzalez@ens-lyon.fr, Guillaume.Laibe@ens-lyon.fr

<sup>2</sup>Department of Physics, ETH Zurich, CH-8093 Zurich, Switzerland  
email: fouchet@phys.ethz.ch

<sup>3</sup>Centre for Astrophysics and Supercomputing, Swinburne University of Technology, PO Box 218, Hawthorn, VIC 3122, Australia  
email: smaddison@swin.edu.au

**Abstract.** We present the first results of the treatment of grain growth in our 3D, two-fluid (gas+dust) SPH code describing protoplanetary disks. We implement a scheme able to reproduce the variation of grain sizes caused by a variety of physical processes and test it with the analytical expression of grain growth given by Stepinski & Valageas (1997) in simulations of a typical T Tauri disk around a one solar mass star. The results are in agreement with a turbulent growing process and validate the method. We are now able to simulate the grain growth process in a protoplanetary disk given by a more realistic physical description, currently under development. We discuss the implications of the combined effect of grain growth and dust vertical settling and radial migration on subsequent planetesimal formation.

**Keywords.** planetary systems: protoplanetary disks — hydrodynamics — methods: numerical

## 1. Introduction

Collisions and aggregation govern the first steps of planet formation from micron-sized particles to decimetric pre-planetesimals. Observations of protoplanetary disks support this mechanism by showing evidence of dust grain growth (e.g. Apai *et al.* 2004). We describe here the implementation of grain growth in our simulations of protoplanetary disks. Depending on their relative velocities and material properties (Dominik & Tielens 1997), collisions between solid particles can make them stick and grow, or conversely break them into smaller pieces.

## 2. Grain growth in protoplanetary disks

A first description of the grain growth process is given by Stepinski & Valageas (1997). They model a turbulent, vertically isothermal protoplanetary disk, in which gas and dust are represented by two separate phases interacting via aerodynamic drag in the Epstein regime. Their solid particles are supposed to stick perfectly during collisions, and can therefore only grow. The variation of their size  $s$  is given by the following analytical expression of the growth rate:

$$\frac{ds}{dt} = \sqrt{2^{3/2} \text{Ro} \alpha} \frac{\rho_s}{\rho_d} C_s \frac{\sqrt{\text{Sc} - 1}}{\text{Sc}}, \quad (2.1)$$

where  $Ro$  is the Rossby number for turbulent motions,  $\alpha$  the Shakura & Sunyaev (1973) viscosity parameter,  $\rho_s$  the density of matter concentrated into solid particles,  $\rho_d$  the intrinsic density of the grains,  $C_s$  the local gas sound speed, and  $Sc$  the Schmidt number of the flow which estimates the effect of gas turbulence on the grains.  $Sc$  is defined by

$$Sc = (1 + \Omega_k t_s) \sqrt{1 + \frac{\bar{v}^2}{V_t^2}}, \quad (2.2)$$

where  $\Omega_k$  is the local keplerian velocity,  $t_s$  the dust stopping time,  $\bar{v}$  the mean relative velocity between gas and dust, and  $V_t$  a turbulent velocity. The growth rate depends on  $s$  through the stopping time

$$t_s = \frac{\rho_d s}{\rho_g C_s}, \quad (2.3)$$

where  $\rho_g$  is the gas density.

The motion of a dust grain and the grain growth process, which both depend on the grain size  $s$ , are coupled phenomena. The understanding of the global evolution of dust in disks therefore requires a numerical treatment.

### 3. Grain growth with an SPH code

Our 3D, bi-fluid, Smooth Particle Hydrodynamics (SPH) code has been developed to model vertically isothermal, non self-gravitating protoplanetary disks. Gas and dust are treated as two separate phases and are coupled by aerodynamic drag. The code and its results on dust migration and settling are presented in Barrière-Fouchet *et al.* (2005). It has also been applied to grain stratification in GG Tau's circumbinary ring (Pinte *et al.* 2007) and to gaps opened by planets in the dust phase of protoplanetary disks (Maddison *et al.* 2007; Fouchet *et al.* 2007; see also talk by Gonzalez, this volume).

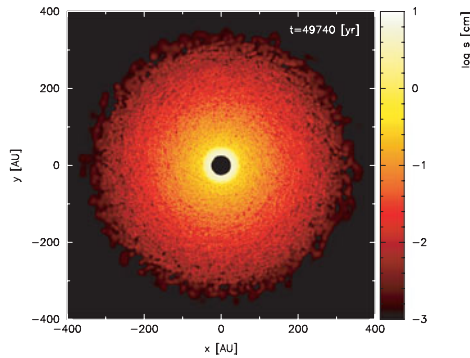
The assumptions we have made are very similar to those of Stepinski & Valageas (1997) mentioned in Sect. 2, their prescription for grain growth is therefore easy to implement in our code. We allow the grain size  $s$  assigned to each SPH particle, assuming it to represent the typical size of dust grains at its position, to vary with time following Eq. (2.1). We take the initial grain size distribution to be uniform.

### 4. Results

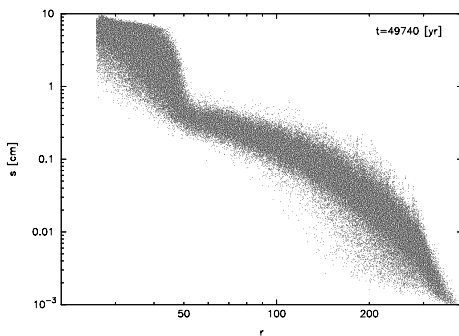
We model grain growth in a typical T Tauri disk of mass  $M_{\text{disk}} = 0.01 M_{\odot}$ , with a total dust mass  $M_{\text{dust}} = 0.01 M_{\text{disk}}$ , around a central star of mass  $M_{\star} = 1 M_{\odot}$ . We ran simulations with 200,000 SPH particles, evolved over 50,000 years, for a series of initial dust grain sizes ranging from  $s_0 = 1 \mu\text{m}$  to 1 mm. Fig. 1 and Fig. 3 show the resulting grain sizes in face-on and edge-on views of the disk, for  $s_0 = 1 \mu\text{m}$ .

We find that grain growth occurs very quickly, especially in the inner disk where the density is the highest, as one would expect from Eq. (2.1). In this region, the dust grains reach centimetric size (see Fig. 2) in only a few timesteps. In the outer parts of the disk, where the density is far lower, the grains grow much more slowly and their size stays below the millimeter.

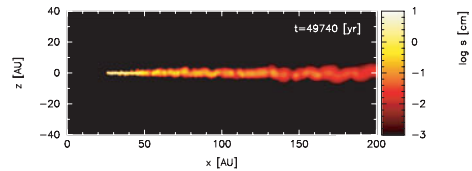
An inwards migrating grain coming into a denser region grows almost instantaneously to a size characteristic of the grains at its new position, which in turn evolves slowly over time. Hence, the global shape of the plot shown in Fig. 2 stays the same as time goes on, but the size distribution slowly progresses to larger sizes. The initial size  $s_0$  has



**Figure 1.** Grain size distribution in an equatorial plane cut of the disk.



**Figure 2.** Grain size distribution as a function of radial distance to the star.



**Figure 3.** Grain size distribution in a meridional plane cut of the disk. Figures are made with SPLASH (Price 2007).

very little influence on the final size distribution, and in particular on the maximum size reached.

Our results are consistent with those obtained by Dullemond & Dominik (2005). With a model solving the coagulation equation in presence of turbulence, they found a very fast grain growth in T Tauri protoplanetary disks, depleting very small sizes and producing centimetric grains.

## 5. Conclusion

We have implemented in our 3D SPH code a mechanism able to treat grain growth and validated it through the use of the simple model of Stepinski & Valageas (1997).

In accordance with physical intuition, dust grains grow much more quickly in the denser, central regions of the disk, where centimetric sized are reached. The growth time is smaller than the migration time and a quasi-stationary distribution of grain size appears in the disk. The small grains are depleted too rapidly to be consistent with observations of protoplanetary disks, showing the need to take into account other processes such as microscopic interactions between the grains, kinetic energy dissipation, porosity, and re-fragmentation. This will be addressed in future work.

**References**

- Apai, D., Pascucci, I., Sterzik, M. F., *et al.* 2004, *A&A*, 426, L53
- Barrière-Fouchet, L., Gonzalez, J.-F., Murray, J. R., Humble, R. J., & Maddison, S. T. 2005, *A&A*, 443, 185
- Dominik, C., Tielens, A. G. G. M. 1997, *ApJ*, 480, 647
- Dullemond, C. P. & Dominik, C. 2005, *A&A*, 434, 971
- Fouchet, L., Maddison, S. T., Gonzalez, J.-F., & Murray, J. R. 2007, *A&A*, in press (arXiv:0708.4110)
- Maddison, S. T., Fouchet, L., & Gonzalez, J.-F. 2007, *Ap&SS*, 474, 1037
- Pinte, C., Fouchet, L., Ménard, F., Gonzalez, J.-F., & Duchêne, G. 2007, *A&A*, 469, 963
- Price, D. 2007, *PASA*, accepted (arXiv:0709.0832)
- Shakura, N. I. & Sunyaev, R. A. 1973, *A&A*, 24, 337
- Stepinski, T. F. & Valageas, P. 1997, *A&A*, 319, 1007