

THE  
GEOLOGICAL MAGAZINE.

NEW SERIES.

DECADE IV. VOL. III.

JANUARY — DECEMBER, 1896.

THE  
GEOLOGICAL MAGAZINE:

OR,

*Monthly Journal of Geology:*

WITH WHICH IS INCORPORATED

“THE GEOLOGIST.”

NOS. CCCLXXIX TO CCC.XC.

EDITED BY

HENRY WOODWARD, LL.D., F.R.S., F.G.S., F.Z.S., F.R.M.S.,

OF THE BRITISH MUSEUM OF NATURAL HISTORY;

PRESIDENT OF THE PALÆONTOGRAPHICAL SOCIETY,

AND VICE-PRESIDENT OF THE MALACOLOGICAL SOCIETY;

MEMBER OF THE LYCEUM OF NATURAL HISTORY, NEW YORK; AND OF THE AMERICAN PHILOSOPHICAL SOCIETY, PHILADELPHIA; HONORARY MEMBER OF THE YORKSHIRE PHILOSOPHICAL SOCIETY; OF THE GEOLOGISTS' ASSOCIATION, LONDON; OF THE INSTITUTION OF MINING AND METALLURGY, LONDON; OF THE GEOLOGICAL SOCIETIES OF EDINBURGH, GLASGOW, HALIFAX, LIVERPOOL, AND SOUTH AFRICA; CORRESPONDING MEMBER OF THE GEOLOGICAL SOCIETY OF BELGIUM; OF THE IMPERIAL SOCIETY OF NATURAL HISTORY OF MOSCOW; OF THE NATURAL HISTORY SOCIETY OF MONTREAL; AND OF THE MALACOLOGICAL SOCIETY OF BELGIUM.

ASSISTED BY

ROBERT ETHERIDGE, F.R.S. L. & E., F.G.S., F.C.S., &c.

WILFRID H. HUDLESTON, M.A., F.R.S., V.P.G.S., F.L.S., F.C.S.

GEORGE J. HINDE, PH.D., F.R.S., F.G.S., &c.

AND

HORACE BOLINGBROKE WOODWARD, F.R.S., F.G.S., &c.

NEW SERIES. DECADE IV. VOL. III.

JANUARY—DECEMBER, 1896.

LONDON:

MESSRS. DULAU & CO., 37, SOHO SQUARE.

F. SAVY, 77, BOULEVART ST.-GERMAIN, PARIS.

1896.

HERTFORD :  
PRINTED BY STEPHEN AUSTIN AND SONS.

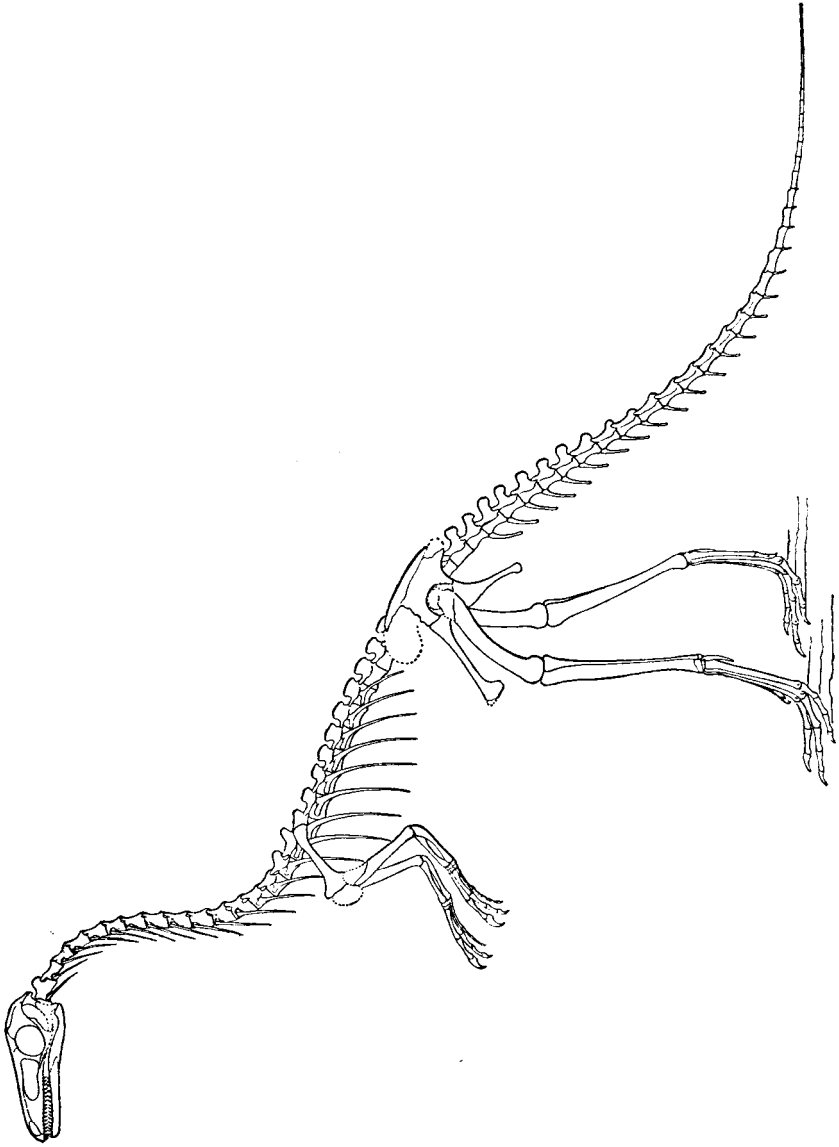
## LIST OF PLATES.

PLATE	FACING PAGE
I. Restoration of <i>Compsognathus longipes</i> , Wagner . . . . .	1
II.     ,,     ,, <i>Scelidosaurus Harrisonii</i> , Owen . . . . .	5
III.    ,,    ,, <i>Hypsilophodon Foxii</i> , Huxley . . . . .	6
IV.     ,,     ,, <i>Iguanodon Bernissartensis</i> , Boulenger . . . . .	7
V. "Neptunic Dike" of Oligocene Sandstone cutting Neocomian Clays	49
VI. The Merjelen Lake and the Aletsch Glacier . . . . .	97
VII. Scene of the Ice-Avalanche, Altels Glacier . . . . .	103
VIII. Charles Wachsmuth . . . . .	189
IX. <i>Triarthrus Beckii</i> , Green (Beecher) . . . . .	193
X. Skeleton of <i>Aptornis defossor</i> (Owen) . . . . .	241
XI. Two types of African Lake-Shores . . . . .	324
XII. Skeleton of <i>Diaphorapteryx Hawkinsi</i> , Forbes . . . . .	337
XIII. Some Original Members of the Palæontographical Society . . . . .	385
XIV. <i>Cocconeuthis hastiformis</i> , Rüppell, sp. . . . .	439
XV. Slies of Nummulitic Limestone (Eocene) . . . . .	487
XVI. Upper Chalk Belemnites . . . . .	529

## LIST OF ILLUSTRATIONS IN THE TEXT.

	PAGE
Sketch of <i>Compsognathus longipes</i> , Wagner . . . . .	4
Restoration of <i>Hypsilophodon Foxii</i> , Huxley. (After Hulke.) . . . . .	6
Table of British Strata, with North American Equivalents . . . . .	9
<i>Etblattina Deanensis</i> , sp. nov. . . . .	12
Section of Perlitic Rock from Jalisco, in Mexico . . . . .	18
<i>Iocrinus</i> and <i>Meroocrinus</i> . . . . .	73
<i>Meroocrinus Salopia</i> , sp. nov. . . . .	74
Diagram-map of the Comrie Earthquake . . . . .	77
Diagram of Seismic Focus . . . . .	78
Diagram of the Merjelen Lake . . . . .	97
Diagram of old overflow level of the Merjelen Lake . . . . .	99
Diagram of Ice-Avalanche on the Gemmi Pass . . . . .	103
Cross-section of the Valley below the summit of Altels . . . . .	104
Section from Ben Muich Dhui to Strathmore . . . . .	110
Section from Lesmahagow to Caithness . . . . .	111
Pelvis of <i>Cryptoclidus Oxoniensis</i> (Phillips) . . . . .	146
Plan of the Baden District . . . . .	149
Longitudinal Section of the Baden District . . . . .	150
Transverse     "     "     "     " . . . . .	150
Mineral Springs of Baden, Switzerland . . . . .	151
Diagram showing Relationship of Subgenera of <i>Cheirurus</i> . . . . .	166
General Range of Subgenera of <i>Cheirurus</i> in Europe . . . . .	167
Pleistocene Beds of Malta . . . . .	203
Section across Ben Lawers to Crieff . . . . .	211
Section across Craig Na Challeich to Loch Earn . . . . .	213
Section across the Pass of Leny . . . . .	215
Two Sections through Eocene Beds at Bincombe . . . . .	246
Section across Northern Somali-land . . . . .	292
<i>Archæodidema Thompsoni</i> , gen. et sp. nov. . . . .	318

	PAGE
Section along the base of the North Cliff, Southwold . . . . .	355
<i>Anchisaurus colurus</i> , Marsh . . . . .	391
<i>Compsognathus longipes</i> , Wagner . . . . .	392
<i>Ceratosaurus nasicornis</i> , Marsh . . . . .	392
<i>Brontosaurus excelsus</i> , Marsh . . . . .	394
<i>Stegosaurus unguulatus</i> , Marsh . . . . .	395
<i>Scelidosaurus Harrisoni</i> , Owen . . . . .	396
<i>Triceratops prorsus</i> , Marsh . . . . .	396
<i>Camptosaurus dispar</i> , Marsh . . . . .	397
<i>Laosaurus consors</i> , Marsh . . . . .	398
<i>Hypsilophodon Foxii</i> , Huxley . . . . .	398
<i>Iguanodon Bernissartensis</i> , Boulenger . . . . .	399
<i>Claosaurus annectens</i> , Marsh . . . . .	399
<i>Subclymenia evoluta</i> , Phillips, sp. . . . .	417
<i>Listracanthus spinatus</i> , sp. n. . . . .	425
Profile of anterior part of Skull of <i>Nesopithecus Roberti</i> , gen. et sp. nov. . . . .	433
Palatal view of same Skull of <i>Nesopithecus Roberti</i> . . . . .	434
Left Mandibular Ramus of <i>Nesopithecus Roberti</i> . . . . .	435
Lenticle of Quartzite at Llansadwrn . . . . .	552
Map of the Exmoor Earthquake, January 23, 1894 . . . . .	555



Restoration of *Compsognathus longipes*, Wagner. One-fourth natural size. Jurassic, Bavaria.