

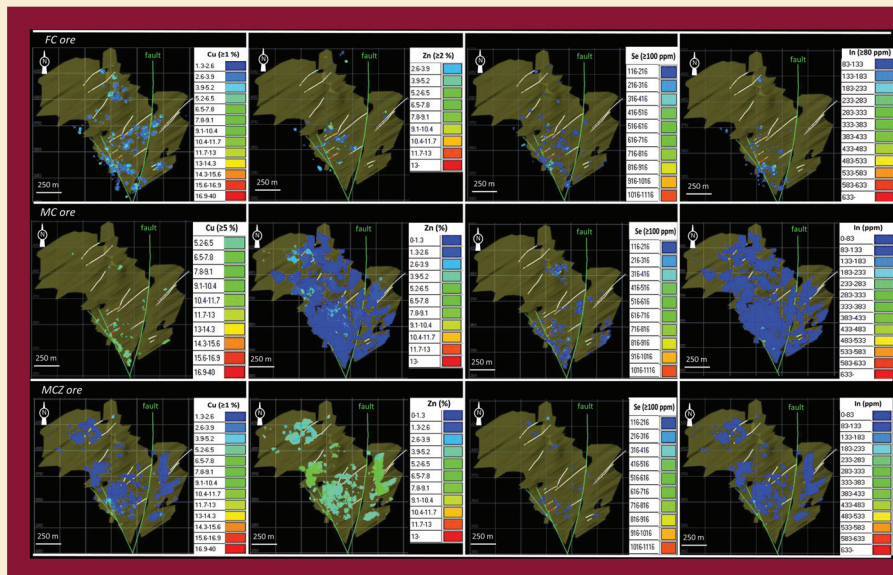
Critical-metal mineralogy and ore genesis:
Contributions from the European Mineralogical
Conference held in Rimini, September 2016

MAY 2018

MINERALOGICAL

JOURNAL OF MINERAL SCIENCES

MAGAZINE



MINERALOGICAL MAGAZINE

ISSN 0026-461X

Principal Editors

R. H. MITCHELL, *Department of Geology, Lakehead University, Thunder Bay, Ontario P7B 5E1, Canada*

P. A. WILLIAMS, *University of Western Sydney, Locked Bag 1797, Penrith, NSW 2751, Australia*

S. J. MILLS, *Museum Victoria, Melbourne, Australia*

(Manuscripts should be submitted on-line at <http://www.editorialmanager.com/minmag/>)

Associate Editors

M. ARIMA, *Yokohama National University, Japan*

D. ATENCIO, *University of Sao Paulo, Brazil*

F. BOSI, *University of Rome, Italy*

S. BROOM-FENDLEY, *Camborne School of Mines, UK*

L. CAMPBELL, *University of Manchester, UK*

A. CHAKRABARTY, *Indian Institute of Science Education and Research Tirupati, India*

A. G. CHRISTY, *Australian National University, Canberra, Australia*

C. L. CORKHILL, *University of Sheffield, UK*

I. COULSON, *University of Regina, Canada*

G. DELLA VENTURA, *Università Roma Tre, Roma, Italy*

I. GALUSKINA, *University of Silesia, Poland*

G. D. GATTA, *Università degli Studi di Milano, Italy*

C. A. GEIGER, *University of Salzburg, Austria*

I. GRAHAM, *University of New South Wales, Australia*

E. S. GREW, *University of Maine, USA*

J. HARVEY, *University of Leeds, UK*

D. HIBBS, *University of Sydney, Australia*

A. R. KAMPE, *Natural History Museum of Los Angeles County, USA*

S. KRIVOVICHEV, *St Petersburg State University, Russia*

F. LAUFEK, *Czech Geological Survey, Czech Republic*

M. LEE, *Glasgow University, UK*

J. MAJZLAN, *University of Jena, Germany*

L. MELLUSO, *Università di Napoli Federico II, Italy*

K. MOMMA, *National Museum of Nature and Science, Tokyo, Japan*

T. MUELLER, *University of Leeds, UK*

B. O'DRISCOLL, *University of Manchester, UK*

K. PFAFF, *Colorado School of Mines, Golden, USA*

M. J. RUMSEY, *Natural History Museum, London, UK*

O. SHIDRA, *St Petersburg State University, Russia*

C. D. STOREY, *University of Portsmouth, UK*

Reviews Editor: S. J. MILLS

Structures Editor: P. LEVERETT

Production Editor: H. C. KERBEY

MINERALOGICAL SOCIETY

[Registered Charity No. 233706]

Officers and Council for 2018

President: H. Downes

Treasurer: J. M. Adams *P.R.O.:* Philip Pogge von Strandmann *General Secretary:* J. M. Horák

Principal Editors of the Magazine: S. J. Mills, R. H. Mitchell, P. A. Williams

Principal Editor of 'Clay Minerals': G. E. Christidis

Ordinary Members of Council: M. Anand, A. Bird, J.W. Bowles, A. Bray, S. Broom-Fendley, C. Corkhill, S. Gibson, J. Harvey, H. Hughes, S.J. Kemp, C. Petrone, V. Phoenix, E. Tomlinson, A. Walker, C. Warren, M. Widdowson, D. Wray

Office address: 12 Baylis Mews, Amyand Park Road, Twickenham TW1 3HQ, UK

Website: www.minersoc.org

Tel.: +44 (0)20 8891 6600; *Fax:* +44 (0)20 8891 6599; *e-mail:* info@minersoc.org

Mineralogical Magazine is published six times per year in February, April, June, August, October and December. The Journal is now primarily an online one.

The subscription price (excluding VAT) to *Mineralogical Magazine* for volume 82 (2018), which includes print and electronic access, is £718 (USA, Canada and Mexico US\$930) and includes delivery by air; single parts are available at £138 (USA, Canada and Mexico US\$178) plus postage. The electronic-only price available to institutional subscribers is £556 (USA, Canada and Mexico US\$720). EU subscribers (outside the UK) who are not registered for VAT should add VAT at their country's rate. VAT registered subscribers should provide their VAT registration number. Orders, which must be accompanied by payment, may be sent to any bookseller or subscription agent or direct to the publishers: Cambridge University Press, UPH, Shaftesbury Road, Cambridge CB2 8BS, or in the USA, Canada, and Mexico to Cambridge University Press, Journals Fulfillment Department, 1 Liberty Plaza, Floor 20, New York, NY 10006, USA. Japanese Prices for institutions are available from Kinokuniya Company Ltd, P.O. Box 55, Chitose, Tokyo, Japan.

All subscription enquiries should be sent to: journals@cambridge.org

Front cover picture: Copper, Zn, Se and In distribution in four of the more represented ore types at the Lombador orebody in the Neves-Corvo deposit, Iberian Pyrite Belt, Portugal. *Top:* stockwork copper ore (FC); *middle:* massive copper ore (MC); *bottom:* massive copper-zinc ore (MGZ). Data from the Semipres-Lundin mining, 2013, database. See Carvalho *et al.*, this issue.

CONTENTS OF No. 538, May 2018

	<i>Page</i>
JOHN F. W. BOWLES, NIGEL J. COOK, KRISTER SUNDBLAD, ERIK JONSSON, EIMEAR DEADY and HANNAH S. R. HUGHES: Critical-metal mineralogy and ore genesis: contributions from the European Mineralogical Conference held in Rimini, September 2016	S1
J. R. S. CARVALHO, J. M. R. S. RELVAS, A. M. M. PINTO, M. FRENZEL, J. KRAUSE, J. GUTZMER, N. PACHECO, R. FONSECA, S. SANTOS, P. CAETANO, T. REIS and M. GONÇALVES: Indium and selenium distribution in the Neves-Corvo deposit, Iberian Pyrite Belt, Portugal	S5
C. BROMAN, K. SUNDBLAD, M. VALKAMA and A. VILLAR: Deposition conditions for the indium-bearing polymetallic quartz veins at Sarvixviken, south-eastern Finland	S43
M. C. GALLARD-ESQUIVEL, A. CEPEDAL, M. FUERTES-FUENTE and A. MARTIN-IZARD: Enrichment in critical metals (In-Ge) and Te-Se in epithermal deposits of the 'La Carolina' district, San Luis, Argentina	S61
N. MONDILLO, R. HERRINGTON, A. J. BOYCE, C. WILKINSON, L. SANTORO and M. RUMSEY: Critical elements in non-sulfide Zn deposits: a reanalysis of the Kabwe Zn-Pb ores (central Zambia)	S89
C. MARIEN, A. H. DIJKSTRA and C. WILKINS: The hydrothermal alteration of carbonatite in the Fen Complex, Norway: mineralogy, geochemistry, and implications for rare-earth element resource formation	S115
RADEK ŠKODA, JAKUB PLÁŠIL, RENATA ČOPIJKOVÁ, MILAN NOVÁK, ERIK JONSSON, MICHAELA VAŠINOVÁ GALIOVÁ and DAN HOLTSTAM: Gadolinite-(Nd), a new member of the gadolinite supergroup from Fe-REE deposits of Bastnäs-type, Sweden	S133
ZSUZSA MOLNÁR, GABRIELLA B. KISS, ISTVÁN DUNKL, GYÖRGY CZUPPON, FEDERICA ZACCARINI and ISTVÁN DÓDONY: Geochemical characteristics of Triassic and Cretaceous phosphorite horizons from the Transdanubian Mountain Range (western Hungary): genetic implications	S147
ALKIS KONTONIKAS-CHAROS, CRISTIANA L. CIOBANU, NIGEL J. COOK, KATHY EHRIG, RONIZA ISMAIL, SASHA KRNETA and ANIMESH BASAK: Feldspar mineralogy and rare earth element (re)mobilization in iron-oxide copper gold systems from South Australia: a nanoscale study	S173
P. ALFONSO, S. A. HAMID, M. GARCIA-VALLES, T. LLORENS, F. J. LÓPEZ MORO, O. TOMASA, D. CALVO, E. GUASCH, H. ANTICOLI, J. OLIVA, D. PARCERISA and F. GARCÍA POLONIO: Textural and mineral-chemistry constraints on columbite-group minerals in the Penouta deposit: evidence from magmatic and fluid-related processes	S199
JOHN F. W. BOWLES, SAIOA SUÁREZ, HAZEL M. PRICHARD and PETER C. FISHER: The mineralogy, geochemistry and genesis of the alluvial platinum-group minerals of the Freetown Layered Complex, Sierra Leone	S223
O. V. KARIMOVA, A. A. ZOLOTAREV, T. L. EVSTIGNEEVA and B. S. JOHANSON: Mertieite-II, Pd ₈ Sb _{2.5} As _{0.5} , crystal-structure refinement and formula revision	S247
I. BOBOS, F. NORONHA and A. MATEUS: Fe-, Fe,Mn- and Fe,Mg-chlorite: a genetic linkage to W, (Cu,Mo) mineralization in the magmatic-hydrothermal system at Borralha, northern Portugal	S259
OLGA Y. PLOTINSKAYA, VERA D. ABRAMOVA, ELENA O. GROZNOVA, SVETLANA G. TESSALINA, REIMAR SELTMANN and JOHN SPRATT: Trace-element geochemistry of molybdenite from porphyry Cu deposits of the Birgilda-Tomino ore cluster (South Urals, Russia)	S281
C. CRUZ, F. NORONHA, P. SANTOS, J. K. MORTENSEN and A. LIMA: Supergene gold enrichment in the Castromil-Serra da Quinta gold deposit, NW Portugal	S307