

Exploring Li distribution in Li-ion batteries with FIB-SEM and TOF-SIMS

Dean J. Miller¹, Dave Zapotok¹, Paul Anzalone¹, Tomáš Šamořil², Lukáš Hladík², Hana Tesařová², Koffi Pierre Claver Yao³, Victor A. Maroni³, Daniel P. Abraham³

¹ TESCAN USA, Warrendale, PA 15086

² TESCAN ORSAY HOLDING, a.s., Brno, Czech Republic

³ Chemical Sciences & Engineering Division, Argonne National Laboratory, Argonne, Illinois 60439

Differences in reaction rates across an electrode in lithium (Li) ion batteries can lead to inhomogeneous degradation of electrochemically active particles, especially at high cycling rates. A number of studies have explored such inhomogeneous degradation [1-3]. Other studies have focused on Li distribution [4,5], including the use of FIB-SEM with EDX and TOF-SIMS to identify Li-ion “trapping” sites at grain boundaries and particle-matrix interfaces in cathode particles in discharged samples [6]. However, the measurement of Li distribution across an entire electrode has proved elusive.

In this work, the global and local distribution of Li in an aged cathode from a discharged cell was measured using a TESCAN FERA Xe plasma FIB-SEM configured with TOFWERK Time-of-flight secondary ion mass spectrometer (TOF-SIMS). TOF-SIMS is among the few approaches that can provide information regarding the spatial distribution of Li. Measurements focused on the cathode of an NCM523/graphite full cell that underwent 400, 3.0-4.4 V cycles at 30°C. After cycling, this cell exhibited a 40% loss of capacity as well as a significant rise in impedance entirely attributable to the positive electrode. The high current Xe plasma FIB facilitated preparation of large area cross-sections that allowed both global and local measurement of Li in the positive electrode using TOF-SIMS.

Figure 1 shows the top projection SIMS image corresponding to ⁷Li together with the secondary ion image of the electrode cross-section. Variations in intensity from particle to particle as well as within individual cathode particles indicate variations in Li content. The regions closest to the separation membrane appear to have a higher overall Li content than regions closer to the current collector. Mass spectra, shown in Figure 2, confirm this observation. The summed spectrum for 4 particles nearest the separation membrane shows a significantly higher level of Li compared to the particles closest to the current collector while Mn content is the same. Fig. 3a shows the distribution of ⁷Li in a single cathode particle. This image reveals a significant enhancement of Li at the periphery of the particle and at grain boundaries within the particle. Fig. 3b shows the distribution of ¹⁹F in a different nearby particle. Similar to Li, there is a significant level of F present at the periphery of the particle and, importantly, along grain boundaries within the particle. Since the LiPF₆-based electrolyte is the source for F, this observation supports a mechanism in which particle grain boundaries “crack” during cycling, allowing electrolyte to penetrate the boundaries [7]. However, the enhanced levels of Li in these regions together with signatures in the TOF-SIMS spectra for Li-F phases (not shown) further suggests that reaction phases form at these interfaces

These results suggest heterogeneous Li distribution and reaction phases play a role in limiting Li mobility and lead to reduced performance and life of lithium-ion cells.

References

- [1] H. Liu, *et al.*, *Nano Lett.* **17** (2017) p. 3452.
- [2] S. J. Harris, P. Lu, *J. Phys. Chem. C* **117** (2013) p. 6481.
- [3] J.A. Gilbert, *et al.*, *Adv. Mater. Interfaces* DOI: 10.1002/admi.201701447 (2018).
- [4] J. Wang, *et al.*, *Angew. Chem.* **53** (2014) p. 4460.
- [5] W. Zhang, *et al.*, *Sci. Adv.* **4** (2018) p. 2608.
- [6] T. Sui, *et al.*, *Nano Energy* **17** (2015) p. 1016.
- [7] D.J. Miller, *et al.*, *Adv. Energy Mater.* **3** (2013) p. 1098.

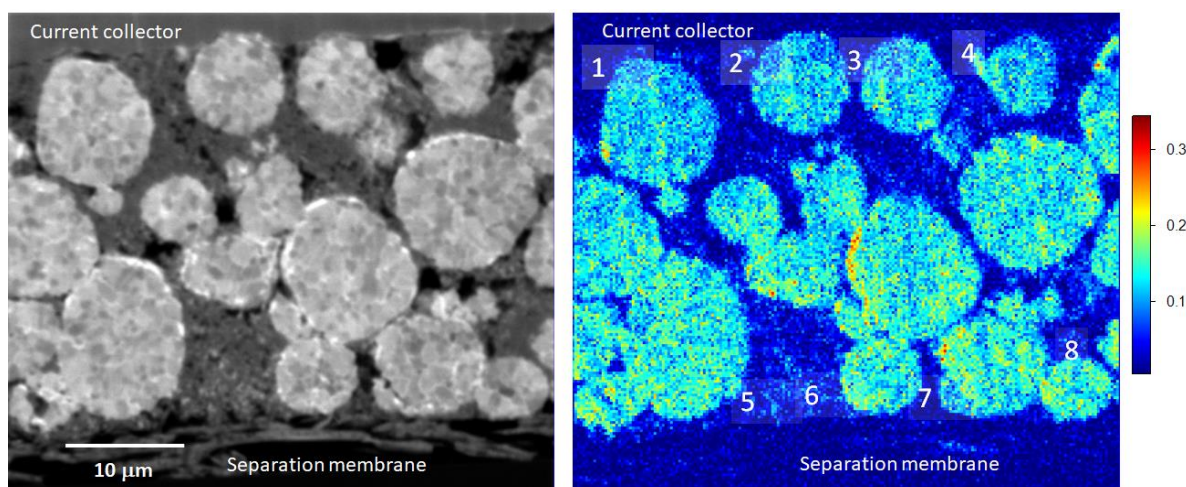


Figure 1. (a) Ion image and (b) top projection SIMS image for mass 7 [Li] of the entire electrode cross-section.

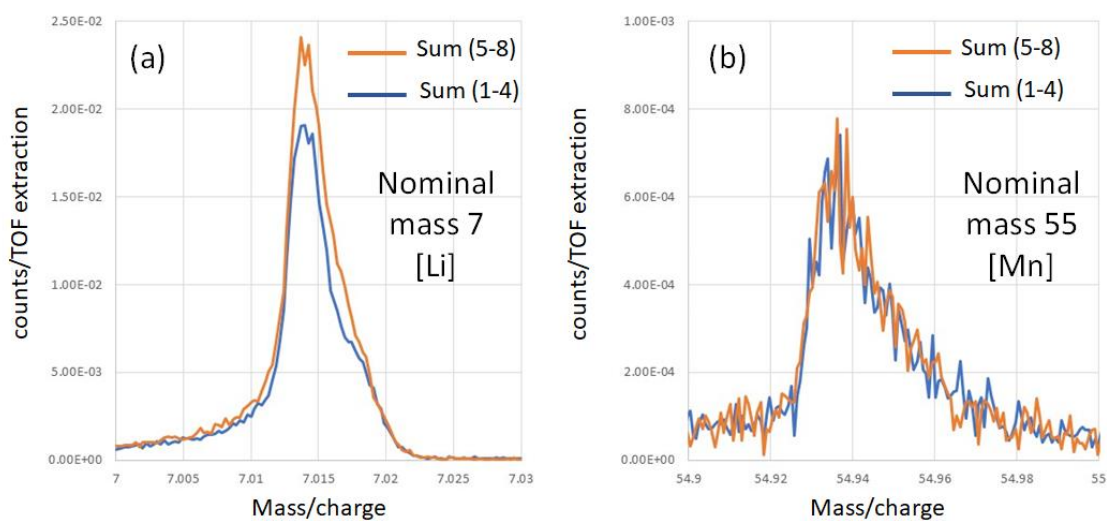


Figure 2. Mass spectra, summed as marked in Fig 1 for representative particles nearest the current collector (particles 1-4, blue) and separator (particles 5-8, orange), (a) for mass 7 [Li] and (b) for mass 55 [Mn].

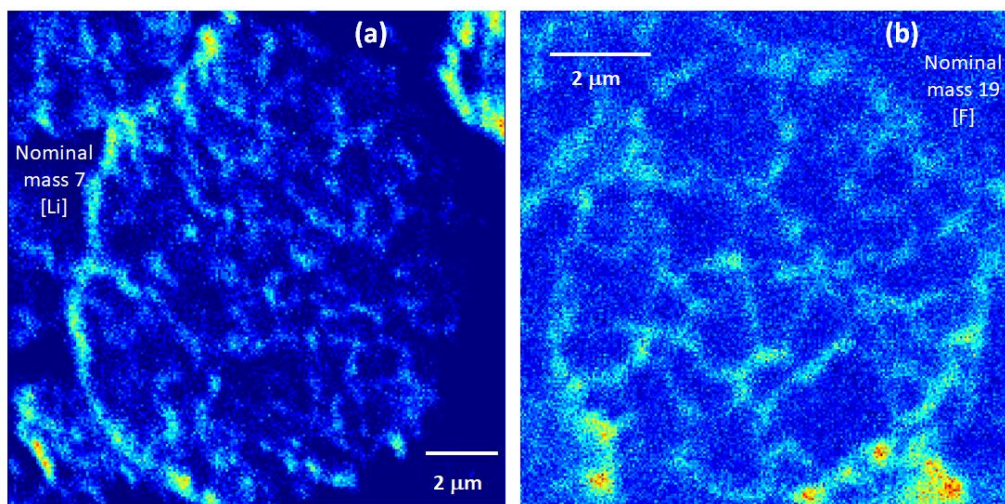


Figure 3. Top projection SIMS images from single cathode particles (a) for nominal mass 7 corresponding to Li and (b) for nominal mass 19 corresponding to F.