

# *Ichthyobodo salmonis* sp. n. (Ichthyobodonidae, Kinetoplastida), an euryhaline ectoparasite infecting Atlantic salmon (*Salmo salar* L.)

TROND E. ISAKSEN<sup>1\*</sup>, EGIL KARLSBAKK<sup>2</sup>, KUNINORI WATANABE<sup>3</sup>  
and ARE NYLUND<sup>1,3</sup>

<sup>1</sup> Uni Research, Uni Environment, P.O. Box 7810, 5020 Bergen, Norway

<sup>2</sup> Institute of Marine Research, P.O. Box 1870 Nordnes, 5817 Bergen, Norway

<sup>3</sup> Department of Biology, University of Bergen, P.O. Box 7803, 5020 Bergen, Norway

(Received 24 February 2011; revised 2 May 2011; accepted 9 May 2011; first published online 15 July 2011)

## SUMMARY

Phylogenetic analyses of SSU rDNA sequences have previously revealed the existence of 2 *Ichthyobodo* species able to infect Atlantic salmon (*Salmo salar* L.). *Ichthyobodo necator sensu stricto* (s.s.) is assumed to be a freshwater parasite, while a genetically distinct but undescribed species, *Ichthyobodo* sp. II *sensu* Todal *et al.* (2004) have been detected on Atlantic salmon in both fresh- and seawater. In the present study a morphological description of *Ichthyobodo* sp. II from the gills of salmon reared in fresh-, brackish- and seawater is presented, using both light- and electron microscopy. Comparative morphometry show that *Ichthyobodo* sp. II from both freshwater and seawater displays a different cell shape, and is significantly smaller than *I. necator* s.s. Also, ultrastructural characteristics distinguish these two species, notably differences in the attachment region and the presence of spine-like surface projections in *Ichthyobodo* sp. II. Based on both unique SSU rDNA sequences and morphological characteristics, we conclude that *Ichthyobodo* sp. II. represents a novel species for which we propose the name *Ichthyobodo salmonis* sp. n.

Key words: *Ichthyobodo salmonis*, *Ichthyobodo necator*, *Salmo salar*, seawater, freshwater, Euglenozoa, fish parasite, ultrastructure, SSU rDNA, gill disease.

## INTRODUCTION

Genus *Ichthyobodo* comprise ectoparasitic flagellates that infect a wide range of fish species worldwide (Robertson, 1985; Urawa *et al.* 1998). Heavy *Ichthyobodo* spp. infections on skin or gills cause disease (ichthyobodosis) and mortalities and have represented a common problem in fish farms (Franke, 1910; Schäperclaus, 1929; Fish, 1940; Bauer, 1959; Ellis and Wootten, 1978; Urawa, 1996).

*Ichthyobodo* infections in salmonids in both fresh- and seawater have in the past been identified as *Ichthyobodo necator*, thereby implying that this species is euryhaline (Ellis and Wootten, 1978; Wood, 1979; Poppe and Håstein, 1982; Urawa and Kusakari, 1990). Therefore, infections in seawater were assumed to be contracted in freshwater. *Ichthyobodo* spp. are attached to the host cell by an attachment disc through which a cytostome canal supported with microtubules penetrate to the host cell cytoplasm. Through this canal, cell contents are moved into the feeding parasite (see Robertson, 1985; Lom and Dykova, 1992). Ultrastructural studies by Roubal and Bullock (1987) revealed that the attachments region differed between flagellates identified as

*I. necator* infecting salmonids in fresh- and seawater, but suggested that the different environments influenced this structure. However, Bruno (1992) found significant differences in the size of *Ichthyobodo* trophozoites from the gills of salmonids reared in freshwater and seawater, the latter being significantly smaller. He suggested that a marine *Ichthyobodo* species exists that is able to infect Atlantic salmon. Lamas and Bruno (1992) studied the ultrastructure of the attachment region of the smaller species infecting seawater reared salmon. They verified the findings of Roubal and Bullock (1987) but considered it a character distinguishing a separate species, *Ichthyobodo* sp. More recent molecular studies of the small subunit ribosomal RNA gene (SSU rDNA) have confirmed the existence of 2 distinct *Ichthyobodo* species infecting farmed Atlantic salmon (*Salmo salar*) in Norway; *Ichthyobodo necator sensu stricto* (s.s.) and *Ichthyobodo* sp. II (Todal *et al.* 2004). *I. necator* s.s., re-described by Isaksen *et al.* (2007), appears to be restricted to freshwater fishes, while the undescribed *Ichthyobodo* sp. II infects salmon in both fresh- and seawater.

In the present study we used molecular methods to identify *Ichthyobodo* sp. II from salmon reared in fresh-, brackish- and seawater in Norway. Morphometric, scanning electron microscopy (SEM) and transmission electron microscopy (TEM) studies

\* Corresponding author: Uni Environment, P. box 7810, 5020 Bergen, Norway. Tel: +47 55 58 45 35. E-mail: trond.isaksen@uni.no

Table 1. Samples from farmed Atlantic salmon (*Salmo salar*), representing 3 different fish farms in Norway (1–3 (1 and 2: tank-reared fish, hatchery; 3: pen-reared fish). Environment refers to macrohabitat of the fish when *Ichthyobodo* samples were obtained. Fish size given as weight in grammes (g.)

| Farms | Date       | Host  | Size (g)  | Environment     | County    | Location         |
|-------|------------|-------|-----------|-----------------|-----------|------------------|
| 1     | 03.10.2007 | Parr  | 20–50     | Freshwater      | Hordaland | 60°30'N, 07°09'E |
| 2     | 21.08.2008 | Smolt | 30–80     | Brackish water* | Troms     | 68°39'N, 17°12'E |
| 3     | 29.11.2007 | Adult | 1500–2000 | Seawater        | Hordaland | 59°47'N, 06°10'E |

\* Seawater acclimatization before smoltification, freshwater added salt/seawater to a salinity of 1.6–2.0‰.

were performed, in the search for distinguishing characters for the novel species *Ichthyobodo salmonis* sp. n. (syn. *Ichthyobodo* sp. II sensu Todal *et al.* 2004) when compared to *I. necator* s.s.

#### MATERIALS AND METHODS

##### *Samples for identification and description of Ichthyobodo spp.*

Gill samples were collected from *Ichthyobodo*-infected Atlantic salmon (*Salmo salar*) from 3 farms in Western and Northern Norway (Table 1) and examined with molecular and morphological methods. All farms reported gill disease or increased mortality prior to the period of sampling.

Samples from all farms included gills preserved in 90% ethanol (for PCR) and air-dried smears from the gills (for light microscopy). Gill samples fixed in a modified Karnovsky fixative (Nylund *et al.* 2010) for electron microscopy were obtained from farms 2–3 (Table 1). In addition, material and measurements of *I. necator* s.s. from salmon parr (material of Isaksen *et al.* 2007), was used for interspecific comparisons.

##### *Small subunit ribosomal RNA gene sequences (SSU rDNA)*

Total DNA from the ethanol-preserved tissue samples was isolated using QIAmp<sup>®</sup> DNA mini kit (Cat.no. 51304) and protocol for DNA purification from tissues (Qiagen). PCR and sequencing was performed using primers described by Isaksen *et al.* (2010). PCR products were purified using E.Z.N.A.<sup>™</sup> Cycle Pure Kit (Omega Bio-Tek) and then sequenced with BigDye Terminator v3.1 cycle sequencing kit (Applied Biosystem). The sequence data were assembled with the software ContigExpress (VectorNTI Suite 9.0.0) and compared with sequences in the GenBank database with NCBI BLAST searching.

##### *Morphological measurements*

Samples for morphological analyses were tested by PCR using diagnostic primers specific for *Ichthyobodo* sp. II sensu Todal *et al.* (2004) and for

*I. necator* s.s. (CoEur and CoNec primers respectively; Isaksen *et al.* 2010). The studied samples (Table 1) were positive for *Ichthyobodo* sp. II and negative for *I. necator* s.s.

Air-dried smears were stained with Colorrapiid-Set (Lucerna Chem AG) and the *Ichthyobodo* cells studied at 1000× magnification in a light microscope (ZEISS Axioskop 2 plus) equipped with a digital camera (Nikon Digital Sight DS-U1). The flagellates were measured on captured photos using the software ImageJ 1.42 (<http://rsb.info.nih.gov/ij/>). Morphometric data from *Ichthyobodo* cells were obtained as described by Isaksen *et al.* (2007). Flagellates were only measured when principal characters (cytostomeal protrusion, nucleus, flagellar pocket) were visible. The cytostomeal protrusion represents an easily recognizable starting point for the measurements (Fig. 1). Flagellar length was measured as the free part from the edge of the cell outline, since the path of the flagella in the flagellar pocket often was difficult to ascertain. The number of visible cytoplasmic basophilic granules (kinetoplasts) was counted.

##### *Scanning electron microscopy (SEM)*

Fixed gill tissues were washed in 0.2 M sodium phosphate buffer and post-fixed (1 h) in a 1% aqueous solution of osmium tetroxide (OsO<sub>4</sub>). The tissues were washed in distilled water and dehydrated with use of cold acetone in a 5×15 min series (60%; 90% and 3×100% acetone). Dehydrated tissues were further dried with the use of CO<sub>2</sub> in a critical-point drier (Polaron), attached onto stubs, coated with gold-palladium (Polaron SC502 Sputter Coater, Fison Instruments) and examined in scanning electron microscopy (ZEISS Supra 55VP).

##### *Transmission electron microscopy (TEM)*

Fixed samples were washed in sodium phosphate buffer, post-fixed in OsO<sub>4</sub> (2%) and dehydrated as described above for SEM. After acetone dehydration the tissues were embedded in EMBED 812 resin (Electron Microscopy Science, Hatfield, PA, USA). Ultrathin sections were cut and stained as described by Nylund *et al.* (2010).

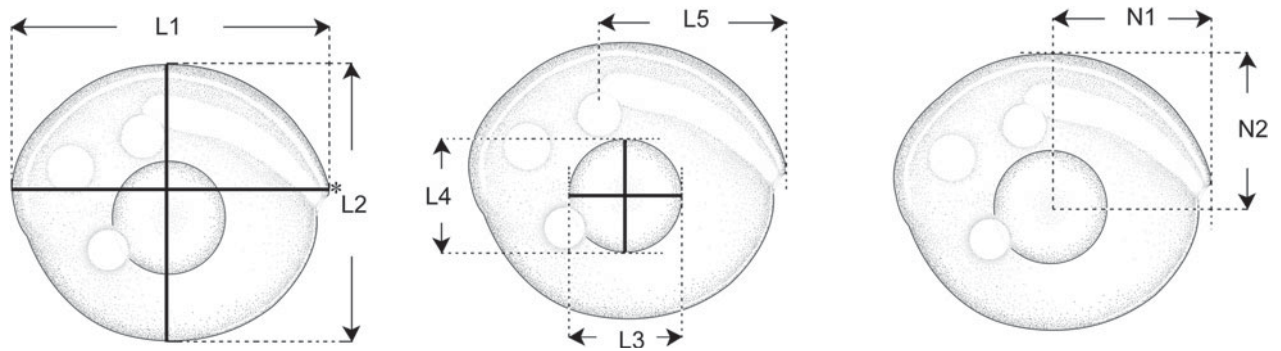


Fig. 1. Measurements of *Ichthyobodo* cells. L1, maximum cell length measured from a nose-like protrusion\* (starting point); L2, maximum cell width measured right-angled to L1; L3 and L4, nucleus diameter measured paralleled to L1 and L2 respectively; L5, extents of the flagellar pocket; N1 and N2, nucleus position. Centre of nucleus measured parallel to L1 and L2.

### Statistical methods

A dataset with measurements of *I. necator* s.s. referred to by Isaksen *et al.* (2007) was used for statistical comparison with *Ichthyobodo* sp. n. (described below). The measurements of *Ichthyobodo* spp. were compared using Student's *t*-test, following normality testing in Statistica®. Since many measurements correlated with cell size, analysis of covariance (ANCOVA) was used to examine whether inter-specific differences revealed by the Student's *t*-tests could be attributed to mere size differences of the cells in the two species. This was done to reveal good distinguishing characters. Probabilities ( $P$ ) < 0.05 were considered significant.

## RESULTS

### SSU rDNA sequencing

Partial SSU rDNA sequences obtained from the different *Ichthyobodo* sp. samples from Atlantic salmon collected in fresh-, brackish- and seawater (Table 1) showed 99.9–100.0% identity with each other (GenBank Accession nos. JF290204, JF290203, JF290205, representing farms 1, 2 and 3 respectively) and with *Ichthyobodo* sp. II *sensu* Todal *et al.* 2004 (GenBank Accession nos. AY229972, AY229973, AY224685, AY224686).

Compared with *Ichthyobodo* sp. III of Todal *et al.* (2004), from masu salmon (*Oncorhynchus masou*) in Japan (AY224689), the present *Ichthyobodo* sp. sequences differed by 2 deletions and 9–10 substitutions (99.3–99.4% identity). *Ichthyobodo necator* s.s. from freshwater reared salmon in Norway (AY224691, GQ184295, GQ184296) showed 92.3–92.5% similarity with the present *Ichthyobodo* sp. sequences. Based on 100% sequence similarity with the undescribed species designated *Ichthyobodo* sp. II by Todal *et al.* (2004), the present material is identified with that species and described below as a novel species, *Ichthyobodo salmonis* sp. n.

### Taxonomic summary

- *Ichthyobodo salmonis* sp. n.
- Synonym: *Ichthyobodo* sp. II *sensu* Todal *et al.* (2004).
- Etymology: After the type host.
- Type host: *Salmo salar* L.
- Type locality: Grovfjord, Troms county, Northern Norway (68°39'N, 17°12'E).
- Additional locations: Etne and Eidfjord, Hordaland county, Western Norway (present study), Masfjorden and Ytre Sogn, Hordaland and Sogn and Fjordane counties, Western Norway (Todal *et al.* 2004).
- Site: Gills and skin.
- Museum material: Syntypes, air-dried stained slide deposited in Zoological Museum, University of Bergen, Norway, ZMBN 87075.
- SSU rDNA sequences: GenBank Accession numbers JF290203, JF290204, JF290205 (present study); AY229972, AY229973, AY224685, AY224686 (Todal *et al.* 2004) (partial sequences).

### Novel species description

In live observations with the use of light microscopy, free forms of *I. salmonis* sp. n. move in a rapid, spinning and non-directional manner. No movement was apparent in the attached cells. The descriptions of the parasite refer to morphology of cells in stained smears (main characters shown in Fig. 2) and with the use of electron microscopy (SEM, TEM) of attached trophozoites.

### Free form of *I. salmonis* sp. n. (Table 2)

The free form of the flagellates in stained smears is rounded or oval, with a length/width relationship ( $C_i$ ) larger than 1.

The flagellar pocket is seen as a bright area in the cell, to the right of the nucleus (e.g. Fig. 3 G, J, K).

Table 2. Measurements of the free form of *Ichthyobodo salmonis* sp. n. from the gills of Atlantic salmon (*Salmo salar*)

(FW, freshwater; BW and SW, brackish- and seawater. *N*, number of cells examined. Last column (*P*) gives the results of Student's *t*-tests, comparing measurements of the flagellates from FW and BW/SW.)

| Measurement  | Code | FW       |      |      |      |       | BW and SW |      |      |      |       | <i>P</i> |
|--|------|----------|------|------|------|-------|-----------|------|------|------|-------|----------|
|  |      | <i>n</i> | Mean | s.d. | Min  | Max   | <i>n</i>  | Mean | s.d. | Min  | Max   |          |
| Cell length ( $\mu\text{m}$ )                      | L1   | 24       | 11.4 | 1.2  | 9.3  | 13.4  | 40        | 10.7 | 0.8  | 8.9  | 12.3  | **       |
| Cell width ( $\mu\text{m}$ )                       | L2   | 24       | 10.2 | 1.2  | 7.7  | 13.0  | 40        | 9.2  | 0.9  | 7.6  | 11.8  | ***      |
| Cell shape index (L1/L2)                           | Ci   | 24       | 1.12 | 0.08 | 0.99 | 1.28  | 40        | 1.16 | 0.08 | 1.00 | 1.33  | n.s.     |
| Cell area ( $\mu\text{m}^2$ )                      | Ac   | 24       | 90.3 | 19.5 | 51.3 | 131.8 | 40        | 74.4 | 12.3 | 50.1 | 105.6 | ***      |
| Nucleus area ( $\mu\text{m}^2$ )                   | An   | 24       | 14.0 | 2.7  | 7.8  | 20.5  | 40        | 13.9 | 3.1  | 8.2  | 20.4  | n.s.     |
| Area index (An/Ac)                                 | Ai   | 24       | 0.16 | 0.02 | 0.12 | 0.20  | 40        | 0.19 | 0.03 | 0.14 | 0.25  | ***      |
| Position of nucleus at L1 ( $\mu\text{m}$ )        | N1   | 24       | 5.8  | 0.8  | 4.4  | 7.2   | 40        | 5.2  | 0.6  | 4.2  | 7.0   | **       |
| Position of nucleus at L2 ( $\mu\text{m}$ )        | N2   | 24       | 5.9  | 0.9  | 4.4  | 8.3   | 40        | 5.3  | 0.7  | 3.6  | 6.6   | **       |
| Nucleus position index NL (N1/L1)                  | NLi  | 24       | 0.51 | 0.04 | 0.42 | 0.58  | 40        | 0.49 | 0.04 | 0.43 | 0.62  | n.s.     |
| Nucleus position index NW (N2/L2)                  | NWi  | 24       | 0.59 | 0.06 | 0.49 | 0.72  | 40        | 0.58 | 0.05 | 0.45 | 0.68  | n.s.     |
| Nucleus position index NP (N1/L5)                  | NPi  | 21       | 0.88 | 0.14 | 0.72 | 1.13  | 40        | 0.84 | 0.12 | 0.65 | 1.13  | n.s.     |
| Nucleus dimensions at L1 ( $\mu\text{m}$ )         | L3   | 24       | 4.1  | 0.6  | 3.1  | 5.8   | 40        | 4.0  | 0.6  | 3.0  | 5.3   | n.s.     |
| Nucleus dimensions at L2 ( $\mu\text{m}$ )         | L4   | 24       | 3.8  | 0.3  | 3.0  | 4.4   | 40        | 3.9  | 0.6  | 3.1  | 5.5   | n.s.     |
| Nucleus shape index (L3/L4)                        | Ni   | 24       | 1.07 | 0.12 | 0.94 | 1.40  | 40        | 1.02 | 0.10 | 0.85 | 1.24  | n.s.     |
| Extent of flagellar pocket at L1 ( $\mu\text{m}$ ) | L5   | 21       | 6.7  | 1.1  | 4.4  | 8.5   | 40        | 6.3  | 0.9  | 4.2  | 8.8   | n.s.     |
| Pocket index (L5/L1)                               | Pi   | 21       | 0.59 | 0.08 | 0.46 | 0.77  | 40        | 0.59 | 0.07 | 0.43 | 0.75  | n.s.     |
| Total numbers of kinetoplasts                      | Kp   | 20       | 45.5 | 9.4  | 23   | 68    | 33        | 40.8 | 12.0 | 23   | 64    | n.s.     |

n.s., Not significant; \*  $P < 0.05$ ; \*\*  $P < 0.01$ ; \*\*\*  $P < 0.001$ .

The pocket typically extends more than half the cell length, ending at the level of the posterior part of the nucleus. The pocket opens antero-ventrally into a longitudinal groove extending to the opposite side along the cell margin.

Both bi- and quadri-flagellated cells were observed, with 1 short and 1 long flagellum or 2 pairs of unequal length. The free part of the shorter flagellum was generally half the length of the longer, in stained smears measuring  $8.6 \pm 2.4 \mu\text{m}$  (mean  $\pm$  s.d.) (range 4–13  $\mu\text{m}$ ,  $n = 22$ ) and  $15.0 \pm 3.4$  (8–21  $\mu\text{m}$ ,  $n = 32$ ) respectively.

The nucleus is rounded and centrally located in the cell, constituting ca. 1/6th of the cell area.

A pale, bent, rod-like structure (axostyle) is often apparent along the right cell margin, originating in the cytostomeal protrusion and reaching to the posterior end.

One prominent apparent vacuole (V1) is commonly evident in an area close to the posterior part of the nucleus, on the left side. This vacuole typically takes a bluish colour in the stained preparations. Two additional, but colourless vacuoles may also be observed on the right side (V2 and V3), V3 is located close to the flagellar pocket (Figs 2 and 3).

Kinetoplasts (Kp, Fig. 3) are visible as intensely stained, regular-sized grains. No regular pattern of distribution in the cell was evident, but they rarely occurred in the pocket-groove region and on the nucleus.

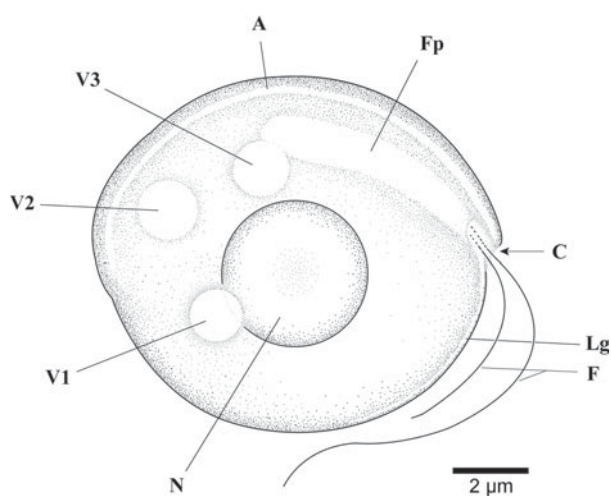


Fig. 2. Characteristic structure of *Ichthyobodo salmonis* sp. n. (free form) from Atlantic salmon (*Salmo salar*). Kinetoplasts not drawn. Ventral view. A, axostyle; C, cytostomeal protrusion (anterior part of the cell); F, flagella; Fp, flagellar pocket; Lg, longitudinal groove; N, nucleus; V, vacuoles.

#### Trophozoites of *I. salmonis* sp. n. (Table 3)

Trophozoites are pyriform in shape, pointed to the attachment area. The pointed end contains the anterior end of the axostyle. When apparent, the axostyle extends posterior along the right cell margin adjacent to the flagellar pocket. The longitudinal

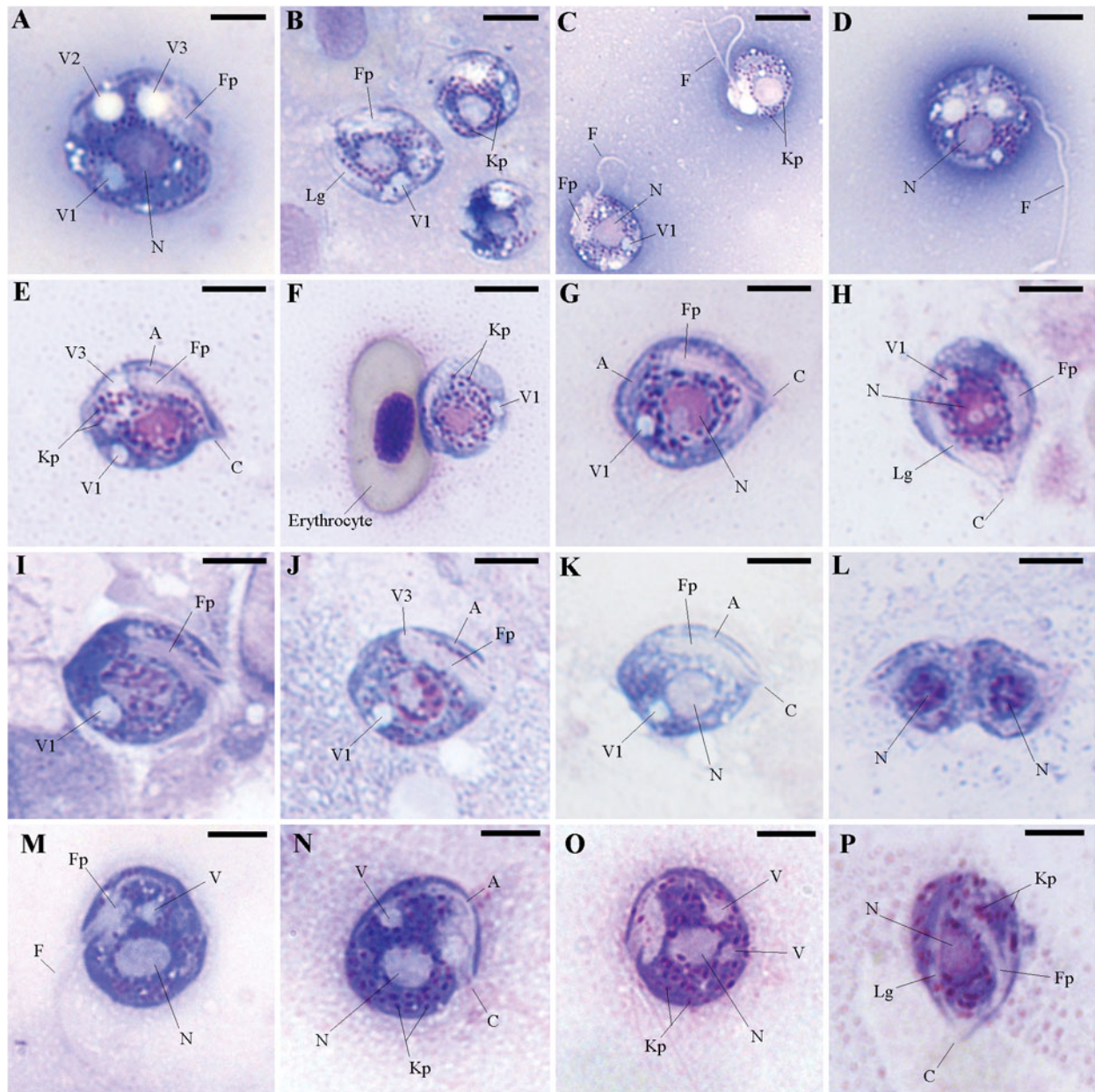


Fig. 3. *Ichthyobodo* spp. from skin and gills of Atlantic salmon (*Salmo salar*). Stained smears of *Ichthyobodo salmonis* sp. n. from gills of salmon in freshwater (A–D), brakish water (E–H) and seawater (I–L). *Ichthyobodo necator* from salmon parr shown for comparison (M–P). H and P, trophozoites; L, dividing form; C, cytostome; F, flagella; Fp, flagellar pocket; Kp, kinetoplasts; Lg, longitudinal groove; N, nucleus; V, vacuoles. Scale bars = 5 μm.

groove is more often easily visible in trophozoites than in free forms of the flagellate. In stained smears, the groove and the flagellar pocket form a characteristic Y-shaped pattern in the cell (e.g. Fig. 3H).

Two vacuoles may occur; one is commonly seen and shows the same characteristic staining as V1 in the free form (Figs 2 and 3). The second vacuole is occasionally seen near the flagellar pocket. The kinetoplasts are scattered as described for the free form.

SEM observations revealed 2 spine-like projections clearly visible on the ventral side of the cell (Fig. 4 D, E, G). One ‘spine’ appears close to the cell margin on the pocket side and the second one more posterior at the end of the longitudinal groove

(Fig. 4). Both 2- and 4- flagellated trophozoites are seen with SEM, with 1 or 2 pairs of flagellae of unequal length. The long flagellae reach past the posterior tip of the trophozoite, while the short flagellae end inside the groove. TEM sections of the attachment disc and cytostome process show a smooth surface of this structure in *I. salmonis* sp. n. (Fig. 6).

*Intraspecific variations (Tables 2 and 3)*

Measurements of the free forms of *I. salmonis* sp. n. from the different infections in fresh-, brakish- and seawater were compared. No significant differences in cell dimension between isolates from

Table 3. Attached form (trophozoites) of *Ichthyobodo salmonis* sp. n. from gills of Atlantic salmon (*Salmo salar*)

(Measurements of genetically identical (SSU rDNA) flagellates from different macrohabitats. FW, freshwater; BW and SW, brackish- and seawater, *n*, number of cells examined. Last column (*P*) gives the results of Student's *t*-tests, comparing measurements of the flagellates from FW and BW/SW.)

| Measurement  | Code | FW       |      |      |      |      | BW and SW |      |      |      |      | <i>P</i> |
|--|------|----------|------|------|------|------|-----------|------|------|------|------|----------|
|  |      | <i>n</i> | Mean | s.d. | Min  | Max  | <i>n</i>  | Mean | s.d. | Min  | Max  |          |
| Cell length ( $\mu\text{m}$ )                      | L1   | 12       | 11.9 | 1.6  | 9.9  | 14.4 | 13        | 11.6 | 1.2  | 10.0 | 14.2 | n.s.     |
| Cell width ( $\mu\text{m}$ )                       | L2   | 12       | 7.0  | 1.1  | 5.0  | 8.5  | 13        | 7.5  | 1.0  | 5.4  | 9.1  | n.s.     |
| Cell shape index (L1/L2)                           | Ci   | 12       | 1.72 | 0.19 | 1.44 | 2.03 | 13        | 1.55 | 0.16 | 1.34 | 1.83 | *        |
| Cell area ( $\mu\text{m}^2$ )                      | Ac   | 11       | 60.4 | 16.5 | 36.1 | 84.7 | 13        | 60.0 | 12.5 | 36.2 | 78.5 | n.s.     |
| Nucleus area ( $\mu\text{m}^2$ )                   | An   | 10       | 10.2 | 3.7  | 4.5  | 14.4 | 13        | 9.7  | 2.5  | 3.9  | 14.8 | n.s.     |
| Area index (An/Ac)                                 | Ai   | 10       | 0.16 | 0.04 | 0.12 | 0.24 | 13        | 0.16 | 0.03 | 0.11 | 0.21 | n.s.     |
| Position of nucleus at L1 ( $\mu\text{m}$ )        | N1   | 12       | 5.9  | 1.1  | 4.5  | 7.5  | 13        | 5.9  | 0.3  | 5.3  | 6.3  | n.s.     |
| Position of nucleus at L2 ( $\mu\text{m}$ )        | N2   | 12       | 3.6  | 0.5  | 2.6  | 4.4  | 13        | 3.9  | 0.7  | 2.7  | 5.4  | n.s.     |
| Nucleus position index NL (N1/L1)                  | NLi  | 12       | 0.49 | 0.04 | 0.42 | 0.55 | 13        | 0.51 | 0.05 | 0.41 | 0.59 | n.s.     |
| Nucleus position index NW (N2/L2)                  | NWi  | 12       | 0.52 | 0.05 | 0.43 | 0.61 | 13        | 0.51 | 0.04 | 0.46 | 0.59 | n.s.     |
| Nucleus position index NP (N1/L5)                  | NPi  | 11       | 0.66 | 0.09 | 0.56 | 0.86 | 12        | 0.69 | 0.06 | 0.59 | 0.80 | n.s.     |
| Nucleus dimensions at L1 ( $\mu\text{m}$ )         | L3   | 10       | 3.7  | 0.8  | 2.5  | 4.9  | 13        | 3.5  | 0.5  | 2.5  | 4.3  | n.s.     |
| Nucleus dimensions at L2 ( $\mu\text{m}$ )         | L4   | 10       | 2.9  | 0.7  | 1.6  | 3.7  | 13        | 3.1  | 0.5  | 1.8  | 3.8  | n.s.     |
| Nucleus shape index (L3/L4)                        | Ni   | 10       | 1.30 | 0.22 | 1.13 | 1.85 | 13        | 1.15 | 0.10 | 1.03 | 1.40 | *        |
| Extent of flagellar pocket at L1 ( $\mu\text{m}$ ) | L5   | 11       | 8.8  | 1.4  | 7.0  | 10.9 | 12        | 8.6  | 0.7  | 7.1  | 9.7  | n.s.     |
| Pocket index (L5/L1)                               | Pi   | 11       | 0.74 | 0.05 | 0.64 | 0.80 | 12        | 0.75 | 0.07 | 0.67 | 0.94 | n.s.     |
| Total numbers of kinetoplasts                      | Kp   | 2        |      |      | 40   | 46   | 7         | 33.3 | 8.2  | 21   | 46   | n.s.     |

n.s., Not significant ; \*  $P < 0.05$ ; \*\*  $P < 0.01$ ; \*\*\*  $P < 0.001$ .

brackish- and seawater ( $n = 19$  and  $n = 21$  respectively) could be detected.

However, the flagellates in the freshwater infection were significantly larger compared to those from brackish and seawater (Ac:  $t = -4$ , D.F. = 62,  $P < 0.001$ ). The cell shape (Ci) was similar, and there were no resultant relative changes in the position or extent of the nucleus and flagellar pocket, respectively, when cell size was accounted for (ANCOVA,  $P = 0.93$ ).

Vacuoles in positions V2 and V3 (Figs 2 and 3) are more frequently observed in flagellates from freshwater than those from brackish- and seawater.

The partial SSU sequences of *I. salmonis* sp. n. available (GenBank, present study) diverge by a maximum of 1 substitution (1801nt compared).

#### Comparison with *I. necator* (Tables 4 and 5)

Statistical comparison of measurements of *I. salmonis* sp. n. and *I. necator* s.s. (data of Isaksen *et al.* 2007) revealed significant differences in most dimensions and morphometric indices. *I. salmonis* sp. n. is significantly smaller than *I. necator*, being shorter and narrower with a clearly different shape (Ci) (Fig. 5 A). The flagellar pocket in *I. salmonis* sp. n. extends significantly more posterior than in *I. necator* s.s., and generally reaches posterior to the nucleus (NPi) (Fig. 5B).

The larger *I. necator* s.s. contain more kinetoplasts than *I. salmonis* sp. n.; however, kinetoplast counts correlate positively with cell size in both species and counts did not differ significantly when cell size was accounted for (ANCOVA,  $P = 0.28$ ).

Trophozoites of *I. salmonis* sp. n. were clearly smaller compared to those of *I. necator* s.s. Significant differences in most other measures between the two species proved to be related to these size differences (ANCOVA,  $P > 0.05$ ). However, the shape of the cells and the size of the nucleus differed when cell size was accounted for (ANCOVA,  $P < 0.01$ ).

The SEM observations of the trophozoites of *I. salmonis* sp. n. revealed a characteristic cell shape in dorsal view (Fig. 4B, C), and 2 spine-like projections clearly visible on the ventral side of the cell (Fig. 4D, E, G). No such structures can be detected in our SEM images of *I. necator* (e.g. Fig. 4H, I).

Longitudinal TEM sections revealed a smooth surface of the attachment disc and cytostome process in the trophozoites of *I. salmonis* sp. n. from different macrohabitats (Fig. 6). However, in *I. necator* the interface between the attachment disc and the host cell is conspicuously jagged (Fig. 7).

#### DISCUSSION

The genus *Ichthyobodo* (syn. *Costia* Leclercq, 1890) contains 3 named species, *I. necator* Henneguy, 1883,

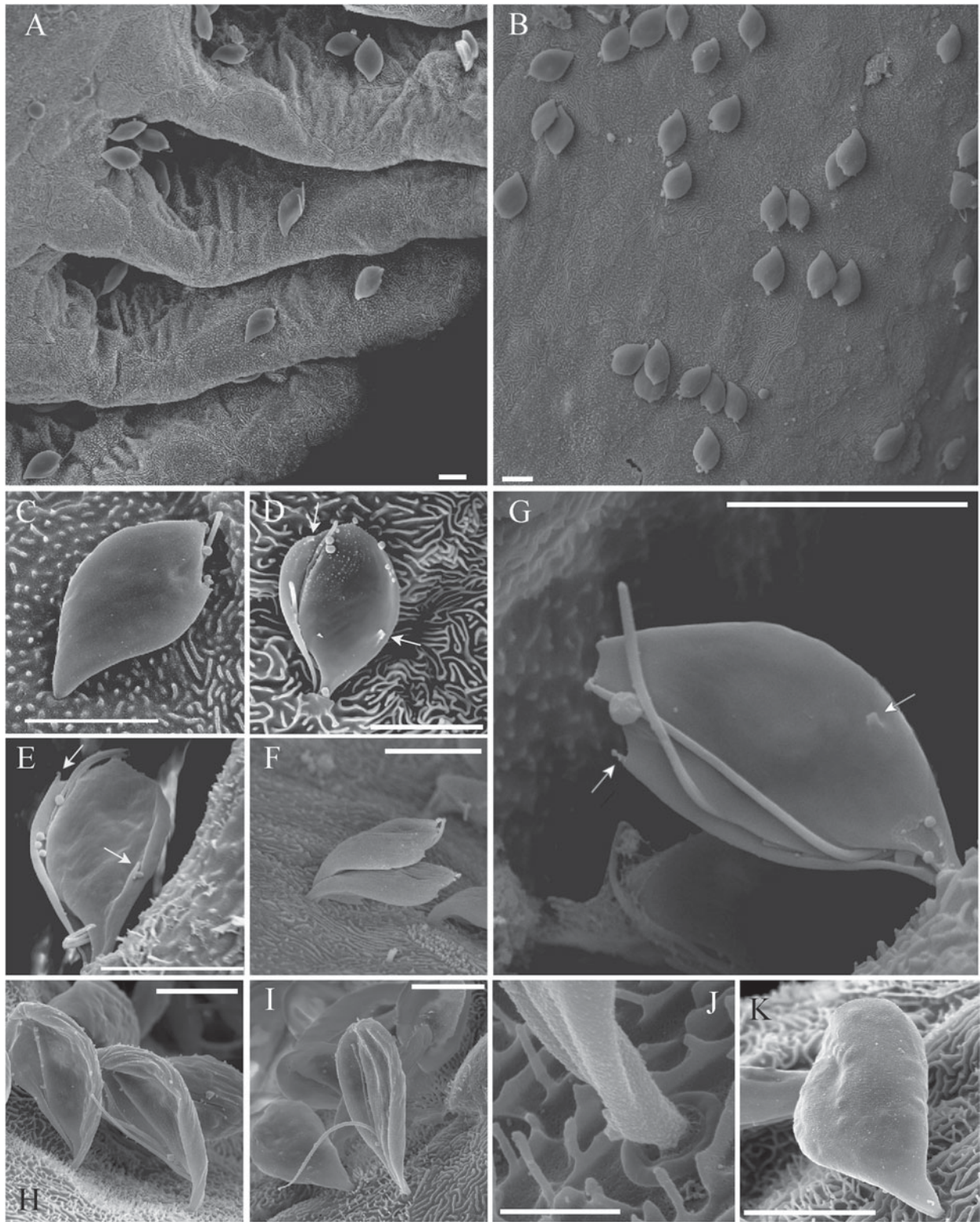


Fig. 4. Scanning electron microscopy (SEM) of *Ichthyobodo* spp. trophozoites on gills of Atlantic salmon (*Salmo salar*). (A–G) *Ichthyobodo salmonis* sp. n. from brackishwater reared smolt. (A) Trophozoites attached to secondary gill lamellae; (B) trophozoites attached on the surface of a primary gill filament; (C) Single trophozoite, dorsal view; (D) trophozoite, ventral view; (E) quadri-flagellated (2 long, 2 short flagella) trophozoite, ventral view; (F) 2 trophozoites; (G) quadri-flagellated, ventral view (1 short flagellum just visible in furrow); (H–K) *Ichthyobodo necator* s.s. from hatchery reared parr; (H) ventral view; (I) ventral view, flagella clearly visible; (J) same trophozoite shown in (I) close-up of the penetration area (scale bar = 1 µm); (K) dorsal view; (D, E and G) arrows mark spine-like surface projections characteristic for *I. salmonis* sp.n. All scale bars except (J) = 5 µm.

Table 4. Comparison of the free form of *Ichthyobodo salmonis* sp. n. and *Ichthyobodo necator* s.s. (data from Isaksen *et al.* 2007) from Atlantic salmon (*Salmo salar*)

(*n*, Number of cells examined. Last column (*P*) gives the results of Student's *t*-tests, comparing measurements of *I. salmonis* and *I. necator*.)

| Measurement                           | Code | <i>I. salmonis</i> sp. n. |      |      |      |      | <i>I. necator</i> s.s. |      |      |      |      | <i>P</i> |
|---------------------------------------|------|---------------------------|------|------|------|------|------------------------|------|------|------|------|----------|
|                                       |      | <i>n</i>                  | Mean | s.d. | Min  | Max  | <i>n</i>               | Mean | s.d. | Min  | Max  |          |
| Cell length (μm)                      | L1   | 64                        | 10.9 | 1.1  | 8.9  | 13.4 | 32                     | 11.7 | 1.1  | 8.7  | 13.6 | ***      |
| Cell width (μm)                       | L2   | 64                        | 9.6  | 1.4  | 7.6  | 13.0 | 32                     | 12.9 | 1.4  | 10.3 | 16.0 | ***      |
| Cell shape index (L1/L2)              | Ci   | 64                        | 1.15 | 0.08 | 0.99 | 1.33 | 32                     | 0.91 | 0.07 | 0.79 | 1.10 | ***      |
| Cell area (μm <sup>2</sup> )          | Ac   | 64                        | 80   | 17   | 50   | 132  | 32                     | 117  | 22   | 72   | 164  | ***      |
| Nucleus area (μm <sup>2</sup> )       | An   | 64                        | 14   | 3    | 8    | 21   | 31                     | 15   | 3    | 10   | 23   | n.s.     |
| Area index (An/Ac)                    | Ai   | 64                        | 0.18 | 0.03 | 0.12 | 0.25 | 31                     | 0.13 | 0.02 | 0.10 | 0.17 | ***      |
| Position of nucleus at L1 (μm)        | N1   | 64                        | 5.4  | 0.7  | 4.2  | 7.2  | 32                     | 6.4  | 0.7  | 4.7  | 7.7  | ***      |
| Position of nucleus at L2 (μm)        | N2   | 64                        | 5.5  | 0.9  | 3.6  | 8.3  | 32                     | 7.8  | 0.8  | 5.8  | 9.3  | ***      |
| Nucleus position index NL (N1/L1)     | NLi  | 64                        | 0.50 | 0.04 | 0.42 | 0.62 | 32                     | 0.55 | 0.03 | 0.46 | 0.60 | ***      |
| Nucleus position index NW (N2/L2)     | NWi  | 64                        | 0.58 | 0.06 | 0.45 | 0.72 | 32                     | 0.61 | 0.06 | 0.50 | 0.71 | *        |
| Nucleus position index NP (N1/L5)     | NPi  | 61                        | 0.86 | 0.13 | 0.65 | 1.13 | 29                     | 1.37 | 0.23 | 0.91 | 1.78 | ***      |
| Nucleus dimensions at L1 (μm)         | L3   | 64                        | 4.0  | 0.6  | 3.0  | 5.8  | 31                     | 4.3  | 0.4  | 3.6  | 5.0  | *        |
| Nucleus dimensions at L2 (μm)         | L4   | 64                        | 3.9  | 0.5  | 3.0  | 5.5  | 31                     | 3.9  | 0.5  | 3.2  | 4.9  | n.s.     |
| Nucleus shape index (L3/L4)           | Ni   | 64                        | 1.04 | 0.11 | 0.85 | 1.40 | 31                     | 1.11 | 0.10 | 0.96 | 1.36 | **       |
| Extent of flagellar pocket at L1 (μm) | L5   | 61                        | 6.4  | 1.0  | 4.1  | 8.8  | 29                     | 4.8  | 0.8  | 3.6  | 7.3  | ***      |
| Pocket index (L5/L1)                  | Pi   | 61                        | 0.59 | 0.07 | 0.43 | 0.77 | 29                     | 0.41 | 0.07 | 0.29 | 0.57 | ***      |
| Total numbers of kinetoplasts         | Kp   | 53                        | 42.6 | 11.2 | 23   | 68   | 19                     | 67.6 | 23.5 | 25   | 113  | ***      |

n.s., Not significant ; \* *P*<0.05; \*\* *P*<0.01; \*\*\* *P*<0.001.

Table 5. Comparison of the attached form (trophozoites) of *Ichthyobodo salmonis* sp. n. and *Ichthyobodo necator* s.s. (data from Isaksen *et al.* 2007) from Atlantic salmon (*Salmo salar*). (*n*, Number of cells examined. Last column (*P*) gives the results of Student's *t*-tests, comparing measurements of *I. salmonis* and *I. necator*.)

| Measurement                           | Code | <i>I. salmonis</i> sp. n. |      |      |      |      | <i>I. necator</i> s.s. |      |      |      |      | <i>P</i> |
|---------------------------------------|------|---------------------------|------|------|------|------|------------------------|------|------|------|------|----------|
|                                       |      | <i>n</i>                  | Mean | s.d. | Min  | Max  | <i>n</i>               | Mean | s.d. | Min  | Max  |          |
| Cell length (μm)                      | L1   | 25                        | 11.7 | 1.4  | 9.9  | 14.4 | 23                     | 15.3 | 1.6  | 12.3 | 17.4 | ***      |
| Cell width (μm)                       | L2   | 25                        | 7.3  | 1.1  | 5.0  | 9.1  | 23                     | 8.9  | 1.1  | 6.9  | 10.8 | ***      |
| Cell shape index (L1/L2)              | Ci   | 25                        | 1.63 | 0.19 | 1.34 | 2.03 | 23                     | 1.74 | 0.14 | 1.54 | 2.15 | *        |
| Cell area (μm <sup>2</sup> )          | Ac   | 24                        | 60   | 14   | 36   | 85   | 23                     | 97   | 23   | 60   | 143  | ***      |
| Nucleus area (μm <sup>2</sup> )       | An   | 23                        | 9.9  | 3.0  | 3.9  | 14.8 | 23                     | 12.7 | 3.6  | 6.4  | 18.4 | ***      |
| Area index (An/Ac)                    | Ai   | 23                        | 0.16 | 0.04 | 0.11 | 0.24 | 23                     | 0.13 | 0.02 | 0.10 | 0.16 | n.s.     |
| Position of nucleus at L1 (μm)        | N1   | 25                        | 5.9  | 0.8  | 4.5  | 7.5  | 23                     | 7.6  | 0.8  | 6.2  | 8.8  | ***      |
| Position of nucleus at L2 (μm)        | N2   | 25                        | 3.7  | 0.6  | 2.6  | 5.4  | 23                     | 5.1  | 0.9  | 3.6  | 6.7  | ***      |
| Nucleus position index NL (N1/L1)     | NLi  | 25                        | 0.50 | 0.05 | 0.41 | 0.59 | 23                     | 0.50 | 0.05 | 0.43 | 0.62 | **       |
| Nucleus position index NW (N2/L2)     | NWi  | 25                        | 0.51 | 0.04 | 0.43 | 0.61 | 23                     | 0.58 | 0.03 | 0.52 | 0.64 | n.s.     |
| Nucleus position index NP (N1/L5)     | NPi  | 23                        | 0.68 | 0.08 | 0.56 | 0.86 | 21                     | 0.75 | 0.07 | 0.61 | 0.90 | ***      |
| Nucleus dimensions at L1 (μm)         | L3   | 23                        | 3.6  | 0.6  | 2.5  | 4.9  | 23                     | 4.3  | 0.6  | 3.0  | 5.3  | **       |
| Nucleus dimensions at L2 (μm)         | L4   | 23                        | 3.0  | 0.6  | 1.6  | 3.8  | 23                     | 3.6  | 0.6  | 2.6  | 4.6  | **       |
| Nucleus shape index (L3/L4)           | Ni   | 23                        | 1.22 | 0.17 | 1.03 | 1.85 | 23                     | 1.18 | 0.12 | 1.02 | 1.50 | ***      |
| Extent of flagellar pocket at L1 (μm) | L5   | 23                        | 8.7  | 1.1  | 7.0  | 10.9 | 21                     | 10.2 | 0.9  | 8.3  | 11.8 | **       |
| Pocket index (L5/L1)                  | Pi   | 23                        | 0.74 | 0.06 | 0.64 | 0.94 | 21                     | 0.67 | 0.08 | 0.53 | 0.82 | ***      |
| Total numbers of kinetoplasts         | Kp   | 9                         | 35.4 | 8.5  | 21   | 46   | 3                      | 67.3 | 17.9 | 52   | 87   | **       |

n.s., Not significant ; \* *P*<0.05; \*\* *P*<0.01; \*\*\* *P*<0.001.



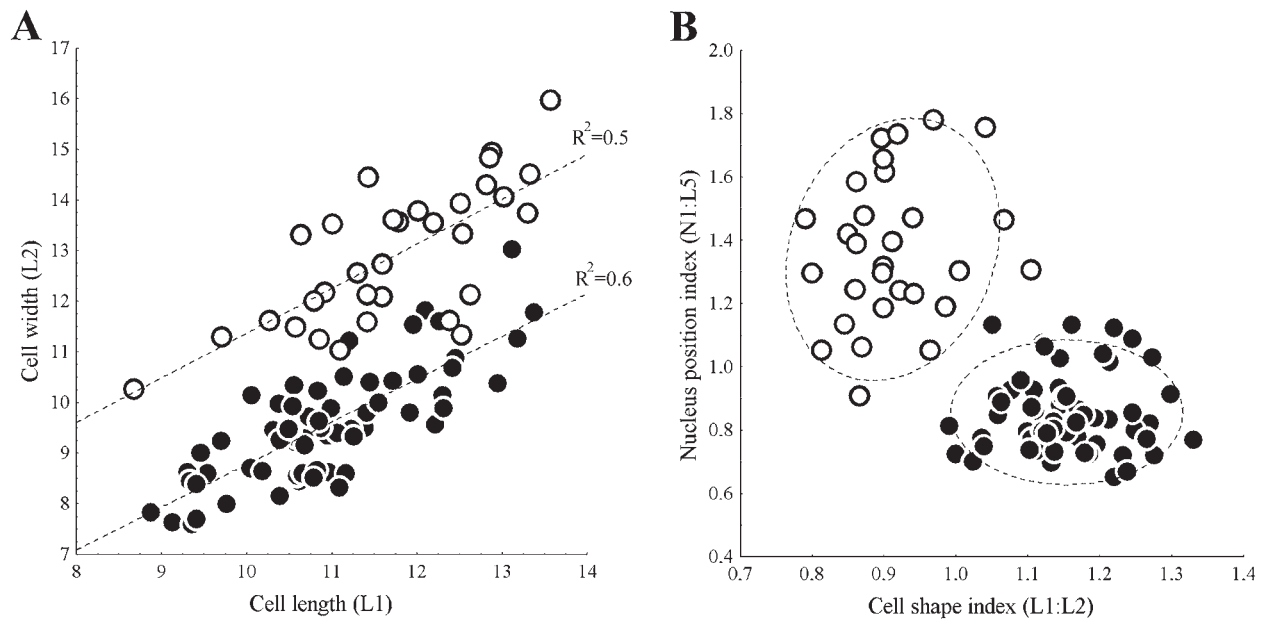


Fig. 5. Morphometric comparison of the free forms of *Ichthyobodo salmonis* sp. n. (●) and *Ichthyobodo necator* (○) from Atlantic salmon (*Salmo salar*). (A) Scatterplot showing cell width (L2) against cell length (L1). Least squares trend lines and corresponding  $R^2$ -values indicated. (B) Scatterplots (with 95% range ellipses) show the nucleus position index against the cell shape index. These indices represent the position of the nucleus related to extent of the flagellar pocket (N1:L5) and the length/width relationship (L1:L2); the measures which most clearly separate these species.

*I. nitschei* (syn. *Tetramitus nitschei* Weltner, 1894) and *I. hippoglossi* Isaksen *et al.* 2007. A fourth species, *Costia pyriformis* Davis, 1943 likely represents a member of a different genus (see Isaksen *et al.* 2007). The inadequately described *I. nitschei* from goldfish (*Carassius auratus*) may represent one of the several undescribed *Ichthyobodo* species detected in infected goldfish and other cyprinids through SSU rDNA sequencing (*Ichthyobodo* spp. VII and VIII, see Isaksen *et al.* 2007). *Ichthyobodo hippoglossi*, a parasite of the Atlantic halibut (*Hippoglossus hippoglossus*), is the only named marine species in the genus. It was distinguished from *I. necator sensu stricto* (s.s.) by Isaksen *et al.* (2007) on the basis of SSU rDNA sequences, cell shape, kinetoplast number and size and by the extent of the flagellar pocket.

*Ichthyobodo salmonis* sp. n. is clearly distinguished from *I. necator* and *I. hippoglossi* (DQ414520) by SSU sequence similarity (92 and 94%, respectively). Morphologically, *I. salmonis* can be distinguished from *I. hippoglossi* by its larger number of evenly sized small kinetoplasts, its characteristic stained vacuole-like structure (V1) and by the presence of spine-like surface structures on the ventral surface. The latter structures have never previously been detected in *Ichthyobodo* spp.

The most relevant morphological comparison is between *I. necator* and *I. salmonis*, since these may infect the same salmonid hosts. The very wide conception of *I. necator sensu lato* (s.l.) is partly due to the past confusion of these species in connection with ichthyobodosis in reared salmonids. When Isaksen *et al.* (2007) re-described *I. necator* from

juvenile salmon farmed in freshwater, they provided morphometric characters that may be used to separate *Ichthyobodo* spp. recognized by sequence information (e.g. SSU rDNA). In the present study, we show that free forms and trophozoites of *I. salmonis* sp. n. from both fresh- and seawater were smaller than those of *I. necator* s.s. Bruno (1992) performed morphometric comparisons of *Ichthyobodo* spp. trophozoites in gill sections from farmed salmon in seawater and salmon and other salmonids in freshwater. He found that the trophozoites from seawater-infections were significantly smaller than those in freshwater. He considered it likely that 2 different *Ichthyobodo* spp. were involved. Since the trophozoites of *I. salmonis* sp. n. are some 60–80% the size of those of *I. necator* s.s., it now appears likely that Bruno (1992) studied *I. salmonis* sp. n. infections (seawater) and infections dominated by *I. necator* s.s. (freshwater). It has been observed that *Ichthyobodo* sp. infections (usually identified as *I. necator* s.l.) acquired by salmonids in freshwater apparently survive sea-transfer of the smolt, often with proliferation of the parasite in the seawater phase leading to ichthyobodosis (gill disease) (Ellis and Wootten, 1978; Wood, 1979; Urawa and Kusakari, 1990). However, sodium chloride (NaCl) or seawater addition (salinity 1%) has been used to treat ichthyobodosis in freshwater salmonid hatcheries (see Todal *et al.* 2004), including infections now verified as being due to *I. necator* s.s. (Isaksen *et al.* 2007, 2010). Therefore, it appears that *I. necator* s.s. is a freshwater parasite, unable to survive in the marine environment. Hence the observations by Ellis and Wootten (1978) from Scotland likely

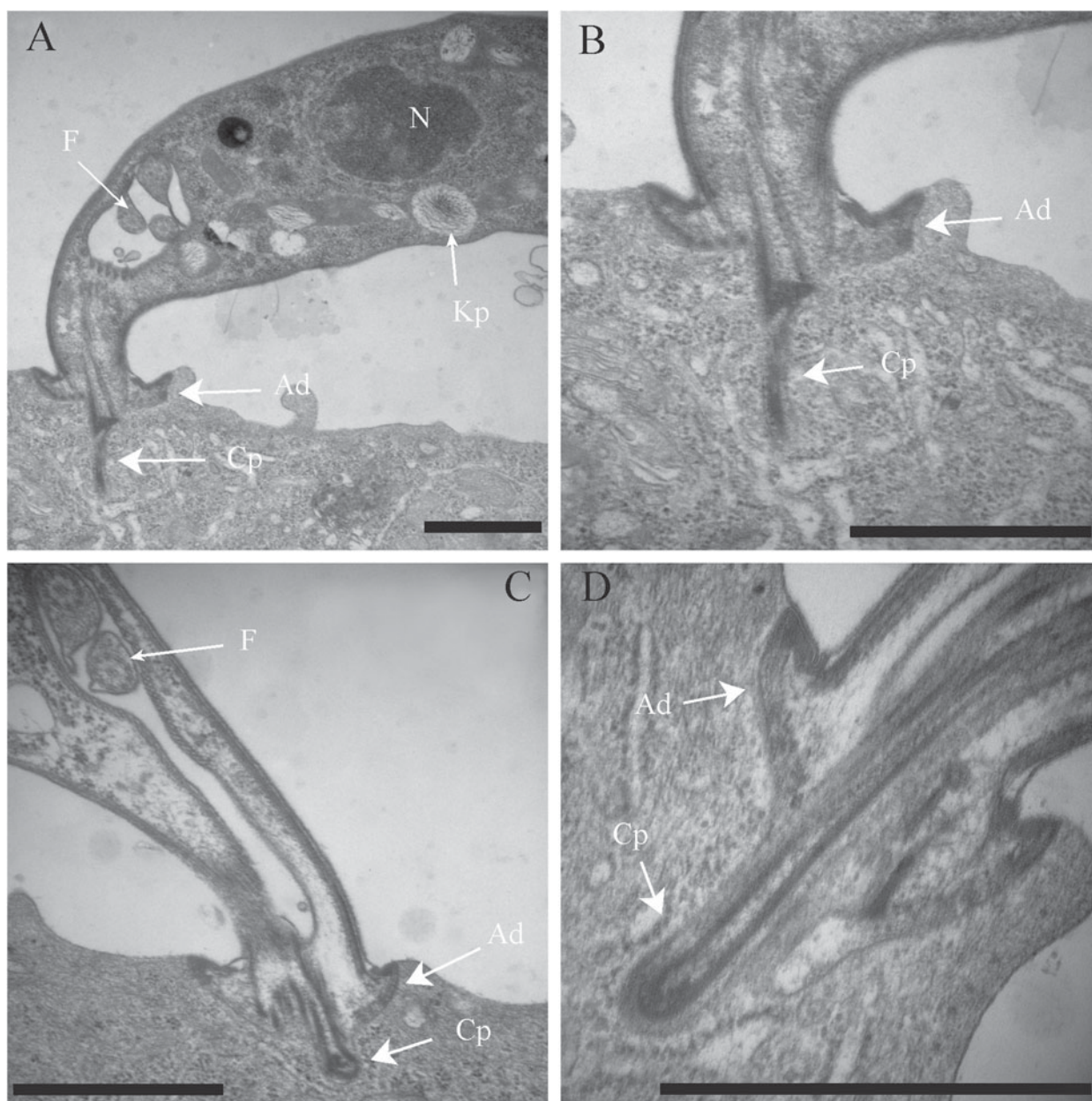


Fig. 6. Transmission electron microscopy (TEM) of *Ichthyobodo salmonis* sp.n. on the gills of Atlantic salmon (*Salmo salar*). (A–B) Trophozoites on salmon from brackish water; (C–D) trophozoites on salmon from seawater. Ad, Attachment disc; Cp, cytostome process; F, flagella; Kp, kinetoplasts; N, nucleus. All scale bars = 1  $\mu$ m.

represent *I. salmonis* sp. n. infections, as do other European reports of salmonid gill inflammation due to *I. necator* s.l. in the seawater phase (e.g. Poppe and Håstein, 1982). The euryhaline *Ichthyobodo* sp. infecting Pacific salmonids (Wood, 1979; Urawa and Kusakari, 1990) may represent *I. salmonis* sp. n. or other species. Todal *et al.* (2004) found a species closely related to *I. salmonis* sp. n. infecting Japanese masu salmon (*Oncorhynchus masou*). The masu parasite (*Ichthyobodo* sp. III) may prove conspecific with the euryhaline *Ichthyobodo* species studied and described (as *I. necator* s.l.) by Urawa and Kusakari (1990) from chum salmon (*Oncorhynchus keta*) in Japan. Measurements of the rounded free form of that parasite ( $10.1 \times 9.6 \mu\text{m}$ ) compares well with

*I. salmonis* sp. n., but SEM studies of the flagellates does not contain observations of the characteristic spine-like surface structures seen in *I. salmonis* sp.n. (Urawa and Kusakari, 1990).

Applying transmission electron microscopy (TEM), Roubal and Bullock (1987) noted ultrastructural differences in the attachment disc of *I. necator* s.l. from the skin and gills of Scottish salmonids in freshwater and from the gills of salmon in seawater. These authors concluded that the smooth disc in seawater and ridged disc seen in freshwater was associated with the macrohabitat, but did not exclude the possibility that 2 different *Ichthyobodo* spp. were involved. In the present study we confirm the observations by Roubal and Bullock (1987), and show that

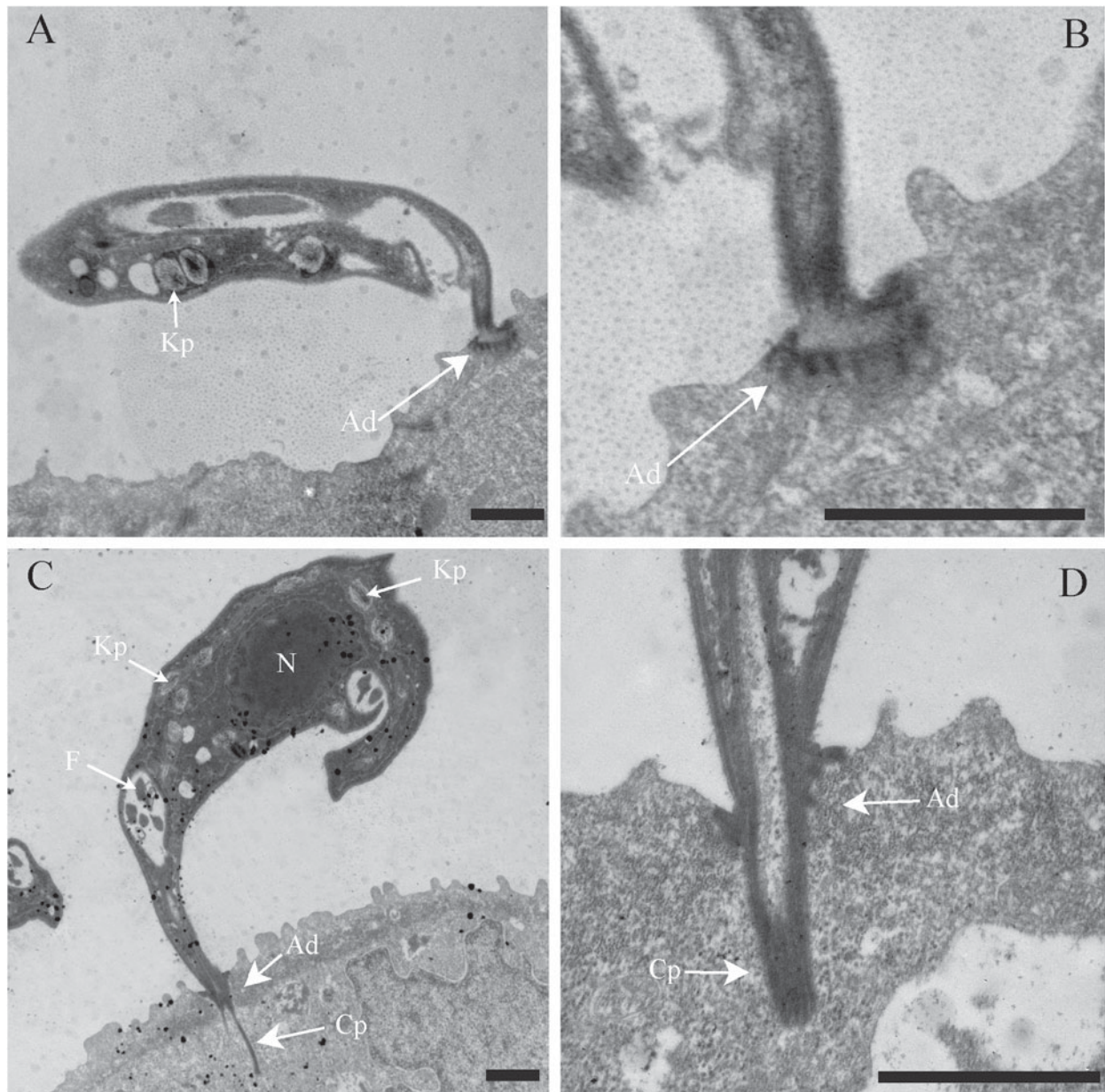


Fig. 7. Transmission electron microscopy (TEM) of *Ichthyobodo necator* on gills (A–B) and skin (C–D) of Atlantic salmon parr (*Salmo salar*) from freshwater. Ad, Attachment disc; Cp, cystostome process; F, flagella; Kp, kinetoplast; N, nucleus. All scale bars = 1  $\mu$ m.

smooth attachment discs occur in *I. salmonis* sp. n., while the jagged or ridged attachment disc is a (so far) a unique character of *I. necator* s.s.

*I. salmonis* sp. n., isolated from hosts reared in different environments (macrohabitat; fresh-, brackish- and seawater) were similar, but some differences were apparent. Notably, the free forms of the parasite from salmon in freshwater were larger than those in brackish and seawater, without this difference affecting cell shape. Also, in the free forms of *I. salmonis* sp. n. from the freshwater infection, a characteristic large vacuole (V3) close to the flagellar pocket was more commonly observed than in brackish- and seawater. The same observation was made by Urawa and Kusakari (1990) on *Ichthyobodo*

sp. infecting *O. keta*. This vacuole is most likely a contractile vacuole needed for osmoregulation (see Joyon and Lom, 1969; Kivic and Walne, 1984), which is probably much less conspicuous in the marine environment. The prominence of these vacuoles in freshwater may contribute to the larger cell size of *I. salmonis* sp. n. from freshwater as observed in our study.

A bluish stained vacuole-like structure (V1) characteristic for *I. salmonis* sp. n. shows a rather fixed position in the cell. Large vacuole-like structures with vesicular content were often seen in TEM images in this position, perhaps representing V1. The other vacuoles observed (V2) may represent food vacuoles (see Joyon and Lom, 1969; Isaksen *et al.* 2007).

## ACKNOWLEDGEMENTS

We would like to thank the managers of the salmon farms in Troms and Hordaland for collaboration and for supplying fish material used in this study. In particular, we would like to thank Bjørn Hugo Erntsen (Troms), Glenn Arve Sundnes (Hordaland) and Randi Haldorsen (Hordaland).

## FINANCIAL SUPPORT

The present study was funded by the Norwegian Research Council (Project no. 190448).

## REFERENCES

- Bauer, O.N.** (1959). The ecology of parasites of freshwater fish (relationship between parasite and environment). *Bulletin of the State Scientific Research Institute of Lake and River Fisheries* **49**, 3–215.
- Bruno, D.W.** (1992). *Ichthyobodo* sp. on farmed Atlantic salmon, *Salmo salar* L., reared in the marine environment. *Journal of Fish Diseases* **15**, 349–351.
- Ellis, A.E. and Wootten, R.** (1978). Costiasis of Atlantic salmon, *Salmo salar* L. smolts in seawater. *Journal of Fish Diseases* **1**, 389–393.
- Fish, F.F.** (1940). Notes on *Costia necatrix*. *Transactions of the American Fisheries Society* **70**, 441–445.
- Franke, J.** (1910). Radical prevention of *Costia necatrix* in salmonid fry. *Bulletin of the Bureau of Fisheries* **28**, 917–928.
- Isaksen, T.E., Karlsbakk, E. and Nylund, A.** (2007). *Ichthyobodo hippoglossi* n. sp. (Kinetoplastea: Prokinetoplastida: Ichthyobodonidae fam. nov.), an ectoparasitic flagellate infecting farmed Atlantic halibut *Hippoglossus hippoglossus*. *Diseases of Aquatic Organisms* **73**, 207–217.
- Isaksen, T.E., Karlsbakk, E., Sundnes, G.A. and Nylund, A.** (2010). Patterns of *Ichthyobodo necator* sensu stricto infections on hatchery reared salmon (*Salmo salar* L.) in Norway. *Diseases of Aquatic Organisms* **88**, 207–214. doi: 10.3354/dao02173.
- Joyon, L. and Lom, J.** (1969). Étude cytologique, systématique et pathologique d'*Ichthyobodo necator* (Henneguy, 1883) Pinto, 1928 (Zooflagelle). *Journal of Protozoology* **16**, 703–719.
- Kivic, P.A. and Walne, P.L.** (1984). An evaluation of a possible phylogenetic relationship between the Euglenophyta and Kinetoplastida. *Origins of Life and Evolution of the Biosphere* **13**, 269–288.
- Lamas, J. and Bruno, D.W.** (1992). Observations on the ultrastructure of the attachment plate of *Ichthyobodo* sp., from Atlantic salmon, *Salmo salar* L., reared in the marine environment. *Bulletin of the European Association of Fish Pathologists*, **12**, 171–173.
- Lom, J. and Dyková, I.** (1992). *Protozoan Parasites of Fishes*. Developments in Aquaculture and Fisheries Science, Vol. 26. Elsevier, Amsterdam, The Netherlands.
- Nylund, S., Nylund, A., Watanabe, K., Arnesen, C.E. and Karlsbakk, E.** (2010). *Paramucleospora theridion* n. gen., n. sp (Microsporidia, Enterocytozoonidae) with a life cycle in the salmon louse (*Lepeophtheirus salmonis*, Copepoda) and Atlantic salmon (*Salmo salar*). *Journal of Eukaryotic Microbiology* **57**, 95–114. doi: 10.1111/j.1550-7408.2009.00451.x.
- Poppe, T.T. and Håstein, T.** (1982). Costiasis in seawater-reared salmon smolts (*Salmo salar* L.). *Norsk Veterinærtidsskrift* **94**, 259–262 (in Norwegian).
- Robertson, D.A.** (1985). A review of *Ichthyobodo necator* (Henneguy, 1883) an important and damaging fish parasite. In *Recent Advances in Aquaculture* (ed. Muir, J. F. and Roberts, R. J.), pp. 1–30. Croom Helm, London, UK.
- Roubal, F.R. and Bullock, A.M.** (1987). Differences between the host-parasite interface of *Ichthyobodo necator* (Henneguy, 1883) on the skin and gills of salmonids. *Journal of Fish Diseases* **10**, 237–240.
- Schäperclaus, W.** (1929). Die Costienkrankheit der Fische. *Wochenschrift für Aquarien- und Terrarlenkunde*, **22**, 329–333.
- Todal, J.A., Karlsbakk, E., Isaksen, T.E., Plarre, H., Urawa, S., Mouton, A., Hoel, E., Koren, C. and Nylund, A.** (2004). *Ichthyobodo necator* (Kinetoplastida) - a complex of sibling species. *Diseases of Aquatic Organisms* **58**, 9–16.
- Urawa, S.** (1996). The pathobiology of ectoparasitic protozoans on hatchery-reared Pacific salmon. *Scientific Reports of the Hokkaido Salmon Hatchery*, **50**, 1–99.
- Urawa, S. and Kusakari, M.** (1990). The survivability of the ectoparasitic flagellate *Ichthyobodo necator* on Chum salmon fry (*Oncorhynchus keta*) in seawater and comparison to *Ichthyobodo* sp. on Japanese flounder (*Paralichthys olivaceus*). *Journal of Parasitology* **76**, 33–40.
- Urawa, S., Ueki, N. and Karlsbakk, E.** (1998). A review of *Ichthyobodo* infection in marine fishes. *Fish Pathology* **33**, 311–320.
- Wood, J.W.** (1979). *Diseases of Pacific Salmon: their Prevention and Treatment*, 3rd Edn. State of Washington. Department of Fisheries, Hatchery Division, Olympia, WA, USA.