

Original Paper

*Present address: Department of Urology, Sunagawa City Medical Center, Sunagawa, Japan.

†Present address: Shanghai University of Medicine and Health Sciences, College of Medical Instrument, Shanghai, China.

‡Present address: Faculty of Agriculture, Iwate University, Iwate, Japan.

§Present address: Central Laboratory Division, Akita University Hospital, Akita, Japan.

Cite this article: Matsukawa M *et al* (2019). Epidemiology and genotypic characterisation of dissemination patterns of uropathogenic *Escherichia coli* in a community. *Epidemiology and Infection* **147**, e148, 1–9. <https://doi.org/10.1017/S0950268819000426>

Received: 11 September 2018

Revised: 30 January 2019

Accepted: 5 February 2019

Key words:

molecular epidemiology; phylogenetic analysis; urinary tract infection; uropathogenic *Escherichia coli*

Author for correspondence:

M. Matsukawa,

E-mail: matsuk-uro@med.takikawa.hokkaido.jp

Epidemiology and genotypic characterisation of dissemination patterns of uropathogenic *Escherichia coli* in a community

M. Matsukawa¹, M. Igarashi^{1,*}, H. Watanabe², L. Qin^{2,†}, M. Ohnishi³, J. Terajima^{3,‡}, S. Iyoda³, T. Morita-Ishihara³, K. Tateda⁴, Y. Ishii⁴, T. Saga^{4,§}, K. Aoki⁴ and R. A. Bonomo^{5,6}

¹Department of Urology, Takikawa Municipal Hospital, Takikawa, Japan; ²Department of Infection Control and Prevention, Kurume University School of Medicine, Kurume, Japan; ³Department of Bacteriology I, National Institute of Infectious Diseases, Tokyo, Japan; ⁴Department of Microbiology and Infectious Diseases, Toho University School of Medicine, Tokyo, Japan; ⁵Medical Service, Louis Stokes Cleveland Veterans Affairs Medical Center, Cleveland, Ohio, USA and ⁶Department of Medicine, Pharmacology, Molecular Biology and Microbiology, and Case VA Center for Antimicrobial Resistance and Epidemiology (Case VA CARES), Cleveland, Ohio, USA

Abstract

To characterise the dissemination patterns of uropathogenic *Escherichia coli* (UPEC) in a community, we conducted a study utilising molecular and fundamental descriptive epidemiology. The subjects, consisted of women having community-acquired acute urinary tract infection (UTI), were enrolled in the study from 2011 to 2012. UPEC isolates were subjected to antibacterial-susceptibility testing, O serogrouping, phylotyping, multilocus-sequence typing with phylogenetic-tree analysis and pulsed-field-gel electrophoresis (PFGE). From the 209 unique positive urinary samples 166 UPEC were isolated, of which 129 were fully susceptible to the tested antibiotics. Of the 53 sequence types (STs), the four most prevalent STs (ST95, ST131, ST73 and ST357) accounted for 60% of all UPEC strains. Antimicrobial resistance was less frequently observed for ST95 and ST73 than for the others. A majority of rare STs and a few common STs constituted the diversity pattern within the population structure, which was composed of the two phylogenetically distinct clades. Eleven genetically closely related groups were determined by PFGE, which accounted for 42 of the 166 UPEC isolates, without overt geo-temporal clustering. Our results indicate that a few major lineages of UPEC, selected by unidentified factors, are disseminated in this community and contribute to a large fraction of acute UTIs.

Introduction

Acute urinary tract infections (UTIs) are one of the most common clinical syndromes encountered by clinicians. UTIs are mainly caused by uropathogenic *Escherichia coli* (UPEC) [1], which mostly originates from the intestinal flora [2, 3]. In contrast, epidemics of nosocomial UTIs are recognised to be due to UPEC strains and these clusters of infections occasionally present unusual phenotypes with antimicrobial resistance [4]. In community settings, UPEC can be sexually transmitted [5] and may also be shared among household members in the absence of sexual contact [6]. Moreover, community-wide occurrence and outbreaks of UTIs caused by genetically closely related lineages of drug-resistant UPEC strains are reported [7]. Interestingly, the pandemic lineages of UPEC have been recognised. These analyses clearly indicate that certain lineages of UPEC are clonally disseminated worldwide, but little is known about the mechanisms and extent of dissemination of UPEC strains in communities. Moreover, cases of community-acquired UTIs have not been characterised collectively according to time, place and person, though such analyses are the first steps of descriptive epidemiology for a transmissible disease [8]. Additionally, the majority of clinical studies [9, 10] have focused on antimicrobial resistance, which is not suitable for estimation of the whole population of UPECs including both antibiotic susceptible and resistant strains.

In this context, we conducted a molecular and epidemiological study utilizing genotyping methods to examine the dissemination pattern and population structure of UPEC strains that are responsible for community-acquired UTIs in the Japanese mid-sized city of Takikawa in Hokkaido, Japan. As of 31 January 2012, the city of Takikawa possessed an estimated population of 43 270 with 21 486 households. This permitted us to cover the designated sample area in cooperation with multiple institutions in order to minimise sampling bias. Our results, obtained by using integrating genotyping and fundamental epidemiological analysis, comprehensively characterise acute UTI as a transmissible disease.

© The Author(s) 2019. This is an Open Access article, distributed under the terms of the Creative Commons Attribution-NonCommercial-ShareAlike licence (<http://creativecommons.org/licenses/by-nc-sa/4.0/>), which permits non-commercial re-use, distribution, and reproduction in any medium, provided the same Creative Commons licence is included and the original work is properly cited. The written permission of Cambridge University Press must be obtained for commercial re-use.

Table 1. Drug-resistance rate^a and age of cases according to STs and CRGs

Classification (no. of strains)	Drug resistance % (no. of strains)	Age median (range)
All STs (166)	22.3% (37)	64 (16–90)
Non-HIF STs (66)	27.3% (18) ^b	68.5 (16–90) ^{f, g}
SIF STs (37)	24.3% (9)	70 (16–90)
MIF STs (29)	31.0% (9)	64 (16–90)
ST3510, CRG A (2)	0	46 (22–70)
HIF STs (100)	19.0% (19)	62 (17–90)
ST95 (48)	9.3% (4) ^{b, c}	58.5 (17–90) ^{f, g, h, i}
CRG H (12)	8.3% (1)	56 (20–90)
CRG D (5)	0	55 (46–74)
CRG E (3)	0	68 (64–77)
CRG F (3)	33.3% (1)	18 (17–59)
CRG G (3)	0	61 (47–84)
CRG C (2)	0	27 (23–31)
CRG I (2)	0	68.5 (64–73)
ST131 (20)	65.0% (13) ^{b, d}	67 (20–85) ^f
CRG B (3)	100.0% (3)	75 (70–82)
ST73 (17)	0 ^{b, e}	67 (34–84) ^{f, h}
CRG J (4)	0	62.5 (45–84)
CRG K (30)	0	66 (62–67)
ST357 (15)	13.3% (2) ^b	71 (30–84) ^{f, i}

ST, sequence type; HIF, high-isolation-frequency; MIF, middle-isolation-frequency; SIF, single-isolation-frequency; CRG, closely related group.

^aStrains that defined resistant to any of tested drugs were regarded as to have drug resistance.

^b $P = 2.012 \times 10^{-6}$, Fisher's exact multinomial test.

^{c, d, e} $P = 0.0068, 1.249 \times 10^{-5}, 0.0141$, respectively; Fisher's exact binomial test, compared with the sum of the other ST groups.

^f $P = 0.0407$ (χ^2 statistic = 9.986), Kruskal–Wallis test.

^{g, h, i} $P = 0.013, 0.021, 0.026$, respectively; Dunn's post hoc test.

the primers specified at the website of the University Warwick, UK (<http://enterobase.warwick.ac.uk/species/index/ecoli>). The allele sequences of the seven genes were submitted to the website for sequence types (STs). In addition, a MLST alignment was done using the concatenated nucleotide sequences of the seven gene fragments in the order *adk*, *fumC*, *gyrB*, *icd*, *mdh*, *purA* and *recA*. Aligned 3423-bp sequences were analysed for phylogeny reconstruction with the neighbour joining method utilizing the maximum composite likelihood model on MEGA5.2.2 [17].

Restriction fragment length polymorphism (RFLP) analysis

RFLP was performed using pulsed-field-gel electrophoresis (PFGE) analysis of *Xba*I-digested DNA from all *E. coli* isolates according to the Centers for Disease Control and Prevention (CDC) PulseNet protocols, with modifications, as described previously [18]. Briefly, PFGE was performed with the CHEF DR III system (Bio-Rad Laboratories, Tokyo, Japan) and gel images were captured with the Gel Doc EQ and Quantity One systems (Bio-Rad Laboratories, Inc., Tokyo, Japan). A dendrogram was generated from cluster analysis of the Dice coefficient based on the unweighted pair group method with arithmetic means using

the BioNumerics program (Applied Math, Kortrijk, Belgium). Isolates were considered to belong to a closely related group if their Dice similarity index was equal to or greater than 95%.

Statistical methods

To analyse categorical variables (e.g., drug resistance) with multiple groups, the exact multinomial test was performed and, if a result was significant, an exact binomial test for each group vs. the sum of the other groups was additionally performed. The Kruskal–Wallis test was utilised to compare continuous variables (e.g., age) of multiple groups and post hoc *P*-values of all possible pairs of groups were calculated by Dunn's method as needed. To identify temporal clustering, we tested whether the temporal distribution of strains could be distinguished from theoretical frequencies calculated using the Poisson formula $e^{-\mu}\mu^r/r!$, where μ is the mean of frequencies and r is the number of events. All analyses were performed with a *P*-value threshold for statistical significance of 0.05 using JMP software version 10.0 (SAS Institute), MEGA5.2.2 (Wineskin) and R version 3.5.1 (The R Foundation).

Results

Study subjects

A total of 247 specimens were collected. We checked for redundancies by verification of their identification number, date of birth and address. Consequently, 11 duplicated cases were identified. Only samples from the first visit were included in the analysis. Of the 236 non-duplicate samples, 209 had a significant number of viable bacterial counts. The identified species were *E. coli* ($n = 166$; 79.4% of isolates), *Staphylococcus saprophyticus* (11; 5.3%), *Citrobacter freundii* (4; 1.9%), *Staphylococcus epidermidis* (4; 1.9%), *Citrobacter amalonaticus* (3; 1.4%), *Staphylococcus aureus* (2; 1.0%), *Streptococcus agalactiae* (2; 1.0%), *Klebsiella pneumoniae* (2; 1.0%), and miscellaneous (15; 7.2%). The largest number of cases was from patients in their seventh decade; with a median age of 64 years (Fig. 1).

Antibiotic susceptibility testing (AST)

AST was carried out on all 166 *E. coli* isolates. Of these, 129 (77.7%) were fully susceptible to the tested drugs, 13 (7.8%) were resistant to at least one agent and 24 (14.5%) were resistant to two or more agents (Table 1, For detailed AST results see Supplementary Table S1).

O serogrouping and phylotyping

Of the 166 isolates, 104 isolates reacted to one of the 16 antisera: O1 ($n = 25$; 15.1% of *E. coli* isolates), O2 (17; 10.2%), O25 (17; 10.2%), O18 (13; 7.8%), O6 (6; 3.6%), O16 (6; 3.6%), O22 (6; 3.6%), O75 (4; 2.4%), O15 (3; 1.8%). O7, O8, O17, O63, O86a, O115 and O143 were positive for a single isolate (1; 0.6%) each. Therefore, 62 isolates were O-antigen untypeable (OUT). A majority of the *E. coli* isolates showed phylotype B2 (130 isolates; 78%) followed by D (19; 11%), B1 (10; 6%) and A (7; 4%).

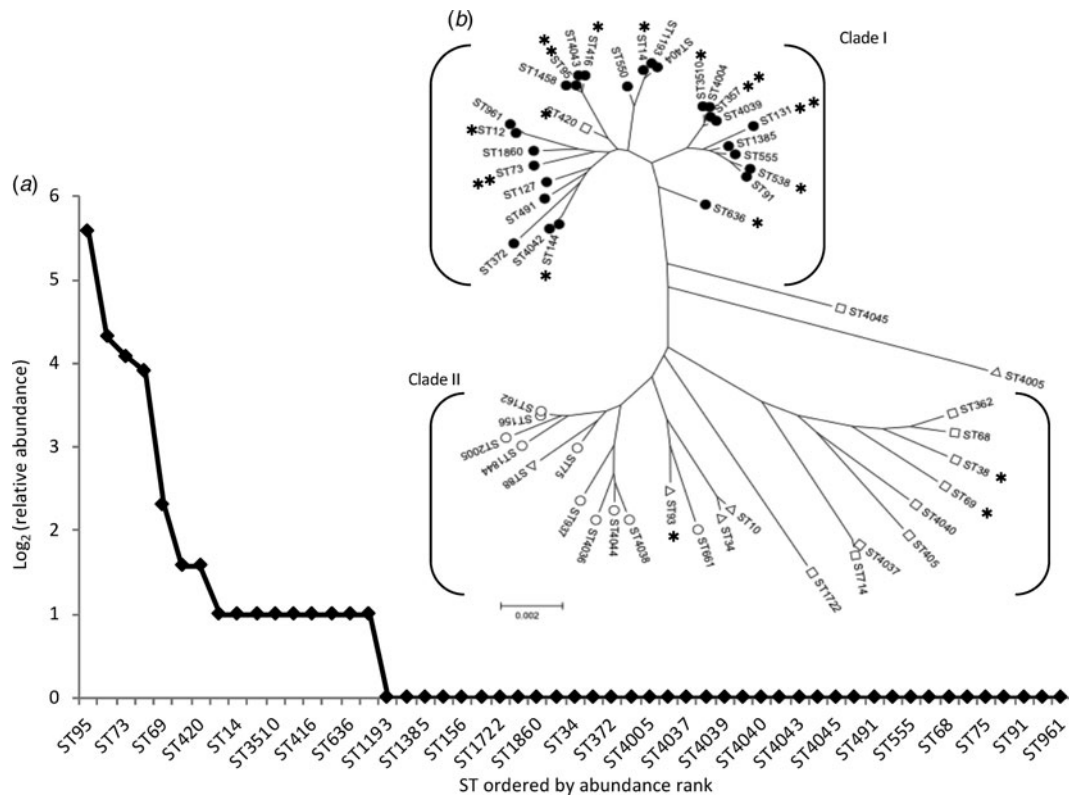


Fig. 2. The diversity and population structure of *Escherichia coli* causing community-acquired acute bacterial cystitis in Takikawa. (a) shows a relative-sequence-types abundance curve. This chart displays the diversity of sequence types. (b) shows a phylogenetic tree of the 53 STs, composed of the two distinct clades. **, high-isolation-frequency STs; *, middle-isolation-frequency STs; filled circles, phylotype B2; open circles, phylotype B1; open triangles, phylotype A; open squares, phylotype D. Of the 3 isolates of ST10, two isolates exhibited phylotype A and the other exhibited phylotype D.

MLST and phylogenetic analysis

The 166 *E. coli* isolates were analysed by MLST and assigned to 53 STs. Twelve STs (ST3510, ST4005, ST4036 to –40, ST 4042 to –45 and ST4678) from 13 isolates were novel to this study. Six of them contained new alleles (*adk349*, *adk350*, *fumC603*, *gyrB249*, *icd430*, *icd431*); the remaining six STs were composed of new combinations of previously sequenced alleles. The STs were classified into three categories according to their isolation frequencies in order to analyse the determining factors.

The most frequent STs were ST95 ($n = 48$; 29% of isolates), ST131 (20; 12%), ST73 (17; 10%) and ST357 (15; 9%). We designated these as high-isolation-frequency (HIF) STs. Thirty-seven STs were single-isolation-frequency (SIF). These were ST34, ST68, ST75, ST88, ST91, ST127, ST156, ST162, ST362, ST372, ST404, ST405, ST491, ST550, ST555, ST661, ST714, ST937, ST961, ST1193, ST1385, ST1458, ST1722, ST1844, ST1860, ST2005, ST4005, ST4036, ST4037, ST4038, ST4039, ST4040, ST4042, ST4043, ST4044, ST4045 and ST4678. The other 12 STs (ST10, ST12, ST14, ST38, ST69, ST144, ST93, ST416, ST420, ST538, ST636, and ST3510) were isolated from two to five patients each and were designated as middle-isolation-frequency (MIF) STs accounting for a total of 29 isolates. The distribution of STs, as a rank abundance diagram, is shown in Figure 2(a), indicating that only a few STs were common and the majority were rare.

Phylogenetic tree analysis (Fig. 2(b)) revealed that almost all (51 of 53) STs belonged to one of the two major clades, Clade I and II. All HIF STs and 75% (9 of 12) of MIF STs were assigned

to the Clade I, most constituents had the B2 phenotype (30 of 31), with a relatively shorter branch length compared with that of the Clade II, which was composed mainly of SIF STs and a few MIF STs, both of which exhibited phylotype A, B1, or D.

PFGE

PFGE was performed using *XbaI* on 166 isolates of *E. coli* and 160 patterns were available for analysis. Cluster analysis of Dice similarity indices identified 11 groups of closely related isolates using a 95% cut off value and a total of 42 isolates belonged to one of the 11 closely related groups, which were designated as closely related group A to K (closely related group, CRG, A to K) (Fig. 3). We labelled each CRG with a combination of the O serogroup, phylotype and ST as determined by MLST. The most commonly identified group was O1/OUT-B2-ST95-CRG H (12 isolates), followed by O2/OUT-B2-ST95-CRG D (5 isolates), O22/OUT-B2-ST73-CRG J (4 isolates) and O25-B2-ST131-CRG B (3 isolates).

Temporal and geographical patterns

Temporal patterns of cases with isolation of *E. coli* by week are shown in Figure 4. Fluctuations in the total number of cases and also in the proportion of the STs were observed throughout the study period. We then compared the actual frequencies of isolates by week to the theoretical frequencies (Supplementary Table S2). Our analysis did not find any significant difference ($P = 0.523$, $\chi^2 = 6.124$; χ^2 goodness of fit test).

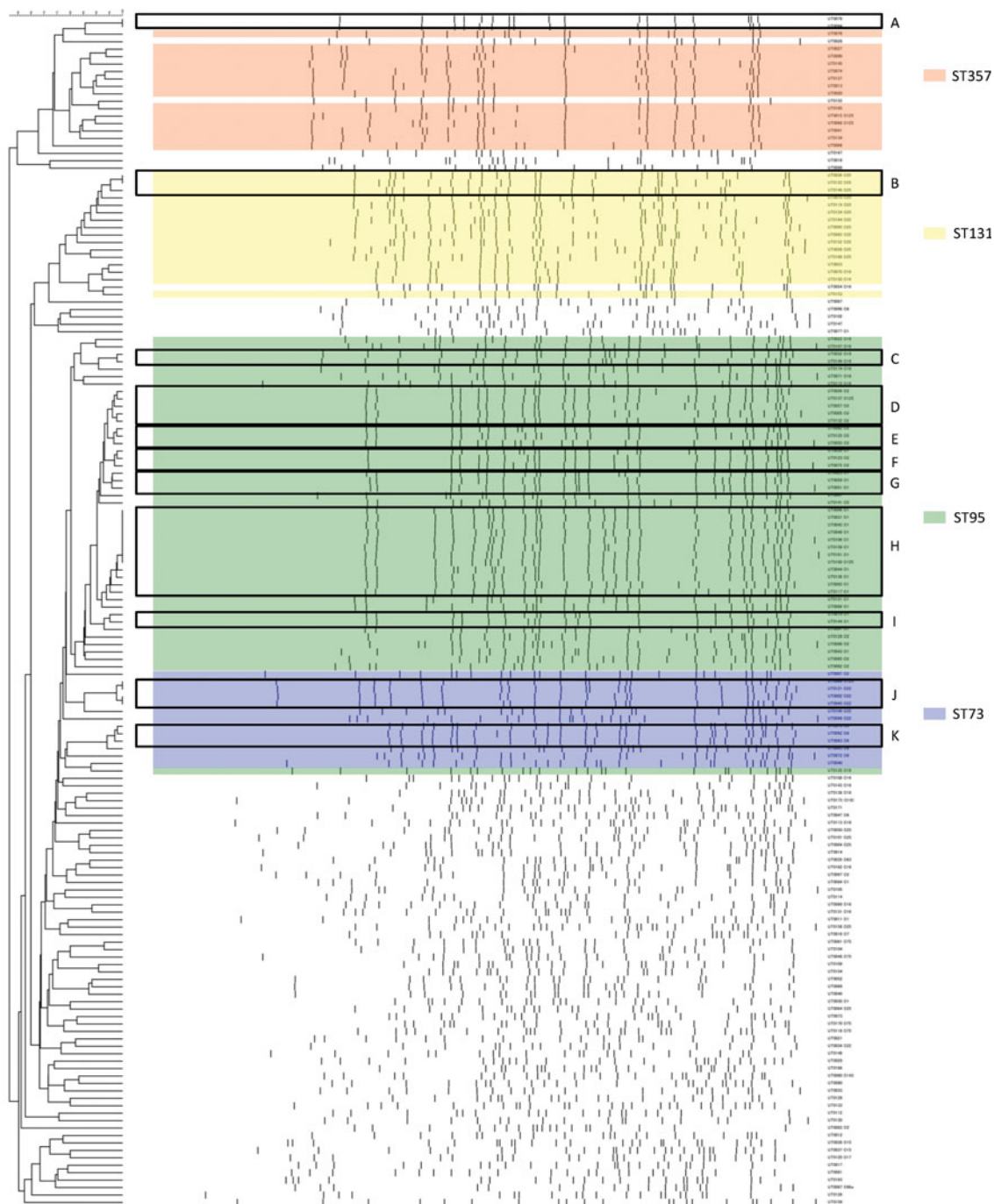


Fig. 3. XbaI PFGE dendrogram for 160 *Escherichia coli* isolates collected in Takikawa. Six strains had a smear-like appearance. These were OUT-A-ST10, O15D-ST69, OUT-D-ST69, O115-B1-ST156, OUT-D-ST714, OUT-B1-ST4038, described in the order of the O serogroup, phylotype and MLST sequence type. CRGs determined with $\geq 95\%$ similarity are indicated in boxes and the group names are shown in capital letters on the right side. High-isolation-frequency (HIF) STs are indicated in the colored area.

Of the 166 patients from whom *E. coli* was isolated, 122 resided in Takikawa and the remaining 44 visited from other municipalities. The ratio of the number of patients enrolled to 1000 females at each district of Takikawa varied widely from 0 to 13.9 with a median of 4.2. When we plotted the population and number of the cases enrolled for each district as shown in Figure 5(a) and (b), an approximately linear relationship was observed. However, six districts had 75% or greater ratio of enrollment. Therefore, we schematically mapped the distributions of the

residences of the patients classified by STs and CRGs (Fig. 5(c) and (d)). Overt geographical clustering of a particular ST, or CRG was not identified, even in the six high-enrollment-ratio districts.

Bacteriological properties and case characteristics

To simplify comparisons, we combined the MIF and SIF STs into non-HIF ST ($n = 66$). There were differences of antibacterial

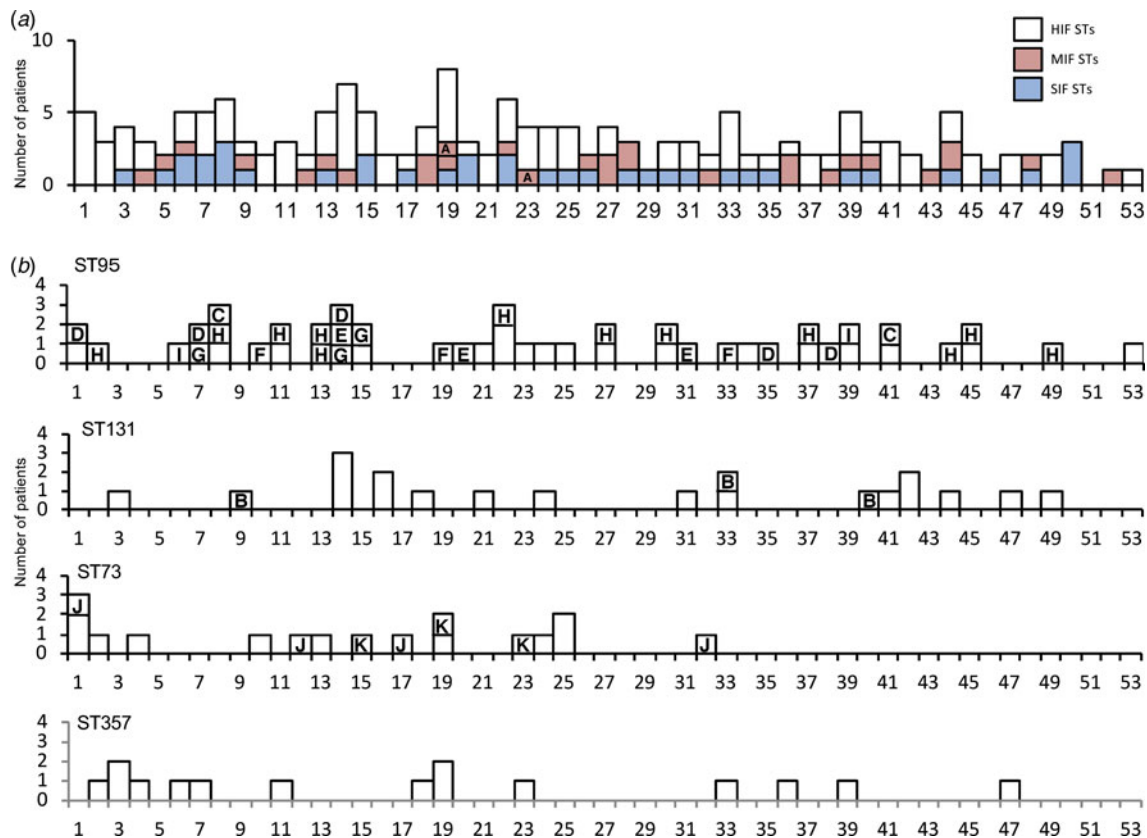


Fig. 4. Temporal patterns of cases of acute bacterial cystitis with categories of STs and closely related groups of *E. coli* by week in Takikawa, Japan, April 2011–March 2012. HIF indicates high-isolation-frequency; MIF, middle-isolation-frequency; SIF, single-isolation-frequency; CRG, closely related group. The temporal patterns were classified by HIF, MIF, or SIF STs in Part A. The patterns of four HIF STs are shown separately in Part B. CRGs are identified by letters in columns. CRG H was isolated from the 2nd to 48th week with maximum of 8-week intervals and the interval of the 1st and 2nd isolates of CRG B was 23 weeks.

resistance rates among five ST groups, non-HIF ST, ST95, ST131, ST73 and ST357. The rates of antibacterial resistance of ST95 and ST73 were lower than the sum of the other ST groups (Table 1). The isolates of ST131 had higher resistance rates against the tested antibacterial agents than the sum of the other STs (Table 1). In addition, age distributions were different among the ST groups. Importantly, the patients with ST95 were younger than those with non-HIF ST, ST73 and ST357 (Table 1). Patients with non-HIF STs had a peak age in the 70s, but for HIF STs, especially ST95, the peak was found in a younger population in their 50s and 60s (Fig. 1).

Discussion

In this study, we identified 11 genetically closely related groups whose members accounted for 25% (42/166) of the UPEC strains responsible for community-acquired acute UTIs. In the previous reports, a Dice coefficients similarity threshold of 94% was used to resolve unique PFGE types for establishing the evidence of within-household [6] and community transmissions [19]. A consensus on the appropriate cutoff level of similarity to discriminate unique clones in community-acquired infectious diseases by UPEC was not available. However, in this study, CRGs were determined stringently with a similarity index cutoff level of 95%. Thus, the degree of relatedness among each group's constituents appeared sufficiently high to indicate that these CRGs could be considered to represent distinct clones. Although the presence

of the genetically similar groups of community-isolated UPEC has been reported [10, 20–22], we believe that the presented PFGE match, shown as CRGs, should be considered as evidence for transmission of UPECs in the community.

We utilised MLST for phylogenetic analysis of the population structure because PFGE is more discriminating than MLST, with which phylogenetic relationships could be overlooked. Approximately 60% of the UPEC isolates were assigned to only four STs (ST95, ST131, ST73, ST357), whereas a total of 53 STs were identified and three most common STs have been recognised as pandemic lineages [23]. The predominance of pandemic lineages is consistent with previous studies [20–22, 24, 25]. However, the most frequently isolated STs were variable (e.g., ST10, 15, 69, 73, 95, 117, 127, 131) suggesting that selection of adaptive lineages could be influenced by regional or local factors. On the other hand, the diversity patterns observed in these studies were similar; relatively few STs were abundant and most STs were rare. To analyse the diversity of UPEC strains, we calculated the relative-sequence-type abundance, a concept that is utilised commonly to describe biodiversity [26]. The relative abundance of STs graphed as a rank-abundance diagram in Figure 2 Part A showed a hollow curve, a universal pattern that is usually observed in species abundance in a variety of ecological communities [26]. We speculate that there is a common mechanism, likely selection pressures including antimicrobial usage and other factors, to determine dominant species and STs. The UPEC isolates were composed of at least two distinct subpopulations. The two

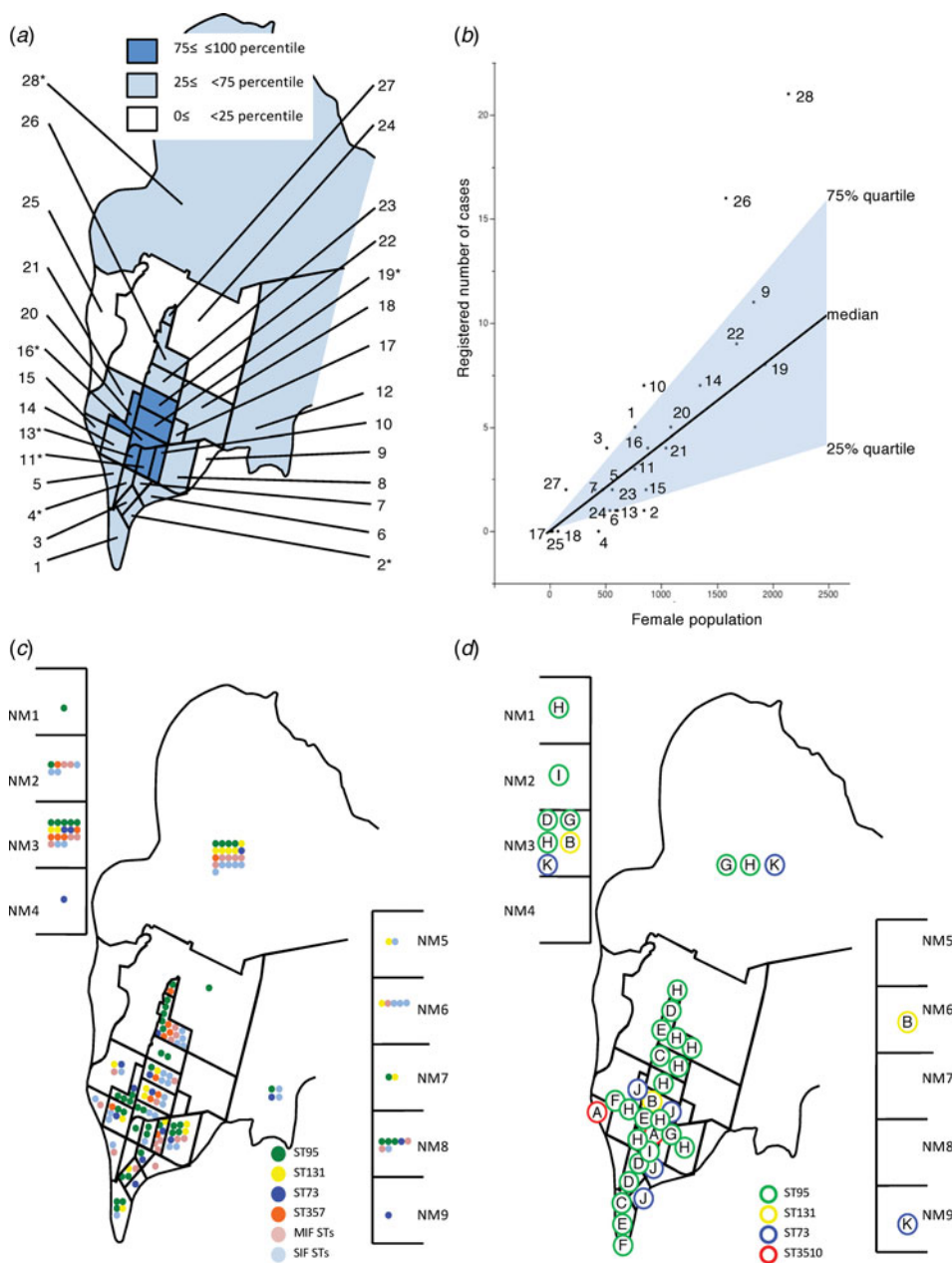


Fig. 5. Schematic maps of the City of Takikawa by districts and neighbouring municipalities April 2011–March 2012. (a): Districts classified by population density expressed as the quartiles. (b): Relationship between the registered number of cases and female population of each district. District identification numbers are in accordance with those of Part A. NM denotes neighbouring municipalities. *, The districts where the participated clinics or hospitals are located. Part C: Distributions of STs, classified into four (ST95, ST131, ST73, ST357) high-isolation-frequency, middle-isolation-frequency (MIF) or single-isolation-frequency (SIF) STs. Part D: Distributions of CRGs, which are identified by letters in circles. NM denotes neighbouring municipalities. Members of CRG H were isolated from 11 different districts or neighbouring cities, whereas only one district had only two isolates with an 11-month interval.

phylogenetic clades of UPEC were different from each other in terms of isolation frequency and phylotype. Although this dichotomous population structure is consistent with a previous report [21], the correlation between the phylotype and isolation frequency is not always evident. ST10 and ST69, assigned to phylotype A and D respectively, were reported as some of the most frequently isolated STs elsewhere [20–22]. Ways to identify the regional factors selecting for specific STs that become common within a community are sorely needed.

UPEC strains can be transmitted via water, food [25], or through person-to-person contact [5, 27, 28]. However, the water supply in Takikawa is monitored strictly according to the Drinking Water Quality Standards of Japan, which includes ‘*E. coli*, not to be detected.’ Although previous studies [29, 30] reinforced within-household transmission, the absence of geographical case concentration suggested that acute UTIs less frequently

occurred in women living together with the patients than expected. This can be explained partly by the growing trend toward living in nuclear families (i.e., small family size) and by a feature of the pathogenesis of acute UTIs. UPEC can colonise the lower intestinal tract innocuously for a prolonged period [28] and the development of acute UTIs commonly necessitates a risk factor [1, 31–33]. This unique, two-stage mechanism of onset of UTIs can hamper the shaping of an epidemic curve such as that typically seen in an outbreak if it exists. Nevertheless, the absence of overt geo-temporal clustering and the presence of more than one CRG indicate that the dissemination can hardly be explained by a simple point source outbreak. We hypothesise that the transmission of non-HIF STs, especially SIF STs, was limited to within households. This may explain why most of the STs were rare and diverse. Person to person transmissions in communities, especially if accumulated or intertwined

with human and non-human reservoirs, may play a key role in the dissemination of non-HIF (MIF) STs. On the other hand, the contact mode of transmission alone cannot explain the global distribution of the pandemic lineages of UPEC. Since a food reservoir, such as poultry [34], was reported to be responsible for the dissemination of extraintestinal pathogenic *E. coli* [35] elsewhere, circulation of contaminated retail meat products is a promising factor in this area. However, data to corroborate the involvement of food contamination are not available in this study. Recognizing that a substantial fraction of community-acquired acute UTIs – as the most common bacterial infections – is caused by the pandemic lineages of UPEC appears to be an important public health issue. This may imply that the pandemic lineages of UPEC contribute to the high incidence of acute UTIs.


To date, no single factor has been identified to be essential for the widespread dissemination of UPEC lineages [23]. Antimicrobial resistance is one of the favorable attributes for bacterial success in a community [36], as, for example, ST131 [22]; however, there was no significant difference in the antimicrobial-resistance rate between non-HIF STs and HIF STs. Moreover, ST95 and ST73, both HIF STs, had lower resistance rates than non-HIF STs, which indicates that antimicrobial resistance is not always required to become a common ST. This finding is consistent with previous reports [24, 30], in which ST95 was the most common genotype and the strains of ST95 were mostly susceptible to all tested drugs. The prevalence of drug-susceptible isolates of ST95, ST73 and ST357, which together accounted for 57% (74/129) of all susceptible isolates, appears to have lowered the overall rate of antimicrobial resistance (22.3%) of the UPEC isolates. We next compared the antimicrobial susceptibilities of UPEC isolates in this study with those in a previous Japanese nationwide surveillance [37] and found that the proportions of resistance against penicillins, cephalosporins, aminoglycosides and fluoroquinolones were similar to each other; therefore, we believe that the antimicrobial resistance rates in this study area are not significantly different from those in other areas of Japan. The patients harbouring UPEC ST95 were significantly younger than those carrying non-HIF UPEC STs. It is possible that there may be unknown biological or epidemiological factors linked to the isolates of ST95 for dissemination in younger patients. In contrast, the majority of UTIs occurred in the elderly in this study. This might be enhanced by the high numbers of elderly persons in Japan, but this may suggest that older age implies a greater risk of being colonised by UPEC in a community. Another study is warranted to identify the factors that facilitate clonal expansion of UPEC.

We acknowledge that our study was not a complete survey and possesses some limitations. The ratio of frequently isolated STs or CRGs might have been over- or underestimated due to unidentified sampling bias. It is also difficult to discriminate between local particulars and more general matters since the study area was limited. However, Takikawa and its surrounding areas are at least similar to other Japanese cities in terms of the population structure and public health status according to the official statistics (<http://www.stat.go.jp/english/index.htm>). The rationale for selecting 1000 CFU/ml for inclusion criteria is based on an established study [2] comparing voided urine and suprapubic bladder aspirate specimens in women having cystitis and on the diagnostic accuracy of the Diaslide device [12]. In this study, only 10 of 166 patients with *E. coli* present in their urine had bacterial densities of 1000 CFU/ml.

Conclusions

Our findings suggest that the genetically closely related groups of UPEC account for a significant percentage of UTIs independent of antimicrobial resistance. These strains are disseminated widely into a community and shared among its inhabitants via unidentified routes of transmissions. The UPEC isolates in this study were determined to be phylogenetically distinct and composed of at least two subpopulations. One included all HIF STs, mostly exhibiting phylotype B2 and the other was heterogeneous, consisting mainly of SIF STs, assigned to phylotypes other than B2. However, our work did not reveal distinguishable clustering in the geo-temporal isolation pattern of CRGs or STs, which suggests complicated mechanisms of the transmissions rather than a point-source outbreak. Further epidemiological and molecular biology studies are needed to elucidate the routes of transmission and the factors that determine isolation frequencies in communities.

Supplementary material. The supplementary material for this article can be found at <https://doi.org/10.1017/S0950268819000426>

Author ORCIDs.  M. Matsukawa, 0000-0002-3637-8385.

Acknowledgements. We thank the patients for participating in this study, Takashi Abe for his dedicated technical support, Kim Barrymore for careful proofreading the manuscript, and Drs Yuji Ishida, Atsunori Iso, Manabu Bunya, Tsunenori Nishimura, Akiharu Dohchin, Kunihiko Takeda, Kunio Yoshida, Hiroshi Kambe and Shinichi Ozawa for patient enrollment. This work was supported partly by the National Institute of Allergy and Infectious Diseases of the National Institutes of Health under award numbers R01 AI100560 and R01 AI063517 (R. A. B.) and by funds and/or facilities provided by the Cleveland Department of Veterans Affairs, the Veterans Affairs Merit Review Program and the Geriatric Research Education and Clinical Center VISN 10 (R. A. B.). The contents of this work are solely the responsibility of the authors and do not necessarily represent the official views of the funding agencies. The funders of the study had no role in the study design, data collection, data analysis, data interpretation, or writing the report. The corresponding author, at all times, had full access to all the data in the study and had full responsibility for the decision to submit for publication.

Conflict of interest. None.

References

1. Foxman B and Brown P (2003) Epidemiology of urinary tract infections: transmission and risk factors, incidence, and costs. *Infectious Disease Clinics of North America* **17**, 227–241.
2. Stamm WE *et al.* (1989) Urinary tract infections: from pathogenesis to treatment. *The Journal of Infectious Diseases* **159**, 400–406.
3. Yamamoto S *et al.* (1997) Genetic evidence supporting the fecal-perineal-urethral hypothesis in cystitis caused by *Escherichia coli*. *The Journal of Urology* **157**, 1127–1129.
4. Lau SH *et al.* (2008) Major uropathogenic *Escherichia coli* strain isolated in the northwest of England identified by multilocus sequence typing. *Journal of Clinical Microbiology* **46**, 1076–1080.
5. Ulleryd P *et al.* (2015) Colonization with *Escherichia coli* strains among female sex partners of men with febrile urinary tract infection. *Journal of Clinical Microbiology* **53**, 1947–1950.
6. Johnson JR and Clabots C (2006) Sharing of virulent *Escherichia coli* clones among household members of a woman with acute cystitis. *Clinical Infectious Diseases* **43**, e101–e108.
7. O'Neill PM *et al.* (1990) The rise and fall of *Escherichia coli* O15 in a London teaching hospital. *Journal of Medical Microbiology* **33**, 23–27.
8. Giesecke J (2002) Descriptive epidemiology. In *Modern Infectious Disease Epidemiology*. 2nd edn. Boca Rayton, FL: CRC Press, pp. 21–26.

9. **Phillips I et al.** (1988) Epidemic multiresistant *Escherichia coli* infection in West Lambeth Health District. *The Lancet* **1**, 1038–1041.
10. **Manges AR et al.** (2001) Widespread distribution of urinary tract infections caused by a multidrug-resistant *Escherichia coli* clonal group. *The New England Journal of Medicine* **345**, 1007–1013.
11. **Field N et al.** (2014) Strengthening the reporting of molecular epidemiology for infectious diseases (STROME-ID): an extension of the STROBE statement. *The Lancet Infectious Diseases* **14**, 341–352.
12. **Rosenberg M et al.** (1992) Initial testing of a novel urine culture device. *Journal of Clinical Microbiology* **30**, 2686–2691.
13. **M. Grabe TEB-J H.** (2010) **Guidelines on urological infections.** In: w.
14. **Cinical and Laboratory Standards Insitute** (2010) Performance standards for antimicrobial susceptibility testing. In *Twentieth Informational Supplement. CLSI document M100-S20*. Wayne, PA, USA: CLSI.
15. **Clermont O, Bonacorsi S and Bingen E** (2000) Rapid and simple determination of the *Escherichia coli* phylogenetic group. *Applied and Environmental Microbiology* **66**, 4555–4558.
16. **Wirth T et al.** (2006) Sex and virulence in *Escherichia coli*: an evolutionary perspective. *Molecular Microbiology* **60**, 1136–1151.
17. **Tamura K et al.** (2011) MEGA5: molecular evolutionary genetics analysis using maximum likelihood, evolutionary distance, and maximum parsimony methods. *Molecular Biology and Evolution* **28**, 2731–2739.
18. **Pei Y et al.** (2008) Molecular characterization of enterohemorrhagic *Escherichia coli* O157:H7 isolates dispersed across Japan by pulsed-field gel electrophoresis and multiple-locus variable-number tandem repeat analysis. *Japanese Journal of Infectious Diseases* **61**, 58–64.
19. **Owens Jr. RC, et al.** (2011) Community transmission in the United States of a CTX-M-15-producing sequence type ST131 *Escherichia coli* strain resulting in death. *Journal of Clinical Microbiology* **49**, 3406–3408.
20. **Manges AR et al.** (2008) Endemic and epidemic lineages of *Escherichia coli* that cause urinary tract infections. *Emerging Infectious Diseases* **14**, 1575–1583.
21. **Gibreel TM et al.** (2012) Population structure, virulence potential and antibiotic susceptibility of uropathogenic *Escherichia coli* from Northwest England. *The Journal of Antimicrobial Chemotherapy* **67**, 346–356.
22. **Blanco J et al.** (2011) National survey of *Escherichia coli* causing extraintestinal infections reveals the spread of drug-resistant clonal groups O25b:H4-B2-ST131, O15:H1-D-ST393 and CGA-D-ST69 with high virulence gene content in Spain. *The Journal of Antimicrobial Chemotherapy* **66**, 2011–2021.
23. **Riley LW** (2014) Pandemic lineages of extraintestinal pathogenic *Escherichia coli*. *Clinical Microbiology and Infection* **20**, 380–390.
24. **Yamaji R et al.** (2018) Persistent pandemic lineages of uropathogenic *Escherichia coli* in a college community from 1999 to 2017. *Journal of Clinical Microbiology* **56**, e01834–17.
25. **Vincent C et al.** (2010) Food reservoir for *Escherichia coli* causing urinary tract infections. *Emerging Infectious Diseases* **16**, 88–95.
26. **McGill BJ et al.** (2007) Species abundance distributions: moving beyond single prediction theories to integration within an ecological framework. *Ecology Letters* **10**, 995–1015.
27. **Freeman JT et al.** (2008) Community-onset genitourinary tract infection due to CTX-M-15-producing *Escherichia coli* among travelers to the Indian subcontinent in New Zealand. *Clinical Infectious Diseases* **47**, 689–692.
28. **Reeves PR et al.** (2011) Rates of mutation and host transmission for an *Escherichia coli* clone over 3 years. *PLoS One* **6**, e26907.
29. **Johnson JR et al.** (2008) *Escherichia coli* colonization patterns among human household members and pets, with attention to acute urinary tract infection. *The Journal of Infectious Diseases* **197**, 218–224.
30. **Umene YD et al.** (2015) Molecular epidemiological characterization of uropathogenic *Escherichia coli* from an outpatient urology clinic in rural Japan. *Journal of Clinical Microbiology* **53**, 681–683.
31. **Foxman B** (2010) The epidemiology of urinary tract infection. *Nature Reviews Urology* **7**, 653–660.
32. **Jackson SL et al.** (2004) Predictors of urinary tract infection after menopause: a prospective study. *The American Journal of Medicine* **117**, 903–911.
33. **Hooton TM** (2012) Clinical practice. Uncomplicated urinary tract infection. *The New England Journal of Medicine* **366**, 1028–1037.
34. **Bergeron CR et al.** (2012) Chicken as reservoir for extraintestinal pathogenic *Escherichia coli* in humans, Canada. *Emerging Infectious Diseases* **18**, 415–421.
35. **Manges AR and Johnson JR** (2012) Food-borne origins of *Escherichia coli* causing extraintestinal infections. *Clinical Infectious Diseases* **55**, 712–719.
36. **Gupta K et al.** (2001) Antimicrobial resistance among uropathogens that cause community-acquired urinary tract infections in women: a nationwide analysis. *Clinical Infectious Diseases* **33**, 89–94.
37. **Hayami H et al.** (2013) Nationwide surveillance of bacterial pathogens from patients with acute uncomplicated cystitis conducted by the Japanese surveillance committee during 2009 and 2010: antimicrobial susceptibility of *Escherichia coli* and *Staphylococcus saprophyticus*. *Journal of Infection and Chemotherapy* **19**, 393–403.