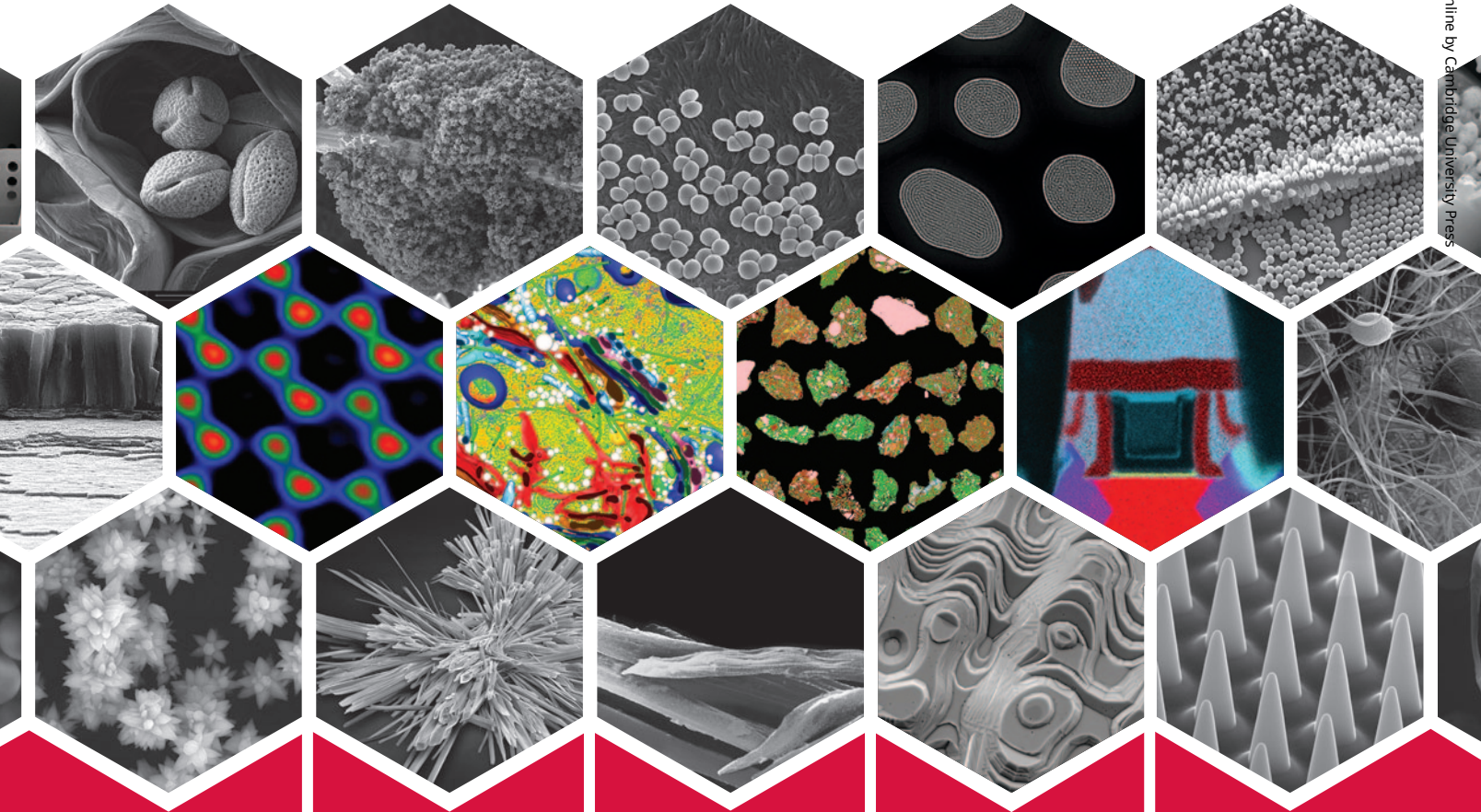




Explore new materials.
Discover advancements.
Resolve to solution.



Research

Life Sciences

Natural
Resources

Electronics

FEI is dedicated to providing you with the most innovative instrument solutions for materials research, life sciences, natural resources, and electronics. Explore the broadest portfolio of imaging and analytical instruments and application software, designed, produced and supported to enable discovery and resolution of your most significant challenges.

Atomic resolution phase image of graphene Sample courtesy of N. Alem and A. Zettl, University of California, Berkeley. **Image slice from a high-resolution (~5nm) tomogram of the Golgi region in a pancreatic islet cell** Sample courtesy of N. Alem and A. Zettl, University of California, Berkeley. **600 x 600 pixel maps, fully quantified, of a 45 nm PMOS transistor structure** Courtesy of D. Klenov, FEI NanoPort, The Netherlands. **Drill cuttings from a CO2 injection well** Courtesy CO2CRC, Australia



FEI™ Explore. Discover. Resolve.

Unrivaled EDS for TEM

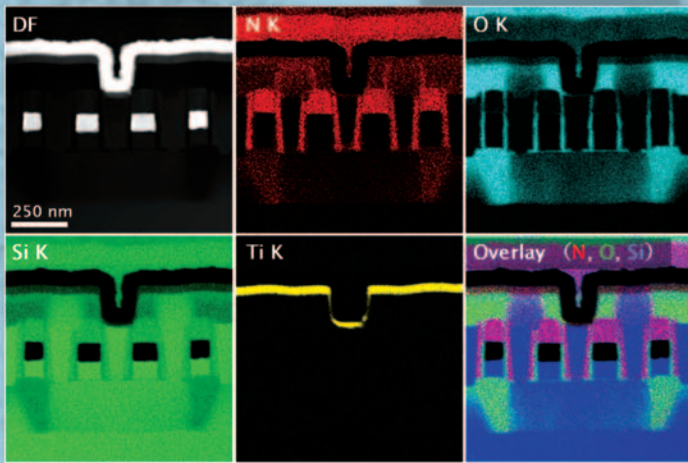
0.98sr 100mm²

- Exponentially enhances elemental mapping for nano-area analysis TEM
- Automatic retractable design



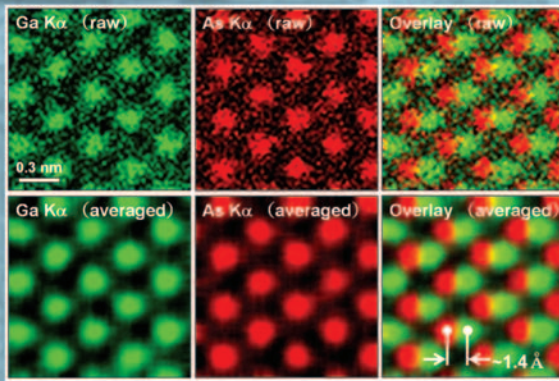
CENTURIO
Large Solid Angle SDD for TEM

NANOANALYSIS S/TEM



*High sensitivity
for fast mapping
at atomic resolution*

*Seamless chemical mapping and
data collection for S/TEM-TEM-
SEM-EDS. (256 x 256 pixels.
Total acquisition time: 1 min. 13 sec.)*



*View our real-time
DRAM analysis video
at www.jeolusa.com/UnrivaledEDS*

JEM-2800



JEM-ARM200F



JEOL

Another
Extreme Imaging
Solution

Global Solutions Provider for Advanced Technology
www.jeolusa.com • salesinfo@jeol.com
978-535-5900
Find us on Facebook and Twitter @jeolusa