

## Original Article

**Cite this article:** Palhano-Fontes F *et al* (2019). Rapid antidepressant effects of the psychedelic ayahuasca in treatment-resistant depression: a randomized placebo-controlled trial. *Psychological Medicine* **49**, 655–663. <https://doi.org/10.1017/S0033291718001356>

Received: 13 February 2018

Revised: 16 April 2018

Accepted: 24 April 2018

**Key words:**

Ayahuasca; depression; HRS; MEQ; psychedelics; randomized controlled trial (RCT)

**Author for correspondence:**

Dráulio B Araújo, E-mail: [draulio@neuro.ufrn.br](mailto:draulio@neuro.ufrn.br)

# Rapid antidepressant effects of the psychedelic ayahuasca in treatment-resistant depression: a randomized placebo-controlled trial

Fernanda Palhano-Fontes<sup>1,2</sup>, Dayanna Barreto<sup>2,3</sup>, Heloisa Onias<sup>1,2</sup>, Katia C. Andrade<sup>1,2</sup>, Morgana M. Novaes<sup>1,2</sup>, Jessica A. Pessoa<sup>1,2</sup>, Sergio A. Mota-Rolim<sup>1,2</sup>, Flávia L. Osório<sup>4,5</sup>, Rafael Sanches<sup>4,5</sup>, Rafael G. dos Santos<sup>4,5</sup>, Luís Fernando Tófoli<sup>6</sup>, Gabriela de Oliveira Silveira<sup>7</sup>, Mauricio Yonamine<sup>7</sup>, Jordi Riba<sup>8</sup>, Francisco R. Santos<sup>9</sup>, Antonio A. Silva-Junior<sup>9</sup>, João C. Alchieri<sup>10</sup>, Nicole L. Galvão-Coelho<sup>5,11</sup>, Bruno Lobão-Soares<sup>5,12</sup>, Jaime E. C. Hallak<sup>4,5</sup>, Emerson Arcoverde<sup>2,3,5</sup>, João P. Maia-de-Oliveira<sup>2,3,5</sup> and Dráulio B. Araújo<sup>1,2</sup>

<sup>1</sup>Brain Institute, Federal University of Rio Grande do Norte (UFRN), Natal/RN, Brazil; <sup>2</sup>Onofre Lopes University Hospital, UFRN, Natal/RN, Brazil; <sup>3</sup>Department of Clinical Medicine, UFRN, Natal/RN, Brazil; <sup>4</sup>Department of Neurosciences and Behaviour, University of São Paulo (USP), Ribeirão Preto/SP, Brazil; <sup>5</sup>National Institute of Science and Technology in Translational Medicine (INCT-TM), Ribeirão Preto/SP, Brazil; <sup>6</sup>Department of Medical Psychology and Psychiatry, University of Campinas, Campinas/SP, Brazil; <sup>7</sup>Department of Clinical Analysis and Toxicology, USP, São Paulo/SP, Brazil; <sup>8</sup>Sant Pau Institute of Biomedical Research, Barcelona, Spain; <sup>9</sup>Department of Pharmacy, UFRN, Natal/RN, – Brazil; <sup>10</sup>Department of Psychology, UFRN, Natal/RN, Brazil; <sup>11</sup>Department of Physiology, UFRN, Natal/RN, Brazil and <sup>12</sup>Department of Biophysics and Pharmacology, UFRN, Natal/RN, Brazil

**Abstract**

**Background.** Recent open-label trials show that psychedelics, such as ayahuasca, hold promise as fast-onset antidepressants in treatment-resistant depression.

**Methods.** To test the antidepressant effects of ayahuasca, we conducted a parallel-arm, double-blind randomized placebo-controlled trial in 29 patients with treatment-resistant depression. Patients received a single dose of either ayahuasca or placebo. We assessed changes in depression severity with the Montgomery-Åsberg Depression Rating Scale (MADRS) and the Hamilton Depression Rating scale at baseline, and at 1 (D1), 2 (D2), and 7 (D7) days after dosing.

**Results.** We observed significant antidepressant effects of ayahuasca when compared with placebo at all-time points. MADRS scores were significantly lower in the ayahuasca group compared with placebo at D1 and D2 ( $p = 0.04$ ), and at D7 ( $p < 0.0001$ ). Between-group effect sizes increased from D1 to D7 (D1: Cohen's  $d = 0.84$ ; D2: Cohen's  $d = 0.84$ ; D7: Cohen's  $d = 1.49$ ). Response rates were high for both groups at D1 and D2, and significantly higher in the ayahuasca group at D7 (64% *v.* 27%;  $p = 0.04$ ). Remission rate showed a trend toward significance at D7 (36% *v.* 7%,  $p = 0.054$ ).

**Conclusions.** To our knowledge, this is the first controlled trial to test a psychedelic substance in treatment-resistant depression. Overall, this study brings new evidence supporting the safety and therapeutic value of ayahuasca, dosed within an appropriate setting, to help treat depression. This study is registered at <http://clinicaltrials.gov> (NCT02914769).

**Introduction**

The World Health Organization estimates that more than 300 million people suffer from depression (World Health Organization, 2017), and about one-third do not respond to appropriate courses of at least three different antidepressants (Conway *et al.*, 2017). Most currently available antidepressants have a similar efficacy profile and mechanisms of action, based on the modulation of brain monoamines, and usually, take about 2 weeks to start being effective (Cai *et al.*, 2015; Conway *et al.*, 2017; Otte *et al.*, 2016).

Recent evidence, however, shows a rapid and significant antidepressant effect of ketamine, an N-methyl-D-aspartate (NMDA) antagonist frequently used in anesthesia. In recent randomized placebo-controlled trials with ketamine in treatment-resistant depression, the antidepressant effects peaked 1 day after dosing and remained significant for about 7 days (Berman *et al.*, 2000; Zarate *et al.*, 2006; Murrrough *et al.*, 2013; Lapidus *et al.*, 2014).

Additionally, research with serotonergic psychedelics has gained momentum (Vollenweider and Komater, 2010). A few centers around the world are currently exploring how these

© Cambridge University Press 2018. This is an Open Access article, distributed under the terms of the Creative Commons Attribution licence (<http://creativecommons.org/licenses/by/4.0/>), which permits unrestricted re-use, distribution, and reproduction in any medium, provided the original work is properly cited.

substances affect the brain, and also probing their potential in treating different psychiatric conditions, including mood disorders (Grob *et al.*, 2011; Osório *et al.*, 2015; Carhart-Harris *et al.*, 2016; Griffiths *et al.*, 2016; Ross *et al.*, 2016; Sanches *et al.*, 2016). For instance, recent open-label trials show that psychedelics, such as ayahuasca and psilocybin, hold promise as fast-onset antidepressants in treatment-resistant patients (Osório *et al.*, 2015; Carhart-Harris *et al.*, 2016; Sanches *et al.*, 2016).

Ayahuasca is a brew traditionally used for healing and spiritual purposes by indigenous populations of the Amazon Basin (Luna, 2011; Spruce and Wallace, 1908). In the 1930s, it began to be used in religious settings of Brazilian small urban centers, reaching large cities in the 1980s and expanding since then to several other parts of the world (Labate and Jungaberle, 2011). In Brazil, ayahuasca has a legal status for ritual use since 1987. Ayahuasca is most often prepared by decoction of two plants (McKenna *et al.*, 1984): *Psychotria viridis* that contains the psychedelic N, N-dimethyltryptamine (N,N-DMT), a serotonin and sigma-1 receptors agonist (Carbonaro and Gatch, 2016), and *Banisteriopsis caapi*, rich in reversible monoamine oxidase inhibitors (MAOI) such as harmine, harmaline, and tetrahydroharmine (Riba *et al.*, 2003).

The acute psychological effects of ayahuasca last around 4 h and include intense perceptual, cognitive, emotional, and affective changes (Shanon, 2002; Riba *et al.*, 2003; Frecska *et al.*, 2016). Although nausea, vomiting, and diarrhea are often reported, mounting evidence points to a positive safety profile of ayahuasca. For instance, ayahuasca is not addictive and has not been associated with psychopathological, personality, or cognitive deterioration, and it promotes only moderate sympathomimetic effects (Grob *et al.*, 1996; Callaway *et al.*, 1999; Dos Santos *et al.*, 2011; Bouso *et al.*, 2012; Barbosa *et al.*, 2016).

In a recent open-label trial, 17 patients with major depressive disorder attended a single dosing session with ayahuasca. Depression severity was assessed before, during and after dosing, using the Hamilton Depression Rating scale (HAM-D) and the Montgomery-Åsberg Depression Rating Scale (MADRS) (Sanches *et al.*, 2016). Significant reduction in depression severity was found already in the first hours after dosing, an effect that remained significant for 21 days (Osório *et al.*, 2015; Sanches *et al.*, 2016).

Although promising, these studies have not controlled for the placebo effect, which can be remarkably high in clinical trials for depression, reaching 30–40% of the patients (Sonawalla and Rosenbaum, 2002). To address this issue, and to further test the antidepressant effects of ayahuasca, we conducted a randomized placebo-controlled trial in patients with treatment-resistant depression. Additionally, we explored for correlations between the antidepressant and the acute effects of ayahuasca.

## Materials and methods

### Study design and participants

This study is a double-blind parallel-arm randomized placebo-controlled trial. Patients were recruited from psychiatrist referrals at local outpatient psychiatric units or through media advertisements. All procedures took place at the Onofre Lopes University Hospital (HUOL), Natal-RN, Brazil. The University Hospital Research Ethics Committee approved the study (# 579.479), and all subjects provided written informed consent

before participation. This study is registered at <http://clinicaltrials.gov> (NCT02914769).

We recruited adults aged 18–60 years who met criteria for the unipolar major depressive disorder as diagnosed by the Structured Clinical Interview for Axis I (DSM-IV). Only treatment-resistant patients were selected, defined herein as those with inadequate responses to at least two antidepressant medications from different classes (Conway *et al.*, 2017). Selected patients were in a current moderate-to-severe depressive episode at screening (HAM-D $\geq$ 17). Patients were submitted to a full clinical evaluation by a trained psychiatrist that included anamneses, mental health evaluation, and screening for either personal or family history of mania or bipolar disorder. We adopted the following exclusion criteria: previous experience with ayahuasca, current medical disease based on history, pregnancy, current or previous history of neurological disorders, personal or family history of schizophrenia or bipolar affective disorder, personal or family history of mania or hypomania, use of substances of abuse, and suicidal risk.

### Randomization and masking

Patients were randomly assigned (1:1) to receive ayahuasca or placebo using permuted blocks of size 10. All investigators and patients were blind to intervention assignment, which was kept only in the database and with the pharmacy administrators. Masking was further achieved by ensuring that all patients were naïve to ayahuasca, and by randomly assigning, for each patient, different psychiatrists for the dosing session and for the follow-up assessments. Psychiatrists' blindness was not assessed.

### Procedures

We used the MADRS and the HAM-D (Carneiro *et al.*, 2015) to assess depression severity. MADRS assessments were at baseline (one day before dosing), and at 1 (D1), 2 (D2), and 7 (D7) days after dosing. HAM-D was applied only at baseline and D7, as it was designed to assess depression symptoms present in the last week (Hamilton, 1960).

The liquid used as placebo was designed to simulate organoleptic properties (taste and color) of ayahuasca, such as a bitter and sour taste, and a brownish color. It contained water, yeast, citric acid, zinc sulfate and caramel colorant. The presence of zinc sulfate also produced low to modest gastrointestinal distress. A single ayahuasca batch was used throughout the study, which was prepared and provided free of charge by a branch of the Barquinha church based at Ji-Paraná-RO, Brazil.

To assess alkaloids concentrations and stability of the batch, samples of ayahuasca were quantified at two different time points by mass spectroscopy analysis. On average, the ayahuasca used contained (mean  $\pm$  S.D.): 0.36  $\pm$  0.01 mg/ml of N, N-DMT, 1.86  $\pm$  0.11 mg/ml of harmine, 0.24  $\pm$  0.03 mg/ml of harmaline, and 1.20  $\pm$  0.05 mg/ml of tetrahydroharmine (online Supplementary Table S1).

After screening, patients underwent a washout period of 2 weeks on average and adjusted to the half-life time of the antidepressant medication in use. During dosing session, patients were not under any antidepressant medication, and a new treatment scheme was introduced only 7 days after dosing. If needed, benzodiazepines were allowed as a supporting hypnotic and/or

anxiolytic agents (online Supplementary Table S2 for demographic and clinical characteristics).

Dosing sessions lasted approximately 8 h, from 8:00 a.m. to 4:00 p.m., and intake usually occurred at 10:00 a.m. After a light breakfast, patients were reminded about the effects they could experience, and strategies to help alleviating eventual difficulties. Patients were also told that they could receive ayahuasca and feel nothing, or placebo and feel something. Sessions took place in a quiet and comfortable living room-like environment, with a bed, a recliner, controlled temperature, natural, and dimmed light.

Patients received a single dose of 1 ml/kg of placebo or ayahuasca adjusted to contain 0.36 mg/kg of N, N-DMT. They were asked to remain quiet, with their eyes closed, while focusing on their body, thoughts, and emotions. They were also allowed to listen to a predefined music playlist. Patients received support throughout the session from at least two investigators who remained in a room next door, offering assistance when needed. Acute effects were assessed with the Clinician-Administered Dissociative States Scale (CADSS) (Bremner *et al.*, 1998), the Brief Psychiatric Rating Scale (BPRS) (Crippa *et al.*, 2001), and the Young Mania Rating Scale (YMRS) (Vilela *et al.*, 2005), applied at -10 min, +1:40 h, +2:40 h, and +4:00 h after intake.

When the acute psychedelic effects ceased, patients had a last psychiatric evaluation, debriefed their experience, and responded to the Hallucinogenic Rating Scale (HRS) (Strassman *et al.*, 1994) and Mystical Experience Questionnaire (MEQ30) (MacLean *et al.*, 2012). Around 4:00 p.m. they could go home accompanied by a relative or friend. Only four patients presenting a more delicate condition remained as inpatients in the hospital ward for an entire week. Patients were asked to return for follow-up assessments at 1, 2, and 7 days after dosing.

### Outcomes

The primary outcome measure was the change in depression severity assessed by the HAM-D scale, comparing baseline with seven days (D7) after dosing. The secondary outcome was the change in MADRS scores from baseline to 1 (D1), 2 (D2), and 7 (D7) days after dosing. We examined the proportion of patients meeting response criteria, defined as a reduction of 50% or more in baseline scores. Remission rates were also examined and were defined as HAM-D $\leq$ 7 or MADRS $\leq$ 10. We assessed response and remission rates using HAM-D (at D7) and MADRS (at D1, D2, and D7) scores. Safety and tolerability were assessed with the CADSS, the BPRS, and the YMRS applied during dosing session. We used the HRS and the MEQ30 to assess specific aspects of the psychedelic effects.

### Statistical analysis

Analyses adhered to a modified intent-to-treat principle, including all patients who completed assessments at baseline, dosing and D7. An estimated sample size of 42 patients was estimated in G\*Power software to provide 80% power to detect a five-point HAM-D difference (standardized effect size = 0.9) between baseline and D7 with two-sided 5% significance. The initial estimation was based on our previous open-label trial with ayahuasca in treatment-resistant depression (Sanchez *et al.*, 2016). A fixed-effects linear mixed model, with baseline scores as covariate, examined changes in HAM-D at D7, and MADRS at D1, D2, and

D7. A Toeplitz covariance structure was the best fit to the data according to Akaike's information criterion. Missing data were estimated using restricted maximum-likelihood estimation. Main effects and treatment *v.* time interaction were evaluated. *Post-hoc t* tests were performed for between-groups comparisons at all time points, and Sidak's test was used to control for multiple comparisons. Cohen's *d* effect sizes were obtained for between and within group comparisons. Between-group effect sizes were calculated using the estimated means of each group at each time point. For within-group comparisons, effect sizes of each treatment were calculated separately, using the differences between a time point and baseline values. Differences in the proportion of responders/non-responders and remitters/non-remitters were estimated using Fisher's exact test. Odds ratio (OR) and number needed to treat (NNT) were also calculated. Data from patients whose HAM-D or MADRS scores were reduced by 50% or more between washout onset and baseline, or that were in remission at dosing, were not considered for statistical analysis. Fisher's exact test was used to assess differences in the proportion of adverse events between the two treatments. We used the Mann-Whitney test to evaluate between-group differences in BPRS+, CADSS, HRS, and MEQ30. We calculated Pearson correlations between changes in MADRS scores from baseline to D7, and the acute effects during dosing assessed by BPRS, CADSS, MEQ30, and HRS. Multiple comparisons correction was based on the number of factors of each scale ( $N = 6$ , for the HRS;  $N = 5$ , for the MEQ30). Significance was set at  $p < 0.05$ , two-tailed. We used IBM SPSS Statistic 20 and Prism 7 to run the analyses.

### Results

From January 2014 to June 2016, we assessed 218 patients for eligibility, and 35 met criteria for the trial. Six subjects had to be excluded: five no longer met criteria for depression in the day of dosing, and one dropped out before dosing. Data from 29 patients were included in the analysis: 14 in the ayahuasca group and 15 in the placebo group. Figure 1 shows the trial profile.

On average, patients met criteria for moderate-to-severe depression (mean  $\pm$  s.d.): HAM-D = 21.83  $\pm$  5.35; MADRS =

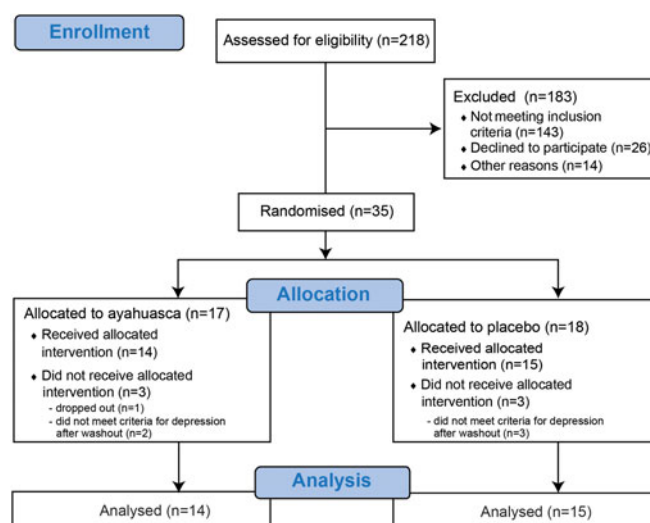


Fig. 1. Trial profile.

33.03 ± 6.49. They had been experiencing depressive symptoms for 11.03 ± 9.70 years and had tried 3.86 ± 1.66 different previous unsuccessful antidepressants. Two patients had a previous history of electroconvulsive therapy. Most patients (76%) had a comorbid personality disorder, and 31% had a comorbid anxiety disorder. All patients were under regular use of benzodiazepines during the trial (online Supplementary Table S2 for clinical and demographics).

Demographic and clinical characteristics are summarized in Table 1 (online Supplementary Table S2). All patients were Brazilian, most female (72%), adults (42.03 ± 11.66 yo) from low socioeconomic status backgrounds: low educated (41% with <8 years of formal education) and living in low household income (41% earn <2 minimum wages).

Figure 2 shows changes in HAM-D scores from baseline to 7 days after dosing. We observed a significant between-groups difference at D7 ( $F_1 = 6.31$ ;  $p = 0.019$ ), and patients treated with ayahuasca showed significantly reduced severity when compared with patients treated with placebo (online Supplementary Fig. S1 for individual HAM-D scores). Between-group effect size was large at D7 (Cohen's  $d = 0.98$ ; 95% CI 0.21–1.75). Within-group effect size (online Supplementary Table S3) was large for the ayahuasca group (Cohen's  $d = 2.22$ ; 95% CI 1.28–3.17), and medium for the placebo group (Cohen's  $d = 0.46$ ; 95% CI –0.27 to 1.18).

Figure 3 shows mean MADRS scores as a function of time. Linear mixed model showed a significant effect for time ( $F_{2,34.4} = 3.96$ ;  $p = 0.028$ ), treatment ( $F_{1,27.7} = 10.52$ ;  $p = 0.003$ ), but no treatment *v.* time interaction ( $F_{2,34.4} = 1.77$ ;  $p = 0.185$ ). We observed significant decreased depression severity already 1 day after dosing with ayahuasca compared with placebo ( $F_{1,49.7} = 4.58$ ;  $p = 0.04$ ). Depression severity persisted lower in the ayahuasca group at both D2 ( $F_{1,50.3} = 4.67$ ;  $p = 0.04$ ) and D7 ( $F_{1,47} = 14.81$ ;  $p < 0.0001$ ).

Between-groups effect size was large at D1 (Cohen's  $d = 0.84$ ; 95% CI 0.05–1.62) and D2 (Cohen's  $d = 0.84$ ; 95% CI 0.05–1.63) and largest at D7 (Cohen's  $d = 1.49$ ; 95% CI 0.67–2.32). Within-group effect sizes (online Supplementary Table S4) were large for the ayahuasca at all time points: Cohen's  $d = 2.78$  at D1 (95% CI 1.74–3.82),  $d = 3.05$  at D2 (95% CI 1.94–4.16), and  $d = 2.90$  at D7 (95% CI 1.84–3.97).

HAM-D response rate was significantly different between-groups at D7, with 57% of responders in the ayahuasca group against 20% in the placebo group [OR 5.33 (95% CI 1.11–22.58);  $p = 0.04$ ; NNT = 2.69]. HAM-D remission rate showed a trend toward significance at D7: 43% in ayahuasca *v.* 13% in placebo [OR 4.87 (95% CI 0.77–26.73);  $p = 0.07$ ; NNT = 3.39].

Figure 4a shows MADRS response rates as a function of time. At D1, response rates were high for both groups: 50% in the ayahuasca group, and 46% in the placebo group [OR 1.17 (95% CI 0.26–5.48);  $p = 0.87$ ; NNT = 26]. At D2, they remained high in both groups: 77% in the ayahuasca group and 64% in the placebo [OR 1.85 (95% CI 0.29–8.40);  $p = 0.43$ ; NNT = 7.91]. Response rate was statistically different at D7: 64% of responders in the ayahuasca group, and 27% in the placebo [OR 4.95 (95% CI 1.11–21.02);  $p = 0.04$ ; NNT = 2.66]. Figure 4b shows the MADRS remission rates as a function of time. At D1, the remission rate was of 42% in the ayahuasca group and 46% in the placebo group ( $p = 0.86$ ), at D2, 31% in the ayahuasca group and 50% in the placebo group ( $p = 0.31$ ). At D7 MADRS remission rate showed a trend toward significance: 36% of remitters in the ayahuasca group and 7% in the placebo [OR 7.78 (95% CI 0.81–77.48);  $p = 0.054$ ; NNT = 3.44].

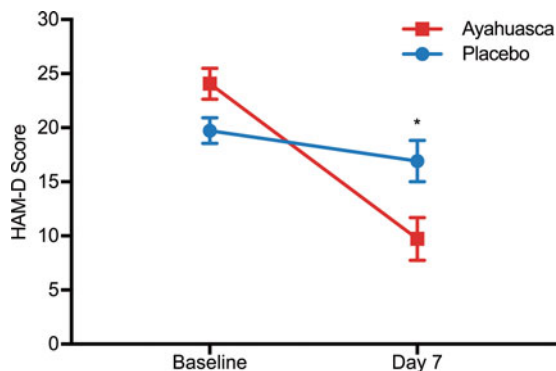
**Table 1.** Sociodemographic & clinical characteristics

	Ayahuasca	Placebo
Participants, <i>n</i>	14	15
Age (years)	39.71 ± 11.26	44.2 ± 11.98
Gender (M/F)	3/11	5/10
Unemployed (%)	7/14 (50)	8/15 (53)
Household income		
<2 minimum wages (%)	6/14 (43)	6/15 (40)
2–5 wages (%)	4/14 (28)	7/15 (47)
6–10 wages (%)	1/14 (7)	1/15 (6.6)
11 or more wages (%)	3/14 (21)	1/15 (6.6)
Education		
Up to 8 years, <i>n</i> (%)	6/14 (43)	6/15 (40)
9–11 years, <i>n</i> (%)	3/14 (21)	5/15 (33)
12–16 years, <i>n</i> (%)	2/14 (14)	2/15 (13)
17 or more years, <i>n</i> (%)	3/14 (21)	2/15 (13)
Religion (%)		
Catholic	7/14 (50)	5/15 (33)
Protestant	4/14 (28)	1/15 (6.6)
Other	0/14 (0)	4/15 (27)
No religion	3/14 (21)	5/15 (33)
Ethnicity (%)		
Caucasian	9/14 (64)	8/15 (54)
Black	1/14 (7)	0/15 (0)
Pardo	4/14 (28)	7/15 (47)
Clinical characteristics		
Age of depression onset (years)	30.93 ± 10.19	30.87 ± 13.39
Illness duration (years)	8.78 ± 6.25	13.13 ± 11.92
Number of previous episodes	2.71 ± 1.32	3.53 ± 1.76
Length of current episode (months)	14.71 ± 18.92	10.13 ± 9.15
Failed antidepressant medications	3.93 ± 1.44	3.8 ± 1.89
History of ECT (%)	1/14 (7)	1/15 (6.6)
History of psychotherapy (%)	11/14 (79)	12/15 (80)
Anxiety disorder (%)	5/14 (36)	5/15 (33)
Personality disorder (%)	10/14 (71)	12/15 (80)
Melancholic (%)	12/14 (83)	12/15 (80)
Atypical (%)	2/14 (14)	3/15 (20)
Baseline HAM-D	24.07 ± 5.34	19.73 ± 4.59
Baseline MADRS	36.14 ± 6.12	30.13 ± 5.55

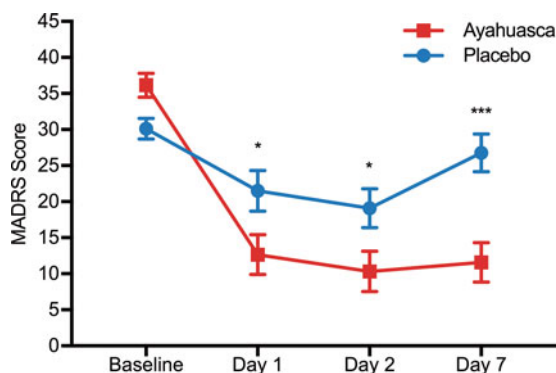
M, male; F, female; ECT, electroconvulsive therapy. Values are (mean ± s.d.).

Online Supplementary Figs. S1 and S2 show individual MADRS scores %-changes from baseline, at all time points. Although individual variance was high, we found improvement in depression severity for all patients in the ayahuasca group 7 days after dosing, while four patients in the placebo group have worsened their symptoms.

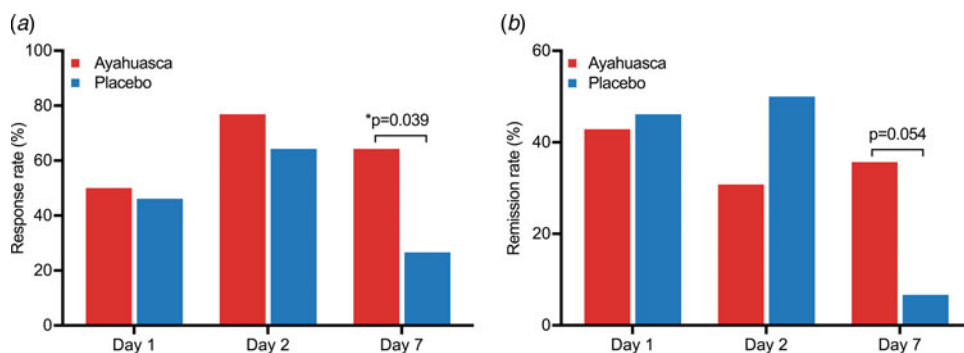
Patients exhibited transient acute changes in CADSS and BPRS+ scales, with slightly increased scores at +1:40 h after ayahuasca intake: 34.8% (BPRS+) and 21.6% (CADSS) (online Supplementary Table S5). There was a trend increased toward significance observed in CADSS scores at 1:40 h after ayahuasca intake ( $p = 0.052$ ). There



**Fig. 2.** HAM-D scores at baseline and seven days after dosing. Statistical analysis shows a significant difference between ayahuasca (squares) and placebo (circles) seven days after dosing ( $p = 0.019$ ). Between-groups effect size is high (Cohen's  $d = 0.98$ ). Values are (mean  $\pm$  s.e.m.). HAM-D scores: mild depression (8–16), moderate (17–23), severe ( $\geq 24$ ).



**Fig. 3.** MADRS scores as a function of time. Significant differences are observed between ayahuasca (squares) and placebo (circles) at D1 ( $p = 0.04$ ), D2 ( $p = 0.04$ ) and D7 ( $p < 0.0001$ ). Between groups effect sizes are high at all time points after dosing: D1 (Cohen's  $d = 0.84$ ), D2 (Cohen's  $d = 0.84$ ), and D7 (Cohen's  $d = 1.49$ ). Values are (mean  $\pm$  s.e.m.). MADRS scores: mild depression (11–19), moderate (20–34), severe ( $\geq 35$ ). \* $p < 0.05$ ; \*\*\* $p < 0.0001$ .



**Fig. 4.** Response and remission rates as a function of time. Response (a) and remission (b) rates were high for both groups at D1 and D2. At D7, response rate was significantly higher for ayahuasca [OR 4.95 (95% CI 1.11–21.02);  $p = 0.04$ ; NNT = 2.66], while remission rate showed a trend toward significance [OR 7.78 (95% CI 0.81–77.48);  $p = 0.054$ ; NNT = 3.44].

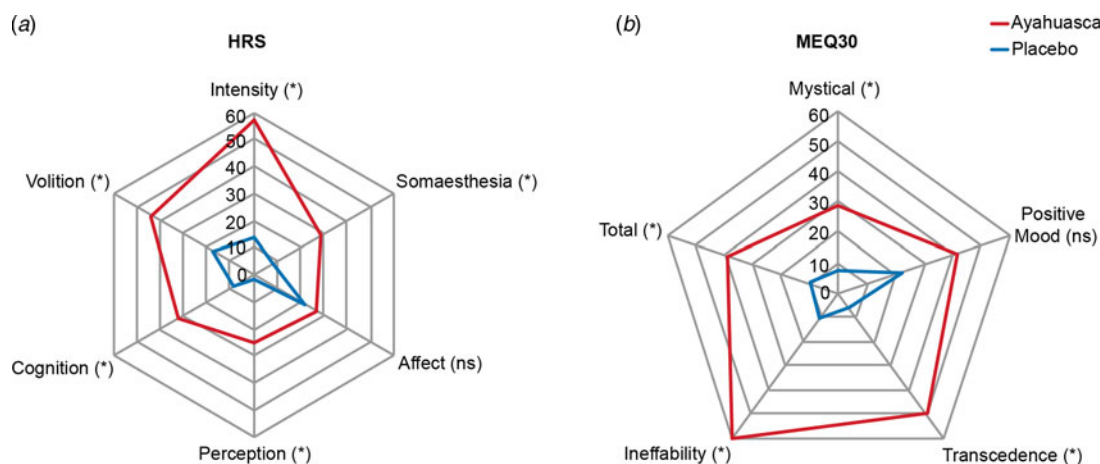
were no significant changes in BPRS+ scores at any time point (online Supplementary Table S5). Changes in BPRS+ and CADSS scores did not correlate with improvements in depression symptoms (online Supplementary Fig. S3). We did not observe significant increased manic symptoms as measured by the YMRS at 1:40 h after ayahuasca intake ( $p = 0.26$ ). We also observed transient nausea (Aya = 71%, Pla = 26%;  $p = 0.027$ ), vomiting (Aya = 57%, Pla = 0%;  $p = 0.0007$ ), transient anxiety (Aya = 50%, Pla = 73%;  $p = 0.263$ ), restlessness (Aya = 50%, Pla = 20%;  $p = 0.128$ ), and transient headache (Aya = 42%, Pla = 53%;  $p = 0.715$ ) (online Supplementary Table S6).

The average and standard error of mean (s.e.m.) for each factor of both scales (HRS and MEQ30) are presented in online Supplementary Table S7, and in online Supplementary Figs. S4 and S5. Two patients did not respond to the HRS, leaving 27 respondents: 13 in the ayahuasca group, 14 in the placebo. The MEQ30 was added to the study with the trial already ongoing, and only 15 patients responded to it: eight in the ayahuasca group, seven in the placebo.

Figure 5a shows the HRS average score for all six subscales. We found significant differences between groups in five of them. The ayahuasca group scored higher than the placebo group in perception ( $p < 0.0001$ ), somaesthesia ( $p < 0.0001$ ), cognition ( $p < 0.0001$ ), intensity ( $p < 0.0001$ ), and volition ( $p = 0.0003$ ). Only affect was not significantly different between groups ( $p = 0.38$ ). Figure 5b shows scores for all factors of the MEQ30. We found significant between-groups differences in mystical ( $p = 0.049$ ), transcendence of time and space ( $p = 0.0008$ ), ineffability ( $p = 0.003$ ), and in total MEQ score ( $p = 0.004$ ). For all of these, the ayahuasca group scored higher than the placebo group. The only positive mood was not significantly different between groups ( $p = 0.32$ ).

Correlations between HRS and MADRS changes from baseline to D7 were not statistically significant when assessing each group separately, ayahuasca, or placebo (online Supplementary Fig. S6). However, we observed a positive significant correlation between MADRS changes at D7 with the HRS subscale 'perception' ( $r = 0.90$ ,  $p = 0.002$ ), when considering the subgroup of ayahuasca responders only (online Supplementary Fig. S7).

Despite the small number of patients, we found a negative correlation between changes in MADRS scores and the MEQ30 factor transcendence of time and space in patients in the ayahuasca group ( $r = -0.84$ ,  $p = 0.009$ ). The remaining three factors (ineffability, mystical, and positive mood) and MEQ30 total score were not significantly correlated with MADRS score changes (online Supplementary Fig. S8).



**Fig. 5.** HRS subscales and MEQ30 factors during the dosing session. (a) Significantly higher scores in the ayahuasca group in five HRS subscales: perception ( $p < 0.0001$ ), somaesthesia ( $p < 0.0001$ ), cognition ( $p < 0.0001$ ), intensity ( $p < 0.0001$ ), and volition ( $p = 0.0003$ ). Only affect was not significantly different between groups ( $p = 0.38$ ). (b) Significantly higher MEQ30 scores in the ayahuasca group in the total MEQ30 score ( $p = 0.004$ ), and three of its factors: mystical ( $p = 0.049$ ), transcendence of time and space ( $p = 0.0008$ ), and ineffability ( $p = 0.003$ ), except for the positive mood ( $p = 0.32$ ). Values are expressed as a percentage of maximum possible score.

## Discussion

We found evidence of rapid antidepressant effect after a single dosing session with ayahuasca when compared with placebo. Depression severity changed significantly but differently for the ayahuasca and placebo groups. Improvements in the psychiatric scales in the ayahuasca group were significantly higher than those of the placebo group at all time points after dosing, with increasing between-group effect sizes from D1 to D7. Response rates were high for both groups at D1 and D2 and were significantly higher in the ayahuasca group at D7. Between-groups remission rate showed a trend toward significance at D7.

The within-group effect size found for ayahuasca at D7 (Cohen's  $d = 2.22$ ) is compatible with our earlier open-label study (Cohen's  $d$  at D7 = 1.83) (Sanches *et al.*, 2016), and compatible with the one found in a recent open-label trial with psilocybin for depression (Hedges'  $g = 3.1$ ) (Carhart-Harris *et al.*, 2016). Our results are comparable with randomized controlled trials that used ketamine in treatment-resistant depression. Although both ketamine and ayahuasca are associated with rapid antidepressant effects, their response time-courses and mechanisms of action seem to differ. Previous studies with ketamine have found the largest between-group effect size at D1 (Cohen's  $d = 0.89$ ), reducing toward D7 (Cohen's  $d = 0.41$ ) (Berman *et al.*, 2000; Zarate *et al.*, 2006; Murrrough *et al.*, 2013; Lapidus *et al.*, 2014). In contrast, the effect sizes observed herein were large, but smallest, at D1 (Cohen's  $d = 0.84$ ), and largest at D7 (Cohen's  $d = 1.49$ ). These differences are also reflected in the response rates. At D1, the response rate to ketamine lies between 37 and 70%, whereas in our study 50% of the patients responded to ayahuasca. At D7, the ketamine response rate ranges between 7 and 35% (Berman *et al.*, 2000; Zarate *et al.*, 2006; Murrrough *et al.*, 2013; Lapidus *et al.*, 2014), while in our study 64% responded to ayahuasca.

The placebo effect was high in our study, and higher than most studies with. While we find a response rate to placebo of 46% at D1, and 26% at D7, ketamine trials have found a placebo effect of the order of 0–6% at D1, and 0–11% at D7 (Berman *et al.*, 2000; Zarate *et al.*, 2006; Murrrough *et al.*, 2013; Lapidus *et al.*, 2014). Several factors may account for the high placebo effect observed herein. First, the higher placebo effect has been found in patients

with low socioeconomic status (Sonawalla and Rosenbaum, 2002), which was the case of our study. Most patients were living under significant psychosocial stressors, and during our trial, they stayed at a 'very comfortable and very supportive environment', as reported by the patients themselves. Therefore, part of the increased placebo effects found in our study might be due to this 'care effect'. Second, patients with comorbid personality disorders present higher placebo responses (Ripoll, 2013), and in our study, most patients (76%) also suffered from personality disorders, most of them in cluster B.

A growing body of evidence gives support to the observed rapid antidepressant effects of ayahuasca (Palhano-Fontes *et al.*, 2014). For instance, sigma-1 receptors ( $\sigma 1R$ ) have been implicated in depression, and it was reported to be activated by N, N-DMT (Cai *et al.*, 2015; Carbonaro and Gatch, 2016). Moreover, it has been shown that the administration of  $\sigma 1R$  agonists results in antidepressant-like effects, which are blocked by  $\sigma 1R$  antagonism (Cai *et al.*, 2015). Furthermore,  $\sigma 1R$  upregulates neurotrophic factors such as brain-derived neurotrophic factor (BDNF) and nerve growth factor (NGF), proteins whose regulation and expression seem to be involved in the pathophysiology of depression (Cai *et al.*, 2015). Nevertheless, it is worth mentioning that antidepressants with  $\sigma 1R$  agonist profile do not present clinically significant antidepressant effect. For instance, the antidepressant fluvoxamine, which has a high affinity for  $\sigma 1R$  do not present response rates compatible to that was found herein (Delgado *et al.*, 1988; Hashimoto, 2009).

The effects observed might be in part due to the presence of MAOi in the brew. In fact, studies in animal models reported that chronic administration of harmine reduces immobility time, increases climbing and swimming time, reverses anhedonia, increases adrenal gland weight, and increases BDNF levels in the hippocampus (Fortunato *et al.*, 2010a, 2010b). All of these are compatible with antidepressant effects. Likewise, harmine seems to stimulate neurogenesis of human neural progenitor cells, derived from pluripotent stem cells (Dakic *et al.*, 2016), and progenitor cells from adult mice brains (Morales-García *et al.*, 2017), a mechanism also observed in rodents following antidepressant treatment. In addition, a recent study in rodents found that a

single ayahuasca dose increases swimming time in a forced-swim test (Pic-Taylor *et al.*, 2015).

Brain circuits modulated by psychedelics show great overlap with those involved in mood disorders (Vollenweider and Kometer, 2010). We recently found that a single ayahuasca session in patients with depression increases blood flow in brain regions consistently implicated in the regulation of mood and emotions, such as the left nucleus accumbens, right insula and left subgenual area (Otte *et al.*, 2016; Sanches *et al.*, 2016). Moreover, we have shown that ayahuasca reduces the activity of the Default Mode Network (Palhano-Fontes *et al.*, 2015), a brain network found to be hyperactive in depression (Sheline *et al.*, 2009).

Over the last two decades, mental health evaluations of regular ayahuasca consumers have shown preserved cognitive function, increased well-being, reduction of anxiety, and depressive symptoms when compared to non-ayahuasca consumers (Grob *et al.*, 1996; Bouso *et al.*, 2012; Barbosa *et al.*, 2016). Moreover, a recent study observed that a single dose of ayahuasca enhanced mindfulness-related capacities (Soler *et al.*, 2016), and meditation practices have been associated with antidepressant effects (Segal *et al.*, 2010).

Prior studies suggest that elements of the psychedelic experience, such as experiences of mystical-type, account for the therapeutic benefit (Bogenschutz *et al.*, 2015; Garcia-Romeu *et al.*, 2015; Majić *et al.*, 2015; Griffiths *et al.*, 2016; Ross *et al.*, 2016). We found significant increased MEQ30 scores during the effects of ayahuasca. We also observed an inverse correlation between MADRS score changes at D7 with 'transcendence of time and space' MEQ30 factor.

Furthermore, HRS dimensions seem important to the clinical outcome, particularly 'perception', a subscale that comprehends changes in visual, auditory, and body sensations. Visions are common during the effects of ayahuasca, and are most frequent with the eyes closed (Shanon, 2002; De Araujo *et al.*, 2012). It has been suggested that visions may play an important role in the therapeutic effect of ayahuasca, as they may help bringing clarity to introspective events (Freckska *et al.*, 2016). It is interesting to observe that changes in perception taken alone are not sufficient to predict the positive clinical outcome, as for instance, we find that some patients presented increased scores in 'perception' without significant clinical response.

No serious adverse events were observed during or after dosing. Although 100% of the patients reported feeling safe, the ayahuasca session was not necessarily a pleasant experience. In fact, some patients reported the opposite, as the experience was accompanied by much psychological distress. Most patients reported nausea, and about 57% have vomited, although vomiting is traditionally not considered a side effect of ayahuasca, but rather part of a purging process (Tafur, 2017).

Although promising, this study has some caveats and limitations worth mentioning. The number of participants is modest, and therefore randomized trials in larger populations are necessary. The study was limited to patients with treatment-resistant depression, with a long course of illness, and high comorbid personality disorder, which altogether precludes a simple extension of these results to other classes of depression. Another challenge of the research with psychedelics is maintaining double blindness, as the effects of psychedelics are unique. We were particularly keen to ensure blindness throughout the entire experiment, and to that end, we adopted a series of additional measures to preserve blindness. All patients were naïve to ayahuasca, with no previous experience with any other psychedelic substance. Clinical

evaluations involved a team of five psychiatrists. For every patient, one psychiatrist was responsible for clinical evaluation during the dosing session and a different one for the follow-up assessments. The substance used as placebo increased anxiety and induced nausea. In fact, five patients misclassified placebo as ayahuasca, and two of them showed a response at D7 (online Supplementary Table S2). Therefore, we believe blindness was adequately preserved in our study.

Since the prohibition of psychedelics in the late 1960s, research with these substances has almost come to a halt. Before research restrictions, psychedelics were at early stage testing for many psychiatric conditions, including obsessive-compulsive disorder and alcohol dependence. By mid-1960s, over 40,000 subjects had participated in clinical research with psychedelics, most of them in uncontrolled settings (Vollenweider and Kometer, 2010). To our knowledge, this is the first randomized placebo-controlled trial to investigate the antidepressant potential of a psychedelic in a population of patients with treatment-resistant depression. Overall, this study brings new evidence supporting the safety and therapeutic value of psychedelics, dosed within an appropriate setting, to help treat depression.

**Supplementary material.** The supplementary material for this article can be found at <https://doi.org/10.1017/S0033291718001356>

**Acknowledgements.** The authors would like to express their gratitude to all patients who volunteered for this experiment. To the Brain Institute and to the Hospital Universitário Onofre Lopes (HUOL), both from the Federal University of Rio Grande do Norte (UFRN) for always giving the necessary institutional support. To the laboratory of Pharmacognosy for helping with placebo preparation. To Edilson Fernandes, for carefully preparing the Ayahuasca batch used in our study, and for the fruitful discussion, particularly about the dosing session. To Sidarta Ribeiro, for the enthusiastic support throughout the study. To Dr Ricardo Lagreca, for the unconditional support. To Beatriz Labate, for the fruitful discussions. To Altay Souza and João Sato for assistance with statistical analysis. To Deborah Maia, Ranna Brito, Tayrine Lopes, Lizie Brasileiro, Artur Moraes, Isaac Campos, Brígida Albuquerque, Marianna Lucena, Fernanda Araújo, Raissa Nóbrega, Marina Leonardo, Kaique Andrade, Rodolfo Lira, Giuliana Travassos, for helping with data acquisition. To Prof. Octávio Pontes-Neto and Adriano Tort for critical review of the manuscript. To the Brazilian federal funding agencies CNPq (grants #466760/2014 & #479466/2013) and CAPES (grants #1677/2012 & #1577/2013) for providing financial support.

**Author contributions.** PPF, KCA, NGC, BLS, JR, JCA, LFT, SAMR, FO, RS, JAC, JH, EA, JPMO, and DBA contributed to study design and conception. FRRS and AASJ conceived and developed the substance used as placebo. GOS and MY conducted the analysis to determine alkaloid concentrations. JA coordinated the psychology team. NGC coordinated the biochemistry team. DB, EA, and JPMO recruited the patients. PPF, HO, KCA, MN, JP, BA, and DBA coordinated data acquisition. DBA coordinated the trial. PPF, HO, KCA, MN, JP, JPMO, and DBA analyzed data and interpreted the results. PPF, HO, KCA, MN, JP, and DBA were responsible for the first draft of the manuscript. All authors read, critically revised, and approved the manuscript.

**Financial support.** This study was funded by the Brazilian National Council for Scientific and Technological Development (CNPq, grants #466760/2014 & #479466/2013), and by the CAPES Foundation within the Ministry of Education (grants #1677/2012 & #1577/2013). The authors declare no competing financial interests.

**Conflict of interest.** None.

**Ethical standards.** The authors assert that all procedures contributing to this work comply with the ethical standards of the relevant national and institutional committees on human experimentation and with the Helsinki Declaration of 1975, as revised in 2008.

## References

- Barbosa PC, Strassman RJ, da Silveira DX, Areco K, Hoy R, Pommy J, Thoma R and Bogenschutz M (2016) Psychological and neuropsychological assessment of regular hoasca users. *Comprehensive Psychiatry* **71**, 95–105.
- Berman RM, Cappiello A, Anand A, Oren DA, Heninger GR, Charney DS and Krystal JH (2000) Antidepressant effects of ketamine in depressed patients. *Biological Psychiatry* **47**, 351–354.
- Bogenschutz MP, Forchimes AA, Pommy JA, Wilcox CE, Barbosa P and Strassman RJ (2015) Psilocybin-assisted treatment for alcohol dependence: a proof-of-concept study. *Journal of Psychopharmacology* **29**, 289–299.
- Bouso JC, González D, Fondevila S, Cutchet M, Fernández X, Ribeiro Barbosa PC, Alcázar-Córcoles M, Araújo WS, Barbanoj MJ, Fábregas JM and Riba J (2012) Personality, psychopathology, life attitudes and neuropsychological performance among ritual users of ayahuasca: a longitudinal study. *PLoS ONE* **7**, e42421.
- Bremner JD, Krystal JH, Putnam FW, Southwick SM, Marmar C, Charney DS and Mazure CM (1998) Measurement of dissociative states with the clinician-administered dissociative states scale (CADSS). *Journal of Traumatic Stress* **11**, 125–136.
- Cai S, Huang S and Hao W (2015) New hypothesis and treatment targets of depression: an integrated view of key findings. Shanghai Institutes for Biological Sciences, Chinese Academy of Sciences. *Neuroscience Bulletin* **31**, 61–74.
- Callaway JC, McKenna DJ, Grob CS, Brito GS, Raymon LP, Poland RE, Andrade EONO, Andrade EONO and Mash DC (1999) Pharmacokinetics of Hoasca alkaloids in healthy humans. *Journal of Ethnopharmacology* **65**, 243–256.
- Carbonaro TM and Gatch MB (2016) Neuropharmacology of N, N-dimethyltryptamine. *Brain Research Bulletin* **126**, 74–88.
- Carhart-Harris RL, Bolstridge M, Rucker J, Day CMJ, Erritzoe D, Kaelen M, Bloomfield M, Rickard JA, Forbes B, Feilding A, Taylor D, Pilling S, Curran VH and Nutt DJ (2016) Psilocybin with psychological support for treatment-resistant depression: an open-label feasibility study. *The Lancet Psychiatry* **3**, 619–627.
- Carneiro AM, Fernandes F and Moreno RA (2015) Hamilton depression rating scale and montgomery–asberg depression rating scale in depressed and bipolar I patients: psychometric properties in a Brazilian sample. *Health and Quality of Life Outcomes* **13**, 42.
- Conway CR, George MS and Sackeim HA (2017) Toward an evidence-based, operational definition of treatment-resistant depression: when enough is enough. *JAMA Psychiatry* **74**, 9–10.
- Crippa JAS, Sanches RF, Hallak JEC, Loureiro SR and Zuardi AW (2001) A structured interview guide increases Brief Psychiatric Rating Scale reliability in raters with low clinical experience. *Acta Psychiatrica Scandinavica* **103**, 465–470.
- Dakic V, de Moraes Maciel R, Drummond H, Nascimento JM, Trindade P and Rehen SK (2016) Harmine stimulates proliferation of human neural progenitors. *PeerJ* **4**, e2727.
- De Araujo DB, Ribeiro S, Cecchi GA, Carvalho FM, Sanchez TA, Pinto JP, de Martinis BS, Crippa JA, Hallak JEC and Santos AC (2012) Seeing with the eyes shut: neural basis of enhanced imagery following ayahuasca ingestion. *Human Brain Mapping* **33**, 2550–2560.
- Delgado PL, Price LH, Charney DS and Heninger GR (1988) Efficacy of fluvoxamine in treatment-refractory depression. *Journal of Affective Disorders* **15**, 55–60.
- Dos Santos RG, Valle M, Bouso JC, Nomdedéu JF, Rodríguez-Espinosa J, McIlhenny EH, Barker SA, Barbanoj MJ and Riba J (2011) Autonomic, neuroendocrine, and immunological effects of ayahuasca: a comparative study with d-amphetamine. *Journal of Clinical Psychopharmacology* **31**, 717–726.
- Fortunato JJ, Réus GZ, Kirsch TR, Stringari RB, Fries GR, Kapczinski F, Hallak JE, Zuardi AW, Crippa JA and Quevedo J (2010a) Chronic administration of harmine elicits antidepressant-like effects and increases BDNF levels in rat hippocampus. *Journal of Neural Transmission* **117**, 1131–1137.
- Fortunato JJ, Réus GZ, Kirsch TR, Stringari RB, Fries GR, Kapczinski F, Hallak JE, Zuardi AW, Crippa JA and Quevedo J (2010b) Effects of beta-carboline harmine on behavioral and physiological parameters observed in the chronic mild stress model: further evidence of antidepressant properties. *Brain Research Bulletin* **81**, 491–496.
- Frecska E, Bokor P and Winkelman M (2016) The therapeutic potentials of ayahuasca: possible effects against various diseases of civilization. *Frontiers in Pharmacology* **7**, 1–17.
- Garcia-Romeu A, Griffiths R and Johnson M (2015) Psilocybin-occasioned mystical experiences in the treatment of tobacco addiction. *Current Drug Abuse Reviews* **7**, 157–164.
- Griffiths RR, Johnson MW, Carducci MA, Umbricht A, Richards WA, Richards BD, Cosimano MP and Klinedinst MA (2016) Psilocybin produces substantial and sustained decreases in depression and anxiety in patients with life-threatening cancer: a randomized double-blind trial. *Journal of Psychopharmacology* **30**, 1181–1197.
- Grob CS, Danforth AL, Chopra GS, Hagerty M, McKay CR, Halberstadt AL and Greer GR (2011) Pilot study of psilocybin treatment for anxiety in patients with advanced-stage cancer. *Archives of General Psychiatry* **68**, 71–78.
- Grob CS, McKenna DJ, Callaway JC, Brito GS, Neves ES, Oberlaender G, Saide OL, Labigalini E, Tacla C, Miranda CT, Strassman RJ and Boone KB (1996) Human psychopharmacology of hoasca, a plant hallucinogen used in ritual context in Brazil. *Journal of Nervous and Mental Disease* **184**, 86–94.
- Hamilton M (1960) Hamilton Depression Rating Scale (HAM-D) instructions for the clinician: HAM-D scoring instructions. *Journal of Neurology, Neurosurgery, and Psychiatry* **23**, 56–62.
- Hashimoto K (2009) Sigma-1 receptors and selective serotonin reuptake inhibitors: clinical implications of their relationship. *Central Nervous System Agents in Medicinal Chemistry* **9**, 197–204.
- Labate BC and Jungaberle H (2011) *The Internationalization of Ayahuasca*. Zürich: Performanzen, interkulturelle Studien zu Ritual, Spiel and Theater. Lit.
- Lapidus KAB, Levitch CF, Perez AM, Brallier JW, Parides MK, Soleimani L, Feder A, Iosifescu DV, Charney DS and Murrough JW (2014) A randomized controlled trial of intranasal ketamine in major depressive disorder. *Biological Psychiatry* **76**, 970–976.
- Luna LE (2011) *Indigenous and Mestizo use of Ayahuasca. An Overview. The Ethnopharmacology of Ayahuasca*. Tivandrum: Transworld Research Network.
- MacLean KA, Leoutsakos JMS, Johnson MW and Griffiths RR (2012) Factor analysis of the mystical experience questionnaire: a study of experiences occasioned by the hallucinogen psilocybin. *Journal for the Scientific Study of Religion* **51**, 721–737.
- Majić T, Schmidt TT and Gallinat J (2015) Peak experiences and the afterglow phenomenon: when and how do therapeutic effects of hallucinogens depend on psychedelic experiences? *Journal of Psychopharmacology* **29**, 241–253.
- McKenna DJ, Towers GH and Abbott FS (1984) Monoamine oxidase inhibitors in South American hallucinogenic plants Part 2: constituents of orally-active Myristicaceae hallucinogens. *Journal of Ethnopharmacology* **12**, 179–211.
- Morales-García JA, de la Fuente Revenga M, Alonso-Gil S, Rodríguez-Franco MI, Feilding A, Perez-Castillo A and Riba J (2017) The alkaloids of *Banisteriopsis caapi*, the plant source of the Amazonian hallucinogen ayahuasca, stimulate adult neurogenesis *in vitro*. *Scientific Reports* **7**, 5309.
- Murrough JW, Iosifescu DV, Chang LC, Al Jurdi RK, Green CE, Perez AM, Iqbal S, Pillemer S, Foulkes A, Shah A, Charney DS and Mathew SJ (2013) Antidepressant efficacy of ketamine in treatment-resistant major depression: a two-site randomized controlled trial. *American Journal of Psychiatry* **170**, 1134–1142.
- Osório F de L, Sanches RF, Macedo LR, dos Santos RG, Maia-de-Oliveira JPP, Wichert-Ana L, de Araujo DB, Riba J, Crippa JAJA and Hallak JE (2015) Antidepressant effects of a single dose of ayahuasca in patients with recurrent depression: a preliminary report. *Revista Brasileira de Psiquiatria* **37**, 13–20.
- Otte C, Gold SM, Penninx BW, Pariante CM, Etkin A, Fava M, Mohr DC and Schatzberg AF (2016) Major depressive disorder. *Nature Reviews. Disease Primers* **2**, 16065.
- Palhano-Fontes F, Alchieri JC, Oliveira JPM, Soares BL, Hallak JEC, Galvao-Coelho N and de Araujo DB (2014) The therapeutic potentials



- of ayahuasca in the treatment of depression. In: Labate B, Cavnar C (eds) *The Therapeutic use of Ayahuasca*. Berlin, Heidelberg: Springer, pp. 23–39.
- Palhano-Fontes F, Andrade KC, Tofoli LF, Jose ACS, Crippa AS, Hallak JEC, Ribeiro S and De Araujo DB** (2015) The psychedelic state induced by ayahuasca modulates the activity and connectivity of the Default Mode Network. *PLoS ONE* **10**, e0118143.
- Pic-Taylor A, da Motta LG, de Moraes JA, Junior WM, Santos AF, Campos LA, Mortari MR, von Zuben MV and Caldas ED** (2015) Behavioural and neurotoxic effects of ayahuasca infusion (*Banisteriopsis caapi* and *Psychotria viridis*) in female Wistar rat. *Behavioural Processes* **118**, 102–110.
- Riba J, Valle M, Urbano G, Yritia M, Morte A and Barbanj MJ** (2003) Human pharmacology of ayahuasca: subjective and cardiovascular effects, monoamine metabolite excretion, and pharmacokinetics. *Journal of Pharmacology and Experimental Therapeutics* **306**, 73–83.
- Ripoll LH** (2013) Psychopharmacologic treatment of borderline personality disorder. *Dialogues in Clinical Neuroscience* **15**, 213–224.
- Ross S, Bossis A, Guss J, Agin-Liebes G, Malone T, Cohen B, Mennenga SE, Belser A, Kalliontzis K, Babb J, Su Z, Corby P and Schmidt BL** (2016) Rapid and sustained symptom reduction following psilocybin treatment for anxiety and depression in patients with life-threatening cancer: a randomized controlled trial. *Journal of Psychopharmacology* **30**, 1165–1180.
- Sanches RF, de Lima Osório F, dos Santos RG, Macedo LRH, Maia-de-Oliveira JP, Wichert-Ana L, de Araujo DB, Riba J, Crippa JAS and Hallak JEC** (2016) Antidepressant effects of a single dose of ayahuasca in patients With recurrent depression: a SPECT study. *Journal of Clinical Psychopharmacology* **36**, 77–81.
- Segal ZV, Bieling P, Young T, MacQueen G, Cooke R, Martin L, Bloch R and Levitan RD** (2010) Antidepressant monotherapy v. sequential pharmacotherapy and mindfulness-based cognitive therapy, or placebo, for relapse prophylaxis in recurrent depression. *Archives of General Psychiatry* **67**, 1256–1264.
- Shanon B** (2002) *The Antipodes of the Mind: Charting the Phenomenology of the Ayahuasca Experience*. Oxford, New York: Oxford University Press.
- Sheline YI, Barch DM, Price JL, Rundle MM, Vaishnavi SN, Snyder AZ, Mintun MA, Wang S, Coalson RS and Raichle ME** (2009) The default mode network and self-referential processes in depression. *Proceedings of the National Academy of Sciences of the United States of America* **106**, 1942–1947.
- Soler J, Elices M, Franquesa A, Barker S, Friedlander P, Feilding A, Pascual JC and Riba J** (2016) Exploring the therapeutic potential of ayahuasca: acute intake increases mindfulness-related capacities. *Psychopharmacology* **233**, 823–829.
- Sonawalla SB and Rosenbaum JF** (2002) Placebo response in depression. *Dialogues in Clinical Neuroscience* **4**, 105–113.
- Spruce R and Wallace AR** (1908) *Notes of a Botanist on the Amazon & Andes*. Macmillan, London.
- Strassman RJ, Qualls CR, Uhlenhuth EH and Kellner R** (1994) Dose-response study of N,N-dimethyltryptamine in humans: II. Subjective effects and preliminary results of a new rating scale. *Archives of General Psychiatry* **51**, 98–108.
- Tafur J** (2017) *The Fellowship of the River: A Medical Doctor's Exploration into Traditional Amazonian Plant Medicine*. Espiritu, Phoenix.
- Vilela JAA, Crippa JAS, Del-Ben CM and Loureiro SR** (2005) Reliability and validity of a Portuguese version of the Young Mania Rating Scale. *Brazilian Journal of Medical and Biological Research* **38**, 1429–1439.
- Vollenweider FX and Kometer M** (2010) The neurobiology of psychedelic drugs: implications for the treatment of mood disorders. *Nature Reviews Neuroscience* **11**, 642–651.
- World Health Organization** (2017) *Depression and Other Common Mental Disorders: Global Health Estimates*. Rep. CC BY-NC-SA 3.0 IGO. Geneva: World Health Organization.
- Zarate CA, Singh JB, Carlson PJ, Brutsche NE, Ameli R, Luckenbaugh DA, Charney DS and Manji HK** (2006) A randomized trial of an N-methyl-D-aspartate antagonist in treatment-resistant major depression. *Archives of General Psychiatry* **63**, 856–864.