

MLCNY



51027000067427



THE BRITISH JOURNAL OF PSYCHIATRY

August 1986

Vol 149

MEDICAL INFOR. CT. AUG 25 1986

ISSN 0007-1250

Published by authority of
The Royal College of Psychiatrists

NOTICE TO CONTRIBUTORS

1. *The British Journal of Psychiatry* is published monthly under the auspices of the Royal College of Psychiatrists. The *Journal* publishes original work in all fields of psychiatry. Communications on general editorial matters, including manuscripts for publication, printed matter, and books for review, should be sent to *The Editor, The British Journal of Psychiatry, 17 Belgrave Square, London SW1X 8PG.*

2. Contributions are accepted for publication on the condition that their substance has not been published or submitted for publication elsewhere. The *Journal* does not hold itself responsible for statements made by contributors. Unless so stated, material in the *Journal* does not necessarily reflect the views of the Editor or the Royal College of Psychiatrists.

3. Published articles become the property of the *Journal* and can be published elsewhere, in full or in part, only with the Editor's written permission.

4. Manuscripts accepted for publication are subject to copy-editing, and to editorial changes required for conformity with *Journal* style.

5. We regret that papers unsuitable for publication will not be returned.

6. **General advice to authors** In the assessment of manuscripts submitted to the *Journal*, great importance is attached to clarity and brevity of expression. Authors should read *General Notes on the Preparation of Scientific Papers* (3rd ed. 1974, £0.45, from The Royal Society) and/or Judith Butcher's *Typescripts, Proofs and Indexes* (1980, Cambridge University Press, £2.95). Spelling should follow the *Concise Oxford Dictionary*.

The standard of statistical work in papers submitted for publication has proved to be very variable. Authors using any statistical methods at all are strongly advised to study the paper 'Statistical guidelines for contributors to medical journals' (D. G. Altman *et al.*, *British Medical Journal*, 7 May 1983, **286**, 1489-1493) at the earliest possible stage in preparing their work for publication.

7. **Manuscripts** Two high-quality copies should be submitted and the author should retain a copy. Articles must be typed on one side of the paper only, **double spaced with wide margins**, and all the pages must be numbered sequentially, starting with the title page.

a. The **title** should be brief and to the point. If necessary, a sub-title may be used to amplify the main title. The names of the authors should appear on the title-page, and **their names, degrees, affiliations and full addresses at the end of the paper.**

b. A **summary** should be given at the *beginning* of the article. It should be brief and factual and not normally more than 150 words.

c. **References** should be listed **alphabetically** at the end of the paper, **the titles of journals being given in full.** Authors should follow *Journal* style for the reference list and study the examples given below. Titles of books and journals are printed in italic and should therefore be underlined on the typescript. Reference lists not in *Journal* style will be returned to the author for correction.

Authors should check that the text references and the reference list are in complete agreement as regards dates and spelling of names. The text reference should be in the form 'Smith, 1971' or 'Smith (1971) showed that ...'

DURKHEIM, E. (1897) *Le Suicide*. Paris. Translated (1952) as *Suicide: A Study in Sociology*, by J. A. Spaulding & C. Simpson. London: Routledge & Kegan Paul.

KENDELL, R. E. (1974) The stability of psychiatric diagnoses. *British Journal of Psychiatry*, **124**, 352-358.

RUTTER, M., TIZARD, J. & WHITMORE, K. (1970) *Education, Health and Behaviour*. London: Longman.

SCOTT, P. D. (1974) Definition, classification, prognosis and treatment. In *Pathology and Treatment of Sexual Deviation* (ed. I. Rosen) Oxford: Oxford University Press.

'Personal Communications' need written authorisation.

d. **Symbols and abbreviations** Follow *Units, Symbols and Abbreviations: A Guide for Biological and Medical Editors and Authors* (3rd ed. 1977), £2.00, available from the Publications Office of the Royal Society of Medicine. Terms or abbreviations which might not be understood by the average reader should be explained at first occurrence.

e. **Tables and Figures** Each table should be on a separate sheet, with an adequate heading; table and heading should be self-explanatory without reference to the text. The desired position of the table relative to the text should be indicated in the left margin.

Figures should be individual glossy photographs, or other camera-ready prints, *not* photocopies, clearly numbered and captioned below. Avoid cluttering figures with explanatory text which is better incorporated succinctly in the caption. A figure intended to occupy a single column should be drawn (or photographed) 80-110 mm wide to allow for a 2/3 reduction; a figure requiring the whole width of the page should be 180-210 mm wide. Lettering (film-set or stencil) should be 12pt sans (initial capital for the first word only) to give 8pt on the printed page. Labels on graphs should read parallel to the axes. Units must be clearly indicated and should be in brackets (*note*—'litre' should be spelled out in full unless modified to ml, dl, etc.).

f. **Photographs** Prints must be taken directly from the original b/w negative (not, for example, from a colour slide or a printed page) and should be glossy and sharply focussed. Labels, arrows, etc. should be shown on a duplicate print or overlay. Do not write anything on photographic prints, and do not use staples or paper-clips on them. These procedures apart, all the comments on figures and tables apply equally to photographs.

8. **Proofs** A proof will be sent to the senior author of an article. Reprints, which are prepared at the same time as the *Journal*, should be ordered when the proof is returned to the Editor.

9. **Letters to the Editor** Letters should not exceed two double-spaced typed pages. They will be edited for clarity and conformity with *Journal* style and may be shortened. There should be no more than five references; tables and figures cannot be used.

THE BRITISH JOURNAL OF PSYCHIATRY

AUGUST 1986

Published monthly

Volume 149

Founded in 1853 as the *Asylum Journal* and known as the *Journal of Mental Science* from 1855 to 1963.

EDITOR

Hugh Freeman

ASSOCIATE EDITORS

Martin Roth Kenneth Rawnsley
Sidney Crown Andrew C. Smith
Alan Kerr Philip Snaith

ASSISTANT EDITORS

Sidney Bloch	Margaret Little	William Spry
Gaius Davies	Michael Reveley	Chris Thompson
Ian Falloon	Henry Rollin	Peter Tyrer
Julian Leff		Greg Wilkinson

EDITORIAL MANAGEMENT

Jacqueline Yates

SCIENTIFIC EDITOR

David Jago

ASSISTANT

Susan Marshall

ASSISTANT FOR THE BULLETIN

Elaine Millen

Correspondence, manuscripts, books for review, for both the *Journal* and the *Bulletin* should be addressed to the Editor, 17 Belgrave Square, London SW1X 8PG (Tel 01-235 8857). See inside front cover for further instructions.

Advertising enquiries, correspondence and copy should be addressed to Mr. Peter T. Mell, Advertisement Manager, PTM Professional Publications Ltd, 282 High Street, Sutton, Surrey SM1 1PQ (Tel 01-642 0162 PBX).

Subscriptions for non-members of the College are payable to British Journal of Psychiatry Subscription Department, The Royal Society of Medicine, 1 Wimpole Street, London W1M 8AE. Queries about missing or faulty copies should be addressed within six months to the printers, Henry Ling Ltd, The Dorset Press, 23 High East Street, Dorchester, Dorset DT1 1HD.

Annual subscription rates 1986 (12 issues post free)

United Kingdom: Institutions £80.00; Individuals £65.00

United States: Institutions \$230.00; Individuals \$190.00

Elsewhere: Institutions £110.00; Individuals £90.00

Single copies of the Journal, £7.00, \$14.00 (post free)

US Mailing Agents: Expeditors of the Printed Word Ltd, 527 Madison Avenue, Suite 1217, New York, NY 10022. 2nd Class postage paid at New York City, NY (USPS No. 536-870).

Back issues published before 1986 may be purchased from William Dawson & Sons Ltd, Cannon House, Folkestone, Kent, England (Tel. 0303 57421).

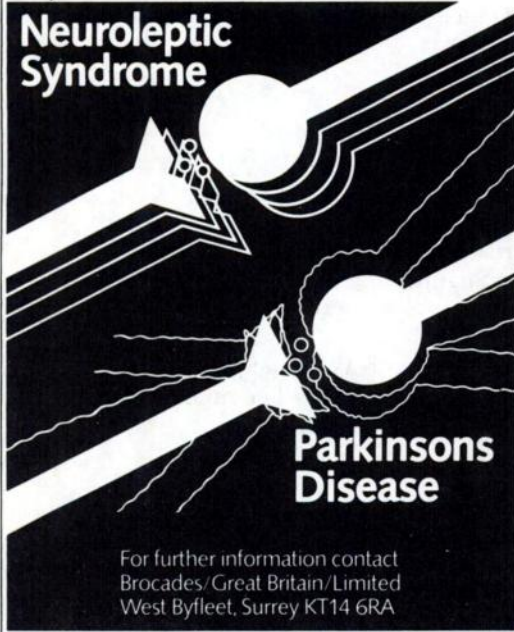
Printed by Henry Ling Ltd, The Dorset Press, 23 High East Street, Dorchester, Dorset DT1 1HD (Tel 0305 65066).

© 1986 THE ROYAL COLLEGE OF PSYCHIATRISTS

Disipal® Controls symptoms
and elevates mood.

Orphenadrine HCl

**Neuroleptic
Syndrome**



**Parkinsons
Disease**

For further information contact
Brocades/Great Britain/Limited
West Byfleet, Surrey KT14 6RA

Polity Press

The Power of Psychiatry

Edited by PETER MILLER
and NICHOLAS ROSE

Recent mental health legislation, the proposed closure of large mental illness hospitals, and the planning of community psychiatric services have all put arguments about psychiatric ideologies into the forefront of debate.

The authors consider these issues, and their discussions include the role of law in psychiatric reform, the implications of mental hospital closure and attitudes to gender and race. They examine a range of critiques of psychiatry, proposing a framework within which to comprehend its development in the twentieth century.

288 pages, hardback c.£25.00 (0 7456 0235 5)
paperback c.£8.50 (0 7456 0236 3)

Polity Press, 108 Cowley Road, Oxford OX4 1JF

**NEW
PUBLICATION**

GASKELL

The Publications Section of the Royal College of Psychiatrists
**THE PROVISION OF MENTAL HEALTH SERVICES IN BRITAIN:
THE WAY AHEAD**

Edited by Greg Wilkinson and Hugh Freeman

ISBN 0 902241 15 X

Pp 197

£7.50

Published February 1986

This unique publication indicates the scope of development in mental health service provision over the past two decades and the major challenges to future progress. It is clear that the contribution made by psychiatrists is crucial. But attention is also given to the views and perspectives of the other necessary participants: regional and district health authorities, local authorities, the provisions that make up both psychiatric and primary care, multi-disciplinary teams, families, and voluntary and other non-statutory care-giving agencies, including the private sector.

Orders with cheques should be sent to: Editorial Office, Royal College of Psychiatrists, 17 Belgrave Square, London SW1X 8PG.

THE UNIVERSITY OF CALGARY

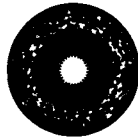
Head, Department of Psychiatry

The University of Calgary and the Foothills Provincial General Hospital have an opening for a joint position of Professor and Head of the Department of Psychiatry of the University and Director of the Department of Psychiatry at the Hospital.

The successful candidate will be an outstanding academic physician with proven administrative leadership, clinical skills and research experience. He/she will relate to the practising community and other affiliated teaching hospitals.

In accordance with Canadian immigration requirements, priority is directed to Canadian citizens and permanent residents.

Applications and nominations should be forwarded by September 30, 1986 to: Dr. M. Watanabe, Dean, Faculty of Medicine, The University of Calgary, 3330 Hospital Drive N. W. Calgary, Alberta T2N 4N1.



آغا خان یونیورسٹی
THE AGA KHAN UNIVERSITY
Faculty of Health Sciences
Medical College

Applications are invited from candidates who meet the requirements for the position of

INSTRUCTOR, DEPARTMENT OF PSYCHIATRY

The Aga Khan Medical College is now in its third year of operation. Its affiliated Aga Khan University Hospital has well equipped teaching and service laboratories and will have 721 beds when fully operational. Candidates applying for this position must have M.B.B.S. and M.R.C. Psych or American Board in Psychiatry or equivalent qualifications. Those intending to pursue a career in Pakistan will be preferred.

Salary and benefits will be offered commensurate with qualifications, experience and level of responsibility. Applications should include detailed resume, bibliography and names of at least three referees familiar with recent work history. Reply to the Personnel Director, The Aga Khan University, P.O. Box 3500, Karachi-5, Pakistan.

CANADA

Staff Psychiatrist Opportunity
in Edmonton, Alberta, Canada



The Alberta Hospital Edmonton is seeking a qualified psychiatrist with academic and clinical research interests to take charge of our sexual deviancy assessment, treatment and general psychotherapy programs in the Forensic Service.

Reporting to the Director of Forensic Services, you will lead programs designed to fully assess and treat sexual offenders and other patients with sexual deviations, as well as other patients with neurotic or behavioral problems. This service is offered in the context of a comprehensive Forensic Service, with both inpatient and outpatient resources, as well as outreach programs into the various community correctional centres. Clinical research and other academic pursuits will be strongly encouraged.

While Forensic experience is desirable, supervision and training for otherwise qualified candidates can be provided.

The Alberta Hospital Edmonton is a 648-bed fully accredited teaching hospital, affiliated with the University of Alberta. Applicants must satisfy the licensing requirements of the Alberta College of Physicians and Surgeons.

For detailed information on this position, contact Dr. Donald Milliken, the Clinical Director of the Forensic Service at (403) 973-2572.

Detailed applications should be sent to:

Dr. David R. Cornish
Associate Executive Director -
Clinical

Alberta Hospital Edmonton
Box 307
Edmonton, Alberta
Canada T5J 2J7





Forensic Psychiatrist Alberta, Canada

The Calgary General Hospital has many unique and advanced medical, diagnostic, behavioural science and research programs. This 914-bed teaching hospital is formally affiliated with the University of Calgary.

The Forensic Division, Department of Psychiatry, provides assessment and treatment facilities for the courts and correctional institutions in Southern Alberta.

Candidates must possess Canadian or equivalent qualifications.

While these positions are open to all qualified applicants, in compliance with Canadian Immigration regulations, preference will be given to Canadian citizens or landed immigrants.

Interested psychiatrists are invited to submit a recent curriculum vitae and letter of application to: **Dr. J. Arboleda-Florez, Director, Forensic Division, THE CALGARY GENERAL HOSPITAL, 841 Centre Avenue East, Calgary, Alberta, Canada, T2E 0A1, Tel: (403) 268-9202**



NEW
PUBLICATION

GASKELL

The Publications Section of the Royal College of Psychiatrists
CONTEMPORARY ISSUES IN SCHIZOPHRENIA

Edited by Alan Kerr and Philip Snaith

ISBN 0 902241 14 1

Pp 480

£17.50

This book presents a comprehensive selection of re-edited papers published in the *British Journal of Psychiatry* during the last ten years, together with a number of specially commissioned reviews of current knowledge in schizophrenia. The subject is considered under seven sections: general and historical concepts; classification and phenomenology; organic aspects; genetic aspects; social aspects; treatment; and outcome.

Contemporary Issues in Schizophrenia, published February 1986, at £17.50 postage free. Orders with cheques should be sent to: Editorial Office, Royal College of Psychiatrists, 17 Belgrave Square, London SW1X 8PG.

GRUNE & STRATTON LTD

THE SCIENTIFIC PRINCIPLES OF PSYCHOPATHOLOGY

Edited by
P MCGUFFIN
M SHANKS
R HODGSON

This book is aimed primarily at psychiatrists and clinical psychologists in training and will more than adequately cover their professional and examination needs regarding the scientific principles of their subject. Aspects of recent research in the biological, social and psychological sciences which are most relevant to the practising clinician are also provided in a critical, comprehensive but readable style, making this book a useful reference work for other physicians and professionals from allied disciplines.

1984 800pp £35.00/\$60.00 ISBN 0 8089 1667 X

NEW FROM GRUNE & STRATTON

ESSENTIALS OF POSTGRADUATE PSYCHIATRY, 2nd Edition

Edited by
PETER HILL
ROBIN MURRAY
ANTHONY THORLEY

Reviews of 1st edition

"... Precision, clarity and scholarship characterise this first textbook of Psychiatry to emerge from the world renowned Maudsley in London."

– *American Journal of Psychiatry*

"... There are no other serious British competitors ... The book under review provides the most comprehensive, balanced and up-to-date review of knowledge in psychiatry today."

– *The Lancet*

The second edition of this successful textbook provides extensive coverage of the richness and variety of psychiatry while at the same time integrating psychiatric research findings into a wider body of clinical knowledge. Written by individuals associated with the world renowned Maudsley Hospital *Essentials of Postgraduate Psychiatry* provides a more up-to-date and scientific volume than any existing psychiatric text.

SPRING 1986 £39.50/\$79.50 (Approx.) ISBN 0 8089 1697 1

All prices subject to change without notice
Sterling prices apply to UK customers only

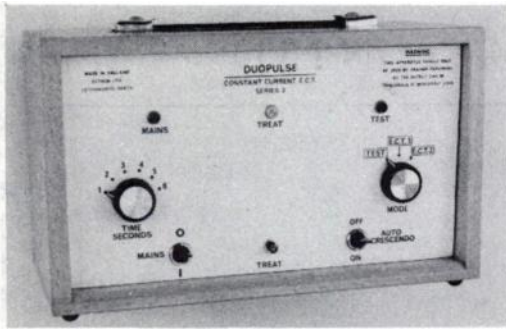
GRUNE & STRATTON

(A Subsidiary of Harcourt Brace Jovanovich, Publishers)

24-28 Oval Rd, London NW1 7DX, UK

Orlando, FL32887, USA

SLB/BJP/5



**THE DUOPULSE
CONSTANT CURRENT E.C.T.
APPARATUS
SERIES 3**

The standard hospital model.

ECTONUSTIM: as DUOPULSE
incorporating Cerebral Stimulator.

ECTRON CCX: designed for
experimental/research work.

Also
SOMLEC
ELECTRO SLEEP APPARATUS

Send for full details
ECTRON LTD.,
KNAP CLOSE,
LETCWORTH,
HERTS SG6 1AQ
ENGLAND.

Telephone: LETCWORTH (0462) 682124
Telex: 825562 CHACOM G ECTRON
Cables: ECTRON LETCWORTH

Henry Ling Limited

Lithographic printers and binders

*Offer a complete service for
the production of medical and
academic journals for learned
institutions and major
publishers. While offering
comprehensive composition we
also print many publications
from customer's camera-ready
copy.*



The Dorset Press
Dorchester DT1 1HD
Dorchester (0305) 65066

**NOTICE TO
ADVERTISERS**

Applications for advertisement
space in
The British Journal of Psychiatry
should be made to:

**PTM PROFESSIONAL
PUBLICATIONS
LIMITED**

282 High Street,
Sutton, Surrey SM1 1PQ
Telephone: 01-642 0162

THE BRITISH JOURNAL OF PSYCHIATRY

August 1986

Volume 149

Lecture

Community Care of the Acutely Mentally Ill; *John Hoult* 137

Review Article

Witchcraft and Psychotherapy; *J. S. Neki, B. Joinet, N. Ndosì, G. Kilonzo, J. G. Hauli and G. Duvinage* 145

Papers

Behaviour Problems in Retarded Children with Special Reference to Down's Syndrome; *Ann Gath and Dianne Gumley* 156

Family Background of Children with Down's Syndrome and of Children with a Similar Degree of Mental Retardation; *Ann Gath and Dianne Gumley* 161

Psychiatric Disorder in the General Hospital; *R. Mayou and K. Hawton* 172

Conditioning and Sensitisation in the Longitudinal Course of Affective Illness; *Robert M. Post, David R. Rubinow and James C. Ballenger* 191

Alterations in Cerebral Laterality during Acute Psychotic Illness; *Bruce E. Wexler* 202

Maintenance Treatment of Erectile Impotence by Cavernosal Unstriated Muscle Relaxant Injection; *G. S. Brindley* 210

Orofacial Dyskinesia, Cognitive Function and Medication; *P. Thomas and R. McGuire* 216

The Role of Zinc in Senile Dementia; *C. Kenn and E. Gibb* 221

Temporary Urinary Incontinence in the Acute Psychiatric Patient without Delirium or Dementia; *G. E. Berrios* 224

Brief Reports

Depression in Schizophrenia: A Study of Prevalence and Treatment; *R. Elk, B. J. Dickman and A. F. Teggì* 228

Electro-Oculogram Changes at the Switch in a Manic-Depressive Patient; *S. M. Hanna, F. A. Jenner and L. P. Souster* 229

A Study of Violent Behaviour Among In-Patients in a Psychiatric Hospital; *M. Pearson, E. Wilmot and M. Padi* 232

The Influence of Psychological Factors on the Opiate Withdrawal Syndrome; *G. T. Phillips, M. Gossop and B. Bradley* 235

Seasonal Hypomania in a Patient with Cold Urticaria; *N. S. Harvey and W. I. Mikhail* 238

Priapism and Psychotropic Medication; *J. Kogeorgos and C. de Alwis* 241

Correspondence 244

A Hundred Years Ago; Researched by Henry Rollin 247

Book Reviews 248

Index to Volume 148 (January-June 1986) loose insert

Notice to contributors, subscribers and advertisers inside front cover