

Micro.EDS™ MicroPlus™

X-ray Microanalysis
from Dapple Systems

Upgrade your dedicated system with our flexible software and multichannel analyzer. Choose **Micro.EDS** for IBM PC compatibles or **MicroPlus** for the Macintosh II series. Both provide:

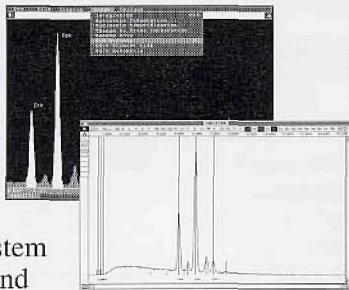
- KLM markers for rapid peak identification
- Energy region output for x-ray distribution map
- Automatic integration with peak deconvolution
- ZAF and $\phi(\rho z)$ quantitative correction methods

Assure continued reliable operation at a fraction of the cost of replacing the entire system. To learn more about the best way to expand your present analytical capabilities, call or write today.



355 W. Olive Avenue
Suite 100
Sunnyvale, CA 94086

Tel: (408) 733-3283
Fax: (408) 736-2350



A NEW TWIST IN MICROSCOPY TRAINING AND SUPPORT

What has 30 legs, 5 companies, covers the entire U.S. and loves to look down a microscope? **Microscopy/Marketing and Education**, a new approach to providing customized, on-site training and support. Originally founded by Barbara Foster in 1981 under the name "Microscopy/Microscopy Education", the new "M/ME" has expanded in focus to include applications development and training in optical, confocal and electron microscopy, as well as in microtomy, image analysis and microscopy marketing services.

The concept is simple: to make use of joined resources to bring to a client, in his/her own laboratory, that specific degree of training and/or applications expertise required by our demanding industry. Current core companies in the consortium include SEMTraining, Resource Engineering, Real Time Computer Consulting and the EMMES Group. An ad hoc group of part-time consultants adds another dozen experts - all supported by over 20 dealers and representatives in the U.S.

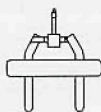
According to Ms. Foster, "the consortium creates a synergism which gives us greater ability to say "Yes" to customer needs."

MICROSCOPY/MARKETING EDUCATION
53 ELTON ST, SPRINGFIELD, MA 01108 - TEL: (413)746-6931

BARRY SCIENTIFIC LaB₆ CATHODES

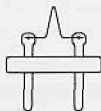
with MULTI-THOUSAND HOUR LIFETIMES

*Extended Lifetime / Superior Quality
High Brightness / Low Energy Spread
Exceptional Stability / Easy Operation
Stress-Free Carbon Mounting
Extensive Application Notes on Request*



TUNGSTEN SEM/TEM FILAMENTS

*Best Quality / Fully Annealed
Precision Aligned / Strain Free
New Packaging / Individually Secured
Filaments Visible in Opened Box
Easy-To Use Handling Tool*



WEHNELT APERTURES

Precision Polished Ta Apertures



Exclusive Retail Distributor for North America

BARRY SCIENTIFIC

P.O. Box 173, 58 Streeter Road, Fiskdale, MA USA 01518
Tel (508) 347-9855 1-800-348-2257 Fax (508) 347-8280

Products Manufactured By

KIMBALL PHYSICS INC.

Partners in Discovery:

Electron Microscopes from Carl Zeiss

We offer a full range of TEMs
& digital SEMs for all research
& QC applications.

Carl Zeiss, Inc.

Electron Optics Division
One Zeiss Drive
Thornwood, New York 10594
914 • 681 • 7745



800-356-1090

Fax 914-681-7443