


Article

Stratigraphy of volcanic rock successions of the North Atlantic rifted margin: the offshore record of the Faroe–Shetland and Rockall basins

David W. JOLLEY^{1*} , John M. MILLETT^{1,2}, Nick SCHOFIELD¹, Lena BROADLEY¹ and Malcolm J. HOLE¹¹ Department of Geology and Geophysics, School of Geosciences, University of Aberdeen, Aberdeen, UK.² VBPR AS, Høienhald, Oslo, Norway.*Corresponding author. Email: d.jolley@abdn.ac.uk

ABSTRACT: The integration of biostratigraphical, wireline log, geophysical and available geochronological ages has identified two principal periods of volcanism in the Faroe–Shetland and Rockall basins. The first is pre-breakup, upper Danian to lower Thanetian: in the Rockall and Faroe–Shetland basins, isolated volcanic activity from 62 Ma to 58.7 Ma is identified in areas closely linked to the SSW–NNE structural fabric of the continental margin. Volcanic activity was concentrated at basin flank fissures and localised point sources. This rift-flank volcanism led to widespread volcanic ash deposition, localised lava flow fields and the formation of igneous centres. Some of the Hebridean and onshore central complexes (e.g., Rum) were uplifted and rapidly eroded during the later pre-breakup period, while additional accommodation space was developed in the adjacent offshore basins. Onset and termination of pre-breakup volcanism is correlated to intra-plate stress regimes in Europe, following the cessation of convergence of Africa and Europe in the Danian. The second is syn-breakup, upper Thanetian to Ypresian, initiated at *ca.* 57 Ma in the Rockall and Faroe–Shetland basins. Initial high-volume extrusive igneous successions were focussed to the W in the Faroe–Shetland Basin. In the centre and E of the Faroe–Shetland and Rockall basins, separate eruption loci developed along pre-existing lineaments either as fissure or point-sourced lava fields. Short-term cessation of eruption at \sim 55.8 Ma was followed by resumption of flood basalt eruptions and a shift in focus to the NW. Fluctuations in the syn-breakup eruption tempo are reflected in the formation and subsequent rejuvenation of prominent unconformities, only previously recognised as a single erosive event. The W and northward shift of eruption focus, and the eruption of mid ocean ridge basalt-type lavas in the syn-breakup period reflect the onset of lithospheric thinning in the nascent North Atlantic Rift prior to flooding of the rift and eruption of the widespread lower Ypresian Balder Formation tephra.

KEY WORDS: biostratigraphy, depositional sequences, Faroe–Shetland Basin, Palaeogene volcanism, Rockall Basin, volcanic ash, volcanism.

The Faroe–Shetland and Rockall basins (Fig. 1) contain a comprehensively studied sequence of marine and terrestrial Palaeogene sedimentary rocks, which have a well-defined stratigraphical framework (Ebdon *et al.* 1995; Ritchie *et al.* 2011; Stoker & Varming 2011) and depositional palaeogeography. This stratigraphical framework has been derived from analysis of sedimentary rock successions to the E of the Faroe–Shetland escarpment, a feature which has been taken to mark the edge of the North Atlantic Igneous Province (NAIP) flood basalt lava field. To the W of the Faroe–Shetland escarpment, thick sequences of extrusive basaltic lavas, hyaloclastites and volcanoclastic sedimentary rocks dominate the early Palaeogene basin fill (Schofield & Jolley 2013). At the eastern margin of the Faroe–Shetland Escarpment, volcanic and volcanoclastic rocks interdigitate with siliciclastic sedimentary rock

successions in the Flett and Judd sub-basins (Fig. 1). Associated with these volcanic rocks is an extensive intrusive complex – the Faroe–Shetland Sill Complex (FSSC) – which extends into the central and eastern parts of the Faroe–Shetland Basin (FSB; Rateau *et al.* 2013; Schofield *et al.* 2015).

Occurrences of tephra or ‘tuff’ layers, interpreted to originate as volcanic ash airfall deposits (Knox & Morton 1988), are more widespread than the associated lava fields. These tephra are recognised within the FSB and are correlative with ashes recorded in the Rockall, North Sea and Anglo-Paris basins (Knox & Morton 1988; Ellison *et al.* 1994). The tephra record of the North Sea Basin was divided into two periods, termed by Knox & Morton (1988) as Phase 1 and Phase 2 (the latter with four subdivisions). A recent review of tuffs within the



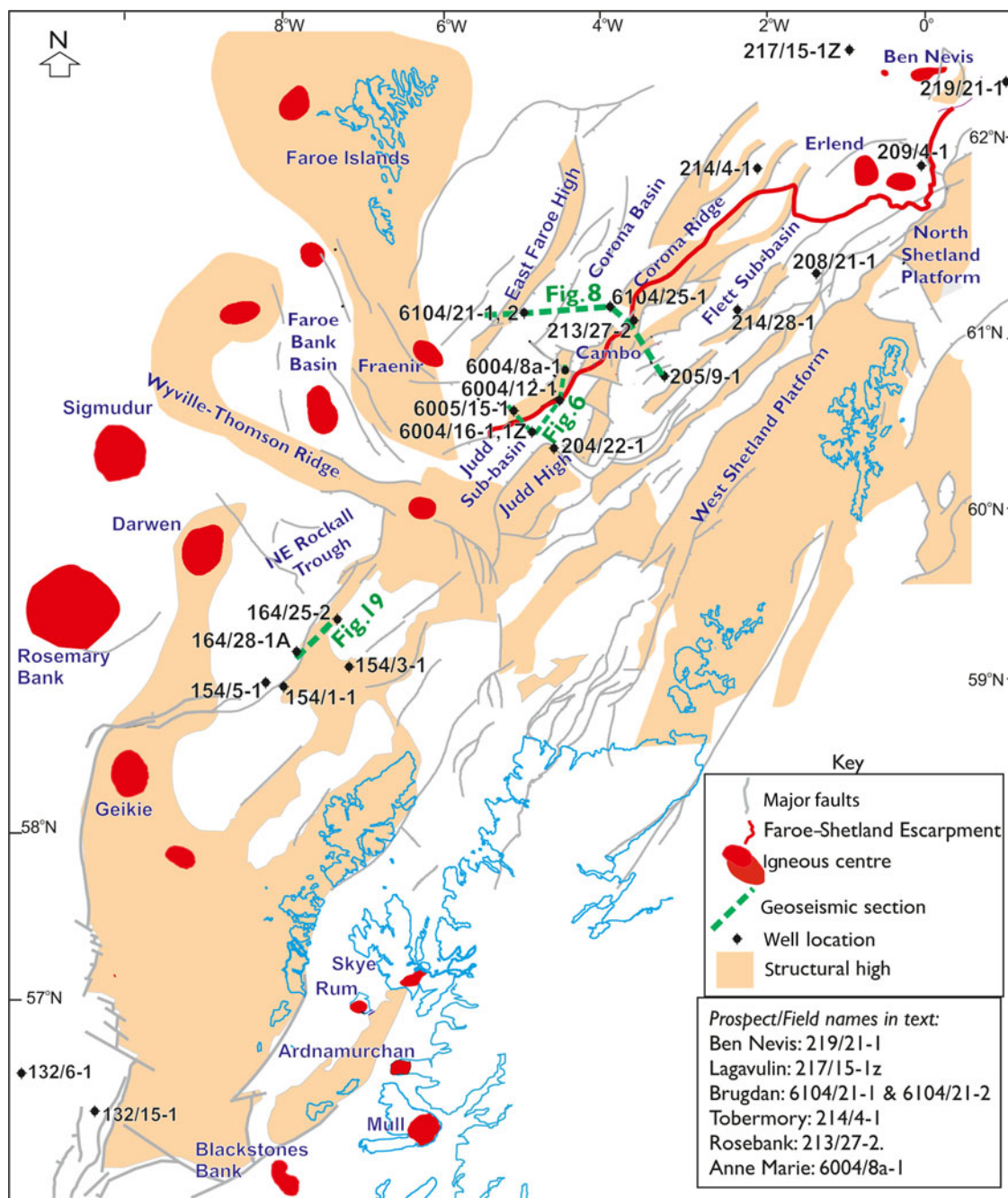


Figure 1 Location map for Rockall and Faroe-Shetland basins. Structural elements adapted from Ellis *et al.* (2009). Location of wells discussed in the text are shown with structural and other significant geological features.

FSB (Watson *et al.* 2017) confirmed the occurrence of these two well-developed tephra phases and extended the onset of the oldest tephra deposits from the Thanetian to the upper Danian.

Constraining the stratigraphical distribution of volcanic and volcanoclastic rocks in the Faroe-Shetland and Rockall basins is fundamental to the understanding of this part of the NE Atlantic margin. Despite this, interpretations of the stratigraphy and distribution of these volcanic rocks have remained ambiguous, both within the basins and within marginal onshore exposed successions such as on the Faroe Islands, East Greenland and the British Palaeogene Igneous Province (BPIP). The stratigraphical relationship of the Faroe Islands Basalt Group (FIBG; Passey & Jolley 2009) to the sedimentary and volcanic rocks of the FSB has been subject to diverging interpretations. These are rooted in the differing stratigraphies, which propose eruptions over a short period between 57.2 Ma and 54.4 Ma (Thanetian-Ypresian; Passey & Jolley 2009; Schofield & Jolley 2013; Ellis &

Stoker 2014), or a longer duration from ~61.5 Ma to 54.4 Ma (Selandian-Ypresian; Waagstein *et al.* 2002; Mudge 2015; Stoker *et al.* 2017; Olavsdottir *et al.* 2019).

Peak extrusive volcanism during the eruption of the FIBG has been linked to uplift and erosion of the southern part of the FSB, leading to the formation of an unconformity. Subsurface mapping has revealed a dendritic drainage system incised into older shelf marine rocks within the Judd Sub-basin (Fig. 1; e.g., Hartley *et al.* 2011), with the surface being marked by a shift from marine to terrestrial sedimentation (Mudge 2015). Termed the Flett Unconformity, this feature has been related to maximum thermal support from the Iceland mantle plume prior to the onset of sea floor spreading (Smallwood & Gill 2002; Shaw Champion *et al.* 2008; Hartley *et al.* 2011; Mudge 2015). However, other authors suggest that this uplift and subsidence can be explained by plate tectonic forces alone (e.g., Stoker *et al.* 2017).

Improvements in sub-basalt geophysical data acquisition and interpretation, allied to an increase in well penetrations, has given new insight into the subsurface stratigraphy within and below the area of thick flood basalts W of the Faroe–Shetland escarpment (Gallagher & Drumgoole 2007; Jerram *et al.* 2009; Wright *et al.* 2012; Schofield & Jolley 2013; McLean *et al.* 2017). In particular, these data and interpretations, such as that of Watson *et al.* (2017), have provided the basis for a revised understanding of the relationship between the volcanoclastic sedimentary rock units and the extensive flood basalt successions (e.g., Naylor *et al.* 1999; Archer *et al.* 2005; Millett *et al.* 2016) within the FSB and Rockall Basin. In particular, the subsurface well and seismic data archive has yielded a record of NAIP volcanism in the context of a > 6 Myr marine basin sedimentary rock record. As this subsurface record is considerably thicker than that preserved in the onshore margins of the NAIP, understanding the stratigraphy and variations in depositional environments of basinal volcano-sedimentary successions has enabled stratigraphical insights into the rifting of the NE Atlantic.

1. FSB pyroclastic and extrusive volcanic record

The main phase of extrusive activity in the NAIP is recorded in the FSB by the extrusion of 40,000 km² of flood basalt lavas (Passey & Jolley 2009), which thin from the >6 km thickness of the FIBG eastwards to a few metres at the edge of the Faroe–Shetland Escarpment. These thick flood basalts have represented a significant challenge to the seismic imaging of intra and sub-basalt strata (e.g., Gallagher & Drumgoole 2007). Despite improvements in sub-basalt geophysical imaging, the difficulties of deepwater exploration including drilling challenges (Millett *et al.* 2016; Watson *et al.* 2017) and the presence of basaltic sill complexes in the sub-basalt sedimentary rock sequences (Schofield *et al.* 2015) have held back exploration to date. In consequence, wells drilled to the E of the Faroe–Shetland Escarpment significantly outnumber those drilled through the thicker flood basalt cover.

The most extensive and youngest of the lava flow fields in the FSB are made up of the FIBG in the W (Passey & Jolley 2009), the exposed part of which is broadly correlative with largely unnamed flow fields on the Corona Ridge and to the NE (Jerram *et al.* 2009; Wright *et al.* 2012; Schofield & Jolley 2013; Millett *et al.* 2017; Hardman *et al.* 2018). Separate monogenetic volcanic centres and associated lava fields in the FSB have been recognised to predate the extensive flood basalt eruptions (Jolley 2009; McLean *et al.* 2017). The extent, stratigraphy, eruption history and depositional environments of volcanic rocks in the FSB have been interpreted from integrated seismic-borehole studies based on industry seismic and well data in the offshore regions (Jolley & Bell 2002; Jolley 2009; Passey & Jolley 2009; Ellis & Stoker 2014). Recently, pre-breakup, syn-breakup and post-breakup tectonic phases have been proposed for the FSB (Stoker *et al.* 2017), and are used here. However, the stratigraphical relationship of the volcanic successions to the sedimentary rock succession in the FSB remains unclear.

1.1. Methods

Understanding of the geology of the volcanic rocks in the Faroe–Shetland and Rockall basins has been aided by data from hydrocarbon exploration within the basin, the stratigraphy having been interpreted from geophysical data and well penetrations. Within wells, stratigraphy has been derived from proprietary microfossil, nannofossil and palynological zonations, which are held to be confidential and, as such, are not used in this analysis. To constrain the strata examined here, we have conducted extensive palynological analysis of well sections and derived a stratigraphical model (Fig. 2) based on the Geomagnetic Polarity Time Scale (GPTS) 2012 and later update (Gradstein *et al.* 2012; Ogg *et al.*

2016). In addition to the palynostratigraphy utilised in Ogg *et al.* (2016), which is derived from Powell (1992), additional datums derived from Ebdon *et al.* (1995), Jolley *et al.* (2005), Jolley & Morton (2007) and Schofield & Jolley (2013) have been included. The palynostratigraphy utilised here is closely similar to published records from the North Sea Basin, where data are more widely available (e.g., Knox & Holloway 1992; Schroder 1992; Jolley 1998; Kender *et al.* 2012), although there are differences in detail. Selected stratigraphically significant species of microplankton and pollen/spores are presented in data plots for the studied well sections. Where appropriate, sum pollen/spore and sum microplankton data are plotted as raw data from standardised preparations. These data are of value in identifying flooding events and constraints on the stratigraphical analysis. Species data are presented as percentages of either microplankton or pollen/spores, as appropriate. In sections where the total counts are highly variable, the data are plotted as square roots to eliminate misleading frequency plots.

The sequence stratigraphical framework erected for the FSB by Ebdon *et al.* (1995) is relatable to the palynostratigraphy used here. Biostratigraphical datums derived from palynomorphs and foraminifera were used by Ebdon *et al.* (1995) to constrain the ages of their unconformity bounded sequences, following the original sequence stratigraphical concept of Posamentier & Vail (1988). This approach has the advantage of emphasising the succession of strata in chronostratigraphically-related sequences. In contrast, a lithostratigraphical approach to basin stratigraphy has inherent pitfalls from diachronous facies.

Wireline data from wells were used in order to appraise the volcanic lithologies encountered within the study wells. A simplified facies scheme is used based on the principles of volcanic wireline analyses (e.g., Planke 1994; Nelson *et al.* 2009; Millett *et al.* 2016). The main interpreted volcanic facies include simple lava, compound lava, hyaloclastite, intrusions, volcanoclastic lithologies and tuffs. No volcanic cuttings analyses (e.g., Millett *et al.* 2014) were undertaken during the current study and so the volcanic lithologies are assigned based on an appraisal of the originally reported wellsite lithologies coupled to an appraisal of the log character.

The stratigraphy used in this study is, where appropriate, compared to radiometric dating of igneous lithologies from the BPIP, published by other authors. It is fortunate that Wilkinson *et al.* (2017) has undertaken an assessment of published NAIP radiometric data. The assessment considered the statistical validity of published radiometric dates, recalculating them based on the new standards of Gradstein *et al.* (2012). These valid ages are considered below and those rejected by Wilkinson *et al.* (2017) are not used. Valid ages with experimental errors of >0.5 Myr are generally not included here, because of the short duration of stratigraphical events. Exceptions are made where no alternative is available. Ages that have no published analytical details are not included – for instance, the radiometric dates for the Skye Western Red Hills Complex and the Ardnamurchan Central Complex (see Emeleus & Bell 2005). Following this approach has meant that some BPIP igneous complexes currently lack valid, published radiometric dates.

The stratigraphy used can be applied to lava flow fields where they include volcanoclastic and siliciclastic sedimentary rock interbeds. While dinocysts and other algae are of stratigraphical value in marine facies, lava field and transitional depositional environments require a combination of this approach with the analysis of pollen and spores derived from higher plants. Pollen and spores dominate terrestrial successions, but are transported in abundance into coeval brackish to fully marine environments. Transportation into the transitional coastal zone was dominated by fluvial taphonomic processes (e.g., Peck 1973). Further transportation of palynofloras into the marine basin was by turbidity currents amplified by the rafting of palynomorphs offshore on

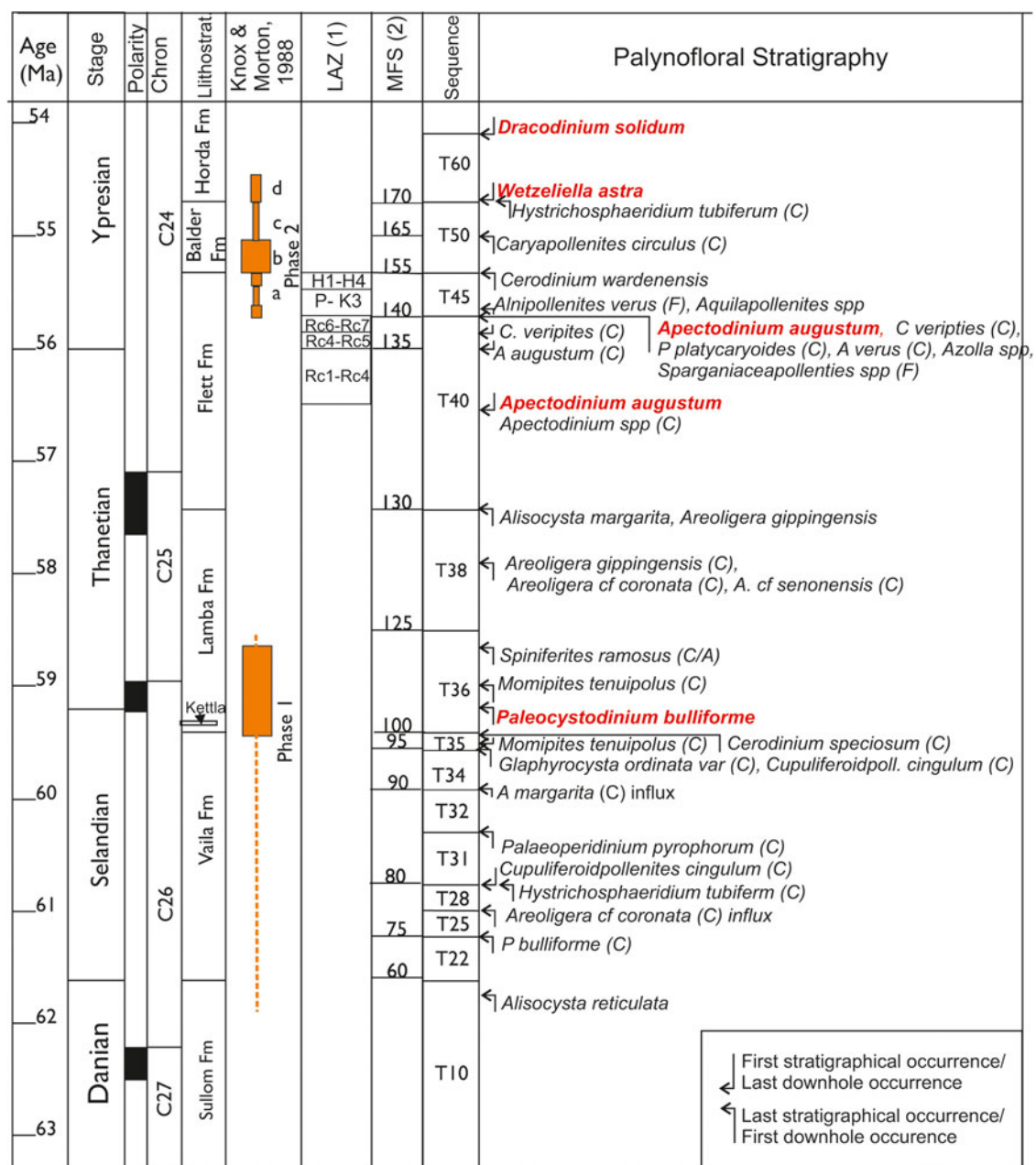


Figure 2 Stratigraphical model based on GPTS 2012 and 2016 (Gradstein *et al.* 2012; Ogg *et al.* 2016). Dinocyst datums in bold red are derived from the GPTS 2016; other dinocyst and pollen/spore records are derived from Ebdon *et al.* (1995) or from regional studies of microplankton distribution (e.g., Mudge & Bujak 2001; Jolley *et al.* 2005). Because of the absence of magnetostratigraphical data for the subsurface FSB, the magnetostratigraphical data are positioned with reference to correlative palynological events in the wider North Sea Basin (Ali & Jolley 1996; Jolley 1998). Phase 1 and Phase 2 North Sea Basin pyroclastic events (Knox & Morton 1988) are shown relative to the stratigraphy of the FSB. Sequences are those of Ebdon *et al.* (1995). Abbreviations: LAZ = local assemblage zone (defined by Schofield & Jolley 2013); MFS = maximum flooding surfaces (defined by Jolley & Morton 2007). Sequences T10 to T60 are those defined by Ebdon *et al.* (1995) for the FSB.

density layers during periods of marine water stratification (e.g., Jolley & Morton 2007). Integration of marine and terrestrial records has consequently allowed correlation across depositional facies.

The samples used in this study were derived from subsurface wells, from which ditch cuttings are the dominant sample type, with some sidewall and conventional core pieces included where available. Because of the potential for downhole cavings in ditch cuttings, the stratigraphy used is primarily based on first downhole occurrences, which mark regional or wider disappearances of species from the stratigraphical record.

Samples for palynological analysis were processed following standard techniques, including hydrofluoric acid digestion, boiling in 20% hydrochloric acid to remove precipitates and oxidation for 5 min in dilute 40% nitric acid where necessary. The

resultant residues were mounted in a permanent petropoxy mounting medium and examined under a transmitted light Olympus BX53 microscope. For each sample, counts of 250 specimens were targeted and the data normalised as percentages of the marine or terrestrial palynoflora. Where full counts were not attained, data were expressed as square roots.

Samples collected for palynology were also analysed for major element geochemistry. In analysing the geochemistry of the sedimentary rocks studied here, two principle techniques were used. Standard X-ray fluorescence (XRF) techniques have been used to analyse the full range of major oxides. Because of the time taken in preparing samples for XRF analysis, and the number of samples for analysis, other samples were subjected to Flame Atomic Absorption Spectrometry (FAAS). These techniques were used and cross-correlated on Columbia River Basalt Province intra-lava

field samples by Jolley *et al.* (2008; and see supplementary material S1 available at <https://doi.org/10.1017/S1755691021000037>).

The primary purpose of collecting XRF and FAAS data was to allow identification of ashfall events and consequent elevated marine macronutrient levels (eutrophication events) in drill cuttings. To allow comparison between major element distribution and the dinocyst record, XRF and FAAS were conducted on the palynological sample set. The stratigraphical distribution of ashfall events in the FSB was recorded by Watson *et al.* (2017), which included some of the same wells analysed here. Plotting of phosphorous pentoxide (P_2O_5):aluminium oxide (Al_2O_3) ratios for key wells was done to identify intervals of elevated nutrient input, moderated against variations in clay input from clastic sources. Gonyaulacoid, autotrophic dinoflagellates can bloom in response to water mass eutrophication, where levels of iron, phosphorus and nitrogen are elevated. Other algae (e.g., diatoms) bloom in response to water mass eutrophication in a similar way, the increase in these prey organisms leading to small-scale blooms of predatory autotrophic dinoflagellates. The palynological data presented here include influxes of taxa, which can be interpreted as eutrophication-driven bloom events. Comparison of these records to major element data allows the identification of increases in macronutrient availability, which is potentially linked to volcanic events.

2. Pre-breakup volcanic activity

Isolated ash deposits have been reported from the periphery of the NAIP (e.g., Svalbard; Jones *et al.* 2017) and the W of Britain (e.g., Ganerød *et al.* 2010), and are attributable to the earliest phase of volcanism beginning in the latest Danian around ca.62 Ma (e.g., Saunders *et al.* 1997; Wilkinson *et al.* 2017). Early ashes are felsic in character (rhyolitic) and their distribution is limited in the offshore basins (e.g., Watson *et al.* 2017). Unlike basaltic ashes, the formation of felsic ashes does not necessarily require major flooding events to promote fragmentation, which contributes to the more limited distribution of the felsic ashes offshore.

In a recent review of pyroclastic deposits of the FSB, Watson *et al.* (2017) noted the occurrence of volcanic ash in marine sedimentary rocks through the Selandian. In particular, tuffaceous units were noted in the upper Selandian, while older Selandian and upper Danian (sequences T10 to T28) records were dismissed as misinterpretations on the basis of a review of petrophysical data (Fig. 2). Wells 6005/15–1, 6004/12–1 and 6004/16–1 were drilled the Danian to Ypresian succession of the Judd Sub-basin, Selandian to Thanetian tephra being noted in 6005/15–1 by Watson *et al.* (2017). $P_2O_5:Al_2O_3$ in shale-dominated ditch cutting samples from well 6005/15–1 (Fig. 3) show a series of high-value peaks in the Selandian to Ypresian. One of the most prominent of these $P_2O_5:Al_2O_3$ peaks is recorded at the Sequence T36 volcanoclastic Kettla Tuff Mb (Fig. 3; and see Watson *et al.* 2017). Importantly, the correlation of the $P_2O_5:Al_2O_3$ peak to the Kettla Tuff Mb indicates that similar peaks in the Selandian to Thanetian interval of all three wells mark basin ashfall events within Selandian sequences T22–T36 (Figs 3–5; supplementary data S1).

Evidence for ashfall events in the latest Danian of the FSB were not supported by Watson *et al.* (2017), who focussed on interpretations made in Naylor *et al.* (1999), linked to wells nearby the Judd and Westray igneous centres. These centres were subsequently identified as being Palaeozoic and Precambrian intrusive rocks. Occurrences of volcanoclastic material in Sequence T22 was noted by Watson *et al.* (2017), an observation supported here from major element analysis, also from well 6004/16–1z (Fig. 4). A comparable record of tephra was recorded at 22.7 m below surface by Morton *et al.* (1988) from a shallow

British Geological Survey borehole (82/12) drilled in the Papa Basin. The original palynological analysis attributed a Danian age to the single tephra horizon recorded; re-examination here of the palynofloras from core samples recovered abundant *Palaeoperidinium pyrophorum*, common specimens of *Palaeocystodinium bulliforme* and *Isalbelladinium? viborgense* from 22.70 m. These occurrences indicate an age equivalent to Sequence T22 (Fig. 2). In contrast to the Sequence T22 tephra recovered from well 6004/16–1z, which is of andesitic composition (Watson *et al.* 2017), Morton *et al.* (1988) reported that the 82/12 tephra was tholeiitic, supporting multiple small-scale sources for these lower Selandian volcanics.

Geochemical analysis of cuttings from the Danian was not undertaken. However, examination of fresh ditch cuttings from well 6004/16–1z indicated that traces of tephra were visible within the Sequence T10 sediments, although this is not detectable petrophysically (Watson *et al.* 2017). The older Danian record of volcanism in the FSB remains equivocal. This is due to the low frequency of well penetrations of the deeper Palaeocene, and to the difficulties in identifying isolated tephra in ditch cuttings without supporting geochemical analyses.

Major element analysis of Judd Sub-basin wells has identified occurrences of tephra in Selandian sequences T32, T34 and T35 (Figs 2–5). These tephra predate the prominent Kettla Tuff Mb, which occurs in Sequence T36. Interpretation of geophysical data illustrates that these tephra horizons are correlative (Figs 3–7), with the greatest concentration in sequences T34–T35. A notable aspect of the Selandian tephra record is the absence of any tephra events in the interval within Sequence T25 to Sequence T31. Previous records of tephra from sequences T25 and T28 (Sørensen 2003; Stoker & Varming 2011) have already been disputed by Watson *et al.* (2017) on petrophysical grounds. The major element analysis here does not support the occurrence of tephra in this interval, or in overlying Sequence T31.

The source of these Selandian tephra has been subject to some debate, rooted in difficulties in correlating their thin, discontinuous record. They are considered unlikely to have been sourced from the BPIP onshore volcanic centres (Morton *et al.* 1988; Watson *et al.* 2017), because the high-titanium tholeiitic geochemistry of the tephra has few comparable sources in the onshore record. Taken together with the timing of the FIBG eruption (Morton *et al.* 1988; Jolley & Bell 2002; Passey & Jolley 2009; Ellis & Stoker 2014), this has been used to suggest an undetermined NE Atlantic source. On the East Faroe High (Fig. 1), well 6104/21–2 penetrated around 30 m of heavily sill-intruded, quartz-free volcanoclastic sandstone within Sequence T35 (Fig. 8). These sedimentary rocks were reported by Watson *et al.* (2017) to contain a terrestrial palynoflora of the ‘westerly sourced’ type of Jolley & Morton (2007), leading them to suggest a derivation from the WSW originating in the Munkegrunnar Volcanic Province, in particular the Fraenir Volcanic Centre (Fig. 1). While this is a possible source, interpretation of seismic data for this study (Fig. 9) has indicated the presence of a thick package of currently undrilled volcanic or volcanoclastic rocks to the NW of the East Faroe High, which appears to be within the interval sequence T31–T36. The presence of this unit points to an unrecognised pre-breakup extrusive volcanic succession underlying the exposed FIBG.

2.1. Kettla Tuff Mb, Sequence T36

In contrast to the limited extent of the tephra units of sequences T10–T35, the Kettla Tuff Mb is widespread and readily identified from wireline log and lithological data, being composed of mixed siliciclastic and volcanoclastic sediment (Eidesgaard & Ziska 2015). In contrast to the majority of the tephra reported from younger sequences T40 to T50, Watson *et al.* (2017)

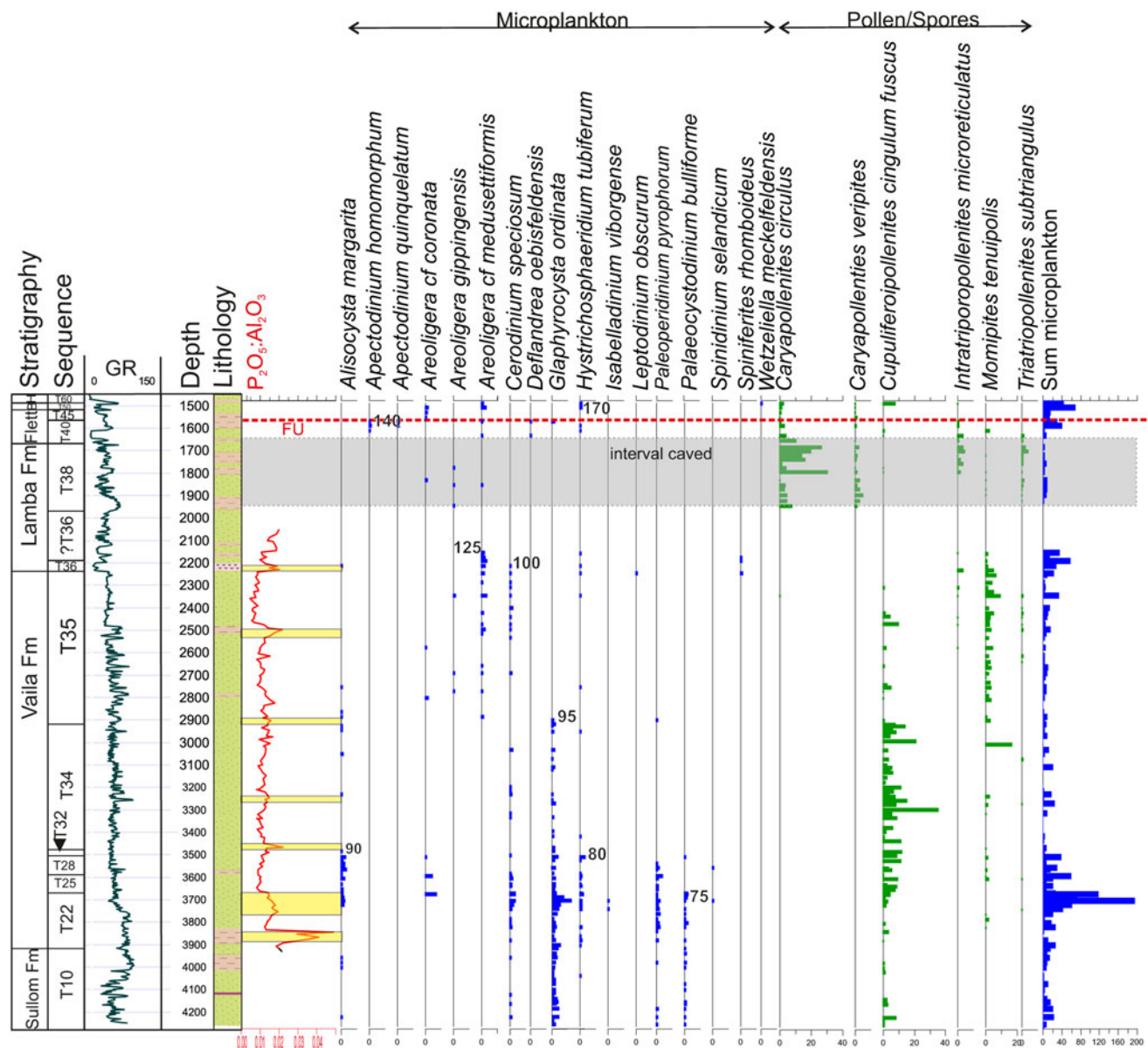


Figure 4 6004/16–1 Marjun: although the Flett Unconformity is identified by the absence of oldest Sequence T45 strata, cavings and potential confusion over drilling returns affect sample quality downhole to within Sequence T38. Below this, this deep well has a record of pre-breakup volcanism extending down into Sequence T22 and potentially Sequence T10. $P_2O_5:Al_2O_3$ identify tephra in sequence T22, T32–T36. All palynomorph data displayed as square roots; only stratigraphically significant taxa are displayed.

stratigraphical occurrence marks the top of the Lamba Formation/Sequence T38 across the FSB and its correlative equivalent in the North Sea Basin (Ebdon *et al.* 1995; Mudge & Bujak 2001). Subsequent influxes of *Areoligera cf. coronata*, *Spiniferites ramosus ramosus* and *Momipites tenuipolus* confirm the extent of the Lamba Formation.

As with many other sub-lava field sedimentary rock sequences (Schofield *et al.* 2015; Angkasa *et al.* 2017), those of the Brugdan prospect area are intruded by numerous basaltic sills, identifiable from wireline log data by their high velocity, low gamma and sharp upper and lower margins, often resulting in box-like log profiles (e.g., Planke *et al.* 1999; Figs 8, 11). These intrusions were emplaced into marine claystones, which include the volcanoclastic sandstones of the Kettle Tuff Mb (Fig. 8), which reaches >10 m thickness based on wireline log response. The palynoflora associated with the lower Sequence T36 interval containing the Kettle Tuff Mb in well 6104/21–2 is of shallow marine shelf composition, which, taken together with the well location being outside the depocentres proposed for the Kettle Tuff Mb by Watson *et al.* (2017), again supports a more localised source.

Further sources on the Corona Ridge were proposed as the origin of the volcanoclastic and tuffaceous elements of the local Kettle Tuff Mb (Eidesgaard & Ziska 2015), although this was questioned by Watson *et al.* (2017) on the basis of the lack of volcanic rock penetrations of Thanetian age on the Corona Ridge and failure to identify a source on seismic data. However, multiple sources were favoured by Watson *et al.* (2017) to explain variable thickness of the Kettle Tuff Mb in each of the three depocentres they proposed for the FSB. These depocentres do not in themselves provide evidence for multiple eruptive centres for the Kettle Tuff Mb. Their location correlates with three of the four main sedimentary provenance zones (Fig. 12) of Jolley & Morton (2007), representing sedimentary basins into which both direct and remobilised ash would have been accumulated.

2.2. Extrusive volcanism of Sequence T36

Alongside the Kettle Tuff Mb record of pyroclastic volcanic eruptions in the earliest Thanetian sedimentary rocks of the FSB, are relatively small subsurface lava fields of the same age.

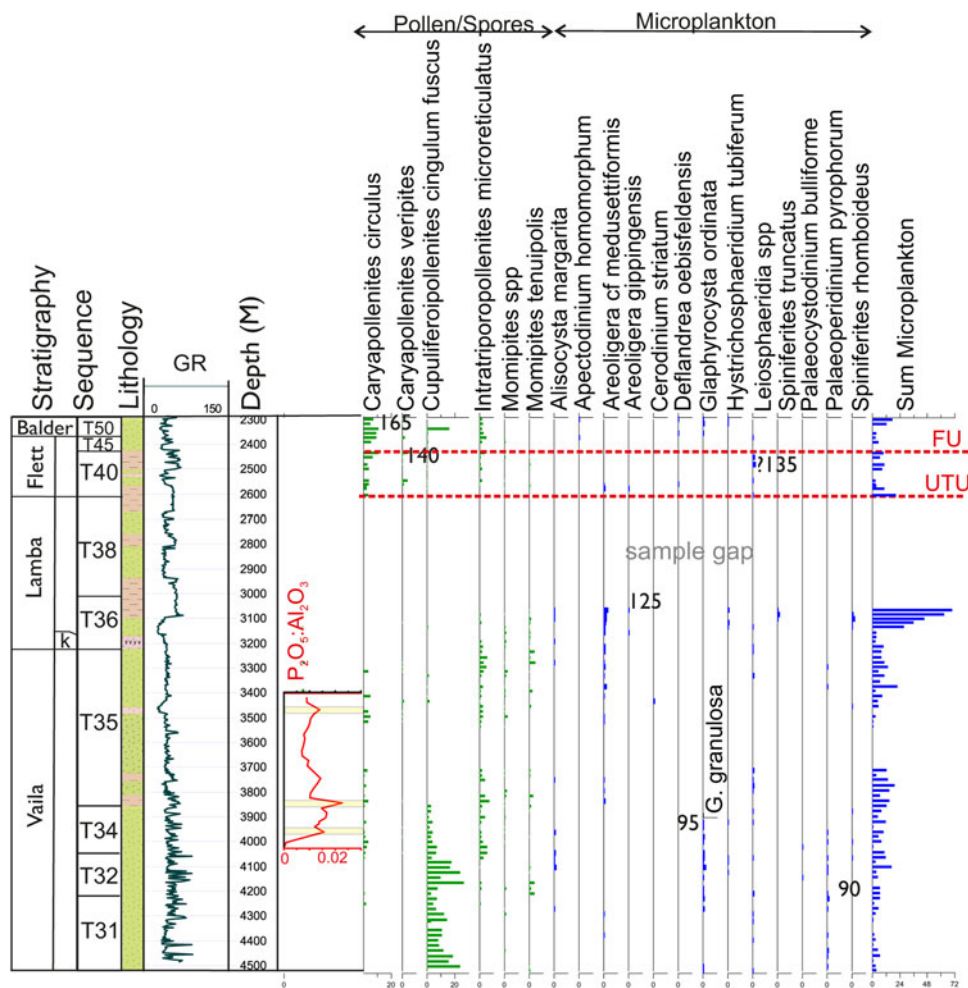


Figure 5 6004/12-1 Svinoy: no extrusive volcanics were present in this well other than the dispersed ash of the Kettla Tuff Mb and those identified from major element ratios. These data were derived from XRF analysis of ditch cutting samples (supplementary data S1), the $P_2O_5:Al_2O_3$ highlighting the presence of tephra in sequences T35 and T34, which are correlative with those recorded in 6005/15-1. Both the Flett Unconformity and the Upper Thanetian Unconformity are present in the well, with oldest Sequence T40 and oldest Sequence T45 strata being absent. All palynomorph data displayed as square roots; only stratigraphically significant taxa are displayed.

In the N of the FSB, well analysis and seismic interpretation of the Lagavulin prospect area (Fig. 1) recorded an extensive, syn-breakup lava field (Millett *et al.* 2016). Penetrated by well 217/15-1Z, subsequent analysis of geophysical and biostratigraphical data (Jolley 2009; McLean *et al.* 2017) demonstrated that this lava field overlapped onto an uplifted and eroded upper Selandian to lower Thanetian (Sequence T36) lava field, previously drilled by Ben Nevis prospect well 219/21-1 (Fig. 1). Although the size of the lava field has not been fully assessed to date (McLean *et al.* 2017), increased sub-volcanic temperatures (based on vitrinite reflectance; Rohrman 2007) have been inferred to relate to the intrusion of a deep-seated laccolith of the order of 10's km in width. This intrusion is suggested to have influenced the apparent asymmetry of the Ben Nevis edifice, which was a potential source of the Kettla Tuff Mb in the N of the FSB (northern depocentre of Watson *et al.* 2017; Fig. 12).

Further evidence of a small, localised source for some of the lower Thanetian Kettla Tuff Mb volcanoclastic rocks was presented by Schofield *et al.* (2015), following the identification of a small subaerial lava field penetrated in Flett Sub-basin well 208/21-1 (Fig. 1). Sourced from fissures along the crest of a tilted fault block, the lava field extends for <10 km downdip. As with the coeval Ben Nevis lava field, an extensive FSSC magma plumbing system occurred beneath the extruded volcanics. A third example of a Sequence T36 extrusive lava field has been recorded in Corona Ridge well 6004/8a-1 (Figs 1, 6). Resting

on Selandian marine siliciclastic sediments, lava flows are succeeded and interbedded with volcanoclastic sediment deposited in a shallow marine environment. The ditch cuttings recovered from this well were of poor quality, with pervasive cavings, limiting further stratigraphical interpretation and inhibiting a robust environmental interpretation.

There are currently no convincing records of extrusive volcanic rocks or tephra in Thanetian upper Sequence T36 and Sequence T38. A report of a Sequence T38 tuff in well 204/22-1 by Watson *et al.* (2017) identified a potentially thick volcanoclastic sandstone unit stratigraphically younger than other Lamba Formation records. The age of this unit was defined by biostratigraphy available at the time, which gave a range equal to sequences T36-T40. This was supported by the interpretation of the Sequence T36 upper surface from seismic data. New palynological data from wells 204/22-1 and 204/22-2 allied to wireline responses and seismic interpretation shows that the volcanoclastic sandstone forms part of an expanded Sequence T36 succession, composed of seaward dipping clinoforms. Palynofloras from this interval are characterised by a dominance of transported shallow marine and terrestrial taxa. The Kettla Tuff Mb and overlying prograding marine sediments that comprise Sequence T36 thin downslope from >150 m thickness to a ~40-m-thick sequence of shelf claystones (see supplementary data S2). This prograding post-Kettla Tuff Mb volcanoclastic unit remains equivocal. It either demonstrates that lower Thanetian volcanism in the FSB did not cease with the eruption of the

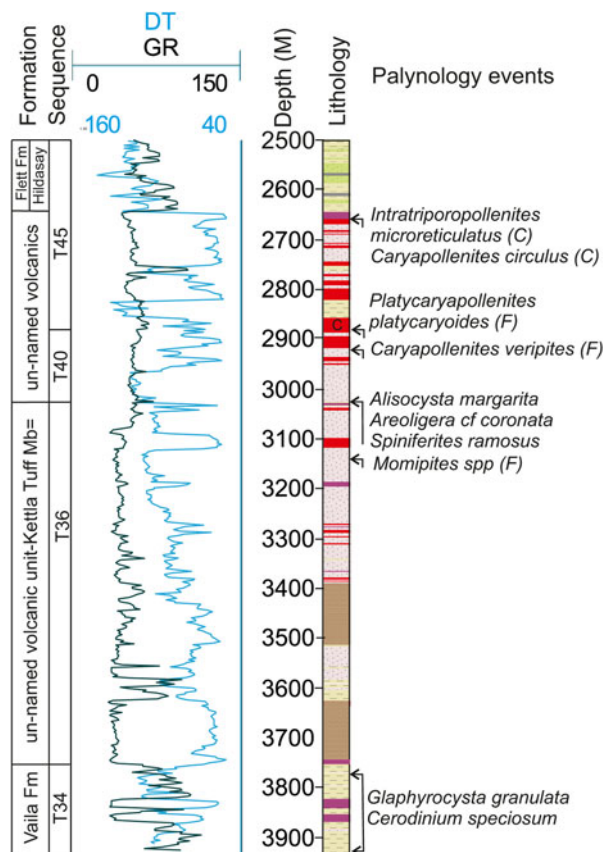


Figure 6 6004/8a-1 Anne Marie: because of drilling problems, samples from this well are dominated by cavings making presentation of the quantitative palynological data irrelevant. The qualitative data presented here help identify the presence of lava fields of both Sequence T36 and sequences T40–T45. Sequence T40 may extend further uphole, but is tied to the first downhole occurrence of frequent *Platycaryapollenites platycaryoides* and *Caryapollenites veripites*. Note that Sequence T34 is represented by Vailla Formation siliciclastic sedimentary rocks with minor intrusions.

Kettla Tuff Mb, or it marks erosion of the Kettla Tuff Mb on the updip shelf during upper Sequence T36 progradation.

3. Syn-breakup volcanic activity

Extensive, dominantly basaltic ash deposits across the NE Atlantic margin have been associated with the flooding of the NE Atlantic rift and the onset of ocean crust emplacement (Saunders *et al.* 1997; Jolley & Widdowson 2005; Watson *et al.* 2017). Reaching a maximum abundance within the transgressive marine sediments of the Balder Formation (Fig. 2), Knox & Morton (1988) attributed concentrations of pyroclastic ashes within the earliest Eocene of the North Sea Basin to their Phase 2 event. Within the FSB, Phase 2 pyroclastic activity has been recorded from within the oldest part of the Flett Formation, the overlying Balder Formation to within the Horda Formation (sequences T40–T60 of Ebdon *et al.* 1995; see Fig. 2) by Ritchie *et al.* (2011). The Phase 2 pyroclastic record of the North Sea extends east down the prevailing NW wind direction (Knox & Morton 1988) into Denmark and southeastern England (e.g., Heilmann-Clausen 1985; Jolley 1996), indicating phreatomagmatic eruptions during the period ~57–54.5 Ma. A comparable distribution pattern for the older Flett Formation (sequences T40 and T45) pyroclastic deposits within the Faroe–Shetland, Rockall and North Sea basins and in Denmark (e.g., Heilmann-Clausen 1985) indicates that phreatomagmatic activity associated with the nascent NE Atlantic Rift began as early as 56.5 Ma.

3.1. Onset of syn-breakup volcanism

Subsurface drilling within the FSB has encountered widespread extrusive volcanism, which is bracketed by, or interdigitated with, marine sediments of upper Thanetian to lower Ypresian age. Many of the wells in the region record penetrations of lava fields erupted during Sequence T40 (Ebdon *et al.* 1995; Fig. 2). These include multiple shield and fissure lava fields of the exposed Beinissvørð Formation of the FIBG (Passey & Jolley 2009), localised, largely fissure fed lava fields on the Corona Ridge (Schofield & Jolley 2013; Hardman *et al.* 2017) and the thick lava packages of the NE FSB encountered at the 217/15–1Z Lagavulin well (Millett *et al.* 2016; Fig. 13). The extensive lava fields in the W of the FSB initiated within Sequence T40 (Ebdon *et al.* 1995) and are broadly coeval, with the oldest evidence for pyroclastic Phase 2 (Knox & Morton 1988; Jolley 2009; Passey & Jolley 2009; Schofield & Jolley 2013).

3.1.1. East Faroe High. The thickest subsurface succession of Sequence T40 lavas was drilled by two wells on the Brugdan prospect at the edge of the East Faroe High (Figs 1, 8, 11). The two wells are immediately adjacent to each other following technical difficulties with the first drilled, 6104/21–1. Penetrating the 2.5 km of FIBG volcanic rocks adjacent to the East Faroe High, well 6104/21–1 (Fig. 11) reached terminal depth (TD) at 4225 m. Underlying the FIBG lava field were mid-shelf marine shales and sandstones. These are attributed to the Selandian to Thanetian uppermost Vailla and Lamba formations and have been extensively intruded by dolerite sills (Ellis & Stoker 2014; Figs 8, 11). Samples from these shales yielded the dinocysts *Al. margarita* and *Areoligera gippingensis*, taxa characteristic of Thanetian shelf open-circulation marine sediments of sequences T35–T38 (Figs 2, 8, 11).

In these wells, the overlying FIBG volcanic succession is composed of hyaloclastite breccias and basaltic lavas with interbedded sedimentary rock units. In 6104/21–1, between 2200 m and 3050 m the volcanic succession contains occurrences of the dinocysts *Apectodinium parvum*, *Apectodinium homomorphum*, *Apectodinium summissum*, *Deflandrea oebisfeldensis* and frequent occurrences of the angiosperm pollen *Caryapollenites veripites* and *Alnipollenites verus*, indicating attribution to the upper part of Sequence T40 (Schofield & Jolley 2013; Fig. 2). Closely similar terrestrially derived palynofloras have been recorded from the upper Forties Mb, Sele Formation of the North Sea (Schroder 1992; Kender *et al.* 2012), a deposit of equivalent age. Here the event has a first-order correlation with the recovery phase of the Paleocene-Eocene-Thermal-Maximum (PETM) Carbon-13 ($\delta_{13}C$) excursion (Kender *et al.* 2012; Eldrett *et al.* 2015).

Within the Sequence T40 interval of well 6104/21–1 (Fig. 11), there is evidence for progradation of hyaloclastite deltas passing up into emergent lava fields in two major cycles. The emergent lava field stage of each cycle was locally submerged by a rise in relative sea level, marked by an influx of dinocysts and other algae during a maximum flooding event. Interaction between the changes in relative sea level and lava field progradation have been recorded in the FIBG (Passey & Jolley 2009; Jolley *et al.* 2012; Wright *et al.* 2012). Their occurrence in the East Faroe High area indicates that overall subsidence caused the lava field to remain at near sea level throughout eruption.

Repeated cycles of eruption are also recorded in hyaloclastite delta and lava field prograding successions within Sequence T40 in well 217/15–1z (Millett *et al.* 2016; Fig. 13). The dominantly volcanic and volcanoclastic succession penetrated in the 217/15–1z well yielded limited palynofloras because of the proximal volcanic depositional system. However, the co-occurrence of common *A. verus* and *Cupuliferoidaepollenites liblarensis* above 2620 m indicates attribution to Sequence T40 (Fig. 2; McLean *et al.* 2017).

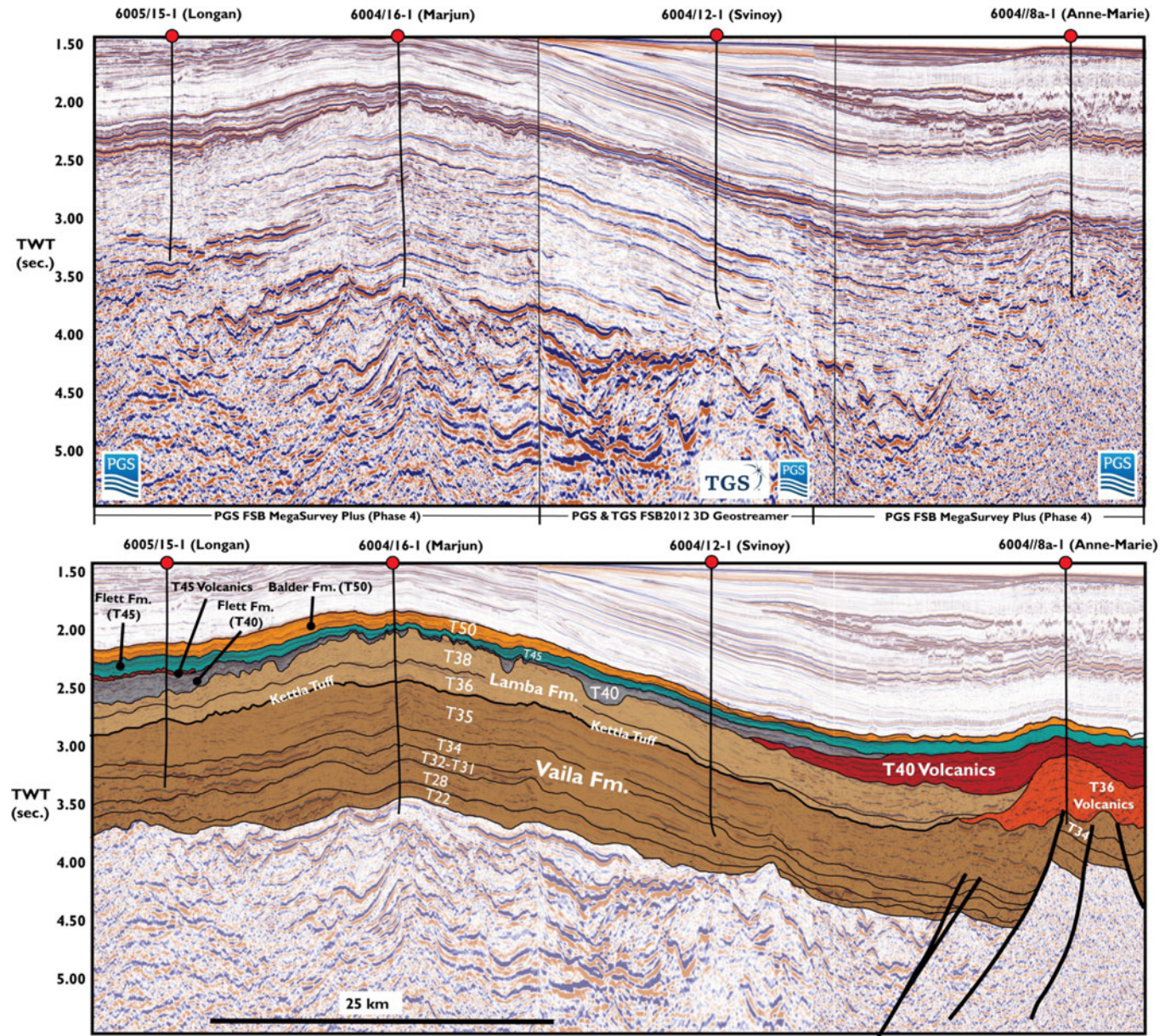


Figure 7 Geoseismic interpretation W to E across the FSB through 6005/15–1 Longan (see Fig. 3), 6004/16–1 Marjun (see Fig. 4), 6004/12–1 Svinoy (Fig. 5) and 6004/8a-1 Anne Marie (Fig. 6). Note the small Sequence T36 lava field on the upfaulted block (Anne Marie). Evidence for the Mid Palaeocene Unconformity (Stoker *et al.* 2017) is given by the Anne Marie Sequence T36 lava field overlying Sequence T34 marine sedimentary rocks. This indicates t uplift prior to or during Sequence T35 on this eastern flank of the basin. The deeply incised surface of the Lamba Formation at the Upper Thanetian Unconformity has the lows filled by ‘mini-basins’ of Sequence T40 sedimentary strata. These are later eroded by the lower magnitude Flett Unconformity, whose irregular surface is overlain by strata from the upper part of Sequence T45. TWT: two way time.

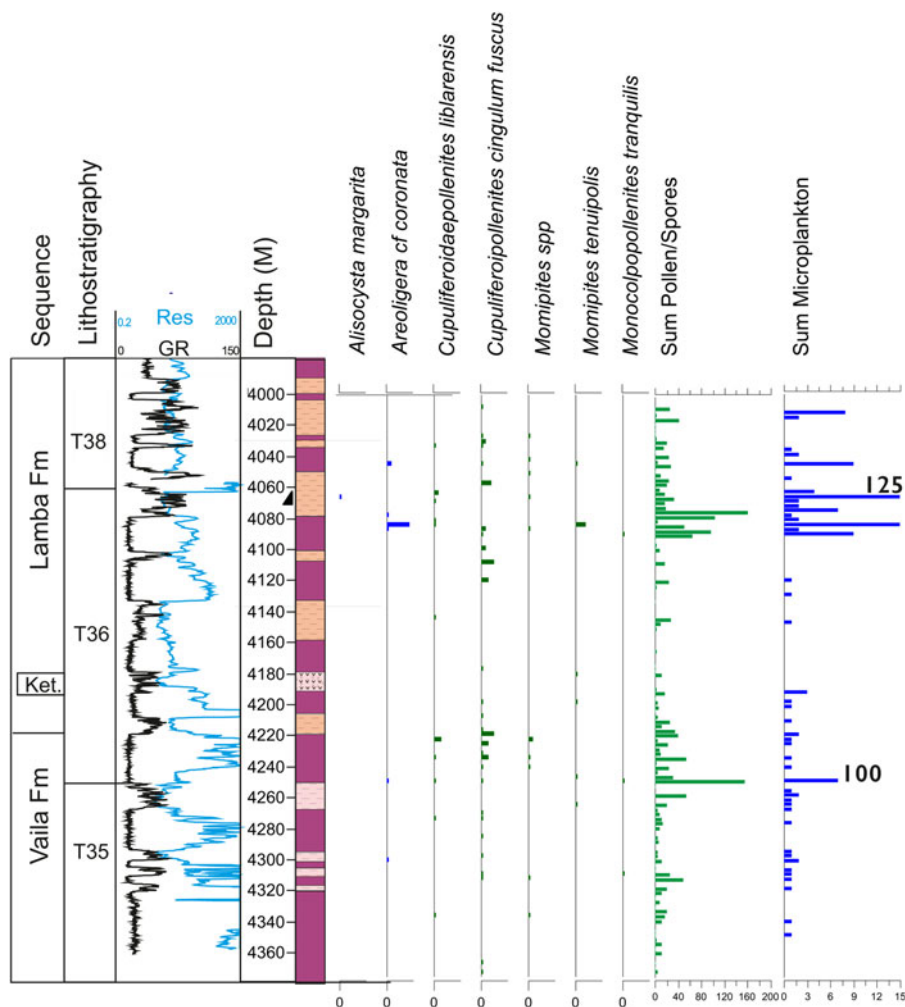


Figure 8 Brugdan 6104/21–2. Both the Lamba and Vaia formations are extensively intruded with sills. Palynomorphs recovered from intervals of these sills are cavings from the overlying sedimentary rocks and reflect the difficulties in drilling such variably resistant strata. Identified from its log signal and from examination of the ditch cuttings, the volcanoclastic Kettla Tuff Mb (Ket.) occurs near the base of the Lamba Fm (Sequence T36). Within the FSB, this lower Lamba Formation interval is marked by frequent to common *Momipites* and *Cupuliferoipollenites* species, the base of which is used to determine the oldest Sequence T36 sediments in this well. Stratigraphically significant species palynomorph data are displayed as square root values. In samples with highly variable individual counts, presented data as percentages would be misleading. Sum pollen/spores and sum microplankton are plotted as standardised counts and demonstrate variable recovery in this succession.

3.1.2. Corona Ridge. The thick FIBG flood basalt lava fields attributed to Sequence T40 extend eastwards towards the Corona Ridge. There are few well penetrations in this area, but 6104/25–1 (Sula Stelkur; Fig. 14) W of the Corona Ridge recorded hyaloclastite breccias overlain by volcanoclastic sediments above TD. These strata contain occurrences of *Apectodinium* species, abundant *Platycaryapollenites platycaryoides* and common *C. veripites*, indicating attribution to the earliest Ypresian interval of Sequence T40 (Fig. 2). The lack of deeper well penetrations in this area and the difficulties of seismic interpretation in thick basalt successions leave a question over the facies of the undrilled thick volcanic succession below TD. However, geoseismic interpretation (Fig. 7) and evidence from the thickness of Sequence T40 volcanic successions on the adjacent Corona Ridge (Schofield & Jolley 2013) indicate that the Sequence T40 volcanoclastic rocks in 6104/25–1 were probably the south-eastern prograding volcanoclastic margin of the FIBG.

On the Corona Ridge, multiple well penetrations around the Rosebank, Cambo and Tobermory fields (Fig. 1) have yielded stratigraphical and depositional facies data that have been integrated with seismic interpretation (Schofield & Jolley 2013; Hardman *et al.* 2017, 2018; Watson *et al.* 2017). Lava flow fields and associated volcanoclastic sediments of Sequence T40 (Schofield & Jolley 2013) are interbedded with siliciclastic sedimentary

rocks deposited by the Flett Delta system, termed the Colsay Mb (Hardman *et al.* 2017). These rocks were deposited in fluvial floodplain, estuarine and shelf marine facies yielding diverse pollen/spore and microplankton palynofloras (Fig. 15). The oldest Sequence T40 rocks drilled in Rosebank Field well 213/27–2, the volcanoclastic sedimentary rocks of Colsay 4 (Helland-Hansen 2009; Poppitt *et al.* 2018), rest unconformably on argillaceous marine sedimentary rocks of the Thanetian Lamba Formation. These are characterised by abundant occurrences of the dinocyst *Alisocysta margarita* (Figs 2, 15). The abundant occurrences of the PETM proxy (Crouch *et al.* 2003) dinocyst *Apectodinium augustum* within Colsay 3 and in interbeds within the Rosebank Lower Volcanics (Schofield & Jolley 2013; Fig. 14), confirm the stratigraphical relationship of these strata to the PETM carbon isotope excursion (CIE). The subsequent post-CIE recovery is recorded in Sequence T40, upper Colsay 3 sedimentary rocks, but is truncated by the Flett regional unconformity (e.g., Shaw Champion *et al.* 2008). This interval from uppermost Colsay 3 to the Sequence T40–Sequence T45 boundary within Colsay 1 is characterised by common *C. veripites* and *P. platycaryoides* pollen. The upper part of this interval also contains common occurrences of *Azolla massulae* and *Sparangiaceapollenites magnoides*, both derived from aquatic/aquatic marginal plant taxa, reflecting high moisture availability

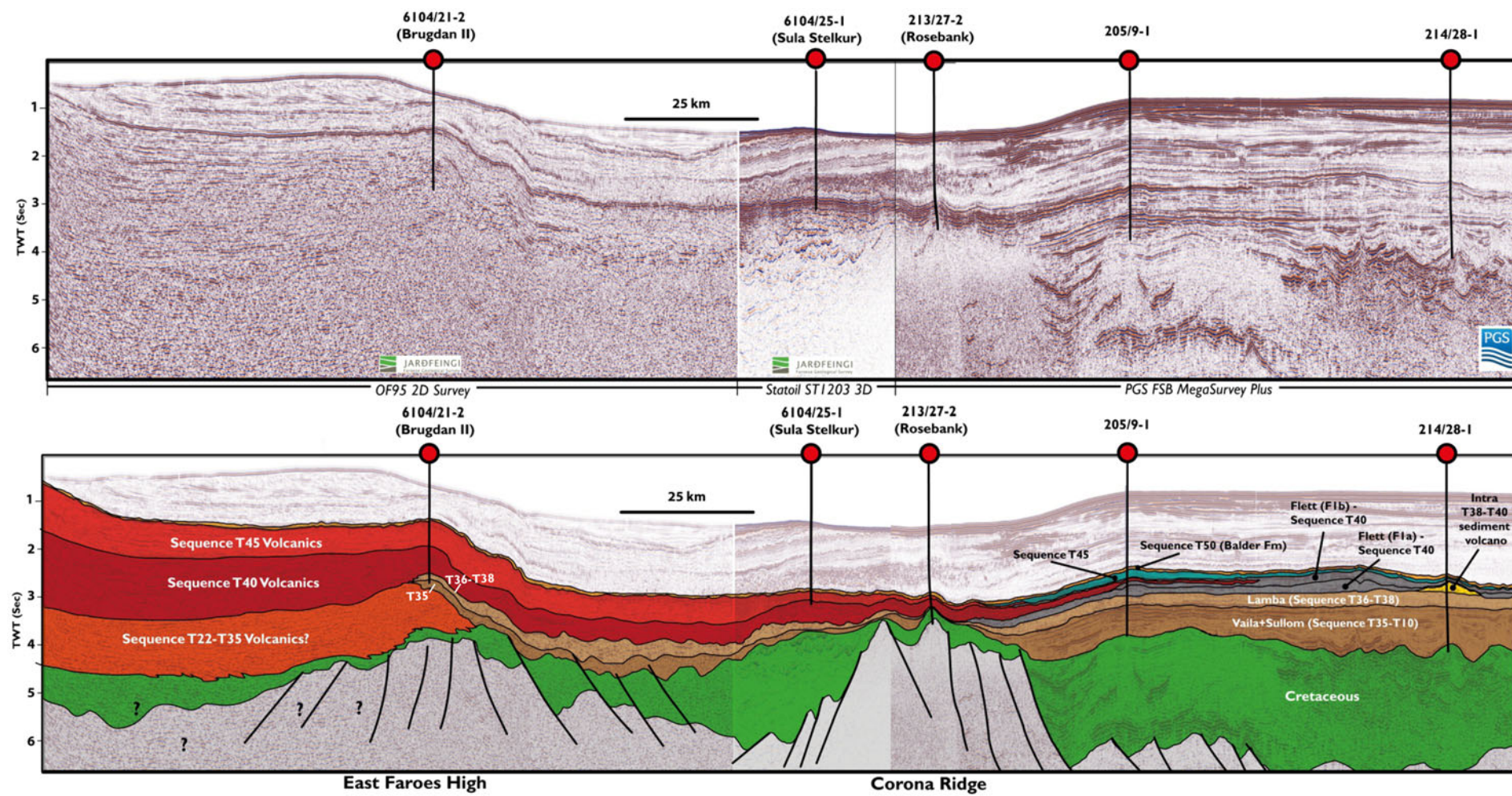


Figure 9 Geoseismic section from the East Faroe High to the Corona Ridge through wells 6104/21–1 Brugdan 2 (Fig. 8), 6104/25–1 Sula Stelkur (Fig. 14), 213/27–2 Rosebank (Fig. 15), 205/9–1 (Fig. 10) and 214/28–1 (Fig. 16). Of particular note is the occurrence of Lamba and Vailla formations (Selandian–lower Thanetian) sedimentary rocks underneath the thick Sequence T40 volcanic rocks (upper Thanetian to lower Ypresian) in the W. A potential Sequence T36 to Sequence T35 or older volcanic or volcanoclastic deposit is interpreted on this line. The occurrence of Selandian volcanoclastic sediment in well 6104/21–2 provides evidence of active volcanism NW of the East Faroe High and potentially under the Faroe Islands. TWT: two way time.

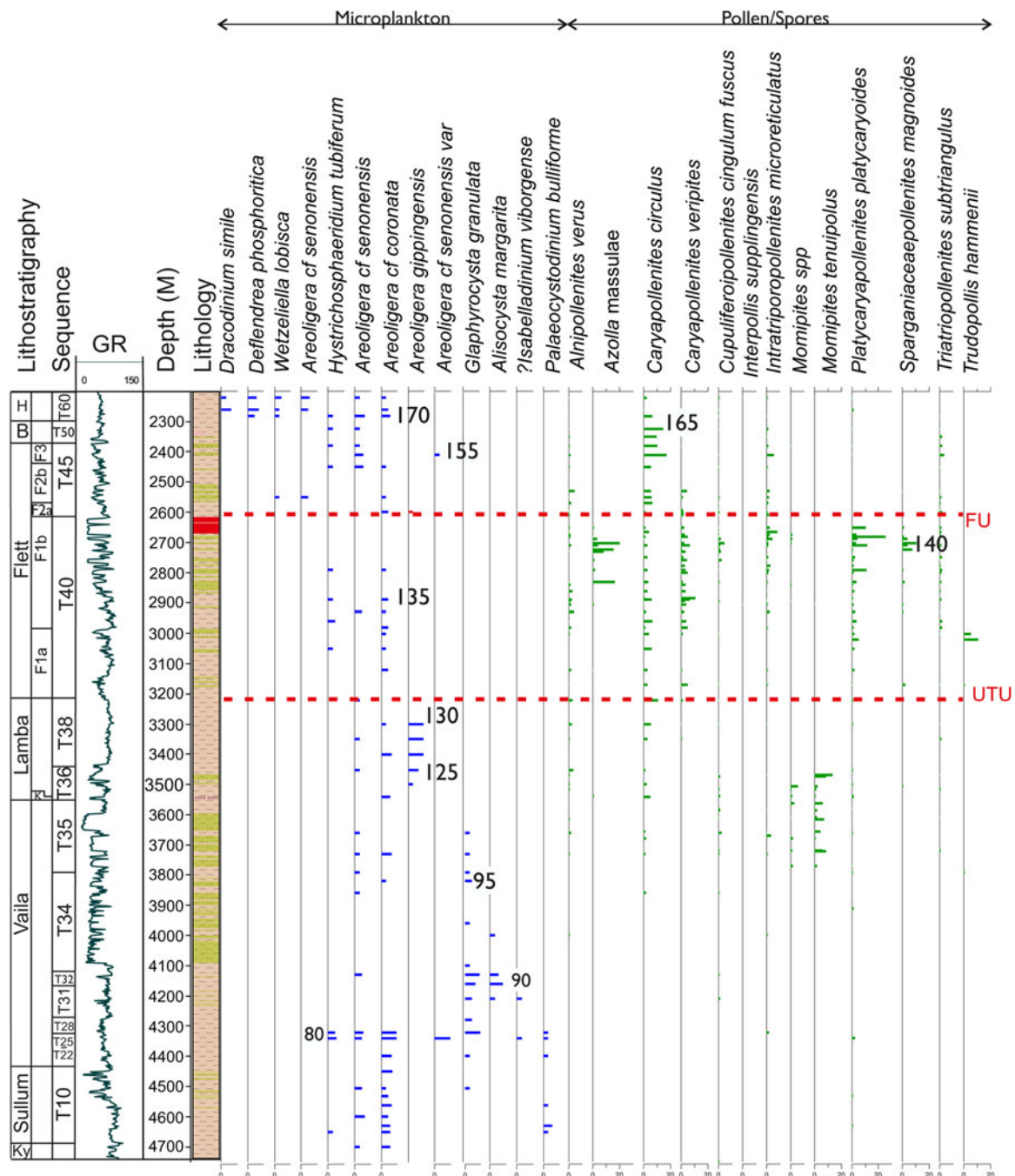


Figure 10 Well 205/9-1. This well contains an extensive sequence from the K/Pg boundary to the Early Eocene. It penetrated two notable volcanic intervals, the Kettla Tuff Mb in Sequence T36 and a small lava flow field in the upper part of Sequence T40. The occurrence of common *Momipites tenuipolus* within Sequence T36 and upper Sequence T35 is widespread in the FSB and is recorded in equivalent Thanet Sands Formation strata in southeastern England (Jolley 1998) sedimentary rocks that contain disseminated degraded volcanic ash. All palynomorph data displayed as square roots because of variable sample counts and to limit the physical width of the plot. Only stratigraphically significant taxa are displayed.

during deposition of upper Flett Formation Unit F1b. This assemblage has been recorded within the post-PETM recovery stage and is correlative with the uppermost units of the Forties Mb, North Sea Basin (e.g., Kender *et al.* 2012).

Regionally, the unconformity between the Lamba Formation marine shales and the overlying volcanoclastic and siliciclastic sediments of the Flett Formation is marked by a pronounced lithological and palynofacies change. In the offshore record, structured organic (pollen/spores and algae), vitrinite and abundant amorphous organic kerogen characterise the lower Flett Formation. These assemblages contrast with those of the Lamba Formation, which has low diversity/high dominance pollen and spore floras, rich dinocyst-dominated microplankton floras and inertinite-rich kerogen. This abrupt change is a

consequence of uplift and erosion across the basin at the Sequence T38/Sequence T40 boundary. It is coincidental with, or rapidly followed by, initiation of flood basalt eruption (Fig. 7). The correlative unconformity, also marked by a basinward shift in facies, is seen on the western margin of the North Atlantic rift in E Greenland (Jolley & Whitham 2004; Parsons *et al.* 2017).

3.1.3. Flett Sub-basin. Within this dominantly marine sedimentary basin, the sea floor vent system drilled in well 214/28-1 is of particular interest (Fig. 16). Originating as from a deeper intrusive sill complex, the vent formed on the sea floor at the unconformity between Sequence T38 and Sequence T40 (Schofield *et al.* 2015). Vent formation was immediately predated by the intrusion of a sill complex. The sill complex induced a forced

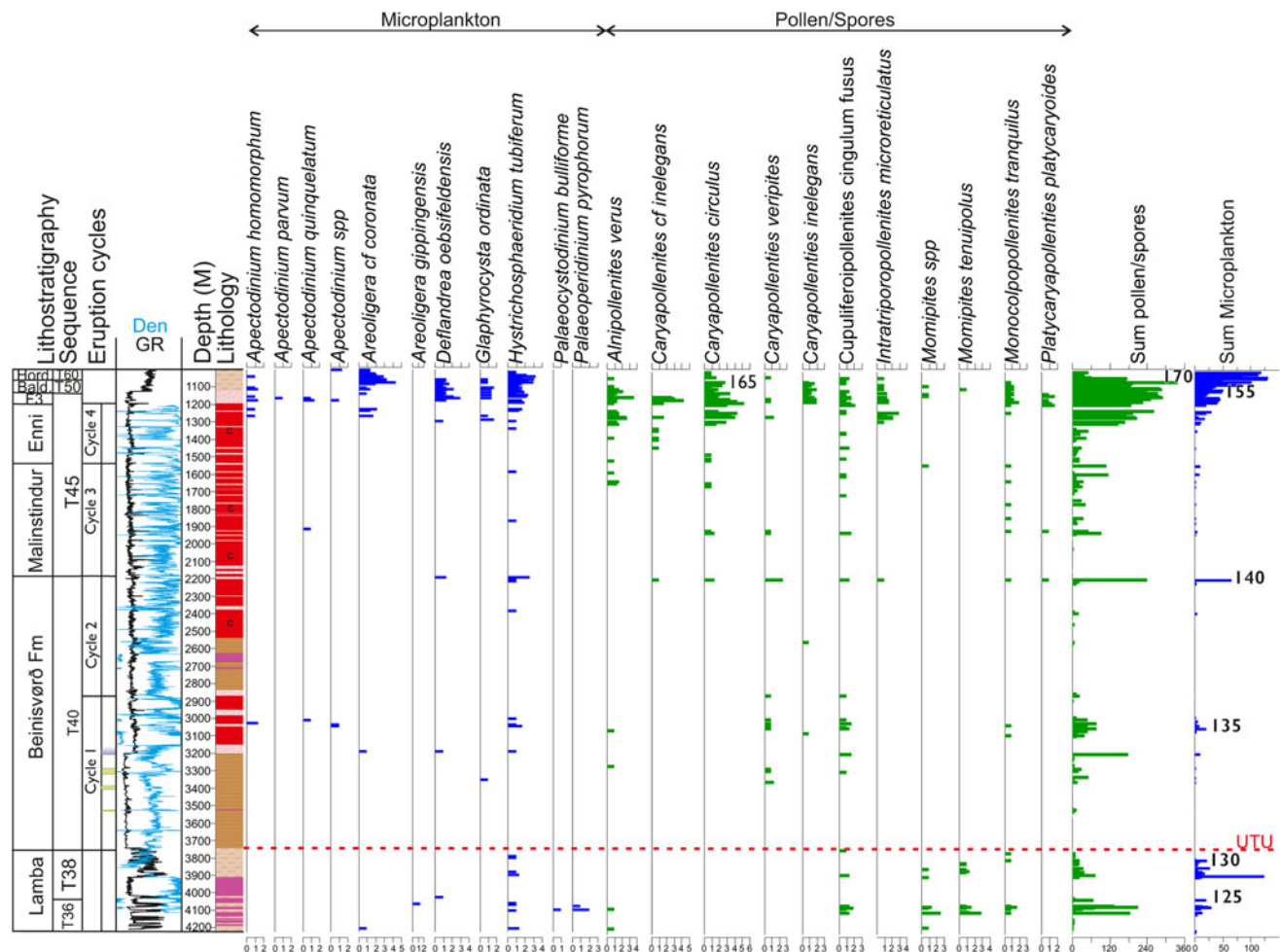


Figure 11 Brugdan 6104/21–1. The sub FIBG Lamba Formation marine sediments are heavily intruded. The occurrence of diverse dinocyst palynofloras, including *Areoligera gippingsensis* and *Hystrichosphaeridium tubiferum*, indicate deposition in an open marine mid-shelf environment. Influxes of *Momipites* species are characteristic of lower Sequence T36. Overlying the Lamba Formation are two hyaloclastite–flow field cycles, the upper part of Cycle 1 containing specimens of *Apectodinium* species (focussed at MFS 135) and frequent *Alnipollenites verus* and *Caryapollenites veripites*. This palynoflora indicates that the lava field penetrated in this well is within the upper part of Sequence T40. Because of the record of this flora derived from Cycle 1 interbeds, it is possible that the hyaloclastite interval of lower Cycle 1, with a low organic matter preservation potential, is also attributable to upper Sequence T40, forming part of the same depositional cycle. Relative sea level change within the Cycle 1 hyaloclastites is highlighted by influxes of pollen/spores and some algae (green and blue bars in the Eruption cycles column, respectively). These influxes are linked to eruption slow down and suggest a water depth of >100 m. The upper limit of the Sequence T40, Beinisvörð Formation equivalent lava succession is marked by the first downhole occurrence of common *C. veripites*, co-occurring with MFS140, which introduced common *H. tubiferum* and *Deflandrea oebisfeldensis*. All species palynomorph data displayed as square roots because of variable total counts; only stratigraphically significant taxa are displayed. Sum pollen/spores and sum microplankton are standardised raw totals to illustrate variable recovery.

fold in the overlying strata, demonstrated by the asymmetric onlap of the vent cone onto the anticline. The vent cone is composed of redeposited Lamba Formation sediment (Fig. 16), including a reworked dinocyst flora containing *Areoligera gippingsensis* and *Alisocysta margarita*. Overlying the vent deposits are marine turbidites of the Flett Formation (Grove 2013; Schofield *et al.* 2015), the lowermost beds of which contain common occurrences of *Areoligera cf. coronata*, *Deflandrea oebisfeldensis*, *Alnipollenites verus* and *Caryapollenites circulus*. These taxa are characteristic of the oldest, pre-PETM sediments of Sequence T40 – the influx of common *Apectodinium augustum* at 2934.64 m provides a confirmation of the assigned age and a proxy for the PETM hyperthermal (Crouch *et al.* 2003; Kender *et al.* 2012; Fig. 16). This species occurs in association with *Apectodinium parvum*, *Apectodinium paniculatum* and *Apectodinium homomorphum*, taxa which occur in both deeper and transitional marine facies of Sequence T40 following the PETM inception. Common occurrences of *Caryapollenites veripites* from 2529.84 m to 2807.21 m are characteristic of the recovery phase of the PETM in both the FSB and North Sea Basin. The association of these taxa with common *Platycaryapollenites*

platycaryoides and *A. verus* is typical of earliest Ypresian palynofloras (Schroder 1992; Beerling & Jolley 1998; Kender *et al.* 2012) and help to define the upper boundary of Sequence T40. The vent in well 214/28-1 occurs at the base of Flett Formation unit F1a (Fig. 2), some 60 m beneath the proxy for the PETM inception. Intrusion of this part of the FSSC was, therefore, not coincidental with the onset of the PETM CIE.

In volcanic successions (e.g., 217/15–1z; Fig. 13), the interval between the base of the Flett Formation/Sequence T40 and the first stratigraphical occurrence of the dinocyst proxy for the PETM is difficult to identify. In several wells, hyaloclastite deltas which contain transitional facies algae with long stratigraphical ranges rest directly on older Thanetian sedimentary rocks, or the contact is undrilled. This interval is also absent on basin highs, both in sedimentary and volcanic successions (Fig. 15). However, on the western flank of a tilted fault block, well 205/9-1 (Jolley 2009; Schofield & Jolley 2013; Fig. 9) preserves this interval in clastic sedimentary rock facies. The Thanetian to Ypresian transition is marked by sandstones and shales deposited in a shallowing upwards succession capped by two basalt lava flows, separated by a sedimentary interbed. The oldest, Thanetian

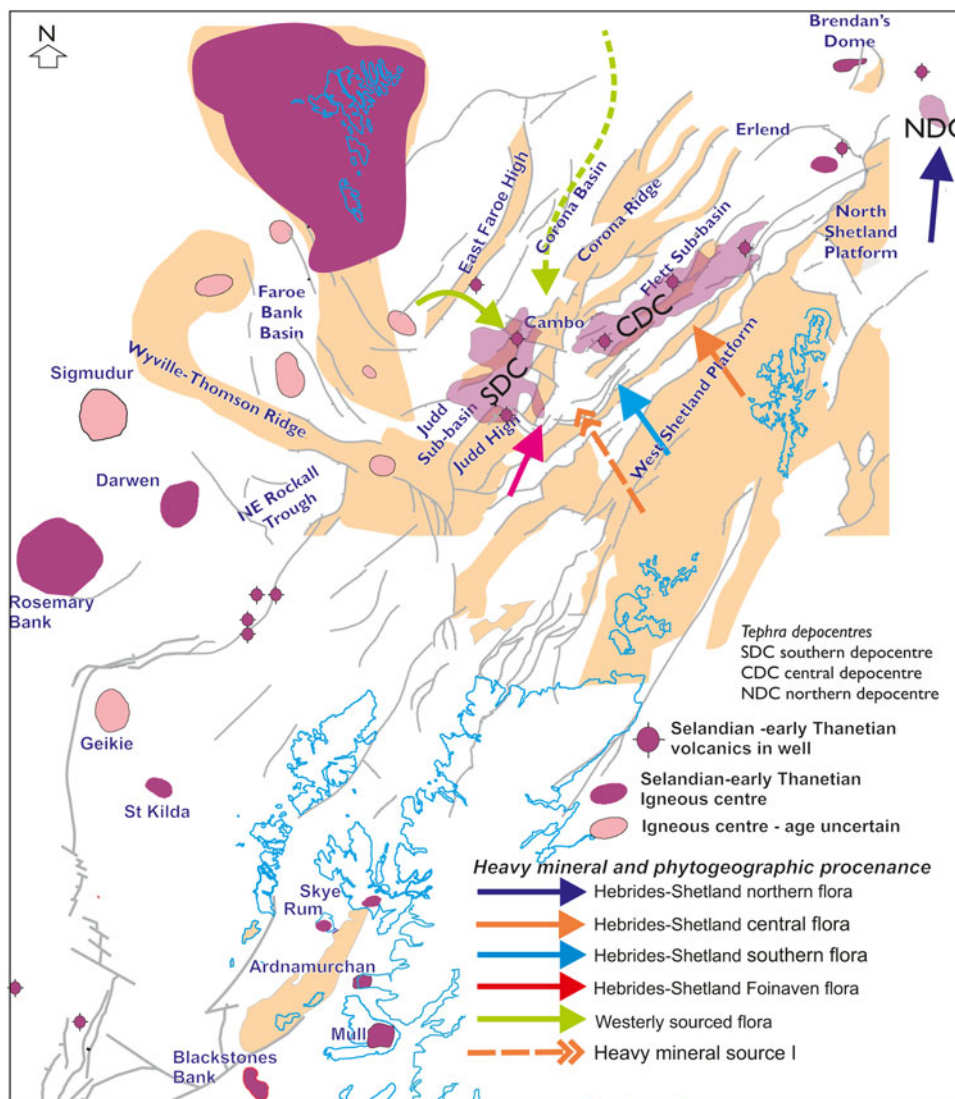


Figure 12 Map showing the location of pre-breakup volcanism in the Faroe–Shetland and Rockall basins. Only wells penetrating volcanics are shown, alongside seamounts of known age and correlative onshore exposures in the BPIP. The extent of the pre-breakup volcanic succession under the Faroe Islands is conjectural. The tephra depocentres are those of Watson *et al.* (2017) and the heavy mineral and phytogeographic provenance pathways are after Jolley & Morton (2007). Note that the tephra depocentres are basins with input from differing catchments.

part of this succession (Flett unit F1a in Fig. 9) is characterised by marine palynofloras with common *A. cf. coronata*. Above this, palynofloras were deposited in a shallow marine environment, which introduced abundant higher plant material. Because of the transitional fluvial to shallow marine facies, dinocysts belonging to the genus *Apectodinium* do not occur commonly in this well. However, common specimens of *C. veripites*, *P. platycaryoides* and, from 2831 m to 2722 m, common *Azolla massulae* associated with *Sparganiaceapollenites magnoides* are characteristic of the upper part of Flett Formation Unit F1b and the post-PETM recovery phase. *A. massulae* and *S. magnoides* are aquatic/aquatic marginal taxa, which occur in the Sequence T40, Colsay 1 interval interbeds on the Corona Ridge (e.g., Rosebank field well 213/27–2; Fig. 15).

The position of the PETM hyperthermal event within the Flett Formation was constrained using bulk palyδ¹³C for well 6005/15-1 (Fig. 3; supplementary data S3). The CIE excursion is recorded in the uppermost part of Sequence T40 preserved in this well. However, the characteristic CIE profile is truncated by the Flett unconformity (Shaw Champion *et al.* 2008; Hartley *et al.* 2011) at the Sequence T40–Sequence T45 boundary. Influxes of *A. verus*, *C. veripites* and *P. platycaryoides* define the upper limit of Sequence T40 in this well.

3.2. Later syn-breakup volcanism

Later syn-breakup volcanism attributed to Sequence T45 included lava flow fields which were geographically limited in comparison to those of Sequence T40. These flow fields are thickest towards the Faroe Islands (Malinstindur and Enni formations; Passey & Jolley 2009), and were drilled in the Brugdan prospect on the margin of the East Faroe High. In well 6104/21–1 on the East Faroe High (Figs 1, 11), a succession dominated by compound flows passes up-section into mixed compound and tabular sheet flows, similar to the onshore upper Malinstindur and Enni formations (Passey & Jolley 2009; Millett *et al.* 2017). The interbedded sedimentary rocks in this sequence yielded terrestrial palynomorphs, which become more abundant up-section. These increasingly diverse floras also exhibit later seral successional status, indicating decreasing vegetation community disturbance in response to the slowing eruption rate (e.g., Jolley *et al.* 2012).

On the western flank of the Corona Ridge, Sequence T40 volcaniclastic rocks in well 6104/25-1 (Fig. 14) are overlain by ca.300 m of flood basalt with subordinate volcaniclastic sedimentary rock units attributed to Sequence T45. Although the current seismic interpretations (Fig. 9) do not allow identification of the source of these flows, local fissures on the Corona

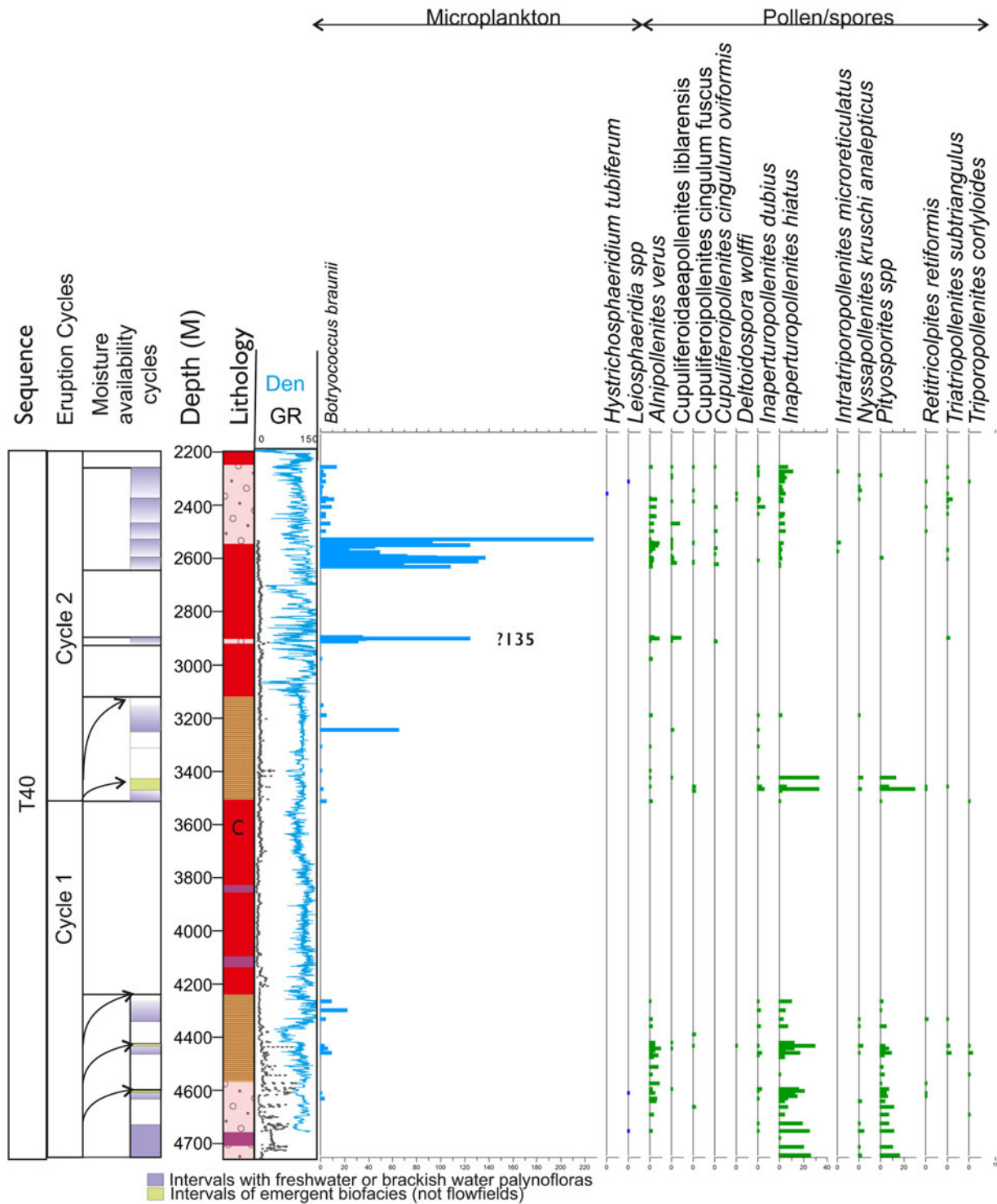


Figure 13 219/21-1 Lagavulin well. The well log is derived from Millett *et al.* (2016), showing the magmatic cycling recorded by those authors. In the hyaloclastite succession at the base of the well, evidence from influxes of terrestrial palynomorphs and low salinity/freshwater algae define a period of slower eruption. These suggest water depths of ~100 m, the hyaloclastite delta potentially becoming emergent up dip of the wellsite. Because this well is close to the source of high-volume eruption, age determination is difficult. However, the influx of common *Alnipollenites verus* and occurrences of *Triatriopollenites subtriangulus* in the upper part of Cycle 2 suggest an age no older than Sequence T40. All pollen and spore data are displayed as square roots, the chlorophycean algae *Botryococcus braunii* is displayed as raw data to emphasise the high-volume intra-lava occurrences. Only stratigraphically significant taxa are displayed.

Ridge are recognised as being the source of Sequence T45 lava fields (Schofield & Jolley 2013). These locally erupted compound flow fields were recorded in the Cambo and Rosebank fields area (Fig. 1; Schofield & Jolley 2013), thinning towards a zone of inter-digitation with estuarine and marine sedimentary rocks to the N. Additionally, these locally sourced lava fields are also recorded to the W and S of the Corona Ridge in well 6005/15-1 (Fig. 3). Here, a succession of upper Flett Formation inner

shelf marine to fluvial sedimentary strata includes two thin basalt lava flows (Jolley 2009; Schofield & Jolley 2013). This succession is overlain by marine sediments deposited during the uppermost Flett Formation transgression. This transgression is recorded basin-wide – for example, overlying the Enni Formation flow field in well 6104/21-1 (Fig. 11). Here, shelf marine volcanoclastic rocks are characterised by a dinocyst flora including common *Deflandrea oebisfeldensis*, *Hystrichosphaeridium tubiferum* and

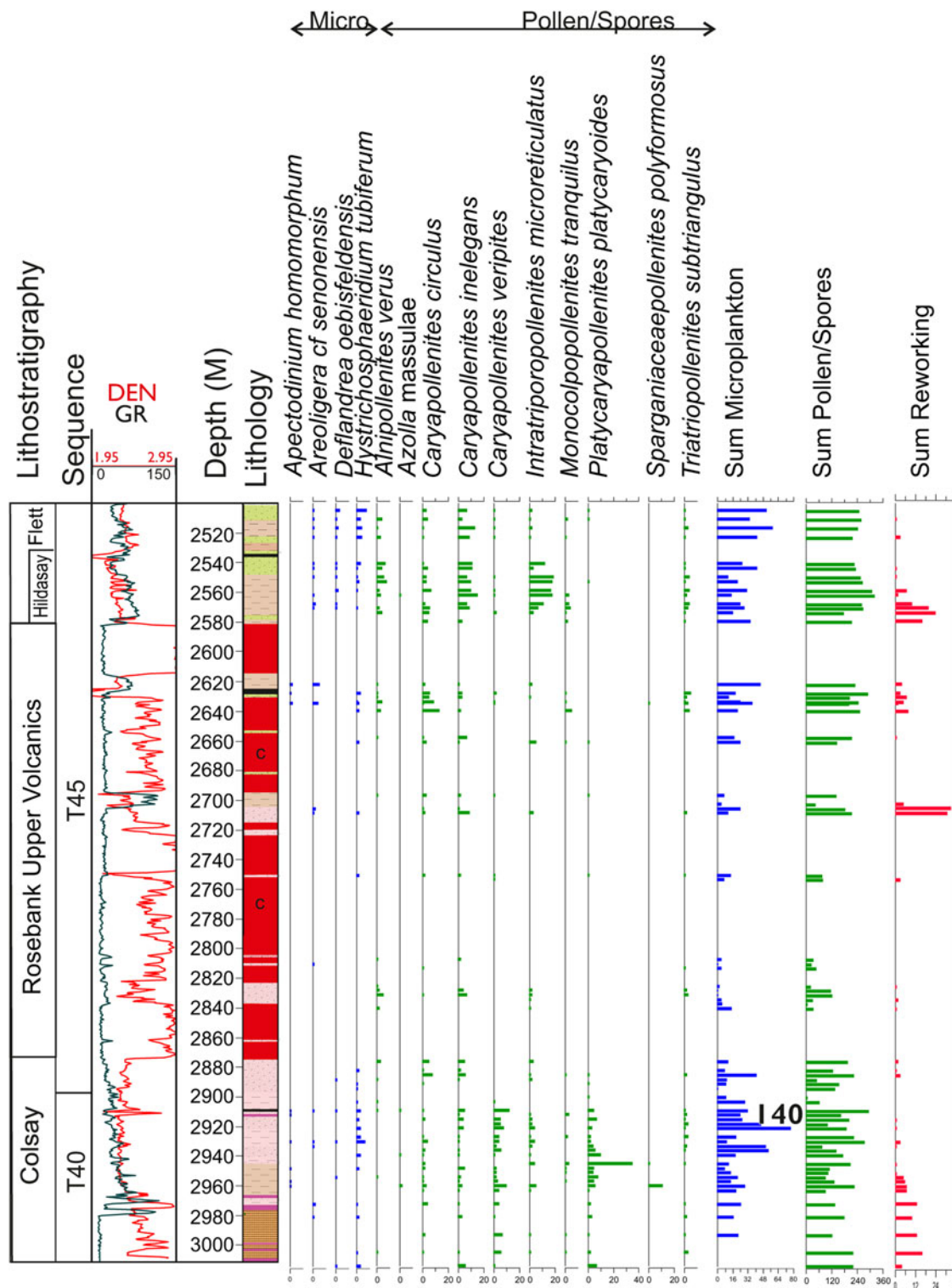


Figure 14 6104/25–1 Sula Stelkur. The upper limit of Sequence T40 is defined by the first downhole occurrence of common *Caryapollenites veripites*, coinciding with an influx of the dinocyst *Hystrichosphaeridium tubiferum*. The overlying lava succession contains interbeds with occurrences of *Caryapollenites circulus*, although all interbeds yield dinocysts indicating marine influence through eruption of the lava field. Reworking of dominantly Jurassic spores and pollen reflect interaction of the Flett Delta system with the lava field. All species palynomorph data displayed as square roots because of variable sample totals; only stratigraphically significant taxa are displayed. Sum pollen/spores, sum microplankton and sum reworking are plotted as raw data to illustrate intervals of variable recovery.

Apectodinium species (but excluding *Apectodinium augustum*). Comparable microplankton records have been made from uppermost Flett Formation siliciclastic sedimentary rocks on the Corona Ridge (Figs 14–16), indicating that volcanism ceased on the Corona Ridge prior to that on the East Faroe High.

Although Sequence T45 flows are overlain by siliciclastic fluvial to shelf marine Hildasay Mb strata on the Corona Ridge, intra-Sequence T45 marine incursions are also recorded here

(e.g., 6104/25–1 and 213/27–2; Figs 14, 15). Lava-bounded sedimentary rock successions of both marine and fluvial origin contain reworked, mainly Lower–Middle Jurassic palynomorphs. These reworked palynomorphs were probably eroded from structural highs or other Jurassic sediment sources and transported by the Flett Delta system. This delta system interdigitated with the Corona Ridge lava fields (Hardman *et al.* 2017), competing with them for depositional accommodation space.

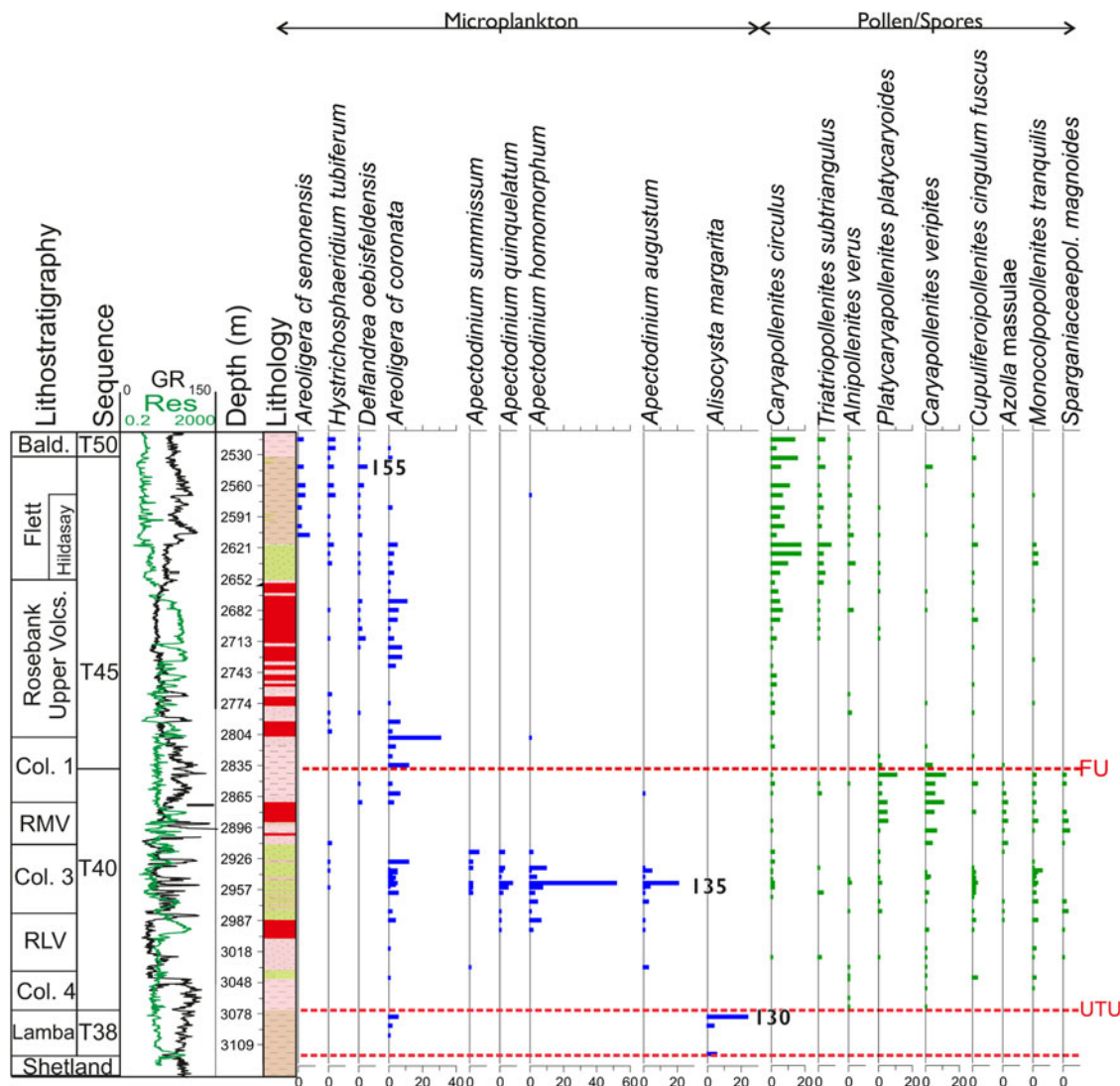


Figure 15 Well 213/27–2. Underlying the Rosebank Lower Volcanic (RLV) and Colsay 4 (Col. 4) volcanoclastic sedimentary succession are shallow-shelf marine shales of the Lamba Formation resting on the Cretaceous Shetland Group. An influx of common to abundant *Alisocysta margarita* indicates an age equivalent to Sequence T38 or older. An influx of *Apectodinium* species including common *Apectodinium augustum* in Colsay 3 (Col. 3) indicates MFS135, equivalent to the base of the PETM excursion event. The overlying Rosebank Middle Volcanics (RMV) and lower part of Colsay 1 (Col. 1) are dominated by pollen and shoreface dinocysts (*Areoligera cf. coronata*). Common occurrences of *Caryapollenites veripites* and *Platycaryapollenites platycaryoides* define the top of Sequence T40. Note that this falls within the Colsay 1 unit, a significant intra Colsay 1 unconformity is supported by the absence of MFS140 reflecting erosion/non-deposition at the Flett Unconformity. All species palynomorph data displayed as percentages; only stratigraphically significant taxa are displayed.

The resumption of marine sedimentation across the FSB after the cessation of eruptions was promoted by a lack of basin structuration. This is attributable to the topography-annealing influence of the recently erupted lava fields forming extensive basalt plains, in combination with continued reduction of thermal support within the region (Hardman *et al.* 2017). Lava field eruption in the FSB ceased in the earliest Eocene, but the basin continued to receive extensive ashfall during deposition of the Balder Formation. This reflects the shift of eruption activity towards the developing North Atlantic Rift, aligned on a NE–SW lineament away from the eastern peripheral zone (Fig. 17). This culminated in the flooding of the rift zone and the phreatomagmatic eruptions that sourced the geographically extensive ash deposits of the Balder Formation and correlative units.

4. Volcanic successions in the Rockall Basin

The Rockall Basin has fewer well penetrations and a lower density of seismic data coverage than the FSB. Recent re-appraisal of hydrocarbon prospectivity in the Rockall Basin to the S of the FSB

(Schofield *et al.* 2018; Broadley *et al.* 2020) has identified basin flank lava fields within both Sequence T40 and Sequence T36 along the eastern Rockall margin (Fig. 1). In this basin, the low density and quality of much of the subsurface samples or data has prevented recognition of any tephra deposits older than Thanetian.

Pre-breakup lower Thanetian (Sequence T36) lava fields identified by well penetrations in the Rockall Basin, to date, are small in overall spatial extent and are associated with shelf margin faulting (Fig. 1). These lava fields initiated as hyaloclastite deltas prograding westwards into the Rockall Trough. Successions of this character are recorded in wells 132/6–1, 132/15–1, 154/1–1, 154/1–2, 153/5–1 and 164/28–1A (Figs 1, 11; and see Schofield *et al.* 2018). For example, well 164/28–1A penetrated a ~300-m-thick hyaloclastite sequence (Figs 18, 19) overlain by ~100 m of a dominantly compound flow lava field. Overlain by Thanetian marine sedimentary rocks, this older lava field is, in turn, unconformably overlain by the prograding volcanoclastic and volcanic rocks of a syn-breakup, Sequence T40 lava field. Syn-breakup lava fields are extensive on the eastern Rockall Basin margin, but have fewer well penetrations (Fig. 17).

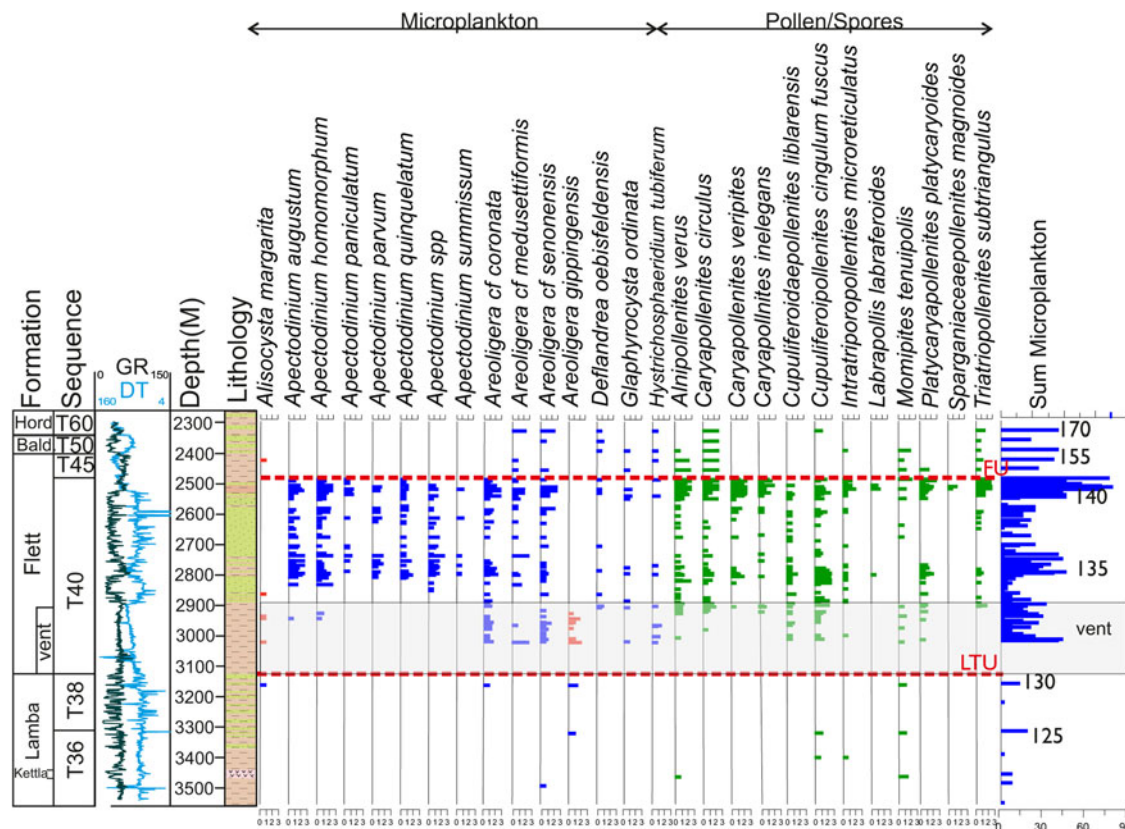


Figure 16 Well 214/28-1. This well penetrated a significant hydrothermal vent. Samples from beneath the hydrothermal vent system contain degraded palynofloras and thermally mature amorphous organic matter as a result of alteration by hydrothermal fluid flow. The Kettla Tuff Mb is defined from its wireline log signature. The hydrothermal vent was developed on the Upper Thanetian Unconformity, redepositing Lamba and Vailla formation sedimentary rocks, which have a uniform gamma-ray log signature. Overlying the vent ejecta are a succession of restricted circulation turbiditic marine shales and sandstones of Sequence T40. The interval from oldest common *Apectodinium* species, including *A. augustum* (MFS135) and the base of the turbidite succession is characterised by common *Alnipollenites verus* and *Cupuliferoipollenites cingulum* subsp., occurring with *Areoligera cf. coronata*, an assemblage typical of Flett Formation unit F1a. Flett Formation unit F1b is relatively thick in this well and includes an influx of common/abundant *Caryapollenites veripites* in the uppermost interval. This event is characteristic of the post-PETM excursion recovery stage in the North Sea Basin (e.g., Kender *et al.* 2012). Although Sequence T40 appears to be complete, the overlying Sequence T45 is strongly attenuated with no evidence for Flett Formation unit F2a being recorded. All species palynomorph data displayed as square roots because of variable sample totals; only stratigraphically significant taxa are displayed. Sum microplankton are plotted as raw data to illustrate intervals of variable recovery.

Wells 164/7-1 (Archer *et al.* 2005) and 164/25-2 to the NE (Figs 18, 19) both drilled this succession. The most stratigraphically extensive, well 164/25-2 drilled a thick hyaloclastite delta succession, which had prograded from the E (Schofield *et al.* 2018) and overlying basaltic lavas in a succession comparable to those in the FSB. Further, Sequence T40 volcanic delta facies were drilled by well 154/3-1, which penetrated approximately 500 m of hyaloclastites (Schofield *et al.* 2018) overlain by approximately 400 m of dominantly compound basalt lava flows. Although the Rockall Basin contains locally sourced lava fields attributable to Sequence T40, to date, no volcanic strata of Sequence T45 have been drilled.

Within the Rockall Basin, a number of large seamounts are present, which have been identified as being composed of Early Palaeogene intrusive igneous bodies. Three of these, Rosemary Bank, Hebrides Terrace and Anton Dohrn (Fig. 1), have been analysed from grab samples (O'Connor *et al.* 2000). These authors proposed that argon isotope (Ar)/Ar dates obtained from basalts collected by grab samples supported a pulsing mantle plume model. Volcanism was considered to begin at 70 ± 1 Ma, with pulses of activity recorded at 62 Ma, 52 Ma, 47 Ma, 42 Ma, which correspond with the Sullom and Horda formations of the equivalent Rockall Basin record. The dating of weathered basalts from grab samples with little geological context is problematical. Although these dates are statistically significant and included in the review of NAIP dating by Wilkinson *et al.* (2017), the nature of the material analysed introduces significant

uncertainty with respect to the geological accuracy of the chronostratigraphical results. Currently, of these five dates, only ~62 Ma is supported by other geological evidence from the Rockall and Faroe-Shetland basins.

The Rosemary Bank, Hebrides Terrace and Anton Dohrn seamounts are included in seismic data surveys tied to well data (Schofield *et al.* 2018). The Anton Dohrn seamount currently rises above the sea floor, and is surrounded by Late Palaeogene and Neogene marine sedimentary rocks. Within the rock succession around the centre, bright, high-amplitude reflectors dipping away from the centre are correlative with a prograding volcanoclastic delta and lava field system penetrated by wells 132/6-1 and 132/16-1 (Schofield *et al.* 2018, fig. 8). These are overlain by Eocene Balder Formation and Horda Formation sedimentary rocks, which onlap onto the Anton Dohrn structure, overstepping the potentially Sequence T36 volcanics/volcaniclastics. The Anton Dohrn centre was a topographic high during the deposition of these Sequence T40-Sequence T50 sedimentary rocks, much as it is today. Syn-breakup volcanic activity on Anton Dohrn appears unlikely based on the available age dating and the evidence from seismic interpretation. There is greater uncertainty over the initiation of this and other complexes given the lack of deep-well penetrations.

5. Discussion

Analysis of FSB and Rockall Basin strata has confirmed two main periods of volcanic activity (Fig. 20). Upper Danian to

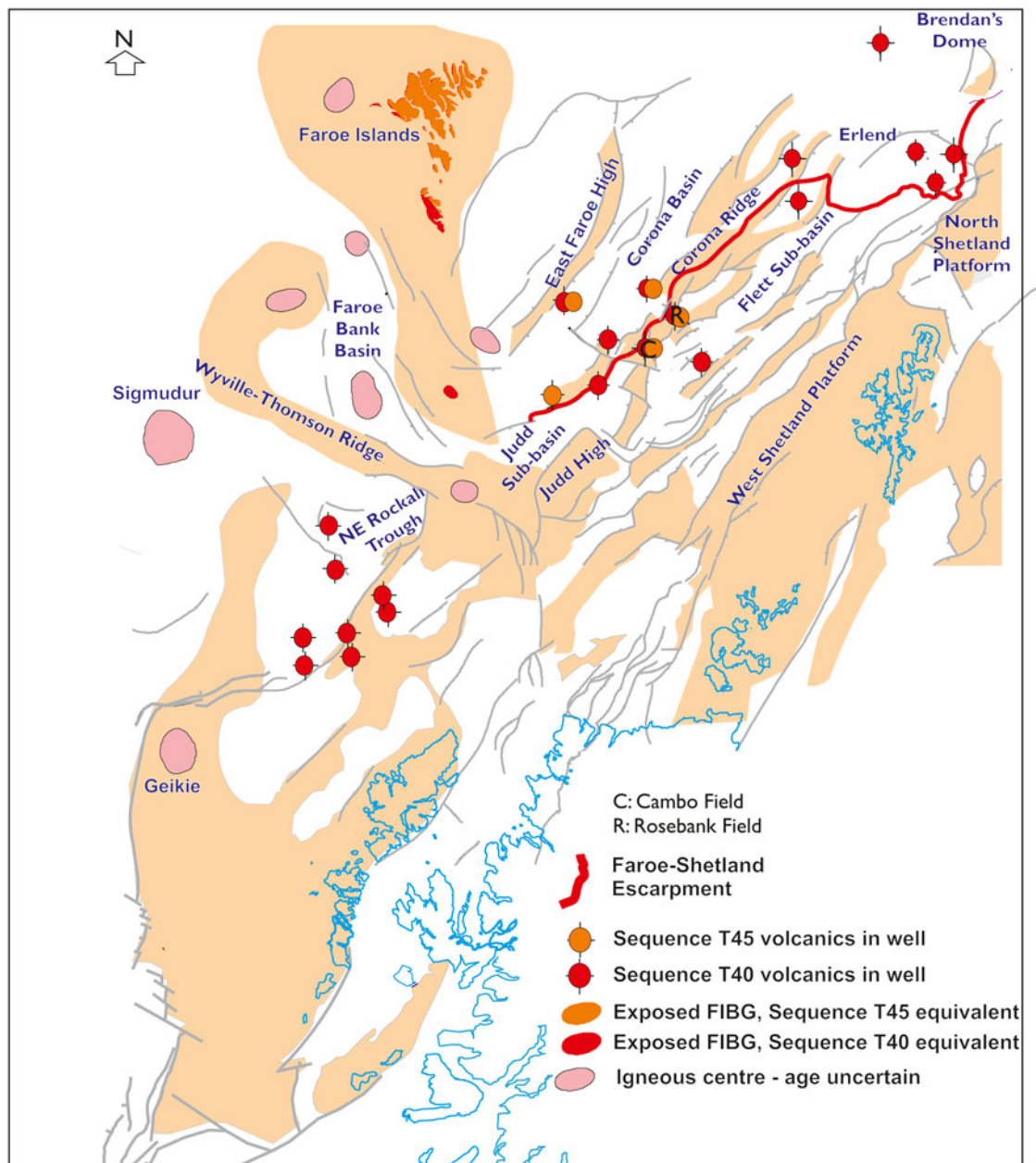


Figure 17 Map of syn-breakup volcanic rocks drilled in Faroe–Shetland and Rockall basin wells, exposed in the BPIP and on the exposed FIBG. The limit of the Faroe–Shetland Escarpment is also shown for reference. Volcanism is focused NE–SW across FSB and the Northeast Rockall Trough. Late syn-breakup, Sequence T45 extrusive volcanism is concentrated in the NW of the area, towards the location of the nascent North Atlantic Rift.

lower Thanetian pre-breakup volcanic activity corresponds to pyroclastic Phase 1 (Knox & Morton 1988; Watson *et al.* 2017) and is composed of dominantly acidic ashes. In contrast, upper Thanetian to Ypresian syn-breakup activity includes the dominantly basaltic pyroclastic Phase 2 of Knox & Morton (1988). The onset of pre-breakup volcanism was correlated with calcareous nannofossil zone NP4 (62.2 Ma, latest Danian; Ogg *et al.* 2016) by Nielsen *et al.* (2007). This date is comparable to geochronological ages for the oldest volcanics of the onshore BPIP (see Fig. 20), the Eigg Lava Formation and Muck Tuff (Eigg Lava 62.55 ± 1 Ma Ar–Ar sanidine tephra (Storey *et al.* 2007); Muck Tuff 61.74 ± 1.76 Ma sanidine tephra (Chambers *et al.* 2005)). The onset of volcanism was linked by Nielsen *et al.* (2007) to a change in tectonic regime from compressional to relaxational at ~ 62.2 Ma following cessation of N–S convergence between Europe and Africa. Consequential rifting in the FSB gave rise to pre-breakup volcanic activity (62.5–58.7 Ma), including the Sequence T36 lava fields (59.6–58.95 Ma). Within

the Faroe–Shetland and Rockall basins, pre-breakup volcanism can be divided into four intervals (Fig. 20).

The oldest volcanic activity recorded in the Faroe–Shetland and Rockall basins is of upper Danian to lower Selandian age. Tephra records in Sequence T10 to Sequence T22 strata are coeval with the earliest volcanism recorded in the BPIP (Fig. 20), currently recorded from small exposures in Antrim and the Small Isles. Pillow lavas from the Mull Central Complex have also yielded a statistically valid date of 62.87 ± 0.48 Ma (Chambers *et al.* 2005; Wilkinson *et al.* 2017), indicating that they were erupted early in the evolution of the BPIP. This analysis was derived from a sample (SO17) included in a palaeomagnetic investigation of igneous rocks from Mull by Dagley *et al.* (1987). Sample SO17 was collected from pillow lavas within Mull Central Complex Centre 1 and described by these authors as ‘texturally granoblastic, indicating recrystallization’. They highlight that the ‘amygdales which once contained zeolites and chlorite have recrystallize to form plagioclase and pyroxene’.

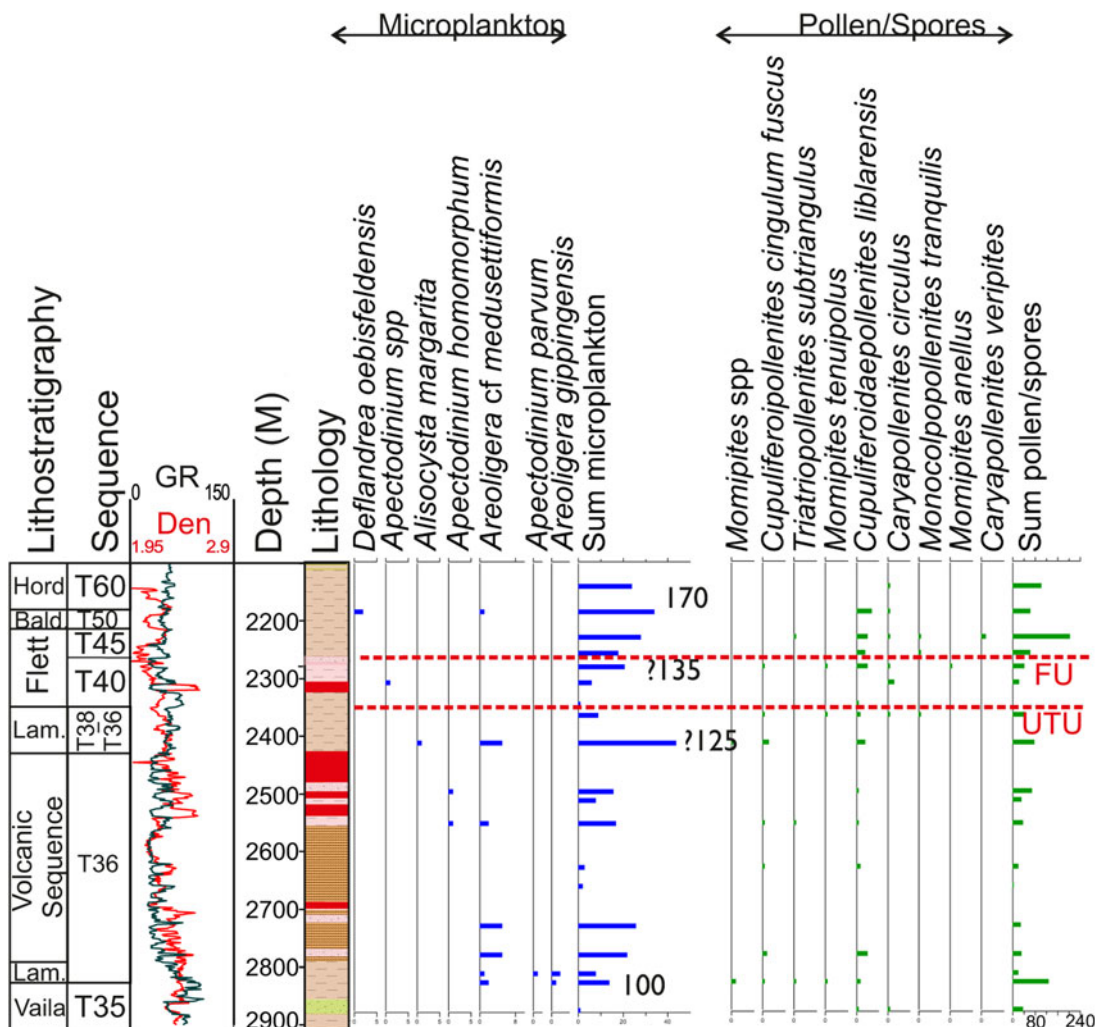


Figure 18 Well 164/28-1a. Positioned to the W of the West Lewis Ridge, this well recorded volcanoclastic and volcanic strata in Sequence T36. Occurrences of *Alisocysta margarita* and common *Areoligera cf. medusettiformis* in the marine shales overlying the volcanic succession indicate a lower Thanetian age. Above these, the Sequence T40 volcanic succession palynoflora contains *Caryapollenites circulus* and *Apectodinium* spp., with the overlying Sequence T45–Sequence T50 interval containing *Deflandrea oebisfeldensis*. All species palynomorph data displayed as square roots because of variable sample totals; only stratigraphically significant taxa are displayed. Sum pollen/spores, sum microplankton are plotted as raw data to illustrate intervals of variable recovery.

At best, the radiometric age derived from sample SO17 records a magmatic intrusion event, which caused contact metamorphism of these lavas.

The Mid Selandian interval during which sequences T25 to T31 Vailla Formation deposition took place, is characterised by an apparent absence of tephra in the Faroe–Shetland and Rockall basins. Isotope dating of the Rum early rhyodacite (Troll *et al.* 2008) and the Central Complex (Hamilton *et al.* 1998) indicate that activity did continue in the BPIP at the uplifted margin of the nascent North Atlantic Rift (Fig. 20). The absence of any tephra sourced from Rum in the Rockall Basin may be a consequence of it being adjacent to an area of few well penetrations. It may also be a result of prevailing westerly winds (Knox & Morton 1988) transporting the ash to the SE. This apparent volcanic hiatus in the Faroe–Shetland and Rockall basins is followed by a period of increased tephra input into the basin, preserved in sequences T32–T35. This activity overlaps with the radiometric age errors of a felsic dyke in Mull Centre 3 (Loch Ba Dyke; Fig. 20), although the sampled dyke is a normally magnetised rock, which is most likely attributable to C26N.

The extrusive lava fields and extensively distributed tephra attributed to Sequence T36 mark the peak of Selandian volcanism in the Rockall Basin and FSB. The upper Selandian Kettle Tuff

Mb and age-equivalent small lava flow fields are correlative with extrusive activity in the BPIP. The Skye Main Lava Series (SMLS) and apparently coeval Canna Lava Formation were erupted into eroded valleys in the Rum Western Granite (Emeleus 1997). The granite forms part of the Rum Central Complex, which has been dated as Selandian (Fig. 20; Hamilton *et al.* 1998). The SMLS lava field was subsequently intruded by the Thanetian, Cuillins Gabbro (Gabbro pegmatite 58.91 ± 0.06 Ma; Hamilton *et al.* 1988). All of the SMLS lavas are of reversed magnetic polarity (Wilson *et al.* 1972), indicating lava field eruption prior to Chron 26N. In the ~1 Myr between intrusion of the Rum Central Complex and C26N, significant uplift and erosion of the area was experienced followed by the eruption of the SMLS. Between 0.25 and 2.0 km of strata were thought to have been removed from above the Rum granodiorite (Troll *et al.* 2008), prior to eruption of the SMLS, indicating significant, rapid uplift and subsequent denudation of the basin's eastern flank.

Sequence T36 lava fields were located along the easterly margin of the active depocentres in the FSB and Rockall Basins with, currently, only a single example on the East Faroe High. Others appear as within-basin seamounts in the Rockall Basin. This spatial distribution and pattern of extrusive and pyroclastic volcanism was related to NNE–SSW-orientated early-stage rifting through the Faroe–Shetland and Rockall basins (Fig. 12). This

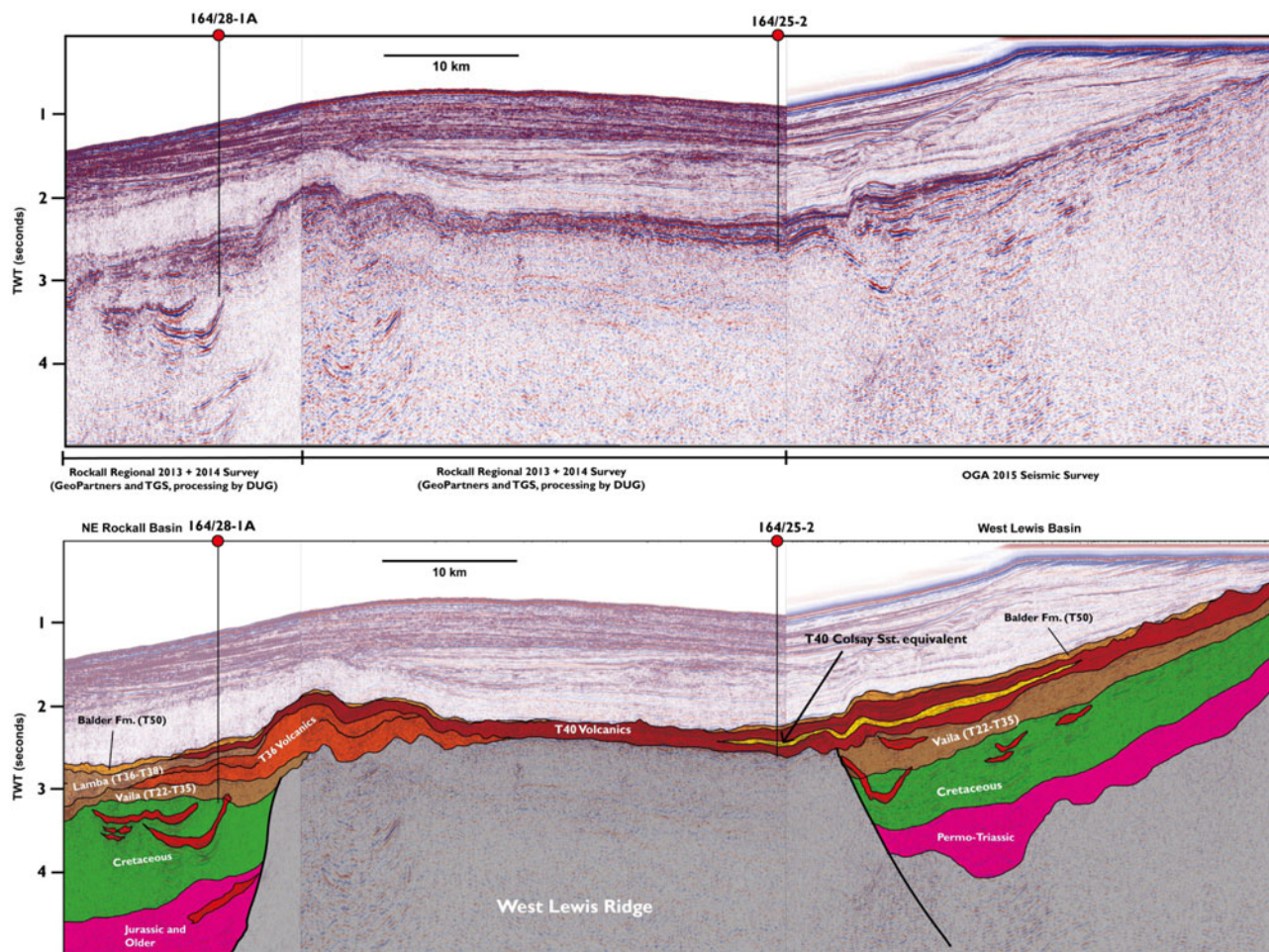


Figure 19 Rockall geoseismic correlation tied to well 164/28-1a (Fig. 18) and to well 164/25-2, the latter drilled through the eastern margin of the West Lewis Ridge (see Schofield *et al.* 2018). The Sequence T36 volcanics are apparently restricted to the western margin of the West Lewis Ridge and were probably sourced from a magmatic system related to the western bounding faults. The Sequence T40 volcanoclastic and volcanic strata, although thinner, are more extensive.

rifting is comparable in style to that seen along the Mid Ethiopian Rift (e.g., Keir *et al.* 2015; Sieberg *et al.* 2017).

Following cessation of Selandian to lower Thanetian extrusive volcanism in both the Faroe–Shetland and Rockall basins (Schofield *et al.* 2018), siliciclastic sedimentation continued, with deposition of the marine Lamba Formation (Sequence T38, Thanetian). Cessation of volcanic activity during the Thanetian (58.6–57 Ma) is considered to have occurred towards the close of a phase of relaxation related inversion in NW Europe (Nielsen *et al.* 2007). This inversion was inferred to relate to the ending of Africa–Europe convergence and was associated with a southerly migration of depocentres in the Sorgenfrei–Tornquist Zone of the eastern North Sea during this time (Nielsen *et al.* 2007). Resumption of sedimentation in the Faroe–Shetland and Rockall basins after ~57 Ma was reflected by a basin-wards shift in gross depositional environment from open-circulation shelf marine to variable salinity, restricted-circulation shallow-shelf marine and terrestrial facies at the base of the Flett Formation (Ellis & Stoker 2014). In both basins, flood basalts, terrestrial or restricted-circulation shallow marine deposits are recorded resting unconformably on open-circulation marine shelf sediments of the Lamba or Vaila formations. This uplift is inferred to have resulted either from a resumption of thermal support from the magmatic system (e.g., Hartley *et al.* 2011), from intra-plate rift-related stresses (Stoker *et al.* 2017), or the intrusion of several hundreds of meters in gross thickness of FSSC sills into Mesozoic sedimentary rocks (Schofield *et al.* 2015). Within the FSB, widespread hyaloclastite delta progradation and

subsequent flood basalt eruptions were sourced from the FIBG in the NW, from N of the Ben Nevis structure (Millett *et al.* 2016; McLean *et al.* 2017), from near the Erlend Volcanic Centre (Jolley & Bell 2002) and from localised fissures along the Corona Ridge and adjacent fault blocks (Schofield & Jolley 2013; Hardman *et al.* 2018). Eruptive cyclicality was recorded within the Beinivörð Formation of the FIBG (Jolley *et al.* 2012), with a total cessation of Beinivörð Formation eruption at ~55.85 Ma. This cessation of volcanic activity is recorded basin-wide from Kangerlussuaq (Ellis & Stoker 2014) in the W, the Faroe Islands (Passey & Jolley 2009), around the Erlend Volcanic complex in the N (Jolley & Bell 2002) to the eastern margin of the Rockall Basin in the S (Schofield *et al.* 2018; Broadley *et al.* 2020).

Debate continues surrounding the age of the Beinivörð Formation lavas of the FIBG, with Waagstein *et al.* (2002) reporting whole-rock potassium (K)–Ar and Ar–Ar ages from altered basalt samples suggesting an onset of volcanism at $ca. 58.8 \pm 0.5$ Ma, whilst Storey *et al.* (2007) reported ages as old as 60.8 ± 1.2 Ma for Ar–Ar determinations on plagioclase separates from lavas penetrated by the Lopra 1/1A borehole (Storey *et al.* 2007; Fig. 20). For both the K–Ar and Ar–Ar isotopic dating methods, it has been widely reported that even small degrees of alteration (often petrographically invisible) can significantly affect age determinations (e.g., Hofmann *et al.* 2000; Kelley 2002; Baksi 2007; Baksi & Reidel 2013; Cramer *et al.* 2013); therefore, challenges remain in terms of appraising the validity of low-K basaltic rocks that have undergone low-temperature metamorphism with clear evidence for the passage of heated hydrothermal fluids. In this regard,

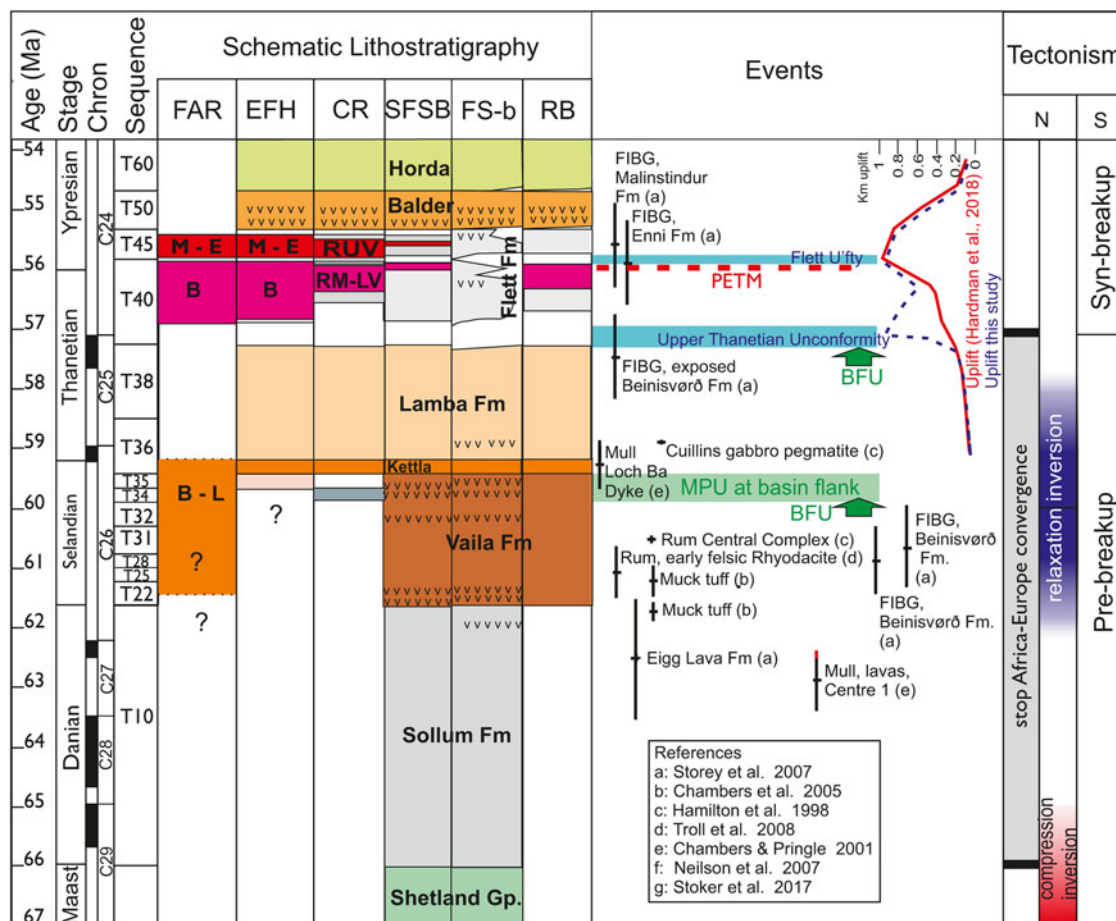


Figure 20 Synthesis panel showing the stratigraphical distribution volcanic and volcanoclastic rocks in the study area. Stratigraphical columns for locations are labelled as follows: FAR = Faroe Islands; EFH = East Faroe High; CR = Corona Ridge; SFSB = southern FSB; FSb = Flett Sub-basin; RB = Rockall Basin. Lithostratigraphical formations are coloured differently for clarity, and labelled as follows: B = Beinisvørð Formation; M = Malinstindur Formation; E = Enni Formation; RM-LV = Rosebank Lower to Middle Volcanics; RUV = Rosebank Upper Volcanics; v = occurrences of volcanic ash in FSB and Rockall Basin sedimentary rocks. Radiometric dates for igneous centres and volcanic rocks which were determined to be statistically valid (Wilkinson *et al.* 2017) are shown in the Events column. Experimental errors on these dates are shown in black. Red bars indicate the restriction to these errors from age control imparted by the polarity of the host rock. The date for Mull Centre 1 pillow lavas is derived from a contact metamorphosed rock and included to highlight the potential age of intrusions in the Mull Central Complex. The red uplift curve is derived from Shaw Champion *et al.* (2008) and Hartley *et al.* (2011), as modified by Hardman *et al.* (2018). The maximum uplift post-dates the extrusion of the most voluminous flood basalt sequences and corresponds to a widespread unconformity and incision surface across the basin. The uplift curve of Hardman *et al.* (2018) is shown as a solid line, with the dashed line inferring the uplift at the Upper Thanetian Unconformity event demonstrated here. BFU = basin flank uplift episodes discussed in the text. Blue horizontal bars mark major basin unconformities. USE = upper Selandian Event marked by an expanded succession in the FSB and a correlative unconformity in the North Sea Basin. The right hand track ‘N’ in the diagram shows the correlation to tectonic events proposed by Nielsen *et al.* (2007) and those in track ‘S’ by Stoker *et al.* (2017).

Waagstein *et al.* (2002) clearly acknowledge increasing evidence for alteration of plagioclase phenocrysts with depth in the Lopra well: ‘[t]he plagioclase is generally clear and fresh-looking in the basalts from the upper part of the formation, but becomes increasingly clouded with microscopic inclusions and tiny fracture fillings downwards in the Lopra well’ (p. 225).

A recent re-evaluation of the isotopic age dates for the North Atlantic discounted the Waagstein *et al.* (2002) ages, but appraised the Storey *et al.* (2007) ages as experimentally robust based on screening criteria, and recalculated them based on the updated timescale of Gradstein *et al.* (2012) to give an oldest age of 60.83 ± 0.6 Ma (Wilkinson *et al.* 2017; Fig. 20). These data imply continuous volcanism over a period of >5 Myr. Biostratigraphic approaches outlined in Passey & Jolley (2009) and Schofield & Jolley (2013) attributed the Beinisvørð Formation to Sequence T40, indicating a younger age and shorter period of eruption (<1.5 Myr). With new data provided by the analysis of the Brugdan wells on the East Faroe High and the associated seismic data interpretations presented here, a reappraisal of the discrepancy is timely.

The principal challenge for palynology in the Beinisvørð Formation lava field sections is that the sedimentary interbeds

contain a poor marine dinocyst record due to deposition in dominantly sub-aerial to shallow-water environments. Pollen and spores from higher plants occur commonly, but stratigraphically significant assemblages are restricted to interbeds formed over longer time periods (Jolley *et al.* 2012). Constrained by the lower Ypresian, post-PETM terrestrial palynoflora of the overlying Prestfjall Formation (Passey & Jolley 2009), the exposed Beinisvørð Formation contains palynofloras, including frequent *Caryapollenites veripites*, which indicate upper Sequence T40 equivalent strata. On the Faroe Islands, the subsurface Beinisvørð Formation is only penetrated by the Lopra 1/1A borehole. Drilled in two stages, samples recovered from drilling are limited to five cores of igneous lithologies and a suite of ditch cuttings. Samples taken from these ditch cuttings yielded palynofloras that lack age-diagnostic assemblages below 700 m (below sea level). However, because these assemblages are derived from ditch cuttings, cavings in the open hole may have extended this record down-section. Below 700 m, the majority of the subsurface Beinisvørð Formation and the Lopra Formation has yielded palaeoenvironmental data, but no direct biostratigraphical age constraint. While the biostratigraphical and radiometric age determinations arrived at different conclusions,

they both shared one aspect of interpretation – that the Beinivørð and Lopra formations of the Faroe Islands area represented a single continuous period of volcanic activity, the difference between the approaches being the duration of that activity.

New information which helps to constrain the age of the southeastern margin of the FIBG is provided by the penetration of the succession in wells 6104/21–1 and 6104/21–2 (Figs 8, 11). These wells demonstrate the presence of the Thanetian to Selandian Lamba Formation and Vaila Formation marine shelf sedimentary rocks, including the Kettla Tuff Mb, underneath the FIBG basalts. Absence of biostratigraphical constraint on the seismic and well log data has previously led to these sub-FIBG sediments and their hosted intrusions being regarded as part of the overlying lava pile (Olavsdottir *et al.* 2019). However, the occurrence of the Kettla Tuff Mb and underlying volcanoclastic, shallow marine sandstones of Sequence T35 in well 6104/21–2 (Figs 8, 11) is significant. The observed thickening north-eastwards of this unit under the Sequence T40–Sequence T45 FIBG lava field (Fig. 9) indicates the presence of a Selandian volcanic succession on the East Faroe Platform, which potentially continues underneath the Faroe Islands. From seismic data (Fig. 9), Lamba Formation marine sedimentary rocks are observed to pinch out to the NW between the Selandian volcanic succession and the overlying Ypresian, Sequence T40 FIBG lava field. FIBG upper Thanetian to lower Ypresian volcanic rocks, therefore, rest unconformably on Selandian volcanic strata NE of the East Faroe High and potentially in the area of the Faroe Islands. Superposition of Palaeogene lava fields of different ages has been recognised within the Faroe–Shetland and Rockall basins (Lagavulin–Ben Nevis, McLean *et al.* 2017; Rockall Basin, Schofield *et al.* 2015; Figs 18, 19) and is probably more widespread (see also Anne Marie prospect on the Corona Ridge; Fig. 6). The presence of a Selandian volcanic succession unconformably overlain by an upper Thanetian to lower Ypresian lava field is concordant with the radiometric dates of Storey *et al.* (2007). Selandian radiometric ages from the Lopra 1/1A borehole (60.63 ± 0.70 Ma; 60.83 ± 0.60 Ma) contrast with a radiometric age (57.49 ± 0.60 Ma) indicating upper Thanetian eruption of the exposed Beinivørð Formation.

In the FSB, activity resumed in lower Sequence T45 (Ypresian, ~ 55.8 Ma) on the Corona Ridge, with the eruption of dominantly fissure-fed flow fields (Schofield & Jolley 2013). Thicker Sequence T45 lavas were extruded, dominantly from low-angle shield volcanoes to the W in two large-scale cycles forming the Malinstindur and Enni formations of the FIBG (Passey & Jolley 2009; Millett *et al.* 2017). Equivalent Ypresian flow fields prograded towards the E, although those drilled on the Corona Ridge were locally erupted (Schofield & Jolley 2013; Hardman *et al.* 2017; Poppitt *et al.* 2018). These local-sourced flow fields of both Sequence T40 and Sequence T45, in particular those of the Corona Ridge, have been included within the mapped extent of the Faroe–Shetland Escarpment (Fig. 1). Interpreted as a hyaloclastite delta front (Passey & Hitchen 2011), previously published and new evidence presented here indicates that this feature is composed of flow fields of different source areas and ages, including some intrusive sheets.

6. Unconformities

The Selandian to lower Ypresian interval of the Faroe–Shetland and Rockall basins is recognised as including three major unconformities (e.g., Stoker *et al.* 2017). The oldest Danian–Selandian Unconformity is apparently unrelated to volcanism in the NAIP (Stoker *et al.* 2017). However, the Mid Palaeogene Unconformity

and Flett Unconformity have been recorded to be coincidental with syn-breakup and post-breakup volcanism.

Coeval with the uplift and erosion of the Inner Hebrides, a Mid Palaeocene unconformity (Stoker *et al.* 2017; Olavsdottir *et al.* 2019) has been recorded in the FSB and tied to the upper boundary of Sequence T35. Well and seismic data do not provide evidence of a significant unconformity within the basin at this point (Figs 7, 9), but do indicate the presence of an expanded section between Sequence T34 and the top of Sequence T36. Within the North Sea Basin, the Kettla Tuff Mb equivalent Glamis Tuff Mb occurs below the acme of *Areoligera gippingensis* and above the first downhole influx of *Palaeoperidinium pyrophrum* (Jolley 1998; Vieira *et al.* 2020). In the FSB, the Kettla Tuff Mb (at the base of Sequence T36) is significantly higher up the succession than the first downhole occurrence of common *P. pyrophrum*. This occurs at the upper limit of Sequence T31. The interval equivalent to sequences T32, T34 and T35 is, therefore, highly condensed or missing in the North Sea Basin. This is potentially a result of extensional pre-breakup subsidence in the FSB and a lack of accommodation space on the uplifted flank in the North Sea Basin. The presence of an expanded succession in the FSB is supported by the tentative identification of a negative carbon isotope excursion (Fig. 3) in Sequence T34, a potential record of the Selandian–Thanetian Transitional Event (STTE; Barnet *et al.* 2019). This event is recorded as occurring immediately below Chron 26N in Tethys (Gubbio section; Cocchioni *et al.* 2012) and in the lower latitude North Atlantic (Zumia section; Storme 2012).

Confusion has been centred around the stratigraphical position and extent of the well-documented Flett Unconformity (Shaw Champion *et al.* 2008; Hartley *et al.* 2011; Stoker *et al.* 2017). In the Judd Sub-basin, a NW-trending, incised dendritic drainage system was deeply eroded during Flett Formation times into the underlying Lamba Formation. This drainage system has been attributed to transient uplift associated with the impact of the Iceland Plume in the region (Shaw Champion *et al.* 2008), tied to pulsing of the mantle plume around the PETM. These authors linked the erosion surface to the onset of Flett Formation deposition (e.g., Stoker *et al.* 2017), or to the PETM (Hartley *et al.* 2011). However, these interpretations have been significantly hampered by a lack of biostratigraphical control in an interval where low-salinity marine and terrestrial palynofloras are dominant.

Wells penetrating the most complete successions in inter-channel zones of the Judd Sub-basin dendritic system (e.g., 204/22–2 and 204/25a-3; see supplementary data S2) include sedimentary rock units deposited in fluvially dominated facies during uppermost Sequence T40 (equivalent to LAZ Rc6–Rc7; Schofield & Jolley 2013; Fig. 2). These inter-dendritic channel strata are unconformably overlain by terrestrial to shallow marine, Sequence T45 (Flett Formation Unit F2b–F3) strata. Where the dendritic channels are most deeply incised (into Sequence T38, Lamba Formation), the oldest post-erosion channel fill is attributable to Flett Formation Unit F2a (e.g., 204/19–1; see supplementary data S2). While these data support uplift and incision of the Judd Sub-basin area, it is clear that the erosive phase identified by previous authors occurred after the deposition of uppermost Sequence T40 sediments – that is, within the Flett Formation, not at the onset of its deposition.

Within the Judd Sub-basin, uppermost Flett Formation Unit F1b strata rest unconformably on Sequence T38 marine Lamba Formation sediments (supplementary data S2). These strata are, in turn, locally eroded and overlain by Sequence T45 Flett Formation sedimentary rocks. This succession highlights the presence of a second, older unconformity. Lack of effective biostratigraphical control has resulted in these two erosion surfaces being amalgamated.

Further evidence of the sub Flett Formation (sub Sequence T40) unconformity, here termed the Upper Thanetian Unconformity, is recorded in the geoseismic interpretation of the southern FSB presented here (Fig. 7) and is also present in interpreted seismic lines presented by Hardman *et al.* (2018; Fig. 2). Here, the Upper Thanetian Unconformity is evident as an uplifted and deeply eroded surface, dissecting the uppermost Lamba Formation Sequence T38. The most deeply eroded areas provided accommodation space for the deposition of shallow marine to terrestrial Sequence T40 sedimentation (e.g., 6005/15–1; Fig. 3). In this well, the uppermost Flett Formation Unit 1b, which includes the youngest PETM excursion and recovery phase, is eroded by the subsequent Flett Unconformity. In this case, shallow marine sediments of Flett Formation Unit F2b–F3 were deposited on the Flett Unconformity surface (Fig. 3).

Within the Judd Sub-basin, the Flett Unconformity dendritic drainage system was initiated at the boundary between Flett Formation units F1b and F2a. How much of this system was inherited from the more extensive Upper Thanetian Unconformity surface is currently undetermined, as is the impact of the amalgamation of these surfaces on estimations of uplift. The development of the dendritic Flett Unconformity in the Judd Sub-basin has been attributed to a greater degree of uplift in the S of the FSB (Stoker *et al.* 2017). This appears to be a perception driven by the absence of three-dimensional seismic data in the centre and N of the FSB. However, two-dimensional seismic data and associated well penetrations clearly identify the presence of a significant correlative erosion surface in the Flett Sub-basin to the N and in the S of the Corona Basin (Fig. 7). The change from open-circulation marine sedimentation to organic rich, restricted-circulation shallow marine to terrestrial sedimentation was noted at this boundary by Ellis & Stoker (2014). This change is mirrored at the correlative unconformity surface in the North Sea, where the Lista Formation is overlain by the Forties Mb of the Sele Formation. Similarly, shift to transitional zone facies is recorded as far S as southeastern England, where the Thanet Sands/Ormesby Clay formations are overlain by Lambeth Group (Ellison *et al.* 1994).

The timing of uplift associated with the Flett Unconformity has been discussed by Hardman *et al.* (2018), who reported evidence for a slow decline in thermal support following maximum uplift (Fig. 20) during deposition of the Flett Formation. Maximum incision on the palaeo-shelf and, thus, maximum uplift has been proposed to have occurred at the Sequence T40–Sequence T45 boundary (Fig. 20). This was coincident with the slow down and cessation of eruption of the widespread Sequence T40 lava fields, including the exposed Beinisvorð Formation of the FIBG. Thermal support from magmatism is demonstrated to have continued after the maximum effusion of flood basalts in the Beinisvorð Formation, and to occur within the Colsay 1 sedimentary rock succession of the Corona Ridge (Figs 3, 15). The cessation of high-volume flood basalt eruption and switch to lower-volume intrusion and eruptions at this time is attributed to a switch to higher-level melts and intrusions.

Identification of the Upper Thanetian and Flett unconformities sheds light on the timing of uplift in the Faroe–Shetland and Rockall basins. The most prolonged gap in the stratigraphical record coincides with the incision of the most prominent erosion surface at the upper Thanetian Sequence T38–Sequence T40 boundary. Calculations of uplift at the younger Flett Unconformity by Shaw Champion *et al.* (2008) are, therefore, based on an inherited drainage system modified by later Ypresian erosion at the Sequence T40–Sequence T45 boundary. Maximum uplift of the FSB occurred at the Upper Thanetian Unconformity, immediately preceding the onset of widespread flood basalt eruption in Sequence T40 (Fig. 20) and coincidental with at

least one phase of FSSC intrusion in the Flett Sub-basin (Fig. 16).

7. Conclusions

Integration of biostratigraphical, wireline log and geophysical data has identified two periods of eruption in the Faroe–Shetland and Rockall Basins. These periods have different orientations and foci, resulting from them being responses to different processes.

The first period is pre-breakup. Volcanism occurred as a consequence of a rifting episode driven by a relaxation of intra-plate deformation in Europe following the cessation of convergence of Africa and Europe at 62 Ma. This early rift was orientated SSW–NNE on a Cretaceous trend and parallel to the continental margin in the Rockall Basin and FSB. Volcanic activity was initially concentrated at basin flank structures, under the present Faroe Islands and within the Rockall Basin at seamounts. Structural lineaments linked the basin volcanism to rift-flank volcanism of the BPIP, focussed at large igneous centres. Some of these central complexes (e.g., Rum, Mull) were uplifted and rapidly eroded later during the pre-breakup period, at a time when additional accommodation space was developed in the offshore sedimentary basins. This is interpreted as a ~61 Ma phase of basin flank uplift, amplified by a shallowing of melt depth and associated granitic intrusions (Hole *et al.* 2015). At the non-volcanic margins of the FSB, this late uplift phase is potentially associated with the Mid Palaeocene Unconformity of some authors (e.g., Stoker *et al.* 2017). Only one rift-flank flow field has been identified to date on the western side of the pre-breakup basin, against many on the eastern flank and within the basin. These stretch from the Rockall Basin to the Ben Nevis structure. This could suggest that this rift was asymmetrical, but much of the potential evidence lies beneath the extrusive volcanic rocks of the syn-breakup eruptions. Cessation of pre-breakup eruption is correlated to the cessation of intra-European plate relaxation inversion (Nielsen *et al.* 2007).

The second period of eruption is syn-breakup. The most geographically widespread phase of flood basalt eruptions initiated following a major eastern margin North Atlantic uplift event, which resulted in the Upper Thanetian Unconformity in the Rockall Basin and FSB. Initial high-volume extrusive igneous successions were focussed to the W of the FSB. In the centre and E of the basin, separate eruption loci developed along pre-existing lineaments either as fissure or point-sourced lava fields. With shallowing of melting at the end of the first stage, a granitic centre developed on Skye (Eastern Red Hills Granites) and thermal support was maintained in the basin beyond the end of high-volume flood basalt eruption.

Reactivation and further erosion of the Upper Thanetian Unconformity surface at ~55.85 Ma was linked to formation of the Flett Unconformity. Subsequent slow basin subsidence (Hardman *et al.* 2018) resulted in deposition of shallow marine to terrestrial sedimentary successions, infilling the eroded surface. These interdigitated with the syn-breakup lava fields developed at the basin centre and western margin. The north-westerly shift of eruption focus and the eruption of mid ocean ridge basalt (MORB)-type lavas in the younger stages of the syn-breakup reflects the emplacement of oceanic crust in the nascent North Atlantic Rift prior to flooding of the rift and eruption of the widespread Balder Formation ashes.

Over the Palaeogene, Stoker *et al.* (2017) present evidence that the opening of the NE Atlantic is not simple rift to post-rift subsidence, but a long-term record of tectonic instability and vertical crustal motions into the Eocene. The evidence presented here confirms that a Danian–Thanetian nascent rift developed on a Cretaceous lineament along the Rockall Basin and FSB as a

result of changes in intra-plate stress regimes in Europe. Clarification of the relationship of syn-breakup to the record of regional uplift highlights that the oldest, highest amplitude uplift (which formed the Upper Thanetian Unconformity) occurred prior to, or at the onset of, syn-breakup magmatism. Changes in gross depositional environment across the unconformity, noted earlier by Ellis & Stoker (2014), are seen over the 1000 km from the Faroe–Shetland to the London Basin, all signifying uplift, erosion and subsequent dominance by terrestrial and restricted marine depositional systems. Regional uplift of this magnitude is likely to be a reflection of changes in tectonic regime, exceeding the magnitude of the expected effects of a mantle plume.

8. Supplementary material

Supplementary material is available online at <https://doi.org/10.1017/S1755691021000037>.

9. Acknowledgements

The authors would like to thank Simon Kelley for comments on an earlier draft of the manuscript and for discussions on radiometric age dating. Dougal Jerram and John Faithfull are thanked for their constructive and helpful comments on the manuscript. PGS are thanked for permission to publish FSB MegaSurvey Plus data shown in Figures 6 and 8. PGS and TGS are thanked for permission to publish seismic data from the FSB2012 GeoStreamer survey also shown in Figure 6. Data used in Figure 19 are courtesy of GeoPartners and TGS, processing by DUG. IHS Kingdom Suite and Schlumberger Petrel Software are thanked for their donation of academic licenses to the University of Aberdeen.

10. References

- Ali, J. R. & Jolley, D. W. 1996. Biostratigraphically constrained magnetostratigraphy of the 33 Paleocene and Early Eocene of the Anglo – Belgium – Paris Basin. In Knox, R. W. O'B., Corfield, R. & Dunay, R. E. (eds) *Correlation of the Early Paleogene in northwest Europe*, 129–44. London: Geological Society of London, Special Publication 101.
- Angkasa, S. S., Jerram, D. A., Millett, J. M., Svensen, H. H., Planke, S., Taylor, R. A., Schofield, N. & Howell, J. 2017. Mafic intrusions, hydrothermal venting, and the basalt-sediment transition: linking onshore and offshore examples from the North Atlantic igneous province. *Interpretation* 5, SK83–101.
- Archer, S. G., Bergman, S. C., Iiffie, J., Murphy, C. M. & Thornton, M. 2005. Palaeogene igneous rocks reveal new insights into the geodynamic evolution and petroleum potential of the Rockall Trough, NE Atlantic Margin. *Basin Research* 17, 171–201.
- Baksi, A. K. 2007. A quantitative tool for detecting alteration in undisturbed rocks and minerals – I: water, chemical weathering, and atmospheric argon. In Foulger, G. R. & Jurdy, D. M. (eds) *Plates, plumes and planetary processes*, 285–303. Boulder, Colorado, USA: Geological Society of America, Special Papers, 388.
- Baksi, A. K. & Reidel, S.P. 2013. Timing and duration of volcanism in the Columbia River Basalt Group: a review of existing radiometric data and new constraints on the age of the Steens through Wanapum Basalt extrusion. *The Columbia River Flood Basalt Province: Geological Society of America Special Papers* 497, 67–85.
- Barnet, J. S. K., Littler, K., Westerhold, T., Kroon, D., Leng, M. J., Bailey, L., Rohl U. & Zachos, J. C., 2019. A high-fidelity benthic stable isotope record of Cretaceous–Early Eocene climate change and carbon-cycling. *Paleoceanography and Paleoclimatology* 34, 672–91.
- Beerling, D. J. & Jolley, D. W. 1998. Fossil plants record an atmospheric $^{12}\text{CO}_2$ and temperature spike across the Paleocene-Eocene transition in NW Europe. *Journal of the Geological Society, London* 155, 591–94.
- Broadley, L., Schofield, N., Jolley, D., Howell, J. & Underhill, J. 2020. UK Rockall prospectivity: re-awakening exploration in a frontier basin. *Petroleum Geoscience* 26, 247–71.
- Chambers, L. M., Pringle, M. S. & Parrish, R. R. 2005. Rapid formation of the Small Isles Tertiary centre constrained by precise $^{40}\text{Ar}/^{39}\text{Ar}$ and U–Pb ages. *Lithos* 79, 367–84.
- Coccioni, R., Bancalà, G., Catanzariti, R., Fornaciari, E., Frontalini, F., Giuberti, L., Jovane, L., Luciani, V., Savian, J. & Sprovieri, M. 2012. An integrated stratigraphic record of the Palaeocene-Lower Eocene at Gubbio (Italy): new insights into the Early Palaeogene hyperthermals and carbon isotope excursions: Early Palaeogene integrated stratigraphy at Gubbio. *Terra Nova* 24, 380–86.
- Cramer, E. L., Sherlock, S. C., Halton, A. M., Blake, S., Barry, T.L., Kelley, S. P. & Jolley, D. W. 2013. Which age is the true age? Unravelling within-flow $^{40}\text{Ar}/^{39}\text{Ar}$ age variations in Faroe Islands basalt lavas. *Mineralogical Magazine* 77, 294.
- Crouch, E. M., Dickens, G. R., Brinkhuis, H., Aubry, M.-P., Hollis, C. J., Rogers, K. M. & Visscher, H. 2003. The *Apectodinium* Acme and terrestrial discharge during the Paleocene-Eocene thermal maximum: new palynological, geochemical and calcareous nannoplankton observations at Tawanui, New Zealand. *Palaeogeography, Palaeoclimatology, Palaeoecology* 194, 387–403.
- Dagley, P., Mussett, A. E. & Skelhorn, R. R. 1987. Polarity, stratigraphy and duration of the Tertiary igneous activity of Mull, Scotland. *Journal of the Geological Society, London* 144, 985–96.
- Ebdon, C. C., Granger, P. J., Johnson, H. D. & Evans A. M. 1995. Early tertiary evolution and stratigraphy of the Faeroe-Shetland Basin: implications for hydrocarbon prospectivity. In Scrutton, R. A., Stoker, M., Shimmield, G. B. & Tudhope, A. W. (eds) *Sedimentation and palaeoceanography of the North Atlantic region*, 51–69. London: Geological Society of London, Special Publication 90.
- Eidesgaard, O. R. & Ziska, H. 2015. The Kettle Member; an overview from the Faroe Shetland Basin. In Eidesgaard, O. R. & Ziska, H. (eds) *Faroe Islands Exploration conference: proceedings of the 4th conference*. Torshavn: Annals Societatis Scientiarum Faerensis, 26–44. Supplementum 64.
- Eldrett, J., Efthymios, T., Davis, C., McKie, T., Vieira, M., Osterloff, P. & Sanderson, T. 2015. Sedimentological evolution of Sele Formation deep-marine depositional systems of the Central North Sea. In McKie, T., Rose, P. T. S., Hartley, A. J., Jones, D. W. & Armstrong, T. L. (eds) *Tertiary deep-marine reservoirs of the North Sea*, 63–98. London: Geological Society London, Special Publication 403.
- Ellis, D., Jolley, D. W., Passey, S. R. Bell, B. R. 2009. Transfer zones: the application of new geological information from the Faroe Islands to the offshore exploration of intra basalt and sub basalt prospects. In Varming, T. et al. (eds) *Faroe Islands Exploration conference: proceedings of the 2nd conference*, 205–26. Torshavn.
- Ellis, D. & Stoker, M. 2014. The Faroe-Shetland Basin: a regional perspective from the Paleocene to the present day and its relationship to the opening of the North Atlantic Ocean. In Cannon, S. J. C. & Ellis, D. (eds) *Hydrocarbon exploration to exploitation West of Shetlands*, 11–31. London: Geological Society, London, Special Publications 397.
- Ellison, R. A., Knox, R. W. O'B., Jolley, D. W. & King, C. 1994. A revision of the lithostratigraphical classification of the early Palaeogene strata of the London Basin and East Anglia. *Proceedings of the Geologists' Association* 105, 187–97.
- Emeleus, C. H. 1997. *Geology of Rum and adjacent islands*. Memoir of the British Geological Survey, Sheet 60, (Scotland) HMSO.
- Emeleus, C. H. & Bell, B. R. 2005. *British Regional geology: the Palaeogene volcanic districts of Scotland*. 4th edn. Nottingham: British Geological Survey, 214 pp.
- Gallagher, J. W. & Drumgoole, P. W. 2007. Exploring below the basalt, offshore Faroes: a case history of sub-basalt imaging. *Petroleum Geoscience* 13, 213–25.
- Ganerød, M., Smethurst, M. A., Torsvik, T. H., Prestvik, T., Rouse, S., McKenna, C., van Hinsbergen, D. J. J. & Hendriks, B. W. H. 2010. The North Atlantic Igneous Province reconstructed and its relation to the Plume Generation Zone: the Antrim Lava Group revisited. *Geophysical Journal International* 182, 183–202.
- Gradstein, F.M., Ogg, J.G., Schmitz, M.D. & Ogg, G.M. 2012. *The geological time scale 2012*. Elsevier, 1144 pp.
- Grove, C. 2013. Submarine hydrothermal vent complexes in the Paleocene of the Faroe-Shetland Basin: insights from three-dimensional seismic and petrographical data. *Geology* 41, 71–74.
- Hamilton, M. A., Pearson, D. G., Thompson, R. N., Kelley, S. P. & Emeleus, C. H. 1998. Rapid eruption of Skye lavas inferred from precise U–Pb and Ar–Ar dating on the Rum and Cuillin plutonic complexes. *Nature* 394, 260–62.
- Hardman, J., Schofield, N., Jolley, D. W., Hartley, A., Holford, S. & Watson, D. 2017. Controls on the distribution of volcanism and intra-basaltic sediments in the Cambo-Rosebank region, west of Shetland. *Petroleum Geoscience*, 19pp. doi: 10.1144/petgeo2017-061.

- Hardman, J. P. A., Schofield, N., Jolley, D. W., Holford, S. P., Hartley, A. J., Morse, S., Underhill, J., Watson, D. A. & Zimmer, E. H. 2018. Prolonged dynamic support from the Icelandic plume of the NE Atlantic margin. *Journal of the Geological Society* **175**, 396.
- Hartley, R. A., Roberts, G. C., White, N. & Richardson, C. 2011. Transient convective uplift of an ancient buried landscape. *Nature Geoscience* **4**, 562–65.
- Heilmann-Clausen, C. 1985. Dinoflagellate stratigraphy of the uppermost Danian to Ypresian in the Viborg I borehole, central Jylland, Denmark. *Danmarks Geologiske Undersøgelse, Serie A*, **7**, 1–69, pl 1–15.
- Helland-Hansen, D. 2009. Rosebank – challenges to development from a subsurface perspective. In Varming, T. & Ziska, H. (eds) *Faroe Islands Exploration conference: proceedings of the 2nd conference*, 63–78. Færoensis: Annales Societatis Scientiarum. Supplementum 50.
- Hofmann, C., Féraud, G. & Courtillot, V. 2000. ⁴⁰Ar/³⁹Ar Dating of mineral separates and whole rocks from the Western Ghats lava pile: further constraints on duration and age of the Deccan Traps. *Earth and Planetary Science Letters* **180**, 13–27.
- Hole, M. J., Millett, J. M., Rogers, N. W. & Jolley, D. W. 2015. Rifting and mafic magmatism in the Hebridean basins. *Journal of the Geological Society, London* **172**, 218–36.
- Jerram, D. A., Single, R. T., Hobbs, R. W. & Nelson, C. E. 2009. Understanding the offshore flood basalt sequence using onshore volcanic facies analogues: an example from the Faroe Shetland basin. *Geological Magazine* **146**, 353–67.
- Jolley, D. W. 1996. The earliest Eocene sediments of eastern England; an ultra high resolution palynological correlation. In Knox, R. W. O'B., Corfield, R. & Dunay, R. E. (eds) *Correlation of the Early Paleogene in northwest Europe*, 219–54. London: Geological Society of London, Special Publication, 101.
- Jolley, D. W. 1998. Palynostratigraphy and depositional history of the Palaeocene Ormesby/Thanet depositional sequence set in south-eastern England and its correlation with continental west Europe and the Lista Formation, North Sea. *Review of Palaeobotany and Palynology* **99**, 265–315.
- Jolley, D. W. 2009. Palynofloral evidence for the onset and cessation of eruption of the Faroe Islands lava field. In Varming, T. et al. (eds) *Faroe Islands Exploration conference: proceedings of the 2nd conference*, 156–73. Tórshavn.
- Jolley, D. W., Morton, A. C. & Prince, I. P. 2005. Volcanogenic impact on phytogeography and sediment dispersal patterns in the NE Atlantic. In Dore A. G. & Vining, B. A. (eds) *Petroleum geology: NW Europe and global perspectives, proceedings of the 6th petroleum geology conference*, 969–75. London: Geological Society.
- Jolley, D. W., Widdowson, M. & Self, S. M. 2008. Volcanogenic nutrient fluxes and plant ecosystems in Large Igneous Provinces. An example from the Columbia River Basalt Group. *Journal of the Geological Society, London* **165**, 955–66.
- Jolley, D. W., Passey, S., Hole, M. & Millett, J. 2012. Basaltic melt fractionation drives plant ecosystem dynamics. *Geological Society, London* **163**, 709–11.
- Jolley, D. W. & Bell, B. R. 2002. Genesis and age of the Erlend Volcano, NE Atlantic Margin. In Jolley, D. W. & Bell, B. R. (eds) *The North Atlantic igneous province: stratigraphy, tectonic, volcanic and magmatic processes*, 95–110. Geological Society, London, Special Publication 197.
- Jolley, D. W. & Morton, A. C. 2007. Understanding basin sedimentary provenance: evidence from allied phytogeographic and heavy mineral analysis of the Paleocene of the NE Atlantic. *Journal of the Geological Society, London* **164**, 553–64.
- Jolley, D. W. & Whitham, A. 2004. A stratigraphical and palaeoenvironmental analysis of the sub-basaltic Palaeogene sediments of east Greenland. *Petroleum Geoscience* **10**, 53–60.
- Jolley, D. W. & Widdowson, M. 2005. North Atlantic rift eruptions drive Eocene climate cooling. *Lithos* **79**, 355–66.
- Jones, M. T., Augland, L. E., Shephard, G. E., Burgess, S. D., Eliassen, G. T., Jochmann, M. M., Friis, B., Jerram, D. A., Planke, S. & Svensen, H. H. 2017. Constraining shifts in North Atlantic plate motions during the Palaeocene by U-Pb dating of Svalbard tephra layers. *Nature, Scientific Reports* **7**, 6822.
- Keir, D., Bastow, I. D. & Corti, G. 2015. The origin of along-rift variations in faulting and magmatism in the Ethiopian rift. *Tectonics* **34**, 464–77.
- Kelley, S. 2002. K-Ar and Ar-Ar dating. *Reviews in Mineralogy and Geochemistry* **47**, 785–818.
- Kender, S., Stephenson, M. H., Riding, J. B., Leng, M. J., Knox, R. W. O'B., Peck, V. L., Kendrick, C. P., Ellis, M. A., Vane, C. H. & Jamieson, R. 2012. Marine and terrestrial environmental changes in NW Europe preceding carbon release at the Paleocene-Eocene transition. *Earth and Planetary Science Letters* **353–354**, 108–20.
- Knox, R. W. O'B. & Holloway, S. 1992. 1. Paleogene of the Central and Northern North Sea. In Knox, R. W. O'B. & Cordey, W. G. (eds) *Lithostratigraphic nomenclature of the UK North Sea*. British Geological Survey, Nottingham, 133pp.
- Knox, R. W. O'B. & Morton, A. C. 1988. The record of early Tertiary N Atlantic volcanism in sediments of the North Sea Basin. In Morton, A. C. & Parson, L. M. (eds) *Early Tertiary volcanism and the opening of the NE Atlantic*, 407–19. London: Geological Society Special Publications, 39.
- McLean, C. E., Schofield, N., Brown, D. J., Jolley, D. W. & Reid, A. 2017. 3D Seismic imaging of the shallow plumbing system beneath the Ben Nevis Monogenetic Volcanic Field: Faroe-Shetland Basin. *Journal of the Geological Society* **174**, 468–85.
- Millett, J. M., Hole, M. J. & Jolley, D. W. 2014. A fresh approach to ditch cutting analysis as an aid to exploration in areas affected by large igneous province (LIP) volcanism. In Cannon, S. J. C. & Ellis, D. (eds) *Hydrocarbon exploration to exploitation West of Shetlands*, 14 pp. London: Geological Society, London. Special Publications 397, <http://dx.doi.org/10.1144/SP397.2>.
- Millett, J. M., Hole, M. J., Jolley, D. W., Schofield, N. & Campbell, E. 2016. Frontier exploration and the North Atlantic Igneous Province: new insights from a 2.6 km offshore volcanic sequence in the NE Faroe-Shetland Basin. *Journal of the Geological Society* **173**, 320–36.
- Millett, J. M., Hole, M. J., Jolley, D. W. & Passey, S. R. 2017. Geochemical stratigraphy and correlation within large igneous provinces: the final preserved stages of the Faroe Islands Basalt Group. *Lithos* **286–87**, 1–15.
- Morton, A. C., Evans, D., Harland, R., King, C. & Ritchie, J. D. 1988. Volcanic ash in a cored borehole W of the Shetland Islands: evidence for Selandian (late Paleocene) volcanism in the Faeroes region. In Morton, A. C. & Parson, L. M. (eds) *Early Tertiary volcanism and the opening of the NE Atlantic*, 263–69. London: Geological Society of London, Special Publications 39.
- Mudge, D. C. 2015. Regional controls on Lower Tertiary sandstone distribution in the North Sea and NE Atlantic margin basins. In McKie, T., Rose, P. T. S., Hartley, A. J., Jones, D. W. & Armstrong T. L. (eds) *Tertiary deep marine reservoirs of the North Sea Region*, 17–42. London: Geological Society London, Special Publications 403.
- Mudge, D. C. & Bujak, J. P. 2001. Biostratigraphical evidence for evolving palaeoenvironments in the Lower Paleogene of the Faeroe-Shetland Basin. *Marine & Petroleum Geology* **18**, 557–90.
- Naylor, P. H., Bell, B. R., Jolley, D. W., Durnall, P. & Fredstead, R. 1999. Palaeogene magmatism in the Faeroe-Shetland Basin: influences on uplift history and sedimentation. In Fleet & Boldy, Petroleum Geology of Northwest Europe, Proceedings of the 5th Conference, Geological Society of London, 545–58.
- Nielsen, S. B., Stephenson, R. & Thomsen, E. 2007. Dynamics of mid-Palaeocene North Atlantic rifting linked with European intra-plate deformations. *Nature* **450**, 1071–74.
- Nelson, C. E., Jerram, D. A., Single, R. T. & Hobbs, R. W. 2009. Understanding the facies architecture of flood basalts and volcanic rifted margins and its effects on geophysical properties. Proceedings of the 2nd Faroe Islands Exploration Conference. Annales Societatis Scientiarum Færoensis, Supplementum 50, 84–103.
- O'Connor, J. M., Stoffers, P., Wijbrans, J. R., Shannon, P. M. & Morrissey, T. 2000. Evidence from episodic seamount volcanism for pulsing of the Iceland plume in the past 70 Myr. *Nature* **408**, 954–58.
- Ogg, J. G., Ogg, G. & Gradstein, F. M. 2016. *A concise geologic time scale 2016*. Amsterdam: Elsevier, 250 pp.
- Olavsdottir, J., Stoker, M. S., Boldreel, L. O., Andersen, M. S. & Eidegaard, O. R. 2019. Seismic-stratigraphic constraints on the age of the Faroe Islands Basalt Group, Faroe-Shetland region, Northeast Atlantic Ocean. *Basin Research* **31**, 841–65.
- Parsons, A. J., Whitham, A. G., Kelly, S. R. A., Vautravers, B. P. H., Dalton, T. J. S., Andrews, S. D., Pickles, C. S., Strogon, D. P., Braham, W., Jolley, D. W. & Gregory, F. J. 2017. Structural evolution and basin architecture of the Trail O region: a record of polyphaser rifting of the east Greenland continental margin. *Geosphere* **13**, 733–70.
- Passey, S. & Hitchen, K. 2011. Cenozoic (igneous). In Ritchie, J. D., Ziska, H., Johnson, H. & Evans, D. (eds) *Geology of the Faroe-Shetland Basin and adjacent areas*, 209–28. British Geological Survey, Nottingham, UK. 317 pp (RR/11/001).
- Passey, S. & Jolley, D. W. 2009. A revised lithostratigraphic nomenclature for the Faroe Islands Basalt Group, NE Atlantic Ocean. *Transaction of the Royal Society of Edinburgh, Earth and Environmental Science* **99**, 127–58.
- Peck, R. M. 1973. Pollen budget studies in a small Yorkshire catchment. In Birks, H. J. B. & West, R. G. (eds) *Quaternary plant ecology*, 43–60. Oxford: Blackwells Scientific Publication.

- Planke, S. 1994. Geophysical response of flood basalts from analysis of wire line logs: ocean drilling program site 642, Vøring volcanic margin. *Journal of Geophysical Research: Solid Earth* **99**, 9279–96.
- Planke, S., Alvestad, E. & Eldholm, O. 1999. Seismic characteristics of basaltic extrusive and intrusive rocks. *The Leading Edge* **18**, 342–48.
- Poppitt, S., Duncan, L. J., Preu, B., Fazzari, F. & Archer, J. 2018. The influence of volcanic rocks on the characterization of the Rosebank Field – new insights from ocean-bottom seismic data and geological analogues integrated through interpretation and modelling. In Bowman, M. & Lyell, B. (eds) *Petroleum geology of NW Europe: 50 years of learning*, 373–84. Proceedings of the 8th Petroleum Geology Conference. London: Geological Society.
- Posamentier, H. W. & Vail, P. R. 1988. Eustatic control on clastic deposition II – sequence and systems tracts models. In Wilgus, C. K. et al. (eds) *Sea level changes: an integrated approach*, 125–54. SEPM Special Publication 42. Broken Arrow, Oklahoma, USA: SEPM Society for Sedimentology.
- Powell, A. J. 1992. Dinoflagellate cysts of the tertiary system. In Powell, A. J. (ed.) *A stratigraphic index of dinoflagellate cysts*, 155–251. London: Chapman & Hall.
- Rateau, R., Schofield, N. & Smith, M. 2013. The potential role of igneous intrusions on hydrocarbon migration, West of Shetland. *Petroleum Geoscience* **19**, 259–72.
- Ritchie, J. D., Ziska, H., Johnson, H. & Evans, D. 2011. *Geology of the Faroe-Shetland Basin and adjacent areas*. Nottingham, UK: British Geological Survey, 317 (RR/11/001).
- Rohrman, M. 2007. Prospectivity of volcanic basins: trap delineation and acreage de-risking. *AAPG bulletin* **91**, 915–39.
- Saunders, A. D., Fitton, J. G., Kerr, A. C., Norry, M. J. & Kent, R. W. 1997. The North Atlantic igneous province. In Maoney, J. J. & Coffin, M. F. (eds) *Large igneous provinces: continental, oceanic and planetary flood volcanism*, 45–93. Geophysical Monograph 100. Washington DC, USA: American Geophysical Union.
- Schofield, N., Holford, S., Millet, J., Brown, D., Jolley, D., Passey, S. R., Muirhead, D., Grove, C., Magee, C., Murray, J., Hole, M., Jackson, C. A.-L. & Stevenson, C. 2015. Regional magma plumbing and emplacement mechanisms of the Faroe-Shetland Sill Complex: implications for magma transport and petroleum systems within sedimentary basins. *Basin Research* 1–23. doi:10.1111/bre.12164.
- Schofield, N., Jolley, D., Holford, S., Archer, S., Watson, D., Hartley, A., Howell, J., Muirhead, D., Underhill, J. & Green, P. 2018. Challenges of future exploration within the UK Rockall Basin. *Petroleum Geology Conference Proceedings* **8**, 211–29.
- Schofield, N. & Jolley, D. W. 2013. Development of intra-basaltic lava-field drainage systems within the Faroe-Shetland Basin. *Petroleum Geoscience* **19**, 273–88.
- Schroder, T. 1992. A palynological zonation for the Paleocene of the North Sea Basin. *Journal of Micropalaeontology* **11**, 113–26.
- Shaw Champion, M. E., White, N. J., Jones, S. M. & Lovell, J. P. B. 2008. Quantifying transient mantle convective uplift: an example from the Faroe-Shetland Basin. *Tectonics* **27**, TC1002. doi:10.129/2007TC002106.
- Sieberg, M., Gernon, T. M., Bull, J. M., Keir, D., Barfod, D. N., Taylor, R. N., Abebe, B. & Ayele, A. 2017. Geological evolution of the Boset-Bericha Volcanic Complex, Main Ethiopian Rift: 40 Ar/ 39 Ar evidence for episodic Pleistocene to Holocene volcanism. *Journal of Volcanology and Geothermal Research* **351**, 115–33.
- Smallwood, J. R. & Gill, C. E. 2002. The rise and fall of the Faroe-Shetland Basin: evidence from seismic mapping of the Balder Formation. *Journal of the Geological Society* **159**, 627–30.
- Sørensen, A. B. 2003. Cenozoic basin development and stratigraphy of the Faroes area. 2003. *Petroleum Geoscience* **9**, 189–207.
- Stoker, M., Holford, S. P. & Hillis, R. R. 2017. A rift-to-drift record of vertical crustal motions in the Faroe-Shetland Basin, NW European margin: establishing constraints on NE Atlantic evolution. *Journal of the Geological Society, London*, **175**, 263–74.
- Stoker, M. & Varming, T. 2011. Cenozoic (sedimentary). In Ritchie, J., Ziska, H., Johnson, H. & Evans, D. (eds) *Geology of the Faroe-Shetland Basin and adjacent areas*. British Geological Survey, Hawthornes, Nottingham, 152–208.
- Storey, M., Duncan, R. A. & Tegner, C. 2007. Timing and duration of volcanism in the North Atlantic Igneous Province: implications for geodynamics and links to the Iceland hotspot. *Chemical Geology* **241**, 264–81.
- Storme, J.-Y., Devleeschouwer, X., Schnyder, J., Cambier, G., Baceta, J. L., Pujalte, V., Di Matteo, A., Lacumin, P. & Yans, J. 2012. The Palaeocene/Eocene Boundary Section at Zumaia (Basque-Cantabric Basin) revisited: new insights from high-resolution magnetic susceptibility and carbon isotope chemostratigraphy on organic matter ($\Delta^{13}C_{org}$): the Palaeocene/Eocene boundary section. *Terra Nova* **24**, 310–17.
- Troll, V. R., Nicoll, G. R., Donaldson, C. H. & Emeleus H. 2008. Dating the onset of volcanism at the Rum Igneous Centre, NW Scotland. *Journal of the Geological Society, London* **165**, 651–59.
- Vieira, M., Mahdi, S. & Alderson, A. 2020. New Selandian species of *Glaphyrocysta* And *Spinidinium* from offshore Northwest Europe. *Review of Palaeobotany and Palynology* **275**. doi:10.1016/j.revpalbo.2020.104170/0034-6667.
- Waagstein, R., Guise, P. & Rex, D. 2002. K/Ar and 39Ar/40Ar whole-rock dating of zeolite facies metamorphosed flood basalts: the upper Paleocene basalts of the Faroe Islands, NE Atlantic. In Jolley, D. W. & Bell, B. R. (eds) *The North Atlantic igneous province: stratigraphy tectonic, volcanic and magmatic processes*, 219–52. London: Geological Society, London, Special Publications 197.
- Watson, D., Schofield, N., Jolley, D., Archer, S., Finlay, A. J., Mark, N., Hardman, J. & Watton, T. 2017. Stratigraphic overview of Palaeogene tuffs in the Faroe-Shetland Basin, NE Atlantic Margin. *Journal of the Geological Society*, 20pp. doi:10.1144/jgs2016-132.
- Wilkinson, C. M., Ganerød, M., Hendricks, B. W. H. & Eide, E. A. 2017. Compilation and appraisal of geochronological data from the North Atlantic Igneous Province (NAIP). In Peron-Pinvidic, G., Hopper, J. R., Stoker, M.S., Gaina, C., Doornanbal, J. C., Funck, T. & Arting, U. E. (eds) *The NE Atlantic region: reappraisal of crustal structure, tectonostratigraphy and magmatic evolution*, 69–103. London: Geological Society of London, Special Publication 447.
- Wilson, R. L., Dagle, P. & Ade-Hall, J. M. 1972. Palaeomagnetism of the British Tertiary Igneous Province: the Skye lavas. *Geophysical Journal of the Royal Astronomical Society* **28**, 285–93.
- Wright, K. A., Davies, R. J., Jerram, D. A., Morris, J. & Fletcher, R. 2012. Applications of seismic and sequence stratigraphic concepts to a lava fed delta system in the Faroe-Shetland Basin, UK and Faroes. *Basin Research* **24**, 91–106.

MS received 5 March 2020. Accepted for publication 13 January 2021. First published online 26 May 2021