

Molecular evidence for hybridization in the aquatic plant *Limosella* on sub-Antarctic Marion Island

JOHN H. CHAU ¹, MICHELLE GREVE ² and BETTINE JANSEN VAN VUUREN ¹

¹Centre for Ecological Genomics and Wildlife Conservation, Department of Zoology, University of Johannesburg, Auckland Park 2006, South Africa

²Department of Plant and Soil Sciences, University of Pretoria, Hatfield 0028, South Africa
jhchau@uw.edu

Abstract: DNA sequence data have become a crucial tool in assessing the relationship between morphological variation and genetic and taxonomic groups, including in the Antarctic biota. Morphologically distinct populations of submersed aquatic vascular plants were observed on sub-Antarctic Marion Island, potentially representing the two species of such plants listed in the island's flora, *Limosella australis* R.Br. (Scrophulariaceae) and *Ranunculus moseleyi* Hook.f. (Ranunculaceae). To confirm their taxonomic identity, we sequenced a nuclear locus (internal transcribed spacer; ITS) and two plastid loci (*trnL-trnF*, *rps16*) from three specimens collected on Marion Island and compared the sequences with those in public sequence databases. For all three loci, sequences from the Marion Island specimens were nearly identical despite morphological dissimilarity, and phylogenetic analyses resolved them to a position in *Limosella*. In phylogenetic trees and comparisons of species-specific sequence polymorphisms, the Marion Island specimens were closest to a clade comprising *Limosella aquatica* L., *L. curdieana* F.Muell. and *L. major* Diels for ITS and closest to *L. australis* for the plastid loci. Cytonuclear discordance suggests a history of hybridization or introgression, which may have consequences for morphological variability and ecological adaptation.

Received 21 September 2020, accepted 5 February 2021

Key words: cytonuclear discordance, gene tree incongruence, introgression, *Limosella aquatica*, *Limosella australis*, *Ranunculus moseleyi*

Introduction

The comparison of DNA sequence data, enabled especially by the availability of sequences in large public sequence databases, can help us to resolve phylogenetic relationships and reveal cryptic taxa, contributing to a broader understanding of evolutionary and ecological patterns and processes (e.g. Ito *et al.* 2016, Webster *et al.* 2020). The unique flora of the remote and isolated sub-Antarctic islands are fairly well characterized (e.g. Green & Walton 1975, Lord 2015, Chau *et al.* 2020, Siljak-Yakovlev *et al.* 2020). However, although some molecular phylogenetic studies have been conducted (e.g. Wagstaff *et al.* 2011, Lehnebach *et al.* 2017), the evolutionary origins of many of the constituent species remain obscure.

Marion Island (46.9°S, 37.75°E) is one of two volcanic islands in the Prince Edward Island archipelago in the southern Indian Ocean, ~1770 km south-east of South Africa. Low herbaceous vegetation covers much of the island below the high unvegetated peaks, growing in the

cool, wet conditions that characterize the sub-Antarctic terrestrial region (Smith & Mucina 2006). Due to high precipitation, aquatic habitats, including mires, streams, lakes and rock pools, are common throughout the lowlands of the island (Hänel & Chown 1998). Although several species of mosses and vascular plants grow on saturated substrates or are emergent or floating-leaved in standing water, only two species listed in the vascular plant flora grow submersed on the bottom of waterbodies, namely *Limosella australis* R.Br. (Scrophulariaceae) and *Ranunculus moseleyi* Hook.f. (Ranunculaceae) (Gremmen & Smith 2008). *Limosella australis* was first recorded on Marion Island by botanist Brian Huntley during the first extensive floristic survey of the island on the 1965–1966 South African Biological and Geological Expedition to Marion and Prince Edward Islands (Huntley 1971) and has been collected sporadically since then. *Ranunculus moseleyi* was also first recorded on Marion Island during the 1965–1966 Expedition (Huntley 1971), but only one herbarium specimen of this species from Marion Island is

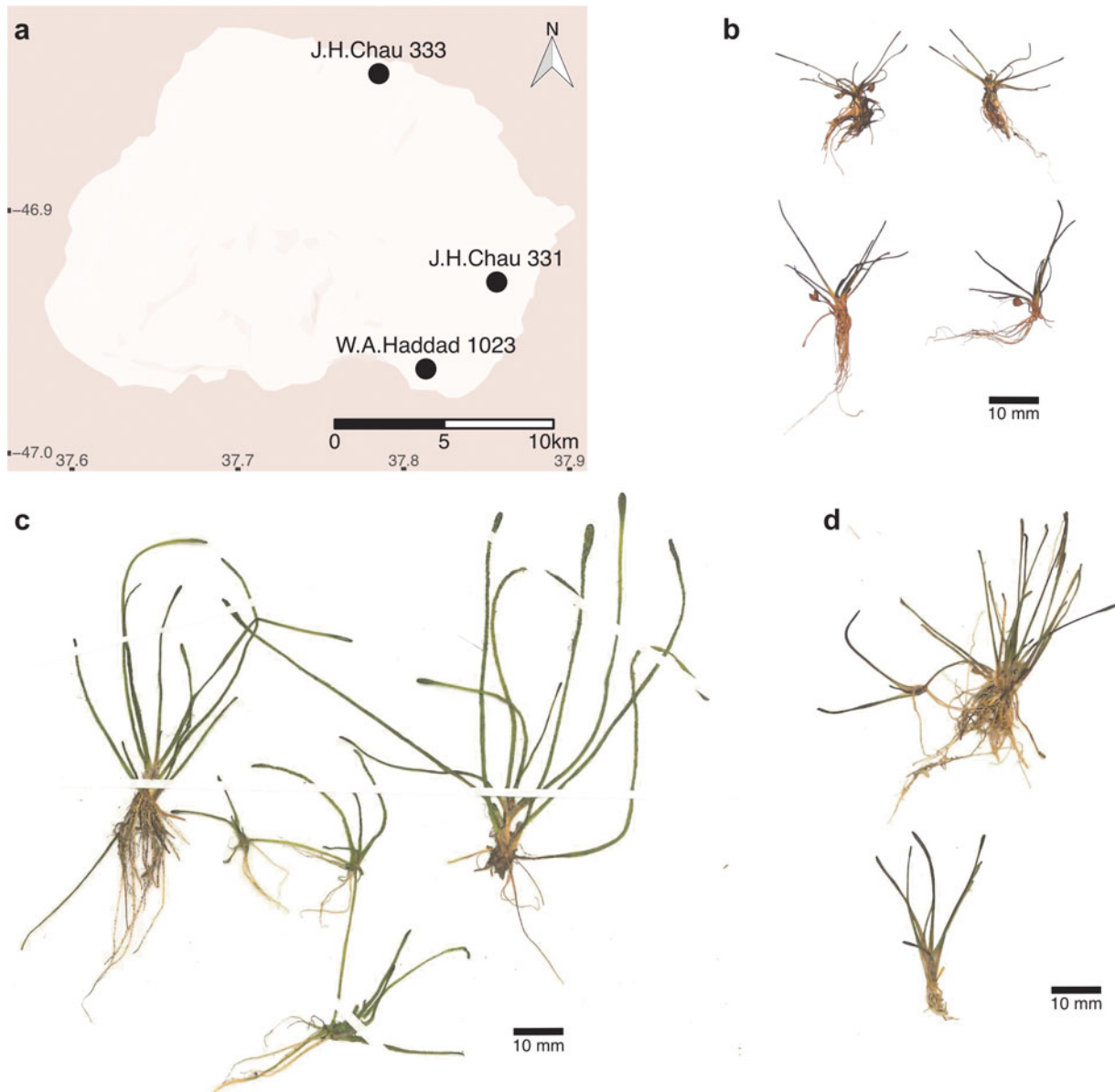


Fig. 1. Distribution and morphology of sampled *Limosella* specimens from Marion Island. **a.** Collection localities on Marion Island. **b.** J.H. Chau 331 **c.** J.H. Chau 333 **d.** W.A. Haddad 1023.

Table I. Collection and voucher information for sampled specimens from Marion Island and GenBank accession numbers for sequences. ITS = internal transcribed spacer; PRU = University of Pretoria herbarium.

Voucher (herbarium)	Latitude (°)	Longitude (°)	Habitat	Collection date	ITS	<i>trnL-trnF</i>	<i>rps16</i>
J.H. Chau 331 (PRU)	-46.92948	37.85606	Shallow pool on grey lava among grassy plains	17 April 2018	MW035093	MW030526	-
J.H. Chau 333 (PRU)	-46.84356	37.78494	Shallow water near lake shore, muddy bottom	29 April 2018	MW035092	MW030525	MW030523
W.A. Haddad 1023 (PRU)	-46.96528	37.81333	In a small pool of fresh water, older black lava, submerged	21 April 2015	MW035094	MW030527	MW030524

known to exist (B.J. Huntley 1568, AAS) and its current occurrence there has been put in doubt (Lehnebach *et al.* 2017, Chau *et al.* 2020).

During the South African National Antarctic Programme relief voyage to Marion Island in April 2018, two morphologically distinct populations of

submersed aquatic plants were observed, one growing in small rock pools and the other in the nearshore of a large lake. Specimens examined from the populations were past flower or sterile, but the vegetative characters of the rock pool population conformed to the description for *L. australis*, with small linear leaves (Cook 2004). The other population from the lake resembled the description of *R. moseleyi*, with longer leaves differentiated into petiole and blade (Hooker 1879). In this study, we aimed to clarify the taxonomic identities of these two forms of submersed aquatic plants on Marion Island through genetic sequencing of nuclear and plastid loci and comparison of sequences with those in public sequence databases.

Materials and methods

Sampling

Specimens from two populations of submersed aquatic vascular plants were collected on Marion Island in April 2018 (Fig. 1a & Table I). Leaf tissues were preserved on silica gel and voucher specimens were deposited at the University of Pretoria herbarium (PRU). The two populations differed in vegetative morphology and habitat. In one population, small plants with linear leaves < 25 mm long grew submersed in a small, shallow rock pool on grey lava (J.H. Chau 331; Fig. 1b). In the other population, larger plants with leaves that were linear or had a long petiole and small spatulate blade (up to 80 mm long in total) grew submersed on the muddy nearshore of the large lake Prinsloo Meer (J.H. Chau 333; Fig. 1c). We also sampled a herbarium specimen determined as *L. australis* with linear leaves, some with a slightly spatulate tip, collected from a small pool on black lava on Marion Island (W.A. Haddad 1023; Fig. 1d).

Molecular methods and analyses

Total genomic DNA was extracted from dried leaf tissue using a modified cetyltrimethylammonium bromide (CTAB) protocol (Doyle & Doyle 1987). Three loci were chosen for sequencing based on the availability of sequences from *Limosella* and *Ranunculus* in public sequence repositories and their ability to resolve interspecific relationships in these groups (Ito *et al.* 2017, Lehnebach *et al.* 2017). The nuclear ribosomal internal transcribed spacer (ITS) region was amplified using the primers AB101 and AB102 (Robinson *et al.* 2001). The plastid *trnL-trnF* intergenic region and *rps16* intron were amplified with the primers c and f (Taberlet *et al.* 1991) or *rpsF* and *rpsR2* (Oxelman *et al.* 1997), respectively. Polymerase chain reaction (PCR) amplification was conducted in a thermocycler using the PCR programme

in Zietsman *et al.* (2009) and an annealing temperature of 50–52°C. PCR amplicons were cleaned before use as templates in cycle sequencing reactions with the same primers used in PCR to sequence both forward and reverse directions. Cycle sequencing products were read on an ABI 3730 Genetic Analyzer at the Stellenbosch University Central Analytical Facilities DNA Sequencing Unit (Stellenbosch, South Africa).

Sequence chromatograms were checked for quality and assembled into contigs in *Geneious* v9.1.6 (Biomatters), from which consensus sequences were extracted. Each consensus sequence was queried in a Basic Local Alignment Search Tool (BLAST) search against the National Center for Biotechnology Information (NCBI) GenBank nucleotide collection database (accessed 9 October 2019). Sequences of the top 100 BLAST search hits as sorted by bit score were retrieved. Additional sequences of the three loci from *Limosella* in the NCBI GenBank nucleotide database were identified by searching the terms 'Limosella' and 'ITS', 'trnL' or 'rps16', and any sequences that were missing from the BLAST search results were retrieved. These sequences, together with the sequences from the Marion Island specimens, were aligned using *MAFFT* v7 with default parameters (Katoh & Standley 2013). Phylogenetic trees were inferred with each sequence matrix under the maximum likelihood optimality criterion using *RAxML* v8.2 (Stamatakis 2014) under the generalized time-reversible (GTR)+gamma model of nucleotide substitution with support values obtained from 100 rapid bootstrap replicates. Trees were rooted according to phylogenetic relationships inferred for Scrophulariaceae in Oxelman *et al.* (2005). We also inferred a phylogenetic tree from a concatenated plastid dataset comprising all Marion Island samples and samples of *Limosella aquatica*, *Limosella australis*, *Limosella curdieana* and *Limosella major* having sequences of both *trnL-trnF* and *rps16* using the analysis parameters above. As an additional line of evidence, for each locus, species-specific polymorphisms (i.e. sites that are variable between species but fixed within species) were identified and compared with the sequences from Marion Island specimens.

Results

The nuclear ITS locus was successfully sequenced in all three sampled Marion Island specimens, with the total length of the consensus sequence ranging from 516 to 751 bp. We also sequenced the plastid locus *trnL-trnF* in all three specimens with lengths ranging from 915 to 944 bp, and *rps16* in two specimens (J.H. Chau 331 could not be amplified) with lengths ranging from 877 to 886 bp. For all loci, sequences from all three Marion

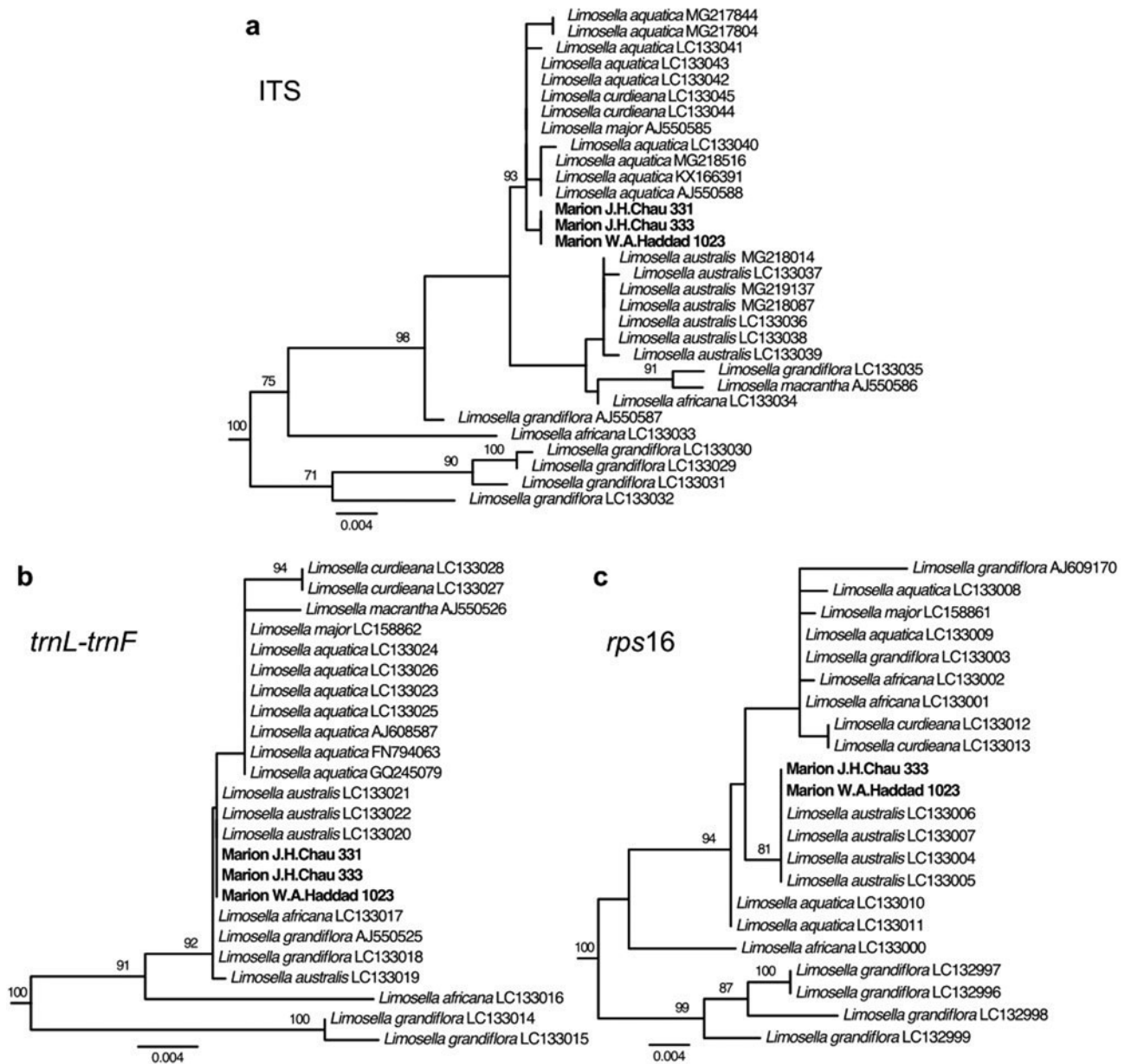


Fig. 2. Phylogenetic trees from maximum likelihood analyses of DNA sequence data from Marion Island specimens and from the National Center for Biotechnology Information (NCBI) GenBank database. Taxa outside *Limosella* have been pruned from trees. Species and GenBank accession numbers are shown at the tips. Bootstrap support values for nodes > 70% are shown on the branches. **a.** Nuclear internal transcribed spacer (ITS); **b.** plastid *trnL-trnF*; **c.** plastid *rps16*.

Island specimens were identical where they overlapped, except for *trnL-trnF*, in which the specimen W.A. Haddad 1023 had a duplication of 16 bp in length. Sequences are deposited in GenBank (Table I).

For all three loci, the most similar BLAST search hits in the NCBI GenBank database to the Marion Island specimens were from *Limosella*, with the remaining top hits being from other genera in the family Scrophulariaceae. Phylogenetic analyses placed the Marion Island specimens within a clade comprising only

and all *Limosella* accessions with very strong support (bootstrap percentage (BP) = 100%) for all three loci (Figs 2 & S1–S3). More narrowly, for ITS, the Marion Island specimens were in a strongly supported clade (BP = 93%) with accessions of *L. aquatica* L., *L. curdieana* F.Muell. and *L. major* Diels (Figs 2a & S1). For *trnL-trnF*, relationships within the *Limosella* clade in general had weak support, largely as a result of relatively few characters supporting branching patterns (i.e. short branch lengths). The Marion Island specimens

Table II. Species-specific sequence polymorphisms in the *Limosella aquatica* clade (*L. aquatica*, *L. curdieana*, *L. major*), *L. australis* and Marion Island specimens in the nuclear internal transcribed spacer (ITS) locus, listed by their position in the sequence alignment. The number of sequences examined for each species or clade is given in parentheses.

ITS	471	516	543	575–576	577	579	619	637	652	655	672
<i>L. aquatica</i> (12)	C	G	T	-	C	T	A	G	C	C	C
<i>L. australis</i> (7)	A	T	T	AA	A	G	G	-	-	G	T
Marion Island (3)	C	G	C	-	C	T	A	G	C	C	C

Table III. Species-specific sequence polymorphisms in the *Limosella aquatica* clade (*L. aquatica*, *L. curdieana*, *L. major*), *L. australis* and Marion Island specimens in the plastid *trnL-trnF* locus, listed by their position in the sequence alignment. The number of sequences examined for each species or clade is given in parentheses.

<i>trnL-trnF</i>	348	540
<i>L. aquatica</i> (10)	A	-
<i>L. australis</i> (4)	G	A
Marion Island (3)	G	A

Table IV. Species-specific sequence polymorphisms in the *Limosella aquatica* clade (*L. aquatica*, *L. curdieana*, *L. major*), *L. australis* and Marion Island specimens in the plastid *rps16* locus, listed by their position in the sequence alignment. The number of sequences examined for each species or clade is given in parentheses.

<i>rps16</i>	509	656 ^a	745–753
<i>L. aquatica</i> (7)	-	A	-
<i>L. australis</i> (4)	A	-	ATATTAGAA
Marion Island (2)	A	-	ATATTAGAA

^a At this position, *L. curdieana* (two sequences) and *L. major* (one sequence) share the same sequence variant as *L. australis* instead of *L. aquatica*.

were in a slightly narrower well-supported clade with accessions of *L. africana* Glück, *L. aquatica*, *L. australis*, *L. curdieana*, *L. grandiflora* Benth., *L. macrantha* R.E.Fr. and *L. major*, but a poorly supported clade comprising *L. aquatica*, *L. curdieana*, *L. macrantha* and *L. major* excluded the Marion Island specimens (Figs 2b & S2). For *rps16*, the Marion Island specimens were in a strongly supported clade (BP = 81%) with accessions of *L. australis* (Figs 2c & S3). The concatenated plastid tree similarly placed the Marion Island specimens in a strongly supported clade (BP = 100%) with *L. australis* (Fig. S4).

Based on our phylogenetic results, we focused our examination of species-specific sequence polymorphisms on the clade comprising the species *L. aquatica*, *L. curdieana* and *L. major* (hereafter termed the *L. aquatica* clade) vs *L. australis*. For ITS, we retrieved from the GenBank database nine sequences for *L. aquatica*, two sequences for *L. curdieana*, one sequence for *L. major* and seven sequences for *L. australis* (Table SI). There were seven single-nucleotide polymorphisms (SNPs) and three

insertions/deletions (indels) that were fixed within the *L. aquatica* clade and *L. australis*, but differed between them. The Marion Island sequences matched that of the *L. aquatica* clade at all of these variant sites and additionally had one unique SNP that differentiated the Marion Island sequences from both the *L. aquatica* clade and *L. australis* (Table II). For *trnL-trnF*, we retrieved seven sequences for *L. aquatica*, two sequences for *L. curdieana*, one sequence for *L. major* and four sequences for *L. australis* (Table SI). One SNP and one indel were fixed within the *L. aquatica* clade and *L. australis*, but differed between them. The Marion Island sequences matched that of *L. australis* at these two variant sites (Table III). For *rps16*, we retrieved four sequences for *L. aquatica*, two sequences for *L. curdieana*, one sequence for *L. major* and four sequences for *L. australis* (Table SI). There were two indels that were fixed within the *L. aquatica* clade and *L. australis*, but differed between them. The Marion Island sequences matched that of *L. australis* at these two positions. In addition, there was one indel variant that was fixed within *L. aquatica* only, with a different allele found in *L. australis*, *L. curdieana* and *L. major*. In this case, the Marion Island sequences matched those of *L. australis*, *L. curdieana* and *L. major* (Table IV).

Discussion

Identification of specimens from Marion Island

Genetic evidence unequivocally identifies all of our specimens (J.H. Chau 331, J.H. Chau 333, W.A. Haddad 1023) of submersed aquatic plants from Marion Island as members of the genus *Limosella*. The specimens are nearly identical genetically, despite differing vegetative morphologies. Loci from the plastid genome (*trnL-trnF*, *rps16*) place the Marion Island specimens as members of *L. australis*, which is the only species of *Limosella* currently recognized in the flora of Marion Island (Gremmen & Smith 2008, Chau *et al.* 2020). However, a nuclear locus (ITS) places the specimens in a clade with *L. aquatica*, *L. curdieana* and *L. major*. As the chloroplast is typically contributed only by the female gamete, this suggests that the maternal lineage of the Marion Island specimens is *L. australis*, while ancestry from the *L. aquatica* clade is also present.

Evidence of cytonuclear discordance suggests that *Limosella* on Marion Island has a history of hybridization or introgression. Discrepancy in the phylogenetic position of specimens between plastid and nuclear gene trees has been interpreted as evidence of hybridization in other plants, including aquatic groups (Tippery & Les 2011, Ito *et al.* 2016). Other possible causes of gene tree incongruence include incomplete lineage sorting and paralogous genes (Maddison 1997). However, the fact that a clear pattern of incongruence is found only in the Marion Island specimens suggests that it reflects an evolutionary event specific to the Marion Island population, rather than more species-wide phenomena such as the retention of ancestral polymorphisms or gene duplication. The other *L. australis* sequences from public sequence databases included in our analyses come from specimens from New Zealand, the Falkland Islands/Malvinas, Ecuador and Canada, while the sequences of *L. aquatica* are from North American, European and Asian specimens, the sequences of *L. curdieana* come from Australian specimens and the sequences of *L. major* are from African specimens (Table SI). In no other sequences from these widely dispersed specimens did we see the same pattern of gene tree incongruence reported here for the Marion Island specimens.

The vegetative morphology of the Marion Island specimens shows characteristics of both putative parental species, *L. australis* and a member of the *L. aquatica* clade. The leaves of *L. australis* are linear, without a distinct blade, cylindrical and typically up to 30 mm long and 2 mm wide (Cook 2004, Crow & Hellquist 2005, Barringer 2019). The leaves of *L. aquatica* are flat, with a distinct petiole (up to 100 mm) and a lanceolate to spatulate blade (up to 30 mm long and 30 mm wide) (Crow & Hellquist 2005, Barringer 2019). The leaves of *L. curdieana* and *L. major* are similarly differentiated into petiole and blade (Cook 2004, Ito *et al.* 2017). The different specimens of *Limosella* on Marion Island encompass these two forms, with J.H. Chau 331 fitting the description of *L. australis* with short, linear leaves, J.H. Chau 333 fitting the description of *L. aquatica* with longer leaves with a small spatulate blade and W.A. Haddad 1023 being intermediate with linear leaves, some with a slightly broader tip. The different forms of *Limosella* on Marion Island may be due to phenotypic plasticity. The specimens with linear leaves were found growing in small rock pools, whereas the larger specimen with leaves with a differentiated blade was from the nearshore of Prinsloo Meer, a large coastal lake adjacent to a king penguin colony. The waters of Prinsloo Meer are likely to be more nutrient-rich compared to those in rock pools, allowing plants in the former to grow larger leaves with greater differentiation of the blade and petiole. In addition, the habitats varied in water depth, which may affect the

development of leaf size and shape. In the greater depths of Prinsloo Meer, plants are consistently submersed and may have access to less light compared to the plants in rock pools, which are very shallow and may occasionally leave plants only partially submersed. It is also possible that genetic variability in a hybrid population results in different genetically determined vegetative morphology, although we detected almost no genetic variation among specimens in the three loci we sequenced. Another possible explanation for the different morphological forms is that they represent different developmental stages. In *L. aquatica* × *L. subulata* E.Ives (= *L. australis*) hybrids reported from Great Britain, the leaves were intermediate in shape compared to the parental species, showed considerable variation and displayed developmental changes in morphology, being 'successively subulate and lanceolate-spathulate with a long petiole' (Vachell & Blackburn 1939). The age of our specimens from Marion Island are unknown; however, the smaller specimen with linear leaves (J.H. Chau 331) appeared to have fruits and thus to be reproductively mature. Experimental studies in common gardens and a more thorough survey of *Limosella* on Marion Island would illuminate the causes of morphological variation in the population.

The ploidy level of *L. australis* has been reported as diploid ($2n = 20$), whereas *L. aquatica* is tetraploid ($2n = 40$) (Vachell & Blackburn 1939, Les 2018). In *L. aquatica* × *L. australis* hybrids reported from Great Britain, the intermediate triploid ($2n = 30$) condition was seen (Vachell & Blackburn 1939). Cytogenetic studies of the plants on Marion Island should be conducted to further elucidate the putative history of hybridization or introgression in the population.

Evolutionary implications of hybridization

The timing of hybridization with respect to the arrival of *Limosella* on Marion Island is unknown. We found no specimens on Marion Island that are purely *L. australis* or *L. aquatica* with all loci unanimously aligning with one species, although more extensive sampling on the island should be conducted to confirm their absence. This makes it unlikely that hybridization is occurring presently on Marion Island. However, it is possible that both species arrived on Marion Island in the past and formed hybrids before populations of the parental species declined. *Limosella australis* is currently distributed in several other sub-Antarctic islands, South America, eastern North America, Great Britain, Australia, New Zealand and possibly southern Africa (Cook 2004, Ito *et al.* 2017, Barringer 2019, <https://vicflora.rbg.vic.gov.au>). The distribution of *L. aquatica* spans northern South America, North America, northern Africa, Europe and Asia (Ito *et al.* 2017, Barringer 2019), while *L. curdieana* is found in Australia

and New Zealand (<https://vicflora.rbg.vic.gov.au>) and *L. major* is in eastern and southern Africa (Cook 2004, Ito *et al.* 2017). Areas of overlap between the range of *L. australis* and the ranges of *L. aquatica*, *L. curdieana* and *L. major*, where hybrids may have formed and whence dispersed to the sub-Antarctic, include parts of South America and North America, Great Britain, Australia, New Zealand and possibly southern Africa. In fact, a population of *L. aquatica* × *L. australis* hybrids has been identified in Wales, Great Britain, based on intermediate morphology and karyotype (Vachell & Blackburn 1939).

Hybridization has been proposed as a mechanism for adaptation to novel and marginal habitats and the evolution of traits such as invasiveness (Ellstrand & Schierenbeck 2000, Kawecki 2008). In *L. aquatica* × *L. australis* hybrids from Great Britain, greater vegetative vigour, more rapid growth and better winter survival were observed compared to the parental species, though the hybrids were sterile (Vachell & Blackburn 1939, Stace 1975). The genetic variation and novelty created by hybridization may have contributed to the ability of the *Limosella* population on Marion Island to establish and grow, but this hypothesis should be further tested with common garden experiments with plants from Marion Island and species from other areas. If hybrids are sterile, *Limosella* is still able to reproduce clonally by producing runners and stolons (Cook 2004), through which heterosis in hybrid genotypes could be maintained and propagated (Ellstrand & Schierenbeck 2000). Although a specimen of *Limosella* was found with what appeared to be fruits (J.H. Chau 331), no seeds were observed and it is unknown whether any viable gametes were produced. Asexual reproduction and high vagility of vegetative propagules, which are especially common in aquatic plants, may allow for greater persistence and spread of hybrid individuals in these plants (Les & Philbrick 1993). Although there are few records of hybrid plants in the sub-Antarctic (e.g. *Acaena decumbens* × *tenera* on South Georgia, Walton & Greene 1971), more focused surveys and studies on the prevalence of hybrids in the sub-Antarctic flora, as well as other groups of organisms, would shed light on the importance of this evolutionary phenomenon in such an extreme environment.

Taxonomic and biogeographical perspectives

Morphological variation and phylogenetic incongruence in the *Limosella* specimens from Marion Island add to the need for a contemporary revision of the taxonomy of the genus in the sub-Antarctic and globally. The species *L. australis*, including its application to sub-Antarctic specimens, had previously been synonymized as a variety of *L. aquatica* (var. *tenuifolia* Hook.f.) partly because leaf shape, a character used for differentiating the two species, was thought to be too variable, with the range of leaf

shapes displayed in *L. aquatica* encompassing the subulate form of *L. australis* (Hooker 1847, Hearn 1901). Later botanists disagreed, recognizing discontinuities in the morphological range, and reinstated *L. australis* as a distinct species (Pearsall 1934). The specimens on Marion Island demonstrate that within apparently genetically homogeneous populations, morphological variability can exist in traits often used in species identification. Cytonuclear discordance has also been detected in another species of *Limosella*, *L. macrantha*, from tropical Africa, in which plastid DNA placed it with *L. major*, while nuclear ITS resolved it as sister to an accession of *L. africana* (Ito *et al.* 2017). As a whole, the genus *Limosella* was last comprehensively treated in the early twentieth century (Glück 1934). A recent molecular phylogenetic study including 8 of 12–15 recognized species clarified some relationships (Ito *et al.* 2017), but with unresolved ambiguity in the geographical distribution, morphological range and taxonomic circumscription of species, a global revision of the group is necessary (Cook 2004, Smithies 2006, Les 2018, Barringer 2019).

Limosella australis is also recorded in the floras of other Southern Ocean islands, including the Falklands/Malvinas, Prince Edward, Crozet, Kerguelen and Auckland islands (Lord 2015). In a global study of the species, all examined specimens from the Southern Ocean, including from Crozet, Kerguelen and Auckland islands, were placed in *L. australis*, based on the morphology of the style, which was claimed to be the only character consistently separating the species from *L. aquatica* (Lourteig 1964). *Limosella* specimens from Kerguelen were determined to have a ploidy of 6× ($2n = 60$), which is double the chromosome number of *L. australis* × *L. aquatica* hybrids from Great Britain (3×, $2n = 30$), suggesting that this sub-Antarctic population may be an allopolyploid (Vachell & Blackburn 1939, Siljak-Yakovlev *et al.* 2020). Additional genetic studies on plants from the other islands should be conducted in order to determine whether the hybrid lineage is endemic to Marion Island or found in other parts of the sub-Antarctic and to resolve the relationship of the Marion Island population with other populations, which would shed light on patterns of biogeographical connections in the sub-Antarctic region.

Status of Ranunculus moseleyi on Marion Island

None of our specimens of submersed aquatic plants were identified as *Ranunculus* based on genetic data, even though the vegetative morphology of some specimens (J.H. Chau 333) fits the species description of *R. moseleyi*: 'narrow, linear leaves, sometimes spatulate at the ends' (Gremmen & Smith 2004). However, this morphology could also match that of *L. aquatica* or possibly even *L. australis*. It has been noted that in the flora of the

Prince Edward Islands and Kerguelen Island, *R. moseleyi* and *Limosella* are very easily confused if flowers or fruits are not present (Gremmen & Smith 2004). The absence of *R. moseleyi* among our specimens adds weight to the lack of current evidence for the presence of the species on Marion Island. We know of only one herbarium specimen of *R. moseleyi* from Marion Island, from the 1965–1966 South African Biological and Geological Expedition to Marion Island (B.J. Huntley 991, AAS). The presence of aggregates of follicular fruits confirms this determination. The only other specimen we found that had a determination of *R. moseleyi* on the label (B.J. Huntley 2048, PRE), also from the 1965–1966 Expedition, later had its determination changed to *L. australis*, which is consistent with the presence of capsular fruits, as in *Limosella* but not *Ranunculus*, on the specimen. Smith & Mucina (2006) noted that the last record of *R. moseleyi* on Marion Island was in 1987, but we are not aware of any other vouchers for which taxonomic identification can be confirmed. In more recent floristic surveys on the island, *R. moseleyi* has not been found (Raath-Krüger *et al.* 2019, P. le Roux, personal communication 2020), and the species was left off a recent plant list for Marion Island (Chau *et al.* 2020).

Supplementary material

One supplemental table and four supplemental figures can be found at <https://doi.org/10.1017/S0954102021000079>

Acknowledgements

We acknowledge the South African National Antarctic Program (SANAP) and the Department of Environmental Affairs for logistical support on the relief voyage to Marion Island. Permission to collect was granted by the Department of Environmental Affairs (permit number 1/2013). We thank the herbaria at the University of Pretoria (PRU) and the South African National Biodiversity Institute (PRE) for access to specimens, and we thank Peter le Roux and Elsa van Ginkel for helpful discussions about the plants on Marion Island. We appreciate helpful comments from the editor and two reviewers that improved our manuscript.

Author contributions

JHC and MG did the fieldwork and sampling. JHC performed the laboratory work and data analyses and wrote the manuscript with support and assistance from MG and BJvV.

Financial support

We gratefully acknowledge financial support from the National Research Foundation (SANAP grants 110728 and 110734).

Details of data deposit

DNA sequences are available on GenBank under the accession numbers in Table I.

References

- BARRINGER, K.A. 2019. *Limosella*. In *FLORA OF NORTH AMERICA EDITORIAL COMMITTEE, ed. Flora of North America North of Mexico, volume 17*. Oxford: Oxford University Press, 338–339.
- CHAU, J.H., MTSI, N.I.S., MÜNBERGOVÁ, Z., GREVE, M., LE ROUX, P.C., MAIRAL, M., *et al.* 2020. An update on the indigenous vascular flora of sub-Antarctic Marion Island: taxonomic changes, sequences for DNA barcode loci, and genome size data. *Polar Biology*, **43**, 10.1007/s00300-020-02747-7.
- COOK, C.D.K. 2004. *Aquatic and wetland plants of southern Africa*. Leiden: Backhuys Publishers, 281 pp.
- CROW, G.E. & HELLQUIST, C.B. 2005. *Aquatic and wetland plants of northeastern North America, volume II: Angiosperms: Monocotyledons*. Madison, WI: University of Wisconsin Press, 464 pp.
- DOYLE, J.J. & DOYLE, J.L. 1987. A rapid DNA isolation procedure for small amounts of fresh leaf tissue. *Phytochemical Bulletin*, **19**, 11–15.
- ELLSTRAND, N.C. & SCHIERENBECK, K.A. 2000. Hybridization as a stimulus for the evolution of invasiveness in plants? *Proceedings of the National Academy of Sciences of the United States of America*, **97**, 7043–7050.
- GLÜCK, H. 1934. Novae species et varietates generis *Limosellae*. *Notizblatt des Botanischen Gartens und Museums zu Berlin-Dahlem*, **12**, 71–78.
- GREENE, S.W. & WALTON, D.W.H. 1975. An annotated check list of the sub-Antarctic and Antarctic vascular flora. *Polar Record*, **17**, 473–484.
- GREMMEN, N.J.M. & SMITH, V.R. 2004. *The flora of Marion and Prince Edwards Islands*. Diever: Data Analyse Ecologie, CD-ROM.
- GREMMEN, N.J.M. & SMITH, V.R. 2008. Terrestrial vegetation and dynamics & Appendix IV. Vascular plants of the Prince Edward Islands. In CHOWN, S.L. & FRONEMAN, P.W., eds. *The Prince Edward Islands. Land-sea interactions in a changing ecosystem*. Stellenbosch: Sun Press, 215–244 & 390–392.
- HÄNEL, C. & CHOWN, S. 1998. *An introductory guide to the Marion and Prince Edward Island Special Nature Reserves 50 years after annexation*. Pretoria: Department of Environmental Affairs and Tourism, 80 pp.
- HEARN, M.A. 1901. *Limosella aquatica* L. var. *tenuifolia* Hook. f. *Journal of Botany, British and Foreign*, **39**, 336–339.
- HOOKE, J.D. 1847. *The botany of the Antarctic Voyage of H.M. Discovery ships Erebus and Terror in the years 1839–1843*. London: Reeve, Brothers, 334 pp.
- HOOKE, J.D. 1879. Enumeration of the plants hitherto collected in Kerguelen Island by the 'Antarctic,' 'Challenger,' and 'British Transit of Venus' expeditions. I. Flowering plants, ferns, Lycopodiaceae, and Characeae. *Philosophical Transactions of the Royal Society*, **168**, 17–23.
- HUNTLEY, B.J. 1971. Vegetation. In VAN ZINDEREN BAKKER, E.M., WINTERBOTTOM, J.M. & DYER, R.A., eds. *Marion and Prince Edward Islands: report on the South African biological & geological expedition, 1965–1966*. Cape Town: A. A. Balkema, 98–160.
- ITO, Y., ROBLEDO, G.L., IHARLEGUI, L. & TANAKA, N. 2016. Phylogeny of *Potamogeton* (Potamogetonaceae) revisited: implications for hybridization and introgression in Argentina. *Bulletin of the National Museum of Natural Science, Series B*, **42**, 131–141.
- ITO, Y., TANAKA, N., ALBACH, D.C., BARFOD, A.S., OXELMAN, B. & MUASYA, A.M. 2017. Molecular phylogeny of the cosmopolitan aquatic plant genus *Limosella* (Scrophulariaceae) with a particular focus on the origin of the Australasian *L. curdieana*. *Journal of Plant Research*, **130**, 107–116.

- KATO, K. & STANDLEY, D.M. 2013. *MAFFT* multiple sequence alignment software version 7: improvements in performance and usability. *Molecular Biology and Evolution*, **30**, 772–780.
- KAWECKI, T.J. 2008. Adaptation to marginal habitats. *Annual Review of Ecology, Evolution, and Systematics*, **39**, 321–342.
- LEHNEBACH, C.A., WINKWORTH, R.C., BECKER, M., LOCKHART, P.J. & HENNION, F. 2017. Around the pole: evolution of sub-Antarctic *Ranunculus*. *Journal of Biogeography*, **44**, 875–886.
- LES, D.H. 2018. *Aquatic dicotyledons of North America: ecology, life history, and systematics*. Boca Raton, FL: CRC Press, 1350 pp.
- LES, D.H. & PHILBRICK, C.T. 1993. Studies of hybridization and chromosome number variation in aquatic angiosperms: evolutionary implications. *Aquatic Botany*, **44**, 181–228.
- LORD, J.M. 2015. Patterns in floral traits and plant breeding systems on Southern Ocean Islands. *AoB PLANTS*, **7**, plv095.
- LOURTEIG, A. 1964. Étude sur *Limosella* L. *CNFRA-Biologie*, **1**, 165–173.
- MADDISON, W.P. 1997. Gene trees in species trees. *Systematic Biology*, **46**, 523–536.
- OXELMAN, B., LIDÉN, M. & BERGLUND, D. 1997. Chloroplast *rps16* intron phylogeny of the tribe Sileneae (Caryophyllaceae). *Plant Systematics and Evolution*, **206**, 393–410.
- OXELMAN, B., KORNHALL, P., OLMSTEAD, R.G. & BREMER, B. 2005. Further disintegration of Scrophulariaceae. *Taxon*, **54**, 411–425.
- PEARSALL, W.H. 1934. *Limosella subulata* Ives. [= *Limosella tenuifolia* Nuttall.]: appearance of *L. subulata* in England. *The Botanical Society and Exchange Club of the British Isles*, **10**, 885–889.
- RAATH-KRÜGER, M.J., MCGEOCH, M.A., SCHÖB, C., GREVE, M. & LE ROUX, P.C. 2019. Positive plant-plant interactions expand the upper distributional limits of some vascular plant species. *Ecosphere*, **10**, 10.1002/ecs2.2820.
- ROBINSON, J.P., HARRIS, S.A. & JUNIPER, B.E. 2001. Taxonomy of the genus *Malus* Mill. (Rosaceae) with emphasis on the cultivated apple, *Malus domestica* Borkh. *Plant Systematics and Evolution*, **226**, 35–58.
- SILJAK-YAKOVLEV, S., LAMY, F., TAKVORIAN, N., VALENTIN, N., GOUESBET, V., HENNION, F. & ROBERT, T. 2020. Genome size and chromosome number of ten plant species from Kerguelen Islands. *Polar Biology*, **43**, 1985–1999.
- SMITH, V.R. & MUCINA, L. 2006. Vegetation of subantarctic Marion and Prince Edward Islands. In MUCINA, L. & RUTHERFORD, M.C., eds. *The vegetation of South Africa, Lesotho and Swaziland*. Pretoria: SANBI, 698–723.
- SMITHIES, S.J. 2006. Scrophulariaceae. In GERMISHUIZEN, G., MEYER, N.L., STEENKAMP, Y. & KEITH, M., eds. *A checklist of South African plants. Southern African Botanical Diversity Network Report No. 41*. Pretoria: SABONET, 775–822.
- STACE, C.A. 1975. *Limosella* L. In STACE, C.A., ed. *Hybridization and the flora of the British Isles*. London: Academic Press, 370–371.
- STAMATAKIS, A. 2014. *RAxML* version 8: a tool for phylogenetic analysis and post-analysis of large phylogenies. *Bioinformatics*, **30**, 1312–1313.
- TABERLET, P., GIELLY, L., PAUTOU, G. & BOUVET, J. 1991. Universal primers for amplification of three non-coding regions of chloroplast DNA. *Plant Molecular Biology*, **17**, 1105–1109.
- TIPPERY, N.P. & LES, L.H. 2011. Evidence for the hybrid origin of *Nymphoides montana* Aston (Menyanthaceae). *Telopea*, **13**, 285–294.
- VACHELL, E. & BLACKBURN, K.B. 1939. The *Limosella* plants of Glamorgan. *Journal of Botany, British and Foreign*, **77**, 65–71.
- WAGSTAFF, S.J., BREITWIESER, I. & ITO, M. 2011. Evolution and biogeography of *Pleurophyllum* (Astereae, Asteraceae), a small genus of megaherbs endemic to the subantarctic islands. *American Journal of Botany*, **98**, 62–75.
- WALTON, D.W.H. & GREENE, S.W. 1971. The South Georgian species of *Acaena* and their probable hybrid. *BAS Bulletin*, No. **25**, 29–44.
- WEBSTER, H.J., EMAMI-KHOYI, A., VAN DYK, J.C., TESKE, P.R. & JANSEN VAN VUUREN, B. 2020. Environmental DNA metabarcoding as a means of estimating species diversity in an urban aquatic ecosystem. *Animals*, **10**, 2064.
- ZIETSMAN, J., DREYER, L.L. & JANSEN VAN VUUREN, B. 2009. Genetic differentiation in *Oxalis* (Oxalidaceae): a tale of rarity and abundance in the Cape Floristic region. *South African Journal of Botany*, **75**, 27–33.