



Research Paper

Cite this article: Quiroga MP, Castello L, Quipildor V, and Premoli AC (2019). Biogeographically significant units in conservation: a new integrative concept for conserving ecological and evolutionary processes. *Environmental Conservation* **46**: 293–301. doi: [10.1017/S0376892919000286](https://doi.org/10.1017/S0376892919000286)

Received: 26 July 2018

Revised: 6 August 2019

Accepted: 7 August 2019

First published online: 30 August 2019

Keywords:

biodiversity conservation; community genetics; comparative phylogeography; drylands; landscape conservation; Monte; Puna; Yungas

Author for correspondence:

M Paula Quiroga, Email: emepequ@gmail.com

Biogeographically significant units in conservation: a new integrative concept for conserving ecological and evolutionary processes

M Paula Quiroga¹ , Lucia Castello^{1,2}, Vilma Quipildor^{1,3} and Andrea C Premoli¹

¹Laboratorio Ecotono – INIBIOMA/CONICET, Centro Regional Universitario Bariloche – UNComahue, Quintral 1250, Centro Universitario Regional, San Carlos de Bariloche, Río Negro, CP 8400, Argentina; ²Instituto Multidisciplinario de Biología Vegetal (IMBIV), CONICET, Universidad Nacional de Córdoba, Vélez Sarsfield 1611, Córdoba 5000, Argentina and ³Laboratorio de Investigaciones Botánicas (LABIBO), CONICET, Facultad de Ciencias Naturales, Universidad Nacional de Salta, Av. Bolivia 5150, Salta 4400, Argentina

Summary

We combined tools of phylogeography, population genetics and biogeographical interpretation to analyse a group of phylogenetically independent lineages (animals and plants) that coexist within the same geographical region, yet under markedly different environments, in order to identify generalized barriers for gene flow. We tested the hypothesis that major geographic features have produced a concordant genetic structure in phylogenetically independent lineages. A rigorous bibliographic search was performed, selecting available molecular information from six taxa occupying distinct southern biomes of South America: Yungas, Prepuna, Puna and northern Monte. We estimated within-population genetic diversity, the genetic structure and haplotype phylogenies to assemble distribution maps of genetic barriers for each species. We found a strong association between genetic variation and latitudinal distribution of populations. We detected a major barrier for six taxa at 27°S latitude and a second one for a group of three species at 25–26°S. Two alternative non-exclusive hypotheses – geology and/or climate – explain concordant genetic barriers in divergent lineages. We suggest that the term ‘biogeographically significant units’ portrays a group of populations of phylogenetically unrelated taxa that inhabit the same geographic region that have been similarly impacted by major physical events, which can be used to identify priority areas in landscape conservation.

Introduction

Phylogeographical and population genetic approaches have greatly contributed to elucidating the evolutionary history of individual species or groups of closely related taxa (Hickerson et al. 2010) and defining hotspots in conservation (e.g., Rosauer et al. 2016, Souto et al. 2015). Multispecies phylogeographical analyses (Riddle et al. 2008) at the community level involve the study of biogeographical patterns that can contribute to conservation actions. Yet phylogeographical scenarios are still to be tested, mainly those related to large phylogenetic gaps across species resulting from long-term extrinsic barriers for gene flow (Avice et al. 1987). In particular, Avice et al. (1987) described the first category of phylogeographical scenarios thusly: “strong biogeographic barriers should mould the genetic structures of independently evolving species in concordant fashion.” Thus, concordant phylogeographical patterns can be used to infer the geographic, geological and climatological phenomena (Hickerson et al. 2010) that can contribute to defining areas relevant to conservation.

The field of comparative phylogeography describes the evolution of landscapes and allows for the analysis of the effects of history and geography on the community structure at both local and regional levels (Bermingham & Moritz 1998). Knowledge concerning the different ages of biotas, their areas of extent and the evolutionary forces shaping different species will enhance understanding of the processes responsible for the origin and maintenance of communities, thus contributing to biodiversity conservation efforts (Bermingham & Moritz 1998) beyond the species level. Moreover, comparative phylogeography has the potential to offer unprecedented insights into the taxa themselves (Papadopoulou & Knowles 2016). Until now, the interpretation of phylogeographical patterns in conservation has traditionally focused at the intraspecific level on identifying biogeographic phenomena under the original idea of Moritz (1994), based on the definition of evolutionarily significant units (ESUs).

In phylogeography, the concordance criterion (Avice 2009) is the opposite to that of discordance; however, both are important when co-distributed taxa are analysed, and they can complement each other by providing information on the interaction between species’ ecology and

climate change (Papadopoulou & Knowles 2016). Phylogeographical patterns were analysed in arthropods with the host pitcher plant (Satler & Carstens 2016), the symbiosis between a bat and its ectoparasitic bat fly (van Schaik et al. 2015) and biogeographical patterns of several Amazonian taxa (Gehara et al. 2017, Prates et al. 2016). In all of these cases, the studies were performed using a pair of taxa or related taxa, where the DNA region analysed or loci used have similar mutation rates. Therefore, the analysis of phylogeographical 'concerted' patterns, rather than 'individualistic' ones, can offer important insights into fundamental ecological and evolutionary principles (Papadopoulou & Knowles 2016). Thus, current genetic data among co-distributed taxa using distinct loci can be used to test for concurrent divergence patterns across multiple taxa (Huang et al. 2011). The huge public collection of DNA sequence data now available in GenBank (www.ncbi.nlm.nih.gov) provides the possibility of working with samples from a wide diversity of taxa and of scaling up to the community level, opening up new chances for comparative phylogeographical studies in less explored geographical regions that could potentially test classic biogeographical hypotheses above the species level (Riddle et al. 2008).

Widespread species usually consist of large and relatively continuous populations with high genetic diversity (Hamrick & Godt 1989). Nonetheless, a large amount of neutral genetic variation is structured in space (e.g., due to historical isolation and barriers to gene flow), which allows ESUs and management units within species sensu Moritz (1994) to be identified. In particular, ESUs have been largely used to design conservation strategies in order to preserve the evolutionary potential of individual species, protecting reciprocally monophyletic groups of populations by means of DNA sequences and showing significant divergence at nuclear genes (Moritz 1994). Moreover, concordant/discordant patterns emerging from the analysis of distinct molecular markers and different species may indicate shared major evolutionary forces and current ecological processes shaping their gene pools that can contribute to the conservation of biodiversity (Manel et al. 2012).

As phylogeography and biogeography can answer the same questions by approaching them through different methodologies, here we suggest using these two disciplines to extend Moritz's (1994) ESU concept to a more inclusive hierarchical level, scaling up ESUs to the biota. We propose to use the evidence of concordant barriers to gene flow of independent lineages (obtained from multivariate analysis based on bi-parental markers or divergences in haplotype phylogenetic trees) as evidence of processes that occur at the regional level that involve communities to delimit biogeographically significant units (BGSUs). We follow the hypothesis of Endler (1982) that all of the species within an area were subjected to the same series of vicariant events. The underlying argument for protecting these areas is based on the phylogeographical principle that persistent barriers to gene flow can result in significant genetic discontinuities (Avice 2004). Therefore, the conservation implications of this concept are broader than those of ESUs, and they can contribute to identifying geographic areas with common evolutionary histories defined by multiple genetic lineages.

We developed the BGSU concept using the complex landscape of north-western Argentina (NWA), which is characterized by abrupt climate changes along numerous valleys and a complex mountain system that varies along latitude and longitude (Supplementary Fig. S1(a), S1(b), available online). The Cordillera de los Andes decreases in altitude from west to east, ending in the dry lowland Chaco. Along this elevation gradient, the climate changes from arid high-elevation Puna to cool rainforest in the

Yungas highlands and to humid subtropical forest in Pedemont lowlands. The Yungas mountain slopes have an irregular surface, generating a discontinuous distribution of different habitats, thus having consequences for biodiversity and distributions of endemisms (Brown et al. 2002). In northern Argentina, Bolivia and Chile, the Andes are extremely arid on the west face between 15°S and 27°S latitude. Parallel mountain ranges block moisture-bearing winds that originate in the Amazon basin and the Atlantic, leading to humid eastern flanks and aridity within the Puna–Altiplano Plateau in the west (Strecker et al. 2007). Arid climates of the western Andes are recorded from the late Triassic (Clarke 2006). Thus, aridity-inducing factors during the Miocene uplift intensified the Andean rain shadow, which already existed 15 Ma ago (Hartley 2003). Arid conditions have prevailed in this area throughout geologic time. Nonetheless, intense climate oscillations, such as the northward displacement in weather patterns during the Pleistocene and increased westerly circulation at 28°S (Clarke 2006), probably had local effects on the biota. In addition, at the same latitude further east, a subtropical rainforest exists, stratified into at least three altitudinal levels as Yungas, Montane forest and Pedemont (Brown 1990).

Material and methods

In order to identify BGSUs, we use previously published data to compare the genetic structures of phylogenetically independent lineages that coexist in the NWA region. A rigorous bibliographic search was performed looking for articles containing molecular information from taxa occurring in the region of interest using the Google Scholar and Scopus platforms. From an extensive list, we selected published population genetic articles from six species from Yungas, High Monte, Puna and Prepuna desert. The criteria used for the selection of appropriate species were the following: selected species were present at between 20°S and 30°S latitudes; selected species showed molecular evidence of a differentiation north and south of the barrier; and selected species were phylogenetically independent lineages. The selected species were four plants – *Echinopsis terscheckii* (Cactaceae), *Munroa argentina* (Poaceae), *Podocarpus parlatorei* (Podocarpaceae) and *Tillandsia capillaris* (Bromeliaceae) – and two animals – *Hypsiboas andinus* (Hylidae) and *Thylamys pallidior* (Didelphidae). These are hereafter named by genus. All of these species occur between latitudes 17°S and 31°S in different biomes, and localities from each species occurring in these latitudes were selected (Table 1, Supplementary Fig. S1). Published genetic data sources included isozymes and DNA sequences of the chloroplasts (cpDNA), mitochondria (mtDNA) and nucleus (nDNA). The sequences were used to identify haplogroups. This information was combined with levels of genetic diversity to provide geographically controlled information that may guide conservation and management actions. Geographic distributions of intraspecific polymorphisms in these markers were used to identify concordant patterns among distinct species. Latitude and longitude were obtained from the original articles for each species of studied populations, except for *Hypsiboas*, where the geographical location was subsequently georeferenced using Google Earth v. 7.3.2.5491.

For all species and outgroups, haplotype sequences were downloaded from GenBank (Supplementary Table S1). Sequences were aligned manually using Bioedit v. 7.1.3.0 (Hall 1999); gaps were coded as binary characters using simple indel coding (Simmons & Ochoterena 2000). Concatenated aligned sequences were: *Echinopsis*: trnH-psbA, trnM-trnD, trnS-trnG and

Table 1. Population sample sizes, total number of individuals (in parenthesis) and markers used for each species, with references to each species. The population sample data for each species are in Supplementary Fig. S1.

Species	Isozymes	mtDNA	cpDNA	gDNA	Reference
<i>Echinopsis terscheckii</i>	24 (740)	–	22 (44)	22 (44)	Quipildor et al. (2018)
<i>Hypsiboas andinus</i>	–	24 (259)	–	–	Koscinski et al. (2008)
<i>Munroa argentina</i>	–	–	20 (158)	–	Amarilla et al. (2015)
<i>Podocarpus parlatorei</i>	18 (456)	–	24 (215)	–	Quiroga and Premoli (2013)
<i>Thylamys pallidior</i>	–	14 (14)	–	–	Giarla et al. (2014)
<i>Tillandsia capillaris</i>	–	–	9 (20)	–	Castello et al. (2016)

ITS1–2 – 1938 bp; *Hypsiboas*: cytB – 340 bp; *Munroa*: rps16–trnK and ndhA – 1968 bp; *Podocarpus*: trnL–trnF – 330bp; *Tillandsia*: ycf1 – 4417 bp; and *Thylamys*: cytB – 1149 bp. We included as outgroups related species (*Hypsiboas riojanus*, *Munroa andina*, *Podocarpus salignus* and *Tillandsia virescens*) and a geographically distant individual from the northern distribution for *Thylamys*. For *Echinopsis*, the absence of data did not allow outgroups to be included. We included isozyme data to calculate cluster genetic distances for *Podocarpus* (Quiroga & Premoli 2007) and *Echinopsis* (Quipildor et al. 2017).

Genetic diversity

We calculated geographic variation of within-population genetic parameters for those species consisting of more than one individual per population. Thus, we estimated haplotype diversity (H) for sequence data for *Munroa* (DNA regions rps16–trnK and ndhA) and *Hypsiboas* (DNA regions rps16–trnK, ndhA and cytB). In addition, we calculated expected heterozygosity (He) for *Podocarpus* and *Echinopsis* using information on isozymes. These parameters were calculated using Arlequin v. 3.5 (Excoffier & Lischer 2010) and GenAlEx v. 6.5 (Peakall & Smouse 2006) for sequence and isozyme data, respectively. We performed regression analyses of H (for DNA sequence data) and He (for isozymes) with latitude using STATISTICA 7.0. We excluded *Tillandsia* and *Thylamys* from these analyses because the available data consisted only of one individual per population and genetic diversity parameters are population based.

Genetic structure

In order to deduce the geographic structure of genetic variants (haplotypes/allelic frequencies), we used DNA sequences of *Echinopsis*, *Hypsiboas*, *Munroa*, *Tillandsia* and *Thylamys* and isozyme information of *Podocarpus* and *Echinopsis*. These analyses were performed using Geneland in R prompt (Guillot et al. 2012). We analysed all of the species following the same setting: 100 000 iterations with 100 thinnings, with the number of populations varying from 1 to 5. This analysis identified a minimum number of clusters (K) that maximized the divergence between groups. Analysis of molecular variance (AMOVA) and estimates of divergence (F_{ST}) among genetic groups were performed in Arlequin v. 3.5 and GenAlEx v. 6.5 for sequence and isozyme data, respectively.

Phylogenetic analyses

Intraspecific phylogenies of each species using haplotypes for DNA sequences were used to identify the geographic associations of distinct lineages. The evolutionary substitution model using the Akaike information criterion (AIC) and the AICc correction as

implemented in jModelTest v. 2.1.5 (Darriba et al. 2012) were performed for each set of markers and species. Phylogenetic trees for each species were constructed using a Yule tree prior in BEAST v. 1.7.2 (Drummond & Rambaut 2007). Runs were performed for 100 million generations (sampling every 10 000 generations and a tree annotator burn-in of 10 000 trees); subsequent trees were used to estimate Bayesian posterior probabilities in a consensus tree. Convergence of estimated parameters was verified using Tracer v. 1.6.1 (Rambaut & Drummond 2009). Multivariate cluster analysis by the unweighted pair group method with arithmetic mean (UPGMA) using isozyme data was performed for *Podocarpus* and *Echinopsis* based on the modified Rogers' genetic distance (Wright 1978).

Monophyletic clades found by phylogenetic trees and/or UPGMA clusters of each species depicting latitudinal disjunction and the geographical location of studied populations were assembled on a map using QGIS 2.10 Pisa (QGIS Development Team 2012). We used information from the haplotype phylograms and Geneland results to assign each population to a region (north, centre and south to $K = 3$; or north and south to $K = 2$). We identified different groups within a given geographic area that are flanked by a barrier to gene flow. The superposition of the group delimited for each species based on the grouping of haplotypes and/or allele frequencies was used to evaluate the concordance among species and to identify the barriers producing population disjunctions in NWA.

Results

Genetic diversity

Parameters of genetic diversity (H for *Hypsiboas* and *Munroa* from DNA information and He for *Podocarpus* and *Echinopsis* from isozyme information) increased in a concordant fashion towards the south in *Hypsiboas* ($\beta = 0.079$; $R^2 = 0.19$; $p < 0.0368$), *Echinopsis* ($\beta = 0.025$; $R^2 = 0.45$; $p < 0.0003$) and *Podocarpus* ($\beta = 0.49$; $R^2 = 0.55$; $p < 0.0001$). However, *Munroa* presented the opposite pattern ($\beta = -0.062$; $R^2 = 0.222$; $p < 0.0357$), with higher levels of genetic diversity towards the north of the distribution (Supplementary Fig. S2(a–d)).

Genetic structure

The geographic structure of multiple populations' and species' genetic data inferred using Geneland mainly yielded two patterns. The genetic structure of *Munroa*, *Hypsiboas* and *Thylamys* consisted of $K = 3$ groups produced mainly by the presence of two barriers located at 25–26°S and 27–28°S. Groups were designated as north, central and south, and populations at the central location were derived either from the northern or southern group (Fig. 1(a–c)). Populations of *Echinopsis*, *Tillandsia* and

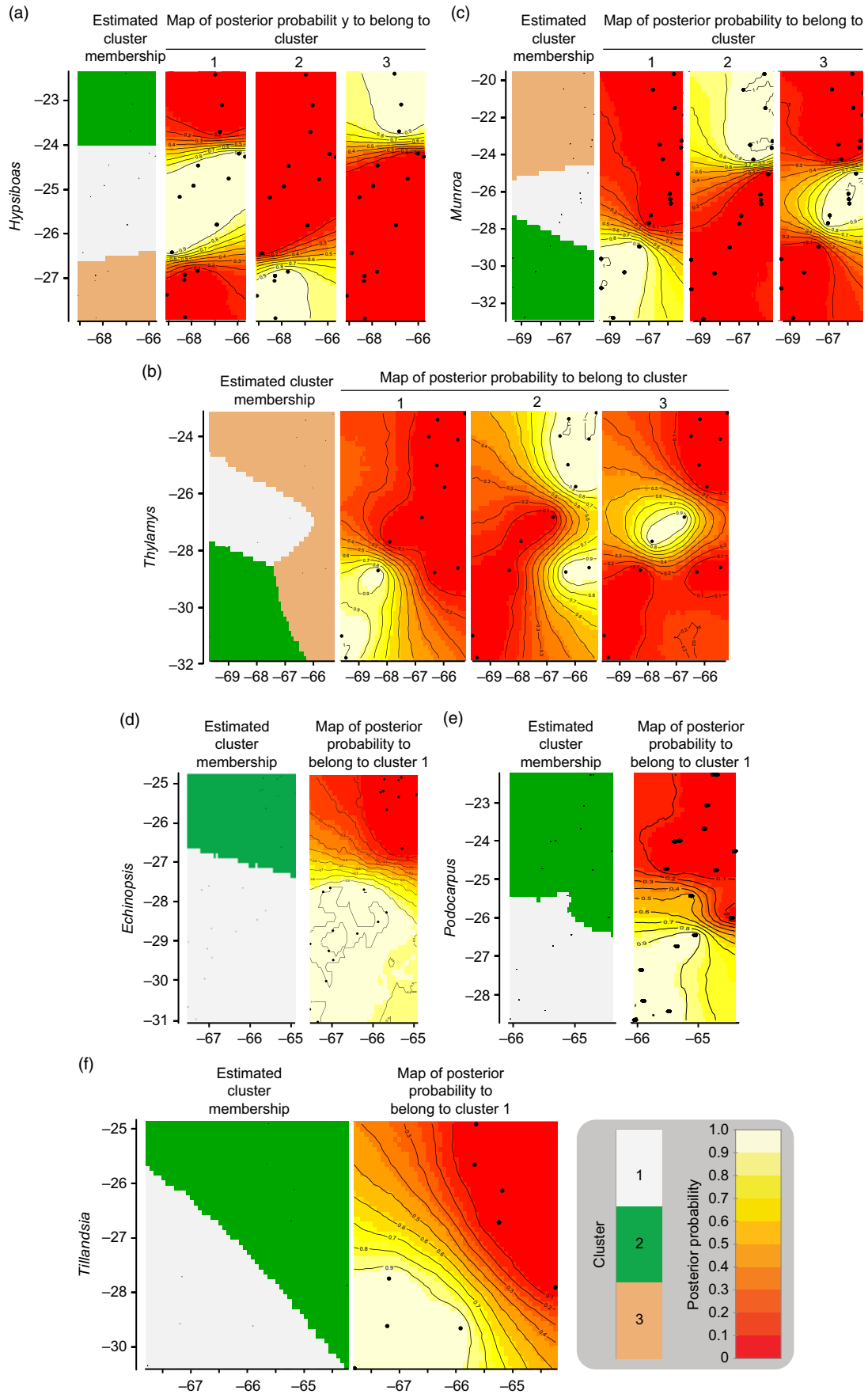


Fig. 1. Genetic structure by longitude (x-axis) and latitude (y-axis) yielded by Geneland analysis for each species. (a) *Hypsiboas*; (b) *Thylamys*; (c) *Munroa*; (d) *Echinopsis*; (e) *Tillandsia*; and (f) *Podocarpus*.

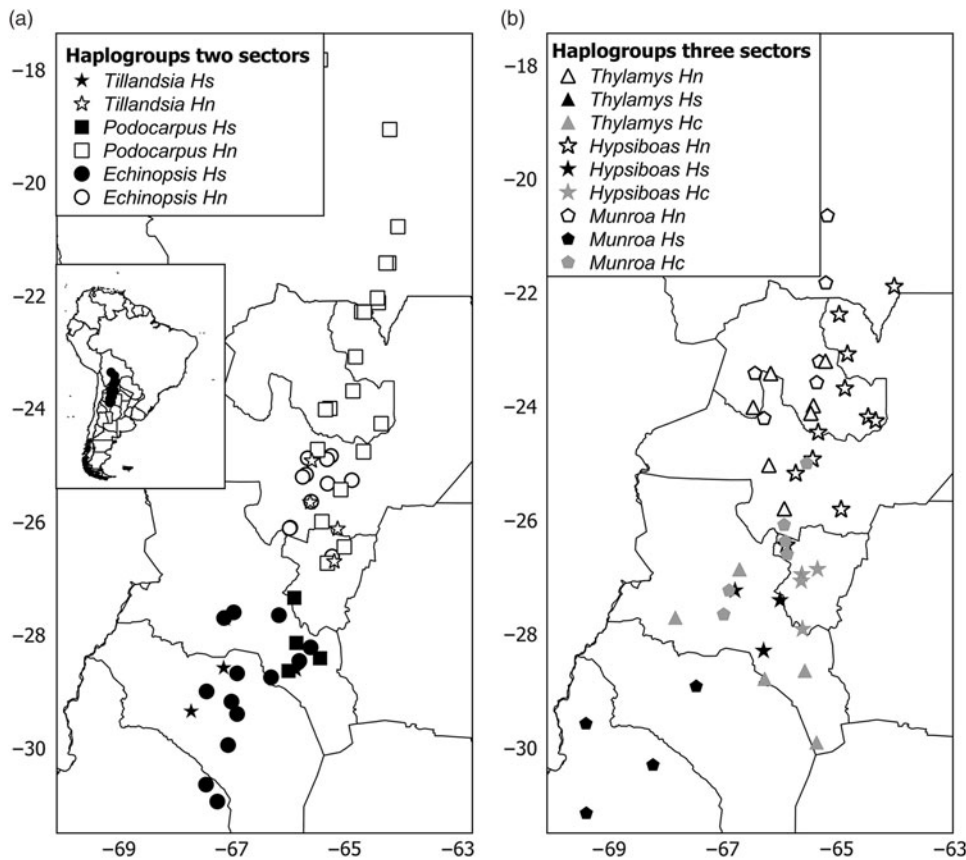


Fig. 2. Distribution maps of haplogroups in (a) two and (b) three sectors. *Hs*, *Hc* and *Hn* correspond to south, central and north haplogroups. Each species is represented by a different symbol. Different shades depict haplogroups within each region: black = south; grey = central; white = north.

Podocarpus were clustered in $K = 2$ groups, designated as north and south, which were separated by a barrier located at 27°S (Fig. 1(d–f)). In the case of *Echinopsis*, one different haplotype characterized populations on each side of this barrier, and this genetic structure was concordant for nuclear internal transcribed spacer and chloroplast DNA sequences. In *Podocarpus*, two isozyme alleles and one chloroplast DNA haplotype were detected exclusively in southern populations (at 27°S). For *Tillandsia*, three haplotypes characterized northern populations and two haplotypes characterized southern populations. The AMOVA tests for each species and divergence among geographic groups (F_{ST}) were all statistically significant (Supplementary Table S2).

Phylogenetic analyses of haplotypes

The phylogeny of haplotypes was congruent with geography and yielded latitudinally structured clades. Haplotypes of *Tillandsia* and *Echinopsis* were segregated into two clades delimiting the north and south regions (Supplementary Fig. S3(a), S3(c)). The same pattern was supported by the cluster analysis using genetic distances based on isozymes for *Echinopsis* (data from Quijildor et al. 2017). For other species, the genetic structure consisted of three regions (named north, centre and south): *Thylamys* and *Hypsiboas* showed a centre region more related to the north group (Supplementary Fig. S3(d), S3(f)), while populations of *Munroa* of the centre region were more similar to the south region (Supplementary Fig. S3(b)). Although the phylogram based on chloroplast DNA haplotypes of *Podocarpus* showed no geographic differentiation between regions (data from Quiroga et al. 2012), a significant north–south genetic structure was yielded by the cluster analysis based on genetic distances using isozymes (Supplementary Fig. S3(e)) and Geneland

analysis (Fig. 1(e)). The combination of the grouping of haplotypes into two or three genetic regions and the population coordinates for all species resulted in different distribution maps of genetic variants. For taxa producing two clades, such as *Echinopsis*, *Tillandsia* and *Podocarpus*, the north variants were located north of 25–26°S and the south ones were south of 27–28°S (Fig. 2(a)), while for those species producing three groups, the centre region was located at 25–28°S for *Munroa*, *Hypsiboas* and *Thylamys* (Fig. 2(b)). All analysed species shared a major discontinuity at 27–28°S latitude.

Discussion

The geography, ecological and evolutionary processes acting within the study area have moulded the gene pool of the co-distributed species in a concordant fashion. Such events affected studied species independently of their phylogenetic and life history characteristics. We propose that the identification of concordant barriers to gene flow in several independent lineages provides evidence of common major landscape-level processes acting on communities (Fig. 3). These impediments are conventionally recognized as being reflected in concentrations of distributional limits for many species (Avise et al. 1987). Accordingly, we suggest that groups of populations of unrelated and phylogenetically independent taxa share a given area within a biome delimiting BGSUs.

Although our analysis was based on a small number of phylogenetically independent species with contrasting life histories and reproductive strategies, the genetic data were similarly structured (Figs 1, 2; Supplementary Fig. S2). On the one hand, we analysed two animals with wide distributions: a frog that is dependent on humidity for reproduction and grows in deeply incised river valleys

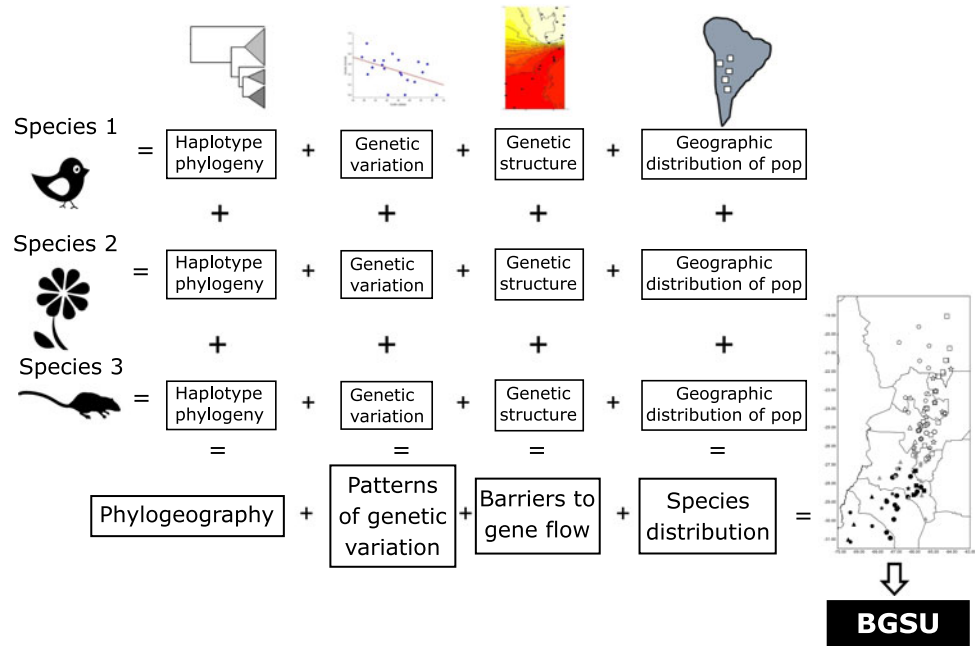


Fig. 3. Diagram representing the information systematically processed from several lineages to construct the biogeographically significant units (BGSUs).

that penetrate the Andes, spanning from humid Montane forests to Montane grasslands (Koscinski et al. 2008); and a marsupial with a broad distribution in Andean Montane habitat (elevations <3900 m) (Braun et al. 2005, Giarla et al. 2014). The four plant species have wide distributions, yet are ecologically different: a cold-tolerant, high-elevation conifer (Quiroga & Premoli 2007); a specialized cactus that inhabits ecotonal areas between seasonally dry forests, Monte and Puna that withstands water deficit and is dispersed by ants and birds (Quipildor et al. 2017); an epiphyte bromeliad with high seed dispersal by wind that grows in various environments, including vertical granite walls at high elevation, semi-arid forests in valleys and humid mountain forests on various hosts (Castello et al. 2016); and an annual grass that inhabits open plains and mountains from mid-elevations (1000 m) to high elevations (4200 m) on alluvial and sandy-stony soils along seasonally dry creeks and rivers and grows only in riverbeds in areas with very low precipitation (Amarilla et al. 2015). Thus, the species used in this combined analysis do not share ecological tolerances, phylogenetic evolutionary histories or unique biomes (Supplementary Fig. S1). The genetic discontinuity in NWA at 26–27°S had a central zone that was either recently colonized from one of the two sectors or could be a secondary contact area between two divergent gene lines for three of the six studied species. Nevertheless, this disjunction was estimated for different periods of time. The divergence times among haplotypes using indirect methods with fossil calibration and molecular clocks were estimated to be 2.2–3.4 Ma in *Munroa* (Amarilla et al. 2015), 1.0–2.0 Ma in *Hypsiboas* (Koscinski et al. 2008) and 1.4–2.4 Ma in *Thylamys* (Giarla et al. 2014). Differences in divergence times may be due to species-specific factors that had impacted on each species' gene pool, including abiotic events such as climate and tectonism or biotic processes; for example, reproduction and survival strategies that determine barriers to gene flow and may vary over time. Mountain uplift is likely to influence climate, creating rain shadows that may have a synergistic effect on species' distributions (e.g., Quipildor et al. 2018). In addition, tectonic forces may affect sea-level changes that could impact lineage divergence (e.g., Acosta et al. 2014). One or a combination of such forces could mould

population size and gene flow, resulting in spatially congruent lineage divergence, which seems to be asynchronous for distinct taxa; a similar pattern was shown using multispecies analyses for Mesoamerican taxa by Ornelas et al. (2013).

Biogeographical history

Other concordant barriers to gene flow or species distributions have been identified in South America in Amazonia (Aleixo 2004, Antonelli et al. 2010), Huancabamba in Peru (Vargas et al. 2017), Patagonia in Argentina and Chile (Premoli et al. 2011, Sersic et al. 2011) and Mata Atlantica in Brazil (Turchetto-Zolet et al. 2016). Although based on limited information, the present study identifies the first barrier for NWA. Emerging concordant phylogeographical patterns may indicate shared evolutionary histories (Manel et al. 2012). Such evidence is growing in association with new mathematical developments (e.g., hierarchical approximate Bayesian computation), the capacity to process multi-locus datasets (Huang et al., 2011) and neutral and also adaptive loci that enable Avise et al.'s (1987) assumptions to be corroborated. Considering the permanent development of new molecular data tools and their subsequent analysis, the evidence of concordant phylogeographical patterns should be consistent and robust. Avise (2009) also postulated the concept of multilocus concordance. Therefore, the geographic/molecular evidence to be considered in a BGSU analysis must be consistent, strong and independent of the molecular marker (regardless of whether it is neutral or adaptive), lineage and geographic location. Nevertheless, because divergent evolutionary processes may occur in distinct areas within a given region such that the different units may not be under the same selection forces, adaptive variation may yield geographic patterns that are discordant with neutral markers, which deserve consideration.

Biogeography, phylogeography and current ecological processes can contribute to the conservation of biodiversity. BGSUs thus constitute delimited areas for the biota that share ecological and evolutionary events (Fig. 3). A barrier resulting from the synergistic effects of orography and climate may operate on the genetic structure of different species building up concordant

phylogeographical patterns. The presence of the Sierra de Aconquija located at $\leq 27^{\circ}\text{S}$ in NWA may in part be responsible for the differences between northern and southern groups of populations of distinct species (Quipildor et al. 2018). The Sierra de Aconquija constitutes an effective orographic barrier to the moisture flux coming from the Atlantic Ocean: the eastern flank receives much more precipitation ($>2\text{ m year}^{-1}$) than the western slope (Sobel & Strecker 2003). The continual south central Andes uplift ($24\text{--}27^{\circ}\text{S}$ and $64\text{--}69^{\circ}\text{W}$) between 3.4 and 2.4 Ma ago generated great aridity on western slopes, which highlights the role of tectonics in the evolution of climate in this part of the Andes (Coutand et al. 2006). Genetic patterns observed in different lineages may be due to geological events, which could be reinforced by climatic effects.

Numerous studies highlighted the importance of the contribution of population genetics, phylogeography and the spatially explicit identification of areas where evolutionary processes occur to the design of conservation actions (Carvalho et al. 2011, Hanson et al. 2017, Richardson 2012). In addition, conservation planning at the regional level has been recently recognized as a priority (Baldwin et al. 2018), and tools are needed to help implement landscape conservation. Other tools that can be added to improve BGSU analysis are niche models, as suggested by Smith et al. (2019), incorporating population-level differentiation (e.g., by means of molecular variants that may provide information on ecotypes and local adaptations). Considering species as single, undifferentiated entities may lead to incorrect range predictions and therefore misplaced conservation efforts (Hällfors et al. 2016). A constraint is that we often do not know the degree to which populations are geographically structured. The approach proposed here for the delimitation of BGSUs seeks to achieve this knowledge. While the use of ESUs in conservation is relevant in terms of the evolutionary potential of a given species, BGSUs provide a multi-species perspective that may be more in accordance with the community-level responses needed under rapid climate change. Whereas one of the main objectives in conservation is to develop plans for emblematic species or lineages with unique genetic architectures, we hereby suggest that we should also focus on protecting priority areas delimited by natural, persistent barriers that operate through time and impact entire biotas.

Environmental conservation actions for NWA

We demonstrated a concordant genetic pattern for the NWA region, where a zone of elevated endemism was reported. A large number of endemic plant species was detected for the transition zone between the High Monte and the Southern Andean Yungas between $26\text{--}27^{\circ}\text{S}$ and $\leq 28^{\circ}\text{S}$ (fig. 2 in Godoy-Bürki et al. 2014). Rodent species show a concentration of Montane endemics at 2500 m altitude in the southern Yungas from 26°S to $27^{\circ}30'\text{S}$ (Ferro 2013). A dataset of 805 species of plants and animals identified a centre of endemism between latitudes $25^{\circ}50'\text{S}$ and 28°S (Szumik et al. 2012). Endemic species are indicators of biodiversity, and help to define priority conservation areas biogeographically (Morrone 1994). However, the evolutionary and ecological processes responsible for producing centres of endemism are complex and reflect interacting aspects of climatic, geological and biogeographical history (Harrison & Noss 2017) that can differentially impact each species' gene pool in an individualistic fashion. For the species studied here, genetic diversity may result in discordant latitudinal patterns (e.g., *Munroa* decreasing while *Echinopsis*, *Hypsiboas* and *Podocarpus* are increasing towards the south;

Supplementary Fig. S2), while also showing the same generalized barriers to gene flow.

The evidence presented here and elsewhere (e.g., Brown et al. 2002, Halloy et al. 1994) suggests that the Upper Bermejo River Basin and the Aconquija range are important areas for conservation because of their diversity, endemism and probable long-term stability. Important conservation efforts in the Yungas have resulted in the creation of 15 protected areas under national or provincial management. Nevertheless, the area located between the southern Yungas and the arid Monte and Chaco in Catamarca Province is not included in any protected area. Thus, concrete actions should be promoted in order to conserve this contact zone of two different phytoregions with high genetic diversity and many endemic species.

Based on the present genetic evidence and that on endemisms (Ferro 2013, Godoy-Bürki et al. 2014, Szumik et al. 2012), we suggest that the area from 26°S to 27°S should be urgently included in conservation and management plans for flora and fauna in NWA. In particular, *c.* 27°S is the southern geographical limit for subtropical species of the Yungas, such as *Podocarpus parlatorei*. This is the only conifer that characterizes Montane forests, hosting a significant number of epiphytic species (Brown 1990) and generating microclimates, which make it a keystone species for multiple lineages. New models of climatic change predict that the southern region of Yungas and the boundary area between drylands (Monte and Puna) and Yungas will suffer changes not only in terms of temperature, but also in terms of precipitation, which will affect the distribution of plant species such as *P. parlatorei* (Quiroga et al. 2018) and others (Godoy-Bürki 2016). An important centre of endemism or genetically valuable populations could be lost (Quiroga et al. 2018) in the near future or, in the best of cases, it might shift (e.g. Godoy-Bürki 2016).

Conclusion

We propose that molecular evidence from phylogenetically independent taxa helps to delimit BGSUs that might be used to develop conservation actions within a biogeographic area. Our analysis, although based on few taxa yet using a wide diversity of lineages with broad distributions, may guide future studies to seek concordant genetic patterns that can contribute to the conservation at the community at the regional level. Concordant information from phylogenetically independent taxa could contribute to the identification of barriers to gene flow in any region of the world. This will allow areas to be identified where evolutionary processes operate independently and where potential sources of the evolutionary novelties of each lineage should be protected.

Supplementary material. To view supplementary material for this article, please visit <https://doi.org/10.1017/S0376892919000286>.

Acknowledgements. We thank LD Amarilla, TC Giarla and D Koscinski for their collaboration by sending us additional information or explanations in addition to the data published in the original works. We thank E Zattara for figure assistance. All authors are members of CONICET (Consejo Nacional del Investigaciones Científicas y Técnicas), Argentina.

Financial support. Financial support was provided by project FONCyT PICT 2015-1563.

Conflict of interest. None.

Ethical standards. None.

References

- Acosta MC, Mathiasen P, Premoli AC (2014) Retracing the evolutionary history of *Nothofagus* in its geoclimatic context: new developments in the emerging field of phylogeology. *Geobiology* 12: 497–510.
- Aleixo A (2004). Historical diversification of a terra-firme forest bird superspecies: a phylogeographic perspective on the role of different hypotheses of Amazonian diversification. *Evolution* 58: 1303–1317.
- Amarilla LD, Chiapella JO, Sosa V, Moreno NC, Anton AM (2015) A tale of North and South America: time and mode of dispersal of the amphitropical genus *Munroa* (Poaceae, Chloridoideae). *Botanical Journal of the Linnean Society* 179: 110–125.
- Antonelli A, Quijada-Mascareñas A, Crawford AJ, Bates JM, Velasco PM, Wüster W (2010) Molecular studies and phylogeography of Amazonian tetrapods and their relation to geological and climatic models. In: *Amazonia, Landscape and Species Evolution: A Look into the Past*, eds C Hoorn, F Wesselingh, pp. 386–404. Hoboken, NJ, USA: John Wiley & Sons.
- Avisé JC (2004) *Molecular Markers, Natural History, and Evolution*. Sunderland, MA, USA: Sinauer Associates, Inc.
- Avisé JC (2009) Phylogeography: retrospect and prospect. *Journal of Biogeography* 36: 3–15.
- Avisé JC, Arnold J, Ball RM Jr, Bermingham E, Lamb T, Neigel JE, Reeb CA, Saunders NC (1987) Intraspecific phylogeography: the mitochondrial DNA bridge between population genetics and systematics. *Annual Review of Ecology and Systematics* 18: 489–522.
- Baldwin RF, Trombulak SC, Leonard PB, Noss RF, Hilty JA, Possingham HP, Sacarello L, Anderson MG (2018) The future of landscape conservation. *BioScience* 68: 60–63.
- Bermingham E, Moritz C (1998) Comparative phylogeography: concepts and applications. *Molecular Ecology* 7: 367–369.
- Braun JK, Van Den Bussche RA, Morton PK, Mares MA (2005) Phylogenetic and biogeographic relationships of mouse opossums *Thylamys* (Didelphimorphia, Didelphidae) in southern South America. *Journal of Mammalogy*, 86: 147–159.
- Brown AD (1990) El epifitismo en las selvas montañas del Parque Nacional ‘El Rey’, Argentina: composición florística y patrón de distribución. *Revista de Biología Tropical* 38: 155–166.
- Brown AD, Grau A, Lomáscolo T, Gasparri NI (2002) Una estrategia de conservación para las selvas subtropicales de montaña (Yungas) de Argentina. *Ecotrópicos* 15: 147–159.
- Carvalho SB, Brito JC, Crespo EJ, Possingham HP (2011) Incorporating evolutionary processes into conservation planning using species distribution data: a case study with the western Mediterranean herpetofauna. *Diversity and Distributions* 17: 408–421.
- Castello LV, Barfuss MH, Till W, Galetto L, Chiapella JO (2016) Disentangling the *Tillandsia capillaris* complex: phylogenetic relationships and taxon boundaries in Andean populations. *Botanical Journal of the Linnean Society* 181: 391–414.
- Clarke JD (2006) Antiquity of aridity in the Chilean Atacama Desert. *Geomorphology* 73: 101–114.
- Coutand I, Carrapa B, Deeken A, Schmitt AK, Sobel ER, Strecker MR (2006) Orogenic plateau formation and lateral growth of compressional basins and ranges: insights from sandstone petrography and detrital apatite fission-track thermochronology in the Angastaco Basin, NW Argentina. *Basin Research* 18: 1–26.
- Darriba D, Taboada GL, Doallo R, Posada D (2012) jModelTest 2: more models, new heuristics and parallel computing. *Nature Methods* 9: 772.
- Drummond AJ, Rambaut A (2007) BEAST: Bayesian evolutionary analysis by sampling trees. *BMC Evolutionary Biology* 7: 21.4
- Endler JA (1982) Problems in distinguishing historical from ecological factors in biogeography. *American Zoologist* 22: 441–452.
- Excoffier L, Lischer HEL (2010) Arlequin suite ver 3.5: A new series of programs to perform population genetics analyses under Linux and Windows. *Molecular Ecology Resources* 10: 564–567.
- Ferro I (2013) Rodent endemism, turnover and biogeographical transitions on elevation gradients in the northwestern Argentinian Andes. *Mammalian Biology* 78: 322–331.
- Gehara M, Garda AA, Werneck FP et al. (2017) Estimating synchronous demographic changes across populations using hABC and its application for a herpetological community from northeastern Brazil. *Molecular Ecology* 26: 4756–4771.
- Giarella TC, Voss RS, Jansa SA (2014) Hidden diversity in the Andes: comparison of species delimitation methods in montane marsupials. *Molecular Phylogenetics and Evolution* 70: 137–151.
- Godoy-Bürki AC (2016) Efectos del cambio climático sobre especies de plantas vasculares del sur de los Andes Centrales: un estudio en el noroeste de Argentina (NOA). *Ecología Austral* 26: 83–94.
- Godoy-Bürki AC, Ortega-Baés P, Sajama JM, Aagesen L (2014) Conservation priorities in the Southern Central Andes: mismatch between endemism and diversity hotspots in the regional flora. *Biodiversity and Conservation* 23: 81–107.
- Guillot G, Renaud S, Ledevin R, Michaux J, Claude J (2012) A unifying model for the analysis of phenotypic, genetic and geographic data. *Systematic Biology* 61: 897–911.
- Hall TA (1999) BioEdit: a user-friendly biological sequence alignment editor and analysis program for Windows 95/98/NT. *Nucleic Acids Symposium Series* 41: 95–98.
- Hällfors MH, Liao J, Dzuris J, et al. (2016). Addressing potential local adaptation in species distribution models: implications for conservation under climate change. *Ecological Applications* 26: 1154–1169.
- Halloy S, Gonzalez JA, Grau A (1994) Proyecto de creación del Parque Nacional Aconquija (Tucumán – Argentina). *Serie Conservación de la Naturaleza* 9: 55.
- Hamrick JL, Godt MJW (1989) Allozyme diversity in plant species. In: *Plant Population Genetics, Breeding and Germplasm Resources*, eds AHD Brown, MT Clegg, AL Kahler, BS Weir, pp. 44–64. Sunderland, MA, USA: Sinauer Associates, Inc.
- Hanson JO, Rhodes JR, Riginos C, Fuller RA (2017) Environmental and geographic variables are effective surrogates for genetic variation in conservation planning. *Proceedings of the National Academy of Sciences of the United States of America* 114: 12755–12760.
- Harrison S, Noss R (2017) Endemism hotspots are linked to stable climatic refugia. *Annals of Botany* 119: 207–214.
- Hartley A (2003). Andean uplift and climate change. *Journal of the Geological Society* 160: 7–10.
- Hickerson MJ, Carstens BC, Cavender-Bares J (2010) Phylogeography’s past, present, and future: 10 years after Avisé, 2000. *Molecular Phylogenetics and Evolution* 54: 291–301.
- Huang W, Takebayashi N, Qi Y, Hickerson MJ (2011) MTML-msBayes: approximate Bayesian comparative phylogeographic inference from multiple taxa and multiple loci with rate heterogeneity. *BMC Bioinformatics* 12: 1.
- Koscinski D, Handford P, Tubaro PL, Sharp S, Lougheed SC (2008) Pleistocene climatic cycling and diversification of the Andean treefrog, *Hypsiboas andinus*. *Molecular Ecology* 17: 2012–2025.
- Manel S, Gugerli F, Thuiller W, Alvarez N, Legendre P, Holderegger R, Gielly L, Taberlet P (2012) Broad-scale adaptive genetic variation in alpine plants is driven by temperature and precipitation. *Molecular Ecology* 21: 3729–3738.
- Moritz C (1994) Applications of mitochondrial DNA analysis in conservation: a critical review. *Molecular Ecology* 3: 401–411.
- Morrone JJ (1994) On the identification of areas of endemism. *Systematic Biology* 43: 438–441.
- Ornelas JF, Sosa V, Soltis DE et al. (2013) Comparative phylogeographic analyses illustrate the complex evolutionary history of threatened cloud forests of northern Mesoamerica. *PLoS ONE* 8: e56283.
- Papadopoulou A, Knowles LL (2016) Toward a paradigm shift in comparative phylogeography driven by trait-based hypotheses. *Proceedings of the National Academy of Sciences of the United States of America* 113: 8018–8024.
- Peakall R, Smouse PE (2006) GENALEX 6: genetic analysis in Excel. Population genetic software for teaching and research. *Molecular Ecology Notes* 6: 288–295.
- Prates I, Rivera D, Rodrigues MT, Carnaval AC (2016). A mid-Pleistocene rain-forest corridor enabled synchronous invasions of the Atlantic Forest by Amazonian anole lizards. *Molecular Ecology* 25: 5174–5186.



- Premoli AC, Mathiasen P, Acosta MC, Ramos VA (2011) Phylogeographically concordant chloroplast DNA divergence in sympatric *Nothofagus* s.s. How deep can it be? *New Phytologist* 193: 261–275.
- QGIS Development Team (2012) QGIS Geographic Information System. Open Source Geospatial Foundation Project [www document]. URL <http://qgis.osgeo.org>.
- Quipildor VB, Mathiasen P, Premoli AC (2017) Population genetic structure of the giant cactus *Echinopsis terscheckii* in northwestern Argentina is shaped by patterns of vegetation cover. *Journal of Heredity* 108: 469–478.
- Quipildor VB, Kitzberger T, Ortega-Baes P, Quiroga MP, Premoli AC (2018) Regional climate oscillations and local topography shape genetic polymorphisms and distribution of the giant columnar cactus *Echinopsis terscheckii* in drylands of the tropical Andes. *Journal of Biogeography* 45: 116–126.
- Quiroga MP, Premoli A (2007) Genetic patterns in *Podocarpus parlatorei* reveal long term persistence of cold tolerant elements in southern Yungas. *Journal of Biogeography* 34: 447–455.
- Quiroga MP, Premoli AC (2013) El rol de las poblaciones marginales en la conservación del acervo genético de la única conífera del sur de Yungas *Podocarpus parlatorei*. *Ecología en Bolivia* 48: 4–16.
- Quiroga MP, Pacheco S, Malizia LR, Premoli AC (2012) Shrinking forests under warming: evidence of *Podocarpus parlatorei* (pino del cerro) from the Subtropical Andes. *Journal of Heredity* 103: 682–691.
- Quiroga MP, Premoli AC, Kitzberger T (2018) Niche squeeze induced by climate change of the cold-tolerant subtropical montane *Podocarpus parlatorei*. *Royal Society Open Science* 5: 180513.
- Rambaut A, Drummond AJ (2009) Tracer v. 1.5.0 [www document]. URL <http://beast.bio.ed.ac.uk/Tracer>
- Richardson DM (2012) Conservation biogeography: what's hot and what's not? *Diversity and Distribution* 18: 319–322.
- Riddle BR, Dawson MN, Hadly EA, Hafner DJ, Hickerson MJ, Mantooth SJ, Yoder AD (2008) The role of molecular genetics in sculpting the future of integrative biogeography. *Progress in Physical Geography* 32: 173–202.
- Rosauer DF, Blom MPK, Bourke G *et al.* (2016) Phylogeography, hotspots and conservation priorities: an example from the Top End of Australia. *Biological Conservation* 204: 83–93.
- Satler JD, Carstens BC (2016) Phylogeographic concordance factors quantify phylogeographic congruence among co-distributed species in the *Sarracenia alata* pitcher plant system. *Evolution* 70: 1105–1119.
- Sersic AN, Cosacov A, Cocucci AA *et al.* (2011) Emerging phylogeographical patterns of plants and terrestrial vertebrates from Patagonia. *Biological Journal of the Linnean Society* 103: 475–494.
- Simmons MP, Ochoterena H (2000) Gaps as characters in sequence-based phylogenetic analyses. *Systematic Biology* 49: 369–381.
- Smith AB, Godsoe W, Rodríguez-Sánchez F, Wang HH, Warren D (2019). Niche estimation above and below the species level. *Trends in Ecology and Evolution* 34: 260–273.
- Sobel ER, Strecker MR (2003) Uplift, exhumation and precipitation: Tectonic and climatic control of late Cenozoic landscape evolution in the northern Sierras Pampeanas, Argentina. *Basin Research* 15: 431–451.
- Souto CP, Mathiasen P, Acosta MC, Quiroga MP, Vidal-Russell R, Echeverría C, Premoli AC (2015) Identifying genetic hotspots by mapping molecular diversity of widespread trees: when commonness matters. *Journal of Heredity* 106: 537–545.
- Strecker MR, Alonso RN, Bookhagen B, Carrapa B, Hilley GE, Sobel ER, Trauth MH (2007) Tectonics and climate of the southern central Andes. *Annual Review of Earth and Planetary Sciences* 35: 747–787.
- Szumik C, Aagesen L, Casagrande D *et al.* (2012) Detecting areas of endemism with a taxonomically diverse data set: plants, mammals, reptiles, amphibians, birds, and insects from Argentina. *Cladistics* 28: 317–329.
- Turchetto-Zolet AC, Salgueiro F, Turchetto C *et al.* (2016) Phylogeography and ecological niche modelling in *Eugenia uniflora* (Myrtaceae) suggest distinct vegetational responses to climate change between the southern and the northern Atlantic Forest. *Botanical Journal of the Linnean Society* 182: 670–688.
- van Schaik J, Dekeukeleire D, Kerth G (2015) Host and parasite life history interplay to yield divergent population genetic structures in two ectoparasites living on the same bat species. *Molecular Ecology* 24: 2324–2335.
- Vargas OM, Ortiz EM, Simpson BB (2017) Conflicting phylogenomic signals reveal a pattern of reticulate evolution in a recent high-Andean diversification (Asteraceae: Astereae: *Diplostephium*). *New Phytologist* 214: 1736–1750.
- Wright S (1978) *Evolution and the Genetics of Populations: A Treatise in Four Volumes: Vol. 4: Variability within and among Natural Populations*. Chicago, IL, USA: University of Chicago Press.