

Cosmic ray modulation by corotating interaction regions

Jaša Čalogović¹, Bojan Vršnak¹, Manuela Temmer² and
Astrid M. Veronig²

¹Hvar Observatory, Faculty of Geodesy, Kačićeva 26, HR-10000 Zagreb, Croatia

²Institute of Physics, University of Graz, Universitätsplatz 5, A-8010 Graz, Austria
email: jcalogovic@geof.hr

Abstract. We analyzed the relationship between the ground-based modulation of cosmic rays (CR) and corotating interaction regions (CIRs). Daily averaged data from 8 different neutron monitor (NM) stations were used, covering rigidities from $R_c = 0 - 12.91$ GeV. The *in situ* solar wind data were taken from the Advanced Composition Explorer (ACE) database, whereas the coronal hole (CH) areas were derived from the Solar X-Ray Imager onboard GOES-12. For the analysis we have chosen a period in the declining phase of solar cycle 23, covering the period 25 January–5 May 2005. During the CIR periods CR decreased typically from 0.5% to 2%. A cross-correlation analysis showed a distinct anti-correlation between the magnetic field and CR, with the correlation coefficient (r) ranging from -0.31 to -0.38 (mean: -0.36) and with the CR time delay of 2 to 3 days. Similar anti-correlations were found for the solar wind density and velocity characterized by the CR time lag of 4 and 1 day, respectively. The relationship was also established between the CR modulation and the area of the CIR-related CH with the CR time lag of 5 days after the central-meridian passage of CH.

Keywords. (ISM:) cosmic rays, (Sun:) solar wind, (Sun:) solar-terrestrial relations

1. Introduction

Corotating interaction regions (CIRs) are regions of compressed plasma formed at the leading edges of corotating high-speed solar wind streams originating in coronal holes (CHs) as they interact with the preceding slow solar wind. CIRs and high speed streams modulate galactic cosmic rays (GCR), thus influencing the flux of cosmic rays (CR) at the Earth (e.g. Richardson 2004). With the aim to improve space weather predictions, we investigated the relationship between CR and CIR.

2. Data and method

The daily averaged count rates from 8 different NM stations were used, supplied by SPIDR website (<http://spidr.ngdc.noaa.gov/spidr>). NM stations were selected to cover all latitudes and longitudes (3 NM stations in high, 3 in middle and 2 in low latitudes; see Table 1) with the cut-off rigidities ranging from $R_c = 0 - 12.91$ GeV.

Given that high solar activity and CMEs strongly affect CR, we avoided a period with CME activity. A period close to the declining phase of solar cycle 23 was selected, covering 25–125 (25 January until 5 May) days of the year (DOY) 2005. In this period the solar CME activity was particularly low (Vršnak *et al.* 2007a).

The data on proton density n , proton speed v , and magnetic field strength B were taken from the Advanced Composition Explorer (ACE) database (Stone *et al.* 1998). Daily solar coronal hole areas were determined employing the data from Solar X-Ray

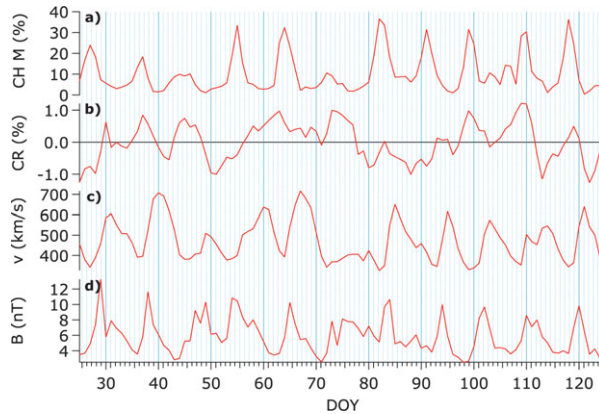


Figure 1. a) Daily measurements of the CH fractional area in the M slice, b) Relative cosmic ray change measured with Climax neutron monitor ($R_c = 3.03$ GeV), c) ACE daily averages of the proton velocity v , and d) magnetic field strength B . The x -axis represents DOY for 2005.

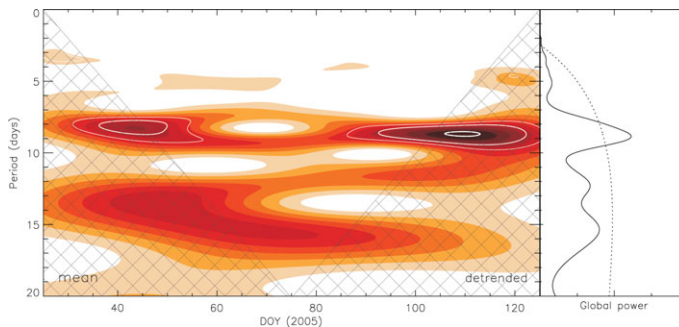


Figure 2. Averaged WPS (left) and GWS (right) for all 8 NM stations together. Analyzed time span is from 25 January 2005 until 5 May 2005 (DOY 25–125). The cone of influence is indicated by cross-hatched regions. With the white contour lines are marked the significance levels of 70 % (thin white line), 80 % (thicker white line) and 90 % (the thickest white line). The dotted line in the GWS represents the 95 % significance level.

Imager (SXI) on board the GOES-12 satellite, where the coronal holes appear as dark features in X-ray images (Hill 2005; Pizzo 2005). Using one SXI level-2 image per day, fractional areas of coronal holes were extracted in three meridional slices in the longitude range: CH E [-40° -20°], CH M [-10° 10°] (Fig. 1a) and CH W [20° 40°], for details see Vršnak *et al.* (2007b).

With an emphasis on daily variations in the CR, the NM data were detrended. The detrended NM data were cross-correlated with the CH areas and solar wind data, allowing for time lags of up to 10 days. The statistical significance was tested using one sided t-test on 5 % level.

To determine the predominant periods in the NM data, as well as their times of appearance, wavelet power spectra (WPS) and global wavelet spectra (GWS) were used (Morlet wavelet; see Temmer *et al.* 2007).

3. Results

In Fig. 1a the CH fractional area for the central meridian slice is presented as a function of DOY 2005. Oscillations of the CH area show the most prominent period of about 9

	CH E	CH M	CH W	v	B	n
NM South Pole	-0.33 (6)	-0.31 (4)	-0.30 (3)	-0.21 (0)	-0.31 (2)	-0.24 (4)
NM Thule	-0.16* (7)	-0.20 (4)	-0.14* (3)	-0.09* (0)	-0.37 (2)	-0.23 (4)
NM Magadan	-0.34 (7)	-0.33 (5)	-0.34 (3)	-0.24 (0)	-0.33 (2)	-0.20 (4)
NM Jungfraujoch	-0.31 (8)	-0.26 (5)	-0.32 (4)	-0.21 (2)	-0.35 (3)	-0.22 (4)
NM Climax	-0.34 (7)	-0.31 (5)	-0.31 (3)	-0.20 (1)	-0.38 (3)	-0.33 (4)
NM Hermanus	-0.27 (7)	-0.27 (5)	-0.27 (3)	-0.11* (1)	-0.38 (3)	-0.32 (4)
NM Haleakala	-0.23 (7)	-0.26 (5)	-0.32 (3)	-0.20 (1)	-0.34 (3)	-0.16* (4)
NM Tibet	-0.34 (7)	-0.39 (5)	-0.41 (3)	-0.27 (1)	-0.38 (3)	-0.18 (4)
average	-0.29 (7.00)	-0.29 (4.75)	-0.30 (3.13)	-0.19 (0.75)	-0.36 (2.63)	-0.24 (4.00)
σ	0.065	0.056	0.078	0.062	0.026	0.063

Table 1. Correlation coefficients between the CR measured at 8 different NM stations and CH areas (three meridional slices in the longitude range: east - CH E, middle - CH M, west - CH W), magnetic field B , proton speed v and density n . The highest correlation coefficient in the 10-days lag period is shown. Numbers in brackets indicate corresponding lag in days. All NM data are detrended. The non-significant values are marked with *.

days (Temmer *et al.* 2007), which can be explained by a “triangular” distribution of large CHs, separated by $\approx 120^\circ$ in longitude. Similar oscillations we find also in the Climax NM data (Fig. 1b), as well as in the solar wind parameters data (proton speed v in Fig. 1c and magnetic field B in Fig. 1d). During the CIR passage the CR decreased typically from 0.5% to 2% (Fig. 1b). Figure 2 shows the detected periods in the CR data using a Morlet wavelet, where the most prominent period is also in the range of 9 days (DOY 30 – 125) and slightly weaker periods are in the range of 13.5 days (DOY 20 – 65) as well as 12 and 15 days (DOY 65–115).

The results of a cross-correlation analysis are presented in Table 1 for each NM station, where the highest correlation coefficients (r) within a 10-day lag period are shown. First three columns reveal a distinct anti-correlation (mean $r = -0.29$) between the area of the CIR-related CH and the CR modulation. Depending on the CH slice, CR show time lag of 7, 5, and 3 days for the east, middle and west CH slice, respectively. A significant relationship was also established between CR and solar wind parameters: v , B and n (Table 1). The highest correlations with CR was obtained for the magnetic field B with the CR time delay of 2 to 3 days, followed by proton density n (time lag 4 days) and proton velocity v (time lag 0–1 day).

4. Conclusions

The magnetic field enhancement forming at frontal edge of high-speed streams in the solar wind acts as a shield that reduces GCR flux at 1AU by 0.5%–2%. The effect is especially prominent during the declining phase of the solar cycle, when the occurrence rate of equatorial CHs is increased and the CME activity is low. A typical lag between the magnetic field peak and the CR dip is 2–3 days.

References

- Hill, S. M. *et al.* 2005, *Solar Phys.*, 226, 255
Pizzo, V. J. *et al.* 2005, *Solar Phys.*, 226, 283
Richardson, I. G. 2004, *Space Sci. Revs.*, 111(3), 267
Stone, E. C., Frandsen, A. M., Mewaldt, R. A., Christian, E. R., Margolies, D., Ormes, J. F., & Snow, F. 1998, *Space Sci. Revs.*, 86, 1
Temmer, M., Vrsnak, B., & Veronig, M. A. 2007, *Solar Phys.*, 241, 371
Vrsnak, B., Temmer, M., & Veronig, M. A. 2007a, *Solar Phys.*, 240, 331
Vrsnak, B., Temmer, M., & Veronig, M. A. 2007b, *Solar Phys.*, 240, 315