

Cultural legacies and political preferences: the failure of separatism in the Swiss Jura

DAVID S. SIROKY^{1*}, SEAN MUELLER² AND MICHAEL HECHTER^{3,4}

¹Assistant Professor, School of Politics and Global Studies, Arizona State University, Tempe, AZ, USA

²Lecturer, Institute of Political Science, University of Berne, Berne, Switzerland

³Foundation Professor, School of Politics and Global Studies, Arizona State University, Tempe, AZ, USA

⁴Professor of Sociology, Department of Sociology, University of Copenhagen, Copenhagen, Denmark

The study of secession generally stresses the causal influence of cultural identities, political preferences, or ecological factors. Whereas these different views are often considered to be mutually exclusive, this paper proposes a two-stage model in which they are complementary. We posit that cultural identities matter for explaining secessionism, but not because of primordial attachments. Rather, religious and linguistic groups matter because their members are imbued with cultural legacies that lead to distinct political preferences – in this case preferences over welfare statism. Further, ecological constraints such as geography and topography affect social interaction with like-minded individuals. On the basis of both these political preferences and ecological constraints, individuals then make rational choices about the desirability of secession. Instrumental considerations are therefore crucial in explaining the decision to secede, but not in a conventional pocketbook manner. To examine this theory, we analyze the 2013 referendum on the secession of the Jura Bernois region from the Canton of Berne in Switzerland, using municipal level census and referendum data. The results lend support to the theory and suggest one way in which the politics of identity, based on factors like language and religion, can be fused with the politics of interest (preferences for more or less state intervention into the polity and economy) to better understand group behavior.

Keywords: secession; referendum; welfare statism; cultural identities; ecological constraints; rational choice

Introduction

Secession is a phenomenon that affects both developing countries (e.g. Georgia, China, Russia, Ukraine, Nigeria) as well as developed ones (e.g. Spain, Canada, United Kingdom, France, Italy). In several European democracies, like the United Kingdom and Spain (Muñoz and Guinjoan, 2013; Muñoz and Tormos, 2014), secessionist demands are accompanied by calls for a referendum to decide the question once and for all. In others, such as France, Belgium, and Italy, secession is at least sporadically invoked in political discourse when demanding more territorial group rights or fewer payments to poorer areas (Coppieters and Huysseune, 2002; Lindsey, 2012).

Despite these developments in European politics, scholars continue to disagree over the relative importance of different mechanisms for understanding secession.

* E-mail: david.siroky@asu.edu

Some argue that cultural factors, such as emotions, affect, and social identity, are key to explaining nationalism and separatism (e.g. Smith, 1986; Connor, 1994; Petersen, 2002), whereas others think that they can best be understood in terms of rational action (e.g. Buchanan and Faith, 1987; Wittman, 1991; Bookman, 1992; Bolton and Roland, 1997; Collier and Hoeffler, 2002; Sorens, 2012). Still others emphasize structural constraints on individual decision-making through geographically constrained social networks (Jenkins, 1986; Lipset and Rokkan, 1990 [1967]; Rutherford *et al.*, 2014). Thus, whereas some scholars see secession as largely a matter of the heart, others see it as structurally determined, and others have given pride of place to the head in making such decisions.

In this article, we contend that neither cultural, rational nor structural approaches by themselves are sufficient to account for secession. Consistent with research in historical institutionalism (Steinmo *et al.*, 1992; Katznelson and Weingast, 2005; Steinmo, 2008), we conceptualize these explanations as inextricably linked. Specifically, we argue that whereas a cultural logic can account for the *origin* of political preferences, and structural approaches explain the *constraints* on decision-making, rational accounts can predict how actors *behave* when attending to these preferences in the face of ecological constraints. A more complete understanding of the determinants of separatism thus requires taking all of these logics seriously. The theory presented here stipulates that cultural identities matter by shaping political preferences for more or less *statism*, which in turn informs voting behavior on secession together with ecological factors. Hence, we identify one (but not the only) possible mechanism by which cultural identity influences secessionism through its effect on political preferences for statism (cf. Sorens, 2012). By statist political preferences, we mean preferences pertaining to the general purpose of government, ranging from only minimal interventionism to maximal provision of public goods (Mitchell, 1991). By ecological factors, we are referring primarily to arguments that discuss how geography and topography shape social networks, information flow, collective action, and decision-making (Jenkins, 1986).

To test these claims while accounting for alternative explanations, we analyze the results of a referendum held on 24 November 2013 in the Swiss region of *Jura Bernois*. The vote concerned whether this region with some 50,000 largely French-speaking and Protestant inhabitants should leave Canton Berne (a largely German-speaking and Protestant entity with 900,000 inhabitants) to join Canton Jura (a predominantly French-speaking and Catholic entity with 70,000 inhabitants). Although the secession of that region from Berne Canton was eventually defeated (72% against vs. 28% in favor), the referendum results exhibited considerable variation across the 49 municipalities with a spread of >50% points (from 2% up to 54% in favor).

The next section examines existing theories that might help us to explain variation in the vote on secession, and then presents our own theory. We then apply these reflections to the situation at hand and explain our case selection. Next, we present our methods and data, and discuss the main findings. The final section concludes with some general implications and avenues for further research.

Theory

The large literature on secession can be usefully divided into three main approaches. The first is a *culturalist* approach that emphasizes the role of shared values in shaping political behavior (Almond and Verba, 1965; Smith, 1986; Connor, 1994). On this account, Dutch-speakers (e.g. in Flanders) should want to live with and be ruled by other Dutch-speakers, and Catholics (e.g. in Northern Ireland) should aim for the same. The implication is that individuals prefer to be ruled by natives rather than by cultural aliens (Hechter, 2013). Moreover, people tend to carry these supposedly immutable identities with them when they move, at least in the short run, rather than adapting to their new cultural context (Connor, 1994). Thus, the immigration of people with a specific cultural background may influence the strength of a particular cultural marker, thereby shaping the demand for separation or unification on the basis of that identity.

The second approach is *rationalist*. Researchers in this tradition typically focus on the economic consequences of secession for individuals (e.g. Buchanan and Faith, 1987; Wittman, 1991; Bookman, 1992; Bolton and Roland, 1997; Nadeau *et al.*, 1999; Collier and Hoeffler, 2002). Another rationalist stream of research asserts that the relative position of groups in the stratification system privileges certain social identities over others (Hechter, 1978; Horowitz, 1985; Wimmer, 2002; Cederman *et al.*, 2013). Thus, when a cultural group is relegated to a subordinate position in the stratification and political systems, this affects its members' life chances, thereby intensifying the political salience of the cultural marker that is associated with their subordination. When full inclusion appears unlikely or cannot be offered credibly, the subordinate group may demand more self-rule (Sorens, 2012).

The last approach is *structuralist*. Some of these accounts are based on the idea that the social networks that facilitate collective action are fundamentally constrained by geographic factors, such as distance and topography (Rokkan and Urwin, 1983; Jenkins, 1986; Lipset and Rokkan, 1990 [1967]; Rutherford *et al.*, 2014). For example, the greater the distance from a center to its peripheries, 'the greater the risk that these will become the nuclei of independent center formation' (Rokkan and Urwin, 1983: 16), hence the looser the bonds that tie the two together and the more likely secession is to occur. Whatever their origin social networks may promote in-group altruism that fosters collective action [but see Simpson *et al.* (2014) for some disconfirming evidence].

These three explanations – cultural, rational, and structural – are all plausible but incomplete accounts for secession.¹ Why, for instance, do people who share multiple cultural identities (each of which might become politically relevant) emphasize

¹ A fourth school of thought is institutional. Certain institutional arrangements reinforce certain identities (e.g. Slezkin, 1994) at the expense of other (non-institutionalized) identities, but we do not cover this approach here because all entities in the Swiss case have – at least formally – the same basic arrangement

one over another when a choice is required? The Swiss case presents us with a situation in which people are deciding whether to remain a linguistic minority or to become a linguistic majority but a religious minority. Cultural logic seems unable to specify which of these different identities serves as the basis for political identification and decision-making. Nor can a cultural approach easily explain why a group's linguistic identity trumps its religious identity in some situations but not in others, or why there is a change in political salience over time and in different contexts, or when multiple identities might be mutually reinforcing rather than cross-cutting or conflicting. The problem is that most studies of ethnic, linguistic, and religious conflict take the existence of cultural differences for granted. However, as individuals almost always possess multiple social identities (e.g. Simmel, 1955; Roccas and Brewer, 2002), this practice is questionable and the assumption of cultural differences that matter politically must itself be explained (Posner, 2004). Moreover, the mechanism of cultural homophily (McPherson *et al.*, 2001; Simpson *et al.*, 2014) may not be the only, or the most important, reason for the political effects of cultural identities: to have an effect, cleavages also need to be activated by political entrepreneurs (Rokkan and Urwin, 1983; Lipset and Rokkan, 1990 [1967]).

Rationalist approaches suffer from their own shortcomings. First, all rationalist analyses take cultural identities for granted, treating them as exogenous to their explanatory apparatus, even though such identities are themselves the product of other processes and factors and may change over time and contexts. Second, although rationalists typically assume that the demand for secession emanates primarily out of instrumental – that is, economic – considerations (Sambanis and Milanovic, 2014), sometimes pocketbook issues only play a minor role (Toft, 2012: 586). As Horowitz notes, in some cases ‘the decision to secede is taken *despite* the economic costs it is likely to entail’ (1985: 237, emphasis added; cf. Loveman, 1998). Finally, although structural constraints such as distance and topography affect network formation and limit the choices available to individuals, there is no warrant to believe that they are the sole or main determinants of political behavior, for individuals in similar structural positions can – and often do – exhibit disparate behavior.

We argue that these approaches require integration, as culture explains the origin of political preferences; spatial features such as topography and distance shape interaction opportunities, thereby reinforcing or undercutting preference homogeneity; and rationality explains the choices made on the basis of the resulting preferences. Figure 1 depicts this framework schematically.

At the left of the figure are cultural legacies [or what Bourdieu (1977) terms *habitus*], which we hypothesize shape political preferences. These legacies comprise the lifestyle,

(local and cantonal autonomy), and thus this approach cannot account for the sub-national variation observed here, though it may be applicable in other settings.

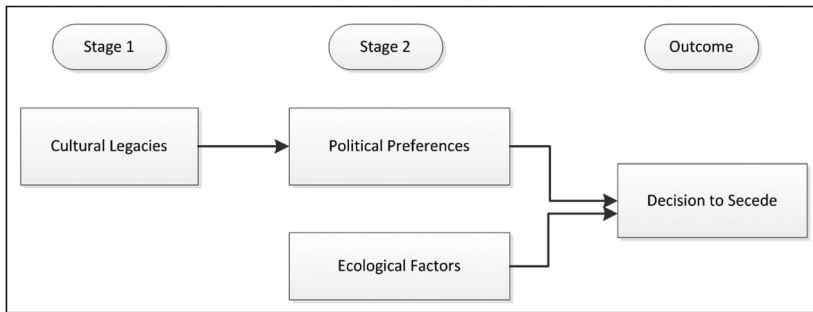


Figure 1 Two-stage theoretical model.

values, dispositions, and expectations of particular social groups that are acquired through the activities and experiences of everyday life (Nisbett and Cohen, 1996; Alesina and La Ferrara, 2000; Talhelm *et al.*, 2014).² For example, it has long been appreciated that some religious groups have more individualistic values, whereas others are more collectivist (Durkheim, 1951; Davis and Robinson, 2012). Collectively oriented religions, such as Catholicism, tend to view the state as a vehicle that has a moral responsibility to protect the most vulnerable members of society. In general, Catholics have a greater taste for redistributive welfare policies, and for a moralistic foreign policy, than Protestants (Castles, 1994). By contrast, more individualistic religions, like many Protestant denominations, emphasize hard work and individual responsibility, which they believe promotes independence and self-reliance, over state-provided welfare. It follows that the resulting policies from this tradition favor equality of opportunity over redistribution.³

However, religion is far from the only source of political preferences. Language groups may also confer specific political preferences. Consider the two relevant languages in our empirical analysis: German and French. It is widely appreciated that France has a much stronger tradition of statism and centralization than Germany, a federal country with ample regional differences in wealth, policy, and history. By the same token, Francophone areas of bi-national states such as Belgium are often more left-leaning than their English- or Dutch-speaking counterparts, which helps to explain why the Socialists are the major party in Wallonia but not in

² For excellent examples of legacy-based arguments, see Bustikova and Corduneanu-Huci (2015), Charron and Lapunte (2013), Darden and Gryzmala-Busse (2006), Kitschelt *et al.* (2009), Kopstein and Wittenberg (2011), Peisakhin (2015), Pop-Eleches (2007), Pop-Eleches and Tucker (2011), Shefter (1977, 1994), and Wittenberg (2006, 2015).

³ We are well aware that the strongest welfare states in Europe exist in predominantly Protestant countries (as in Scandinavia), but *individual-level* evidence from cross-national surveys indicates that religious Catholics are more collectivist than religious Protestants (see Burnham, 1967; Davis and Robinson, 2012). One pillar of strong Scandinavian welfare states is their powerful trade unions, which is not primarily due to the collectivist attitudes of Protestants, but rather to the adoption of institutions like the Ghent system for the distribution of welfare benefits in these countries (Hechter, 2004).

Flanders (Deschouwer, 2009: 127–132). Similarly, ‘Quebecers’ collective identity is defined around specific political values mostly associated to the left of the political spectrum’ (Bühlmann and Caroni, 2013: 222). In Switzerland, too, French-speakers are regarded as more open to Europe and the world, and more in favor of social redistribution as well as state intervention, than German-speakers (Linder *et al.*, 2008: 63, 186; Bühlmann and Caroni, 2013).

The contrast becomes even stronger when comparing Berne Canton (predominantly German-speaking and Protestant) with Jura Canton (predominantly French-speaking and Catholic). For example, at the federal parliamentary elections of 2011 (elected using proportionality), in Jura the Christian-Democrats came first, with 33.2% of the vote, followed by the Socialists, with 30.8%. In Berne, by contrast, the national-conservative People’s party came first, with 29%, followed by the center-right party BDP (*Bürgerlich-Demokratische Partei*), with 14.9% [Bundesamt für Statistik (Federal Statistical Office) (BFS), 2015]. Also note that, particularly with regard to social welfare, Swiss Christian-Democrats have moved to the left, while right-wing parties are staunchly pro-market (Fossati and Häusermann, 2014: 598f.). Accordingly, in Armingeon *et al.*’s (2004: 35) classification of cantonal ‘worlds of welfare’, Berne belongs to the liberal-conservative type whereas Jura is predominantly social-democratic.

According to our theory, ecological factors can either enhance or detract from this effect of cultural legacies on political preferences. When ecology serves as a barrier to intra-group interaction, the effect of cultural legacies on political preferences is attenuated. For example, a mountain range may cut off an otherwise homogenous territory and produce separate ways of life and political preferences. Likewise, due to residential sorting, people born in the same city may have opposite political preferences based on exactly where they live in it (Cox, 2002: 148). However, when ecology facilitates intra-group interaction, the effect of cultural legacies is reinforced. Research on cross-border regions confirms that ‘physical proximity [...] has less to do with pure distance measured in kilometers between different actors, than with the efforts it takes for them to interact in terms of time and costs’ (Lundquist and Trippel, 2013: 53). Related to proximity are more material and practical concerns, including economies of scale and spillover effects, for example job opportunities (in public administration in Delémont, which would grow and become more influential in an expanded Jura), and exposure to common news outlets (Lundquist and Trippel, 2013).

Once political preferences have been formed, our model predicts that people then act based on those preferences, given ecological constraints. In our case, it is *statist* preferences that primarily shape the decision to secede. When current state policy is largely congruent with the values of particular cultural groups, these groups can be considered to be more or less politically satisfied, and they are therefore oriented toward the *status quo* and non-secession. But when state policies are at variance with the preferences of cultural groups, then some political tension is bound to occur (Alesina and La Ferrara, 2000). Hence, when afforded the opportunity to choose, as in secession referenda, cultural groups will prefer to be ruled by those

who share their values rather than by the representatives of groups espousing different values, all else equal. Being ruled by those with *different* preferences about the role of government can be perceived as alien rule and therefore illegitimate (Hechter, 2013). It is illegitimate not only because it violates the pervasive norm of collective self-determination (as advanced, e.g., in the United Nations Charter), but also because the former group usually suffers from sub-optimal governance at the hands of alien rulers. Hence, minority language groups typically desire state recognition of their language; members of minority religions claim the same as regards their faith, and so forth. This kind of demand lies at the heart of all nationalist and secessionist movements (Hechter, 2000). Hence, were it given the choice, every distinctive cultural group should prefer to be ruled by its own kind rather than by cultural aliens. Indeed, ethnic voting around the world is pervasive, especially in multinational African and Asian countries, but also in Europe. The first elections in Bosnia in 1990, for example, were deemed ‘indistinguishable from an ethnic census’ (Bieber, 2006, table 2.7). Many elections around the world are similar, even in societies that are not war-torn.

Next, we apply this theoretical model to the case of Jura separatism.

Why Jura Bernois chose not to secede

On 24 November 2013, a majority of 72% in the Jura Bernois region of Switzerland voted to remain in the Canton of Berne. With an average turnout of 76% across the 49 municipalities concerned, and one even attaining 97%, people clearly cared enough to vote on this issue.⁴ The outcome of the referendum revealed that people value the *status quo*, in which they are a tiny *linguistic* minority of 6% in a *large* canton with 900,000 inhabitants, over one in which they would have been a *substantial religious* minority of 42% in a *medium-sized* canton of 120,000 inhabitants after unification. This begs the question: Why was religious homophily with the rest of Berne more important for Jura Bernois than linguistic homophily with Jura, when joining Jura would have increased the group’s relative size, and presumably its political influence?

Once we take into account the history of Switzerland, the puzzle becomes even more intriguing. When the Swiss polity was reshaped in the wake of the Napoleonic wars during the Congress of Vienna in 1815, several of the pre-1798 cantonal powers were restored, but with significantly reduced territorial borders. This was particularly the case for Canton Berne, whose extensive territorial losses to the North and South were compensated by awarding it the former Prince-Bishopric of Basel in its North-West, on the border with France (Mueller, 2013: 94). Following a history of post-WWII political mobilization, leading up to a referendum cascade at the regional, district, and local levels between 1974 and 1975, the predominantly

⁴ As in Switzerland every citizen entitled to vote is registered automatically, these turnout figures refer to the share of votes cast from among all eligible voters.

French-speaking and Catholic region in very North-West of that area seceded from the predominantly German-speaking and Protestant Canton of Berne to form the Canton of Jura (Laponce, 2012: 124–126; see also Jenkins, 1986). Yet, the Jura Bernois region chose to remain part of Berne rather than join the new Canton of Jura in 1974 (Crevoisier, 2012). Despite this initial rejection, the architects of the new Canton of Jura continued to campaign for a unified French-speaking canton (Rennwald, 1995; Ganguillet, 1998; Pichard, 2004).

After 40 years of political struggle, the elite of Jura managed to hold a new referendum on the unification of Francophones in Jura Bernois and Jura Canton (Schumacher, 2005). The 2013 referendum took place in the two areas, Jura Canton and Jura Bernois, and asked whether voters in these two regions wanted to initiate a process whereby a draft constitution for the entire French-speaking region of the former Prince-Bishopric would be launched. If accepted in *both* areas, the first step toward (re)uniting the two territories into a French-speaking canton of their own would have been taken. However, the plan was decisively rejected by the Francophone Protestants in Jura Bernois. Although 75% of the voters in Jura Canton supported the idea of receiving Jura Bernois, 72% of the voters in Jura Bernois voted *against* leaving Berne for Jura. Figure 2 displays the share of ‘yes’-votes across the two regions, North (Jura) and South (Jura Bernois), and across the 106 municipalities, the lowest level at which referendum data are available.

Imagine for a moment that the referendum had passed and the two entities became united. The current majority in Jura Bernois, the French-speaking Protestants, would have become a *religious* minority in a reunited territory, while the French-speaking Catholics would have retained their majority position in *both* religious *and* linguistic terms. Clearly, then, unification would have been a better deal in this respect for Jura than for Jura Bernois, and this is likely part of the reason why the former voted 75% in favor of unifying, whereas only 28% voted for unification in the latter. That said, Jura Bernois is still a *linguistic* minority in Berne Canton, and therefore the question remains why an overwhelming majority in Jura Bernois revealed their preference to be ruled by a linguistically rather than a religiously alien group.

One reason for this might be that language is constitutionally protected in Switzerland, with its territorial borders fixed by both cantonal and federal law (Richter, 2005: 159), in a way that religion is not (cf. Brubaker, 2013). But even so, this would not explain intra-regional variation – of the 49 communes in Jura Bernois,⁵ approval ranged from 2 to 55% (see also Table A1 in the Appendix). On the culturalist view, as Jura is French-speaking and Catholic, the municipalities of Jura Bernois that had more Catholics and French-speakers should favor seceding and joining Jura, as this would have resulted in native rule on *both* cultural dimensions. Further, if religion were more salient than language, then the two

⁵ The lowest political-administrative level in Switzerland is formed by communes, used here synonymously with local government and municipalities.

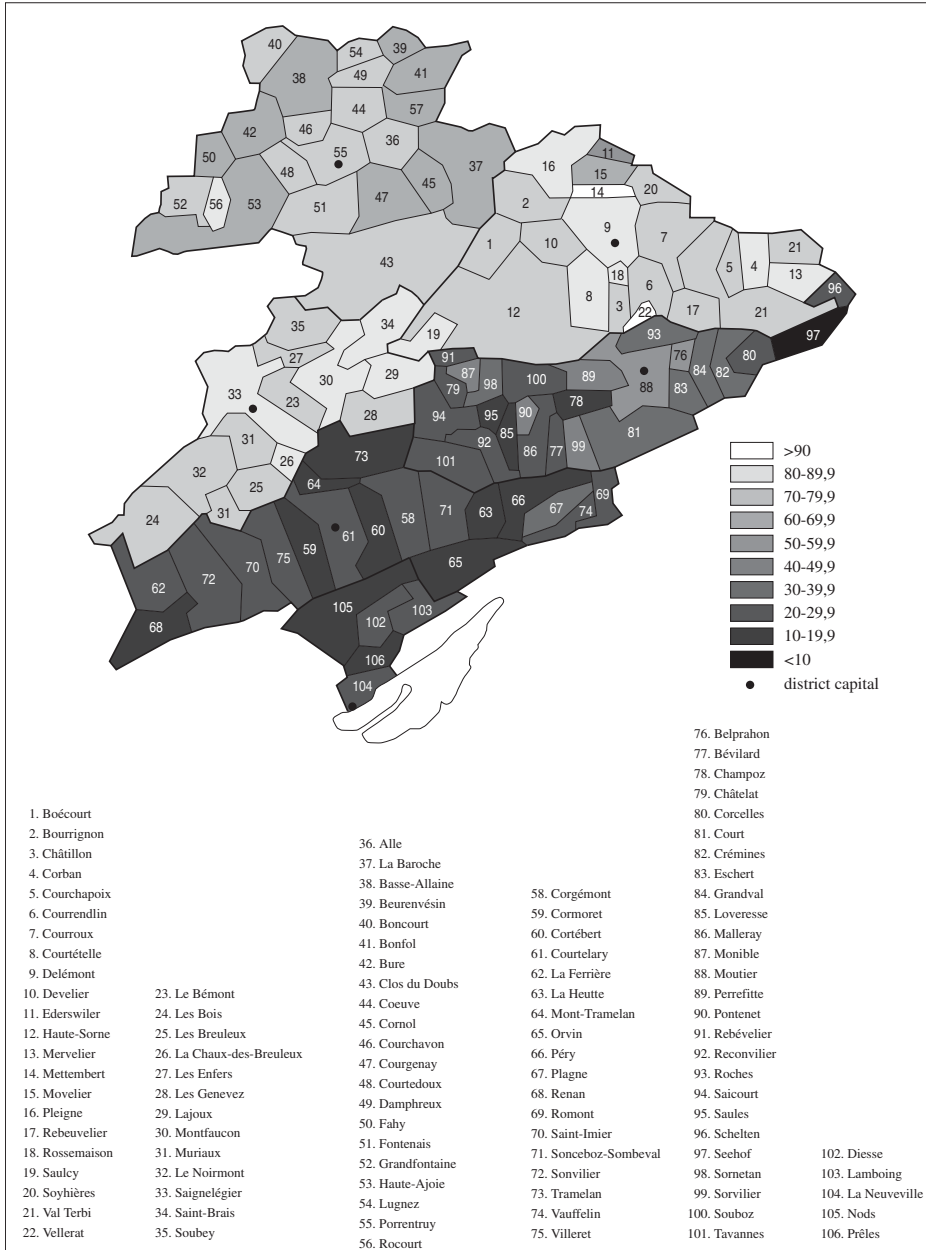


Figure 2 Distribution of ‘yes’-votes in the 2013 referendum (Jura and Jura Bernois).

Catholic groups (French- and German-speaking Catholics) should be the most and second most in favor of joining Jura, followed by the two Protestant groups (French- and German-speaking). The Protestants should be the least in favor of

joining Jura, as neither would want to be ruled by an alien cultural group. If language was more salient than religion, then we should observe the French-speakers, whether Protestant or Catholic, being more in favor of secession from Berne than the German-speakers of both religions. However, if neither language nor religion by themselves are important predictors of secession, but operate through political preferences and are constrained by ecological factors, then the models incorporating political and ecological factors should better predict the 2013 vote. This leads us to three primary hypotheses on cultural legacies, political preferences, and ecological constraints:

HYPOTHESIS 1: Municipalities with more French-speakers and more Catholics are more likely to vote in favor of seceding from Berne.

HYPOTHESIS 2: Municipalities with more statist political preferences are more likely to vote in favor of seceding from Berne.

HYPOTHESIS 3: Municipalities more proximate to the capital of Jura Canton (Delémont) are more likely to vote in favor of seceding from Berne.

After discussing our case selection in the next section, we operationalize and test these hypotheses.

Why Switzerland?

Before proceeding to the analysis, it is worth discussing the logic and limits of our case selection. Although there are important differences between internal and external secessions – especially, the greater amount of risk-aversion involved in an external secession (Nadeau, Martin and Blais, 1999) – there are three good reasons why testing our theory in this particular setting might be instructive. The first concerns the ostensibly clear distinction between internal and external secession, which we think has been sometimes exaggerated (Simeon, 2009; Gilliland, 2012). On the one hand, secession in Western Europe rarely entails full independence. Most separatist movements do not seek total separation, but desire to remain in multinational governance units like the European Union, the European Monetary Union, or NATO (Sorens, 2012). On the other, federal states usually are characterized by autonomous regions that produce similar kinds of public goods that nation-states produce elsewhere. Such is the case for the Swiss Cantons: they have their own government, parliament, and courts as well as power over police, taxes, education, transport, health care, and social services, to name but the most important areas (Vatter, 2014). This significantly blurs the line between external and internal secession, and suggests that lessons learned from the study of internal secessions can speak to our understanding of external secessions (such as in Scotland).

Second, moving the analysis from the cross-national to the sub-national level increases the number of cases to be compared (Snyder, 2001). This is an important

consideration for theory development, as there are only so many referenda on secession that have been allowed to take place (Qvortrup, 2014). Further, this kind of sub-national analysis affords researchers with considerable variation on the dependent variable (voting for secession) without having to control for numerous potential causal factors that differ across countries (Lijphart, 1971).

The third and final reason for studying the case of Jura Bernois is perhaps the most important theoretically. Overlapping identities in Jura Bernois – its majority population is French-speaking, as in the canton to be joined, but also Protestant, as in the canton to which it currently belongs – provide us with an excellent opportunity to investigate a crucial debate in the study of identity politics. In this case of cross-cutting cleavages, we can parse out the relative importance of language, ‘a pervasive, inescapable medium of social interaction’ (Brubaker, 2013: 5), and religion, a key determinant of values and enduring political preferences (Jordan, 2014) and short-term voting behavior (Goldberg, 2014; Rapp *et al.*, 2014). The people of Jura Bernois are faced with a choice between belonging to a political entity in which they are a linguistic minority or another in which they are a religious minority.

Analysis

To test our theory as well as its alternatives, we have merged census with referendum and other political and socio-economic data. As the focus of this article is on secession rather than irredentism, our analysis will be confined to the political behavior in Jura Bernois. Hence, our dependent variable is the proportion of approving voters (yes-votes) in a given municipality in the November 2013 referendum, which is drawn from the official website of the Government of Berne.⁶ As Figure 3 shows, there is considerable variation in the aggregate percentage in favor of unification in Jura Bernois, with one municipality – the regional capital, Moutier – narrowly approving and one other municipality – neighboring Belprahon – resulting in a tie. Data for all independent and control variables were aggregated to the level of municipalities as of November 2013 to make them compatible (for descriptive statistics, see Table A1 in the Appendix).

To evaluate the straightforward culturalist explanation based on linguistic and religious homophily, we measure the proportion of French-speakers, Catholics, and French-speaking Catholics in each municipality. As Jura Bernois was deciding on whether to leave a largely German-Protestant Canton (Berne) for a predominantly French-Catholic one (Jura), on this view the more members of each of these groups in each municipality, the more it should be in favor of separation from Berne. To calculate the share of the respective groups in a municipality, we used the census data from 2000, the last year in which all residents were assessed by the BFS.

⁶ Cf. <http://www.sta.be.ch/sta/de/index/wahlen-abstimmungen/wahlen-abstimmungen.html> (retrieved December 2014).

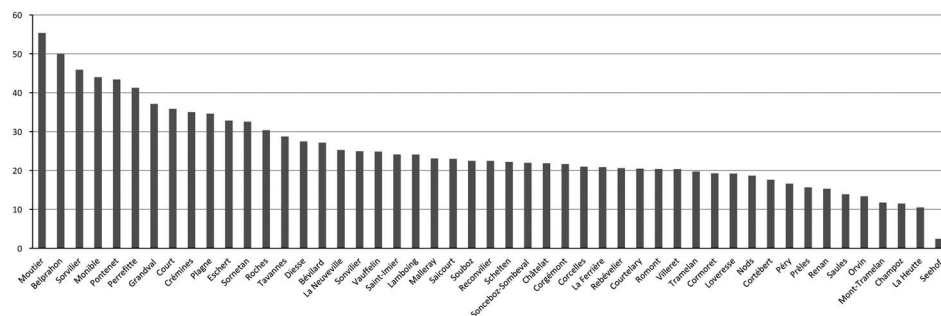


Figure 3 Share of yes-votes in Jura Bernois (2013).

If cultural identities have enduring effects, and people carry their preferences with them to their new voting municipalities, then migration patterns should influence the vote. As French-Catholics should be most in favor of merging Jura Bernois with Jura, according to the cultural theory, we would expect those municipalities with the most French-Catholic immigration to be most in favor of joining Jura. To calculate increases in that group's population size in each municipality, we subtracted census data from 2000 from 1970 census data (BFS, 1970, 2000).

To investigate the (economic) rationalist approach to secession, we examine pocketbook and social class issues. If people prefer to pay lower taxes and regard pocketbook issues as an important basis for their political decisions, then this should also be reflected in the 2013 referendum. To test this hypothesis, we rely on the local tax coefficients using the Government of Berne's financial report (Finanzverwaltung des Kantons Bern, 2013). The local tax coefficient measures how much citizens in each municipality pay in addition to cantonal and federal taxes. Because local governments can autonomously decide on their tax coefficient, and because they are in competition with one another, coefficients are in principle set as low as possible. But only those municipalities that can afford to do so will have a low coefficient. Local tax coefficients are thus a measure of local wealth: the higher the tax coefficient, the poorer the local government. If this logic is accurate, we would expect that municipalities with higher tax coefficients should be more in favor of unification. Horowitz (1981, 1985) has shown that poorer regions are early and frequent secessionists, whereas advanced regions are late and rare secessionists. By contrast, Ayres and Saideman (2000) fails to find any relationship between economic differentials and secession. Sorens (2012) claims that the relationship depends on regime type – 'in democracies, economically better off regions are more secessionist ... in autocracies, this relationship could be weaker or non-existent'. However, as all the communes under investigation here are part of the same democratic polity, that last point can be ignored, for the moment.

To test the idea that subordinate social status will produce political salience of that cultural marker – and thereby shape the vote – we create a class variable for each of the four cultural groups (French-Catholics, French-Protestants, German-Catholics, and German-Protestants). We use Oesch's (2006) classification (cf. Oesch and Rennwald, 2010), which combines educational attainment, employment (ISCO codes), and employment status. The variable is then collapsed into three categories: upper (including Oesch's large employers, self-employed professionals, technical experts, higher-grade managers and administrators, and sociocultural professionals), middle (*petite bourgeoisie* with and without employees, technicians, skilled crafts, associate managers and administrators, skilled office, sociocultural semi-professionals, and skilled service), and lower class (routine operatives, routine agriculture, routine office, and routine service). Classes are calculated on the basis of the 2000 census data. We then subtract the value for French-Catholics from that of German-Protestants in each municipality. Class-based arguments imply that municipalities where French-Catholics are subordinate to German-Protestants should express a greater desire to join Jura.

Finally, scholars have long emphasized how spatial factors, especially distance between peoples, shape network structures, identities, and preferences (Rokkan and Urwin, 1983; Jenkins, 1986; Lipset and Rokkan, 1990 [1967]; Rutherford *et al.*, 2014), and this is also true in the case of Jura; indeed, it was the focus of the first systematic study of the Jurassien question (Jenkins, 1986). To measure distance, we calculated travel distance to Delémont (the capital of Jura) by car in minutes using Google Maps (2014). The variable was then recoded (46, the maximum, minus travel time) so that higher values denote proximity to Delémont. As mentioned above, the point of this variable is to capture the potential for communication as a facilitator for common ideas, norms, and preferences – and all of that with regard to the political capital of Jura Canton, the future 'core' if Jura Bernois had seceded.⁷

Turning to the measurement of the indicators implied by our own theory, we emphasize how cultural identities (language and religion) shape political preferences, particularly in the domain of statism. To measure statist preferences, we use two indicators. The first is a measure of voting for left-wing parties in the last cantonal elections at local level (30 March 2014). Both the Social-Democrats (PS) and the Parti Socialiste Autonome were classified as left-wing parties.⁸ Our second indicator of statist preferences is the share of people having voted in favor of gun control in the 13 February 2011 federal referendum. The popular initiative on which people voted that day, if approved, would have forbidden Swiss army members (technically, all Swiss men above 18 years) to store their personal weapon

⁷ Our results do not change substantially if we use distance from Biel, capital of the Lake district of Canton Bern, instead (results available on request), or the shortest distance to the border of Jura.

⁸ Cf. http://www.sta.be.ch/sta/de/index/wahlen-abstimmungen/wahlen-abstimmungen/wahlen/wahlen_2014.html

at home when not in service (BFS, 2011).⁹ The right to bear arms is probably as sacred in Switzerland as it is in the United States, and thus a referendum on this issue is a good proxy for individual preferences for a larger or smaller role for government more generally [cf. Bühlmann and Caroni (2013) for a similar approach]. These political preferences, together with ecological factors, shaped the decision to secede. If true, then we should see municipalities in Jura Bernois having more statist preferences and those closer to the center of Jura being more in favor of seceding from Berne.¹⁰

We adopt a seemingly unrelated regression (SUR) approach because it captures our two-stage theoretical argument (Figure 1) better than a single-equation model.¹¹ SUR is a two-stage generalization of the general linear regression model (Zellner, 1962; Zellner and Ando, 2010). The first stage in an SUR is an ordinary least square (OLS) regression, the second uses the residuals from the first to estimate the elements of the matrix, Σ , via (feasible) generalized least squares regression, and the error terms are assumed to be correlated across the equations (Amemiya, 1985: 198).

In the first stage, we predict political preferences as a function of cultural factors (language and religion), and in the second we predict the vote on secession as a function of political and ecological factors. The model can be written down in matrix form as follows (Zellner and Ando, 2010): $y = X\beta + u$, $u \sim N(0, \Omega \otimes I)$, where $N(\mu, \Sigma)$ denotes the normal distribution with mean μ and covariance matrix Σ , \otimes the tensor product, Ω an $m \times m$ symmetric matrix with diagonal elements $\{\omega_1^2, \dots, \omega_m^2\}$, and the off-diagonal ij th elements are ω_{ij} , $y' = (y'_1, \dots, y'_m)$, $X = \text{diag}\{X_1, \dots, X_m\}$, $\beta' = (\beta'_1, \dots, \beta'_m)$, and $u' = (u'_1, \dots, u'_m)$. Under the assumption of symmetric error distributions, the estimator produces unbiased coefficients and standard errors in small samples.

Table 1 presents our main results. The first equation predicts political preferences on the basis of cultural factors, the second uses those political preferences, along with ecological factors, to predict the secession vote. Across all four model specifications, the results indicate that cultural factors (religion and language) help account for variation in political preferences over statism. These effects are strong and consistent across the models, and show that municipalities with more Catholics and French-speakers were much more likely than municipalities with fewer Catholics and French-speakers to vote for leftist parties promoting more statism.

In the Jura vote equation, we find that these political preferences for statism (both in the form of left-wing voting and the referendum vote over gun control) are highly predictive. Those municipalities that voted more for leftist parties and more for gun control were much more likely to vote to secede from Berne and join Jura. Ecological effects were also important – municipalities closer to Delémont

⁹ Cf. <http://www.admin.ch/ch/d/pore/va/20110213/index.html>

¹⁰ As individual votes are unavailable, and we would not wish to commit an ecological fallacy, our analysis and inferences are cast at the municipal level throughout.

¹¹ However, the results of the OLS regressions are reported in Table A2 in the Appendix.

Table 1. Seemingly unrelated regression (SUR) results of the cross-sectional analysis (Jura Bernois)

Independent variables	Model 1	Model 2	Model 3	Model 4
	<i>B</i> (SE)	<i>B</i> (SE)	<i>B</i> (SE)	<i>B</i> (SE)
Jura vote equation				
% Left-wing voters	0.62 (0.12)***	0.63 (0.12)***	0.41 (0.36)	0.62 (0.12)***
% Pro-gun control	0.34 (0.10)***	0.33 (0.10)***	0.32 (0.10)***	0.38 (0.23)*
Proximity to Delémont	0.48 (0.08)***	0.48 (0.08)***	0.27 (0.36)	0.55 (0.32)*
Left × proximity			0.01 (0.01)	
Guns × proximity				-0.00 (0.00)
Age	-0.66 (0.48)	-0.68 (0.48)	-0.64 (0.48)	-0.65 (0.48)
Tax coefficient	-2.93 (5.23)	-2.93 (5.23)	-2.83 (5.21)	-2.67 (5.32)
CDL	1.87 (2.26)	1.87 (2.26)	1.38 (2.39)	1.91 (2.26)
<i>N</i>	49	49	49	49
AIC	664.31	669.85	665.96	666.30
BIC	688.90	692.55	692.44	692.79
<i>R</i> ²	0.68	0.68	0.69	0.68
RMSE	5.99	5.99	5.96	5.98
Left vote equation				
% Catholics	0.18 (0.09)*		0.280 (0.109)**	0.18 (0.10)*
% French-speakers	0.20 (0.06)***		0.156 (0.074)**	0.20 (0.06)***
% French-Catholic		0.32 (0.11)***		
Age	1.43 (0.48)**	1.78 (0.49)**	1.071 (0.522)**	1.43 (0.48)***
Tax coefficient	-1.58 (5.94)	-1.10 (6.33)	-2.77 (6.36)	-1.58 (5.94)
CDL	-0.52 (2.66)	1.72 (2.60)	-1.111 (4.255)	-0.51 (2.66)
<i>N</i>	49	49	49	49
AIC	664.31	669.85	665.96	666.30
BIC	688.90	692.55	692.44	692.79
<i>R</i> ²	0.55	0.47	0.55	0.55
RMSE	6.61	7.15	6.61	6.61

CDL = cultural division of labor; AIC = Akaike information criterion; BIC = Bayesian information criterion; RMSE = root mean square error.

SUR regressions; β coefficients with SEs in brackets.

* $P < 0.1$, ** $P < 0.05$, *** $P < 0.01$.

(the capital of Jura) expressed a much stronger desire to secede. This effect appears to be both additive and interactive. In models 1 and 2, we find evidence for an additive effect of proximity above and beyond the effect of political preferences. In models 3 and 4, we investigate an interactive effect, and find evidence for an interaction between proximity and left voting, but not for an interaction between proximity and gun control. In sum, models 1 and 2 and models 3 and 4 provide evidence for a significant joint effect on the decision to secede.

All of these models also provide reasonably tight fits to the data. R^2 numbers for the Jura vote equation all hover around 70% of the variance explained, and the figures for the first equation predicting the left vote reach a high of 55% (models 1, 3 and 4) and have a low of 47% (model 2). While Table 1 and Table A2 represent

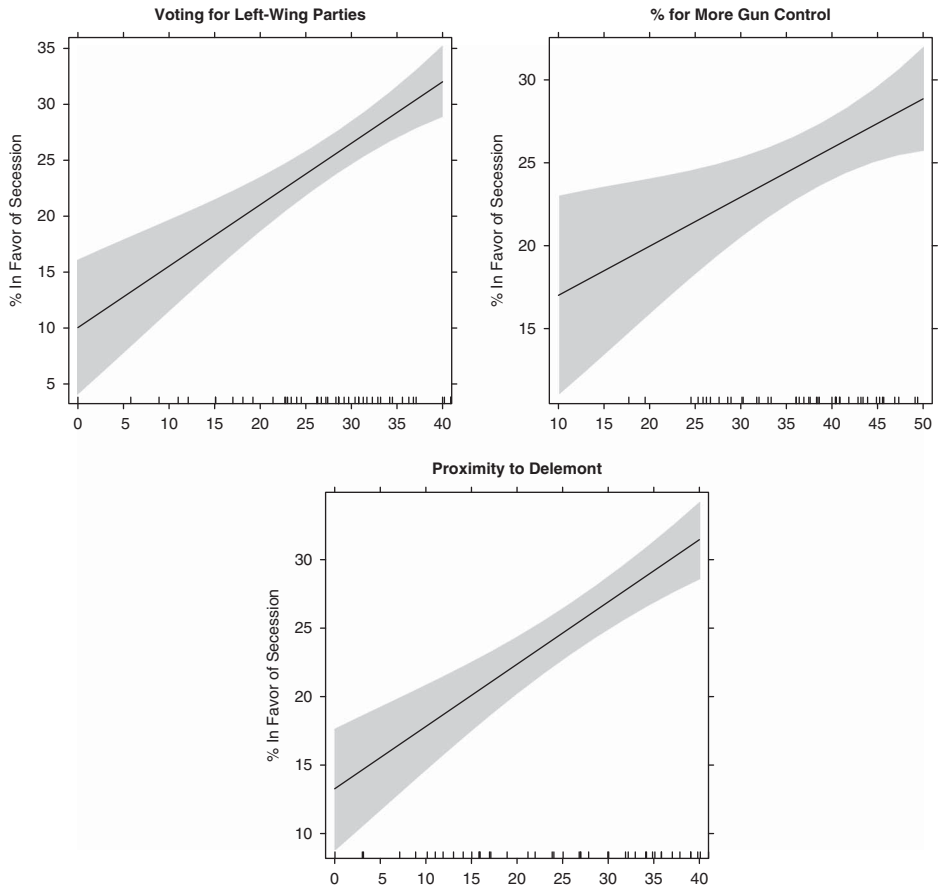


Figure 4 Marginal effects of left-wing voting (top), gun control voting, and proximity. The y-axis depicts the proportion of voters in favor of secession. The x-axis in the top left graph depicts the proportion of the population that voted for left-wing parties. The x-axis in the top right graph depicts the proportion of the population that voted in favor of more state control over guns. The x-axis in the bottom graph depicts the proximity to Delémont for each municipality.

different approaches to estimating the parameters implied in the conceptual model, both methods bring us to a similar conclusion about the role of cultural, political, and ecological factors in shaping the decision to secede in Jura.

Figure 4 displays the marginal effects of these statist preferences, along with proximity, on the yes-vote. To get a sense of the range (Figure 2), recall that the minimum level of support for secession was 2% (Seehof), the maximum 55% (Moutier), and the average was 25% (La Neuveville). An increase in the proportion in favor of more state control over guns from 10 to 50% can be expected to increase the yes-vote from 17 to 30%, whereas an increase in the strength of left-wing parties from 0 to 40% leads to an increase in the yes-vote from about

10 to 32%. An increase in proximity to Delémont of 40 minutes is associated with an increase in the yes-vote from about 17%.

To conclude, at least in Jura Bernois, the vote seems to have been about which alien ruler was preferable based on statist political preferences: a linguistically identical but religiously alien one (Jura Canton) or a religiously similar but linguistically alien one (Berne Canton). The citizens of Jura Bernois overwhelmingly voted to remain in Berne and not to join Jura. Why did Jura Bernois choose not to secede? We suggest that it was not because of religious homophily with Berne, nor because of purely pocketbook cost-benefit calculations, but because Berne offered better conditions for the realization of Jura Bernois' *political* preferences – in this case, less statism.

What implications do these results have for cultural, rationalist, and structuralist accounts of separatism? This story of (non)secession, like many others around the world, has important elements of both *the politics of identity* and *the politics of interest*. Whereas a basic model with cultural variables alone (model 1 in Table A2) shows that municipalities with more French-speakers and more Catholics were significantly more likely to vote to secede, that model only explains 47% of the variance. Similarly, a straightforward rationalist model provides for about 28% of the explained variance, and a simple ecological model (not reported) explains 19% of the variance on its own. Our model, which shows that ecological factors and political preferences mattered for how people voted on secession, explains 67% of the observed variance – about 20% more than the next best model.

To investigate a further implication of our theory, we examine the extent to which the effect of political preferences mediates the influence of cultural identities. We conducted four Sobel tests (1982) to quantify the possible mediation effects – that is, the extent to which the cultural effects of religion and language are mediated by our hypothesized mechanisms through statist preferences. Our results indicate that the strength of left-wing parties mediates a full 72% of the effect of language and 47% of the effect of religion on the vote. These very large mediation effects lend strong support to the notion that the effect of cultural identities is transmitted through political preferences over statism. The mediation effect of our second indicator of statist preferences – gun control – has a weaker effect: preferences for gun control mediate only 5% of the effect of language and 13% of the effect of religion on the vote. This could be because gun control merely captures one aspect of statism, namely a security vs. trust trade-off, whereas left-wing parties stand for a whole range of economic and progressive forms of statism – child care, tax breaks for the poor, education, infrastructure investments, environment, unemployment benefits, health care, and culture.

Finally, our results also indicate that geography matters. Proximity to the capital of Jura (Delémont) is statistically significant in all of the estimated models, which underpins the importance of ecology in this decision. But rather than regarding distance as a supporting factor of secession in itself, we think this result is best interpreted as a factor that enhances or undercuts the effect of political preferences. We now conclude by summarizing our findings and drawing more general implications.

Conclusion

This study has highlighted the advantages of combining cultural, rational, and structural accounts of secession. It shows that each alone provides a less persuasive account than the alternative advanced here, and the empirical evidence bears this out. Specifically, in our case, Catholicism and French language confer distinct political preferences for more statism, which strongly predicted the yes-vote on the secession of Jura Bernois from Berne Canton. Adding ecological factors to this model improved it further. The 2013 referendum was less about identity as such, or about classic pocketbook issues, and more about whether Berne or Jura would be better able to satisfy Jura Bernois' preference for less statism. On the evidence of the vote, Berne was preferred by 72% of voters.

What have we learned that is of general interest to scholars of secession? First, far from being mutually exclusive, cultural, rational, and structural logics can go hand in hand. Indeed, they need one another because culture can explain the *origins* of political preferences, through distinct cultural legacies, and structural factors *constrain* the effects of political preferences on collective action and decision-making, while rational choice can explain what people *choose* on the basis of those preferences. All else equal, people prefer to be ruled by their own kind, and if that is not possible they will choose the less alien of two alien rulers.

Second, the factors responsible for the political salience of different identities in multicultural societies may hinge on how these identities shape distinct political preferences for either more or less statism. That political preferences about statism trump cultural identity *per se* is a far cry from conventional expectations about the durability and salience of religious and linguistic distinctions in the literature on secession. In our case, identity only matters for secession via the specific political preferences that it entails.

Last, ecology matters in helping to reinforce or undercut distinct preferences among distinct cultural groups. Certain topographies facilitate contact with certain groups while obstructing relations with others. Thus, territory matters symbolically, by creating symbols of identification ('our land' – note that the flag of Jura Canton features seven stripes in memory of the seven districts of the former archbishopric, three of which form today's Jura Bernois), as well as practically, by exposing people to the same news outlets whose circulation (newspapers) or reach (radio, TV) is necessarily limited; offering jobs within reasonable commuting times; and by creating 'trust and codes of conduct, and shared organisational and technological cultures for collaboration and knowledge exchange' (Lundquist and Tripl, 2013: 53).

If we try to generalize from this case, that Quebec is a French-speaking island in a sea of English-speakers certainly helped its claim for full independence – the referenda in 1980 and 1995 both failed, even if the second time the 'no' vote won by <1%. Given Quebec's unique linguistic and religious legacies, overwhelmingly Francophone and Roman Catholic, a legacy of colonial settlement policies, a new

referendum on the independence of Quebec may be merely a matter of time. Similar considerations on the actual content and level of public service delivery, and not so much the ethnic underpinning of the polity itself, have played a role in Scotland. However, as external and internal referenda are not completely comparable, our findings must await validation in a high-stakes external secession referendum.

In conclusion, secession and referenda on secession are on the rise in Europe. The case of Jura Bernois has highlighted many of the same issues that arise in other cases of secession, namely group identity, political preferences over the role of the state and geography, and the excellent empirical evidence in this study has enabled us to test rival explanations of secession in a way that is rarely possible. Nevertheless, assessing the external validity of the proposed theoretical model remains an important task for future research.

Acknowledgments

This research was funded by a grant from the Institute for Social Science Research at Arizona State University. The authors thank the Swiss Federal Office of Justice and the Swiss Statistical Office for giving them access to census data for 1970, 1980, 1990, and 2000. The authors also thank all the participants of research workshops and conferences held in Berne, the Annual Meeting of the American Political Science Association in Washington, DC, a conference on ‘Self-Determination in Europe’ at the University of Berne, a workshop on ‘Ethnicity and Religion’, held at Arizona State University, the Annual Meeting of the Western Political Science Association, the Council for European Studies in Paris, the Association for the Study of Religion, Economics, and Culture at Chapman University, and the Southwest Mixed Methods Workshop at the University of New Mexico. The authors would like to thank Liam Anderson, Marissa Brookes, Rogers Brubaker, Joann Buehler, Lenka Bustikova, Miguel Carreras, Lars-Erik Cederman, Bridget Coggins, Kathleen Gallagher Cunningham, Jennifer Cyr, Lauren Duquette, Valery Dzutsati, Maureen Eger, Zachary Elkins, Tanisha Fazal, Béla Filep, Alain Gagnon, Anthony Gill, Sara Goodman, Ryan Griffiths, Chris Hale, John R. Hall, Eve Hepburn, Christine Horne, Mala Htun, Laurence Iannaccone, Jordan Kiper, Milli Lake, André Lecours, Julie Lucero, Devorah Manekin, John McCauley, Sara Niedzwiecki, Jami Nunez, Steven Pfaff, Philip Roeder, Aviel Roshwald, Andreas Schädel, Sarah Shair-Rosenfeld, Jared Rubin, Maria Saffon, Jason Seawright, Jason Sorens, Carli Steelman, Jody Vallejo, Mark von Hagan, and Carolyn M. Warner. For their hospitality and extensive discussions in Switzerland, the authors are grateful to Manfred Bühler, Marc Bühlmann, Emanuel Gogniat, Jean-Pierre Graber, Fabien Greub, Jean-Claude Rennwald, Daniel Rieder, and Maxime Zuber.

References

- Alesina, A. and E. La Ferrara (2000), ‘Participation in heterogeneous communities’. Working paper No. 7155, National Bureau of Economic Research, Cambridge, MA.
- Almond, G.A. and S. Verba (1965), *The Civic Culture*, Boston, MA: Little, Brown and Company.

- Amemiya, T. (1985), *Advanced Econometrics*, Cambridge, MA: Harvard University Press.
- Armingeon, K., F. Bertozzi and G. Bonoli (2004), 'Swiss worlds of welfare', *West European Politics* 27(1): 20–44.
- Ayres, R.W. (2000), 'Is separatism as contagious as the common cold or as cancer? Testing international and domestic explanations', *Nationalism and Ethnic Politics* 6(3): 91–113.
- Bieber, F. (2006), *Post-War Bosnia: Ethnicity, Inequality and Public Sector Governance*, New York, NY: Palgrave Macmillan.
- Bolton, P. and G. Roland (1997), 'The breakup of nations: a political economy analysis', *The Quarterly Journal of Economics* 112(4): 1057–1090.
- Bookman, M. (1992), 'Economic issues underlying secession: the cases of Slovenia and Slovakia', *Communist Economies and Economic Transformation* 4(1): 111–134.
- Bourdieu, P. (1977), *Outline of a Theory of Practice*, Cambridge, NY: Cambridge University Press.
- Brubaker, R. (2013), 'Language, religion and the politics of difference', *Nations and Nationalism* 19(1): 1–20.
- Buchanan, J. and R. Faith (1987), 'Secession and the limits of taxation: toward a theory of internal exit', *The American Economic Review* 77(5): 1023–1031.
- Bühlmann, M. and F. Caroni (2013), *Similis Simili Gaudet. Die politische Kultur des Berner Juras im Vergleich mit dem Kanton Jura und dem Kanton Berne*, Berne: Année Politique Suisse/University of Berne.
- Bundesamt für Statistik [Federal Statistical Office] (BFS) (1970, 2000, 2011, and 2015). Retrieved 1 May 2015 from <http://www.bfs.admin.ch>.
- Burnham, T.D. (1967), *Logic: A Modern Introduction to Deductive Reasoning*, New York, NY: Holt, Rinehart and Winston.
- Bustikova, L. and C. Corduneanu-Huci (2015), 'Clientelism, trust and historical state capacity'. Unpublished manuscript.
- Castles, F.G. (1994), 'On religion and public policy: does Catholicism make a difference?', *European Journal of Political Research* 25(1): 19–40.
- Cederman, L.-E., K.S. Gleditsch and H. Buhaug (2013), *Inequality, Grievances, and Civil War*, Cambridge: Cambridge University Press.
- Charron, N. and V. Lapunte (2013), 'Why do some regions in Europe have a higher quality of government', *The Journal of Politics* 75(3): 567–582.
- Collier, P. and A. Hoeffler (2002), 'The political economy of secession'. World Bank Development Research Group, Retrieved 25 May 2014 from <http://users.ox.ac.uk/~ball0144/self-det.pdf>.
- Connor, W. (1994), *Ethnonationalism: The Quest for Understanding*, Princeton, NJ: Princeton University Press.
- Coppieters, B. and M. Huysseune (eds) (2002), *Secession, History and the Social Sciences*, Brussels: VUB Brussels University Press.
- Cox, K.R. (2002), *Political Geography: Territory, State, and Society*, Oxford: Blackwell Publishers.
- Crevoisier, C. (ed.) (2012), *Atlas historique du Jura*, Porrentruy: Société jurassienne d'Emulation/Cercle d'études historiques.
- Darden, K. and A. Gryzmala-Busse (2006), 'The great divide: literacy, nationalism, and the communist collapse', *World Politics* 59(1): 83–115.
- Davis, N.J. and R.V. Robinson (2012), *Claiming Society for God: Religious Movements and Social Welfare in Egypt, Israel, Italy, and the United States*, Bloomington, IN: Indiana University Press.
- Deschouwer, K. (2009), *The Politics of Belgium*, Basingstoke: Palgrave Macmillan.
- Dion, S. (1996), 'Why is secession difficult in well-established democracies? Lessons from Quebec', *British Journal of Political Science* 26(2): 269–283.
- Durkheim, E. (1951), *Suicide: A Study in Sociology*, (translated by J.A. Spaulding & G. Simpson) New York, NY: The Free Press of Glencoe.
- Finanzverwaltung des Kantons Bern (2013), *Steueranlagen der Gemeinden und Steuersätze der Kirchgemeinden für 2013*, Bern: Finanzverwaltung des Kantons Bern.
- Fossati, F. and S. Häusermann (2014), 'Social policy preferences and party choice in the 2011 Swiss elections', *Swiss Political Science Review* 20(4): 590–611.
- Ganguillet, G. (1998), *Le conflit jurassien: Genèse et trajectoire d'un conflit ethno-régional*, Zurich: Bokus Druck.

- Gilliland, A. (2012), 'Secession within federations', in Europäisches Zentrum für Föderalismus-Forschung Tübingen (ed.), *Jahrbuch des Föderalismus*, Baden-Baden: Nomos, pp. 39–49.
- Goldberg, A. (2014), 'The impact of religion on voting behaviour – a multilevel approach for Switzerland', *Swiss Political Science Review* 20(2): 305–329.
- Google Maps (2014), various distance calculations. Retrieved 1 December 2014 from <https://maps.google.com>.
- Hechter, M. (1978), 'Group formation and the cultural division of labor', *American Journal of Sociology* 84(2): 293–318.
- (2000), *Containing Nationalism*, Oxford University Press.
- (2004), 'From class to culture', *American Journal of Sociology* 110(2): 400–445.
- (2013), *Alien Rule*, New York, NY: Cambridge University Press.
- Horowitz, D. (1981), 'Patterns of ethnic separatism', *Comparative Studies in Society and History* 23(2): 165–195.
- (1985), *Ethnic Groups in Conflict*, Berkeley, CA: University of California Press.
- Jenkins, J.R.G. (1986), *Jura Separatism in Switzerland*, Oxford: Oxford University Press.
- Jordan, J. (2014), 'Religious belief, religious denomination, and preferences for redistribution: a comparison across 13 countries', *West European Politics* 37(1): 19–41.
- Katznelson, I. and B. Weingast (2005), *Preferences and Institutions: Points of Intersection Between Historical and Rational Choice Institutionalism*, New York, NY: Russell Sage Foundation.
- Kitschelt, H., Z. Mansfeldova, R. Markowski and G. Toka (1999), *Post-Communist Party Systems: Competition, Representation, and Inter-Party Cooperation*, New York: Cambridge University Press.
- Kopstein, J.S. and J. Wittenberg (2011), 'Deadly communities: local political milieus and the persecution of Jews in occupied Poland', *Comparative Political Studies* 44(3): 259–283.
- Laponce, J. (2012), 'Language and sovereignty referendums: the convergence effect', *Nationalism and Ethnic Politics* 18(1): 113–128.
- Lijphart, A. (1971), 'Comparative politics and the comparative method', *American Political Science Review* 65(3): 682–693.
- Linder, W., R. Zürcher and C. Bolliger (2008), *Gespaltene Schweiz – geeinte Schweiz. Gesellschaftliche Spaltungen und Konkordanz bei den Volksabstimmungen seit 1874*, Baden: hier + jetzt.
- Lindsey, D. (2012), 'The world from Berlin: Bavaria mulls an end to solidarity'. Der Spiegel International, July 18. Retrieved 1 September 2014 from <http://www.spiegel.de/international/germany/press-review-on-bavaria-s-decision-to-sue-against-solidarity-payments-a-845088.html>.
- Lipset, S.M. and S. Rokkan ((1990) [1967]), 'Cleavage structures, party systems and voter alignments', in P. Mair (ed.), *The West European Party System*, Oxford: Oxford University Press, pp. 91–138.
- Loveman, M. (1998), 'High-risk collective action: defending human rights in Chile, Uruguay, and Argentina', *American Journal of Sociology* 104(2): 477–525.
- Lundquist, K.-J. and M. Trippel (2013), 'Distance, proximity and types of cross-border innovation systems: a conceptual analysis', *Regional Studies* 47(3): 450–460.
- McPherson, M., L. Smith-Lovin and J.M. Cook (2001), 'Birds of a feather: homophily in social networks', *Annual review of sociology* 27: 415–444.
- Mitchell, T. (1991), 'The limits of the state: beyond statist approaches and their critics', *American Political Science Review* 85(1): 75–96.
- Mueller, S. (2013), 'Conflicting cantonalisms', *L'Europe en Formation* 369: 86–102.
- Muñoz, J. and M. Guinjoan (2013), 'Accounting for internal variation in nationalist mobilization: unofficial referendums for independence in Catalonia (2009–11)', *Nations and Nationalism* 19(1): 44–67.
- Muñoz, J. and R. Tormos (2014), 'Economic expectations and support for secession in Catalonia: between causality and rationalization', *European Political Science Review* 7(2): 315–341.
- Nadeau, R., P. Martin and A. Blais (1999), 'Attitude towards risk-taking and individual choice in the Quebec referendum on sovereignty', *British Journal of Political Science* 29(3): 523–539.
- Nisbett, R.E. and D. Cohen (1996), *Culture of Honor: The Psychology of Violence in the South*, Boulder, CO: Westview Press.
- Oesch, D. (2006), *Redrawing the Class Map: Stratification and Institutions in Britain, Germany, Sweden and Switzerland*, Basingstoke: Palgrave Macmillan.
- Oesch, D. and L. Rennwald (2010), 'The class basis of Switzerland's cleavage between the New Left and the Populist Right', *Swiss Political Science Review* 16(3): 343–371.

- Peisakhin, L. (2015), 'Long shadow of the past: identity, norms, and political behavior'. PhD Dissertation, Yale University, 2012.
- Petersen, R. (2002), *Understanding Ethnic Violence*, Cambridge: Cambridge University Press.
- Pichard, A. (2004), *La question jurassienne: Avant et après la naissance du 23^e canton Suisse*, Lausanne: Presses polytechniques et universitaires romandes.
- Pop-Eleches, G. (2007), 'Historical legacies and post-communist regime change', *The Journal of Politics* 69(4): 908–926.
- Pop-Eleches, G. and J. Tucker (2011), 'Communism's shadow: historical legacies, and political values and behavior'. Unpublished manuscript.
- Posner, D. (2004), 'The political salience of cultural difference: why Chewas and Tumbukas are allies in Zambia and adversaries in Malawi', *American Political Science Review* 98(4): 529–545.
- Qvortrup, M. (2014), *Referendums and Ethnic Conflict*, Philadelphia, PA: University of Pennsylvania Press.
- Rapp, C., R. Traunmüller, M. Freitag and A. Vatter (2014), 'Moral politics: the religious factor in referenda voting', *Politics and Religion* 7(2): 418–443.
- Rennwald, J.-C. (1995), *Nord-Sud, le Partage: Ce qui pourrait être un Canton de Jura à 6 districts*, Courrendlin: Communication Jurassienne et Européenne.
- Richter, D. (2005), *Sprachenordnung und Minderheitenschutz im schweizerischen Bundesstaat. Relativität des Sprachenrechts und Sicherung des Sprachenfriedens*, Heidelberg: Springer.
- Roccas, S. and B. Brewer Marilynn (2002), 'Social identity complexity', *Personality and Social Psychology Review* 6(29): 88–106.
- Rokkan, S. and D. Urwin (1983), *Economy, Territory, Identity. Politics of West European Peripheries*, London, Beverly Hills, CA, New Delhi: Sage Publications.
- Rutherford, A., D. Harmon, J. Werfel, A.S. Gard-Murray, S. Bar-Yam, A. Gros, R. Xulvi-Brunet and Y. Bar-Yam (2014), 'Good fences: the importance of setting boundaries for peaceful coexistence', *PLoS ONE* 9(5): e95660.
- Sambanis, N. and B. Milanovic (2014), 'Explaining regional autonomy differences in decentralized countries', *Comparative Political Studies* 47(13): 1830–1855.
- Schumacher, J.-J. (2005), *L'assemblée interjurassienne: Histoire et perspectives*, Porrentruy: Société jurassienne d'Emulation.
- Shefter, M. (1977), 'Party and patronage: Germany, England, and Italy', *Politics and Society* 7(4): 403–451.
- (1994), *Political Parties and the State. The American Historical Experience*, Princeton, NJ: Princeton University Press.
- Simeon, R. (2009), 'Constitutional design and change in federal systems', *The Journal of Federalism* 39(2): 241–261.
- Simmel, G. (1955), *Conflict and the Web of Group Affiliations*, New York, NY: Free Press.
- Simpson, B., M. Brashears, E. Gladstone and A. Harrell (2014), 'Birds of different feathers cooperate together: no evidence for altruism homophily in networks', *Sociological Science* 1: 542–564.
- Slezkin, Y. (1994), 'The USSR as a communal apartment, or how a socialist state promoted ethnic particularism', *Slavic Review* 53(2): 414–452.
- Smith, A. (1986), *The Ethnic Origins of Nations*, Oxford: Basil Blackwell.
- Snyder, R. (2001), 'Scaling down: the subnational comparative method', *Studies in Comparative International Development* 36(1): 93–110.
- Sobel, M. (1982), 'Asymptotic confidence intervals for indirect effects in structural equations models', in S. Leinhardt (ed.) *Sociological Methodology*, San Francisco, CA: Jossey-Bass, pp. 290–312.
- Sorens, J. (2012), *Secessionism: Identity, Interest, Strategy*, Montréal, Kingston, London, Ithaca, NY: McGill-Queen's University Press.
- Steinmo, S. (2008), 'Historical institutionalism', in D. Della Porta and M. Keating (eds), *Approaches and Methodologies in the Social Sciences*, Cambridge: Cambridge University Press, pp. 118–138.
- Steinmo, S., K. Thelen and F. Longstreth (eds) (1992), *Structuring Politics: Historical Institutionalism in Comparative Politics.*, Cambridge: Cambridge University Press.

- Talhelm, T., X. Zhang, S. Oishi, C. Shimin, D. Duan, X. Lan and S. Kitayama (2014), 'Large-scale psychological differences within China explained by rice versus wheat agriculture', *Science* **344** (6184): 603–608.
- Toft, M.D. (2012), 'Self-determination, secession, and civil war', *Terrorism and Political Violence* **24**(4): 581–600.
- Vatter, A. (2014), 'Kantone', in P. Knoepfel, Y. Papadopoulos, P. Sciarini, A. Vatter and S. Häusermann (eds), *Handbuch der Schweizer Politik/Manuel de la politique suisse*, Zürich: Verlag NZZ, pp. 245–274.
- Wimmer, A. (2002), *Nationalist Exclusion and Ethnic Conflict: Shadows of Modernity*, Cambridge: Cambridge University Press.
- Wittenberg, J. (2006), *Crucibles of Political Loyalty: Church Institutions and Electoral Continuity in Hungary*, New York: Cambridge University Press.
- (2015), 'Conceptualizing historical legacies', *East European Politics & Societies* **29**(2): 366–378.
- Wittman, D. (1991), 'Nations and states: mergers and acquisitions; dissolutions and divorce', *The American Economic Review* **81**(2): 126–129.
- Zellner, A. (1962), 'An efficient method of estimating seemingly unrelated regression equations and tests for aggregation bias', *Journal of the American Statistical Association* **57**: 348–368.
- Zellner, A. and T. Ando (2010), 'A direct Monte Carlo approach for Bayesian analysis of the seemingly unrelated regression model', *Journal of Econometrics* **159**(1): 33–45.

Appendix

Table A1. Variable descriptions

Variables	Description	N	Minimum	Maximum	Mean	SD
% In favor of joining Jura	Share of pro-JU voters in November 2013 referendum	49	2.44	55.36	25.16	10.73
% Catholics	Share of Catholics in 2000	49	3.70	58.99	25.83	11.39
% French-speakers	Share of French-speakers in 2000	49	8.86	95.65	79.58	20.56
% French-Catholic	Share of French-speaking Catholics (2000)	49	0.00	54.50	20.50	10.85
% Left-wing voters	Share of left-wing parties at 2014 cantonal elections (PS + PSA) ^a	49	0.00	44.70	27.54	9.96
% Pro-gun control	% yes to the weapons' control initiative (February 2011)	49	6.90	59.48	37.55	10.31
% Catholics × proximity	% Catholics times Proximity to Delémont	49	0.00	2536.57	707.23	561.61
% French-speakers × proximity	% French-speakers times Proximity to Delémont	49	0.00	4112.95	2080.64	1225.90
Left × proximity	% Left-wing voters times Proximity to Delémont	49	0.00	1801.71	719.72	487.20
Guns × proximity	% Pro-gun control times Proximity to Delémont	49	0.00	2285.88	950.84	540.60
Proximity to Delémont	Proximity to Delémont (46 – travel time by car)	49	0	46	26.16	12.48
Increase in % French-Catholics	% increase in French-speaking Catholics 1970 to 2000	49	-7.16	18.01	7.13	5.66
Age	Mean age of LG (2000)	49	30.84	42.87	39.26	2.43
Tax coefficient	Local tax rate in 2013	49	1.50	2.28	1.90	0.17
CDL	Cultural division of labor, measured as the average difference in class (mean of German-Protestants minus mean of French-Catholics) ^b	49	-2.10	0.28	-0.31	0.45

^aValues for the municipalities that have merged on 1 January 2014 have been imputed from the merged commune.

^bAs there were no French-speaking Catholics in Seehof and Schelten in 2000, we have assumed a value of 0 for them.

Table A2. Ordinary least square (OLS) results of the cross-sectional analysis (Jura Bernois)

Independent variables	Model 1		Model 2		Model 3		Model 4	
	B (SE)	VIF	B (SE)	VIF	B (SE)	VIF	B (SE)	VIF
Culturalist								
% Catholics	0.179 (0.121)	1.362					-0.058 (0.114)	1.88
% French-speakers	0.147 (0.065)**	1.294					0.035 (0.068)	2.19
% Increase in French-Catholics	0.352 (0.248)	1.412					0.238 (0.211)	1.59
Statism								
% Left-wing voters					0.550 (0.103)***	1.24	0.484 (0.138)***	2.10
% Pro-gun control					0.296 (0.103)**	1.33	0.307 (0.114)**	1.53
Ecological								
Proximity to Delémont	0.339 (0.098)***	1.064	0.451 (0.114)***	1.10	0.456 (0.077)***	1.08	0.459 (0.090)***	1.39
Rationalist								
Tax coefficient			2.20 (8.112)	1.08			-1.578 (6.127)	1.19
CDL			6.57 (3.112)	1.02			-0.201 (2.730)	1.70
R ²	0.467		0.279		0.668		0.687	
Adjusted R ²	0.419		0.230		0.645		0.624	
RMSE	8.179		9.413		6.392		6.583	
N	49		49		49		49	

VIF = variance-inflation factor; CDL = cultural division of labor; RMSE = root mean square error.

OLS regressions; β coefficients with SEs in brackets.

* $P < 0.1$, ** $P < 0.05$, *** $P < 0.01$.