

# Effect of electroconvulsive therapy on brain 5-HT<sub>2</sub> receptors in major depression

Lakshmi N. Yatham, Peter F. Liddle, Raymond W. Lam, Athanasios P. Zis, A. Jon Stoessl, Vesna Sossi, Michael J. Adam and Thomas J. Ruth

## Background

Brain serotonin<sub>2</sub> (5-hydroxytryptamine<sub>2</sub>; 5-HT<sub>2</sub>) receptors were considered potential targets for therapeutic efficacy of electroconvulsive therapy (ECT), but pre-clinical studies showed that electroconvulsive shock up-regulates 5-HT<sub>2</sub> receptors in contrast to antidepressant medications, which down-regulate brain 5-HT<sub>2</sub> receptors. Positron emission tomography (PET) studies in individuals with depression confirmed that antidepressant medications reduce brain 5-HT<sub>2</sub> receptors, but the effects of ECT on these receptors in individuals with depression are unknown.

## Aims

To determine if a course of ECT alters brain 5-HT<sub>2</sub> receptors in individuals with depression and whether such changes correlate with improvement in symptoms.

## Method

Fifteen people with major depression, refractory to antidepressant therapy and referred for a course of ECT, had an [<sup>18</sup>F]setoperone scan during baseline drug-free washout period and another after a course of ECT. We assessed

changes in brain 5-HT<sub>2</sub> receptors with ECT and their relationship to therapeutic outcome.

## Results

Widespread reduction in brain 5-HT<sub>2</sub> receptors was observed in all cortical areas with changes slightly more prominent in the right hemisphere. There was a trend for correlation between reduction in brain 5-HT<sub>2</sub> receptors in right parahippocampal gyrus, right lingual gyrus and right medial frontal gyrus, and improvement in depressive symptoms.

## Conclusions

Unlike in rodents, and similar to antidepressants, ECT reduces brain 5-HT<sub>2</sub> receptors in individuals with depression. The ability of ECT to further down-regulate brain 5-HT<sub>2</sub> receptors in antidepressant non-responsive individuals may explain its efficacy in those people with antidepressant refractory depression.

## Declaration of interest

None.

Electroconvulsive therapy (ECT) is one of the most effective treatments for depression but the mechanisms underlying its therapeutic effects are unknown. Brain serotonin<sub>2</sub> (5-hydroxytryptamine<sub>2</sub>; 5-HT<sub>2</sub>) receptors were considered potential targets; however, pre-clinical studies showed that electroconvulsive shock up-regulates brain 5-HT<sub>2</sub> receptors in rodents; which is in contrast to the effects of various antidepressant medications such as tricyclics, monoamine oxidase inhibitors, atypical antidepressants such as mianserin, and selective serotonin reuptake inhibitors (SSRIs), all of which cause down-regulation of brain 5-HT<sub>2</sub> receptors.<sup>1–4</sup> Some argue that it is this unique ability of ECT to up-regulate brain 5-HT<sub>2</sub> receptors that accounts for its superior efficacy, whereas others suggest that brain 5-HT<sub>2</sub> receptors are irrelevant to therapeutic effects of antidepressant treatments given the fact that the two most effective treatments for depression induce changes in these receptors in opposite directions. The most definitive way to resolve this controversy is to assess the effects of these treatments on brain 5-HT<sub>2</sub> receptors *in vivo* in humans, more specifically, in individuals with depression. Accordingly, taking advantage of the ability of positron emission tomography (PET) to visualise brain 5-HT<sub>2</sub> receptors in humans, three recent studies, each using an antidepressant from a different class, reported that treatment of participants with depression with a selective noradrenaline reuptake inhibitor desipramine,<sup>5</sup> an SSRI paroxetine,<sup>6</sup> or an SSRI plus 5-HT<sub>2</sub> antagonist nefazodone,<sup>7</sup> down-regulated brain 5-HT<sub>2</sub> receptors. The missing piece of the puzzle is the effects of ECT on brain 5-HT<sub>2</sub> receptors in individuals with depression. Therefore, in order to address this controversy, we used PET and [<sup>18</sup>F]setoperone to assess the effects of a course of ECT on brain 5-HT<sub>2</sub> receptors in individuals with depression who were refractory to treatment with antidepressant

medications. We chose [<sup>18</sup>F]setoperone as a ligand for quantifying brain 5-HT<sub>2</sub> receptors because of its selectivity and sensitivity for 5-HT<sub>2</sub> receptor binding in cerebral cortex<sup>8</sup> *in vivo* and for its higher (>2.5) total to non-specific binding ratio.<sup>9,10</sup>

## Method

### Participants

All participants were assessed by a structured clinical interview for DSM-IV diagnosis (SCID).<sup>11</sup> The DSM-IV<sup>12</sup> diagnosis of major depressive disorder was arrived at by the consensus of a research team based on information from an unstructured clinical interview as well as SCID. Individuals who met criteria for a major depressive disorder, refractory to previous antidepressant therapy and referred to a tertiary care mood disorders centre for ECT treatment were approached for participation in the study. The study was approved by the Clinical Research Ethics Board of the University of British Columbia. All participants provided written informed consent prior to completing any study procedures. Participants had no other Axis I diagnoses, substance or alcohol misuse within the past 6 months. All study participants had adequate trials with at least two antidepressant medications from two different classes and most of them had trials with several antidepressants and augmenting agents for the current episode. They were physically healthy and had a psychotropic medication washout period of at least 1 week prior to the baseline PET scan. The duration of washout period was determined for each individual based on the half-life of psychotropic medication they had been taking and the minimum washout period required was equivalent to at least five half-lives of the psychotropic medication. Individuals, however, were allowed to receive

benzodiazepines for night sedation. Each participant had a magnetic resonance imaging (MRI) scan to exclude cerebral pathology and for co-registration of PET images. The severity of depressive symptoms in individuals before and after treatment with ECT was quantified using Hamilton Rating Scale for Depression (HRSD).<sup>13,14</sup>

### PET scans

Each participant had two [<sup>18</sup>F]setoperone PET scans, one before the first ECT and the second within 1 week of the last ECT treatment. The [<sup>18</sup>F]setoperone was synthesised and the PET scans were performed as previously described.<sup>15</sup> The participants were positioned in the scanner to obtain most of the cerebral cortex (frontal, temporal, parietal) apart from the upper regions near the vertex and some cerebellum. After participants had a transmission scan for 10 min to correct PET images for attenuation, they were injected with 4 to 7 mCi of [<sup>18</sup>F]setoperone intravenously and following this, 15 frame emission scans were performed over 110 min as previously described.<sup>5</sup> Radioactivity in the brain was measured with a PET camera ECAT/953B (Siemens, Knoxville, Tennessee, USA) that collects 31 axial slices. The spatial resolution of PET images is about 9 × 9 × 6 mm<sup>3</sup>.

### ECT procedure

The procedure for ECT administration was similar to that described previously.<sup>16</sup> A Thymatron ECT apparatus was used to deliver electrical stimulus to individuals who had general anaesthesia induced with sodium thiopental and muscle relaxation with succinylcholine. All of them were given right unilateral ECT. Seizure threshold was estimated during the first treatment. Subsequent treatments were given at three times the seizure threshold, and further adjustments in stimulus intensity (an increase of 10–20%) were made for each ECT treatment to elicit a seizure of at least 20 s duration (measured with single strip electroencephalogram recording) and good amplitude with each treatment. Participants received ECT treatments three times a week and the number of ECT treatments for each individual was determined by the treating clinician based on clinical judgement of treatment response or non-response. The standard practice at the UBC Hospital is to give at least two more ECT treatments after remission of depression, but in those that had not shown any improvement, ECT is typically discontinued after eight ECT treatments. Each participant had a second PET scan between 3 and 7 days after the last ECT treatment.

### Image processing and data analysis

The PET images were processed as previously described using Statistical Parametric Mapping software 2 (SPM2; Wellcome Department of Cognitive Neurology, Institute of Neurology, London, [www.fil.ion.ucl.ac.uk/spm/software/spm2](http://www.fil.ion.ucl.ac.uk/spm/software/spm2)) run on Matlab 6 (Mathworks Inc., Natick, Massachusetts, USA).<sup>5</sup> Briefly, the PET scan frames 14 and 15 corresponding to the last 40 min of emission data were realigned to each other to create a mean image for baseline scan and a mean image for post-ECT scan. These two mean images were realigned to create a composite image that was then co-registered with the individuals' MRI. The PET and MRIs were then transformed into the standard coordinate frame used for templates in SPM2 using the spatial normalisation method specified in SPM2.

The SPM2 was used to determine the significance of the change in regional [<sup>18</sup>F]setoperone binding with ECT. Because non-specific binding for setoperone in cerebellum differs from that in cortex,<sup>17</sup> we used a reference region comprising all cortical grey matter voxels, excluding voxels in which there was a change (either decrease or increase) in binding significant at  $P < 0.1$ <sup>18</sup>

and the rationale for this is as follows: the ratio of concentration of ligand in a local region to that in a reference region is given by

$$C_{\text{local}} / C_{\text{reference}} = [BP_{\text{local}} + (k_5/k_6)_{\text{local}}] / [BP_{\text{reference}} + (k_5/k_6)_{\text{reference}}]$$

where  $BP$  denotes binding potential, and  $k_5$  and  $k_6$  are the rate constants for attachment to and dissociation from non-specific binding sites. If the local and reference regions are in cerebral cortex, it is reasonable to assume that  $(k_5/k_6)$  is similar in both regions. If the reference region is defined as that cortical region in which there is no change in binding between pre- and post-treatment scans and furthermore, if it is assumed that  $(k_5/k_6)$  is not affected by treatment, the change in

$$C_{\text{local}} / C_{\text{reference}} \text{ is given by } \Delta[C_{\text{local}} / C_{\text{reference}}] = f \cdot \Delta BP_{\text{local}}$$

where  $\Delta BP_{\text{local}}$  is the change in local binding potential and

$$f = 1 / [BP_{\text{reference}} + (k_5/k_6)]$$

Therefore, a change in  $(C_{\text{local}} / C_{\text{reference}})$ , while systematically underestimating  $\Delta BP_{\text{local}}$ , remains proportional to it. The reference region in which there was no change was identified by iterative exclusion of all voxels in which there was trend towards either an increase or decrease in setoperone binding during treatment, at level  $P < 0.1$  as stated earlier.<sup>18</sup>

For inclusion of voxels in the SPM analysis, grey matter threshold was set at 120% of the mean image intensity as this threshold eliminated most white matter voxels without excluding any grey matter voxels. The theory of Gaussian fields as implemented in SPM2 was applied to assess the statistical significance of cluster of contiguous voxels in which change during treatment exceeded a threshold of  $P < 0.025$ . This threshold was chosen because we predicted a widespread reduction in brain 5-HT<sub>2</sub> receptors with ECT. The Worsley's method in SPM takes into account extent within the cluster and applies correction for multiple comparisons in calculating cluster significance. The corrected cluster significance was set at  $P < 0.01$ . We also assessed the significance of change in [<sup>18</sup>F]setoperone for each voxel using the Worsley's method based on the theory of Gaussian fields<sup>19</sup> as implemented in SPM.<sup>20</sup> The SPM analysis provides corrected  $P$ -values based on family-wise error control (FWE-corr) as well as false-discovery rate. The former controls chances of any false positives in the brain, whereas the latter controls for the expected proportion of false positives among suprathreshold voxels. The false-discovery rate is more sensitive and is adaptive to the amount of signal observed in the data.<sup>21</sup>

### Computation of binding potential using Logan graphical method

Since the ratio method is susceptible to changes in ligand delivery/blood flow, we also computed the pre- and post-treatment values of the 5-HT<sub>2</sub> binding potential ( $BP_{\text{ND}}$ ) for the regions identified as yielding a significant difference in the ratio values, using the Logan graphical method.<sup>22</sup> The  $BP_{\text{ND}}$  refers to the ratio at equilibrium of specifically bound radioligand to that of non-displaceable radioligand in tissue and represents the ratio between the maximum free receptor density ( $B_{\text{max}}$ ) and the dissociation constant ( $K_d$ ). Since studies have shown<sup>23</sup> no change in  $K_d$  with treatment, it can be assumed that a change in  $BP_{\text{ND}}$  is directly related to a change in receptor density.

## Results

A total of 16 participants completed both baseline and post-ECT scans. Of these, the PET scan image for one person was corrupted

and could not be processed for analysis. So, the data for the remaining 15 people (6 male and 9 female) was analysed.

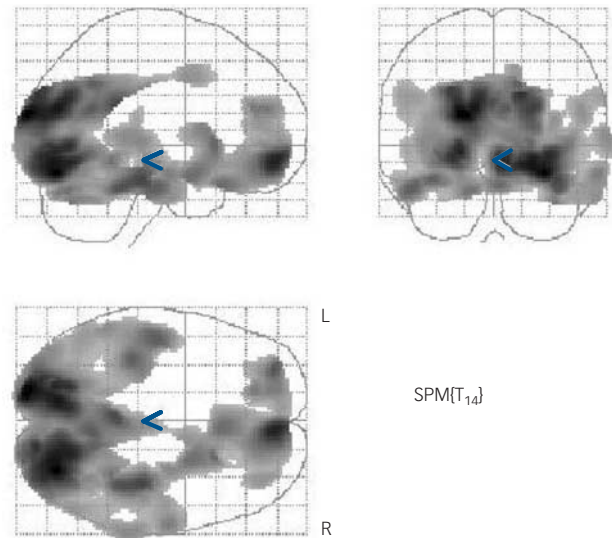
Participants had a mean age of 44.26 (s.d. = 10.4) years. The duration of current depressive episodes ranged from 12 weeks to 13 years. Only two participants had no previous depressive episodes, whereas the others had episodes ranging from two to more than ten episodes. Two participants had unremitting depressive symptoms for 10–13 years. The mean baseline HRSD score was 33.6 (s.d. = 7.71) and depressive symptoms improved significantly with a course of ECT treatment (post-ECT mean HRSD score 11.26 (s.d. = 10.2,  $t = 7.57$ , d.f. = 14,  $P < 0.0001$ ). The duration of drug-free period prior to baseline PET scan ranged from 7 to 84 days (mean 18.5, s.d. = 18.7) and the number of ECTs participants received ranged from 5 to 13 (mean 8.6, s.d. = 2.6). Ten out of 15 participants met criteria for response ( $\geq 50\%$  reduction in symptoms) and nine individuals met criteria for remission ( $\leq 12$ ) on HRSD. There were no differences in the number of ECTs received or number and duration of previous depressive episodes between responders and non-responders. Further, there was no correlation between the number of ECTs and changes in brain 5-HT<sub>2</sub> receptors.

Electroconvulsive therapy significantly reduced the [<sup>18</sup>F]setoperone binding in various cortical regions. The reduction in [<sup>18</sup>F]setoperone binding was evident in an extensive cluster of voxels ( $P = 1.3 \times 10^{-9}$ , after correction for multiple comparisons in the entire brain volume), which embraced bilateral occipital cortex, medial parietal cortex (peak in the lingual gyrus), limbic cortex (with peak in the right parahippocampal gyrus) as well as bilateral prefrontal cortex (with a peak in the right inferomedial prefrontal cortex). This cluster included 31 908 voxels (Fig. 1).

The mean change in [<sup>18</sup>F]setoperone binding in the cluster was 3.8%. The largest percentage change in signal was observed in right parahippocampal gyrus (6.7%) but because of lesser variance in the effect between participants, the most significant change observed was in left lateral occipital gyrus (5.4%). The reduction in right medial frontal gyrus was 5%.

There were many voxels in this cluster that had shown a significant reduction in [<sup>18</sup>F]setoperone binding ( $P < 0.025$ , false-discovery rate criterion) regardless of their membership in the cluster. The location and  $t$ -values for the voxels at local maxima that satisfied the false-discovery rate criterion are provided in Table 1 (see also Fig. 2).

To ascertain if changes in regional [<sup>18</sup>F]setoperone binding were related to improvement in clinical symptoms, we tested for regression coefficients within 15 mm radius spherical regions centred on the five local maxima shown in Table 1. Regression coefficients significant at the level  $P = 0.001$  (uncorrected) were observed in three (right parahippocampal gyrus, right medial prefrontal cortex and right lingual gyrus) of these five regions of interest, as shown in Table 2 and Figs 3(a)–(c). However, after



**Fig. 1** Maximum intensity projection of the significant cluster in which setoperone binding decreased between pre- and post-treatment scans.

Cluster inclusion threshold  $P < 0.025$  uncorrected; the cluster of 31 908 voxels was significant after correction for multiple comparisons;  $P = 8 \times 10^{-11}$ .

correction for multiple comparisons within the volume of interest (using the small volume correction method of Worsley *et al*)<sup>19</sup> these regression coefficients only achieved a trend level of significance ( $P \leq 0.1$ ). The results with the Logan method<sup>22</sup> confirmed that the setoperone  $BP_{ND}$  was significantly lower ( $P = 0.009$ ) following ECT in the same regions as the ratio method and that the reduction in  $BP_{ND}$  was 8.1%.

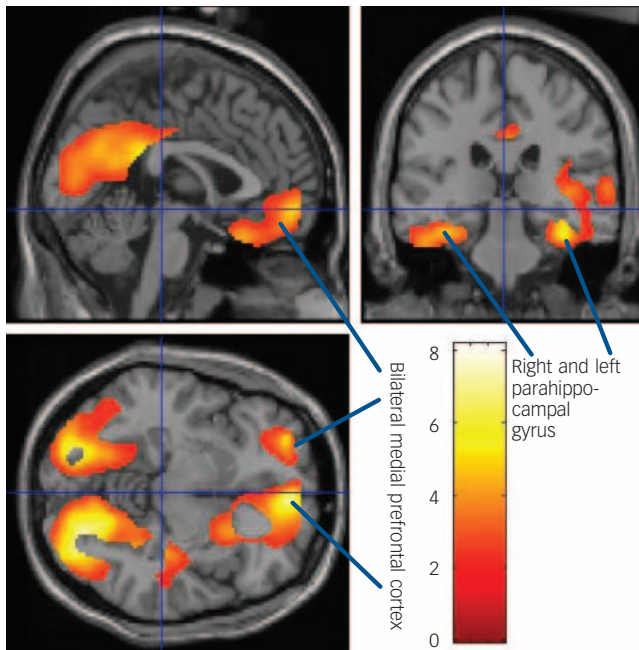
## Discussion

To our knowledge, this is the first study to examine the effects of ECT on brain 5-HT<sub>2</sub> receptors. The results showed that, in contrast to the effects of electroconvulsive shock on brain 5-HT<sub>2</sub> receptors in rodents that show up-regulation,<sup>1,24,25</sup> our findings indicate that ECT in individuals with depression, like antidepressant medications,<sup>5–7</sup> down-regulates 5-HT<sub>2</sub> receptors in several cortical regions. Species differences in 5-HT<sub>2</sub> receptor regulation might be one explanation for discrepancy in findings between rodent studies and the present study in humans. Indeed, a study in monkeys showed that electroconvulsive shock down-regulates brain 5-HT<sub>2</sub> receptors in all cortical regions,<sup>26</sup> which supports the possibility that 5-HT<sub>2</sub> receptor regulation is different in rodents and primates.

**Table 1** Brain regions that showed significant decreases in [<sup>18</sup>F]setoperone binding

Brain regions	$t$	Voxels			Coordinates <sup>a</sup>		
		Family-wise error, corrected $P$	False-discovery rate, corrected $P$		$x$	$y$	$z$
Left lateral occipital gyrus	8.17	0.011	0.002		-18	-94	18
Right lingual gyrus	8.07	0.011	0.002		30	-76	-16
Left cuneus	7.44	0.022	0.002		-12	-76	-22
Right medial frontal gyrus	7.07	0.033	0.002		6	52	-10
Right parahippocampal gyrus	5.79	0.155	0.002		38	-26	-20

a. Coordinates are in millimetres from the origin at the mid-point or anterior commissure, in the coordinate frame employed in Statistical Parametric Mapping (SPM2)



**Fig. 2** Areas of significant decreases in [<sup>18</sup>F]setoperone binding on the sagittal, coronal and transverse renderings of the brain.

Arrows indicate reductions in binding in parahippocampal gyrus and bilateral medial prefrontal cortex.

### Is 5-HT<sub>2</sub> receptor down-regulation intrinsic to mechanism of action of antidepressant treatments?

The finding that ECT and three different antidepressants with differing modes of action (desipramine – a noradrenaline reuptake inhibitor;<sup>5</sup> paroxetine – a serotonin reuptake inhibitor (SSRI);<sup>6</sup> and nefazodone – an SSRI and a 5-HT<sub>2</sub> receptor antagonist)<sup>7</sup> all down-regulate brain 5-HT<sub>2</sub> receptors, suggests that down-regulation of 5-HT<sub>2</sub> receptors is either an intrinsic feature of the mechanism of antidepressant action or is a direct consequence of antidepressant action. Furthermore, this study of ECT and all three previous studies with antidepressants<sup>5–7</sup> have reported down-regulation of 5-HT<sub>2</sub> receptors in limbic and prefrontal areas, although with paroxetine this was seen mainly in younger participants.<sup>6</sup> Limbic and frontal areas are implicated in the neurobiology of depression.<sup>27,28</sup> The possibility that down-regulation of 5-HT<sub>2</sub> receptors in limbic and frontal areas is intrinsic to the mechanism of antidepressant action is further supported by the finding of a trend towards correlation between ECT-related changes in [<sup>18</sup>F]setoperone binding in medial prefrontal cortex as well as right parahippocampal gyrus and clinical improvement in depression as measured by changes in HRSD scores.

### 5-HT<sub>2</sub> receptors and right hemisphere

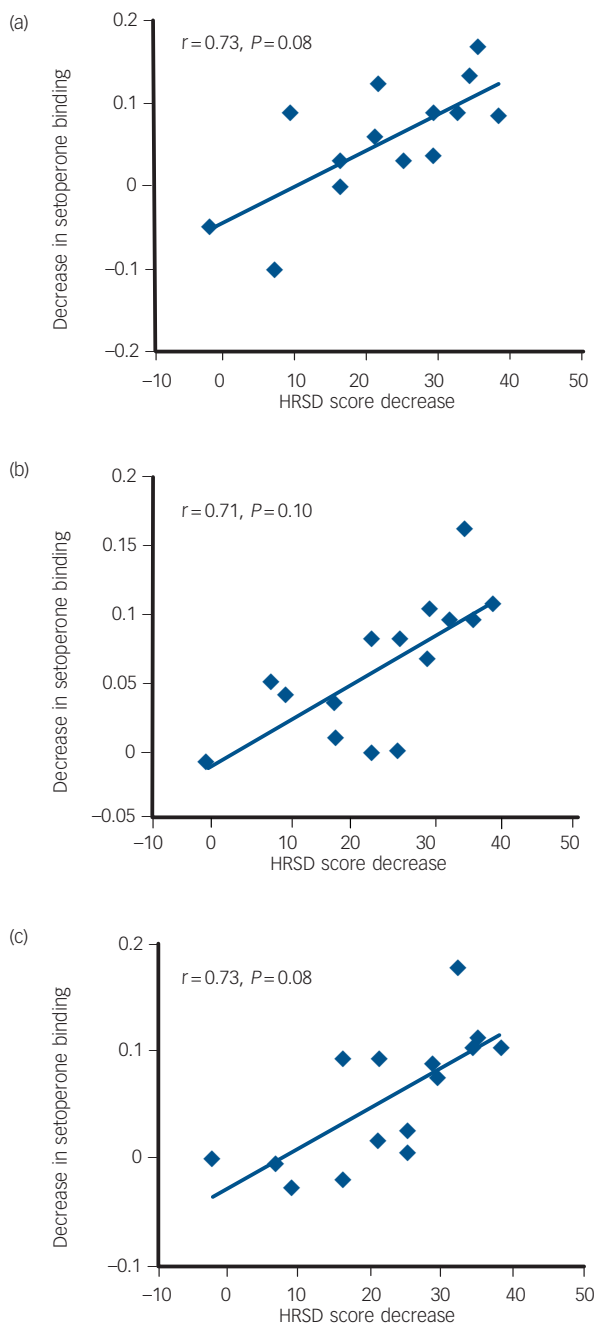
Although reduction in brain 5-HT<sub>2</sub> receptors was observed in both right and left cortical regions, changes were slightly prominent on the right side. Since all participants in this study received right unilateral ECT, it raises the possibility that slightly more prominent reduction in 5-HT<sub>2</sub> receptors in right cortical regions might be as a result of the fact that the electrical stimulus was delivered to the right brain. However, previous studies that assessed the effects of antidepressants on brain 5-HT<sub>2</sub> receptors have also observed such asymmetry with changes slightly more prominent on the right side.<sup>5,7</sup> Furthermore, some studies have also reported changes in brain 5-HT<sub>2</sub> receptors only on the right side in untreated individuals with depression.<sup>29,30</sup> Given that the density of 5-HT<sub>2</sub> receptors in human brain appears to be similar in both hemispheres,<sup>31</sup> these findings suggest that changes in brain 5-HT<sub>2</sub> receptors in the right brain might be more relevant to neurobiology of depression and therapeutic effects of treatments.

### Brain 5-HT<sub>2</sub> receptors and efficacy of ECT in refractory depression

Interestingly, the percentage reduction in brain 5-HT<sub>2</sub> receptors was only 3.8% for the entire cluster, 5% in medial frontal gyrus and 6.7% in right parahippocampal gyrus. These percentage reductions in 5-HT<sub>2</sub> receptor binding with ECT are somewhat smaller than those reported with desipramine (8–15.7%)<sup>5</sup> and paroxetine (10%).<sup>6</sup> However, it should be noted that many of the participants in this study had already received extensive treatment with antidepressants before ECT, so it is possible that the reductions related to ECT were superimposed on prior reduction associated with antidepressant medication. Furthermore, some<sup>15,32</sup> but not all<sup>33,34</sup> studies suggest that untreated individuals with major depression have up to 29% reduction in brain 5-HT<sub>2</sub> receptors compared with age- and gender-matched healthy individuals and we have previously hypothesised that such down-regulation might be a compensatory homeostatic response of the brain to the state of depression.<sup>15</sup> Thus, it is plausible that, in some individuals, natural homeostatic processes might produce sufficient reduction in brain 5-HT<sub>2</sub> receptors to alleviate depression; in others, antidepressant medication is required, whereas in treatment-refractory cases, ECT is required to produce additional reduction in 5-HT<sub>2</sub> receptor density. This hypothesis is supported by the findings of this study that showed that the antidepressant-refractory participants had further reduction in 5-HT<sub>2</sub> receptors and that there was a trend for a correlation between reduction in [<sup>18</sup>F]setoperone binding in medial prefrontal cortex as well as right parahippocampal gyrus and clinical improvement in depression with ECT. The reductions in 5-HT<sub>2</sub> receptors observed in this study in participants who were refractory to antidepressant treatment may explain not only its superior efficacy to antidepressants but also its benefit in those non-responsive to pharmacotherapy.

**Table 2** Correlations between change in Hamilton Rating Scale for Depression score and change in [<sup>18</sup>F]Setoperone binding in 15 mm radius spherical regions centred on local maxima of the change in [<sup>18</sup>F]setoperone binding during treatment (reported in Table 1)

Anatomical location	Pearson correlation coefficients	t	Small volume correction for multiple comparisons, P	Voxels			
				Uncorrected P	Coordinates		
				x	y	z	
Right lingual gyrus	0.71	3.65	0.10	0.001	22	-64	-12
Right medial prefrontal cortex	0.73	3.84	0.08	0.001	6	60	2
Right parahippocampal gyrus	0.73	3.82	0.08	0.001	36	-38	-28



**Fig. 3** Correlations between reduction in [ $^{18}\text{F}$ ]setoperone binding in brain regions and improvement in depressive symptoms as measured by the difference in Hamilton Rating Scale for Depression (HRSD) scores between baseline and post-electroconvulsive therapy treatment. (a) Right medial prefrontal cortex, (b) right lingual gyrus, (c) right parahippocampal gyrus.

### Brain 5-HT<sub>2</sub> receptors and improvement in depression

If ECT and antidepressant medications all down-regulate brain 5-HT<sub>2</sub> receptors, and if such down-regulation mediates antidepressant effects, other treatments that down-regulate 5-HT<sub>2</sub> receptors should also work as antidepressants. Indeed, atypical antipsychotics, which block and down-regulate brain 5-HT<sub>2</sub> receptors,<sup>35</sup> have recently been shown to have significant antidepressant properties in clinical trials of people with bipolar depression.<sup>36,37</sup> In contrast, conventional antipsychotics such as

haloperidol do not alter brain 5-HT<sub>2</sub> receptors<sup>38</sup> and have no significant antidepressant properties or, indeed, can induce depressive symptoms.<sup>39</sup> Furthermore, in another PET study, we have shown that, in healthy volunteers, 5-HT<sub>2</sub> receptor down-regulation is associated with lack of depressive symptoms induced by tryptophan depletion.<sup>40</sup>

### Limitations

Some limitations of our study warrant comment. First, although setoperone binds with higher affinity to 5-HT<sub>2</sub> receptors ( $K_i=0.37$  nmol/l), it has some affinity to  $\alpha_1$  adrenergic as well as dopamine D<sub>2</sub> receptors.<sup>9,10</sup> However, pre-treatment with  $\alpha_1$  antagonist prazosin or D<sub>2</sub> antagonist sulpiride did not change specific/non-specific binding ratios in humans, indicating that setoperone signal in humans is reflective of 5-HT<sub>2</sub> binding.<sup>9</sup> Setoperone also has a good specific to non-specific binding ratio in cortex and hence is considered a suitable ligand for assessing brain 5-HT<sub>2</sub> receptors in humans.<sup>9,10</sup> It is likely that setoperone binding provides an estimate of brain 5-HT<sub>2A</sub> receptors as it was fully displaced by EMD281014, a more selective 5-HT<sub>2A</sub> antagonist.<sup>41</sup> Second, since each ECT treatment was given under general anaesthesia, one could argue that the anaesthetic agent contributed to reduction in brain 5-HT<sub>2</sub> receptors observed in this study. As no study to date examined the effects of barbiturates anaesthesia on brain 5-HT<sub>2</sub> receptors, we cannot exclude this possibility. However, a previous study that examined the effects of other anaesthetic agents such as ketamine, zoletile mixture, isoflurane or halothane reported that none had any effect on either 5-HT<sub>2</sub> receptors or cerebellar non-specific binding.<sup>42</sup> Third, we cannot exclude the effects of the muscle relaxant succinylcholine on brain 5-HT<sub>2</sub> receptors as no previous study assessed its effects. Fourth, the method used to assess changes in 5-HT<sub>2</sub> receptors in this study does not provide an absolute quantification of 5-HT<sub>2</sub> receptor binding. In fact, the changes in 5-HT<sub>2</sub> receptor binding reported here are relative changes between pre- and post-treatment scans in total bound concentration of ligand. Provided that non-specific binding did not change during treatment (an assumption also required if we had used a cerebellar reference region), these changes reflect a change in specific binding. Further, these reported changes are relative to total pre-treatment binding at the reported locations. Assuming the changes in non-specific binding are negligible, our method, although providing an estimate of change in specific binding that is proportional to the change in 5-HT<sub>2</sub> binding potential, systematically underestimates the true change in 5-HT<sub>2</sub> receptors. This may have been one of the reasons for a smaller observed effect of ECT on 5-HT<sub>2</sub> receptors in this study. Fifth, in the absence of a control group, we cannot exclude the possibility of a systematic change in 5-HT<sub>2</sub> binding over time that is unrelated to treatment. However, the observation by Chow *et al*<sup>43</sup> of test-retest variability of 1.9% in frontal lobes and 3.3% in temporal lobes without evidence of significant systematic change makes it unlikely that the change we observed (3.8% averaged over the entire cluster, with a 6.7% peak reduction) was as a result of systematic change unrelated to treatment.

In conclusion, this study provides evidence that, in contrast to the effects of electroconvulsive shock on 5-HT<sub>2</sub> receptors in rodents, ECT in individuals with depression down-regulates brain 5-HT<sub>2</sub> receptors in the limbic and prefrontal cortical brain areas that have previously been implicated in the neurobiology of depression. The findings of this study taken in conjunction with the findings of previous studies of the effects of antidepressants on brain 5-HT<sub>2</sub> receptors, consolidates the role of brain 5-HT<sub>2</sub> receptors in mediating the antidepressant effects and may put to rest the controversy over the last four decades.

**Lakshmi N. Yatham**, MBBS, FRCPC, MRCPsych, Department of Psychiatry, University of British Columbia, Vancouver, Canada; **Peter F. Liddle**, MBBS, MRCPsych, Department of Psychiatry, University of Nottingham, UK; **Raymond W. Lam**, MD, FRCPC, **Athanasios P. Zis**, MD, FRCPC, Department of Psychiatry, University of British Columbia, Vancouver, Canada; **A. Jon Stoessl**, MD, FRCPC, **Vesna Sossi**, PhD, Pacific Parkinson's Research Center, University of British Columbia, Vancouver, Canada; **Michael J. Adam**, PhD, **Thomas J. Ruth**, PhD, Pacific Parkinson's Research Center and TRIUMF, University of British Columbia, Vancouver, Canada

**Correspondence:** Lakshmi N. Yatham, Professor of Psychiatry, Vice Chair for Research and International Affairs, UBC Department of Psychiatry, The University of British Columbia, UBC Hospital, 2255 Wesbrook Mall, Vancouver, BC, V6T 2A1, Canada. Email: yatham@exchange.ubc.ca

First received 15 Jun 2009, final revision 24 Feb 2010, accepted 11 Mar 2010

## Funding

This study was funded by National Alliance for Research on Schizophrenia and Depression (NARSAD) Young Investigator Award as well as a Canadian Institutes of Health Research (CIHR) operating grant to L.N.Y.

## References

- Kellar KJ, Cascio CS, Butler JA, Kurtzke RN. Differential-effects of electroconvulsive shock and anti-depressant drugs on serotonin-2 receptors in rat-brain. *Eur J Pharmacol* 1981; **69**: 515–8.
- Peroutka SJ, Snyder SH. Long-term anti-depressant treatment decreases spiperidol-labeled serotonin receptor-binding. *Science* 1980; **210**: 88–90.
- Eison AS, Yocca FD, Gianutsos G. Effect of chronic administration of anti-depressant drugs on 5-HT<sub>2</sub>-mediated behavior in the rat following nor-adrenergic or serotonergic denervation. *J Neural Transm Gen Sect* 1991; **84**: 19–32.
- Blackshear MA, Sandersbush E. Serotonin receptor sensitivity after acute and chronic treatment with Mianserin. *J Pharmacol Exp Ther* 1982; **221**: 303–8.
- Yatham LN, Liddle PF, Dennie J, Shiah IS, Adam MJ, Lane CJ, et al. Decrease in brain serotonin-2 receptor binding in patients with major depression following desipramine treatment: a positron emission tomography study with fluorine-18-labeled setoperone. *Arch Gen Psychiatry* 1999; **56**: 705–11.
- Meyer JH, Kapur S, Eisfeld B, Brown GM, Houle S, DaSilva J, et al. The effect of paroxetine on 5-HT<sub>2A</sub> receptors in depression: an [<sup>18</sup>F]setoperone PET imaging study. *Am J Psychiatry* 2001; **158**: 78–85.
- Mischoulon D, Dougherty DD, Bottonari KA, Gresham RL, Sonawalla SB, Fischman AJ, et al. An open pilot study of nefazodone in depression with anger attacks: relationship between clinical response and receptor binding. *Psychiatry Res* 2002; **116**: 151–61.
- Meyer JH. Applying neuroimaging ligands to study major depressive disorder. *Semin Nucl Med* 2008; **38**: 287–304.
- Blin J, Sette G, Fiorelli M, Bletry O, Elghozi JL, Crouzel C, et al. A method for the in-vivo investigation of the serotonergic 5-HT<sub>2</sub> receptors in the human cerebral-cortex using positron emission tomography and F-18 labeled setoperone. *J Neurochem* 1990; **54**: 1744–54.
- Crouzel C, Guillaume M, Barre L, Lemaire C, Pike VW. Ligands and tracers for PET studies of the 5-HT system – current status. *Nucl Med Biol* 1992; **19**: 857–70.
- First MB, Spitzer RL, Gibbon M, Williams JBW. *Structured Clinical Interview for DSM-IV-TR Axis I Disorders: Research Version, Patient Edition (SCID-I/P)*. Biometrics Research, 2002.
- American Psychiatric Association. *Diagnostic and Statistical Manual of Mental Disorders (4th edn) (DSM-IV)*. APA, 1994.
- Hamilton M. Citation classic – a rating-scale for depression. *Curr Contents Clin Pract* 1981; **33**: 18.
- Williams JBW, Link MJ, Rosenthal NE, Terman M. *Structured Interview Guide for the Hamilton Depression Rating Scale, Seasonal Affective Disorders version (SIGH-SAD)*. New York State Psychiatric Institute, 1988.
- Yatham LN, Liddle PF, Shiah IS, Scarrow G, Lam RW, Adam MJ, et al. Brain serotonin<sub>2</sub> receptors in major depression: a positron emission tomography study. *Arch Gen Psychiatry* 2000; **57**: 850–8.
- Shiah IS, Yatham LN, Srisuranont M, Lam RW, Tam EM, Zis AP. Does the addition of pindolol accelerate the response to electroconvulsive therapy in patients with major depression? A double-blind, placebo-controlled pilot study. *J Clin Psychopharmacol* 2000; **20**: 373–8.
- Petit-Taboue MC, Landeau B, Barre L, Onfroy MC, Noel MH, Baron JC. Parametric PET imaging of 5HT<sub>2A</sub> receptor distribution with F-18-setoperone in the normal human neocortex. *J Nucl Med* 1999; **40**: 25–32.
- Desjardins AE, Kiehl KA, Liddle PF. Removal of confounding effects of global signal in functional MRI analyses. *Neuroimage* 2001; **13**: 751–58.
- Worsley KJ. Local maxima and the expected euler characteristic of excursion sets of chi(2), F and T fields. *Adv Appl Probab* 1994; **26**: 13–42.
- Friston KJ, Frith CD, Liddle PF, Frackowiak RSJ. Comparing functional (Pet) images – the assessment of significant change. *J Cerebr Blood F Metab* 1991; **11**: 690–9.
- Genovese CR, Lazar NA, Nichols T. Thresholding of statistical maps in functional neuroimaging using the false discovery rate. *Neuroimage* 2002; **15**: 870–8.
- Logan J, Fowler JS, Volkow ND, Wang GJ, Ding YS, Alexoff DL. Distribution volume ratios without blood sampling from graphical analysis of PET data. *J Cerebr Blood F Metab* 1996; **16**: 834–40.
- Klimek V, Zak-Knapik J, Mackowiak M. Effects of repeated treatment with fluoxetine and citalopram, 5-HT uptake inhibitors, on 5-HT<sub>1A</sub> and 5-HT<sub>2</sub> receptors in the rat brain. *J Psychiatry Neurosci* 1994; **19**: 63–7.
- Kellar KJ, Stockmeier CA. Effects of electroconvulsive shock and serotonin axon lesions on beta-adrenergic and serotonin-2 receptors in rat-brain. *Ann NY Acad Sci* 1986; **462**: 76–90.
- Vetulani J, Lebrecht U, Pilc A. Enhancement of responsiveness of the central serotonergic system and serotonin-2 receptor density in rat frontal-cortex by electroconvulsive treatment. *Eur J Pharmacol* 1981; **76**: 81–5.
- Strome EM, Clark CM, Zis AP, Doudet DJ. Electroconvulsive shock decreases binding to 5-HT<sub>2</sub> receptors in nonhuman primates: an in vivo positron emission tomography study with [<sup>18</sup>F]setoperone. *Biol Psychiatry* 2005; **57**: 1004–10.
- Mayberg H, Goldapple K, Macintosh AR. Is there a final common pathway mediating depression remission? The functional neuroimaging evidence. *Biol Psychiatry* 2002; **51**: 7–8S.
- Mayberg H. Towards a neural systems model of depression: evidence of dysfunctional limbic-cortical circuits. *Clin Neuropsychol* 2003; **17**: 85–6.
- D'haenen H, Bossuyt A, Mertens J, Bossuyt-Piron C, Gijsemans M, Kaufman L. SPECT imaging of serotonin-2 receptors in depression. *Psychiatry Res* 1992; **45**: 227–37.
- Biver F, Wikler D, Lotstra F, Damhaut P, Goldman S, Mendlewicz J. Serotonin 5-HT<sub>2</sub> receptor imaging in major depression: focal changes in orbito-insular cortex. *Br J Psychiatry* 1997; **171**: 444–8.
- Schotte A, Maloteaux JM, Laduron PM. Characterization and regional distribution of serotonin S<sub>2</sub>-receptors in human brain. *Brain Res* 1983; **276**: 231–5.
- Mintun MA, Sheline YI, Moerlein SM, Vlessenko AG, Huang YY, Snyder AZ. Decreased hippocampal 5-HT<sub>2A</sub> receptor binding in major depressive disorder: in vivo measurement with [<sup>18</sup>F]Altanserin positron emission tomography. *Biol Psychiatry* 2004; **55**: 217–24.
- Meyer JH, McMMain S, Kennedy SH, Korman L, Brown GM, DaSilva JN, et al. Dysfunctional attitudes and 5-HT<sub>2</sub> receptors during depression and self-harm. *Am J Psychiatry* 2003; **160**: 90–9.
- Bhagwagar Z, Hinz R, Taylor M, Fancy S, Cowen P, Grasby P. Increased 5-HT<sub>2A</sub> receptor binding in euthymic, medication-free patients recovered from depression: a positron emission study with [<sup>11</sup>C] MDL 100,907. *Am J Psychiatry* 2006; **163**: 1580–7.
- Tarazi FI, Zhang KH, Baldessarini RJ. Long-term effects of olanzapine, risperidone, and quetiapine on serotonin 1A, 2A and 2C receptors in rat forebrain regions. *Psychopharmacol* 2002; **161**: 263–70.
- Tohen M, Vieta E, Calabrese J, Ketter TA, Sachs G, Bowden C, et al. Efficacy of olanzapine and olanzapine-fluoxetine combination in the treatment of bipolar I depression. *Arch Gen Psychiatry* 2003; **60**: 1079–88.
- Calabrese JR, Keck PE, Macfadden W, Minkwitz M, Ketter TA, Weisler RH, et al. A randomized, double-blind, placebo-controlled trial of quetiapine in the treatment of bipolar I or II depression. *Am J Psychiatry* 2005; **162**: 1351–60.
- Burnet PJW, Chen CPLH, McGowan S, Franklin M, Harrison PJ. The effects of clozapine and haloperidol on serotonin-1A, -2A and -2C receptor gene expression and serotonin metabolism in the rat forebrain. *Neuroscience* 1996; **73**: 531–40.
- Tohen M, Goldberg JF, Arrillaga AMGP, Azorin JM, Vieta E, Hardy-Bayle MC, et al. A 12-week, double-blind comparison of olanzapine vs haloperidol in the treatment of acute mania. *Arch Gen Psychiatry* 2003; **60**: 1218–26.
- Yatham LN, Liddle PF, Shiah IS, Lam RW, Adam MJ, Zis AP, et al. Effects of rapid tryptophan depletion on brain 5-HT(2) receptors: a PET study. *Br J Psychiatry* 2001; **178**: 448–53.
- Mamo D, Sedman E, Tillner J, Sellers EM, Romach MK, Kapur S. EMD 281014, a specific and potent 5HT<sub>2</sub> antagonist in humans: a dose-finding PET study. *Psychopharmacol (Berl)* 2004; **175**: 382–8.
- Elfving B, Bjornholm B, Knudsen GM. Interference of anaesthetics with radioligand binding in neuroreceptor studies. *Eur J Nucl Med Mol Imaging* 2003; **30**: 912–5.
- Chow TW, Mamo DC, Uchida H, Graff-Guerrero A, Houle S, Smith GS, et al. Test-retest variability of high resolution positron emission tomography (PET) imaging of cortical serotonin (5HT<sub>2A</sub>) receptors in older, healthy adults. *BMC Med Imaging* 2009; **9**: 12.