

Estuarine and Coastal Marine Science

Editors:

N. C. Flemming

Institute of Oceanographic Sciences, Wormley, Godalming Surrey, England

B. H. Ketchum

Woods Hole Oceanographic Institution, Massachusetts, USA

E. Naylor

Department of Marine Biology University of Liverpool, Port Erin, Isle of Man

Publication

Six issues per year,
January–November

Subscription

Volume 5, 1977
£26.75 (UK), £32.10 (overseas)
Prices include postage

Published by Academic Press in association with the Estuarine and Brackish Water Sciences Association

Estuarine and Coastal Marine Science is devoted to a multi-disciplinary analysis of coastal and brackish-water phenomena from inland saline waters and from the edge of the Continental Shelf to the upper limits of tidal or spray action. Subjects examined include zoology, botany, geology, sedimentology, physiography, chemistry, physical oceanography and meteorology of these areas.

From Recent Issues:

B. Patel, C. D. Mulay and A. K. Ganguly: Radioecology of Bombay Harbour – a tidal estuary. **G. Billen:** Nitrification in the Scheldt Estuary (Belgium and the Netherlands).

H. C. Shellard and L. Draper: Wind and wave relationships in U.K. coastal waters.

C. C. Ebbesmeyer, C. A. Barnes and C. W. Langley: Application of an advective-diffusive equation to a water parcel observed in a fjord.

M. R. Chambers and H. Milne: The production of *Macoma balthica* (L.) in the Ythan estuary.

Journal of Fish Biology

Editor:

Donald W. Jolly

*Huntingdon Research Centre
Huntingdon, England*

The adaptation of histochemical methods to explain fish biochemistry, the use of the electron microscope to elucidate fish morphology and the application of genetic engineering are contributing to major advances in the understanding of ichthyology.

The *Journal of Fish Biology* is now recognised as the leading international journal for scientists engaged in all aspects of fish research.

From Recent Issues:

R. J. Valenti: Induced polyploidy in *Tilapia aurea* by means of temperature shock treatment. **A. B. Stasko:** Progress of migrating Atlantic salmon along an estuary, observed by ultrasonic tracking. **M. Gaudet, J. G. Racicot and C. Leray:** Enzyme activities of plasma and selected tissues in rainbow trout. **M. J. Corbel:** The immune response in fish: a review.

R. Bootsma, P. de Kinkelin and M. Le Berre: Transmission experiments with pike fry rhabdovirus.

Publication

Monthly

Subscription

Volumes 10 and 11, 1977
£42.80 (UK), £51.40 (overseas)
Prices include postage

Published for the Fisheries Society of the British Isles by Academic Press

Academic Press

London New York San Francisco

A Subsidiary of Harcourt Brace Jovanovich, Publishers

24–28 Oval Road, London NW1, England

111 Fifth Avenue, New York, NY 10003, USA

Australian Office: PO Box 300, North Ryde, NSW 2113, Australia



The Eggs and Planktonic Stages of British Marine Fishes

F. S. RUSSELL, F.R.S.

**September 1976, xvi + 524 pp.
£19.50/\$49.25 0.12.604050.8**

This comprehensive work describes the early development stages of the North-West European marine fishes. The aim of the book is twofold. Firstly, as an aid to identification, to give detailed descriptions of the eggs, larvae and postlarvae of all the known coastal species whose early stages are likely to be found within the 200 metre line. Secondly to provide a survey of all the various publications on the biology of each species and of the experimental work done on them in their planktonic stages. Many fine illustrations, the work of the author himself, are included to help the reader to identify specimens, while the full bibliography will enable anyone starting research on the subject to find out all the information that is currently available.

All those who have an interest in plankton will not fail to recognize the immense value of this work, which will remain a standard authority on the subject for many years to come.

Academic Press
London New York
San Francisco

*A Subsidiary of Harcourt
Brace Jovanovich, Publishers*
24-28 Oval Road, London NW1,
England
111 Fifth Avenue, New York,
NY 10003, USA



Australian Office:
PO Box 300, North Ryde,
NSW 2113, Australia

THE JOURNAL OF ANIMAL ECOLOGY

EDITORS: L. R. TAYLOR and J. M. ELLIOTT

VOL. 45, No. 3

OCTOBER 1976

- J. A. Bishop and D. J. Hartley.** The size and age structure of rural populations of *Rattus norvegicus* containing individuals resistant to the anticoagulant poison Warfarin.
- Peter L. Meserve.** Habitat and resource utilization by rodents of a California coastal sage scrub community.
- J. Parsons, G. Chabrzyk and N. Duncan.** Effects of hatching date on post-fledging survival in herring gulls.
- William Z. Lidicker Jr.** Social behaviour and density regulations in house mice living in large enclosures.
- J. W. Moore and I. C. Potter.** Aspects of feeding and lipid deposition and utilization in the lampreys, *Lampetra fluviatilis* (L.) and *Lampetra planeri* (Bloch).
- Francis L. Rose and D. Armentrout.** Adaptive strategies of *Ambystoma tigrinum* Green inhabiting the Llano Estacado of West Texas.
- J. A. Kitching, F. J. Ebling, J. C. Gamble, R. Hoare, A. A. Q. R. McLeod and T. A. Norton.** The ecology of Lough Inc. XIX. Seasonal changes in the Western Trough.
- Colin R. Townsend and Alan G. Hildrew.** Field experiments on the drifting, colonization and continuous redistribution of stream benthos.
- H. F. Evans.** The population dynamics of *Anthocoris confusus* in a laboratory cage ecosystem.
- J. R. Beddington, C. A. Free and J. H. Lawton.** Concepts of stability and resilience in predator-prey models.
- A. F. G. Dixon.** Reproductive strategies of the alate morphs of the bird cherry-cat aphid *Rhopalosiphum padi* L.
- I. Newton.** Breeding of sparrowhawks (*Accipiter nisus*) in different environments.
- L. M. Cook, Eleanor W. Thomason and Allen M. Young.** Population structure, dynamics and dispersal of the tropical butterfly *Heliconius charitonius*.
- John F. Boyer.** The effects of prior environments on *Tribolium castaneum*.
- Phillip Williamson.** Size-weight relationships and field growth rates of the landsnail *Cepaea nemoralis* L.
- Paul J. Greenwood and Paul H. Harvey.** The adaptive significance of variation in breeding area fidelity of the blackbird (*Turdus merula* L.).
- J. C. Pernetta.** Diets of the shrews *Sorex araneus* L. and *Sorex minutus* L. in Wytham grassland.
- T. T. Macan.** A twenty-one-year study of the water-bugs in a moorland fishpond.
- J. M. Elliott.** The energetics of feeding, metabolism and growth of brown trout (*Salmo trutta* L.) in relation to body weight, water temperature and ration size.
- T. R. E. Southwood and H. N. Comins.** A synoptic population model.
- Reviews.

Subscription price £30.00 per volume of three parts

BLACKWELL SCIENTIFIC PUBLICATIONS LTD

OSNEY MEAD · OXFORD

THE JOURNAL OF ECOLOGY

EDITORS: P. J. GRUBB, C. H. GIMINGHAM and J. H. TALLIS

VOL. 64, NO. 3

NOVEMBER 1976

Bruce E. Mahall and Roderic B. Park. The ecotone between *Spartina foliosa* Trin. and *Salicornia virginica* L. in salt marshes of Northern San Francisco Bay. II. Soil water and salinity.

Bruce E. Mahall and Roderic B. Park. The ecotone between *Spartina foliosa* Trin. and *Salicornia virginica* L. in salt marshes of Northern San Francisco Bay. III. Soil aeration and tidal immersion.

Frédéric J.-P. Briand. Seasonal variations and associations of southern California nearshore phytoplankton.

H. van Groenewoud. Theoretical considerations on the covariation of plant species along ecological gradients with regard to multivariate analysis.

John Miles. The growth of *Nartheceum ossifragum* (L.) Huds in some southern English mires.

Anne P. Bonny. Recruitment of pollen to the seston and sediment of some Lake District lakes.

Douglas G. Sprugel. Dynamic structure of wave-generated *Abies balsamea* forests in the north-eastern United States.

J. B. Hall and M. D. Swaine. Classification and ecology of closed-canopy forest in Ghana.

R. H. Marrs and John Proctor. The response of serpentine and non-serpentine *Agrostis stolonifera* L. to magnesium and calcium.

J. Turner, D. W. Cole and S. P. Gessel. Mineral nutrient accumulations and cycling in a stand of red alder (*Alnus rubra*).

J. P. Grime and A. V. Curtis. The interaction of drought and mineral nutrient stress in calcareous grassland.

Paul A. Colinvaux and Eileen K. Schofield. Historical ecology in the Galápagos Islands. I. A holocene pollen record from El Junco Lake, Isla San Cristobal.

Paul A. Colinvaux and Eileen K. Schofield. Historical ecology in the Galápagos Islands. II. A holocene spore record from El Junco Lake, Isla San Cristobal.

Joan M. Hett and Orié L. Loucks. Age structure models of balsam fir and eastern hemlock.

John M. Bernard. The life history and population dynamics of shoots of *Carex rostrata*.

Gordon W. Frankie, Paul A. Opler and Kamaljit S. Bawa. Foraging behaviour of solitary bees: implications for outcrossing of a neotropical forest tree species.

Phillip Williamson. Above-ground primary production of chalk grassland allowing for leaf death.

BIOLOGICAL FLORA OF THE BRITISH ISLES

G. A. M. Scott and R. E. Randall. *Crambe maritima* L.

A. J. C. Malloch. An annotated bibliography of the Burren.

Reviews

Subscription price £30.00 per volume of three parts

BLACKWELL SCIENTIFIC PUBLICATIONS LTD

OSNEY MEAD · OXFORD

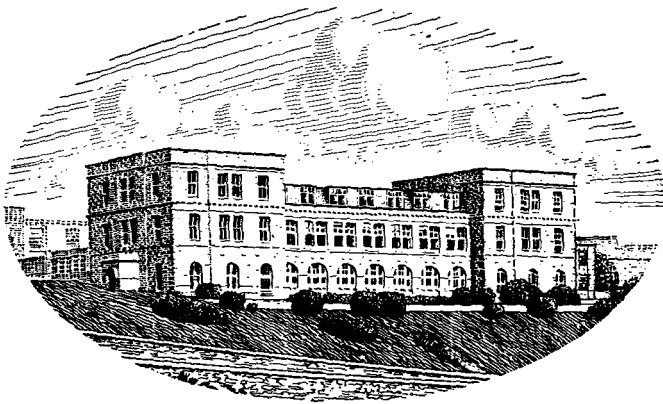
**JOURNAL OF THE
MARINE BIOLOGICAL ASSOCIATION
OF THE UNITED KINGDOM**

PUBLISHED BY
THE SYNDICS OF THE CAMBRIDGE UNIVERSITY PRESS
The Pitt Building, Trumpington Street, Cambridge CB2 1RP
Bentley House, 200 Euston Road, London, N.W.1
32 East 57th Street, New York, N.Y.10022

© Copyright Marine Biological Association of the U.K.

Printed in Great Britain at the University Printing House, Cambridge

**JOURNAL OF THE
MARINE BIOLOGICAL ASSOCIATION
OF THE UNITED KINGDOM**



THE PLYMOUTH LABORATORY

VOLUME 56

1976

**CAMBRIDGE UNIVERSITY PRESS
CAMBRIDGE · LONDON · NEW YORK**

The Council of the Marine Biological Association wish it to be understood that they do not accept responsibility for the accuracy of statements published in this Journal, excepting when those statements are contained in an official report of the Council.

CONTENTS OF VOLUME 56

Number 1, pp. 1-261, 31 March 1976
 Number 2, pp. 263-522, 20 May 1976
 Number 3, pp. 523-815, 7 September 1976
 Number 4, pp. 817-1120, 26 November 1976

	PAGE
Report of the Council for 1975-76	1067
Income and Expenditure Account and Balance Sheet	1117
OBITUARY, SIR JAMES GRAY	523
ALLEN, J. M., BLAXTER, J. H. S. and DENTON, E. J. The functional anatomy and development of the swimbladder - inner ear - lateral line system in herring and sprat	471
ANTIA, N. J., <i>see</i> BERLAND, BONIN, MAESTRINI, LIZÁRRAGA-PARTIDA and ANTIA	629
BAUGHMAN, G. A., <i>see</i> STYRON <i>et al.</i>	13
BERLAND, B. R., BONIN, D. J., MAESTRINI, S. Y., LIZÁRRAGA-PARTIDA, M. L. and ANTIA, N. J. The nitrogen concentration requirement of D-glucosamine for supporting effective growth of marine microalgae	629
BEST, A. C. G. and BONE, Q. On the integument and photophores of the alepocephalid fishes <i>Xenodermichthys</i> and <i>Photostylus</i>	227
BETTISON, J. C. and DAVENPORT, J. Salinity preference in gammarid amphipods with special reference to <i>Marinogammarus marinus</i> (Leach)	135
BINYON, J. The permeability of the asteroid podial wall to water and potassium ions	639
BLAKE, R. W. On seahorse locomotion	939
BLAXTER, J. H. S. and DENTON, E. J. Function of the swimbladder - inner ear - lateral line system of herring in the young stages <i>See also</i> ALLEN, BLAXTER and DENTON <i>See also</i> CURRIE, BLAXTER and JOYCE <i>See also</i> DENTON and BLAXTER	487 471 1049 787
BONE, Q. <i>See</i> BEST and BONE <i>See</i> MACKIE and BONE	227 751
BONE, Q. and CHUBB, A. D. On the structure of corpuscular proprioceptive endings in sharks	925
BONEY, A. D. Observations on the silicoflagellate <i>Dictyocha speculum</i> Ehrenb.: double skeletons and mirror- images	263
BONIN, D. J., <i>see</i> BERLAND, BONIN, MAESTRINI, LIZÁRRAGA-PARTIDA and ANTIA	629
BRANSFORD, M. E., <i>see</i> STYRON <i>et al.</i>	13
BRIGGS, R. P. Biology of <i>Paranthesius anemoniae</i> in association with anemone hosts	917
BULLOCK, A. M., ROBERTS, R. J. and GORDON, J. D. M. A study on the structure of the whiting integument (<i>Merlangius merlangus</i> L.)	213
CAMPBELL, D. R., <i>see</i> STYRON <i>et al.</i>	13
CHUBB, A. D., <i>see</i> BONE and CHUBB	925
CLARK, R. B., <i>see</i> GIBSON and CLARK	649
CLARKE, M. R. and MACLEOD, N. Cephalopod remains from sperm whales caught off Iceland	733

	PAGE
CONNOR, P. M., <i>see</i> WILSON and CONNOR	769
CORNER, E. D. S., HARRIS, R. P., KILVINGTON, C. C. and O'HARA, S. C. M. Petroleum compounds in the marine food web: short-term experiments on the fate of naphthalene in <i>Calanus</i>	121
CORNER, E. D. S., HEAD, R. N., KILVINGTON, C. C. and PENNYCUICK, L. On the nutrition and metabolism of zooplankton. X. Quantitative aspects of <i>Calanus helgolandicus</i> feeding as a carnivore	345
CRISP, D. J., <i>see</i> HILDRETH and CRISP	111
CURRIE, R. I., BLAXTER, J. H. S. and JOYCE, J. The aquarium at the Dunstaffnage Marine Research Laboratory	1049
DAVENPORT, J. A comparative study of the behaviour of some balanomorph barnacles exposed to fluctuating sea water concentrations	889
<i>See also</i> BETTISON and DAVENPORT	135
DAVEY, J. T. and GEE, J. M. The occurrence of <i>Mytilicola intestinalis</i> Steuer, an intestinal copepod parasite of <i>Mytilus</i> , in the south-west of England	85
DAVIES, A. G. An assessment of the basis of mercury tolerance in <i>Dunaliella tertiolecta</i>	39
DENTON, E. J. and BLAXTER, J. H. S. The mechanical relationships between the clupeid swimbladder, inner ear and lateral line	787
<i>See also</i> ALLEN, BLAXTER and DENTON	471
<i>See also</i> BLAXTER and DENTON	487
DIXON, N. K., <i>see</i> STYRON <i>et al.</i>	13
DIXON, P. S., <i>see</i> PARKE and DIXON	527
EDMUNDS, M., POTTS, G. W., SWINFEN, R. C. and WATERS, V. L. Defensive behaviour of sea anemones in response to predation by the opisthobranch mollusc <i>Aeolidia papillosa</i> (L.)	65
FIVES, J. M. and O'BRIEN, F. I. Larval and post-larval stages of fishes recorded from the plankton of Galway Bay, 1972-73	197
GEE, J. M., <i>see</i> DAVEY and GEE	85
GIBBS, P. E. Notes on the reproductive cycles of several <i>Golfingia</i> species (Sipuncula)	909
GIBSON, P. H. and CLARK, R. B. Reproduction of <i>Dodecaceria caulleryi</i> (Polychaeta: Cirratulidae)	649
GIRSCH, S. J., HERRING, P. J. and McCAPRA, F. Structure and preliminary biochemical characterization of the bioluminescent system of <i>Ommastrephes pteropus</i> (Steenstrup) (Mollusca: Cephalopoda)	707
GORDON, J. D. M., <i>see</i> BULLOCK, ROBERTS and GORDON	213
GREEN, J. C. <i>Corymbellus aureus</i> gen. et sp.nov., a new colonial member of the Haptophyceae	31
Notes on the flagellar apparatus and taxonomy of <i>Pavlova mesolychnon</i> Van der Veer, and on the status of <i>Pavlova</i> Butcher and related genera within the Haptophyceae	595
HAGAN, T. M., <i>see</i> STYRON <i>et al.</i>	13
HARRIS, R. P. and PAFFENHÖFER, G.-A. Feeding, growth and reproduction of the marine planktonic copepod <i>Temora longicornis</i> Müller	675
The effect of food concentration on cumulative ingestion and growth efficiency of two small marine planktonic copepods	875
<i>See also</i> CORNER, HARRIS, KILVINGTON and O'HARA	121
<i>See also</i> PAFFENHÖFER and HARRIS	327
HARVIN, J., <i>see</i> STYRON <i>et al.</i>	13
HEAD, R. N. <i>See</i> CORNER, HEAD, KILVINGTON and PENNYCUICK	345
<i>See</i> PINGREE, HOLLIGAN, MARDELL and HEAD	845

	PAGE
HEIP, C. The spatial pattern of <i>Cyprideis torosa</i> (Jones, 1850) (Crustacea: Ostracoda)	179
HERRING, P. J. Bioluminescence in decapod Crustacea	1029
See also GIRSCH, HERRING and McCAPRA	707
HILDRETH, D. I. The influence of water flow rate on pumping rate in <i>Mytilus edulis</i> using a refined direct measurement apparatus	311
HILDRETH, D. I. and CRISP, D. J. A corrected formula for calculation of filtration rate of bivalve molluscs in an experimental flowing system	111
HOLLAND, N. D. The fine structure of the yolk nucleus in oocytes of <i>Antedon bifida</i> (Pennant) (Echinodermata: Crinoidea)	59
HOLLIGAN, P. M., see PINGREE, HOLLIGAN, MARDELL and HEAD	845
HUNTER, B. and SIMPSON, A. E. A benthic grab designed for easy operation and durability	951
JOHANSSON-SJÖBECK, M.-L. and STEVENS, J. D. Haematological studies on the blue shark, <i>Prionace glauca</i> L.	237
JOYCE, J., see CURRIE, BLAXTER and JOYCE	1049
KAIN, J. M. (Mrs N. S. Jones) The biology of <i>Laminaria hyperborea</i> . VIII. Growth on cleared areas	267
The biology of <i>Laminaria hyperborea</i> . IX. Growth pattern of fronds	603
KILVINGTON, C. C. See CORNER, HARRIS, KILVINGTON and O'HARA	121
See CORNER, HEAD, KILVINGTON and PENNYCUICK	345
LEMICHE, H. New British species of <i>Doto</i> Oken, 1815 (Mollusca: Opisthobranchia)	691
LIZÁRRAGA-PARTIDA, M. L., see BERLAND, BONIN, MAESTRINI, LIZÁRRAGA-PARTIDA and ANTIA	629
LUTZ, R. A. Annual growth patterns in the inner shell layer of <i>Mytilus edulis</i> L.	723
McCAPRA, F., see GIRSCH, HERRING and McCAPRA	707
McCARTNEY, B. S. Comparison of the acoustic and biological sampling of the sonic scattering layers: R.R.S. 'Discovery' SOND Cruise, 1965	161
MACKIE, G. O. and BONE, Q. Skin impulses and locomotion in an ascidian tadpole	751
MACLEOD, N., see CLARKE and MACLEOD	733
MCNEILL, C. R., see STYRON <i>et al.</i>	13
MAESTRINI, S. Y., see BERLAND, BONIN, MAESTRINI, LIZÁRRAGA-PARTIDA and ANTIA	629
MARDELL, G. T., see PINGREE, HOLLIGAN, MARDELL and HEAD	845
MÖLLER, H. Reduction of the intestinal parasite fauna of marine fishes in captivity	781
MOORE, M. N. and STEBBING, A. R. D. The quantitative cytochemical effects of three metal ions on a lysosomal hydrolase of a hydroid	995
MUNTZ, W. R. A. On yellow lenses in mesopelagic animals	963
NICHOLSON, D., see SOUTHWARD, ROBINSON, NICHOLSON and PERRY	247
O'BRIEN, F. I. The life-cycle of <i>Sagitta elegans</i> Verrill and <i>Sagitta setosa</i> J. Müller in Galway Bay, west coast of Ireland, 1972-1973	191
See also FIVES and O'BRIEN	197
O'HARA, S. C. M., see CORNER, HARRIS, KILVINGTON and O'HARA	121

	PAGE
PAFFENHÖFER, G.-A. and HARRIS, R. P.	
Feeding, growth and reproduction of the marine planktonic copepod <i>Pseudocalanus elongatus</i> Boeck	327
See also HARRIS and PAFFENHÖFER	675
See also HARRIS and PAFFENHÖFER	875
PARKE, M. and DIXON, P. S.	
Check-list of British marine algae – third revision	527
PEARRE, S.	
Gigantism and partial parasitic castration of Chaetognatha infected with larval trematodes	503
PENNYCUICK, L., see CORNER, HEAD, KILVINGTON and PENNYCUICK	345
PERRY, T. J., see SOUTHWARD, ROBINSON, NICHOLSON and PERRY	247
PIENAAR, R. N.	
The microanatomy of <i>Hymenomonas lacuna</i> sp.nov. (Haptophyceae)	1
PINGREE, R. D., HOLLIGAN, P. M., MARDELL, G. T. and HEAD, R. N.	
The influence of physical stability on spring, summer and autumn phytoplankton blooms in the Celtic Sea	845
POTTS, G. W.	
A diver controlled plankton net	959
See also EDMUNDS, POTTS, SWINFEN and WATERS	65
RAINBOW, P. S. and WALKER, G.	
The feeding apparatus of the barnacle nauplius larva: a scanning electron microscope study	321
ROBERTS, R. J., see BULLOCK, ROBERTS and GORDON	213
ROBINSON, S. G., see SOUTHWARD, ROBINSON, NICHOLSON and PERRY	247
SANTER, R. M.	
The distribution of collagen bundles and an epicardial coronary vasculature in the plaice (<i>Pleuronectes platessa</i> L.) heart ventricle at different ages	241
SAUNDERS, W. H., see STYRON <i>et al.</i>	13
SIMPSON, A. E., see HUNTER and SIMPSON	951
SOUTH, G. R.	
A check-list of marine algae of Eastern Canada – first revision	817
SOUTHWARD, A. J.	
On the taxonomic status and distribution of <i>Chthamalus stellatus</i> (Cirripedia) in the north-east Atlantic region: with a key to the common intertidal barnacles of Britain	1007
SOUTHWARD, A. J., ROBINSON, S. G., NICHOLSON, D. and PERRY, T. J.	
An improved stereocamera and control system for close-up photography of the fauna of the continental slope and outer shelf	247
STEBBING, A. R. D.	
The effects of low metal levels on a clonal hydroid	977
See also MOORE and STEBBING	995
STEVENS, J. D.	
First results of shark tagging in the north-east Atlantic, 1972–1975	929
See also JOHANSSON-SJÖBECK and STEVENS	237
STYRON, C. E., HAGAN, T. M., CAMPBELL, D. R., HARVIN, J., WHITTENBURG, N. K., BAUGHMAN, G. A., BRANSFORD, M. E., SAUNDERS, W. H., WILLIAMS, D. C., WOODLE, C., DIXON, N. K. and McNEILL, C. R.	
Effects of temperature and salinity on growth and uptake of ⁷⁵ Zn and ¹³⁷ Cs for six marine algae	13
SWINFEN, R. C., see EDMUNDS, POTTS, SWINFEN and WATERS	65
TAYLOR, A. C.	
Burrowing behaviour and anaerobiosis in the bivalve <i>Arctica islandica</i> (L.)	95
THURSTON, M. H.	
New pelagic amphipods (Crustacea: Amphipoda) collected on the SOND Cruise	143
The vertical distribution and diurnal migration of the Crustacea Amphipoda collected during the SOND Cruise, 1965. I. The Gammaridea	359
The vertical distribution and diurnal migration of the Crustacea Amphipoda collected during the SOND Cruise, 1965. II. The Hyperiidea and general discussion	383

	PAGE
VAN DER VEER, J. <i>Pavlova calceolata</i> (Haptophyceae), a new species from the Tamar Estuary, Cornwall, England	21
WALKER, G., <i>see</i> RAINBOW and WALKER	321
WATERS, V. L., <i>see</i> EDMUNDS, POTTS, SWINFEN and WATERS	65
WHITTENBURG, N. K., <i>see</i> STYRON <i>et al.</i>	13
WILLIAMS, D. C., <i>see</i> STYRON <i>et al.</i>	13
WILSON, D. P. <i>Sabellaria alveolata</i> (L.) at Duckpool, North Cornwall, 1975	305
WILSON, J. B. Attachment of the coral <i>Caryophyllia smithii</i> S. & B. to tubes of the polychaete <i>Ditrupa arietina</i> (Müller) and other substrates	291
WILSON, K. W. and CONNOR, P. M. The effect of china clay on the fish of St Austell and Mevagissey Bays	769
WOODLE, C., <i>see</i> STYRON <i>et al.</i>	13

SHORT NOTES

CLARKE, M. R. Observation on sperm whale diving	809
MATTACOLA, A. D. An unusual diet for bream	810

ABSTRACTS OF MEMOIRS

RECORDING WORK AT THE PLYMOUTH LABORATORY

BARTLETT, C. A. & MOULDER, D. S., 1976. <i>A Bibliography on Marine and Estuarine Pesticide Pollution</i>	1063
BONE, Q., 1975. Muscular and energetic aspects of fish swimming	1063
BONE, Q. & MACKIE, G. O., 1975. Skin impulses and locomotion in <i>Oikopleura</i> (Tunicata: Larvacea)	515
BONE, Q., RIDGE, R. M. A. P. & RYAN, K. P., 1976. Stretch receptors in urodele limb muscles	1063
BONE, Q. & RYAN, K. P., 1975. On the presence of a transverse system in tunicate muscle	813
BRYAN, G. W., 1974. Adaptation of an estuarine polychaete to sediments containing high concentrations of heavy metals	259
DILLY, P. N. & NIXON, M., 1976. The cells that secrete the beaks in octopods and squids (Mollusca, Cephalopoda)	1063
FÄNGE, R. & JOHANSSON-SJÖBECK, M.-L., 1975. The effect of splenectomy on the hematology and on the activity of δ -aminolevulinic acid dehydratase (ALA-D) in hemopoietic tissues of the dogfish, <i>Scyliorhinus canicula</i> (Elasmobranchii)	515
HOLLIGAN, P. M. & GOODAY, G. W., 1975. Symbiosis in <i>Convoluta roscoffensis</i>	813
LIDDCOAT, M. I., TIBBITTS, S. & BUTLER, E. I., 1975. The determination of ammonia in seawater	515
MACDONALD, S., 1975. Hatching rhythms in three species of <i>Diclidophora</i> (Monogenea) with observations on host behaviour.	516
MEVES, H., 1976. The effect of zinc on the late displacement current in squid giant axons.	813
MOULDER, D. S. & VARLEY, A. (compilers), 1975. <i>A Bibliography on Marine and Estuarine Oil Pollution</i> , Supplement 1	259
PIENAAR, R. N., 1976. The microanatomy of <i>Sphaleromantis marina</i> sp.nov. (Chrysophyceae)	1064
PINGREE, R. D., PUGH, P. R., HOLLIGAN, P. M. & FORSTER, G. R., 1975. Summer phytoplankton blooms and red tides along tidal fronts in the approaches to the English Channel	813

	PAGE
ROBERTS, B. L. & WITKOVSKY, P., 1975. A functional analysis of the mesencephalic nucleus of the fifth nerve in the selachian brain	516
SKIRROW, G. & WHITFIELD, M., 1975. The effect of increases in the atmospheric carbon dioxide content on the carbonate ion concentration of surface ocean water at 25 °C	516
SOUTHWARD, A. J., 1975. Intertidal and shallow water Cirripedia of the Caribbean	1064
SOUTHWARD, A. J., 1975. On the evolutionary significance of the mode of feeding of Pogonophora	814
SOUTHWARD, E. C., 1975. A study of the structure of the opisthosoma of <i>Siboglinum fiordicum</i>	814
SOUTHWARD, E. C., 1975. Fine structure and phylogeny of the Pogonophora	259
WHITFIELD, M., 1975. An improved specific interaction model for seawater at 25 °C and 1 atmosphere total pressure	516
WHITFIELD, M., 1975. Sea water as an electrolyte solution	517
WHITFIELD, M., 1975. The effects of temperature and pressure on speciation	814
WHITFIELD, M., 1975. The extension of chemical models for sea water to include trace components at 25 °C and 1 atm pressure	517
WHITFIELD, M., 1975. The electroanalytical chemistry of sea water	814
WITKOVSKY, P. & ROBERTS, B. L., 1975. The light microscopical structure of the mesencephalic nucleus of the fifth nerve in the selachian brain.	517

BOOK REVIEW

<i>Sea Surveying</i> . Edited by A. E. INGHAM	519
---	-----

BOOK NOTICES

<i>Phytoplankton</i> . By A. D. BONEY	261
<i>Algal Cultures and Phytoplankton Ecology</i> . By G. E. FOGG	521
<i>Balanus balanoides</i> . By H. G. STUBBINGS	521
<i>Ecology, Utilization, and Management of Marine Fisheries</i> . By G. A. ROUNSEFELL	521
<i>Petroleum and the Continental Shelf of North West Europe. Volume II. Environmental Protection</i> . Edited by H. A. COLE	521
<i>Physiological Aspects of Deep Sea Biology</i> . By A. G. MACDONALD	521
<i>Recent Advances in Aquatic Mycology</i> . Edited by E. B. GARETH JONES	521
<i>The Living Ocean</i> . By E. J. FERGUSON WOOD	522
<i>Artificial and Natural Radiomucilides in Marine Life</i> . By V. G. TSYTSUGINA, N. S. RISIK and G. E. LAZORENKO	815
<i>Recent Researches in Estuarine Biology</i> . Edited by R. NATARAJAN	815
<i>Marine Ecology: A Comprehensive, Integrated Treatise on Life in Oceans and Coastal Waters, Volume III. Cultivation, Part 1</i> . Edited by O. KINNE	1065
<i>Marine Mussels: Their Ecology and Physiology</i> . Edited by B. L. BAYNE	1065
<i>Underwater Research</i> . Edited by E. A. DREW, J. N. LYTHGOE and J. D. WOODS	1065

CORRIGENDA

Page 699, last line, for *octogona* read *operculata*

Page 700, last line, for *octogona* read *operculata*

THE MARINE BIOLOGICAL ASSOCIATION OF THE UNITED KINGDOM

THE ASSOCIATION was founded in 1884 to promote accurate researches leading to the advancement of zoological and botanical science and to an increase in our knowledge of the food, life, conditions and habits of British fishes. The work of the Association is controlled by a Council elected annually by its subscribing members.

Professor T. H. Huxley took the chair at the initial meeting held in the rooms of the Royal Society and was elected the first President. Among those present were Sir John Lubbock (afterwards Lord Avebury), Sir Joseph Hooker, Professor H. N. Moseley, Mr G. J. Romanes, and Sir E. Ray Lankester who, after Professor Huxley, was for many years president of the Association. It was decided to build a laboratory at Plymouth, where a rich and varied fauna is found.

The Plymouth Laboratory was opened in June 1888, and, since that date, considerable additions have been made to the buildings, including a library, lecture-hall, and extensive laboratory accommodation with up to-date equipment. Additional sea-water reservoirs have also been built, and an aquarium, modernized in 1959, opened to the public.

Since its foundation the Association has been supported by subscriptions and donations from private members, universities, learned societies, the Fishmongers' Company and other public bodies. For some time past, however, the main financial support for the work of the Plymouth Laboratory has come from Government funds, and since 1965 the Laboratory has been grant-aided through the Natural Environment Research Council.

The Marine Biological Association, under the direction of its Council, undertakes research in all branches of marine science and the main results are published in this journal. Accounts of the laboratory and aquarium are to be found in Vol. 27 (p. 761), Vol. 39 (p. 391) and Vol. 43 (p. 281), and summaries of the activities and research of the Association are given annually in the Report of the Council in the November issue of the Journal.

The laboratory is open throughout the year and its work is carried out by a fully qualified research staff under the supervision of the Director. The names of the members of the staff will be found on the inner page of the front cover. Accommodation is available for British and foreign scientific workers who wish to carry out independent research in all branches of marine science. Arrangements are made for courses for advanced students, and marine animals and plants are supplied to educational institutions.

Work at sea is undertaken by three research vessels and by a motor boat, and these also collect the specimens required in the laboratory.

TERMS OF MEMBERSHIP

		£
Annual Members, receiving the Journal . . . per annum	10.00	10.00
Annual Members, without the Journal . . . per annum	2.00	2.00
Founders	100.00	100.00
Governors	500.00	500.00

Members of the Association have the following rights and privileges: they elect annually the Officers and Council; they are entitled to receive the Journal of the Association at a reduced rate; they are admitted to view the laboratory at Plymouth; they have the first claim to rent a place in the laboratory for research, with use of tanks, boats, etc; they have the privilege of occupying a table for one week in each year free of charge; and they have access to the books in the library at Plymouth during working hours.

The Commissioners of Inland Revenue have approved the Association for the purposes of Section 16, Finance Act, 1958, and that the whole of the annual subscription paid by a member who qualifies for relief under the section will be allowable as a deduction from his emoluments assessable to income tax under Schedule E.

All correspondence should be addressed to the Director, The Laboratory, Citadel Hill, Plymouth, PL1 2PB.

CONTENTS

	PAGE
SOUTH, G. R. A check-list of marine algae of eastern Canada – first revision	817
PINGREE, R. D., HOLLIGAN, P. M., MARDELL, G. T. and HEAD, R. N. The influence of physical stability on spring, summer and autumn phytoplankton blooms in the Celtic Sea	845
HARRIS, R. P. and PAFFENHÖFER, G.-A. The effect of food concentration on cumulative ingestion and growth efficiency of two small marine planktonic copepods	875
DAVENPORT, J. A comparative study of the behaviour of some balanomorph barnacles exposed to fluctuating sea water concentrations	889
GIBBS, P. E. Notes on the reproductive cycles of several <i>Golfingia</i> species (Sipuncula)	909
BRIGGS, R. P. Biology of <i>Paranthesius anemoniae</i> in association with anemone hosts	917
BONE, Q. and CHUBB, A. D. On the structure of corpuscular proprioceptive endings in sharks	925
STEVENS, J. D. First results of shark tagging in the north-east Atlantic, 1972–1975	929
BLAKE, R. W. On seahorse locomotion	939
HUNTER, B. and SIMPSON, A. E. A benthic grab designed for easy operation and durability.	951
POTTS, G. W. A diver-controlled plankton net	959
MUNTZ, W. R. A. On yellow lenses in mesopelagic animals	963
STEBBING, A. R. D. The effects of low metal levels on a clonal hydroid	977
MOORE, M. N. and STEBBING, A. R. D. The quantitative cytochemical effects of three metal ions on a lysosomal hydrolase of a hydroid	995
SOUTHWARD, A. J. On the taxonomic status and distribution of <i>Chthamalus stellatu</i> (Cirripedia) in the north-east Atlantic region: with a key to the common intertidal barnacles of Britain	1007
HERRING, P. J. Bioluminescence in decapod Crustacea	1029
CURRIE, R. I., BLAXTER, J. H. S. and JOYCE, J. The aquarium at the Dunstaffnage Marine Research Laboratory	1049
ABSTRACTS OF MEMOIRS	1063
BOOK NOTICES	1065
REPORT OF THE COUNCIL FOR 1975–6	1067
BALANCE SHEET 1975–6	1117

© Copyright by the Marine Biological Association of the U.K. 1976

The subscription price of volume 56, 1976 of the Journal to non-members of the Association is £38.00 net a volume of four parts, post free, or US \$105.00 in U.S.A. and Canada, payable in advance. Subscriptions may be sent to any bookseller or to the London or New York office of Cambridge University Press.

CAMBRIDGE UNIVERSITY PRESS
BENTLEY HOUSE, 200 EUSTON ROAD, LONDON NW1 2DB
32 EAST 57TH STREET, NEW YORK, N.Y. 10022

Printed in Great Britain at the University Printing House, Cambridge