

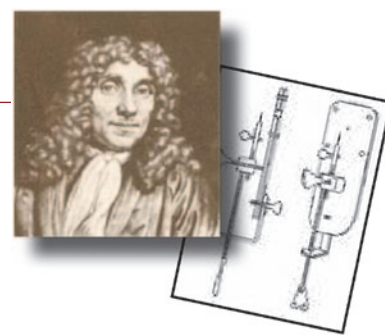
MicroscopyPioneers

Pioneers in Optics: Sir David Brewster

Michael W. Davidson

National High Magnetic Field Laboratory, Florida State University, Tallahassee, FL 32306

davidson@magnet.fsu.edu



Sir David Brewster (1781–1868)

Sir David Brewster was a Scottish physicist who invented the kaleidoscope, made major improvements to the stereoscope, and discovered the polarization phenomenon of light reflected at specific angles. Brewster was born in Jedburgh, Scotland, in 1781 and grew to become a brilliant student who entered the University of Edinburgh at the age of 12 to study the ministry. He was a prolific writer and became editor of the *Edinburgh Magazine* in 1802 and the *Edinburgh Encyclopedia* in 1808. In 1799 as a teenager, Brewster's interests turned to physics with a keen focus on optics, and he constructed several telescopes while dabbling in the physics of light. Brewster was a licensed minister of the Church of Scotland but never practiced this career, instead pursuing the finer aspects of optics and light.



Brewster's career blossomed while he was in his late twenties and early thirties. At that time, he was intensely pursuing details of the theory of light and wrote his first paper *Some Properties of Light* in 1813. One of Brewster's most important contributions to the science of physics was his work on polarization of light by reflection and with biaxial crystals. To aid in his experiments, Brewster often constructed his own tools and even improved many technical instruments of the period.

In his studies on polarized light, Brewster discovered that when light strikes a reflective surface at a certain angle (now known as Brewster's Angle), the light reflected from that surface is plane-polarized. He elucidated a simple relationship between the incident angle of the light beam and the refractive index of the reflecting material. When the angle between the incident beam and the refracted beam equals 90 degrees, the reflected light becomes polarized. This rule is often used to determine the refractive index of materials that are opaque or available only in small quantities.

Brewster was elected to the Royal Society in 1815 and eventually was one of only a handful of scientists to be awarded all three principal medals of the society. For his work in optics, Brewster was awarded the Copley Medal in 1815, the Rumford Medal in 1818, and the Royal Medal in 1830. He also was a

founder of the British Association for the Advancement of Science.

An energetic enthusiast of color, Brewster invented the kaleidoscope in 1816 and patented it the following year. He published his extensive studies on the theory, design, and construction of kaleidoscopes in 1819 in a volume entitled *Treatise on the Kaleidoscope*. Apparently there were some problems with the registration of his patent, because he was not able to enforce infringements and many companies began to offer custom versions of the kaleidoscope without paying royalties. The instrument ignited a craze in the early nineteenth century and quickly became a household toy for both children and adults alike.

Brewster was deeply interested in photography and had many conversations with Fox Talbot about the design of Talbot's Calotype process. He favored this process over the Daguerreotype and said, "While a Daguerreotype picture is much more sharp and accurate in its details than a Calotype, the latter possesses the advantage of giving a greater breadth and massiveness to its landscapes and portraits."

Brewster wrote hundreds of papers on optics and also designed a famous variation of the stereoscope—the Brewster Stereoscope. He studied the theory of this instrument and improved the performance by adding refractive lenses to his model. He wrote what many consider the definitive treatise on the stereoscope, *The Stereoscope: Its History, Theory, and Construction*. He also wrote his famous *Treatise on Optics* in 1831, and *Memoirs of the Life, Writings, and Discoveries of Sir Isaac Newton* in 1855.

He became Sir David Brewster in 1831 when he was knighted, and in the early 1840s he was a major proponent in the use of Fresnel lenses in lighthouses. In 1838 Brewster became principal of the United College of Saint Salvator and Saint Leonard of the University of Saint Andrews, and in 1859 he became principal of the University of Edinburgh.

Brewster's Angle and Polarized Light

When considering the incidence of non-polarized light on a flat insulating surface, there is a unique angle at which the reflected light waves are all polarized into a single plane. This angle is commonly referred to as Brewster's angle and can be easily calculated using the following equation for a beam of light traveling through air:

$$n = \sin(\theta_i) / \sin(\theta_r) = \sin(\theta_i) / \sin(\theta_{90-i}) = \tan(\theta_i)$$

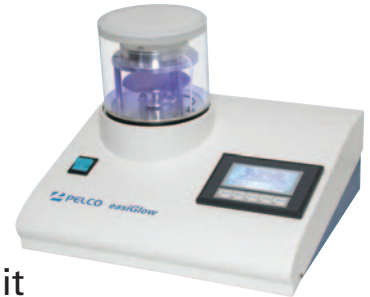
where n is the refractive index of the medium from which the light is reflected, θ_i is the angle of incidence, and θ_r is the angle of refraction. By examining the equation, it becomes

Preparation Equipment and Microscopy Supplies

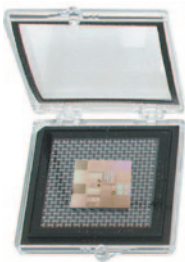
The single source for All your microscopy supplies and specimen preparation equipment.



- Vacuum Coating Systems
- Calibration Standards
- PELCO® easiGlow™ Glow Discharge Unit
- SEM Sample Holders and Mounts
- Silicon Nitride TEM Membranes
- PELCO BioWave Pro® Tissue Processor
- TEM Support Films



- AFM Supplies
- Quality Laboratory Tweezers
- Vacuum Pick-up Systems
- Digital Stereo Microscopes
- Conductive Adhesives
- FIB Supplies



Complete line of compact Cressington EM Sample Coaters.

TED PELLA, INC.
Microscopy Products for Science and Industry

sales@tedpella.com

800-237-3526

www.tedpella.com

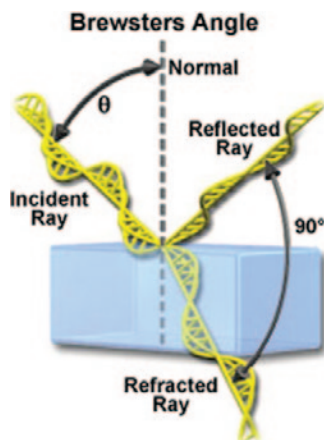


Figure 1.

obvious that the refractive index of an unknown specimen can be determined by the Brewster angle. This feature is particularly useful in the case of opaque materials that have high absorption coefficients for transmitted light, rendering the usual Snell's law formula inapplicable. Determining the amount of polarization through reflection techniques also eases the search for the polarizing axis of a sheet of polarizing film that is not marked.

The principle behind Brewster's angle is illustrated Figure 1 for a single ray of light reflecting from the flat surface of a transparent medium having a higher refractive index than air. The incident ray is drawn with only two electric vector vibration planes but is intended to represent light having vibrations in all planes perpendicular to the direction of propagation. When the beam arrives on the surface at a critical angle (Brewster's angle, represented by the variable θ in Figure 1), the polarization degree of the reflected beam is 100 percent, with the orientation of the electric vectors lying perpendicular to the plane of incidence and parallel to the

reflected surface. The incidence plane is defined by the incident, refracted, and reflected waves. The refracted ray is oriented at a 90-degree angle from the reflected ray and is only partially polarized.

For water (refractive index of 1.333), glass (refractive index of 1.515), and diamond (refractive index of 2.417), the critical (Brewster) angles are 53, 57, and 67.5 degrees, respectively. Light reflected from a highway surface at the Brewster angle often produces annoying and distracting glare, which can be demonstrated quite easily by viewing the distant part of a highway or the surface of a swimming pool on a hot, sunny day. Modern lasers commonly take advantage of Brewster's angle to produce linearly polarized light from reflections at the mirrored surfaces positioned near the ends of the laser cavity.

Interactive Java Tutorial

<http://micro.magnet.fsu.edu/primer/java/polarizedlight/brewster/index.html>

Brewster's Angle Demo. A common source of polarized light is that reflected from a dielectric medium such as a window pane, sheet of paper, or a highway on a sunny day. This tutorial demonstrates the polarization effect on light reflected at a specific angle (the Brewster angle) from a transparent medium. Adjustable parameters include the incident beam wavelength, refractive index of the dielectric medium, and the rotation angle from which the tutorial is viewed by the visitor.

MT



lumencor®

a powerful, white-light, solid-state illuminator

**why buy a lamp
when you can have a light engine?**

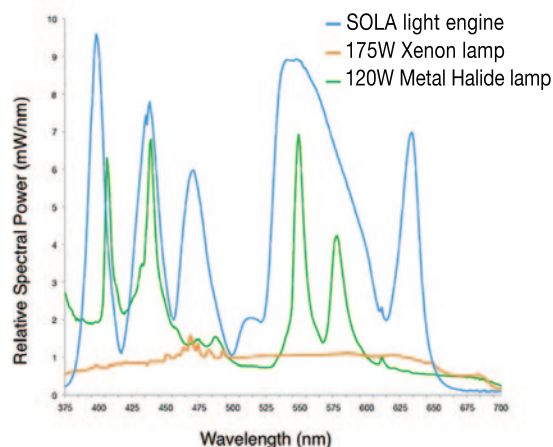


SOLA light engine™

Solid State Sources, the Power of an Arc Lamp and

- Powerful, stable white light
- Minimal heat generation
- Illumination uniformity
- Short warm-up time
- Millisecond switching times
- Long life > 15,000 usable hours
- Off-the-shelf configurations
- Use with any microscopy software in the marketplace
- Couples to all major brands of microscope via 3mm LLG
- Integrates with existing filter cubes and hardware configurations

specific outputs are a function of instrument parameters - results will vary



Lumencor, Inc 14964 NW Greenbrier Parkway, Beaverton, OR 97006 USA T 503-213-4269 www.lumencor.com

The SPI Supplies Family of Instruments



SPI-MODULE™
Sputter/Carbon Coater Module



PlasmaPrep III™ Plasma Etcher
with PPIII Process Controller



SPI-Vacu Prep II™
Turbo Pump Evaporation System



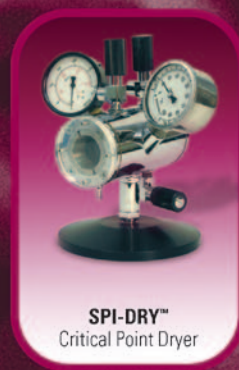
Gentle Mill™
Ion Milling System



PlasmaPrep X™
Parallel Plate Plasma Etcher



Osmium Plasma Coaters
for FESEM Applications



SPI-DRY™
Critical Point Dryer



PlasmaPrep III™ Solid State
Plasma Cleaner for cleaning TEM holders

100nm

Excellence in sample preparation is just a click away.
2spi.com

Your results will never be better than your sample preparation.
See how SPI Supplies can help you deliver the highest quality results for all your SEM/EDS, TEM and FESEM applications.



SPI Supplies Division of **STRUCTURE PROBE, Inc.**

P.O. Box 656 • West Chester, PA 19381-0656 USA
Phone: 1-610-436-5400 • 1-800-2424-SPI (USA and Canada) • Fax: 1-610-436-5755 • 2spi.com • E-mail: sales@2spi.com

