

Carl Zeiss NTS, LLC

Tel: 978-826-1500
Email: info-usa@nts.zeiss.com
www.zeiss.com/nts



Auriga 60

APPLICATIONS: Life Sciences, Materials Science, Semiconductors, Geology, 3D Imaging

FEATURES: • 6-inch stage vacuum chamber • 23 free accessory ports • Dedicated cryogenic transfer port • Safeguarded upgrade path • Fully equipped FIB-SEM

www.smt.zeiss.com/auriga60ekvsmt



EVO HD

APPLICATIONS: Zoology, Nano-engineering, Materials Science, Microbiology

FEATURES: • Unmatched low-kV resolution • Imaging of wet specimens at up to 3000 Pa • Intuitive operation for novices and experts alike • Detector upgrades from large portfolio

www.smt.zeiss.com/evohd



ORION PLUS

APPLICATIONS: Image charging specimens, Nano pore milling, Graphene Nano-Ribbon Patterning, Life Sciences, Semiconductors

FEATURES: • Unrivalled surface sensitivity • High precision nanofabrication possibilities • Innovative analysis functionality • Unique helium-ion technology

www.smt.zeiss.com/orion

Diatome U.S.

Tel: 215-412-8390
Fax: 215-412-8450
Email: sgkcck@aol.com
www.emsdiasum.com



Cryo Immuno

The first cryo knife with a diamond platform and 35° cutting angle that leads to a considerable reduction in mechanical stresses and therefore to improved structure preservation in sucrose-protected samples.

Electron Microscopy Sciences

Tel: 215-412-8400
E-mail: stacie@ems-secure.com
www.emsdiasum.com



EMS-002 Cryo Workstation

The EMS-002 Cryo Workstation is a complete ultra rapid freezing system that captures rapid events and labile structures that are not seen in chemically fixed materials.

Hamamatsu Corporation **HAMAMATSU**

PHOTON IS OUR BUSINESS

Tel: 908-231-0960
Email: lkohyama@hamamatsu.com
www.sales.hamamatsu.com



ORCA-Flash2.8 Scientific Camera

APPLICATIONS: DIC Microscopy, Physiology, FISH, Super Resolution Imaging, TIRF Microscopy

FEATURES: • 2.8 megapixels • 3.63 μm pixel size • 45 fps • Low readout noise • Wide FOV

www.sales.hamamatsu.com/assets/pdf/hpspdf/e_orcaFlashE01.pdf



ORCA-R2 Cooled CCD Camera

APPLICATIONS: Fluorescence Microscopy, TIRF Microscopy, Ratio Imaging, Live-Cell Imaging, Spinning Disk Confocal

FEATURES: • 1344 × 1024 pixels • 6.45 μm pixel size • Air/water deep cooling • 16.2 fps • High sensitivity in red region

www.sales.hamamatsu.com/assets/pdf/hpspdf/e_orcar2.pdf



ORCA-D2 Dual-CCD Camera

APPLICATIONS: FRET, Ratio Imaging, Dual-Wavelength Imaging, FISH, TIRF Microscopy

FEATURES: • 1280 × 960 pixels • 11.2 fps • Easy setup • Multifocal point imaging • Rapid filter changes

www.sales.hamamatsu.com/assets/pdf/hpspdf/e_orcad2.pdf



Imagem EMCCD Cameras

APPLICATIONS: Single Molecule Imaging, Super Resolution Imaging, TIRF Microscopy, Live-Cell Imaging, Spinning Disk Confocal

FEATURES: • 512 × 512 pixels • 1024 × 1024 pixels • 32 fps • Sensitive back-thinned image sensor • Excellent temperature stability

www.sales.hamamatsu.com/assets/pdf/hpspdf/e_c910013.pdf

Hysitron, Inc.

Tel: 952-835-6366
Email: info@hysitron.com
www.hysitron.com



HYSITRON™

PI 95 TEM PicoIndenter

APPLICATIONS: Materials Science, Material Characterization, Nano Science, TEM, Semiconductors

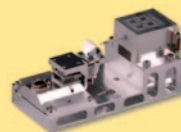


FEATURES: • Quantitative load and displacement measurements • Synchronized nanomechanical data and TEM imaging • Interchangeable diamond probes of a variety of geometries • Available heating stage • Electrical contact resistance measurements • Optional interchangeable tensile stage

www.hysitron.com/products/pi-series/pi-95-tem-picoindenter

PI 85 SEM PicoIndenter

APPLICATIONS: Materials Science, Material Characterization, Nano Science, SEM, Semiconductors



FEATURES: • Quantitative load and displacement measurements • Sub-nanometer displacement noise floor • <200 nN force noise floor • Can easily be inserted into and removed from SEM/FIB chamber • Interchangeable diamond probes of a variety of geometries • Accurate sample positioning, with mm range and nm sensitivity • Optional interchangeable tensile stage

www.hysitron.com/products/pi-series/pi-85-sem-picoindenter

IXRF Systems, Inc.

Tel: 281-286-6485
Email: info@ixrfsystems.com
www.ixrfsystems.com



Iridium Ultra Microanalysis Systems

APPLICATIONS: EDS Microanalysis Systems for SEM X-ray Analysis-Quantitative Analysis-Digital Imaging, X-ray Mapping, Particle Analysis, Advanced Stage Automation, Stitched X-ray Mapping-Stitched Imaging (whole sample stub)-Integrated Micro-XRF, Multiple quantitative routines for each individual element

FEATURES: • Simple to advanced EDS analysis • Digital Image Feature analysis and measurement software suite included • Spectacular X-ray mapping features • High throughput for high speed X-ray mapping • Small compact system for simple maintenance



EDS Detectors

APPLICATIONS: SEM High Speed Elemental X-ray Mapping, All SEM applications, Custom geometries and port configurations

FEATURES: • Premium resolution SDD detectors • Premium Si-Li Detectors • Variety of sizes (10 mm, 30 mm, 50 mm) • The very best in low energy peak performance • Various resolutions available



Micro-XRF in the SEM

APPLICATIONS: See all the elements in your sample at the ppm level, 10 times the sensitivity of EDS, Geologicals, Material Science, Thin-film Thickness, Trace Alloy Analysis, SN Whisker growth, Forensics, Manufacturing production control

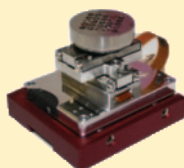
FEATURES: • Micro-XRF systems inside the SEM-Quantitative XRF Analysis • ppm trace elements in standard SEM samples • Micro-XRF Stage Mapping at the ppm level • Combined E-Beam and XRF Analysis simultaneously on the same sample area



Micro Ultra Fast "Super Stage"

APPLICATIONS: High speed EDS analysis, High speed image and X-ray map stitching, Ultra fast particle analysis, Stage automation for manual SEM stages

FEATURES: • Piezo substage with no backlash correction • 30 mm per second travel speeds • Fully integrated to EDS software features • Joystick controller with variable speed settings • 0.5 micron resolution • 25 mm to 300 mm travel distances



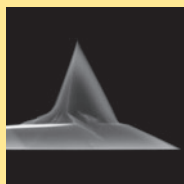
K-TEK Nanotechnology

Tel: 800-880-0172
Email: sales@kteknano.com
www.kteknano.com



AFM Cantilevers and Calibration Gratings

APPLICATIONS: K-TEK Nanotechnology—Your source for AFM cantilevers, specialty tips, whisker probes, calibration gratings, NSOM, test samples, AFM supplies and HOPG



Leica Microsystems

Tel: 800-248-0123
Email: yourimage@leica-microsystems.com
www.leica-microsystems.com



Leica EM UC7 Ultramicrotome

APPLICATIONS: Life Science, Materials Science, Ultramicrotomy, Room Temperature or Cryo Sectioning, Precise Sample Preparation

FEATURES: • Easily prepare semi/ultrathin sections • Creates perfect, smooth surfaces • For biological and industrial samples • Prepare for TEM/SEM/AFM/LM examination • Combines ergonomic design/innovative technology



Leica EM GP Automatic Plunge Freezing with Bare Grid Technique

APPLICATIONS: Life Science, Materials Science, Automatic Plunge Freezing, Bare Grid Technique, Reproducible Sample Preparation

FEATURES: • Prepares vitrified fluid samples for Cryo-TEM • Prepares extremely thin samples for Cryo-TEM • Utilizes the bare grid technique • Plunge freeze samples on EM grids • Sapphire discs also



Leica HPM100 High Pressure Freezer

APPLICATIONS: Life Science, Materials Science, Cryofixation, High-pressure Freezing, Excellent Freezing Results

FEATURES: • High Pressure Freezer for Cryofixation • Biological and Industrial Samples • Vitrifies samples up to 200 µm thick • Fast sample loading • Automatic bake-out cycle



Media Cybernetics

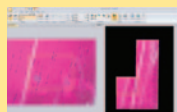
Tel: 301-495-3305
Email: info@mediacy.com
www.mediacy.com



Image-Pro Plus — Image Processing, Enhancement, and Analysis Software

APPLICATIONS: Fluorescence microscopy, Pathology, Cytometry, Forensic analysis, Industrial inspection

FEATURES: • Count and classify objects • Automated microscope control and multi-channel acquisition • Live tiling and extended depth of field • 3D rendering and measurements • Track moving objects

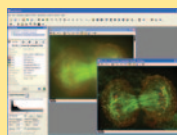


www.mediacy.com/pdfs/AutoDeblur_AutoVisualize.pdf

AutoQuant — Image Deconvolution and 3D Visualization Software

APPLICATIONS: Fluorescence microscopy, Confocal microscopy, FRET, DIC, Life science & industrial imaging

FEATURES: • 2D and 3D blind deconvolution • 3D visualization • Faster multi-core processor distributing • New file format support • New 3D blind confocal algorithm



www.mediacy.com/index.aspx?page=AutoQuant

Minitool, Inc.

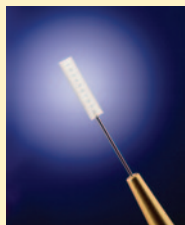
Tel: 408-395-1585
Email: rschaller@minitoolinc.com
www.minitoolinc.com



Minitool Precision Micro Tools

APPLICATIONS: Microscopy, Micro-Biology, Medical Research, Micro Biochemistry, Research and Development

FEATURES: • Realistically proportioned micro instruments in tip diameters of .025 mm (.001 in.) to 1.0 mm (0.40 in.) • 32 tools such as micro gravers, chisels, knives, mirrors, scribes, and micro rulers • Made of finest surgical stainless steel, high speed steel, micro-grain carbide, and tungsten • Interchangeable tool handle • Available in 5 micro sizes



Nanonics Imaging Ltd.

Tel: +972-2-6789-573
Email: info@nanonics.co.il
www.nanonics.co.il



The Hydra™

MultiProbe BioAFM/NSOM with upright/inverted/dual optical microscope operation; water/oil immersion objectives; ultrasensitive force/optical spectroscopy (Fluorescence/Raman) with near-field optics and live cell bioimaging

APPLICATIONS: Study biological samples on-line with optics & SPM samples on non-transparent substrates; Image optically and with SPM highly scattering samples such as textiles, fibers, paper, paints and capsules; Single molecule studies on gold or other opaque substrates; Biosensors; Optically active materials and compounds

FEATURES: • The only BioSPM that permits independent and simultaneous multiprobe operation • Liquid cell without optical and mechanical constraints or interference • Z Range of 100 µm, unachievable with any other SPM • The only BioSPM that can integrate with any optical microscope: Upright, Inverted, Dual 4pi configurations, Raman/Confocal/DIC/NSOM • The only BioSPM that permits critically acclaimed tuning fork feedback in liquid



The Nanonics MultiView AFM-Raman Systems

Combining Raman/AFM transparently without compromise in performance or configurability; completely modular operation with standard upright, inverted, or even dual optical microscopes; all SPM modes fully integrated.

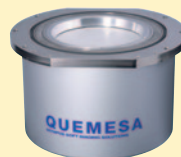
APPLICATIONS: TERS; Combined chemical and topographical characterization; Analysis of soft biological materials; Plasmonic and photonic characterization; Materials science, Quantum structures, Magnetic media, Optoelectronics, BioSciences

FEATURES: • First multiprobe simultaneous Raman/SPM system for integration with any Raman system in upright or inverted configurations, ability to upgrade existing systems • Super small working distance for working with water immersion objectives from above • 4 point resistivity and multiple probe thermal conductivity with Raman • Two-probe on-line nanoindentation • Two-probe tip-enhanced Raman Scattering (TERS) with TERS guaranteed



Olympus Soft Imaging Solutions GmbH

Tel: 0049 251 798 000
Email: Manfred.Kaessens@olympus-sis.com
www.soft-imaging.net



Quemesa – Fast high-resolution bottom-mounted 11 Megapixel TEM Camera

APPLICATIONS: Materials Sciences, Diffraction, HR-TEM, Life Sciences, Electron Tomography

FEATURES: • Up to 4008 × 2672 pixels • More than 12 fps @ binning 4 • Fibre optically coupled (2:1 Taper) • Dedicated water cooling system • 14-bit



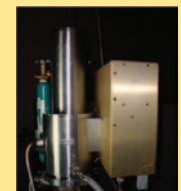
Veleta – 2k x 2k side-mounted TEM Camera

APPLICATIONS: Materials Sciences, Diffraction, Life Sciences, Electron Tomography, Pathology

FEATURES: • Up to 2048 × 2048 Pixel • More than 19 fps @ binning 4 • Peltier-cooling • 14-bit • Lens coupled

Oregon Physics LLC

Tel: 503-601-0041
Email: info@oregon-physics.com
www.oregon-physics.com



Hyperion Ion Source

APPLICATIONS: FIB, Materials Science, Life Sciences, Geology, Semiconductors, Mass Spectrometry

FEATURES: • High current ion source • Large volume plasma ion milling • High speed ion milling • Site specific specimen preparation • Large secondary ion yield for mass spectrometry



FIB Consumables and Replacement Parts

APPLICATIONS: FIB, Life Sciences, Materials Science, Geology, Semiconductors

FEATURES: • Custom FIB milling and machining • Precision milling and machining • Custom FIB apertures and aperture strips • High quality replacement parts • Beam acceptance apertures, extractors, and suppressors



Analytical Services

APPLICATIONS: Life Sciences, Materials Science, Geology, Semiconductors, FIB

FEATURES: • Large area plasma FIB cross-sectioning • Failure analysis • 3D tomography • Through-Si-Via quality control • Specimen preparation



Electron Source

APPLICATIONS: Life Sciences, Materials Science, Nanotechnology, Semiconductors, SEM

FEATURES: • Custom electron optics design and modeling • Imaging or e beam lithography • UHV designs • Specialty emitters • Compact sources

Oxford Instruments

Tel: 978-369-9933
Email: ruth.murray@oxinst.com
www.oxford-instruments.com



AZtec Microanalysis System

APPLICATIONS: Materials characterization, EDS, EBSD, Combined EDS and EBSD

FEATURES: • Outstanding accuracy 'out-of-the-box' • Automated acquisition and analysis • Integrated EBSD and EDS • Real-time acquisition analysis and reporting • Guided and custom operating modes

www.oxford-instruments.com/products/x-ray-microanalysis/software/Pages/software.aspx

X-Max SDD EDS Detector



APPLICATIONS: Acquisition of EDS data, SEM and TEM Microanalysis

FEATURES: • Large area EDS detector • 20 mm, 50 mm, and 80 mm options • Proven accuracy at high count rates • Resolution 124 eV guaranteed on EM

www.oxford-instruments.com/products/x-ray-microanalysis/eds/Pages/eds.aspx

HKL Nordlys EBSD Detector



APPLICATIONS: Materials characterization, Phase/texture analysis, Grain size/orientation, Crystallography, Microanalysis

FEATURES: • High speed EBSD • High sensitivity EBSD • Dynamic analysis • Combined EDS analysis

www.oxford-instruments.com/products/x-ray-microanalysis/ebd/Pages/software.aspx

Phenom World

Tel: +31 (0)40 259 73 60
Email: info@phenom-world.com
www.phenom-world.com



Phenom G2 pro desktop SEM



APPLICATIONS: Pharmaceutical, Semiconductor, Materials Science, Education, Forensics

FEATURES: • Magnification range 20-45,000x • Fast imaging results • Quality imaging non-conductive samples • Low energy consumption • Navigation camera for feature finding

www.phenom-world.com/electron-microscope/products/phenom-g2/pro

Photometrics

Tel: +1 520.889.9933
Email: info@photometrics.com
www.photometrics.com



Evolve™ EMCCD Camera



APPLICATIONS: *In vivo* imaging, Calcium imaging, Cell physiology, Live cell microscopy, Single molecule fluorescence

FEATURES: • Quant-View™ reads pixel values in electrons • Rapid-Cal™ accurate EM calibration process • Background Event Reduction Technology™ image correction • Black-Lock™ / Top-Lock intensity filtering tool • Vari-Bit™ improves image quality

www.photometrics.com/products/emccdcams/evolve/



CoolSNAP™ HQ2 CCD Camera

APPLICATIONS: Live-cell imaging, High-speed emission ratio imaging, Low-copy gene analysis and expression profiling, FRET, FRAP, FISH

FEATURES: • Turbo 1394 interface (FireWire) • 1392 x 1040 imaging pixels • 6.45 x 6.45 μm pixels • >60% quantum efficiency • Detector cooled to -30°C

www.photometrics.com/products/ccdcams/coolsnap_hq2.php



CoolSNAP™ ES2 CCD Camera

APPLICATIONS: Fixed-cell imaging, Immunofluorescence, Quantitative FRET, FRAP, FISH, Ion concentration imaging, Near-infrared (NIR) DIC

FEATURES: • Turbo 1394 interface (FireWire) • 1392 x 1040 imaging pixels • 6.45 x 6.45 μm pixels • >60% quantum efficiency • Detector cooled to 0°C • 20-MHz operation

www.photometrics.com/products/ccdcams/coolsnap_es2.php

QImaging

Tel: 604-530-5800
Email: info@qimaging.com
www.qimaging.com



Rolera™ EM-C² EMCCD Camera



APPLICATIONS: Live Cell Imaging, Spinning Disc Confocal Microscopy, Fluorescent Protein Imaging, FRAP, TIRF

FEATURES: • Easy-EM™ automatically sets optimal EM Gain • >100 frames per second cell imaging • 34.2 full frames per second • Low noise • High speed dynamic range

www.qimaging.com/products/cameras/scientific/rolera-emc2.php

EXi Aqua™ Bio-Imaging Camera

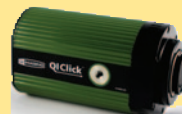


APPLICATIONS: Immuno-fluorescence, High-resolution color imaging, Fluorescent protein imaging, NIR (Near Infrared), Cell trafficking and signaling, Neuroscience imaging

FEATURES: • High sensitivity • Active cooling • Low read noise • High quantum efficiency • 6.45 micron pixels

www.qimaging.com/products/cameras/scientific/exi_aqua.php

QIClick™ CCD Camera



APPLICATIONS: Bright-field, phase-contrast, and dark-field microscopy; Immuno-fluorescence microscopy; Green fluorescent protein (GFP); FISH; DNA analysis

FEATURES: • 392 x 1040 pixels • 6.45 μm x 6.45 μm • 2/3" optical format • Sensor readout noise 8e- • Dark current 1.5e/p/s

www.qimaging.com/products/cameras/scientific/qi-click.php

SPI Supplies

Tel: 610-436-5400
Email: sales@2spi.com
URL: www.2spi.com



Vacu Prep™ II

The SPI Supplies Vacu Prep™ II is a fast, clean, high vacuum bench top evaporator with simple automated operation for evaporation or sputtering.



Plasma Prep™ III

SPI Supplies Plasma Prep™ III Etcher/Asher uses low temperature dry plasma processing to remove contamination and organic matrix material from a wide variety of SEM and TEM specimens.



Osmium Plasma Coaters

Osmium Plasma Coaters produce a thin (1 nm) layer of osmium with a virtually grain-less conductive coating on samples for high resolution FESEM systems.

Sutter Instrument

Tel: 415-883-0128
Email: info@sutter.com
www.sutter.com



SmartShutter™

APPLICATIONS: Shuttering, Fluorescence Microscopy, Life Sciences, Imaging Hardware

FEATURES: • Life tested to 100 million cycles • Complete opening time 8 msec from trigger • Select partial opening function for neutral density capability • "Soft" mode provides minimum vibration • Stand alone, or use with Sutter filter wheel



Lambda LS

APPLICATIONS: Microscope Illumination, Fluorescence Microscopy, Life Sciences, Imaging Hardware, OEM Illumination

FEATURES: • Pre-aligned bulb eliminates common focusing problems • Equipped with cold mirror to protect down stream optical components • Easily coupled to most microscopes • Modular construction allows use of optional liquid light guide • Accommodates Sutter filter wheels or SmartShutter™ within cabinet



Lambda XL

APPLICATIONS: Microscope Illumination, Fluorescence Microscopy, Life Sciences, Imaging Hardware, OEM Illumination

FEATURES: • 10,000 hour expected lifetime for bulb • No high-voltage pulse • Highly stable output (less than ±1% fluctuations) • Built-in driver for Sutter filterwheel and SmartShutter • Low light loss through bulb life



Lambda DG-4 / DG-5 PLUS

APPLICATIONS: Fluorescence Microscopy, Ratio-metric Imaging, Wavelength Switching, Imaging Hardware, Life Sciences

FEATURES: • 0.5 msec switching between filters • Integrated light source and wavelength switching excitation system • Holds four or five interference filters and one neutral density filter • Light guide output provides uniform illumination • Direct computer control via parallel or serial interface



Lambda 10-3

APPLICATIONS: Fluorescence Microscopy, Ratio-metric Imaging, Wavelength Switching, Imaging Hardware, Life Sciences

FEATURES: • As fast as 40 msec between adjacent filters (10 position wheel) • As fast as 31 msec between adjacent filters (4 position wheel) • Can control up to 3 wheels and 2 shutters, or 2 wheels and 3 shutters • Compatible with SmartShutter™ stepper-motor controlled shutter • Controls a variety of 12, 25, 32, and 50 mm filterwheels



MPC-385 / MPC-325

APPLICATIONS: Life Sciences, Micromanipulation, Electrophysiology

FEATURES: • Single controller and ROE will run 2 stepper motor drive manipulators • User-friendly interface: single button access to all major functions • Accelerated mode for fast, manual manipulator movement • Definable 4th axis for coaxial pipette movement • Ultra-low drift, ultra-smooth movement

Technical Manufacturing Corporation

Tel: 800-542-9725/978-532-6330
Email: sales@techmfg.com
www.techmfg.com



STACIS® iX SEM-Base™ Vibration Cancellation Floor Platform

APPLICATIONS: Scanning electron microscopy, Life sciences, Materials science, Semiconductors

FEATURES: • Active vibration cancellation starts below 1 Hz • Extended stroke piezoelectric actuators • Platform fits most commercial SEMs • Load capacity 900 to 2,500 pounds • Compatible with internal tool vibration isolation

www.techmfg.com/products/floorplatforms/stacis_sem_base.html



Mag-NetX™ Magnetic Field Cancellation System

APPLICATIONS: Scanning electron microscopy, Transmission electron microscopy, Electron beam lithography, Ion beam lithography

FEATURES: • Dedicated controller with automated calibration • AC and DC magnetic sensor • Helmholtz coils in structural casing • Floor, wall, or tool mounting • Continuous monitoring

www.techmfg.com/products/magnetic/magnetx.htm

Ted Pella, Inc.

Tel: 800-237-3526
Email: sales@tedpella.com
www.tedpella.com



High Resolution FE-SEM Sputter Coaters

APPLICATIONS: Life Sciences, Materials Science, Semiconductors, SEM

FEATURES: • Grain-free, ultra-thin uniform and conform coating • Wide choice of operating parameters to accommodate all sample types • Purpose designed with optimized vacuum pumping system • Includes Rotary-Planetary-Tilting stage and high resolution thickness controller • Easy to operate with fast cycle times



www.tedpella.com/crossing_html/crs208hr.html

The PELCO BioWave® Pro Microwave Tissue Processor

APPLICATIONS: Life Sciences, Fluorescence Microscopy, TEM, Image Analysis

FEATURES: • Superior Microwave Processing Control • Precision Sample Temperature Control • Unrivaled Application Flexibility • Consistent Quality Results • True ease of operation



www.tedpella.com/microwave_html/BioWave_Pro.htm#biowave_pro

PELCO easiGlow™

APPLICATIONS: Life Sciences, Materials Science, TEM, Tomography

FEATURES: • Precise and easy vacuum settings • Short cycle times • Consistent results • Intuitive touch screen for control and display • Supports hydrophilic/hydrophobic and negative/positive modes



www.tedpella.com/easiglow_html/91000.htm

PELCO® Silicon Nitride Support Films

APPLICATIONS: TEM, STEM, Thin Film Research, Life Sciences, Material Sciences

FEATURES: • Debris free and resilient films • Available membrane thickness of 8, 15, 50, and 200 nm • 3 mm diameter frame fits perfect in TEM holders • EasyGrip™ edges for improved handling



www.tedpella.com/grids_html/silicon-nitride.htm#_21500_10

PELCO® Modular SEM Sample Holders

APPLICATIONS: SEM FESEM, FIB/FIB/SEM

FEATURES: • Stage adapters for all major SEM brands • Large selection of effective and practical sample holders • Can be used on any SEM platform



www.tedpella.com/SEMmod_html/SEMmod3.htm#anchor907543

Thermo Fisher Scientific

Tel: 800-532-4752
Email: carl.millholland@thermofisher.com
www.thermoscientific.com/microanalysis



Thermo Scientific NORAN System 7 X-ray Microanalysis

APPLICATIONS: Spectral analysis, Point & shoot, Spectral imaging, Component analysis of spectral images

FEATURES: • Spectral Imaging X-ray Microanalysis • Automatic Quantitative Mapping • Integrated Electron Imaging and X-ray Analysis • Multivariate Statistical Analysis Software • Compositional Distribution Mapping Software



www.thermoscientific.com/noran

Thermo Scientific MagnaRay WDS Spectrometer

APPLICATIONS: High sensitivity, Light-element detection, Overlapping peaks, High peak-to-background, High spatial resolution

FEATURES: • Direct-drive mechanisms on crystals and counter • Optics for low voltage/beam currents • WDS assisted qualitative analysis • WDS quantitative analysis



www.thermoscientific.com/microanalysis

Thermo Scientific QuasOr

APPLICATIONS: Nanostructural characterization of crystalline structures

FEATURES: • Crystal orientation mapping • Texture analysis • Simultaneous EBSD, EDS, and WDS • Point and shoot analysis



www.thermoscientific.com/microanalysis

Tousimis Research Corporation

Tel: 301-881-2450
Email: trc@tousimis.com
www.tousimis.com



Tousimis® SAMDRI® Critical Point Dryers

APPLICATIONS: Bio SEM Sample Preparation, MEMS, Aero-Gel Drying, Organic Metal Framework, Nano Particles

FEATURES: • Over 35 Years of CPD Innovations • Advanced Manual and Automatic Models • Up to 8 in. Chamber Sizes • Minimal Facility Requirements • Free Lifetime Global Tech Support



www.tousimis.com/critical_point_dryers/critical_point_dryer.html

X-Cite by Lumen Dynamics

Tel: 800-668-8752
Email: X-Cite@LDGI.com
www.LDGI-XCite.com



X-Cite® Light Sources



X-Cite® light sources for fluorescence microscopy offer a wide range of features sets and accessories to optimize illumination performance, maximize convenience, and simplify maintenance.

FEATURES: • Long-life pre-aligned lamps • Optimized optics for uniform illumination with all major microscope brands • Bright, stable output with intensity adjustments • High speed internal shutter • Calibration and power measurement options

XEI Scientific, Inc.

Tel: 650-369-0133
Email: Sales@Evactron.com
www.Evactron.com



Evactron 25 DeContaminator

APPLICATIONS: SEM, FIB, and vacuum chamber remote plasma cleaner, Carbon removal from vacuum chamber

FEATURES: Uses air to make oxygen radicals • Preset cleaning recipes • Available computer interface • Simple operation • Table top controller

www.evactron.com/images/files/e25.pdf

Evactron® 45 and 40 Decontaminator



APPLICATIONS: SEM, FIB, and vacuum chamber remote plasma cleaner, Carbon removal from vacuum chamber

FEATURES: • Uses air preset cleaning recipes • Available computer interface • Simple operation • Rack mounted controller

www.evactron.com/images/files/e4045.pdf

Evactron® Plasma Radical Sources



APPLICATIONS: Make oxygen radicals from air or oxygen gas, Make hydrogen radicals from H₂, Plasma light sources

FEATURES: • A variety of sizes and appearance options • Built-in pressure measurement • Built-in gas flow control • Compact size • Easy mounting

www.evactron.com/product

Evactron® Softclean™ Chamber



APPLICATIONS: Desk top plasma cleaning of specimens, Uses one PRS for SEM and specimen cleaning, Cleaning without sputter etching

FEATURES: • 3 ports for TEM stage holders • Top opening chamber lid for SEM samples • RF shield built into lid • Includes vacuum cutoff valve • Uses air for cleaning gas

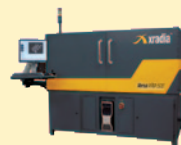
www.evactron.com/images/files/sc.pdf

Xradia, Inc.

Tel: 925-701-3600
Email: bropoulos@xradia.com
www.xradia.com



VersaXRM Family of X-ray Microscopes



APPLICATIONS: Semiconductor failure analysis, Hard and soft tissue research, Virtual core analysis, Crack propagation and porosity

FEATURES: • True submicron spatial resolution • Highest resolution at largest working distances • Nondestructive • *In situ* characterization • Industry-leading phase and absorption contrast

www.xradia.com/products/versaxrm-500.php

UltraXRM Family of X-ray Microscopes



APPLICATIONS: Life science research, Semiconductor package failure analysis, Materials science research, Oil & gas drilling studies

FEATURES: • <50 nm level 3D X-ray imaging • Synchrotron-like capabilities in a lab • Large working distance • Automated image alignment • Absorption and Zernike phase contrast

www.xradia.com/products/ultraxrm-l200.php

CoolLED pE-100

LED Illumination for Fluorescence

NEW

Ideal for Clinical Screening

- Saves money
- Instant On/Off
- 0-100% intensity control
- No More Mercury!

Replace your Mercury lamp with a pE-100. Ideal for screening with Acridine Orange, Auramine, FITC, Calcofluor White and many more.

For more information on how the can work for you, contact us now at:
info@CoolLED.com
+44 (0) 1264 320 989 (UK) or 1-800-877-0128 (USA Toll Free)
www.CoolLED.com
www.youtube.com/coolled2

LED product