

# Evolved massive stars in W33 and in GMC G23.3–0.3

M. Messineo<sup>1</sup>, J. S. Clark<sup>2</sup>, D. F. Figer<sup>3</sup>, K. M. Menten<sup>1</sup>, R.-P. Kudritzki<sup>4</sup>, F. Najarro<sup>5</sup>, R. M. Rich<sup>6</sup>, V. D. Ivanov<sup>7</sup>, E. Valenti<sup>7</sup>, C. Trombly<sup>3</sup>, C.-H. R. Chen<sup>1</sup>, B. Davies<sup>8</sup> and J. W. MacKenty<sup>9</sup>

<sup>1</sup>Max-Planck-Institut für Radioastronomie, Auf dem Hügel 69, D-53121 Bonn, Germany, email: [messineo@mpifr-bonn.mpg.de](mailto:messineo@mpifr-bonn.mpg.de)

<sup>2</sup>Department of Physics and Astronomy, The Open University, Walton Hall, Milton Keynes, MK7 6AA, UK

<sup>3</sup>Center for Detectors, Rochester Institute of Technology, 54 Memorial Drive, Rochester, NY 14623, USA

<sup>4</sup>Institute for Astronomy, University of Hawaii, 2680 Woodlawn Drive, Honolulu, HI 96822, USA

<sup>5</sup>Centro de Astrobiología (CSIC-INTA), Ctra. de Torrejón a Ajalvir km4, E-28850, Torrejón de Ardoz, Madrid, Spain

<sup>6</sup>Physics and Astronomy Building, 430 Portola Plaza, Box 951547, Department of Physics and Astronomy, University of California, Los Angeles, CA 90095-1547, USA

<sup>7</sup>European Southern Observatory, Karl-Schwarzschild-Strasse 2, D-85748 Garching bei München, Germany

<sup>8</sup>Astrophysics Research Institute, Liverpool John Moores University, Twelve Quays House, Egerton Wharf, Birkenhead, Wirral. CH41 1LD, UK

<sup>9</sup>Space Telescope Science Institute, 3700 San Martin Drive, Baltimore, MD, 21218, USA.

**Abstract.** We conducted infrared spectroscopic observations of bright stars in the direction of the molecular clouds W33 and GMC G23.3–0.3. We compared stellar spectro-photometric distances with parallactic distances to these regions, and we were able to assess the association of the detected massive stars with these molecular complexes. The spatial and temporal distributions of the detected stars enabled us to locate sources of ionizing radiation and to gather precise information on the star formation history of these clouds. The studied clouds present different distributions of massive stars.

**Keywords.** infrared: stars stars: evolution - supergiants open clusters and associations: general ISM: clouds - ISM: supernova remnants

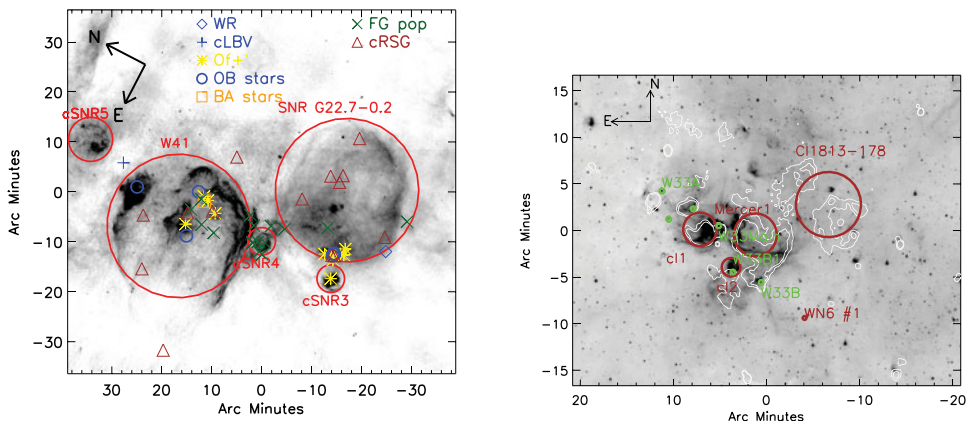
---

## 1. Introduction

Young massive stars and stellar clusters continuously form in the Galactic disk, generate bubbles and HII regions in molecular clouds, and subsequently enrich the interstellar medium via winds and supernovae. We conducted an infrared survey for bright stars in the Galactic giant molecular clouds (GMCs) G23.3–0.3 and W33. A large number of extraordinary sub-clumps/clusters of massive stars were detected. The spatial and temporal distribution of these massive stars yielded information on the star formation history of these clouds.

## 2. GMC G23.3–0.3

The GMC G23.3–0.3, shown in Fig. 1, is located at the parallactic distance of 4.6 kpc (Brunthaler *et al.* 2009), and is remarkably rich in HII regions and supernova remnants



**Figure 1.** *Left:* 20 cm emission from MAGPIS of GMC G23.3–0.3 centred at RA  $18^{\circ}33'50''.96$  and Dec.  $-08^{\circ}55'34''.9$ . Detected massive stars are indicated (e.g., RSGs with triangles, early-type stars with diamonds, plus, and circles). SNRs are indicated with red circles. *Right:* GLIMPSE 8  $\mu$ m image of W33, centred at RA  $18^{\circ}13'51''.88$  and Dec.  $-17^{\circ}56'17''.5$ , with contours of 90 cm emission from MAGPIS. Prestellar cores are in green (Immer *et al.* 2014), while candidate stellar clusters are in red.

(SNRs) (Messineo *et al.* 2010, 2014). We discovered a dozen massive O-type stars, one candidate luminous blue variable, and several red supergiants (RSGs). The O-type stars have masses from 25 to 50  $M_{\odot}$  and ages of a few million years, while the RSGs belong to a burst that occurred 20–30 Myr ago. GMC G23.3–0.3 has had one of the longest known history of star formation. We detected massive stars in the cores of SNR W41 and SNR G22.7–0.2 (Fig. 1).

### 3. W33

The W33 complex (Fig. 1) is located on the Galactic plane at about  $12^{\circ}9$  of longitude and at the parallactic distance of 2.4 kpc (Immer *et al.* 2013). We spectroscopically detected a few evolved O-type stars and one Wolf-Rayet star, but none of the late-type objects has the luminosity of a RSG star. Several dense molecular cores that may harbor proto clusters were recently discovered on the east side of the cloud (Immer *et al.* 2014). We were able to identify episodes of sequential star formation: evolved massive stars/clusters that are triggering these new condensations (Messineo *et al.* 2015). Therefore, W33 is characterized by discrete sources and has had at least 3–5 Myr of star formation, which is now propagating from west to east. The massive stellar cluster Cl1813–178 (Messineo *et al.* 2011) is located behind the W33 complex at a distance of about 4.8 kpc.

### References

- Brunthaler, A., Reid, M. J., Menten, K. M., Zheng, X. W., Moscadelli, L., & Xu, Y. 2009, *ApJ*, 693, 424
- Immer, K., Reid, M. J., Menten, K. M., Brunthaler, A., & Dame, T. M. 2013, *A&A*, 553A, 117
- Immer, K., Galván-Madrid, R., König, C., Liu, H. B., & Menten, K. M. 2014, *A&A*, 572A, 63
- Messineo, M., Figer, D. F., Davies, B., Kudritzki, R. P., Rich, R. M., MacKenty, J., & Trombley, C. 2010, *ApJ*, 708, 1241
- Messineo, M., Menten, K. M., Figer, D. F., Davies, B., Clark, J. S., Ivanov, V. D., Kudritzki, R.-P., Rich, R. M., MacKenty, J. W., & Trombley, C. 2014, *A&A*, 569A, 20
- Messineo, M., Davies, B., Figer, D. F., Kudritzki, R. P., Valenti, E., Trombley, C., Najarro, F., & Rich, R. M. 2011, *ApJ*, 733, 41
- Messineo, M., Clark J. S., Figer, D. F., Kudritzki, R.-P., Najarro, F., Rich, R. M., Menten K. M., Ivanov, V. D., Valenti, E., Trombley, C., Chen C.-H. R., & Davies, B. 2015, *ApJ*, 805, 110