

A pragmatic trial of a group intervention in senior housing communities to increase resilience

Emily B. H. Treichler,^{1,2,3,†} Danielle Glorioso,^{1,2,†} Ellen E. Lee,^{1,2,4} Tsung-Chin Wu,^{2,5} Xin M. Tu,^{1,2,6} Rebecca Daly,^{1,2} Catherine O'Brien,⁷ Jennifer L. Smith,^{7,†} and Dilip V. Jeste^{1,2,8,†}

¹Department of Psychiatry, University of California San Diego, La Jolla, San Diego, CA, USA

²Sam and Rose Stein Institute for Research on Aging, University of California San Diego, La Jolla, San Diego, CA, USA

³Mental Illness Research, Education, and Clinical Center (MIRECC), VA San Diego, San Diego, CA, USA

⁴VA San Diego Healthcare System, San Diego, CA, USA

⁵Department of Mathematics, University of California San Diego, La Jolla, San Diego, CA, USA

⁶Department of Family Medicine and Public Health, University of California San Diego, La Jolla, San Diego, CA, USA

⁷Mather Institute, Evanston, IL, USA

⁸Department of Neurosciences, University of California San Diego, La Jolla, San Diego, CA, USA

Abstract

Background: Aging is associated with numerous stressors that negatively impact older adults' well-being. Resilience improves ability to cope with stressors and can be enhanced in older adults. Senior housing communities are promising settings to deliver positive psychiatry interventions due to rising resident populations and potential impact of delivering interventions directly in the community. However, few intervention studies have been conducted in these communities. We present a pragmatic stepped-wedge trial of a novel psychological group intervention intended to improve resilience among older adults in senior housing communities.

Design: A pragmatic modified stepped-wedge trial design.

Setting: Five senior housing communities in three states in the US.

Participants: Eighty-nine adults over age 60 years residing in independent living sector of senior housing communities.

Intervention: Raise Your Resilience, a manualized 1-month group intervention that incorporated savoring, gratitude, and engagement in value-based activities, administered by unlicensed residential staff trained by researchers. There was a 1-month control period and a 3-month post-intervention follow-up.

Measurements: Validated self-report measures of resilience, perceived stress, well-being, and wisdom collected at months 0 (baseline), 1 (pre-intervention), 2 (post-intervention), and 5 (follow-up).

Results: Treatment adherence and satisfaction were high. Compared to the control period, perceived stress and wisdom improved from pre-intervention to post-intervention, while resilience improved from pre-intervention to follow-up. Effect sizes were small in this sample, which had relatively high baseline resilience. Physical and mental well-being did not improve significantly, and no significant moderators of change in resilience were identified.

Conclusion: This study demonstrates feasibility of conducting pragmatic intervention trials in senior housing communities. The intervention resulted in significant improvement in several measures despite ceiling effects. The study included several features that suggest high potential for its implementation and dissemination across similar communities nationally. Future studies are warranted, particularly in samples with lower baseline resilience or in assisted living facilities.

Key words: group therapy, health aging, psychosocial interventions, quality of life, resilience

Correspondence should be addressed to: Dilip V. Jeste, University of California San Diego, 9500 Gilman Drive, Mail Code #0664, La Jolla 92093-0664, San Diego, CA, USA. Phone + 858 534 4020. Email: djeste@ucsd.edu Received 13 Nov 2019; revision requested 25 Nov 2019; revised version received 05 Dec 2019; accepted 06 Dec 2019. First published online 05 February 2020.

†Emily B. H. Treichler and Danielle Glorioso are co-first authors and Jennifer L. Smith and Dilip V. Jeste are co-senior authors.

Older adults commonly experience stressors related to a decline in physical, cognitive, and functional abilities, loss of purpose and independence, bereavement, societal ageism, and financial hardships (Almeida *et al.*, 2011). Chronic stressors have

cascading effects on physical and mental outcomes, including worse overall well-being, increased depression, and greater physical disability and mobility limitation (Dautovich *et al.*, 2014; Frias and Whyne, 2015; Kulmala *et al.*, 2013). Stressful events increase the likelihood of chronic metabolic, pulmonary, and cardiovascular diseases (Scott *et al.*, 2013). These stressors are often unavoidable in modern Western societies, given the realities of aging, so identifying methods to enhance older adults' ability to manage stressors is essential.

Resilience is the process of adapting well in the face of adversity, trauma, loss, and other sources of stress (Ong *et al.*, 2009; Rutter, 2007). Resilience is a modestly heritable personality trait and is partially malleable (Chmitorz *et al.*, 2018; Johnston *et al.*, 2015). Resilience is associated with lower levels of anxiety, depression, and general psychological distress, and has a mediating effect on physical and mental health in people who have experienced trauma as children or adults, and those managing chronic health conditions (Hjemdal *et al.*, 2011; Mujeeb and Zubair, 2012; Stewart and Yuen, 2011; Wingo *et al.*, 2010). Resilience decreases perceived stress, and people who are less impacted emotionally by daily stressors have lower incidence of mood disorders 10 years later (Charles *et al.*, 2013), indicating the long-term value of pursuing methods of decreasing perceived stress.

Among older adults, high resilience has been shown to be a significant determinant of well-being, and is associated with lower levels of perceived stress as well as greater happiness, and better quality of life (Jeste *et al.*, 2013; Lavretsky, 2014; MacLeod *et al.*, 2016; Smith and Hollinger-Smith, 2015). Similarly, other constructs characterizing positive psychology and psychiatry (Jeste, 2018), including wisdom, optimism, personal growth, and happiness, positively impact well-being, mental health, and physical functioning among older adults (Depp *et al.*, 2014; Engel *et al.*, 2011; Jeste *et al.*, 2015; Laird *et al.*, 2019; Reichstadt *et al.*, 2010). Therefore, enhancing these outcomes may promote successful aging (Depp and Jeste, 2006; Reichstadt *et al.*, 2010). However, only about a third of the older adults score high on resilience measures (Hildon *et al.*, 2010; Jeste *et al.*, 2013), indicating that increasing resilience may be a promising strategy to enhance well-being and quality of life among older adults.

Existing literature on methods to improve resilience among older adults is limited. The only study we found was a pilot study examining the use of a 1-week savoring intervention, which reported that adults over age 60 years who completed the brief intervention with high fidelity (i.e. engaged in the intervention for at least 6 days, 60% of the sample) showed reduced depression and improved resilience

and happiness, unlike the other 40% participants, indicating that consistent engagement is important (Smith and Hanni, 2019). More broadly, a few interventions in older adults targeting related positive psychology/psychiatry domains have found evidence of benefit (Ho *et al.*, 2014; Killen and Macaskill, 2015; Meléndez Moral *et al.*, 2015).

The population of older adults living in senior housing communities is increasing (Jeste *et al.*, 2019; Jeste and Childers, 2017), presenting an important opportunity to improve physical and mental healthcare in these communities (Borson *et al.*, 2019; Guo and Castillo, 2012). Implementing positive prevention strategies in senior housing communities offers a method to assist older adults in maintaining health, well-being, and independence as they age (Dong, 2017; Guo and Castillo, 2012). However, we are aware of only two relevant studies, which examined a novel positive psychology intervention for older adults living in community centers or nursing homes in Hong Kong (Ho *et al.*, 2014) and a psychological fitness intervention in a retirement community (Short, 2012).

Therefore, our team developed a manualized psychological intervention, Raise Your Resilience (RYR), intended to improve resilience and related outcomes among older adults living in senior housing communities. We sought to design our trial based on the principles of pragmatic clinical trials (Mdege *et al.*, 2011; Patsopoulos, 2011). These are randomized controlled trials that focus on participants in real world, with few exclusion criteria, randomization at group rather than individual level, and administration of the intervention by unlicensed non-research staff. Development of RYR was driven by empirical literature including consistent findings that experience of positive emotions, savoring of positive experiences, and use of adaptive coping skills are associated with greater resilience among older adults (MacLeod *et al.*, 2016). This study assessed effects of RYR among older adults residing in independent living sector of five senior housing communities across three states. These individuals were expected to have relatively high resilience at baseline, though they still experienced a range of significant stressors. Our primary hypothesis was that older adults who participate in RYR would report higher levels of resilience and well-being and lower level of perceived stress at the end of the 1-month intervention. Exploratory aims included determining whether (a) the improvements in primary outcomes were maintained during the follow-up period; (b) RYR improved other positive psychiatry domains including wisdom, optimism, psychological growth, and happiness; and (c) baseline demographic variables, psychosocial measures, treatment adherence, and treatment satisfaction moderated changes in outcomes.

Methods

The Institutional Review Boards of the University of California San Diego and the Mather Institute approved this study. Every participant signed a written informed consent form.

Participants

Inclusion criteria were: an English-speaking individual over age 60 years who resided in independent living in one of the five senior living communities in suburban settings (Cardiff, CA; San Diego, CA; Evanston, IL; Wilmette, IL; and Tucson, AZ), and able to provide a written informed consent to participate. Exclusion criteria were: a diagnosis of dementia or any other serious or disabling illness that would prevent participation in the study. *A priori* power analyses determined that a sample of 90 participants would provide 90% power to detect a small to medium effect size (Cohen's d 0.2–0.5) with a two-sided $\alpha = 0.05$ (Cohen, 1988; Tu *et al.*, 2004). The recruited sample consisted of 89 participants with mean age of 84.9 ($SD = 7.0$) years. The sample was mostly female (77.5%) and almost entirely White (97.8%). There were no Hispanic/Latino participants. Half (50.6%) of the participants had completed at least some college, while an additional 44.9% had a postgraduate degree. Over half (58.4%) were widowed, 32.6% were currently married, 7.9% were divorced, and one participant had never married.

Participants were recruited from the specified senior housing communities through brief presentations and flyers. Selected staff members from each senior living community were trained in recruiting procedures including ethics guidelines. These staff contacted each potential participant to elicit interest in participating. Interested potential participants met with staff to complete the informed consent process and schedule baseline assessment.

Measures

In addition to demographic variables, participants completed a set of self-report measures. The first primary outcome, resilience, was measured using the 10-item Connor-Davidson Resilience Scale (CD-RISC; Campbell-Sills and Stein, 2007). The second primary outcome, well-being, was assessed using two measures: the 12-item Short-Form Health Survey (SF-12; Ware *et al.*, 1996), a measure of physical and mental well-being, and the Perceived Stress Scale (PSS; Cohen *et al.*, 1983). Positive psychosocial measures to examine our exploratory aim included the San Diego Wisdom Scale (SD-WISE; Thomas *et al.*, 2019); the Subjective Happiness Scale (Lyubomirsky and Lepper, 1999);

the Psychological Growth subscale of the Attitudes to Aging Questionnaire (Kavirajan *et al.*, 2011); and the Life Orientation Test – Revised (LOT-R; Glaesmer *et al.*, 2012). Treatment adherence was assessed by monitoring the number of RYR sessions attended, and number of daily diaries completed during the 31-day intervention period. Participants in a subset of sites were also asked to complete a 6-item measure of treatment satisfaction, which was developed specifically to assess satisfaction with RYR (e.g. relevance of content, usefulness of activities). Most measures were completed at months 0 (baseline), 1 (pre-intervention), 2 (post-intervention), and 5 (3-month post-intervention follow-up); treatment satisfaction was assessed at month 2.

Intervention

RYR included savoring, gratitude, and engagement in value-based activities to improve resilience. Group members were taught to savor by recording one event each day that made them feel happy and one accomplishment or activity that made them proud in a daily diary. Gratitude practices were incorporated because they are associated with improved physical and mental health (Jans-Beken *et al.*, 2019; Killen and Macaskill, 2015). Due to past findings that perceived age discrimination negatively impacts well-being and mental health *via* more negative perceptions of aging (Marquet *et al.*, 2018), RYR incorporated explicit discussion of the impact of age discrimination and associated stereotypes along with methods to fight those stereotypes and improve perceptions of aging. RYR was delivered in three 90-minute sessions at weeks 1, 2, and 4 by a trained residential facilitator, and focused on three positive psychology-oriented topics: aging as a time of continued growth and enjoyment; making small changes to increase positive emotions; and engagement in values-driven activities. At the beginning of RYR, participants set short-term individualized goals to make life more enjoyable and meaningful. The group facilitator assisted in identifying and encouraging concrete values-driven activities to achieve participants' short-term goals. At the end of 1-month RYR, the participants were encouraged to continue the daily diary during the 3-month follow-up period and beyond.

Procedure

This study used a modified stepped-wedge trial design, which is an alternative method of conducting cluster-randomized trials (Copas *et al.*, 2015; Hemming *et al.*, 2015; Woertman *et al.*, 2013). This approach allows for all participants to receive the intervention while still having data from a control

period to compare the intervention data to. Specifically, a modified stepped-wedge trial clusters intervention delivery at multiple time points. All trial clusters undergo a control period and control assessment completion. Each “cluster” was one RYR group, and start dates for each group were spread across five time points across 14 total months. Unlike a classical stepped-wedge design, start dates were not uniformly staggered; they were chosen based on the readiness of each site. The control period consisted of treatment as usual. Each group underwent baseline assessment at month 0, followed by pre-intervention assessment at month 1, post-intervention assessment at month 2, and follow-up assessment at month 5. Thus, the control period (month 0 to 1) under the modified stepped-wedge design had the same length as the intervention period (month 1 to 2) for all groups to minimize potential practice effect (Elman *et al.*, 2018).

There were nine RYR groups across the five sites with 6–12 participants per RYR group. Trained, unlicensed facilitators from each local senior housing community conducted the groups. These facilitators were trained in delivering the manual by research staff, before the trial was initiated. (The manual can be made available to interested readers on request.)

Analytic plan

Generalized estimating equations (GEE) were employed (Tang *et al.*, 2012) to examine changes in target variables over time. As GEE does not impose any mathematical distribution requirements such as normality for valid inference (type I error), it provides more robust estimates for a broader class of data distributions than alternatives such as the generalized linear mixed-effects models (Tang *et al.*, 2012; Zhang *et al.*, 2011). We also checked missing data mechanism and could not reject the missing completely random assumption (Tang *et al.*, 2012), which was not surprising given low rates of dropouts (i.e. 84.3% of participants had complete data). Thus, GEE provides valid inference for the current study.

Separate GEE models were used to identify changes in the primary outcome measures (i.e. CD-RISC, PSS, SF-12 Mental Well-being, and SF-12 Physical Well-being) during the intervention period (month 1 to month 2) and from pre-intervention (month 1) to follow-up (month 5). Changes during the intervention period (month 1 to month 2) were compared to changes during the control period (month 0 to month 1) to assess whether changes were attributable to the intervention. The same approach was repeated to identify

changes in the exploratory outcome variables during the same time periods.

Separate moderation models for each type of moderator (i.e. demographic, psychosocial, treatment adherence, and treatment satisfaction) were estimated using GEE, including interactions between potential moderators and time. Demographic variables included in the moderation analysis were age, sex, and marital status. Psychosocial variables included in the moderation analysis were baseline PSS, SD-WISE, SF-12 Mental Well-being, and SF-12 Physical Well-being scores. Treatment adherence variables included two objective measures – that is, number of sessions attended and number of daily diaries completed. Treatment satisfaction was measured via the total score of the satisfaction measure. Effect size was calculated using Cohen’s *d*, using the standard deviation of the change in scores by computing pooled standard deviations.

Results

The number of dropouts over the 5-month trial period was small ($n=9$, or 10%). The primary outcome, the CD-RISC score, did not change significantly during the intervention period (month 1–month 2) in comparison to the control period (month 0–month 1); however, it increased significantly from month 1 to month 5 (follow-up), *Estimate* = 1.052, *SE* = 0.454, $p = 0.021$, Cohen’s $d = 0.115$. The PSS score decreased significantly during the intervention period compared to the control period, *Estimate* = -1.705 , *SE* = 0.607, $p = 0.005$, Cohen’s $d = -0.192$. Please see Figures 1 and 2 for a depiction of CD-RISC and PSS, respectively, over time.

The SD-WISE total score increased significantly during the intervention period compared to the control period, *Estimate* = 0.112, *SE* = 0.038, $p = 0.007$, Cohen’s $d = 0.251$. Among SD-WISE subscales, Emotional Regulation ($p = 0.002$, Cohen’s $d = 0.208$) and Social Advising ($p = 0.042$, Cohen’s $d = 0.180$) improved during the intervention period compared to the control period, while Tolerance of Divergent Values approached significance over that period, $p = 0.060$, Cohen’s $d = 0.221$. The other SD-WISE subscales, Decisiveness, Insight, and Prosocial Behaviors, did not show significant changes, all $ps > 0.05$, Cohen’s $ds = |0.05–0.17|$. Table 1 includes SD-WISE total and subscale scores over time.

Changes in SF-12 Physical or Mental Well-being, CES-D Happiness subscale, Psychological Growth, and LOT-R scores did not show significant change during the intervention period or from

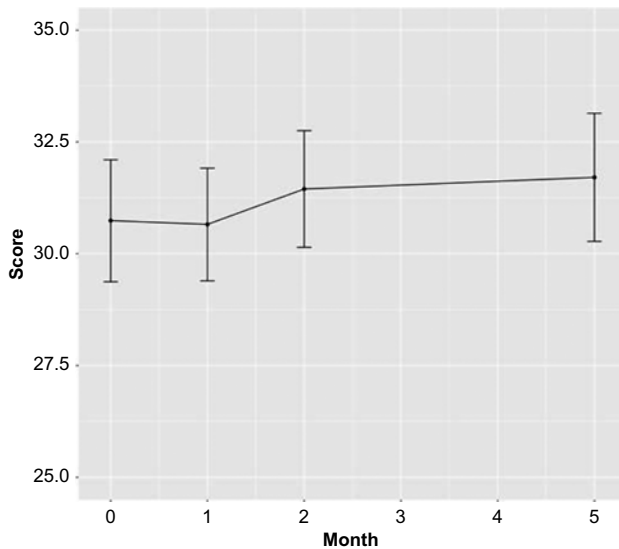


Figure 1. Change in resilience. Resilience measured by Connor-Davidson Resilience Scale (CD-RISC; Campbell-Stills and Stein, 2007) score. CD-RISC significantly improved from month 1 (pre-intervention) to month 5 (follow-up), $Estimate = 1.052$, $SE = 0.454$, $p = 0.021$, Cohen's $d = 0.115$. Bars indicate 95% confidence intervals.

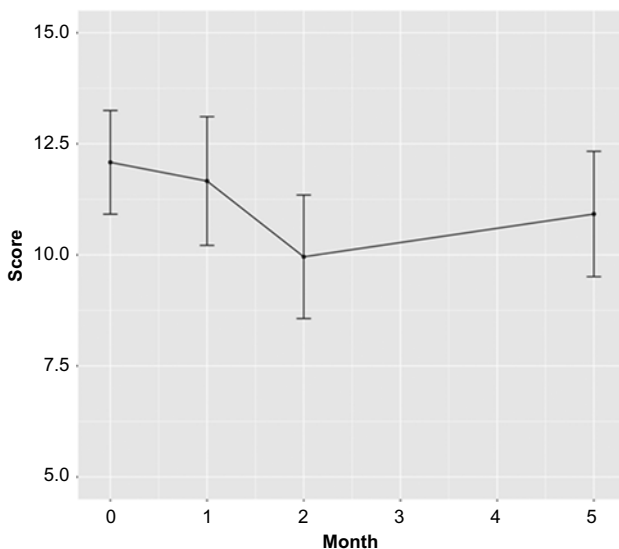


Figure 2. Change in perceived stress. Perceived stress measured by Perceived Stress Scale (PSS; Cohen *et al.*, 1983) score. PSS significantly improved from month 1 (pre-intervention) to month 2 (post-intervention), $Estimate = -1.705$, $SE = 0.607$, $p = 0.005$, Cohen's $d = -0.192$. Bars indicate 95% confidence intervals.

month 1 to month 5 (follow-up) compared to the control period, all $ps > 0.05$. All main effect model parameters are presented in Table 2.

Regarding treatment adherence, 66 participants (74.2%) attended all 3 RYR sessions, 9 participants (10.1%) attended 2 sessions, and 6 (6.7%) attended

1 session. Sixty-five (73.0%) participants turned their daily diaries in, and another six participants (6.74%) reported completing the journal but did not turn it in due to privacy issues. Of those who returned their daily diaries, the mean number of days completed (of a potential 31) was 23.1 ($SD = 9.5$) or 74%, and median was 28 days. The modal value of daily diaries completed was 31. Satisfaction with RYR was generally high. The average score of the satisfaction measure was 3.1 ($SD = 0.53$) on scale from 1 to 4 (4 indicating highest satisfaction).

Examination of potential moderator effects found no evidence that baseline demographic or psychosocial variables, treatment adherence, or treatment satisfaction moderated change in CD-RISC between pre-intervention (month 1) and post-intervention (month 2) or between pre-intervention (month 1) and follow-up (month 5), all $ps > 0.05$.

Discussion

This modified stepped-wedge pragmatic trial conducted in five senior housing communities across three states in the US examined RYR, a novel group intervention intended to improve resilience and associated positive outcomes among older adults. Compared to the control period, resilience improved among participants from pre-intervention to 3-month follow-up, and perceived stress and wisdom improved from pre-intervention to post-intervention. Effect sizes for these outcomes were small. There were no changes in physical and mental well-being. Examination of potential moderating effects yielded no significant moderators.

Although the effect sizes of the outcomes that changed significantly were small, this may be attributable, in part, to the high baseline resilience of the sample. The median baseline CD-RISC score was 32 (on a range of 0–40). This mirrors Arias Gonzalez and colleagues' conclusion (2015) that ceiling effects in CD-RISC may prevent capturing the full range of resilience, particularly for nonclinical populations. Still, it is notable that among these highly resilient participants, further significant improvements were detected, consistent with our goal of preventing decline in health and well-being by fostering protective psychological mechanisms.

Although scores trended upward from pre-intervention to post-intervention, changes in resilience were only significant from pre-intervention to 3-month follow-up. This indicates the value of continued use of the practices taught in RYR, including use of a daily diary and engagement in value-based behavior. Smith and Hanni (2019) also found evidence that resilience continued to increase in

Table 1. SD-WISE total and subscale means and standard deviations over time

	Month 0 (baseline)	Month 1 (pre-intervention)	Month 2 (post-intervention)	Month 5 (follow-up)
SD-WISE Total ¹	3.92 (0.42)	3.91 (0.40)	4.02 (0.42)	3.95 (0.46)
Decisiveness	3.81 (0.76)	3.84 (0.70)	3.94 (0.65)	3.92 (0.63)
Emotional Regulation	3.67 (0.68)	3.63 (0.68)	3.83 (0.63)	3.70 (0.76)
Insight	3.89 (0.63)	3.96 (0.61)	3.96 (0.63)	3.89 (0.70)
Prosocial Behaviors	4.41 (0.45)	4.37 (0.43)	4.41 (0.54)	4.41 (0.46)
Social Advising	3.71 (0.60)	3.72 (0.58)	3.84 (0.57)	3.78 (0.66)
Tolerance for Divergent Values	3.99 (0.55)	3.96 (0.57)	4.08 (0.58)	4.01 (0.64)

SD-WISE = San Diego Wisdom Scale (Thomas *et al.*, 2019).

The SD-WISE total score increased significantly during the intervention period compared to the control period, *Estimate* = 0.112, *SE* = 0.038, *p* = 0.007, Cohen's *d* = 0.251. Among SD-WISE subscales, Emotional Regulation (*p* = 0.002, Cohen's *d* = 0.208) and Social Advising (*p* = 0.042, Cohen's *d* = 0.180) improved during the intervention period compared to the control period, while Tolerance of Divergent Values approached significance over that period, *p* = 0.060, Cohen's *d* = 0.221. The other SD-WISE subscales, Decisiveness, Insight, and Prosocial Behaviors, did not show significant changes, all *ps* > 0.05, Cohen's *ds* = |0.05–0.17|.

¹ The score range for SD-WISE total score and each subscale is 1–5, with higher numbers indicating higher level of wisdom.

Table 2. Main effect model parameters

Outcome variable	Study period	<i>N</i>	Estimate	<i>SE</i>	Wald test statistic	<i>p</i>
CD-RISC	Month 1–2	84	0.791	0.524	1.511	0.131
	Month 1–5	84	1.052	0.455	2.313	0.021
PSS	Month 1–2	80	–1.705	0.607	–2.810	0.005
	Month 1–5	80	–0.743	0.544	–1.365	0.172
SF-12 Mental Well-Being	Month 1–2	73	1.485	1.054	1.409	0.159
	Month 1–5	73	0.954	0.945	1.009	0.313
SF-12 Physical Well-Being	Month 1–2	73	–1.096	1.103	–0.993	0.321
	Month 1–5	73	–1.276	1.072	–1.191	0.234
SD-WISE	Month 1–2	71	0.112	0.042	2.700	0.007
	Month 1–5	71	0.041	0.038	1.082	0.279

CD-RISC = Connor-Davidson Resilience Scale (Campbell-Stills and Stein, 2007); PSS = Perceived Stress Scale (Cohen *et al.*, 1983); SD-WISE = San Diego Wisdom Scale (Thomas *et al.*, 2019); SF-12 = 12-item Short-Form Health Survey (Ware *et al.*, 1996).

the 3 months following participation in a 1-week savoring intervention. Treatment adherence did not moderate changes in resilience in our study, unlike Smith and Hanni's findings. This could be because of the considerably high adherence in our sample, and thus limited variance. Additionally, again unlike Smith and Hanni, we did not measure post-intervention engagement in treatment activities like daily diary completion. Additionally, some participants reported reluctance to turn in their daily diaries due to privacy concerns. Measuring diary use while maintaining participant privacy is a delicate balance in need of further fine-tuning.

Significant improvements in perceived stress and wisdom occurred from pre-intervention to post-intervention. The pursuit of improving resilience is ultimately rooted in the goal of reducing stress and its widespread and deleterious impacts (Dautovich *et al.*, 2014; Frias and Whyne, 2015; Kulmala *et al.*, 2013). Our results show changes

in both areas; improving positive outcomes (i.e. resilience and wisdom) and reducing negative ones (i.e. perceived stress). Reduction of stress, even with the small effect size, can boost older adults' health and help them function independently longer (Almeida *et al.*, 2011).

This study has several limitations that should be acknowledged. First, the findings require replication. We did not use traditional randomization. However, the modified stepped-wedge design allowed for examination of changes during a control period, indicating that the improvements in perceived stress and wisdom were related to participation in RYR. We did not use an active control group for comparison. Examining change during the intervention period alone and from baseline to follow-up inflates the likelihood of a type I error, although inclusion of effect sizes improves interpretation confidence. The small size of the effects is also a limiting factor for clinical significance. Due to the

potential ceiling effects, examining the impact of RYR in a sample with lower baseline resilience and those in assisted living facilities would be valuable. Additionally, the outcome measures used were based on self-report. In future, at least semi-objective measures such as reports by family members and facility staff might be useful. Our treatment adherence measures might not have been sufficiently sensitive. Perhaps daily monitoring of practices during intervention and follow-up periods via ecological momentary assessment (Moore *et al.*, 2016) might provide more sensitive assessment of treatment adherence. Additionally, we did not measure continued completion of daily diaries after the end of the intervention, which would have elucidated post-intervention engagement.

Notwithstanding these limitations, this study adds to the literature in several ways; primarily, by presenting a novel resilience intervention targeted specifically for older adults. Additionally, to our knowledge, this is the first study to examine a manualized resilience intervention delivered within senior housing communities and provided by non-licensed retirement community staff trained by the research team. We employed a pragmatic trial design, modified stepped-wedge design, which is participant-friendly and feasible, especially for group interventions. The number of dropouts was small, and both treatment adherence and satisfaction were high. These findings support the feasibility of conducting high-caliber pragmatic intervention trials in senior housing communities.

Prevention and intervention strategies delivered in senior housing communities by non-licensed residential staff have the ability to reach many older adults who might not be able to or might not choose to access mental healthcare. This approach provides preventive care for older adults at risk, increasing their ability to handle the common stresses of aging while continuing to pursue meaning and growth, and without requiring these communities to hire licensed mental health providers. All these characteristics heighten the implementation and dissemination potential of RYR while increasing accessibility for older adults who may have limited mobility and access to transportation. Such interventions will play an important role in promoting resilience and other facets of positive psychiatry in late life.

Conclusions

This study presented a novel psychological intervention, using pragmatic trial design, intended to improve resilience in older adults in an important setting: senior housing communities, where growing

numbers of older adults will live, providing a vital opportunity to increase accessibility of intervention strategies to support successful aging. There was improvement in perceived stress and wisdom, and over a longer period, in resilience. The study sample had relatively high baseline resilience, which both enhanced the meaningfulness of these small effects, and also indicated that effects may be larger among older adults with lower baseline resilience or those in assisted living facilities. Consideration of interventions that can be implemented within senior housing communities is important to enhancing the health and well-being of older adults who may struggle to access formal mental healthcare.

Conflicts of interest

Authors CO and JS acknowledge being employees of a funding source, Mather Institute. No other conflicts of interest exist for any authors.

Source of funding

This work was supported, in part, by the Mather Institute and by the National Institute of Mental Health T32 Geriatric Mental Health Program (grant MH019934 to DVJ [PI]), and an R01 grant (R01MH094151-01 to DVJ [PI]), and the Sam and Rose Stein Institute for Research on Aging, University of California San Diego.

Description of authors' roles

ET contributed to study design, wrote the first draft of the manuscript, oversaw statistical analyses, and created tables and figures. DG contributed to development of the RYR intervention and study design, oversaw data collection, and contributed to manuscript writing. EL contributed to study design, statistical approach, and manuscript writing. TW completed the majority of statistical analyses, created tables and figures, and contributed to manuscript writing. XT supervised all statistical analyses and overall statistical approach, and contributed to manuscript writing. RD supervised data collection and data entry, contributed to statistical analyses, and contributed to manuscript writing. CO contributed to development of the RYR intervention and study design, coordinated and oversaw data collection, and contributed to manuscript writing. JS contributed to development of the RYR intervention and study design, coordinated and oversaw data collection, and contributed to manuscript writing.

DJ contributed to development of the RYR intervention and study design, coordinated and oversaw data collection, contributed to statistical analysis approach, and contributed to manuscript writing.

Sponsor's role

Two of the co-authors of this paper are employees of the Mather Institute (CO and JS). They were not involved in the data analysis or the preparation of the paper; however, they edited the paper. They were involved in the design, methods as well as subject recruitment and data collection at Evanston, Wilmette, and Tucson sites for this study.

Impact statement

We certify that this work is novel clinical research. This research makes two major contributions to the literature. First, it demonstrates the feasibility and acceptability of an innovative pragmatic clinical trial in senior housing communities, using a multisite stepped-wedge design and employing a manualized group intervention administered by unlicensed residential staff trained by research team. Second, it provides evidence that a novel, brief psychological intervention can improve resilience and wisdom, and reduce perceived stress, albeit with small effect size, among independent living adults with relatively high levels of baseline resilience.

Acknowledgments

We gratefully acknowledge Cheryl Jennifer McClune, MSW, for her contributions to the RYR manual, and Belmont Village Senior Living for their support and dedication to this project.

References

- Almeida, D. M. et al.** (2011). The speedometer of life: Stress, health and aging. In: K. W. Schaie and S. L. Willis (Eds.), *Handbook of the Psychology of Aging* (7th ed., pp. 191–206). San Diego, CA: Academic Press.
- Arias González, V. B. et al.** (2015). An in-depth psychometric analysis of the Connor–Davidson resilience scale: calibration with Rasch–Andrich model. *Health and Quality of Life Outcomes*, 13, 154. doi: [10.1186/s12955-015-0345-y](https://doi.org/10.1186/s12955-015-0345-y)
- Borson, S. et al.** (2019). Reducing barriers to mental health care: bringing evidence-based psychotherapy home. *Journal of the American Geriatrics Society*, 67, 2174–2179. doi: [10.1111/jgs.16088](https://doi.org/10.1111/jgs.16088)

- Campbell-Sills, L. and Stein, M. B.** (2007). Psychometric analysis and refinement of the Connor–Davidson Resilience Scale (CD-RISC): validation of a 10-item measure of resilience. *Journal of Traumatic Stress*, 20, 1019–1028. doi: [10.1002/jts.20271](https://doi.org/10.1002/jts.20271)
- Charles, S. T. et al.** (2013). The wear-and-tear of daily stressors on mental health. *Psychological Sciences*, 24, 733–741. doi: [10.1177/0956797612462222](https://doi.org/10.1177/0956797612462222)
- Chmitorz, A. et al.** (2018). Intervention studies to foster resilience – a systematic review and proposal for a resilience framework in future intervention studies. *Clinical Psychology Review*, 59, 78–100. doi: [10.1016/j.cpr.2017.11.002](https://doi.org/10.1016/j.cpr.2017.11.002)
- Cohen, J.** (1988). *Statistical Power Analysis for the Behavioral Sciences* (2nd ed.). Mahwah, NJ: LEA.
- Cohen, S., Kamarck, T. and Mermelstein, R.** (1983). A global measure of perceived stress. *Journal of Health and Social Behavior*, 24, 385–396. doi: [10.2307/2136404](https://doi.org/10.2307/2136404)
- Copas, A. J. et al.** (2015). Designing a stepped wedge trial: three main designs, carry-over effects and randomisation approaches. *Trials*, 16, 352. doi: [10.1186/s13063-015-0842-7](https://doi.org/10.1186/s13063-015-0842-7)
- Dautovich, N. D., Dzierzewski, J. M. and Gum, A. M.** (2014). Older adults display concurrent but not delayed associations between life stressors and depressive symptoms: a micro-longitudinal study. *American Journal of Geriatric Psychiatry*, 22, 1131–1139. doi: [10.1016/j.jagp.2013.02.008](https://doi.org/10.1016/j.jagp.2013.02.008)
- Depp, C. A., Harmell, A. L. and Jeste, D.** (2014). Strategies for successful aging: a research update. *Current Psychiatry Reports*, 16, 476. doi: [10.1007/s11920-014-0476-6](https://doi.org/10.1007/s11920-014-0476-6)
- Depp, C. A. and Jeste, D. V.** (2006). Definitions and predictors of successful aging: a comprehensive review of larger quantitative studies. *The American Journal of Geriatric Psychiatry*, 14, 6–20. doi: [10.1097/01.JGP.0000192501.03069.bc](https://doi.org/10.1097/01.JGP.0000192501.03069.bc)
- Dong, X.** (2017). Advancing community and health equity: health and wellbeing of U.S. Chinese Populations. *Journal of Gerontology Series A: Biological Sciences & Medical Sciences*, 72(Suppl. 1), S1–S4. doi: [10.1093/geron/glx049](https://doi.org/10.1093/geron/glx049)
- Elman, J. A. et al.** (2018). Underdiagnosis of mild cognitive impairment: a consequence of ignoring practice effects. *Alzheimers Dementia (Amst)*, 10, 372–381. doi: [10.1016/j.dadm.2018.04.003](https://doi.org/10.1016/j.dadm.2018.04.003)
- Engel, J. H. et al.** (2011). Hardiness, depression, and emotional well-being and their association with appetite in older adults. *Journal of the American Geriatrics Society*, 59, 482–487. doi: [10.1111/j.1532-5415.2010.03274.x](https://doi.org/10.1111/j.1532-5415.2010.03274.x)
- Frias, C. M. de and Whyne, E.** (2015). Stress on health-related quality of life in older adults: the protective nature of mindfulness. *Aging & Mental Health*, 19, 201–206. doi: [10.1080/13607863.2014.924090](https://doi.org/10.1080/13607863.2014.924090)
- Glaesmer, H. et al.** (2012). Psychometric properties and population-based norms of the Life orientation test revised (LOT-R). *British Journal of Health Psychology*, 17, 432–445. doi: [10.1111/j.2044-8287.2011.02046.x](https://doi.org/10.1111/j.2044-8287.2011.02046.x)
- Guo, K. and Castillo, R.** (2012). The U.S. long term care system: development and expansion of naturally occurring retirement communities as an innovative model for aging in place. *Aging International*, 37, 210–227. doi: [10.1007/s12126-010-9105-9](https://doi.org/10.1007/s12126-010-9105-9)

- Hemming, K. et al.** (2015). The stepped wedge cluster randomised trial: rationale, design, analysis, and reporting. *BMJ*, 350, h391–h391. doi: [10.1136/bmj.h391](https://doi.org/10.1136/bmj.h391)
- Hildon, Z. et al.** (2010). Examining resilience of quality of life in the face of health-related and psychosocial adversity at older ages: what is “right” about the way we age? *Gerontologist*, 50, 36–47. doi: [10.1093/geront/gnp067](https://doi.org/10.1093/geront/gnp067)
- Hjemdal, O. et al.** (2011). The relationship between resilience and levels of anxiety, depression, and obsessive-compulsive symptoms in adolescents. *Clinical Psychology & Psychotherapy*, 18, 314–321. doi: [10.1002/cpp.719](https://doi.org/10.1002/cpp.719)
- Ho, H. C. Y., Yeung, D. Y. and Kwok, S. Y. C. L.** (2014). Development and evaluation of the positive psychology intervention for older adults. *The Journal of Positive Psychology*, 9, 187–197. doi: [10.1080/17439760.2014.888577](https://doi.org/10.1080/17439760.2014.888577)
- Jans-Beken, L. et al.** (2019). Gratitude and health: an updated review. *The Journal of Positive Psychology*, 1–40. doi: [10.1080/17439760.2019.1651888](https://doi.org/10.1080/17439760.2019.1651888)
- Jeste, D. V.** (2018). Positive psychiatry comes of age. *International Psychogeriatrics*, 30, 1735–1738. doi: [10.1017/S1041610218002211](https://doi.org/10.1017/S1041610218002211)
- Jeste, D. V. and Childers, J.** (2017). Strategic planning for transformative senior living: developing tomorrow’s leadership and workforce. *Seniors Housing & Care Journal*, 25, 113–126.
- Jeste, D. V. et al.** (2013). Association between older age and more successful aging: critical role of resilience and depression. *American Journal of Psychiatry*, 170, 188–196.
- Jeste, D. V. et al.** (2015). Positive psychiatry: its time has come. *Journal of Clinical Psychiatry*, 76, 675–683. doi: [10.4088/JCP.14nr09599](https://doi.org/10.4088/JCP.14nr09599)
- Jeste, D. V. et al.** (2019). Study of independent living residents of a continuing care senior housing community: sociodemographic and clinical associations of cognitive, physical, and mental health. *American Journal of Geriatric Psychiatry*, 27, 895–907. doi: [10.1016/j.jagp.2019.04.002](https://doi.org/10.1016/j.jagp.2019.04.002)
- Johnston, M. C. et al.** (2015). Physical disease and resilient outcomes: a systematic review of resilience definitions and study methods. *Psychosomatics*, 56, 168–180. doi: [10.1016/j.psym.2014.10.005](https://doi.org/10.1016/j.psym.2014.10.005)
- Kavirajan, H. et al.** (2011). Attitude toward own aging and mental health in post-menopausal women. *Asian Journal of Psychiatry*, 4, 26–30. doi: [10.1016/j.ajp.2011.01.006](https://doi.org/10.1016/j.ajp.2011.01.006)
- Killen, A. and Macaskill, A.** (2015). Using a gratitude intervention to enhance well-being in older adults. *Journal of Happiness Studies*, 16, 947–964. doi: [10.1007/s10902-014-9542-3](https://doi.org/10.1007/s10902-014-9542-3)
- Kulmala, J. et al.** (2013). Perceived stress symptoms in midlife predict disability in old age: a 28-year prospective cohort study. *Journal of Gerontology Series A: Biological Sciences & Medical Sciences*, 68, 984–991. doi: [10.1093/geron/gls339](https://doi.org/10.1093/geron/gls339)
- Laird, K. T. et al.** (2019). Clinical correlates of resilience factors in geriatric depression. *International Psychogeriatrics*, 31, 193–202. doi: [10.1017/S1041610217002873](https://doi.org/10.1017/S1041610217002873)
- Lavretsky, H.** (2014). *Resilience and Aging: Research and Practice* (1st ed.). Baltimore, MD: Johns Hopkins University Press.
- Lyubomirsky, S. and Lepper, H. S.** (1999). A measure of subjective happiness: preliminary reliability and construct validation. *Social Indicators Research*, 46, 137–155.
- MacLeod, S. et al.** (2016). The impact of resilience among older adults. *Geriatric Nursing*, 37, 266–272. doi: [10.1016/j.gerinurse.2016.02.014](https://doi.org/10.1016/j.gerinurse.2016.02.014)
- Marquet, M. et al.** (2018). Understanding the mechanisms underlying the effects of negative age stereotypes and perceived age discrimination on older adults’ well-being. *Aging & Mental Health*, 23, 1–8. doi: [10.1080/13607863.2018.1514487](https://doi.org/10.1080/13607863.2018.1514487)
- Mdege, N. D. et al.** (2011). Systematic review of stepped wedge cluster randomized trials shows that design is particularly used to evaluate interventions during routine implementation. *Journal of Clinical Epidemiology*, 64, 936–948. doi: [10.1016/j.jclinepi.2010.12.003](https://doi.org/10.1016/j.jclinepi.2010.12.003)
- Meléndez Moral, J. C. et al.** (2015). Effect of integrative reminiscence therapy on depression, well-being, integrity, self-esteem, and life satisfaction in older adults. *The Journal of Positive Psychology*, 10, 240–247. doi: [10.1080/17439760.2014.936968](https://doi.org/10.1080/17439760.2014.936968)
- Moore, R. C. et al.** (2016). Ecological momentary assessment versus standard assessment instruments for measuring mindfulness, depressed mood, and anxiety among older adults. *Journal of Psychiatric Research*, 75, 116–123. doi: [10.1016/j.jpsychires.2016.01.011](https://doi.org/10.1016/j.jpsychires.2016.01.011)
- Mujeeb, A. and Zubair, A.** (2012). Resilience, stress, anxiety and depression among internally displaced persons affected by armed conflict. *Pakistan Journal of Social and Clinical Psychology*, 10, 20–26.
- Ong, A. D., Bergeman, C. S. and Boker, S. M.** (2009). Resilience comes of age: defining features in later adulthood. *Journal of Personality*, 77, 1777–1804. doi: [10.1111/j.1467-6494.2009.00600.x](https://doi.org/10.1111/j.1467-6494.2009.00600.x)
- Patsopoulos, N. A.** (2011). A pragmatic view on pragmatic trials. *Dialogues in Clinical Neuroscience*, 13, 217–224.
- Reichstadt, J. et al.** (2010). Older adults’ perspectives on successful aging: qualitative interviews. *American Journal of Geriatric Psychiatry*, 18, 567–575.
- Rutter, M.** (2007). Resilience, competence, and coping. *Child Abuse & Neglect*, 31, 205–209. doi: [10.1016/j.chiabu.2007.02.001](https://doi.org/10.1016/j.chiabu.2007.02.001)
- Scott, K. M. et al.** (2013). Associations between lifetime traumatic events and subsequent chronic physical conditions: a cross-national, cross-sectional study. *PLOS One*, 8, e80573. doi: [10.1371/journal.pone.0080573](https://doi.org/10.1371/journal.pone.0080573)
- Short, J. L.** (2012). Psychological fitness for older adults: a pilot intervention. *Seniors Housing & Care Journal*, 20, 71–84.
- Smith, J. L. and Hanni, A. A.** (2019). Effects of a savoring intervention on resilience and well-being of older adults. *Journal of Applied Gerontology*, 38, 137–152. doi: [10.1177/0733464817693375](https://doi.org/10.1177/0733464817693375)
- Smith, J. L. and Hollinger-Smith, L.** (2015). Savoring, resilience, and psychological well-being in older adults. *Aging & Mental Health*, 19, 192–200. doi: [10.1080/13607863.2014.986647](https://doi.org/10.1080/13607863.2014.986647)
- Stewart, D. E. and Yuen, T.** (2011). A systematic review of resilience in the physically ill. *Psychosomatics*, 52, 199–209. doi: [10.1016/j.psym.2011.01.036](https://doi.org/10.1016/j.psym.2011.01.036)
- Tang, W., He, H. and Tu, X. M.** (2012). *Applied Categorical and Count Data Analysis*. Boca Raton, FL: Chapman & Hall/CRC.
- Thomas, M. L. et al.** (2019). A new scale for assessing wisdom based on common domains and a neurobiological

- model: The San Diego Wisdom Scale (SD-WISE). *Journal of Psychiatric Research*, 108, 40–47. doi: [10.1016/j.jpsychires.2017.09.005](https://doi.org/10.1016/j.jpsychires.2017.09.005)
- Tu, X. M. *et al.*** (2004). Power analyses for longitudinal trials and other clustered study design. *Statistics in Medicine*, 23, 2799–2815.
- Ware, J., Kosinski, M. and Keller, S. D.** (1996). A 12-item short-form health survey: construction of scales and preliminary tests of reliability and validity. *Medical Care*, 34, 220–233. doi: [10.1097/00005650-199603000-00003](https://doi.org/10.1097/00005650-199603000-00003)
- Wingo, A. P. *et al.*** (2010). Moderating effects of resilience on depression in individuals with a history of childhood abuse or trauma exposure. *Journal of Affective Disorders*, 126, 411–414. doi: [10.1016/j.jad.2010.04.009](https://doi.org/10.1016/j.jad.2010.04.009)
- Woertman, W. *et al.*** (2013). Stepped wedge designs could reduce the required sample size in cluster randomized trials. *Journal of Clinical Epidemiology*, 66, 752–758. doi: [10.1016/j.jclinepi.2013.01.009](https://doi.org/10.1016/j.jclinepi.2013.01.009)
- Zhang, H. *et al.*** (2011). On fitting generalized linear mixed-effects models for binary responses using different statistical packages. *Statistics in Medicine*, 30, 2562–2572.