

# The Psychiatrist

FORMERLY THE PSYCHIATRIC BULLETIN

## EDITORIALS

- 361 How did we let it come to this? A plea for the principle of continuity of care  
George Lodge
- 364 Importance of specialisation in psychiatric services. Commentary on . . . How did we let it come to this?  
Helen Killaspy

## ORIGINAL PAPERS

- 366 Validation of the Security Needs Assessment Profile (SNAP) by a national survey of secure units in England  
Steffan Davies, Mick Collins, Chris Ashwell
- 371 Penetration of Time to Change leaflets on stigmatised attitudes to people with mental illness  
Vania Mendes, Joby Maducolil Easow, Jason Luty

## SPECIAL ARTICLE

- 375 The cardiovascular health of young people with severe mental illness: addressing an epidemic within an epidemic  
Sue Bailey, Clare Gerada, Helen Lester, David Shiers

## CURRENT PRACTICE

- 379 Decisions on disclosure to third parties made at MAPP meetings: opinions and practice  
Catherine Penny, Jackie Craissati

## EDUCATION & TRAINING

- 386 Mixed-methods evaluation of a leadership development programme for higher specialist trainees  
Christine Healey, David Fearnley, Mandy Chivers, Ovais Wadoo, Peter Kinderman
- 391 Use of an online virtual environment in psychiatric problem-based learning  
Jeremy Rampling, Aileen O'Brien, Keelyjo Hindhaugh, Luke Woodham, Sheetal Kavia

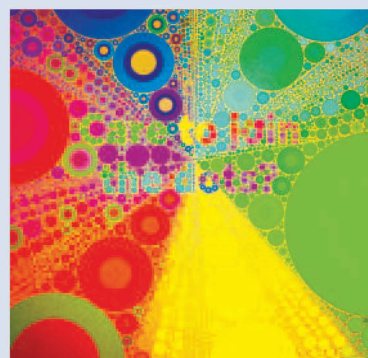
## COLUMNS

- 397 Correspondence
- 399 Reviews  
Intelligent Kindness: Reforming the Culture of Healthcare Mental Health and Care Homes
- 400 e-Interview  
Dr Niall (Jock) McLaren

<http://pb.rcpsych.org>

Published by the Royal College of Psychiatrists

ISSN: 1758-3209



### Cover image

Care to join the dots? In this issue, George Lodge (pp. 361–363) argues that the fragmentation of community psychiatry services into specialist teams has eroded the principle of continuity of care. Helen Killaspy (pp. 364–365) argues instead that the development of specialist community teams shows that psychiatry is progressive, and responsive to its expanding evidence base.

Image © Guy Undrill 2012.