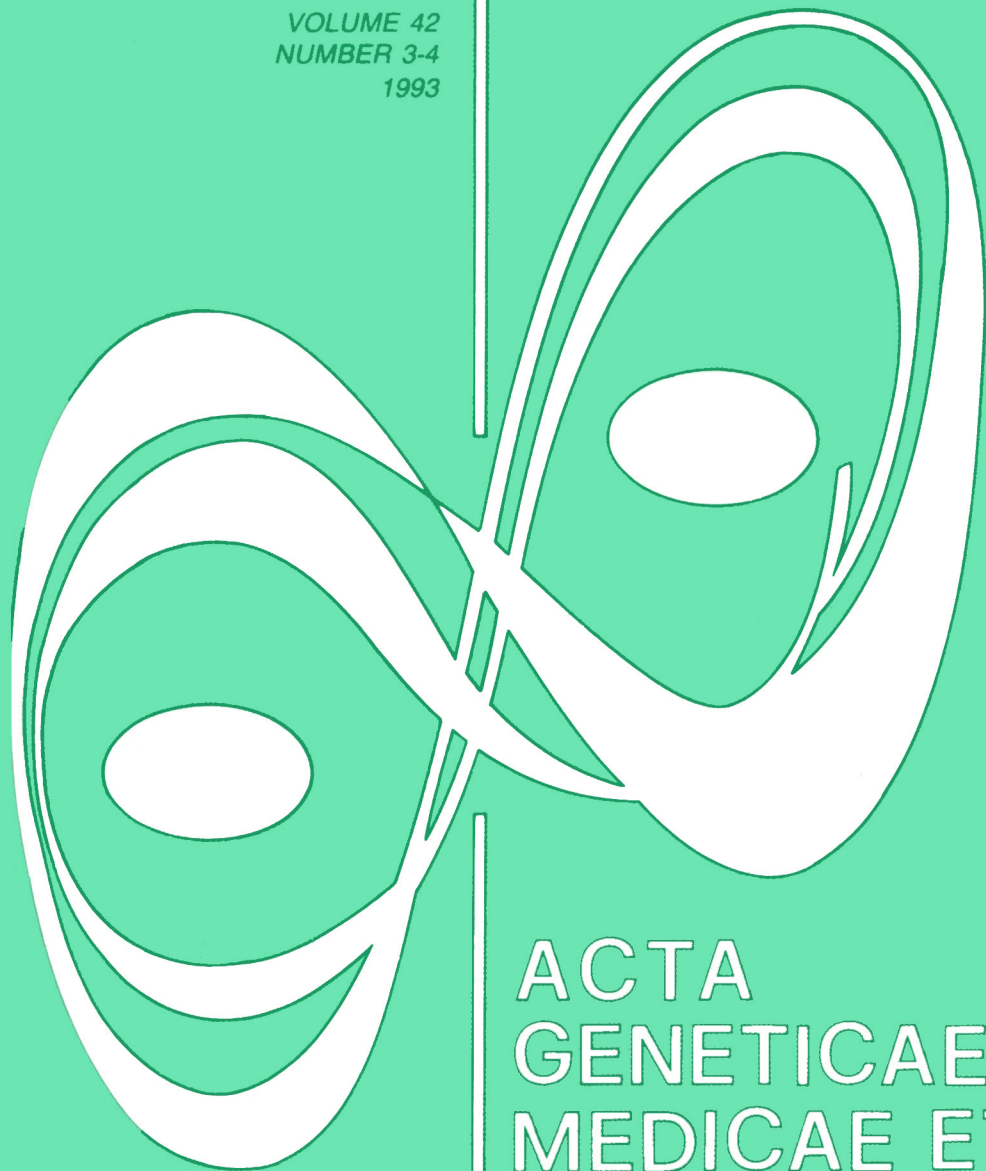


VOLUME 42  
NUMBER 3-4  
1993



ACTA  
GENETICAE  
MEDICAE ET  
GEMELLOLOGIAE  
TWIN RESEARCH

CODEN AGMGAK 42: 237-404 (1993)

<https://doi.org/10.1017/S0001566000000820> Published online by Cambridge University Press

*Official Journal of the International Society for Twin Studies*

Published by THE MENDEL INSTITUTE, Rome

# ACTA GENETICAE MEDICAE ET GEMELLOLOGIAE

## TWIN RESEARCH

Published by The Mendel Institute, Rome  
Official Journal of the International Society for Twin Studies

---

### EDITOR-IN-CHIEF

**Luigi Gedda**  
*The Mendel Institute, Rome*

### EDITORIAL BOARD

**Gordon Allen**  
*Bethesda, Maryland*

**Frank Barron**  
*Laboratory for the Psychological Study of Lives  
University of California, Santa Cruz*

**Kurt Benirschke**  
*Zoological Society of San Diego, California*

**Kare Berg**  
*Institute of Medical Genetics, University of Oslo*

**Jan A. Böök**  
*Institute of Medical Genetics  
University of Uppsala, Sweden*

**Rune Cederlöf**  
*Department of Environmental Hygiene  
Karolinska Institute, Stockholm*

**Joe C. Christian**  
*Department of Medical Genetics  
Indiana University, Indianapolis*

**E. Defrise-Gussenhoven**  
*Laboratory of Human Genetics  
Free University of Brussels*

**Lindon J. Eaves**  
*Department of Human Genetics  
Medical College of Virginia, Richmond*

**Aldur W. Eriksson**  
*Anthropogenetic Institute  
Free University of Amsterdam*

**Manning Feinleib**  
*National Center for Health Statistics  
Hyattsville, Maryland*

**David W. Fulker**  
*Institute for Behavioral Genetics  
University of Colorado, Boulder*

**Irving I. Gottesman**  
*Washington University Medical Center  
St. Louis, Missouri*

**Isaac Halbrecht**  
*B. Gattegno Research Institute of Human  
Reproduction and Fetal Development  
Hasharon Hospital, Petah Tiqva, Israel*

**Mogens Hauge**  
*Institute of Clinical Genetics  
University of Odense, Denmark*

**Joseph M. Horn**  
*Department of Psychology  
University of Texas, Austin*

**Zdenek Hrubec**  
*National Cancer Institute  
Bethesda, Maryland*

**Eiji Inouye**  
*Institute of Brain Research, University of Tokyo*

**Lissy F. Jarvik**  
*Department of Psychiatry  
University of California, Los Angeles*

**Louis Keith**  
*Department of Obstetrics and Gynecology  
Northwestern University, Chicago*

**R.D.G. Leslie**  
*St. Bartholomew's Hospital, London*

**Gerhard Koch**  
*Institute of Human Genetics  
University of Erlangen-Nürnberg, FRG*

**Einar Kringlen**  
*Institute of Behavioral Sciences in Medicine  
University of Oslo*

**Jérôme Lejeune**  
*Institute of Progenesis, University of Paris*

**F. Leroy**  
*Department of Obstetrics and Gynecology  
Free University of Brussels*

**Ian MacGillivray**  
*Bristol, UK*

**Ashley Montagu**  
*Princeton, New Jersey*

**Walter E. Nance**  
*Department of Human Genetics  
Medical College of Virginia, Richmond*

**P.P.S. Nylander**  
*Department of Obstetrics and Gynecology  
University of Ibadan, Nigeria*

**John D. Rainer**  
*Department of Psychiatry  
Columbia University, New York*

**Francisco M. Salzano**  
*Institute of Biosciences, UFRGS  
Porto Alegre, RS, Brasil*

**René Zazzo**  
*Laboratory of Child Psychobiology  
University of Paris*

*Acta Geneticae Medicae et Gemellologiae* is published quarterly by The Mendel Institute, Piazza Galeno 5, 00162 Rome, Italy.

**Subscription price:** Volume 42 (1993), 4 issues of approx. 100 pages each: US \$ 300.00. Airmail supplement: US \$ 30.00 (Oceania US \$ 40.00).

**Indexed by:** Current Contents/Life Sciences - Social Sciences index • Psychological Abstracts • Biological Abstracts • Excerpta Medica • Institute of Scientific Information USSR.

Printed in Italy

Autorizzazione del Tribunale di Roma - Registro Stampa N. 345/83 del 7.12.1983.

Direttore responsabile: Luigi Gedda

© 1993 by Associazione Istituto di Genetica Medica e Gemellologia Gregorio Mendel.

## CONTENTS

Volume 42 • Number 1 • 1993

- 1 **Tribute to Gregorio Mendel**
- 3 **Our Forty Years**  
by L. Gedda
- 7 **A Case-Control Study of Maternal Gestational Weight Gain and Newborn Birthweight and Birthlength in Twin Pregnancies Complicated by Preeclampsia**  
by B. Luke, L. Keith, J.A. Lopez-Zeno, F.R. Witter, E. Saquil
- 17 **Zygoty Diagnosis of Twins by Questionnaire for Twins' Mothers**  
by S. Ooki, K. Yamada, A. Asaka
- 23 **Size for Gestational Age and Neonatal Sleep Variables: Behavioral Indices of Risk in Fullterm Twins**  
by M.L. Riese
- 35 **Twinning Rate in the Muslim Population of West Bengal**  
by A.B. Das Chaudhuri, S. Basu, S. Charkraborty
- 41 **Persistent Discordant Twin Growth Following IVF-ET**  
by R. Ahirom, I. Blickstein
- 45 **The Use of Microsatellites in Zygoty Diagnosis of Twins**  
by J. Erdmann, M.M. Nöthen, M. Stratmann, R. Fimmers, E. Franzek, P. Propping
- 53 **Errata Corrige**
- 55 **Current Research on Multiple Births**

**Volume 42 • Number 2 • 1993**

- 141 Seasonal Variation of Twin Births in Washington State**  
by C.E. Dionne, M. Söderström, S.M. Schwartz
- 151 The Influence of Birth Order and Presentation on Intrauterine Growth of Twins**  
by I. Blickstein, R. Namir, A. Weissman, Y. Diamant
- 159 Low Birthweight in Twins: Black and White Differences**  
by P.L. Waller, A. Ross, R.E. Hoskins, J.R. Daling
- 171 Breathing Patterns of Monozygous Twins during Behavioural Tasks**  
by S.A. Shea, T. Pham Dinh, R.D. Hamilton, A. Guz, G. Benchetrit
- 185 Errata Corrige**
- 187 Current Research on Multiple Births**

**Volume 42 • Number 3-4 • 1993**

- 237 Mirror Imaging in Twins: Biological Polarization - an Evolving Hypothesis**  
by A. Golbin, I. Golbin, L. Keith, D. Keith
- 245 Genetic and Environmental Effects on Blood Cells**  
by G.M.D. Dal Colletto, D.W. Fulker, O.C. de Baretto, M. Kolya
- 253 "Silent" Patent Ductus Arteriosus and Bronchopulmonary Displasia in Low-birthweight Twins**  
by V. Zanardo, D. Trevisanuto, C. Dani, O. Milanese, A. Guglielmi, F. Cantarutti
- 257 Incidence of Superfecundation and Double Paternity in the General Population**  
by W.J. James
- 263 Life Expectancy of Monozygotic and Dizygotic Twins**  
by P. Taubman
- 275 Physical Growth of Japanese Twins**  
by S. Ooki, A. Asaka

- 289 Changing Trends in Twinning**  
by R. Goswami, H.K. Goswami
- 295 Latent Menstrual Cycle in Pre-Menarcheal Monozygotic Twins**  
by I. Nakamura, C. Harada, T. Miura
- 299 Obituary**
- 301 Current Research on Multiple Births**
- 393 Author Index to Volume 42**
- 394 Subject Index to Volume 42**