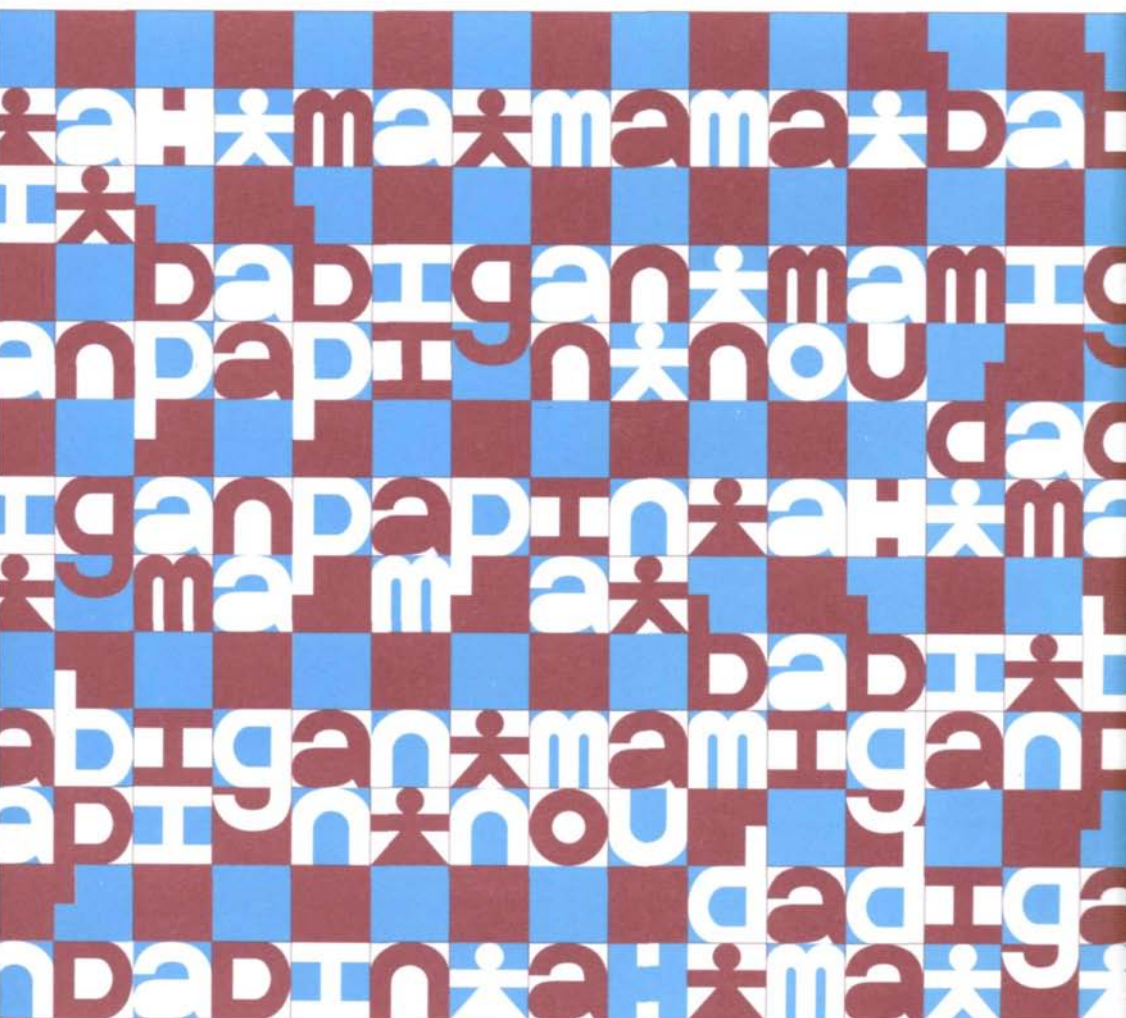


Journal of Child Language

VOLUME 23
NUMBER 1
FEBRUARY 1996



CAMBRIDGE UNIVERSITY PRESS

Editor KATHARINE PERERA, Department of Linguistics, University of Manchester.
Associate Editors GLYN COLLIS, Department of Psychology, University of Warwick, and
BRIAN RICHARDS, Department of Arts and Humanities in Education, University of Reading.
Founding Editor DAVID CRYSTAL (Bangor)

Editorial Board

E. Bates (San Diego), E. Bavin (Melbourne), B. Benelli (Padua), R. Berman (Tel Aviv),
E. Clark (Stanford), A. Cruttenden (Manchester), P. Fletcher (Hong Kong), M. Garman
(Reading), J. Gilbert (Vancouver), P. Griffiths (South Pacific), D. Ingram (Vancouver),
P. Lloyd (Manchester), J. Locke (Sheffield), B. MacWhinney (Carnegie Mellon),
M. Maratsos (Minnesota), S. Pinker (MIT), C. Pratt (Hobart), A. Radford (Essex),
M. Smoczynska (Kraków), C. Snow (Harvard), A. Spencer (Essex), R. Stevenson (Durham),
M. Tomasello (Atlanta), V. Volterra (Rome), The Secretary of the International Association
for the Study of Child Language.

EDITORIAL POLICY. The journal publishes material on all aspects of the scientific study of language behaviour in children, the principles which underlie it, and the theories which may account for it. Articles can report findings from naturalistic observations or experiments; and the subject-matter may include phonology, vocabulary, grammar, semantics, pragmatics, sociolinguistics, or any other recognized facet of language study. Articles may concern the acquisition of one language, or they may have a cross-linguistic focus; they may relate to the study of individuals or of groups of children. Studies of bilingualism, of the acquisition of reading and writing, of the use of a Sign language and of language disability may be included if they have clear relevance to general issues of language development. (Notes for contributors are given on the inside back cover.)

SUBSCRIPTIONS. *Journal of Child Language* (ISSN 0305-0009) is published three times a year, in February, June and October; three parts form a volume. The subscription price (excluding VAT) of Volume 23, 1996, is £89 (US \$152 in the USA, Canada and Mexico) for institutions, £40 net (US \$66) for individuals, including postage. Single parts cost £31 each (US \$51 in the USA, Canada and Mexico), plus postage. Orders, which must be accompanied by payment, should be sent to a bookseller or subscription agent or direct to the publisher: Cambridge University Press, The Edinburgh Building, Shaftesbury Road, Cambridge CB2 2RU (in the USA, Canada and Mexico, to Cambridge University Press, Journals Department, 40 West 20th Street, New York, NY 10011-4211). EU subscribers (outside the UK) who are not registered for VAT should add VAT at their country's rate. VAT registered subscribers should provide their VAT registration number. Japanese prices for institutions (including ASP delivery) are available from Kinokuniya Company Ltd, P.O. Box 55, Chitose, Tokyo 156, Japan. Copies of the Journal for subscribers in the USA, Canada and Mexico are sent by air to New York to arrive with minimum delay; second class postage paid at New York, NY and at additional mailing offices. POSTMASTER: send address changes in the USA, Canada and Mexico to: *Journal of Child Language*, Cambridge University Press, 110 Midland Avenue, Port Chester, New York, NY 10573-4930.

COPYING. This journal is registered with the Copyright Clearance Center, 222 Rosewood Drive, Danvers, MA 01923. Organizations in the USA who are also registered with C.C.C. may therefore copy material (beyond the limits permitted by sections 107 and 108 of US copyright law) subject to payment to C.C.C. of the per-copy fee of \$9.00. This consent does not extend to multiple copying for promotional or commercial purposes. Code 0305-0009/96 \$9.00 + .10.

ISI Tear Sheet Service, 3501 Market Street, Philadelphia, Pennsylvania 19104, USA, is authorized to supply single copies of separate articles for private use only.

Organizations authorized by the Copyright Licensing Agency may also copy material subject to the usual conditions.

For all other use, permission should be sought from the Cambridge or the American Branch of Cambridge University Press.

ABSTRACTING. The journal is covered by relevant abstracting and indexing services including: *Abstracts in Anthropology*, *Association for Education and Rehabilitation of the Blind and Visually Handicapped Yearbook*, *Applied Social Sciences Index & Abstracts*, *Bibliography of Developmental Medicine & Child Neurology*, *British Education Abstracts*, *Chicorel Abstracts to Reading and Learning Disabilities*, *Child Development Abstracts*, *Communication Abstracts*, *Current Contents*, *Current Index to Journals in Education*, *Education Index*, *Language Teaching*, *Linguistic Abstracts*, *Linguistic Bibliography*, *Linguistics and Language Behavior Abstracts*, *Psychological Abstracts*, *Sage Family Studies Abstracts*, *Social Science Citation Index*, *Sociological Abstracts*.

Information on *Journal of Child Language* and all other Cambridge journals is available on <http://www.cup.cam.ac.uk/> and in North America on <http://www.cup.org/>.

© Cambridge University Press 1996