

PHASE BEHAVIOR OF LIGHT GAS MIXTURES AT HIGH PRESSURES

WILLIAM B. STREETT

*Science Research Laboratory and Department of Chemistry, U.S. Military Academy, West Point,
N.Y., U.S.A.*

Abstract. If solid surfaces exist beneath the visible clouds of the major planets, they may be expected to exist at depths and pressures at which the component gas mixtures solidify under their own weight. The elucidation of phase behavior in mixtures of light gases at very high pressures is therefore essential to the solution of the problem of deep atmosphere structures in these planets. Available experimental evidence suggests several possible extrapolations of the H₂-He phase diagram to high pressures. These have been used to develop a structural model for a H₂-He atmosphere. In this model, gravitational separation of coexisting phases results in a layered structure, and it is shown that masses of H₂-rich solid can exist in dynamic and thermodynamic equilibrium with a fluid layer of equal density but higher He content. This model forms the basis of a new hypothesis for Jupiter's Red Spot.

1. Introduction

It is generally accepted (DeMarcus, 1958; Öpik, 1962; Peebles, 1964) that Jupiter and Saturn are composed almost entirely of H₂ and He. If solid surfaces exist beneath the visible clouds of these planets, they may be expected to exist at depths and pressures at which the H₂-He mixture solidifies under its own weight. Whether solidification occurs depends on the equation of path of the atmosphere and the melting behavior of the mixture at high pressures and temperatures. Neither is known with any certainty, so the question of whether a solid surface exists remains open.

2. Solidification of Gas Mixtures

Existing models for the interiors of Jupiter and Saturn (DeMarcus, 1958; Opik, 1962) have been developed on the assumption that the presence of He has little or no effect on fluid-solid phase transitions in the molecular phase of H₂. In this case, solidification occurs abruptly at the point at which the equation of path of the atmosphere crosses the melting curve of hydrogen (Point (a) in Figure 1). Solid and fluid phases coexist only at this point, which marks the level of the planet's solid surface. The purpose of this paper is to point out that the presence of He adds a second degree of freedom (in the context of the phase rule) to the conditions of equilibrium between two phases in a H₂-He mixture, and that this may produce a more complicated structure in the region of transition from fluid to solid in a H₂-He body.

Thermodynamic equilibrium between solid and fluid phases in a H₂-He mixture is likely to exist over a finite distance along the equation of path (effectively over a range of depths in the atmosphere) with the compositions of the coexisting phases varying continuously with pressure and temperature in this region. This behavior is illustrated in the *P-T* diagram of Figure 2, which shows (schematically) the melting

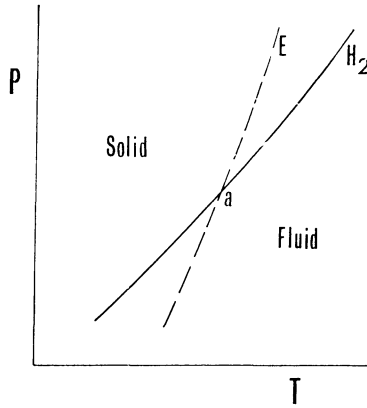


Fig. 1. Pressure-temperature diagram showing the melting curve of hydrogen (H_2) and the equation of path (E) for a planetary atmosphere.

curves of H_2 and He, along with several hypothetical equations of path for the planetary atmosphere. The coexistence region for solid and fluid phases, in a H_2 -He mixture, lies approximately between the melting curves, so that for an equation of path E_1 (the isothermal case) these phases coexist approximately between points a and b.*

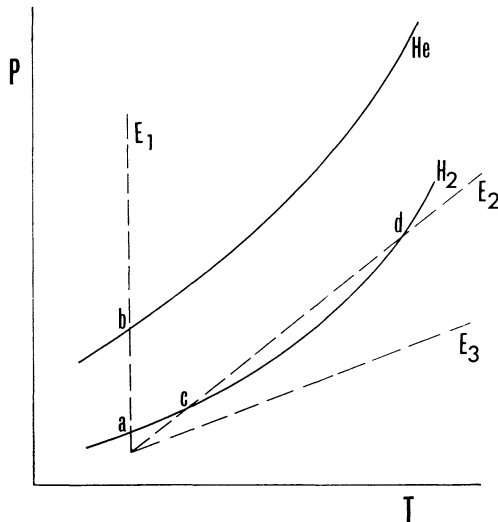


Fig. 2. Pressure-temperature diagram showing the melting curves of hydrogen and helium (H_2 and He), and several equations of path (E_1, E_2, E_3) representing different temperature gradients in a planetary atmosphere.

* The limiting boundaries, in P - T space, for two-phase regions in a two-component system are defined by lines representing conditions of a single degree of freedom. These include three phase lines and critical lines, in addition to the pure component phase boundaries (melting curves, etc.) shown in Figure 1. A more complete discussion of phase diagrams in this context has been presented elsewhere (Streett, 1969; Streett and Hill, 1970).

The planet would be entirely solid at pressures above b and fluid at pressures below a . Lines E_2 and E_3 represent equations of path for which there are temperature gradients. If the gradient is large, as in E_3 , solidification does not occur, and the planet remains fluid throughout. For the intermediate case, E_2 , a region $c-d$ exists in which solid and fluid phases may coexist (in thermodynamic equilibrium), while the planet is entirely fluid above and below.

3. Gravitational Separation of Solid Fluid Phases

Within the region of phase separation, coexisting phases would tend to separate in the gravitational field, producing a layered structure. At first glance, it seems natural to assume that the solid phase, being more dense than the fluid, would sink to the solid surface. A closer examination, however, suggests that this is not necessarily the case for a mixture of H_2 and He. In the case of a pure substance, such as H_2 , solidification is accompanied by a slight increase in density as a result of the more efficient packing of the molecules in an ordered lattice structure. Although a similar density increase results from solidification in a mixture, the relative densities of the two phases will be determined largely by their compositions, due to the large difference in the densities of the pure components. The H_2 -He system belongs to an unusual class of binary mixtures, in which the more volatile component (He) has the higher molecular weight, and is therefore more dense, at high pressures, than the second component, even though the former may be a gas and the latter a solid or liquid in the pure state. (The estimated density of He at high pressures exceeds that of H_2 by a factor of 3 or more (DeMarcus, 1958).) The result is that a reversal in the sign of the density difference between two coexisting phases occurs with increasing pressure at a fixed temperature. This behavior – known as the barotropic phenomenon – was first observed for gas-liquid mixtures of H_2 -He by Kamerlingh-Onnes (1906). He observed that if a gas-liquid mixture of H_2 -He is compressed at a temperature of about 20 K, the density of the gas phase (which is mostly He) exceeds that of the liquid phase (which is mostly H_2) at pressures above about 30 atm. As the pressure passes through this value, the liquid phase rises up and floats on top of the gas phase. Similar behavior has been observed in other binary mixtures in which the more volatile component has the higher molecular weight, such as N_2 - NH_3 (Krichevskii, 1940) and CO_2 - H_2O (Takenouchi and Kennedy, 1964).

4. Phase Behavior of H_2 -He Mixtures at High Pressures

Although the behavior described above has not been observed experimentally in gas-solid mixtures of H_2 -He, it almost certainly does occur. The equality of density between two phases in a two-component system reduces the number of degrees of freedom to one, and the locus of equal density points appears as a line on the P - T diagram of the system. The probable location of this line can be found if the shape of the phase boundary curves in pressure-composition space are known. Although experimental data on the phase behavior of light gas mixtures at high pressures are meager,

the available evidence (Tsiklis, 1946; Strett and Hill, 1970) suggests that the isothermal pressure-composition (P - X) diagram for a mixture of H_2 -He will have the form shown in Figure 3.* Area F is a region in which a single homogeneous fluid phase exists, while S_1 and S_2 are regions in which a single solid phase exists. S_1 is a H_2 -rich solid and S_2 a He-rich solid. The remaining areas ($S_1 + F$, $S_2 + F$, and $S_1 + S_2$) are regions in which two phases coexist in equilibrium. The behavior illustrated in this diagram is that of a binary mixture in which the components are completely miscible in the fluid phase (F), but solidify to form partially miscible solid phases (S_1 and S_2).

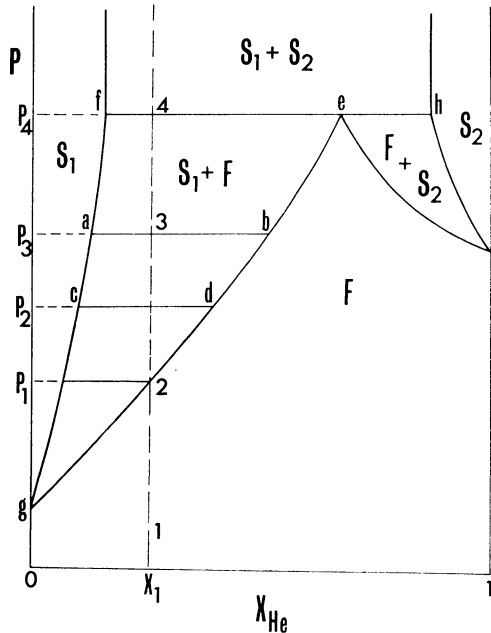


Fig. 3. Suggested pressure-composition diagram for H_2 -He mixtures at constant temperature.

5. Proposed Structure for H_2 -He Atmosphere

The sequence of thermodynamic states encountered in descending into the atmosphere of a body of overall composition X_1 would lie along an ascending vertical line 1-2-3-4 in Figure 3. At pressures below P_1 (point 2) a homogeneous fluid phase exists, while at pressures above P_4 (point 4) a mixture of two solid phases exists. P_4 therefore corresponds to the approximate depth of the solid surface. At any pressure between P_1 and P_4 the mixture separates into solid and fluid phases whose compositions are found at points where a horizontal line, at that pressure, intersects the phase boundary lines g - c - a - f and g - d - b - e . At pressure P_3 , for example, the mixture of overall composition X_1 separates into a solid phase a and fluid phase b . It is of interest to consider

* There is some evidence (Sneed *et al.*, 1968; Strett and Hill, 1970) that H_2 -He mixtures may separate into two distinct fluid phases at high pressures. This would result in a more complicated phase diagram and would lead to a more complex atmospheric structure (Strett, 1969).

the relative densities of the coexisting phases defined by the lines g-c-a-f and g-d-b-e. At pressures just above g (the melting pressure of pure H₂) the fluid phase is only slightly richer in He than the solid phase, and the latter is likely to be more dense by virtue of the volume decrease accompanying solidification. At higher pressures, however, the fluid phase is likely to be more dense by virtue of its higher He content. An example will illustrate this point. At a pressure of 10 kilobars DeMarcus (1958) estimates the molar volumes of cold H₂ and He to be 7.3 and 4.3 cm³/mole respectively. If these values are taken for the component molar volumes in the solid phase, and values, say, 5% greater for the fluid phase, it can be shown that the fluid will be more dense than the solid if its He content is greater by about fifteen mole percent. Then there must exist a pressure P_2 – the barotropic pressure – at which the coexisting phases c and d have equal densities. At pressures below P_2 the solid is more dense, and above P_2 the fluid is more dense. In this situation the solid phases, which condense

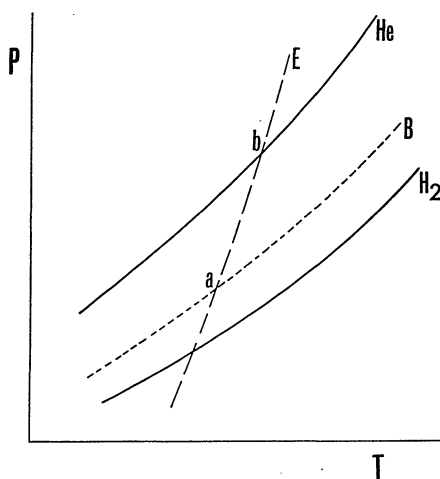


Fig. 4. Pressure-temperature diagram showing the melting curves of hydrogen and helium (H₂ and He), the barotropic line (B) at which the solid and fluid phases have equal density, and the equation of path (E) of a planetary atmosphere.

between P_1 and P_4 , will gravitate toward the level corresponding to P_2 , both from above and below. Through slow diffusion within these solids, their compositions would eventually reach the value c and they would remain suspended in dynamic and thermodynamic equilibrium with the surrounding fluid of composition d. In other words, the solid phase would behave as a thermodynamic Cartesian diver.

Consideration of the relative densities and compositions of the phases, and the effect of gravity, leads to an equilibrium structure with the following characteristics:

- (1) the atmosphere above the level of P_2 has a uniform composition d;
- (2) masses of H₂-rich solid, of composition c, float at the level corresponding to P_2 , in equilibrium with the fluid d;
- (3) at low levels, the fluid composition varies with depth and pressure along the lines d-b-e; and

(4) at the level corresponding to P_4 a solid surface exists, consisting of a mixture of two solid phases f and h , whose average density exceeds that of the fluid e in contact with it.

This structure has been derived for the special case of an isothermal atmosphere; however, because the phase diagram is likely to have the same form at higher temperatures, the same structure might exist in the presence of a temperature gradient. The locus of points at which the solid and fluid phases have equal densities – the barotropic curve – would appear as a line in the P - T diagram, approximately parallel to, and lying above, the melting curve of H_2 , as shown in Figure 4. For an equation of path such as E , floating masses of H_2 -rich solid exist at the level of point a , and the solid surface lies in the vicinity of b . Extrapolations of the melting curves of H_2 and He to high pressures suggest that, for temperatures of the order of a few hundred degrees, point a in Figure 4 would lie at a depth of about 800 km and point b at a depth of

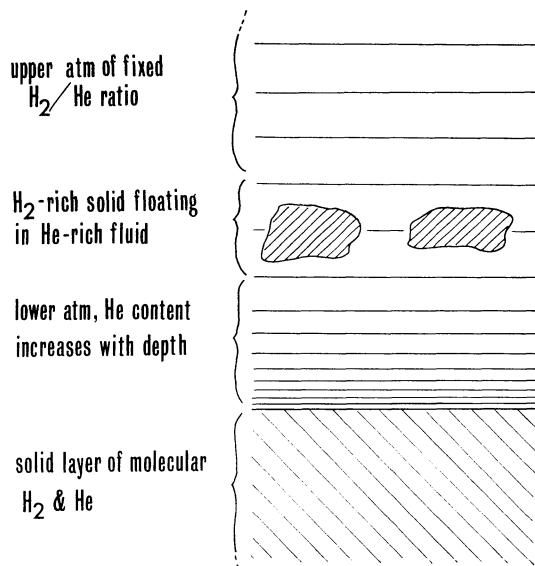


Fig. 5. Proposed structure for H_2 - He atmosphere, based on the phase diagram of Figure 3.

about 1600 km, below the visible surface of Jupiter. A graphic picture of the structure suggested here is shown in Figure 5. The relevance of this picture to the floating raft concept of the Red Spot is immediately obvious.

6. A New Hypothesis for Jupiter's Red Spot

The structure suggested by Figure 5 forms the basis of a new hypothesis – called the Cartesian diver hypothesis – which seeks to explain the physical nature and observed variations in longitude, size, and intensity of the Red Spot. The following is a brief summary of this hypothesis; full details will be published elsewhere (Streett *et al.*, 1971).

According to the Cartesian diver hypothesis, the Red Spot is a region of contrast in the cloud structure of Jupiter's outer layers, caused by the presence of a mass of H_2 -rich solid (the diver) floating within a fluid layer of H_2 and He at some depth below the visible surface. The resulting physical model thus includes some of the qualitative features of both a floating raft and a Taylor column. It can be shown that the floating solid behaves as a thermodynamically stabilized Cartesian diver: that is, as a floating object which seeks an equilibrium level within a fluid layer. In the case of the Red Spot the floating solid is not necessarily continuous, and, indeed, it is unlikely to be so.

Equations of motion of a stable Cartesian diver in a rotating system suggest that the longitudinal motion of the Red Spot consists of several periodic components of different amplitudes and frequencies. These predictions are in agreement with the conclusions of Solberg (1968) based on recent precise measurements of Red Spot longitude. When the effects of rapid rotation of the planet upon the dynamic behavior of the fluid in the vicinity of the Cartesian diver are included, the resulting physical model provides a qualitative explanation not only for the observed variations in size and intensity of the Red Spot, but also for the manner in which these variations correlate with changes in longitude.

7. Conclusions

Only a few of the more obvious consequences of phase separations in H_2 -He mixtures at high pressures have been considered here. From a chemical standpoint, the most pressing need is for experimental data on the phase behavior and equation of state of H_2 -He mixtures at high pressures. The available data for this system (Sneed *et al.*, 1969) are insufficient even to suggest a choice between several possible extrapolations of the phase diagram to high pressures. It is clear that knowledge of the phase behavior of H_2 -He mixtures at high pressures will be valuable, not only for understanding the deep atmosphere structures, but also for interpreting correctly some of the direct observational data for the upper atmosphere. We are preparing to carry out experimental studies of phase behavior in H_2 -He mixtures at pressures up to 10 kilobars. The results will be reported in due course.

Acknowledgment

The author is indebted to R. Wildt of Yale University for several useful discussions relating to this work.

References

- DeMarcus, W. C.: 1958, *Astron. J.* **63**, 2.
Kamerlingh-Onnes, H. and Keesom, W. H.: 1906, *Comms. Phys. Lab. Univ. Leiden*, No. 96a, 96b, 96c.
Krichevskii, I. R.: 1940, *J. Phys. Chem. (U.S.S.R.)* **12**, 480.
Öpik, E. J.: 1962, *Icarus* **1**, 200.

- Peebles, P. J. E.: 1964, *Astrophys. J.* **140**, 328.
- Peek, B. M.: 1958, in *The Planet Jupiter*, Faber and Faber, London, Chapter 19.
- Reese, E. J. and Solberg, H. G.: 1969, *Latitude and Longitude Measurements of Jovian Features in 1967-68*, U.S. Government Research and Development Report N69-26410.
- Sneed, C. M., Sonntag, R. E., and Van Wylen, G. J.: 1968, *J. Chem. Phys.* **49**, 2410.
- Solberg, H. G.: 1968, *Icarus* **8**, 82.
- Streett, W. B.: 1969, *J. Atmospheric Sci.* **26**, 924.
- Streett, W. B. and Hill, J. L. E.: 1970, in *J. Chem. Phys.* **52**, 1402.
- Streett, W. B., Ringermacher, H. I., and Veronis, G.: 1971, submitted to *Icarus*.
- Takenouchi, S. and Kennedy, G. C.: 1964, *Am. J. Sci.* **262**, 1055.
- Tsiklis, D. S.: 1946, *J. Phys. Chem. (U.S.S.R.)* **20**, 181.

Question following Dr. Streett's paper

Question: Can you state more accurately the pressures at which solids might be floating about in Jupiter's atmosphere?

Streett: No. In addition to our ignorance about the melting behavior of H₂ and He at high pressures and temperatures, we have very little information about temperatures of the regions beneath the clouds which make up Jupiter's visible surface. For temperatures of the order of, say, 1000 K, the estimated melting pressures of H₂ and He are 460 kilobars and 800 kilobars, but these are based on extrapolations of experimental data which extend to temperatures of only about 100 K and pressures of about 20 kilobars.