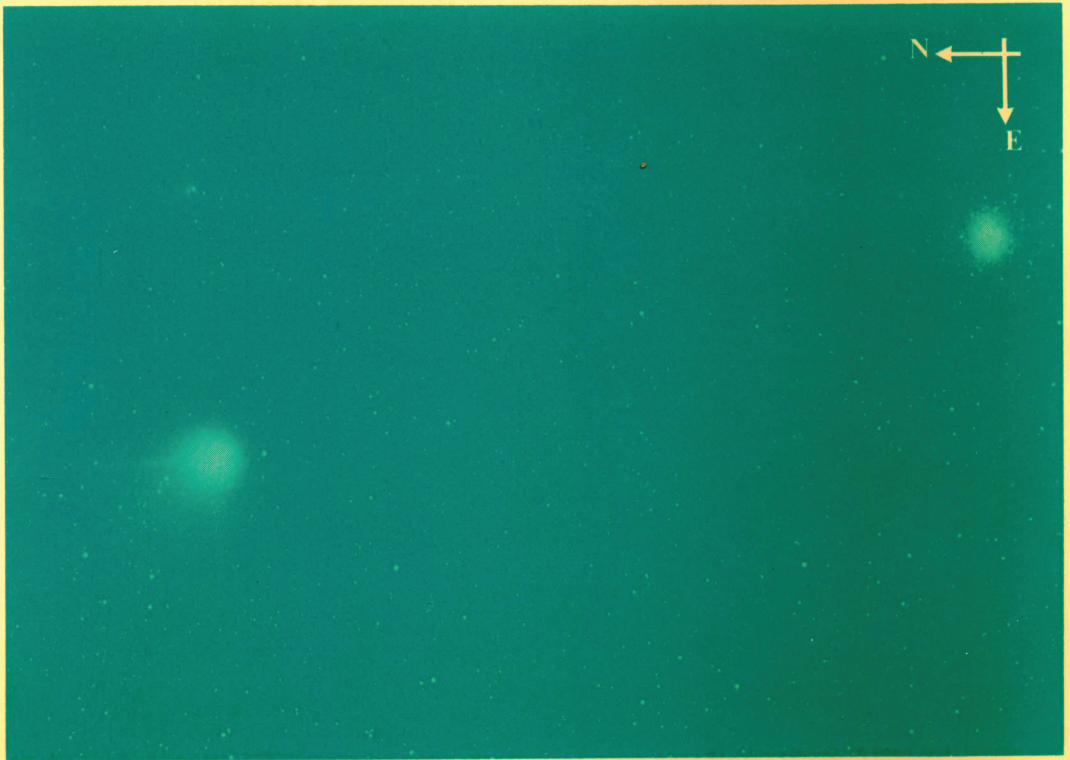


INTERNATIONAL ASTRONOMICAL UNION

SYMPOSIUM No. 126

THE HARLOW-SHAPLEY SYMPOSIUM ON GLOBULAR CLUSTER SYSTEMS IN GALAXIES

Edited by JONATHAN E. GRINDLAY and A. G. DAVIS PHILIP



INTERNATIONAL ASTRONOMICAL UNION

KLUWER ACADEMIC PUBLISHERS

THE HARLOW-SHAPLEY SYMPOSIUM ON GLOBULAR CLUSTER
SYSTEMS IN GALAXIES

The cover photo is Schmidt camera view of Halley's comet, the galaxy Centaurus-A (with its globular cluster system) and the galactic globular Omega Centauri.

It was taken by William Liller, Instituto Isaac Newton, Ministerio de Education de Chile, on April 14.513, 1986, as part of NASA's International Halley Watch, Large Scale Phenomena Section. The telescope was a 20-centimeter *f*/1.5 Schmidt operated by Liller on Easter Island. The combined view of the most massive globular in the Galaxy with one of the most studied external galaxies and globular cluster systems is a fitting reminder of the themes of the IAU 126 Symposium. The simultaneous view of Halley's comet records the year of the meeting and the centennial year of Harlow Shapley's birth.

INTERNATIONAL ASTRONOMICAL UNION
UNION ASTRONOMIQUE INTERNATIONALE

THE HARLOW-SHAPLEY SYMPOSIUM ON GLOBULAR CLUSTER SYSTEMS IN GALAXIES

PROCEEDINGS OF THE 126TH SYMPOSIUM OF THE
INTERNATIONAL ASTRONOMICAL UNION,
HELD IN CAMBRIDGE, MASSACHUSETTS, U.S.A.,
AUGUST 25-29, 1986

Edited by

JONATHAN E. GRINDLAY
*Harvard-Smithsonian Center for Astrophysics,
Cambridge, Massachusetts, U.S.A.*

and

A. G. DAVIS PHILIP
*Van Vleck Observatory and Union College,
Schenectady, New York, U.S.A.*



KLUWER ACADEMIC PUBLISHERS

DORDRECHT / BOSTON / LONDON



Library of Congress Cataloging in Publication Data
Harlow Shapley Symposium on Globular Cluster Systems in Galaxies (1986: Cambridge,
Mass.)

CIP

The Harlow Shapley Symposium on Globular Cluster Systems in Galaxies: proceedings of
the 126th symposium of the International Astronomical Union, held in Cambridge,
Massachusetts, August 25–29, 1986 / edited by Jonathan E. Grindlay and A. G. Davis Philip.

p. cm.

At head of title: International Astronomical Union.

Includes bibliographies and index.

ISBN 90–277–2664–7. ISBN 90–277–2665–5 (pbk.)

1. Stars—Globular clusters—Congresses. 2. Shapley, Harlow, 1885–1972—
Congresses. I. Grindlay, Jonathan E. II. Philip, A. G. Davis. III. Shapley, Harlow,
1885–1972. IV. International Astronomical Union. V. Title.

QB853.H37 1986

523.8'55—dc 19

87–35637

CIP

*Published on behalf of
the International Astronomical Union
by
Kluwer Academic Publishers, P.O. Box 17, 3300 AA Dordrecht, Holland.*

*Kluwer Academic Publishers incorporates
the publishing programmes of
D. Reidel, Martinus Nijhoff, Dr W. Junk and MTP Press.*

*Sold and distributed in the U.S.A. and Canada
by Kluwer Academic Publishers,
101 Philip Drive, Norwell, MA 02061, U.S.A.*

*In all other countries, sold and distributed
by Kluwer Academic Publishers Group,
P.O. Box 322, 3300 AH Dordrecht, Holland.*

*All Rights Reserved
© 1988 by the International Astronomical Union*

*No part of the material protected by this copyright notice may be reproduced or
utilized in any form or by any means, electronic or mechanical, including photo-
copying, recording or by any information storage and retrieval system, without
written permission from the publisher.*

Printed in The Netherlands

TABLE OF CONTENTS

Preface	xvii
List of Participants	xxiii
Conference Photo	xxviii
List of Photos of Participants and Special Figures	xxx
<u>CHAPTER I REVIEW PAPERS ON HARLOW SHAPLEY</u>	
Session Chair: M. McCarthy	1
SHAPLEY'S DEBATE	
Michael Hoskin	3
SHAPLEY'S ERA	
Helen Sawyer Hogg	11
SHAPLEY'S IMPACT	
Owen Gingerich	23
<u>CHAPTER II REVIEW PAPERS ON GLOBULAR CLUSTERS IN THE MILKY WAY</u>	
Session Chairs: R. McClure, J. Cohen, and J. Norris	35
AN OVERVIEW OF THE GLOBULAR CLUSTER SYSTEM OF THE GALAXY	
Robert Zinn	37
KINEMATICS OF THE GALACTIC GLOBULAR CLUSTER SYSTEM	
R. F. Webbink	49
GLOBULAR CLUSTER COLOR-MAGNITUDE DIAGRAMS	
James E. Hesser	61
THE OVERALL ABUNDANCES OF GLOBULAR CLUSTERS	
R. A. Bell	79
THE CHEMICAL INHOMOGENEITY WITHIN GLOBULAR CLUSTERS	
John Norris	93
AGES OF THE GALACTIC GLOBULAR CLUSTERS	
Don A. Vandenberg	107
GLOBULAR CLUSTER LUMINOSITY FUNCTIONS	
Pierre Demarque	121

GLOBULAR CLUSTERS AND FIELD HALO STARS Bruce W. Carney	133
<u>CHAPTER III: REVIEW PAPERS ON GLOBULAR CLUSTERS IN NEARBY GALAXIES</u>	
Session Chairs: G. Wallerstein, J. Watanabe and V. Straizys	149
OLD GLOBULAR CLUSTERS IN THE MAGELLANIC CLOUDS J. A. Graham	151
INTERMEDIATE-AGE MAGELLANIC CLOUD GLOBULAR CLUSTERS Edward W. Olszewski	159
M 31 CLUSTER SYSTEM F. Fusi Pecci	173
THE CLUSTERS OF M 33 C. A. Christian	187
THE NGC 5128 CLUSTER SYSTEM Hugh C. Harris, Gretchen L. H. Harris and James E. Hesser	205
DWARF SPHEROIDAL GALAXIES AND GLOBULAR CLUSTERS G. S. Da Costa	217
AN OVERVIEW OF GLOBULAR SYSTEMS IN DISTANT GALAXIES William E. Harris	237
THE M 87 GLOBULAR CLUSTER SYSTEM John Huchra	255
<u>CHAPTER IV REVIEW PAPERS ON EVOLUTION OF GLOBULAR CLUSTERS</u>	
Session Chairs: V. Trimble, H. Zinnecker, M. Aurière and J. Goodman	269
THE EVOLUTION OF THE SYSTEM OF GLOBULAR CLUSTERS Jeremiah P. Ostriker	271
TIDAL HEATING OF GLOBULAR CLUSTERS David Chernoff and Stuart L. Shapiro	283
CLUSTER SWAPPING Juan C. Muzzio	297
GALAXY FORMATION AND CLUSTER FORMATION Richard B. Larson	311

THE ORIGIN OF GLOBULAR CLUSTERS S. Michael Fall and Martin J. Rees	323
SURFACE PHOTOMETRY OF GLOBULAR CLUSTERS S. Djorgovski	333
X-RAY BINARIES AND CLUSTER EVOLUTION Jonathan E. Grindlay	347
PRECOLLAPSE EVOLUTION OF GLOBULAR CLUSTERS Shogo Inagaki	367
AFTER CORE COLLAPSE, WHAT? Haldan Cohn	379
DISOLUTION OF STAR CLUSTERS IN GALAXIES Roland Wielen	393
<u>CHAPTER V REVIEW PAPERS ON GLOBULAR CLUSTERS AS TRACERS AND HST</u>	
Session Chairs: M. Rees and Y. Gnedin	409
INTERSTELLAR MATTER IN GLOBULAR CLUSTERS Morton S. Roberts	411
GLOBULAR CLUSTERS AS TRACERS OF THE GALAXY MASS DISTRIBUTION K. A. Innanen	423
GLOBULAR CLUSTERS AND PRIMORDIAL COMPOSITION Roger Cayrel	431
STELLAR EVOLUTION IN GLOBULAR CLUSTERS AND HST Alvio Renzini	443
SIMULATIONS OF HST OBSERVATIONS OF GLOBULAR CLUSTERS John N. Bahcall and Donald P. Schneider	455
<u>CHAPTER VI REVIEW PAPERS SUMMARY</u>	
Session Chair: J. Grindlay	465
GLOBULAR CLUSTER SYSTEMS IN GALAXIES: MAIN TRENDS AND FUTURE DIRECTIONS Sidney van den Bergh	467
<u>CHAPTER VII POSTER PAPERS ON HARLOW SHAPLEY AND GLOBULAR CLUSTERS IN THE MILKY WAY</u>	
Discussion Leaders: M. McCarthy and C. Pilachowski	475

HARLOW SHAPLEY: A VIEW FROM THE HARVARD ARCHIVES Barbara L. Welther	477
HARLOW SHAPLEY AND THE UNIVERSITY OF MISSOURI Charles J. Peterson	479
HARLOW SHAPLEY AND RED GIANT STARS Martin F. McCarthy S. J.	481
THE DEVELOPMENT OF A RED-GIANT BRANCH IN LOW TO INTERMEDIATE MASS STARS A. V. Sweigart, L. Greggio and A. Renzini	483
NEW MAIN-SEQUENCE LUMINOSITY FUNCTIONS FOR GLOBULAR CLUSTERS Robert D. McClure, Peter B. Stetson, James E. Hesser, Graham H. Smith, William E. Harris and Don A. Vandenberg	485
GLOBAL VERSUS LOCAL MASS FUNCTIONS Ivan R. King	487
A NEW SURVEY OF GLOBULAR CLUSTER STRUCTURAL AND LUMINOSITY PARAMETERS B. Cameron Reed and Charles J. Peterson	489
AXIAL RATIOS AND ORIENTATIONS FOR 100 GALACTIC GLOBULAR STAR CLUSTERS Raymond E. White and Stephen J. Shawl	491
ABUNDANCES IN STARS IN GLOBULAR CLUSTERS FROM PALOMAR CCD SPECTRA E. Myckki Leep, George Wallerstein and J. B. Oke	493
THE METAL ABUNDANCE OF METAL-RICH GLOBULAR CLUSTERS Raffaele Gratton, Maria Lucia Quarta and Sergio Ortolani	495
THE COMPOSITION OF WARM GIANTS IN M 71 AND M 5 Catherine A. Pilachowski and Christopher Sneden	497
THE INTEGRATED SPECTRA OF METAL-RICH GALACTIC GLOBULAR CLUSTERS: A TWO-PARAMETER FAMILY James A. Rose and Michael J. Tripicco	499
IUE INVESTIGATIONS AT THE CORE OF M 79 Bruce Altner	501
ONE-MICRON PHOTOMETRY OF OMEGA CENTAURI GIANTS Graeme H. Smith	503

ON THE BIMODAL DISTRIBUTIONS OF HORIZONTAL BRANCHES Young-Wook Lee, Pierre Demarque and Robert Zinn	505
BIMODAL DISTRIBUTIONS ON THE HORIZONTAL BRANCH Robert T. Rood and Deborah A. Crocker	507
HORIZONTAL-BRANCH STARS WITH STRONG HE LINES Deborah A. Crocker and Robert T. Rood	509
SPECTRA OF BHB STARS IN M 3, M 13 AND M 92 A. G. Davis Philip and N. N. Samus	511
FOUR-COLOR MEASURES OF BHB STARS IN M 4, M 13 AND M 55 A. G. Davis Philip	513
GLOBULAR CLUSTERS IN THE VILNIUS PHOTOMETRIC SYSTEM K. Zdanavičius	515
THE METALLICITY DISTRIBUTION FUNCTION OF HALO DWARFS AND GLOBULAR CLUSTERS J. B. Laird, M. P. Rupin, B. W. Carney, D. W. Latham and R. L. Kurucz	517
THE SIMILARITY OF THE HALO FIELD K GIANT POPULATION WITH THE GLOBULAR CLUSTER SYSTEM OF OUR GALAXY Kavan U. Ratnatunga	519
APPARENT ROTATION OF THE GALACTIC GLOBULAR CLUSTER SYSTEM J. Colin	521
ASTROMETRIC DISTANCES OF GLOBULAR CLUSTERS Kyle Cudworth and Ruth C. Peterson	523
ABSOLUTE PROPER MOTIONS AND SPACE MOTIONS OF GLOBULAR CLUSTERS H.-J. Tuchcolke, P. Brosche and M. Geffert	525
A SEARCH FOR OBSCURED GLOBULAR CLUSTERS S. Djorgovski	527
ON THE COLOR EXCESSES OF GLOBULAR CLUSTERS V. Straižys and R. Janulis	529
FIRST POSTER PAPER DISCUSSION	531
<u>CHAPTER VIII POSTER PAPERS ON CLUSTER SYSTEMS IN NEARBY GALAXIES</u>	
Discussion Leader: G. Lyngå	539
A SEARCH FOR GLOBULAR CLUSTER CANDIDATES IN NGC 2403 M. L. Malagnini, P. Santin, F. Bonoli, L. Federici, F. Fusi Pecci and R. G. Kron	541

SEARCH FOR GLOBULAR CLUSTERS IN THE NEARBY GALAXIES II. NGC 3109	
A. Blecha	543
A COMPLETE SAMPLE OF GLOBULAR CLUSTERS IN NGC 5128	
Ray Sharples	545
ASTRONOMICAL CATALOGUES IN THE M 31 REGION	
P. Battistini	547
THE BLUE STAR CLUSTERS OF M 31	
Paul Hodge	549
SPATIAL DISTRIBUTION OF GLOBULAR CLUSTERS IN M 31	
Jun-ichi Watanabe and Tomohiko Yamagata	551
FORMATION OF POPULOUS CLUSTERS FROM METAL-POOR GAS IN THE MAGELLANIC CLOUDS	
T. Richtler and W. Seggewiss	553
THE DEVELOPMENT OF THE RED GIANT BRANCH IN MAGELLANIC CLOUD CLUSTERS: PROGRESS REPORT	
R. Buonanno, C. E. Corsi, F. Fusi Pecci, L. Greggio, A. Renzini and A. V. Sweigart	555
THE AGE DISTRIBUTION AND AGE-METALLICITY RELATION OF STAR CLUSTERS IN A NORTHERN REGION OF THE LMC	
Mario Mateo	557
PHOTOMETRIC MODELS FOR GLOBULAR CLUSTERS FROM POPULATION SYNTHESIS	
R. Capuzzo Dolcetta	559
BVRI PHOTOMETRY OF STAR CLUSTERS IN THE BOK REGION OF THE LARGE MAGELLANIC CLOUD	
William Liller and Gonzalo Alcaïno	561
AGES AND METAL ABUNDANCES OF STAR CLUSTERS IN THE MAGELLANIC CLOUDS	
Horace A. Smith, Leonard Searle and Armando Manduca	563
INTERNAL DYNAMICS OF MAGELLANIC CLOUD CLUSTERS	
Paul Papenhausen and R. A. Schommer	565
DO BINARY CLUSTERS EXIST IN THE LARGE MAGELLANIC CLOUD?	
D. Hatzidimitriou and R. K. Bhatia	567
ELLIPTICITIES OF GLOBULAR CLUSTERS IN THE ANDROMEDA GALAXY	
Nedka M. Spassova, Anelia V. Staneva and Valery K. Golev	569

OBSERVED VARIATIONS IN THE DENSITY PROFILES OF STAR CLUSTERS IN THE LMC M. Kontizas, D. Hatzidimitriou and M. Metaxa	571
RATIO OF EARLY TO LATE TYPE STARS IN SMC CLUSTERS E. Kontizas, M. Kontizas, A. Dapergolas and D. Hatzidimitriou	573
THE SMC CLUSTER LINDSAY 11 J. Buttress, R. D. Cannon and W. K. Griffiths	575
ABUNDANCES OF YOUNG LMC CLUSTERS R. A. Schommer and Doug Geisler	577
THE ABUNDANCE OF THE LMC GLOBULAR CLUSTER NGC 2213 Doug Geisler	579
DEEP PHOTOMETRY OF THE DRACO DWARF SPHEROIDAL GALAXY Bruce W. Carney and P. Seitzer	581
CCD PHOTOMETRY IN THE CORE OF THE FORNAX DWARF GALAXY Robert M. Light and P. Seitzer	583
A CANDIDATE FOR THE RECOVERED NOVA OF 1938 IN THE GLOBULAR CLUSTER M 14 Michael M. Shara, Michael Potter, Anthony F. J. Moffat, Helen Sawyer Hogg and Amelia Wehlau	585
THE ABSOLUTE LUMINOSITY OF RR LYRAE VARIABLES C. Cacciari, G. Clementini and L. Prevot	587
THE DISTANCES TO RR LYRAE VARIABLES Rodney V. Jones, Bruce W. Carney, David W. Latham and Robert L. Kurucz	589
DOUBLE-MODE RR LYRAE STARS IN IC 4499 Christine M. Clement, James M. Nemec, Robert J. Dickens, Elizabeth A. Bingham	591
SHORT-PERIOD VARIABLES IN GLOBULAR CLUSTERS OF MODERATE METALLICITY Martha L. Hazen	593
SECOND POSTER PAPER DISCUSSION	595
<u>CHAPTER IX: POSTER PAPERS ON CLUSTER SYSTEMS IN DISTANT GALAXIES, DEEP PHOTOMETRY AND CM DIAGRAMS</u>	
Discussion Leader: D. Hanes	601
THE NUCLEI OF NUCLEATED DWARF ELLIPTICAL GALAXIES - ARE THEY GLOBULAR CLUSTERS?	

H. Zinnecker, C. J. Keable, J. S. Dunlop, R. D. Cannon and W. K. Griffiths	603
THE GLOBULAR CLUSTER SYSTEM OF M 87 Judith G. Cohen	605
THE CORE OF THE M 87 GLOBULAR CLUSTER SYSTEM Tod R. Lauer and John Kormendy	607
U PHOTOMETRY OF GLOBULAR CLUSTERS IN THE CENTRAL REGION OF M 87 E. V. Held and J.-L. Nieto	609
GLOBULAR CLUSTERS DETECTED IN THE COMA CLUSTER'S CENTRAL GIANT GALAXY NGC 4874 Laird A. Thompson and F. Valdes	611
GLOBULAR CLUSTERS IN DIFFERENT TYPES OF SPIRAL GALAXIES Hugh C. Harris, Gregory D. Bothun and James E. Hesser	613
GLOBULAR CLUSTERS IN LENTICULAR GALAXIES: NGC 3115 E. V. Held and M. Capaccioli	615
GLOBULAR CLUSTERS AS EXTRAGALACTIC DISTANCE INDICATORS: MAXIMUM LIKELIHOOD METHODS David A. Hanes and Donna G. Whittaker	617
PHOTOMETRY OF FAINT STARS IN GLOBULAR CLUSTERS USING THE SIX METER TELESCOPE N. N. Samus	619
HIGH PRECISION PHOTOMETRY OF 10,000 STARS IN M 3 R. Buonanno, A. Buzzoni, C. E. Corsi, F. Fusi Pecci and A. R. Sandage	621
DEEP CCD PHOTOMETRY IN M 5 Harvey B. Richer and Gregory G. Fahlman	623
PHOTOGRAPHIC PHOTOMETRY OF 4500 STARS IN M 30 G. Piotto, M. Capaccioli, S. Ortolani, L. Rosino, G. Alcaino and W. Liller	625
AN AUTOMATED HR DIAGRAM FOR NGC 6809 (M 55) Michael J. Irwin and Virginia Trimble	627
DEEP CCD PHOTOMETRY IN OMEGA CENTAURI AND NGC 3201 S. Ortolani	629
DEEP CCD PHOTOMETRY OF OMEGA CENTAURI R. G. Noble, J. Buttress, W. K. Griffiths, A. J. Penny, R. J. Dickens and R. D. Cannon	631

THE AGES OF GLOBULAR CLUSTERS DERIVED FROM BVRI CCD PHOTOMETRY Gonzalo Alcaïno and William Liller	633
TURNOFFS AND AGES OF GLOBULAR CLUSTERS R. Buonanno, C. E. Corsi and F. Fusi Pecci	635
THE DYNAMICS OF GLOBULAR CLUSTERS IN HIGH ECCENTRICITY ORBITS R. K. Bhatia	637
MASS DISTRIBUTIONS OF GALAXIES WITH GLOBULAR CLUSTER SYSTEMS Kazutomo Takayanagi	639
THE DYNAMICS OF GLOBULAR CLUSTER SYSTEMS Natarajan Ramamani	641
THIRD POSTER PAPER DISCUSSION	643
<u>CHAPTER X POSTER PAPERS ON FORMATION AND EVOLUTION OF GLOBULAR CLUSTERS</u>	
Discussion Leader: I. King	653
A MULTICOLOR CCD SURVEY OF SOUTHERN GLOBULAR CLUSTERS Juan Forte and Mariano Méndez	655
THE STRUCTURE OF COLLAPSED CLUSTER CORES Phyllis M. Lugger, Haldan Cohn, Jonathan E. Grindlay, Charles D. Bailyn and Paul Hertz	657
RADIAL VELOCITY STUDY OF NGC 6712 J. Grindlay, C. Bailyn, R. Mathieu and D. Latham	659
A SURVEY OF GLOBULAR CLUSTER VELOCITY DISPERSIONS Carlton Pryor, Robert D. McClure, J. M. Fletcher and James E. Hesser	661
ANISOTROPY IN OMEGA CENTAURI AND 47 TUCANAE G. Meylan	663
EVOLUTION OF GLOBULAR CLUSTERS INCLUDING A DEGENERATE COMPONENT Hyung Mok Lee	665
EVOLUTION OF GLOBULAR CLUSTERS WITH TIDALLY-CAPTURED BINARIES THROUGH CORE COLLAPSE Thomas S. Statler, Jeremiah P. Ostriker and Haldan N. Cohn	667

BINARY INTERACTIONS IN STAR CLUSTERS Stephen L. W. McMillan	669
TIDAL EFFECTS ON STELLAR EVOLUTION IN CLOSE BINARIES FORMED IN GLOBULAR CLUSTERS H. M. Antia, A. K. Kembhavi and A. Ray	671
THE EFFECTS OF STELLAR EVOLUTION AND GALACTIC TIDES ON GLOBULAR CLUSTER EVOLUTION D. F. Chernoff, M. D. Weinberg and S. L. Shapiro	673
THE SPATIAL DISTRIBUTION OF SPECTROSCOPIC BINARIES AND BLUE STRAGGLERS IN M 67 Robert D. Mathieu and David W. Latham	675
EVIDENCE FOR MASS SEGREGATION IN NGC 5466 James M. Nemec and Hugh C. Harris	677
ORIGIN AND RADIAL DISTRIBUTION OF FAINT BLUE HORIZONTAL- BRANCH STARS Charles D. Bailyn, Jonathan E. Grindlay, Haldan Cohn and Phyllis M. Lugger	679
VARIABILITY OF OMEGA CENTAURI BLUE STRAGGLERS: CLUES TO THEIR ORIGIN G. S. Da Costa and John Norris	681
A SEARCH FOR OPTICAL COUNTERPARTS OF GLOBULAR CLUSTER X-RAY SOURCES Michel Aurière, Lydie Koch-Miramond, Claude Chevalier, Jean-Pierre Cordoni and Sergio Ilovaisky	683
LOW LUMINOSITY GLOBULAR CLUSTER X-RAY SOURCES Paul Hertz	685
EXOSAT OBSERVATIONS OF OMEGA CENTAURI Lydie Koch-Miramond and Michel Aurière	687
NEW METHODS FOR THE SEARCH FOR HOT GAS IN GLOBULAR CLUSTERS Yu N. Gnedin and T. M. Natsvlishvili	689
RADIAL VELOCITY PROFILES FOR ANISOTROPIC SPHERICALLY SYMMETRIC CLUSTERS: AN EXAMPLE Herwig Dejonghe	691
LINEAR DENSITY WAVES IN GLOBULAR CLUSTERS Yousef Sobouti	693

ON GRAVOTHERMAL OSCILLATIONS Jeremy Goodman	695
COOLING AND FRAGMENTATION OF PROTO-GLOBULAR CLUSTER CLOUDS Francesco Palla and Hans Zinnecker	697
FORMATION OF GLOBULAR CLUSTERS AND THE FIRST STELLAR GENERATION A. Di Fazio	699
FORMATION OF POPULATION III OBJECTS DUE TO COSMIC STRINGS Tetsuya Hara and Shigeru Miyoshi	701
FOURTH POSTER PAPER DISCUSSION	703
RANDOM QUOTES	711
NAME INDEX	715
OBJECT INDEX	723
SUBJECT INDEX	728
ADDRESSES OF PARTICIPANTS	741



Heretofore unpublished portrait of Harlow Shapley, probably from the late 1930's, found by Owen Gingerich in the Harvard University archives.