

## Effect of PM10 and Np-TiO<sub>2</sub> nanoparticles in monocytes

María del Pilar Ramos-Godínez<sup>(1,2)</sup>, Elizabeth Huerta-Gracia<sup>(3)</sup>, Cristhiam Rueda Romero<sup>(1)</sup>, Rebeca López Marure, Ernesto Alfaro Moreno, Angélica Montiel- Dávalos<sup>(1)\*</sup>

<sup>1</sup> Environmental Toxicology Laboratory and <sup>2</sup> Electron Microscopy Laboratory Instituto Nacional de Cancerología, Av san Fernando No. 22 CDMX Cell Biology Laboratory, Instituto Nacional de Cardiología<sup>3</sup>, Vasco de Quiroga, Belisario Domínguez CDMX, Örebro University Sweden<sup>4</sup>.

\*Corresponding autor: acilegnamontiel208@yahoo.com

Air pollution represents a global human health problem, especially in large cities such as Mexico, due to the high concentration of airborne particles (PM), in addition to other pollutants (such as TiO<sub>2</sub>) that each day, exceed the permissible levels. This epidemiological evidence strongly suggests that air PM is associated with a higher morbidity and mortality rate, in respiratory, cardiovascular diseases and cancer development.

The development of these diseases are intensified by the inflammatory response of the organism in trying to eliminate the nano particles[3]. It has been suggested that inhaled particles may induce, systemic inflammatory response[1], through the release of IL-6, TNF, histamine and oxidative stress within the lungs. However, different investigations have shown that some nano particles (PM 10, 2.5 and 1.0) are not detected by cells specialized in eliminating them and therefore are not phagocytosed by them in such a way that these nano particles evade this system of organism defense[3]. The worrying thing is that these nano particles, thus easily access the blood circulation, causing problems in other sites or distant organs. For what we believe is of interest, to study the effect caused by PM10 and nanoparticles of titanium dioxide (NP-TiO<sub>2</sub>) in monocytes, which should be the first line of defense of the organism.

Our results of transmission electron microscopy showed that in the monocytes exposed to NP-TiO<sub>2</sub>, these endocytosed the nano particles in phagosomes, have modifications in nucleus and organelles (Fig1), contrary to what does not happen with PM10. We found in transmission electron microscopy that PM10 is observed adhered to the plasma membrane (Fig2) and despite not showing obvious alterations in monocytes, when measuring the expression of adhesion molecules as sLex at low concentrations (0.001) the activation of its adhesion receptor was detected (Fig3). These data showed us that monocytes, when exposed to minimum concentrations of particulate matter, cause their activation, thus causing the release of pro-inflammatory cytokines that would trigger or intensify the inflammatory response.

In conclusion, the particulate material at very low concentrations is capable of activating human monocytes and increasing the expression of ligands of adhesion molecules, which triggers the increase in adhesion of endothelial cells and monocytes. Increasing the production of interleukins, TNF and ROS production.

### References:

- 1.-Int J Nanomedicine. 2019 Apr 30;14:2995-3013. doi: 10.2147/IJN.S198376. Collection 2019. Pulmonary toxicities from a 90-day chronic inhalation study with carbon black nanoparticles in rats related to the systemical immune effects. Chu C, Zhou L, Xie H, Pei Z, Zhang M, Wu M, Zhang S, Wang L, Zhao C, Shi L, Zhang N, Niu Y
- 2.-Molecules 2018,23, 1955: 1-15 Internalization of Titanium Dioxide Nanoparticles Is Cytotoxic for H9c2 Rat Cardiomyoblasts Elizabeth Huerta-García, Iván Zepeda-Quiroz, Helen Sánchez-Barrera, Zaira Colín-Val, Ernesto Alfaro-Moreno, María del Pilar Ramos-Godínez 3 and Rebeca López-Marure
- 3.-Toxicology in Vitro 2013 774-81 doi: 10.1016/j.tiv.2012.12.010. TiO<sub>2</sub> nanoparticles induce endothelial cell activation in a pneumocyte-endothelial co-culture model. Ramos-Godínez M P., Gonzalez-Gomez B E., Montiel- Dávalos A., López Marure R., Alfaro-Moreno E.

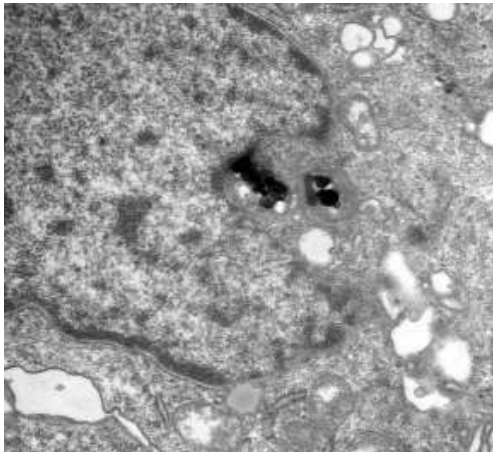


Fig. 1 Internalization of  $\text{TiO}_2$  nano particles in endosomes. It is clearly seen how the  $\text{TiO}_2$  nanoparticle is directed to the nucleus

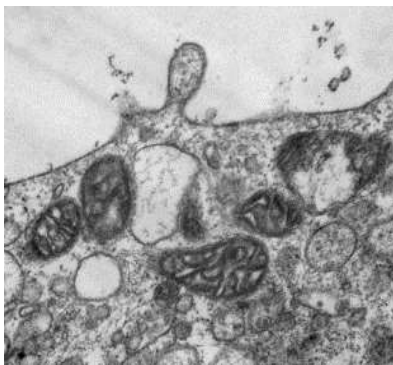


Fig. 2  $\text{PM}_{10}$  adhered to monocyte membrane. The environmental particles adhered to the cytoplasmic membrane are observed.

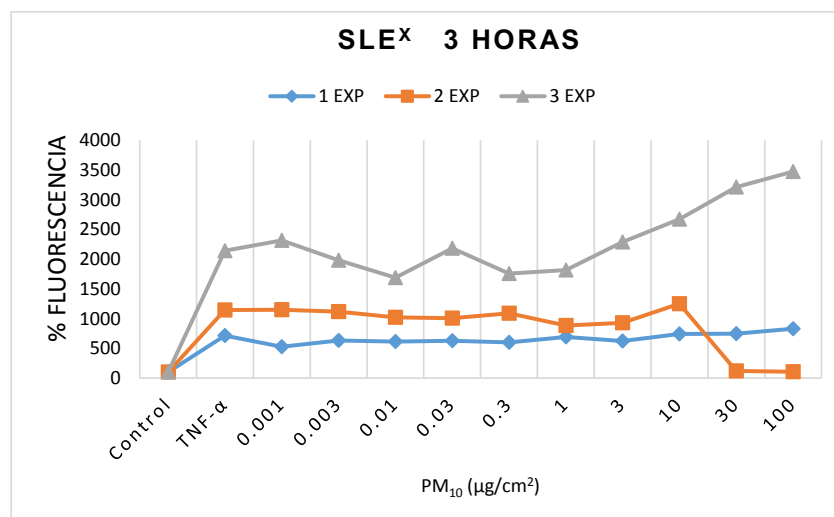


Fig. 3 We observed the expression of the sLex receptor in peripheral blood monocyte cells, exposed 1, 2 and 3, as a positive control  $\text{TNF-}\alpha$  was used.