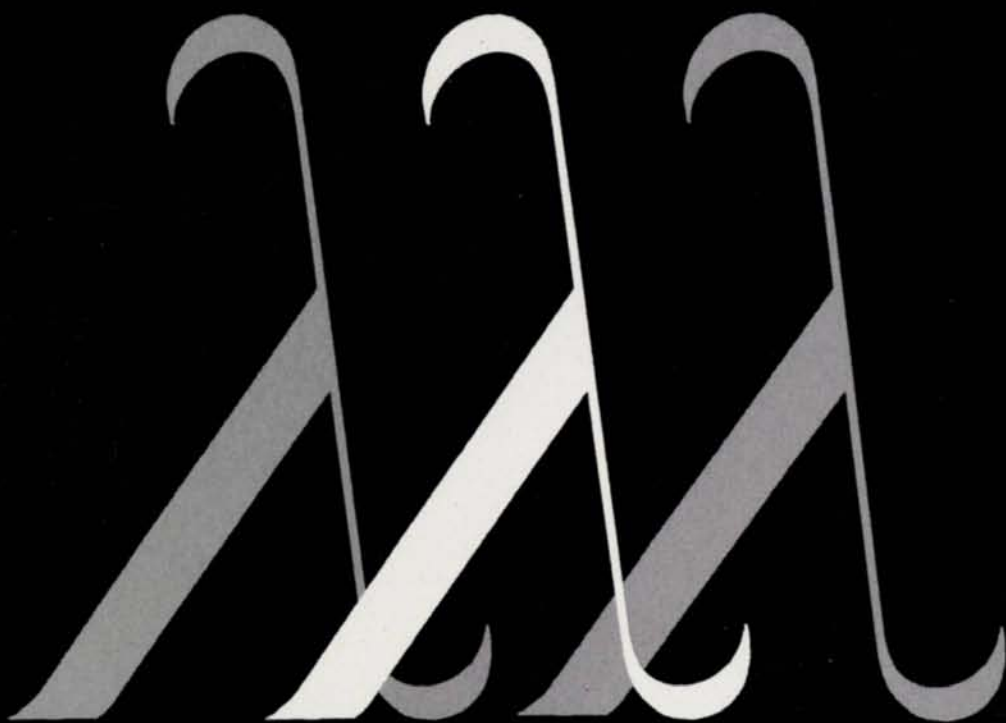


JOURNAL OF  
*Functional Programming*

VOLUME 2 PART 3 JULY 1992

CAMBRIDGE UNIVERSITY PRESS



## EDITORS

**Professor John Hughes**  
Department of Computer Sciences  
Chalmers University of Technology  
S-412 96 Göteborg  
Sweden  
rjmh@cs.chalmers.se

**Professor Paul Hudak**  
Department of Computer Science  
Yale University  
New Haven  
CT 06520  
USA  
hudak@yale.edu

**Dr Philip Wadler**  
Computing Science Department  
The University  
Glasgow G12 8QQ  
UK  
wadler@dcs.glasgow.ac.uk

**Professor Henk Barendregt**  
Department of Computer Science  
Catholic University Nijmegen  
Toernooiveld 1  
6525 ED Nijmegen  
The Netherlands  
henk@cs.kun.nl

**Simon L. Peyton Jones**  
Department of Computing Science  
University of Glasgow  
Glasgow G12 8QQ  
UK  
simonpj@dcs.glasgow.ac.uk

## EDITORIAL BOARD

**Arvind**  
MIT Lab for Computer Science  
545 Technology Square  
Cambridge MA 02139  
USA

**Lennart Augustsson**  
Department of Computer Science  
Chalmers University of  
Technology  
S-412 96 Göteborg  
Sweden

**Richard S. Bird**  
Oxford University Computing  
Laboratory  
Programming Research Group  
8-11 Keble Road  
Oxford OX1 3QD.  
UK

**F. Warren Burton**  
Department of Computer Science  
Simon Fraser University  
Burnaby  
British Columbia V5A 1S6  
Canada

**Pierre-Louis Curien**  
CNRS-LIENS  
Ecole Normale Supérieure  
45 rue d'Ulm  
75230 Paris  
France

**Chris Hankin**  
Department of Computing Science  
Imperial College  
180 Queen's Gate  
London SW7 2BZ  
UK

**Robert Harper**  
School of Computer Science  
Carnegie Mellon University  
Pittsburgh PA 15213-3890  
USA

**Thomas Johnson**  
Department of Computer Science  
Chalmers University of  
Technology  
S-412 96 Göteborg  
Sweden

**Neil D. Jones**  
DIKU  
Universitetsparken 1, DK-2100  
Copenhagen Ø  
Denmark

**Richard B. Kieburtz**  
Dept. of Computer Science &  
Engineering  
Oregon Graduate Institute  
19600 NW von Neumann Drive  
Beaverton  
Oregon 97006-1999  
USA

**David MacQueen**  
AT&T Laboratories  
Rm 2C-322  
600 Mountain Avenue  
Murray Hill  
NJ 07974  
USA

**G. E. Mints**  
Dept. Philosophy  
Stanford University  
Stanford CA 94305  
USA

**John C. Mitchell**  
Department of Computer Science  
Margaret Jacks Hall  
Stanford University  
Stanford CA 94305-2140  
USA

**Rishiyur S. Nikhil**  
Digital Equipment Corporation  
Cambridge Research Laboratory  
One Kendall Square, Bldg. 700  
Cambridge MA 02139  
USA

**John T. O'Donnell**  
Department of Computing Science  
University of Glasgow  
Glasgow G12 8QQ  
UK

**Colin Runciman**  
Department of Computer Science  
University of York  
Heslington  
York YO1 5DD  
UK

**Mitchell Wand**  
College of Computer Science  
169 Cullinane Hall  
Northeastern University  
Boston, MA 02115  
USA

**John H. Williams**  
IBM Almaden Research Center  
K53/803  
650 Harry Road  
San Jose, CA 95120-6099  
USA

## SUBSCRIPTIONS

*Journal of Functional Programming* (ISSN: 0956-7968) is published quarterly in January, April, July and October. The subscription price of Volume 2, 1992, is £69 net (USA, Canada and Mexico US\$119) post free; single parts cost £19 net (USA, Canada and Mexico US\$32) plus postage. Four parts form a volume. Orders, which must be accompanied by payment, may be sent to any bookseller, subscription agent or to the publisher: Cambridge University Press, the Edinburgh Building, Shaftesbury Road, Cambridge CB2 2RU, or in the USA, Canada and Mexico to Cambridge University Press, the Journals Department, 40 West 20th Street, New York, NY 10011-4211, USA. Copies of the journal for subscribers in the USA, Canada and Mexico are sent by air to New York to arrive with minimum delay. Second class postage paid at New York, NY and at additional mailing offices. Postmaster: send address changes in USA, Canada and Mexico to *Journal of Functional Programming*, Cambridge University Press, 40 West 20th Street, New York, NY 10011-4211. Claims for missing issues should be made immediately on receipt of the subsequent issue.

© Cambridge University Press 1992