

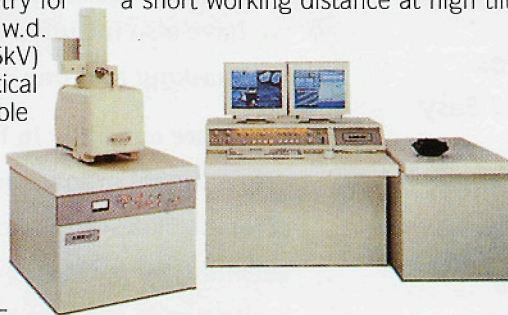
Launch Your Field Emission SEM Capabilities To The 4nm At 1kV Level.

https://doi.org/10.1017/S155192500068853 Published online by Cambridge University Press

The Amray Model 3600 LEAP

(Low Energy Advanced Performance) can propel your field emission SEM performance beyond current boundaries to a new standard of excellence. The Amray 3600 LEAP delivers:

- high resolution – 4nm at 1kV, 1.5nm at 15kV
- optimized geometry for a short working distance at high tilts with large samples (6mm w.d. at 45° tilt)
- high kV (25kV) for uncompromised analytical capabilities
- highly reliable patented Schottky field emission gun
- 2048 x 2048 frame buffer for advanced digital imaging
- two 17" high resolution, 1000 line viewing monitors
- 5 axes motorized eucentric stage
- motorized 8" linear load lock for rapid sample exchange
- embedded computer control for all SEM functions



The Amray 3600 LEAP provides resolution that's out of this world – call 1-800-225-1462 for complete information on the Model 3600 LEAP and other Amray systems.

AMRAY

160 Middlesex Tpke., Bedford, MA 01730 Tel: 617-275-1400 Fax: 617-275-0740

Circle Reader Inquiry #12

You Can Afford This!

PC SEM

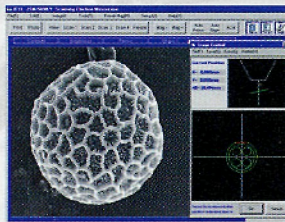
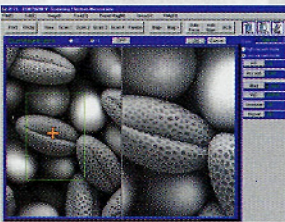
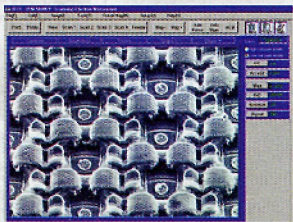


That's right, you can get the quality of a JEOL SEM now for under \$80,000!

If leasing this means around \$1,500 per month.

JSM-5600 & JSM-5600LV

Multi-Purpose and Low Vacuum Scanning Electron Microscope



All screens are clear and simple allowing easy system management and image optimization.

- ▶ **Based on a Simple PC Interface.**
- ▶ **Intuitive Operation with a Mouse Alone.**
- ▶ **No Nonsense Transition Between Conventional and Low Vacuum Modes.**
- ▶ **Built-in DTP System Allows Quick and Easy Report Generation and Printing.**
- ▶ **A Special High Sensitivity Detector Allows High Image Quality In All Modes.**

The new JSM-5600 and JSM-5600LV Scanning Electron Microscope was designed from the ground up as a PC SEM. This means that it can be controlled completely and efficiently from only the keyboard

and mouse. Keeping in mind the wide variety of preferences for controlling various aspects of an SEM we have also included an optional knobset for multitasking and fine control. You choose.

If you are currently in the market for a high end conventional or low vacuum SEM and need to combine state-of-the-art electronics with the versatility of computer control, we would like to invite you to come to our Applications Facility so that we can prove to you that it really is "As Easy As It Looks".

JEOL USA, Inc., 11 Dearborn Road, Peabody, MA 01960
Tel: 978/535-5900 • Fax: 978/536-2205
Email: eod@jeol.com • WEB: <http://www.jeol.com>

