

JOURNAL OF MENTAL SCIENCE.

Asylum Reports have been received for 1917-18 from those marked with an asterisk

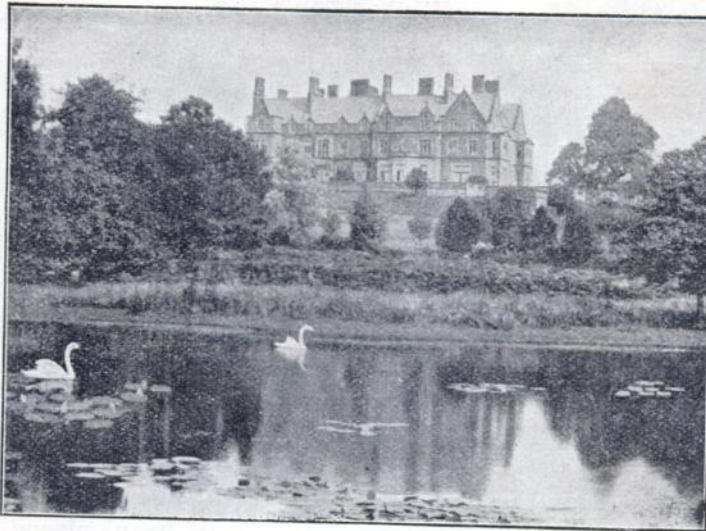
<i>English and Welsh County.</i>	Norfolk. Northampton. Northumberland. Nottingham. Oxford. Salop.* Somerset : Taunton. Wells. Stafford : Burntwood. Cheddleton. Stafford. Suffolk. Surrey : Brookwood. Netherne. Sussex : Chichester. East. Warwick. Wilts (Kesteven).*	Leicester. Middlesborough.* Newcastle. Norwich. Nottingham. Plymouth. Portsmouth. Sunderland. West Ham. <i>Hospitals.</i> Albert. Barnwood. Bethlem. Bootham. Broadmoor. City of London. Coton Hill. Earlswood. Lincoln. Manchester. <i>Metropolitan Asylums Board.</i> * St. Andrew's. St. Ann's Coppice. St. Luke's. Rampton. Royal Eastern Counties Institution for Idiots (Colchester).* The Retreat (York). Warneford. Wonford. <i>Scotland.</i> Aberdeen (Kingseat). Argyll and Bute. Ayr.* Baldovan. Barony. Dumfries. Dundee.	Edinburgh.* Fife and Kinross.* Glasgow : District. Royal. Woodilee. Govan. Inverness.* Kirklands. Lanark. Midlothian. Montrose. Murthly. Perth. Roxburgh (District).* Stirling. <i>Ireland.</i> Armagh. Ballinasloe.* Belfast. Carlow. Castlebar. Clonmel. Cork. Downpatrick.* Ennis. Enniscorthy.* Farnham. Kilkenny. Killarney. Letterkenny. Limerick. Londonderry. Maryborough. Monaghan. Mullingar. Omagh. Palmerston. Richmond. St. Patrick's. Sligo. Waterford.
Beds. Berks. Bucks.* Cambridge. Carmarthen.* Chester. Chester (Parkside). Chichester. Cornwall. Cumberland and Westmorland. Denbigh. Derby. Devon. Dorset. Durham. Essex : Brentwood. Colchester. Glamorgan.* Gloucester. Hants.* Isle of Man. Isle of Wight. Hereford. Hertford.* Kent.* Lancashire : Lancaster. Rainhill. Prestwich. Whittingham. Winwick. Leicester. Lincoln : Bracebridge. Kesteven. The Lawn. London City. London County. Middlesex. Monmouth.*	Worcester : Barnsley Hall. Powick. Yorkshire : Beverley. Clifton. Menstone. Storches Hall. Wadsley. Wakefield.* <i>Borough.</i> Birmingham : Rubery Hill. Winson Green. Bristol. Canterbury. Cardiff. Derby. Exeter. Haywards Heath. Hull. Ipswich.		

The following Asylum Reports have also come to hand :

Agra and Oudh. Albany. Alt Scherbitz. Annual Report of the Massachusetts School for the Feebleminded at Waltham. Assam. Bengal. Binghampton. Bombay. Buffalo. Butler. Cape of Good Hope. Carolina N. Carthage. Central Provinces. Cleveland. Connecticut. Dakota N. Danville. Egypt.	Grahamstown. Harrisburgs. Hudson River. Illinois West. Indiana East. Iowa. Jamaica. Kalanazoo State Hosp., Michigan. Lebanon. Long Island. Long View. Lower Austria. Madras. Manhattan. Massachusetts Bd. Massachusetts Hospital. Maryland. Matteawan. Michigan East. Mississippi. Missouri.	Montreal. New Brunswick. New Hampshire. New South Wales. New York. Northampton. North-Western Provinces. Nova Scotia. Pennsylvania. Ohio. Ontario. Pennsylvania. Pennsylvania Hospital. Pennsylvania, Norristown, Aarhus. Pennsylvania West. Philadelphia Friends. Pretoria.	Punjab. Protestant Hospital for the Insane. Rangoon. Rochester. Sheppard and Pratt Hospital, Baltimore. South Australia. South Mountain. Straits Settlements. Tarrytown. Taunton. Tezpur. Utica. Verdun. Victoria. Virginia Central. Virginia West. Warren. Willard. Washington.
--	--	--	--

BOREATTON PARK.

Founded by the late W. H. O. SANKEY, M.D., F.R.C.P., for the reception of a limited number of ladies and gentlemen mentally afflicted, and now conducted on the same lines by his son, E. H. O. SANKEY, M.A., M.B., B.C.Cantab.



The house, a first-class country Mansion, specially adapted for its purpose, stands about 400 ft. above the sea and commands magnificent views of Welsh mountain scenery.

The Gardens slope to the West, and lead to the Deer Park, one of the oldest in the kingdom.

There is fishing both for trout and coarse fish in the pools in the Deer Park, and the right of fishing in about 5 miles of the River Perry is leased.

There are Hot Houses and Orchard House.

Private Golf Course of 18 holes, Tennis Courts, and Croquet Lawns.

So far as possible the patients of both sexes take their meals and associate at all times with the family of the Superintendent, the object being to make the house as much as possible like an ordinary country house.

Arrangements can be made for friends of the Patients to reside in the house should they desire to do so.

There is good stable accommodation, and Horses, Carriages and Motor are provided.

For further particulars apply.—

Dr. SANKEY, Boreatton Park, Baschurch, Salop.

Advances in Treatment

MAL-NUTRITION

'BYNOL'
A homogeneous mixture of the 'Allenburys' Extract of Malt with the 'Allenburys' Norwegian Cod-Liver Oil.



'BYNOL'
The word 'Bynol' indicates the 'Allenburys' manufacture and ensures the finest and purest quality.

Identification **“BYNOL”** Trade Mark

Extract of Malt and Cod-Liver Oil.

The treatment of mal-nutrition has been placed upon a more scientific basis by the advances in knowledge made in recent years. These support the use of “Bynol” Malt and Cod-Liver Oil for the following reasons:—

<p>The “Allenburys” Extract of Malt contains a high proportion of albuminoids and malt sugar, tissue forming and heat producing food-stuffs of the greatest value for children and adults.</p>	<p>The “Allenburys” Norwegian Cod-Liver Oil consists largely of unsaturated fats metabolised by the liver for immediate absorption and utilisation; these readily take the place of butter fat.</p>
--	---

The “Allenburys” Cod-Liver Oil contains growth-promoting vitamins.

In bottles at 2/3 and 4/- each.

ALLEN & HANBURYS Ltd., LONDON.

37 Lombard St., E.C.3. 7 Vere Street, W.1.



TRADE MARK
A.D. 1715

BORDERLAND PATIENTS.

SOUTH BEACON

**Hadlow Down,
Nr. Uckfield, Sussex.**

ESTABLISHED 1892.

Telegrams: "Hadlow Down."

Station: Buxted (L.B. & S.C.R.)

□
**Outdoor
Occupation
a Speciality.**
□



□
**The usual
Recreations
of a Country
House.**
□

**For the reception of 15 gentlemen requiring
rest and quietness, but who are not
ill enough for certificates.**

Terms from 5 Guineas per week.

Full particulars from :: :: PHILIP H. HARMER.

EPILEPSY

Is so uniformly and so remarkably benefited by the use of

GELINEAU'S DRAGEES

(Pot.-Brom.; Antim.-Arsen.; Picrotoxine)

that no case should be considered hopeless until these Dragees have been thoroughly tried. RELIEF—AND A GREAT DEAL MORE—are usually obtained even when routine treatment fails completely.

GELINEAU'S DRAGEES

are successfully prescribed by leading Physicians, and are used in Hospitals and Epileptic Colonies. *Their use is also indicated in the nervous and painful crises of Menstruation and in the varying manifestations of Shell Shock.*

In tins of 50 and 150. Full particulars from the general Agents for the United Kingdom :

WILCOX, JOZEAU & Co., 49, Haymarket, London, S.W. 1.

A. K. CO.

ALWAYS USE

REFLEX

FLOOR POLISH.

REQUIRES NO MIXING WHATEVER.

Brilliantly Polishes Floors, Linoleums, Floorcloths, &c.

Economical, Cleanly, Healthful; Maximum of Lustre for Minimum of Labour.

GEO. T. COX & SONS, Ltd.,

31, KING WILLIAM STREET, LONDON BRIDGE, E.C.

This Polish is specially adapted for use in Public Institutions and other large establishments. Samples Free on application.

JOURNAL OF MENTAL SCIENCE.

CONTENTS FOR APRIL, 1919.

	Pages
Original Articles.—	
War Psychology: English and German; by the late Dr. Henry Maudsley.	
—The Factors of Criminal Actions; by Sir H. Bryan Donkin, M.D., F.R.C.P.	
—Artes et Medicina; by Alan F. Grimby, M.A., M.D., L.M.(Rot. Dub.).—	
Psychoses in the Expeditionary Forces; by O. P. Napier Pearn, M.R.C.S., L.R.C.P., Temp. Capt. R.A.M.C.	65—108
Clinical Notes and Cases.—	
A Short Note on the Use of Calcium in Excited States; by T. C. Graves, B.Sc., M.B., B.S.Lond., F.R.C.S.Eng., L.R.C.P.Lond., Temp. Capt. R.A.M.C.	109
Reviews.—	
Diseases of the Nervous System: A Text-Book of Neurology and Psychiatry; by Drs. Smith E. Jelliffe and W. A. White.—Mysticism and Logic; by Bertrand Russell, M.A., F.R.S.—Essays in Scientific Synthesis; by Eugenio Rignano	109—116
Epitome of Current Literature.—	
1. Psychology.—2. Clinical Neurology and Psychiatry	117—122
Notes and News.—	
The Medico-Psychological Association of Great Britain and Ireland: Quarterly Meeting.—Société Médico-Psychologique.—Irish Division.— Report for the Year 1917 from the Lunacy Division, Egypt, being the Twenty-third Annual Report on the Government Asylum at Abbasiya, and the Sixth Annual Report on the Asylum at Khanka.—Correspondence. Retirement of Dr. Soutar.—Obituary.—Notices by Registrar.—The Library of the Medico-Psychological Association.—Appointments.—Notice to Contributors	122—140

ADLARD AND SON AND WEST NEWMAN, LTD., IMPR., LONDON AND DORKING.