

# Radiocarbon

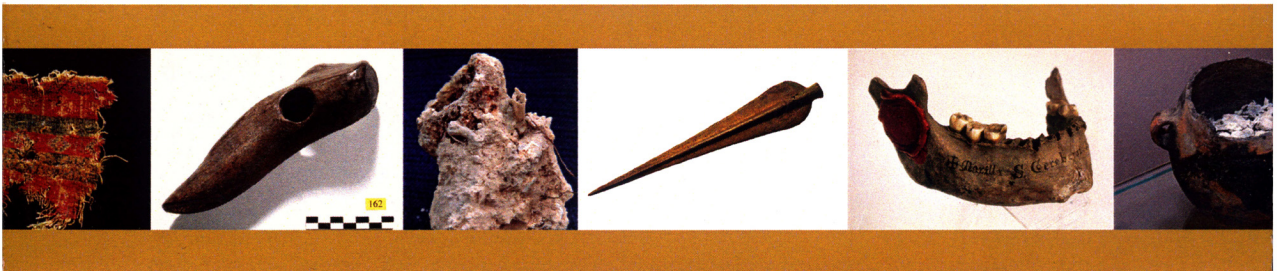
An International Journal of Cosmogenic Isotope Research

VOLUME 56 / NUMBER 2 / 2014

## 14<sup>C</sup> ARCHAEOLOGY

7th International Symposium 8-12 April 2013, Ghent, Belgium

Guest Editors Mark Van Strydonck, Philippe Crombé, and Guy De Mulder



fwo  
Opening  
new  
horizons



# **RADIOCARBON**

An International Journal of Cosmogenic Isotope Research

*Editor:* A J T JULI

*Associate Editors:* J WARREN BECK, GEORGE S BURR, AND GREGORY W L HODGINS

*Managing Editor:* MARK E MCCLURE

*Copy-Editing Assistance:* KIMBERLEY TANNER ELLIOTT

Published by  
Department of Geosciences  
The University of Arizona

Published four times a year at The University of Arizona, Tucson, AZ 85712-1201, USA.

© 2014 by the Arizona Board of Regents on behalf of the University of Arizona. All rights reserved.

*Subscription rate* (2014): \$315.00 (institutions), \$140.00 (individuals). Foreign postage is extra. A complete price list, including proceedings of international conferences, special publications and back issues, appears in the back pages of this issue. *Advertising rates* available upon request, or see [www.radiocarbon.org/adrates.html](http://www.radiocarbon.org/adrates.html).

*Missing issues* will be replaced without charge only if claim is made within three months (six months for India, New Zealand, and Australia) after the publication date. Claims for missing issues will not be honored if non-delivery results from failure by the subscriber to notify the Journal of an address change.

*Authors:* See our "Information for Authors" document at [www.radiocarbon.org/Authors/](http://www.radiocarbon.org/Authors/) for guidelines on manuscript submission and format. All correspondence and manuscripts should be addressed to the Managing Editor, *RADIOCARBON*, Department of Geosciences, The University of Arizona, 4717 East Fort Lowell Road, Tucson, AZ 85712-1201 USA. Tel.: +1 520 881-0857; Fax: +1 520 881-0554; Email: [editor@radiocarbon.org](mailto:editor@radiocarbon.org).

*List of laboratories.* Our comprehensive list of laboratories is published annually, and is also available at [www.radiocarbon.org/Info/lablist.html](http://www.radiocarbon.org/Info/lablist.html). We ask all laboratory directors to provide their laboratory code designation, as well as current telephone and fax numbers, and email addresses. Changes in names or addresses, additions or deletions should be reported to the managing editor. Conventional and AMS laboratories are arranged in alphabetical order by country, and we include laboratories listed by code designation.

*RADIOCARBON* on the World Wide Web: <http://www.radiocarbon.org/>

Cover design: copyright ©2014 Edge of the Map, Inc., [www.EdgeOfTheMapInc.com](http://www.EdgeOfTheMapInc.com). Images courtesy of conference organizers, Ugent and KIK-IRPA.

*RADIOCARBON* is indexed and/or abstracted by the following sources: *Anthropological Index*; *Anthropological Literature*; *Art and Archaeology Technical Abstracts*; *Bibliography and Index of Geology* (GeoRef); *British Archaeological Bibliography*; *Chemical Abstracts*; *Chemistry Citation Index*; *Current Advances in Ecological and Environmental Sciences*; *Current Contents* (ISI); FRANCIS (Institut de l'Information Scientifique et Technique – CNRS); *Geographical Abstracts*; *Geological Abstracts*; *Oceanographic Literature Review*; *Science Citation Index*; *Social Sciences Citation Index*.

# Proceedings of the 7th Radiocarbon and Archaeology International Symposium

Radiocarbon, Vol 56, Nr 2, 2014

## CONTENTS

### PREFACE

*Mark Van Strydonck and Philippe Crombé*..... v

### EDITORIAL

*A J T Jull and A P McNichol*..... ix

### BOOK REVIEW

The Siberian Late Pleistocene Mammal Fossils in Numerical Perspective: Review of Christy G. Turner II, Nicolai D. Ovodov and Olga V. Pavlova. *Animal Teeth and Human Tools: A Taphonomic Odyssey in Ice Age Siberia*  
*Yaroslav V Kuzmin*..... xi

### BALEARIC ISLANDS: NEW DATA FOR AN OLD STORY

Matching Data: Analyzing the Chronological Use Sequence in the Iron Age Necropolis of the Staggered Turriform of Son Ferrer (Balearic Islands, Spain)  
*Manuel Calvo Trias, Jaume García Rosselló, David Javaloyas Molina, Daniel Albero Santacreu, Mark Van Strydonck*..... 361

Chronology of the S'Hospitalet Vell Naveta Village: An Example of Bronze Age Settlement in the Balearic Islands  
*Damià Ramis, Magdalena Salas*..... 375

<sup>14</sup>C Dating and Material Analysis of the Lime Burial of Cova de Na Dent (Mallorca, Spain)  
*Guy De Mulder, Roald Hayen, Mathieu Boudin, Tess van den Brande, Louise Decq, Magdalena Salas Burguera, Damià Ramis, Herlinde Borms, Mark Van Strydonck*..... 387

Radiocarbon Dating of the Necropolis of the Early Christian Site of Son Peretó (Mallorca, Balearic Islands)  
*Miguel Á Cau, Mateu Riera Rullan, Magdalena Salas, Mark Van Strydonck*..... 399

Chronological Framework for the Early Talayotic Period in Menorca: The Settlement of Cornia Nou  
*Montserrat Anglada, Antoni Ferrer, Lluís Plantalamor, Damià Ramis, Mark Van Strydonck, Guy De Mulder*..... 411

New Data from Fortified Coastal Settlement of Cap de Forma, Mahon, Menorca (Balearic Islands)  
*Anna Depalmas*..... 425

Absolute Chronology for the Beaker Culture Site of Coval Simó (Mallorca, Balearic Islands)  
*Jaume Coll, Damià Ramis*..... 439

### CHRONOLOGY

Puzzling Radiocarbon Dates for the Upper Paleolithic Site of Sungir (Central Russian Plain)  
*Yaroslav V Kuzmin, Johannes van der Plicht, Leopold D Sulerzhitsky*..... 451

Challenging the Traditional Chronological Framework of Funerary Rituals in the Meuse-Demer-Scheldt Region: <sup>14</sup> C Results from the Site of Lummen-Meldert (Belgium) <i>Guy De Mulder, Guido Creemers, Mark Van Strydonck</i> .....	461
A New Perception of the Late Bronze Age Chronology in Belgium <i>Walter Leclercq</i> .....	469
The Northwest Belgian Bronze Age Barrow in Context: A Review of the <sup>14</sup> C Chronology from the Late Neolithic to Bronze Age <i>Jeroen De Reu</i> .....	479
Chronological Model of a Brazilian Holocene Shellmound (Sambaqui da Tarioba, Rio de Janeiro, Brazil) <i>K D Macario, R C C L Souza, D C Trindade, J Decco, T A Lima, O A Aguilera, A N Marques, E Q Alves, F M Oliveira, I S Chanca, C Carvalho, R M Anjos, F C Pamplona, E P Silva</i> .....	489
Radiocarbon Chronology of the Tlatoani Site at Tlayacapan, Morelos, Mexico <i>Alexander Cherkinsky, Raúl Francisco González Quezada</i> .....	501
Radiocarbon Dating of the Neolithic Lakeside Settlement of Dispilio, Kastoria, Northern Greece <i>Yorgos Facorellis, Marina Sofronidou, Giorgos Hourmouziadis</i> .....	511
Radiocarbon Evidence for the Early Bronze Age Levant: The Site of Tell Fadous-Kfarabida (Lebanon) and the End of the Early Bronze III Period <i>Felix Höflmayer, Michael W Dee, Hermann Genz, Simone Riehl</i> .....	529
Tell Sabi Abyad, Syria: Dating of Neolithic Cemeteries <i>H Plug, J van der Plicht, P M M G Akkermans</i> .....	543

## METHODOLOGY: GENERAL AND BONES

Conventions for Reporting Radiocarbon Determinations <i>Andrew R Millard</i> .....	555
<sup>14</sup> C Analysis and Sample Preparation at the New Bern Laboratory for the Analysis of Radiocarbon with AMS (LARA) <i>Sönke Szidat, Gary A Salazar, Edith Vogel, Michael Battaglia, Lukas Wacker, Hans-Arno Synal, Andreas Türler</i> .....	561
A New Database Program Installed at the SUERC Radiocarbon Laboratory <i>Brian G Tripney, Philip Naysmith, Gordon T Cook</i> .....	567
Radiocarbon Dating to a Single Year by Means of Rapid Atmospheric <sup>14</sup> C Changes <i>L Wacker, D Güttler, J Goll, J P Hurni, H-A Synal, N Walti</i> .....	573
Dating Late Paleolithic Harpoons from Lake Lubāns, Latvia <i>John Meadows, Berit V Eriksen, Ilga Zagorska, Alexander Dreves, Joanna Simpson</i> .....	581
Carbon Exchanges between Bone Apatite and Fuels during Cremation: Impact on Radiocarbon Dates <i>C Snoeck, F Brock, R J Schulting</i> .....	591
An Archaeological Mystery Revealed by Radiocarbon Dating of Cross-Flow Nanofiltrated Amino Acids Derived from Bone Collagen, Silk, and Hair: Case Study of the Bishops Baldwin I and Radbot II from Noyon-Tournai <i>Mathieu Boudin, Pascal Boeckx, Peter Vandenaabeele, Mark Van Strydonck</i> .....	603

19 Years of Mortar Dating: Learning from Experience <i>Åsa Ringbom, Alf Lindroos, Jan Heinemeier, Pia Sonck-Koota</i> .....	619
Textiles and Radiocarbon Dating <i>Irka Hajdas, Carlo Cristi, Georges Bonani, Mantana Maurer</i> .....	637
<b>METHODOLOGY: TREE RINGS AND PLANTS</b>	
Wiggle-Match Dating of Tree-Ring Sequences from the Early Iron Age Defensive Settlement Motroninskoe Gorodishche in Mielniki (Central Ukraine) <i>Jan Chochorowski, Marek Krapiec, Sergej Skoryj, Vadim Skrypkin</i> .....	645
Este, Padova, Italy: Dating the Iron Age Waterfront <i>John Meadows, Nicoletta Martinelli, Marie-Josée Nadeau, Elodia Bianchin Citton</i> .....	655
The 1st Millennium AD Mediterranean Shipbuilding Transition at Dor/Tantura Lagoon, Israel: Dating the Dor 2001/1 Shipwreck <i>Brita Lorentzen, Sturt W Manning, Yaacov Kahanov</i> .....	667
Dating Historical Contexts: Issues, Plant Material, and Methods to Date the Late Roman Site of Faragola, Apulia (SE Italy) <i>V Caracuta, G Fiorentino, M Turchiano, G Volpe</i> .....	679
<sup>14</sup> C Dating of Historical Buildings in Japan <i>Nanae Nakao, Minoru Sakamoto, Mineo Imamura</i> .....	691
Vegetation Changes Viewed from Pollen Analysis in Rarotonga, Southern Cook Islands, Eastern Polynesia <i>Toshiyuki Fujiki, Mitsuru Okuno, Hiroshi Moriwaki, Toshio Nakamura, Kei Kawai, Gerald McCormack, George Cowan, Paul T Maoate</i> .....	699
Wood Pretreatment Protocols and Measurement of Tree-Ring Standards at the Oxford Radiocarbon Accelerator Unit (ORAU) <i>Richard A Staff, Linda Reynard, Fiona Brock, Christopher Bronk Ramsey</i> .....	709
<b>EURASIAN ARCHAEOLOGY</b>	
The Neolithization of Siberia and the Russian Far East: Major Spatiotemporal Trends (the 2013 State-of-the-Art) <i>Yaroslav V Kuzmin</i> .....	717
Modeling Spatial Innovation Diffusion from Radiocarbon Dates and Regression Residuals: The Case of Early Old World Pottery <i>Fabio Silva, James Steele, Kevin Gibbs, Peter Jordan</i> .....	723
Another Way of Early Pottery Distribution in Eastern Europe? Case Study of the Pezmog 4 Site, European Far Northeast <i>Victor N Karmanov, Natalia E Zaretskaya, Alexander V Volokitin</i> .....	733
Shepsi, the Oldest Dolmen with Port-Hole Slab in the Western Caucasus <i>V A Trifonov, G I Zaitseva, J van der Plicht, A A Kraineva, A A Sementsov, A Kazarnitsky, N D Burova, S A Rishko</i> .....	743
Direct Radiocarbon Dating of Late Pleistocene Hominids in Eurasia: Current Status, Problems, and Perspectives <i>Yaroslav V Kuzmin, Susan G Keates</i> .....	753

## RESERVOIR EFFECTS

- Reservoir Effect of Archaeological Samples from Steppe Bronze Age Cultures in Southern Russia  
*N Shishlina, V Sevastyanov, E Zazovskaya, J van der Plicht*..... 767
- Dating Human Remains from the Historical Period in Belgium: Diet Changes and the Impact of Marine and Freshwater Reservoir Effects  
*Anton Erynck, Mathieu Boudin, Tess van den Brande, Mark Van Strydonck*..... 779
- Analyzing Radiocarbon Reservoir Offsets through Stable Nitrogen Isotopes and Bayesian Modeling: A Case Study Using Paired Human and Faunal Remains from the Cis-Baikal Region, Siberia  
*Christopher Bronk Ramsey, Rick Schulting, Olga I Goriunova, Vladimir I Bazaliiskii, Andrzej W Weber*..... 789
- Variation in Radiocarbon Age Determinations from the Crystal River Archaeological Site, Florida  
*Alexander Cherkinsky, Thomas J Pluckhahn, Victor D Thompson*..... 801
- Utilization of  $\delta^{13}\text{C}$ ,  $\delta^{15}\text{N}$ , and  $\delta^{34}\text{S}$  Analyses to Understand  $^{14}\text{C}$  Dating Anomalies within a Late Viking Age Community in Northeast Iceland  
*Kerry L Sayle, Gordon T Cook, Philippa L Ascough, Hildur Gestsdóttir, W Derek Hamilton, Thomas H McGovern*..... 811
- Potential Freshwater Reservoir Effects in a Neolithic Shell Midden at Riņņukalns, Latvia  
*John Meadows, Harald Lübke, Ilga Zagorska, Valdis Bērziņš, Aija Ceriņa, Ilze Ozola*..... 823

## STATISTICS AND MODELING

- Second Radiocarbon Intercomparison Program for the Chauvet-Pont d'Arc Cave, Ardèche, France  
*A Quiles, H Valladas, J-M Geneste, J Clottes, D Baffier, B Berthier, F Brock, C Bronk Ramsey, E Delqué-Količ, J-P Dumoulin, I Hajdas, K Hippe, G W L Hodgins, A Hogg, A J T Jull, E Kaltnecker, M de Martino, C Oberlin, F Petchey, P Steier, H-A Synal, J van der Plicht, E M Wild, A Zazzo*..... 833
- EUBAR: A Database of  $^{14}\text{C}$  Measurements for the European Bronze Age. A Bayesian Analysis of  $^{14}\text{C}$ -Dated Archaeological Contexts from Northern Italy and Southern France  
*Giacomo Capuzzo, Elisabetta Boaretto, Juan A Barceló*..... 851
- Simulations and Outputs  
*Seren Griffiths*..... 871
- Radiocarbon Distance between Calendar Dates  
*Adam Walanus, Dorota Nalepka*..... 877
- Chronology of Wetland Hydrological Dynamics and the Mesolithic-Neolithic Transition along the Lower Scheldt: A Bayesian Approach  
*Jeroen Verhegge, Tine Missiaen, Mark Van Strydonck, Philippe Crombé*..... 883
- Synchronizing a Late Glacial Abrupt Cooling Event with Paleoenvironmental and Population Changes: Case Study of the Moervaart Paleolake Area (NW Belgium)  
*Philippe Crombé, Erick Robinson, Mark Van Strydonck*..... 899