

NTQ

NEW
THEATRE
QUARTERLY

20



NUDITY ON
THE VICTORIAN STAGE

IS THERE A FUTURE
FOR THE AMERICAN ACTOR?

EUGENIO BARBA ON
RITUAL AND THE ACTOR

FEMALE PERFORMERS
IN THE CAFÉ-CONCERT

STANISLAVSKY IN POLAND

THE POLITICS OF
COMMUNITY THEATRE

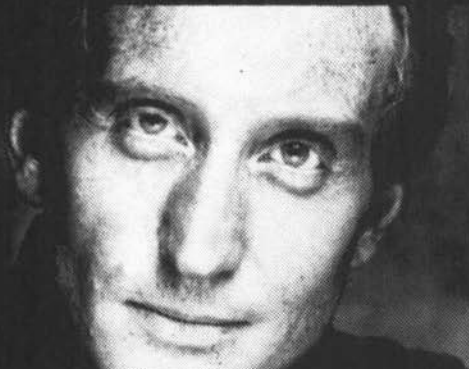
INGMAR BERGMAN DIRECTS
EUGENE O'NEILL

PASOLINI CHECKLIST
AND ANALYSIS

CAMBRIDGE UNIVERSITY PRESS

ROYAL SHAKESPEARE COMPANY STRATFORD-UPON-AVON SEASON

*4 new Shakespeare productions,
a Jacobean revival and a world premiere*



CHARLES DANCE CORIOLANUS



HARRIET WALTER THE DUCHESS OF MALFI



ANTONY SHER SINGER

Royal Shakespeare Theatre

AS YOU LIKE IT

BY WILLIAM SHAKESPEARE • FROM 7 SEPTEMBER

ALL'S WELL THAT ENDS WELL

BY WILLIAM SHAKESPEARE • FROM 28 SEPTEMBER

CORIOLANUS

BY WILLIAM SHAKESPEARE • FROM 30 NOVEMBER

Swan Theatre

PERICLES

BY WILLIAM SHAKESPEARE • FROM 6 SEPTEMBER

SINGER WORLD PREMIERE

BY PETER FLANNERY • FROM 27 SEPTEMBER

THE DUCHESS OF MALFI

BY JOHN WEBSTER • FROM 29 NOVEMBER



Book now - 0789 295623

LINES OPEN MON-SAT 9am-8pm

FOR LEAFLET PHONE 0789 205301 (OFFICE HOURS ONLY)





VOLUME V NUMBER 20 NOVEMBER 1989
Successor journal to *Theatre Quarterly* (1971–1981)

Editors
CLIVE BARKER
SIMON TRUSSLER

Advisory Editors: Arthur Ballet, Eugenio Barba, Martin Esslin, Daniel Gerould, John Harrop, Peter Hepple, Ian Herbert, Ross Kidd, Jan Kott, Brian Murphy, Laurence Senelick, Theodore Shank, Sarah Stanton, Claudio Vicentini, John Willett

Book Reviews Editor: Anthony Jackson

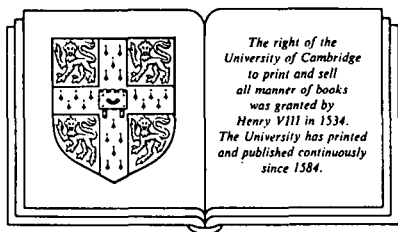
Editorial Assistant: Elaine Turner

Editorial Working Group: Susan Bassnett, Tony Howard, Piotr Kuhniewicz, Marco de Marinis

Contents

- EUGENIO BARBA **311** The Fiction of Duality
the actor's work as 'ritual in search of a meaning'
- GLENN LONEY **315** The American Actor Prepares: Scene-Study for Oblivion
is there a future for the American actor in training?
- TRACY C. DAVIS **321** The Spectacle of Absent Costume: Nudity on the Victorian Stage
a feminist critique of stage 'nakedness' in the nineteenth century
- GERALDINE HARRIS **334** But Is It Art? Female Performers in the Café-Concert
the perception and the reality of a unique style of performance
- RICHARD SCHECHNER **348** Theory and Practice of the Indeterminate Theatre
interview with the American director, scholar, and theatrical theorist
- JULIUSZ TYSZKA **361** Stanislavsky in Poland: Ethics and Politics of the Method
the inverse relationship between political and theatrical dominance
- GRAHAM WOODRUFF **370** Community, Class, and Control: a View of Community Plays
extending ambitions from the parochial to the political
- EGIL TÖRNQVIST **374** Ingmar Bergman Directs 'Long Day's Journey into Night'
the Stockholm production of O'Neill's masterpiece
- RUSSELL WILLIAMS **384** NTQ Checklist No. 5: Pier Paolo Pasolini
biography, playography, bibliography
- PAOLO PUPPA **392** Dialectics and Dionysus: on Pasolini's 'Affabulazione'
the best-known work by the Italian director, poet, and playwright
- 398** NTQ Book Reviews
edited by Anthony Jackson
- OBITUARY **404** Zygmunt Hübner: Professional, Teacher, Diplomat

New Theatre Quarterly is published in February, May, August and November by Cambridge University Press, The Edinburgh Building, Shaftesbury Road, Cambridge CB2 2RU, England ISBN: 0 521 388260 ISSN: 0266—464X



CAMBRIDGE UNIVERSITY PRESS

The Pitt Building, Trumpington Street, Cambridge CB2 1RP
40 West 20th Street, New York, NY 10011, USA
10 Stamford Road, Oakleigh, Melbourne 3166, Australia

Editorial Enquiries: Great Robhurst, Woodchurch, Ashford, Kent TN26 3TB, England

Unsolicited manuscripts are considered for publication in New Theatre Quarterly. They should be sent to Simon Trussler at the above address, but unless accompanied by a stamped addressed envelope (UK stamp or international reply coupons) return cannot be guaranteed. Contributors are asked to follow the journal's house style as closely as possible.

Advertising: Enquiries should be sent to the Journals Promotion Department of Cambridge or the American Branch of Cambridge University Press

Subscriptions: *New Theatre Quarterly* (ISSN: 0266-464X) is published quarterly by Cambridge University Press, The Edinburgh Building, Shaftesbury Road, Cambridge CB2 2RU and 40 West 20th Street, New York, NY 10011.

Single parts cost £6.00 (US\$14.00 in the USA and Canada) plus postage. Four parts form a volume. The subscription price (which includes postage) of Volume V, 1989, is £27.00 UK, £29.00 elsewhere (US\$54.00 in USA and Canada) for institutions, £15.00 (US\$27.00) for individuals ordering direct from the publishers and certifying that the *Journal* is for their personal use.

Orders, which must be accompanied by payment, may be sent to a bookseller or to the publishers (in the USA and Canada to the American Branch).

Copies of the *Journal* for subscribers in the USA and Canada are sent by air to New York to arrive with minimum delay. Second class postage paid at New York, NY and at additional mailing offices. POSTMASTER: send address changes in the USA and Canada to *New Theatre Quarterly*, Cambridge University Press, 40 West 20th Street, New York, NY 10011.

Claims for missing issues will only be considered if made immediately on receipt of the subsequent issue.

© 1989 CAMBRIDGE UNIVERSITY PRESS

Copying: This journal is registered with the Copyright Clearance Center, 27 Congress St., Salem, Mass. 01970. Organizations in the USA who are registered with C.C.C. may therefore copy material (beyond the limits permitted by sections 107 and 108 of US copyright law) subject to payment to C.C.C. of the per-copy fee of \$05.00. This consent does not extend to multiple copying for promotional or commercial purposes. Code 0266-464X/89 \$5.00 + .00.

ISI Tear Sheet Service, 3501 Market Street, Philadelphia, Pennsylvania 19104, USA is authorized to supply single copies of separate articles for private use only.

For all other use, permission should be sought from the Cambridge University Press.

Printed and bound in Great Britain by the University Press, Cambridge.