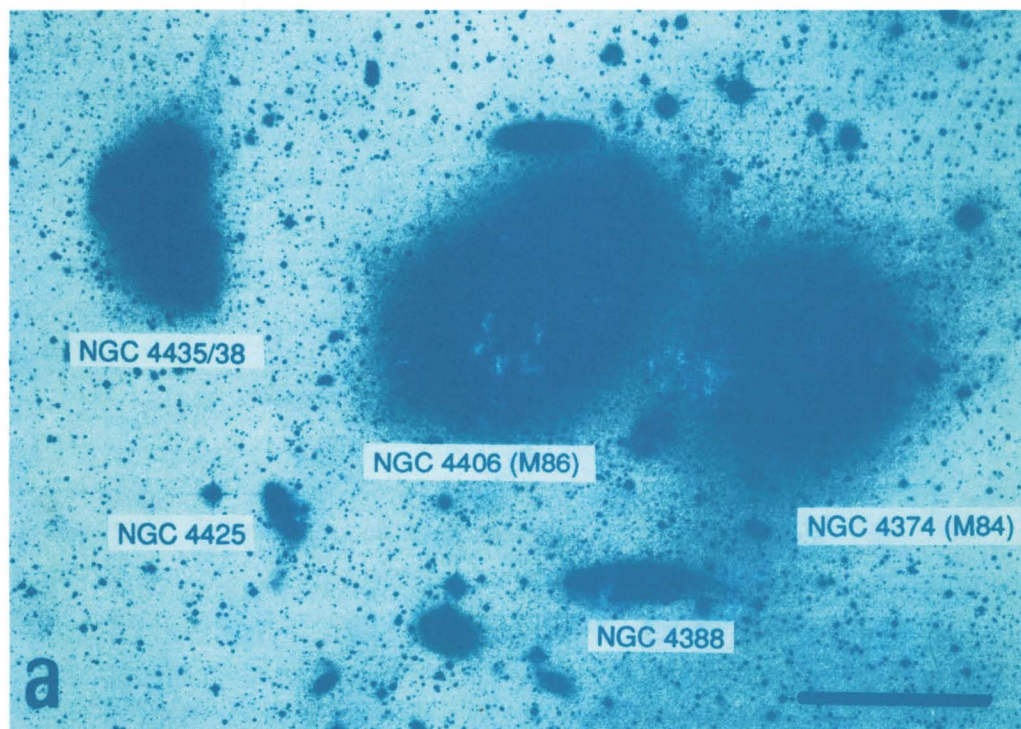


INTERNATIONAL ASTRONOMICAL UNION

SYMPOSIUM No. 161

ASTRONOMY FROM WIDE-FIELD IMAGING

Edited by H. T. MacGILLIVRAY, E. B. THOMSON, B. M. LASKER,
I. N. REID, D. F. MALIN, R. M. WEST and H. LORENZ



INTERNATIONAL ASTRONOMICAL UNION

KLUWER ACADEMIC PUBLISHERS

ASTRONOMY FROM WIDE-FIELD IMAGING

INTERNATIONAL ASTRONOMICAL UNION
UNION ASTRONOMIQUE INTERNATIONALE

ASTRONOMY FROM WIDE-FIELD IMAGING

PROCEEDINGS OF THE 161ST SYMPOSIUM OF THE
INTERNATIONAL ASTRONOMICAL UNION,
HELD IN POTSDAM, GERMANY, AUGUST 23-27, 1993

EDITED BY

H. T. MacGILLIVRAY, E. B. THOMSON
Royal Observatory Edinburgh, Scotland

B. M. LASKER
Space Telescope Science Institute, Baltimore, MD, U.S.A.

I. N. REID
Palomar Observatory, Pasadena, CA, U.S.A.

D. F. MALIN
Anglo-Australian Observatory, Epping, Australia

R. M. WEST
European Southern Observatory, Garching, Germany

and

H. LORENZ
Astrophysikalisches Institut Potsdam, Potsdam, Germany



KLUWER ACADEMIC PUBLISHERS
DORDRECHT / BOSTON / LONDON



Library of Congress Cataloging-in-Publication Data

International Astronomical Union. Symposium (161st : 1993 : Potsdam, Germany)

Astronomy from wide-field imaging: proceedings of the 161st Symposium of the International Astronomical Union, held in Potsdam, Germany, August 23-27, 1993 / edited by H.T. MacGillivray ... [et al.].

p. cm.

Includes index.

ISBN 0-7923-2878-7(alk. paper)

1. Imaging systems in astronomy--Congresses. 2. Astronomy--Observations--Congresses. 3. Astronomical photometry--Congresses.

4. Wide-angle photography--Congresses. I. MacGillivray, H. Y.

II. Title.

QB51.3.I45148 1993a

522--dc20

94-12286

ISBN 0-7923-2878-7

*Published on behalf of
the International Astronomical Union
by*

Kluwer Academic Publishers, P.O. Box 17, 3300 AA Dordrecht, The Netherlands.

*Kluwer Academic Publishers incorporates
the publishing programmes of
D. Reidel, Martinus Nijhoff, Dr W. Junk and MTP Press.*

*Sold and distributed in the U.S.A. and Canada
by Kluwer Academic Publishers,
101 Philip Drive, Norwell, MA 02061, U.S.A.*

*In all other countries, sold and distributed
by Kluwer Academic Publishers Group,
P.O. Box 322, 3300 AH Dordrecht, The Netherlands.*

Printed on acid-free paper

*All Rights Reserved
© 1994 International Astronomical Union*

No part of the material protected by this copyright notice may be reproduced or utilized in any form or by any means, electronic or mechanical including photocopying, recording or by any information storage and retrieval system, without written permission from the publisher.

Printed in the Netherlands

TABLE OF CONTENTS

PREFACE	xix
PHOTOGRAPH OF PARTICIPANTS	xxi
LIST OF PARTICIPANTS	xxiii
WELCOMING ADDRESS	xxxi
R. West	

Part One: Wide-Field Sky Surveys and Patrols

THE IMPORTANCE OF WIDE-FIELD IMAGING	3
V.A. Lipovetsky	
INFRARED WIDE-FIELD SURVEYS	13
N. Epchtein	
WIDE FIELD IMAGING AND PHOTOMETRY WITH 2k x 2k CCD	17
J.-S. Chen	
BEIJING — ARIZONA COLOR (BAC) SKY SURVEY	20
J.-S. Chen	
VERY WIDE-FIELD MONITORING OF THE SKY	23
R. Hudec, J. Soldán	
THE SECOND PALOMAR SKY SURVEY	29
I.N. Reid	
THE PALOMAR OBSERVATORY-EUROPEAN OBSERVATORY PHOTOGRAPHIC ATLAS OF THE NORTHERN SKY	30
S. Class, J. Quebatte, G. Strigl	
FIRST STEPS TOWARD A CCD-BASED SKY PATROL	33
P. Kroll, T. Lehmann	
SNe FROM SURVEYS AND PATROLS	37
C. Pollas	
SONNEBERG OBSERVATORY: SKY PATROL, FIELD PATROL, THE WORLD'S LARGEST LIVING WFPA	43
H.-J. Bräuer, G.A. Richter	

THE SCHMIDT TELESCOPE AT CALAR ALTO OBSERVATORY	46
K. Birkle, H. Belleman, H. Elsässer	
GERMAN ASTROPHYSICAL SPACE PROJECTS	49
W. Klinkmann	
MOUSE: A MINI OBSERVATORY FOR UV SPACE EXPLORATION OF THE GALACTIC POLES AND EQUATOR	52
R. Ragazzoni, L. Buson, M. Turatto, A. Bianchini, E. Cappellaro, M. Cecconi, F. La Franca, U. Munari, S. Ortolani, I. Porro, P. Rafanelli, R. Stagni, F. Bertola, P.L. Bernacca	
GLAZAR-2: A WIDE-FIELD CAMERA ABOARD THE MIR SPACE STATION	55
H.M. Tovmassian, Y.M. Khodjayants, M.N. Krmoyan, R.V. Isadjanian, O.N. Gasparian, A.Z. Zakharian, D. Huguenin	
SIMULTANEOUS OPTICAL/GAMMA-RAY OBSERVATIONS OF GAMMA-RAY BURSTS	57
J. Greiner	
WIDE-FIELD PHOTOGRAPHIC VERSUS WIDE-FIELD CCD TECHNIQUES IN THE ACTIVITY ANALYSIS OF dM STARS	61
G. Szécsényi-Nagy	
<u>Part Two: Digital Detectors in Wide-Field Imaging</u>	
THE CCD ARRAY CAMERA FOR THE MACHO PROJECT	67
S. Marshall	
LITE: THE LARGE IMAGING TELESCOPE	73
L. Vigroux	
THE HITCHHIKER PARALLEL CAMERA AND STUDIES OF FAINT GALAXIES	77
J.B. Jones, S.P. Driver, J.I. Davies, S. Phillipps, I. Morgan, M.J. Disney	
CCD IMAGING WITH A 1° FIELD	79
R.-J. Dettmar, B.A. Skiff, K.M. Xilouris	
DIGITAL IMAGE PROCESSING AND CCD IMAGING AT GOTHARD ASTROPHYSICAL OBSERVATORY	82
I. Jankovics, J. Kovács, I.J. Vincze	
A FLAIR FOR MULTI-OBJECT SPECTROSCOPY	85
Q.A. Parker, F.G. Watson	
NEAR-INFRARED IMAGING WITH A SCHMIDT TELESCOPE	89
K. Yanagisawa, N. Itoh, T. Ichikawa, K. Tarusawa, M. Ueno	

TABLE OF CONTENTS	vii
THE ESO MEASURING MACHINES P. Grosbøl	91
OPTICAL SYSTEMS FOR THE 'LARGE IMAGING TELESCOPE' (LITE) Carl Zeiss Jena GmbH	93
WIDE-FIELD-IMAGING 3-MIRROR-SYSTEMS WITH HIGH LIGHT GATHERING POWER AND A WIDE-FIELD OPTICAL SYSTEM FOR THE 'LARGE IMAGING TELESCOPE' (LITE) U. Laux	101
NEWLY DEVELOPED DIFFRACTION LIMITED OPTICS UP TO 180 DEGREES OBJECT FIELD F. Gallert	109
<u>Part Three: Photography in Wide-Field Imaging</u>	
PHOTOGRAPHY IN WIDE-FIELD ASTRONOMY M. Hartley	117
KODAK AND THE FUTURE OF ASTRONOMICAL PHOTOGRAPHY D. Malin	127
USE OF KODAK TECH-PAN FILM AT THE UKSTU Q.A. Parker, S. Phillipps, D.H. Morgan, D.F. Malin, K.S. Russell, M. Hartley, A. Savage	129
PHOTOGRAPHIC WIDE-FIELD IMAGING FROM SCHMIDT PLATES — I H.-H. Heyer, J. Quebatte, H. Zodet	141
PHOTOGRAPHIC WIDE-FIELD IMAGING FROM SCHMIDT PLATES — II H. Zodet, J. Quebatte, H.-H. Heyer	147
MICROSPOTS ON IIIa- EMULSIONS: NEW RESULTS S.B. Tritton, D.H. Morgan, M.R. Cranston	151
HYDROGEN-SENSITIZED FINE-GRAIN QUASI-T ASTRONOMICAL PLATES D.K. Mikhailov, P.V. Sheglov	157
<u>Part Four: Digitised Wide-Field Surveys</u>	
DIGITIZATION IN ASTRONOMY D.G. Monet	163
DIGITIZATION PROGRAMS AT STScI B.M. Lasker	167

ASTROMETRIC PROGRAMS WITH THE NEW HAMBURG PLATE MEASURING MACHINE	173
Chr. De Vegt, L. Winter, N. Zacharias	
A DEEP WIDE-FIELD SURVEY FROM DIGITALLY STACKED SCHMIDT PLATES	177
M.R.S. Hawkins	
SCANNING THE SONNEBERG PLATE ARCHIVE WITH DIA	183
P. Kroll, P. Neugebauer	
A UNIVERSAL MICROPHOTOMETER WITH A ROTATING SLIT: BRIEF DESCRIPTION AND USE IN ASTRONOMICAL TASKS	185
P. Kotrč, J. Zicha	
A UNIVERSAL MICROPHOTOMETER AND SOLAR CORONA POLARIMETRY . . .	188
P. Kotrč, M. Knížek, J. Sýkora	
<u>Part Five: Image Detection, Cataloguing and Classification</u>	
IMAGE DETECTION, CHARACTERIZATION AND CLASSIFICATION, AND THE FUTURE ROLE OF CCDs IN WIDE-FIELD ASTROMETRY	193
W.F. van Altena	
CATALOGING THE NORTHERN SKY USING A NEW GENERATION OF SOFTWARE TECHNOLOGY	205
N. Weir, S. Djorgovski, U. Fayyad, J.D. Smith, J. Roden	
IMAGE INVENTORY USING THE WAVELET TRANSFORM	213
A. Bijaoui	
DATA COMPRESSION AND WAVELET TRANSFORMS	219
G.M. Richter, M. Capaccioli, G. Longo, H. Lorenz	
STAR IMAGE IDENTIFICATION AND CHARACTERIZATION ON ASTROGRAPHIC PLATES	225
A. López García, A. Ortiz Gil, J.M. Martínez González, V. Yershov	
CLASSIFICATION: ASTRONOMICAL AND MATHEMATICAL OVERVIEW	227
F. Murtagh	
THE PERFORMANCE OF NEURAL NETWORKS IN ASTRONOMICAL IMAGE CLASSIFICATION	235
S.C. Odewahn	
AUTOMATIC MORPHOLOGICAL CLASSIFICATION OF GALAXIES	243
S. Okamura, M. Doi, M. Fukugita, N. Kashikawa, M. Sekiguchi, K. Shimasaku, N. Yasuda	

FAINT OBJECT CLASSIFICATION USING ARTIFICIAL NEURAL NETWORKS . . .	249
M. Serra-Ricart	
RECENT DEVELOPMENTS IN THE WORK ON AUTOMATED SPECTRAL CLASSIFICATION BY MEANS OF OBJECTIVE PRISM SPECTRA	253
V. Malyuto, T. Shvelidze	
AN EXTENDED SCHEME OF SPECTRAL CLASSIFICATION FOR OBJECTIVE PRISM SPECTRA	255
P.A. Hantzios, E. Kontizas, F. Pasian, A. Dapergolas, M. Kontizas, R. Smareglia	
<u>Part Six: Calibration: Astrometric and Photometric</u>	
REFERENCE CATALOGUES — PRESENT STATUS AND FUTURE PROSPECTS . .	261
S. Roeser	
THE SYSTEM AND QUALITY OF THE AGK3U	271
L.G. Taff	
GSC 1.2 — A SUBPLATE REDUCTION OF THE GSC	277
B. Bucciarelli, J.B. Doggett, C.R. Sturch, B.M. Lasker, B.J. McLean, M.G. Lattanzi, L.G. Taff	
SIMULATION OF STELLAR IMAGES FOR SCHMIDT PLATE ASTROMETRY	280
L. Lanteri, L. Pividori, M.G. Lattanzi, B.M. Lasker	
ASTROMETRY WITH WIDE-FIELD TELESCOPES IN THE ABASTUMANI ASTROPHYSICAL OBSERVATORY	283
R.I. Kiladze, S.M. Chanturiya	
SOME RESULTS OF CCD-CAMERA BASED ASTROMETRIC PLATE MEASUREMENTS	285
N. Zacharias, C. de Veig, L. Winter, W. Weneit	
OPTIMIZED MODEL-FUNCTIONS FOR CCD-CAMERA BASED ASTROMETRIC PLATE MEASUREMENTS	288
L. Winter	
ASTROMETRIC STANDARD FIELDS FOR CCD OBSERVATIONS OF DOUBLE STARS	291
D. Sinachopoulos, E. Oblak, M. Geffert, J. Colin, J.-F. LeCampion, U. Hopp	
PHOTOMETRIC CALIBRATION AND LARGE-SCALE CLUSTERING IN THE UNIVERSE	295
R. Fong, N. Metcalfe, T. Shanks	

PHOTOMETRIC CALIBRATORS FOR ALL-SKY SURVEYS: THE GSPC-II PROGRAM	301
A. Ferrari, E.D. Siciliano, A. Pizzuti, B. Bucciarelli, G. Massone, M. Postman, D.M. Rehner, C.R. Sturch, M.G. Lattanzi, B.M. Lasker	
STELLAR PHOTOMETRY WITH WIDE FIELD CCDs: NGC 6822	305
A. Aparicio, C. Gallart, J.M. Vílchez	
PECULIARITIES OF THE INTERNAL PHOTOMETRICAL CALIBRATION METHOD USING DENSITY STELLAR PROFILES	309
H. Markov	
MULTI-PARAMETRIC IRIS-PHOTOMETRY	311
T.B. Georgiev	
A PHOTOMETRICAL INVESTIGATION ON THE RC SYSTEM OF THE 2m RITCHEY-CHRETIEN COUDE TELESCOPE OF THE ROZHEN OBSERVATORY	312
R.G. Getov	
INTENSITY CALIBRATION IN THE PRESENCE OF A DISTURBING EFFECT DEPENDENT ON WAVELENGTH	314
P. Kotrč	
BRIGHTNESS CALIBRATION OF DIGITIZED OBJECTIVE-PRISM PLATES	317
D. Engels, L. Cordis, T. Köhler	
DIGITAL PROCESSING ON COMETS	321
D. Kubáček, E.M. Pittich, J. Zvolánková	
<u>Part Seven: Archiving and Databases</u>	
THE FUTURE OF MEMORY: ARCHIVING ASTRONOMICAL INFORMATION	331
M.J. Kurtz	
DATA STORAGE TECHNOLOGY: COPING WITH THE EVOLUTION	339
B. Pirenne	
ALADIN: AN INTERACTIVE DEEP SKY MAPPING FACILITY	347
Ph. Paillou, F. Bonnarel, F. Ochsenbein, M. Crézé	
CLIENT/SERVER ACCESS TO THE SIMBAD DATABASE WITHIN THE ALADIN PROJECT	353
F. Bonnarel, E. Divetain, F. Ochsenbein, Ph. Paillou, M. Wenger	
PICKLES: A WIDE-FIELD IMAGING TOOL	356
L.W. Fredrick, G.F. Benedict, R. Duncombe, O.G. Franz, P.D. Hemenway, W.H. Jeffreys, B. McArthur, J. McCartney, E. Nelan, P.J. Shelus, D. Story, A.L. Whipple, W. van Altena	

THE WG WFI PLATE DATABASE (WFPDB): PRESENT STATUS	359
M.K. Tsvetkov, K.Y. Stavrev, K.P. Tsvetkova, P.V. Ivanov, M.S. Iliev	
THE HARVARD COLLEGE OBSERVATORY PLATE COLLECTION	365
M.L. Hazen	
THE PLATE ARCHIVE OF THE TAUTENBURG SCHMIDT TELESCOPE	367
R. Ziener	
THE SONNEBERG PLATE COLLECTION: HANDLING THE ARCHIVE	369
B. Fuhrmann, P. Kroll, H.-J. Bräuer	
DIRECT-PHOTOGRAPHY OBSERVATIONS WITH THE 2 M RCC TELESCOPE AT NAO-ROZHEN: CATALOGUE OF PLATES AND ARCHIVE-DATA ANALYSIS . .	371
K.Y. Stavrev, I.S. Barzova	
CATALOGUE OF THE ROZHEN OBSERVATORY SCHMIDT TELESCOPE	377
A. Mutafov, P. Ilcheva, M. Kusheva, M. Michailov, Z. Borisov, N. Lazarov	
FLARE STARS DATABASE	380
M. Tsvetkov, M. Chukova, K. Tsvetkova	
<u>Part Eight: Solar System Surveys</u>	
ASTEROID AND COMET SURVEYS	385
B.G. Marsden	
<u>Part Nine: Galactic Structure</u>	
STAR COUNTS AND THE MILKY WAY STRUCTURE	403
A.C. Robin	
THE LUMINOSITY AND MASS FUNCTIONS AT THE BOTTOM OF THE MAIN SEQUENCE	411
C. Tinney	
THE GALACTIC DISC EVOLUTION FROM (V, B - V) COUNTS AT THE GALACTIC POLE	417
M. Haywood, A.C. Robin, O. Bienaymé	
VERTICAL METALLICITY GRADIENT OF THE GALAXY BASED ON UBV STARCOUNT DATA	420
T. Yamagata, Y. Yoshii	
DEEP MULTI-COLOUR STARCOUNTS	423
I.N. Reid, S.R. Majewski	

ASTROMETRY AND GALACTIC STRUCTURE	425
S.R. Majewski	
THE VERTICAL STRUCTURE AND KINEMATICS OF THE GALAXY	435
C. Soubiran	
WIDE-FIELD STELLAR STATISTICS FROM TAUTENBURG SCHMIDT PLATES	441
E. Schilbach, R.-D. Scholz, S. Hirte	
STELLAR KINEMATICS IN THE GALACTIC NORTH POLE REGION ON THE BASIS OF TAUTENBURG SCHMIDT TELESCOPE PLATES	444
N.V. Kharchenko, E. Schilbach, R.-D. Scholz	
A COMPLETE, MULTICOLOUR SURVEY OF ABSOLUTE PROPER MOTIONS IN THE ANTICENTRE DIRECTION AT INTERMEDIATE LATITUDE: KINEMATICS OF THE GALAXY'S STELLAR POPULATIONS	447
D.K. Ojha, O. Bienaymé, A.C. Robin	
MILLI-ARCSECOND PROPER MOTIONS IN THE PLEIADES	450
E. Schilbach, J. Guibert, J. Souchay	
ORBITS OF GALACTIC GLOBULAR CLUSTERS FROM SCHMIDT PLATE ASTROMETRY	453
M. Odenkirchen, R.-D. Scholz, M.J. Irwin	
MEMBERSHIP AND INTERNAL MOTIONS OF FAINT STARS IN THE GLOBULAR CLUSTER M 3	461
R.-D. Scholz, N.V. Kharchenko	
ABSOLUTE PROPER AND SPACE MOTION OF THE GLOBULAR CLUSTER M 2	464
M. Geffert, C. Forner, M. Hiesgen, A.R. Klemola	
OBJECTIVE-PRISM SURVEYS OF THE GALAXY	467
O. Kurtanidze, M. Nikolashvili	
OBJECTIVE PRISM STUDY OF STAR FORMING REGIONS	470
M. Kun	
OBSERVATIONS OF OB STELLAR ASSOCIATIONS WITH THE SPACE TELESCOPE GLAZAR	473
H.M. Tovmassian, R.Kh. Hovhannessian, R.A. Epremian, D. Huguenin	
WIDE-FIELD OBSERVATIONS OF VARIABLE STARS IN THE REGION OF NGC 7129	475
E.H. Semkov	

THE BINARIES-IN-CLUSTERS PROGRAM IN THE AGE OF IMAGING	478
E.F. Milone, J.R. McVean, W. Lu, S. J. Schiller, G. Miller	

FIRST OBSERVATIONS WITH THE BONN WIDE-FIELD PHOTOMETER AND POLARIMETER (WWFPP): SURFACE POLARIMETRY OF THE CRAB NEBULA	481
Th. Leiber, K. Reif	

CCD IMAGING OF NEARBY AGED PLANETARY NEBULAE	484
J. Papamastorakis, K.M. Xilouris, E.V. Paleologou	

Part Ten: The Magellanic Clouds

NEW RESULTS ON THE MAGELLANIC CLOUDS	489
D. Hatzidimitriou	

EXTENDED SURVEYS OF MC STAR CLUSTERS	497
M. Kontizas, E. Kontizas	

H α SURVEY OF THE MILKY WAY AND MAGELLANIC CLOUDS	503
M. Marcelin, P. Amram, J. Boulesteix, Y.M. Georgelin, Y.P. Georgelin, A. Laval, E. Le Coarer, M. Rosado, G. Golde	

SURVEYS FOR FIELD CARBON STARS IN THE MAGELLANIC CLOUDS	509
M. Azzopardi, E. Rebeirot, B.E. Westerlund	

CARBON STARS IN THE SMC	513
D.H. Morgan, D. Hatzidimitriou	

WIDE FIELD STAR COUNT MAPPING OF LARGE SCALE AREAS OF STAR FORMATION IN THE LARGE MAGELLANIC CLOUD	516
E. Kontizas, S.E. Maravelias, A. Dapergolas, Y. Bellas-Velidis, M. Kontizas	

QUALITATIVE ANALYSIS OF THE STELLAR CONTENT IN LMC CLUSTERS AND FIELDS USING OBJECTIVE PRISM SCHMIDT PLATES	518
E. Kontizas, A. Dapergolas, E. Xiradaki, M. Kontizas	

CCD AND SCHMIDT-PLATE PHOTOMETRY AND ASTROMETRY IN REGION E OF THE LMC	520
D.J. Bomans, H.-J. Tucholke, J.-M. Will, K.S. de Boer	

Part Eleven: Local Group Dwarf Galaxies and LSB Galaxies

DWARF SPHEROIDAL GALAXIES	525
P.B. Eskridge	

ABSOLUTE PROPER MOTIONS OF THE DWARF SPHEROIDAL GALAXIES IN DRACO AND URSA MINOR	535
R.-D. Scholz, M.J. Irwin	
SURVEYS OF LOW SURFACE BRIGHTNESS GALAXIES WITH 4415 FILMS	541
S. Phillipps, Q.A. Parker	
RECENT RESULTS FROM LOW SURFACE BRIGHTNESS GALAXY SURVEYS . . .	545
S. Phillipps, J.I. Davies, J.A. Turner	
AUTOMATIC DETECTION OF LOW-SURFACE BRIGHTNESS GALAXIES ON DIGITAL IMAGES	547
R.M. Smith, G.J. Privett, S. Phillipps, J.I. Davies	
SURFACE PHOTOMETRY OF LOW-SURFACE-BRIGHTNESS GALAXIES IN THE AREA OF THE NGC 972 GROUP OF GALAXIES	553
J. Vennik, G.M. Richter	
<u>Part Twelve: Properties of Nearby Galaxies</u>	
GLOBAL PROPERTIES OF NEARBY GALAXIES	559
M. Capaccioli, N. Caon, M. D'Onofrio	
INTERACTING GALAXIES IN THE VIRGO CLUSTER	587
D. Malin	
LUMINOSITY FUNCTION AND SPATIAL DISTRIBUTION OF NEARBY GALAXIES	577
K.-H. Schmidt, T. Boller	
HUNTING FOR GLOBULAR CLUSTER CANDIDATES IN THE FAR HALO ($d > 20$ kpc) OF M 31 WITH THE TAUTENBURG SCHMIDT TELESCOPE	583
L. Federici, F. Bonoli, F. Fusi Pecci, B. Marano, F. Börngen, H. Meusinger	
AN EFFICIENT METHOD TO SURVEY TYPICAL OBJECTS IN NEARBY GALAXIES	587
G. Muratorio, M. Azzopardi	
DUST IN NEARBY DWARF GALAXIES	589
K.-H. Schmidt, T. Boller	
UBV PHOTOMETRY IN THE GROUP OF GALAXIES NGC 2805, NGC 2814, NGC 2820 AND MKN 108	592
B.P. Artamonov	
PHOTOGRAPHIC SURFACE PHOTOMETRY OF BRIGHT GALAXIES IN THE M 81 GROUP	594
R.G. Getov	

A BURST OF STAR FORMATION IN GALAXIES OF THE M 81 GROUP	596
B.P. Artamonov	

WIDE-FIELD IMAGING OF NEARBY GALAXIES IN NEAR-INFRARED BANDS . . .	599
T. Ichikawa, K. Tarusawa, K. Yanagisawa, N. Itoh, M. Ueno	

Part Thirteen: Properties and Clustering of Galaxies and Clusters

SURFACE PHOTOMETRY OF GALAXIES IN THE PISCES-PERSEUS REGION	603
M. Watanabe, T. Ichikawa, M. Fukugita, K. Tarusawa, S. Okamura	

AN AUTOMATIC APPROACH FOR SELECTING NEW H α EMISSION-LINE GALAXIES	611
O. Alonso, J. Zamorano, M. Rego, J. Gallego, A.G. Vitores	

A SURVEY FOR ULTRAVIOLET-EXCESS GALAXIES WITH THE KISO SCHMIDT TELESCOPE	615
B. Takase, N. Miyauchi-Isobe	

PHOTOMETRY OF HICKSON COMPACT GROUP N.90	619
G. Longo, H. Lorenz, G. Richter, G. Busarello	

OBSERVATIONAL PROPERTIES OF THE SHAKHBAZIAN GROUPS SHKH 30 AND SHKH 360	623
H. Tiersch, H. Oleak, D. Stoll, H. Böhringer	

THE PHOTOMETRIC AND GEOMETRIC PARAMETERS OF GALAXIES IN CLUSTERS A 1983, 2065	626
O. Kurtanidze	

LUMINOSITY DISTRIBUTION IN cD CLUSTERS	629
F.W. Baier	

WIDE-FIELD GALAXY AND CLUSTER SURVEYS USING COSMOS	632
H.T. MacGillivray, D.J. Yentis	

GALAXY CLUSTERING TO $B = 27^m$	635
N. Roche, T. Shanks, N. Metcalfe, R. Fong	

GALAXY NUMBER-COUNTS TO $B = 28^m$	645
N. Metcalfe, T. Shanks, N. Roche, R. Fong	

THE EVOLUTION OF GALAXIES IN THE LAST 10 GYR	649
K. Rakos, J. Schombert, T. Maindl, N. Unger, P. Obitsch	

OPTICAL IDENTIFICATION OF ROSAT ALL-SKY SURVEY GALAXY CLUSTER CANDIDATES	653
B.J. McLean, H. Böhringer, R. Burg, R. Giacconi, J.P. Huchra, W. Voges	
ROSAT-DETECTED GALAXIES IN THE IRAS FAINT SOURCE DATABASE (FSDB)	658
W. Voges, Th. Boller, C. Lonsdale, R. Wolstencroft	
RAPID X-RAY VARIABILITY AND THE Fe II PROBLEM IN I Zw 1 OBJECTS	660
Th. Boller, J. Trümper, S. Molendi, S. Schaeidt, H. Fink	
EXTREME STARBURST OR CENTRAL ACTIVITY IN X-RAY LUMINOUS IRAS GALAXIES	662
Th. Boller, M. Dennefeld	
CLUSTER ABUNDANCE AS TEST OF THE PRIMORDIAL PERTURBATION SPECTRUM	664
V. Müller	
<u>Part Fourteen: Mapping the Large-Scale Structure</u>	
MAPPING THE LARGE-SCALE STRUCTURE	669
V. de Lapparent	
A REDSHIFT SURVEY IN THE SOUTH GALACTIC POLE REGION	687
G. Vettolani, E. Zucca, A. Cappi, R. Merighi, M. Mignoli, G. Stirpe, G. Zamorani, C. Collins, H. MacGillivray, C. Balkowski, J.M. Alimi, A. Blanchard, V. Cayatte, P. Felenbok, S. Maurogordato, D. Proust, G. Chincarini, L. Guzzo, D. Maccagni, R. Scaramella, M. Ramella	
LARGE-SCALE STRUCTURE IN THE DURHAM/UKST GALAXY REDSHIFT SURVEY	693
A. Broadbent, T. Shanks, F.G. Watson, Q.A. Parker, R. Fong, A.P. Oates, C.A. Collins	
THE MUENSTER REDSHIFT PROJECT (MRSP)	699
P. Schuecker, W.C. Seitter, P. Boschan, R. Budell, B. Cunow, R. Duemmler, M. Naumann, H.-A. Ott, G. Spiekermann, D. Teuber, R. Ungruhe	
SEARCH FOR FAINT GALAXIES TOWARDS NEARBY VOIDS	705
U. Hopp, B. Kuhn, H. Elsässer, K. Birkle, U. Thiele	
SLITLESS SPECTROSCOPY WITH PHOTOGRAPHIC AND CCD DETECTORS ACROSS LARGE FIELDS	709
G. Comte, C. Surace	
UNBIASED MULTI-PARAMETRIC ESTIMATIONS OF DISTANCES AND PECULIAR VELOCITIES OF THE GALAXIES	715
T.B. Georgiev	

Part Fifteen: Properties and Clustering of Objects at Large Redshifts

QUASAR VARIABILITY FROM MICROLENSING	721
M.R.S. Hawkins	
THE HAMBURG/ESO SURVEY FOR BRIGHT QSOs — SLITLESS SPECTROSCOPY AT HIGH RESOLUTION	723
L. Wisotzki	
THE HAMBURG QUASAR SURVEY	729
H.-J. Hagen, D. Engels, D. Groote, D. Reimers	
THE SECOND BYURAKAN SURVEY	731
J. Stepanian	
A STUDY OF THE OPTICAL LONG-TERM BEHAVIOUR OF QUASARS	737
H. Meusinger, S. Klose, R. Ziener	
SYSTEMATIC SEARCH FOR QUASAR CANDIDATES USING THE MAMA MICRODENSITOMETER	740
O. Moreau, E. Gosset, H. Reboul, C. Vanderriest	

Part Sixteen: Conference Summary and Resolutions

AN OVERVIEW OF WIDE FIELD IMAGING	745
V. Trimble	
IAU SYMPOSIUM 161 RESOLUTION: Photographic Plate Supply	753
IAU SYMPOSIUM 161 RESOLUTION: The Future of Sonneberg Observatory	754
IAU WORKING GROUP ON WIDE-FIELD IMAGING: Statement of Goals	755
AUTHOR INDEX	756