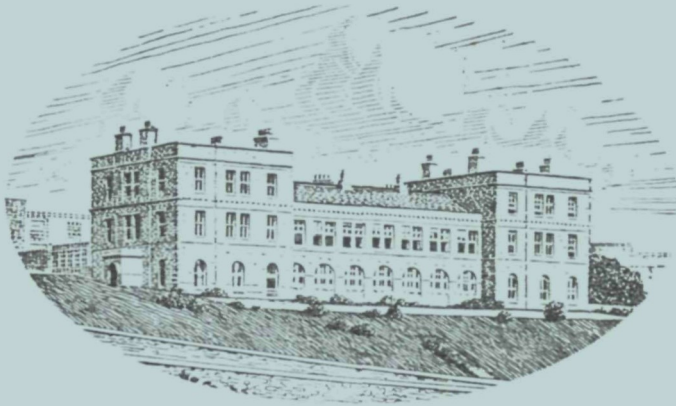


JOURNAL OF THE
MARINE BIOLOGICAL ASSOCIATION
OF THE UNITED KINGDOM



THE PLYMOUTH LABORATORY

VOLUME 35, No. 2
(issued June 1956)

CAMBRIDGE
AT THE UNIVERSITY PRESS
1956

Price Twenty-seven Shillings net
(U.S.A \$4.50)

MARINE BIOLOGICAL ASSOCIATION OF THE UNITED KINGDOM

PATRON

H.R.H. THE DUKE OF EDINBURGH, K.G., K.T., F.R.S.

OFFICERS AND COUNCIL

President: Prof. A. V. HILL, C.H., O.B.E., Sc.D., LL.D., F.R.S.

Vice-Presidents

The Earl of IVEAGH, K.G., C.B., C.M.G.
Sir NICHOLAS E. WATERHOUSE, K.B.E.
Col. Sir EDWARD T. PEEL, K.B.E., D.S.O., M.C.
Vice-Admiral Sir JOHN A. EDGEELL, K.B.E., C.B.,
F.R.S.
Sir EDWARD J. SALISBURY, Kt., C.B.E., D.Sc., F.R.S.
Admiral Sir AUBREY C. H. SMITH, K.B.E., C.B.,
M.V.O.

A. T. A. DOBSON, C.B., C.V.O., C.B.E.
Major E. G. CHRISTIE-MILLER
MORLEY H. NEALE, C.B.E.
The Earl of VERULAM
Prof. Sir JAMES GRAY, Kt., C.B.E., M.C., Sc.D.,
LL.D., F.R.S.

Honorary Members

Dr H. B. BIGELOW
Dr R. DOHRN
Prof. LOUIS FAGE

Prof. HANS PETTERSSON
Prof. H. U. SVERDRUP

COUNCIL

Elected Members

Miss ANNA M. BIDDER, Ph.D.
J. N. CARRUTHERS, D.Sc.
D. J. CRISP, Ph.D.
Miss VERA FRETTER, D.Sc.
MICHAEL GRAHAM, C.M.G., O.B.E.
Prof. H. MUNRO FOX, F.R.S.
Prof. J. E. HARRIS, Ph.D., F.R.S.
Prof. A. L. HODGKIN, F.R.S.

N. A. MACKINTOSH, C.B.E., D.Sc.
G. E. NEWELL, Ph.D.
Prof. LILY NEWTON, D.Sc.
C. E. LUCAS, D.Sc.
Prof. J. E. SMITH, Sc.D.
Prof. V. C. WYNNE-EDWARDS
Prof. C. M. YONGE, C.B.E., D.Sc., F.R.S.

Governors

R. G. R. WALL (Ministry of Agriculture and Fisheries)
The Worshipful Company of Fishmongers:
The Prime Warden
Major E. G. CHRISTIE-MILLER
HARRISON S. EDWARDS
Prof. A. C. HARDY, D.Sc., F.R.S. (Oxford University)

S. SMITH, Ph.D. (Cambridge University)
EDWARD HINDLE, Sc.D., F.R.S. (British Association)
N. B. MARSHALL (Zoological Society)
Prof. Sir JAMES GRAY, Kt., C.B.E., M.C., Sc.D.,
LL.D., F.R.S. (Royal Society)

Hon. Treasurer: Major E. G. CHRISTIE-MILLER, 38 Hyde Park Street, London, W. 2

Secretary: F. S. RUSSELL, C.B.E., D.S.C., D.F.C., LL.D., F.R.S., The Laboratory, Citadel Hill, Plymouth, Devon

SCIENTIFIC STAFF

Director: F. S. RUSSELL, C.B.E., D.S.C., D.F.C., LL.D., F.R.S.

H. W. HARVEY, M.A., Sc.D., F.R.S. (*Hydrologist*)
G. A. STEVEN, D.Sc., F.R.S.E. (*Zoologist*)
D. P. WILSON, D.Sc., F.R.P.S. (*Zoologist*)
L. H. N. COOPER, D.Sc., F.R.I.C. (*Chemist*)
G. M. SPOONER, M.B.E., M.A. (*Zoologist*)
MARY W. PARKE, D.Sc., Ph.D. (*Botanist*)
J. S. ALEXANDROWICZ, Ph.D., M.D. (Jena) (*Histologist*)
P. G. CORBIN, B.A. (*Zoologist*)

J. A. C. NICOL, B.Sc., M.A., D.Phil. (*Experimental
Zoologist*)
B. C. ABBOTT, B.Sc., Ph.D., A.Inst.P. (*Biophysicist*)
E. J. DENTON, B.A., B.Sc., Ph.D. (*Physiologist*)
N. A. HOLME, M.A. (*Bursar and Zoologist*)
D. B. CARLISLE, M.A., D.Phil. (*Endocrinologist*)
G. R. FORSTER, B.Sc. (*Zoologist*)
Miss D. BALLANTINE, B.Sc. (*Botanist*)

T. I. SHAW, M.A., Ph.D. (*Special Appointment: Physiologist*)

June 1956