

Digital Darkfield Analysis of Lattice Fringe Images with ImageJ

P. Fraundorf

Center for NanoScience/Physics & Astronomy, University of Missouri StL, St. Louis MO 63121 USA.

Digital-darkfield analysis involves the spatial mapping of selected frequencies across a digitized image, much as analog (e.g. electron-optical) darkfield-imaging allows one to locate crystals responsible for a given diffraction spot. This analysis involves a type of image decomposition which, like wavelets, is intermediate between direct and reciprocal (spatial-frequency) space [1]. Digital-darkfield analysis is of particular use on images that have well defined spatial-frequencies in them, like lattice-fringe images of atomic-planes encountered edge-on by high-energy electrons in crystalline materials [2-10].

A set of java plugins is posted on the ImageJ wiki at <http://imagejdocu.tudor.lu/>, along with macros for putting them to use. The java plugins include routines for quantitatively converting complex-number arrays to and from RGB images with pixel-intensity proportional to coefficient log-amplitude and pixel-hue linked to coefficient phase. These plugins may also be used by hue-maximization routines, to be described elsewhere.

Some of the routines allow the user to place a circular aperture in the power spectrum of an image, from which periodicity amplitude and phase-gradient (strain) maps are calculated, labeled, and displayed. A periodicity-amplitude map is shown (top right panel) in Fig. 1, for one of the many periodicities in the power spectrum (top center panel) of an electron phase-contrast image of some WC_{1-x} nanocrystals [11] (top left panel). Fig. 2 shows periodicity amplitude banding (left) with twice the frequency of ordinary thickness fringes, as well as the periodicity phase-reversals (right) expected to occur therewith.

Other routines let the user tile frequency space with an array of tiny darkfield (plus one brightfield) images, yielding a tableau containing one direct-space image formed by the spatial-periodicities found in each frequency-space tile. This darkfield-tableau strategy has helped find patterns, like icosahedral twin “bow-ties” and “butterflies” in images of randomly-oriented nanoparticles [12-13].

- [1] P. Fraundorf (2004) arXiv:cond-mat/**040301** <http://arxiv.org/abs/cond-mat/0403017>
- [2] P. Fraundorf and Lu Fei (2004) *Microscopy and MicroAnalysis* **10**:s2, 300-301.
- [3] W. Qin and P. Fraundorf (2005) *Microscopy and MicroAnalysis* **11**:s2, p562-563
- [4] P. Fraundorf, Jinfeng Wang, Eric Mandell and Martin Rose (2006) *M&M* **12**:s2, 1010-1011.
- [5] Martin Rose and P. Fraundorf (2006) *Microscopy and Microanalysis* **12**:s2, 1008-1009.
- [6] P. Fraundorf, J. Liu and E. Mandell (2007) **13**:s2, 992-993.
- [7] P. Fraundorf and Somik Mukherjee (2013), *Microscopy and MicroAnalysis* **19**:s2, 1590-1591.
- [8] Mukherjee S, Ramalingam B, Griggs L, Hamm S, Baker GA, Fraundorf P, Sengupta S, Gangopadhyay S. (2012) *Nanotechnology* **23**(48):485405
- [9] P. Fraundorf, Wentao Qin, P. Moeck and Eric Mandell (2005) *J. Applied Physics* **98**:114308
- [10] P. Wang, A. L. Bleloch, U. Falke and P. J. Goodhew (2006) *Ultramicroscopy* **106**:277-283.
- [11] Wentao Qin and P. Fraundorf (2003) *Ultramicroscopy* **94**:3-4, 246-262.
- [12] P. Fraundorf, Jinfeng Wang, Eric Mandell and Martin Rose (2006) *M&M* **12**:s2, 1010-1011
- [13] P. Fraundorf and Chris Bishop (2013) *Microscopy and MicroAnalysis* **19**:s2, 1804-1805.

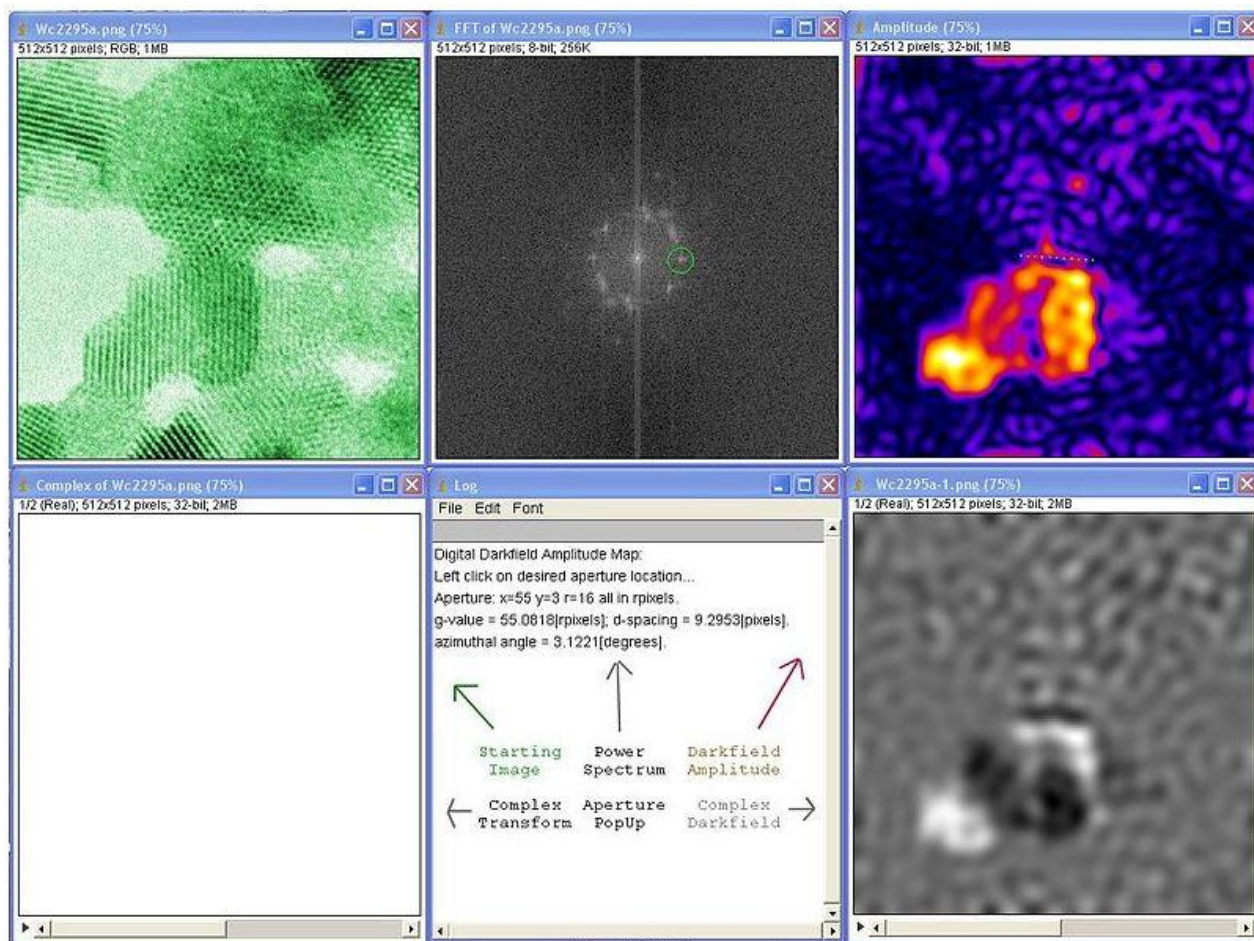


Figure 1. In this example, a crystal with lattice fringes in only one direction is shown (top right) to be responsible for the circled diffraction-spot in the image power-spectrum (top center).

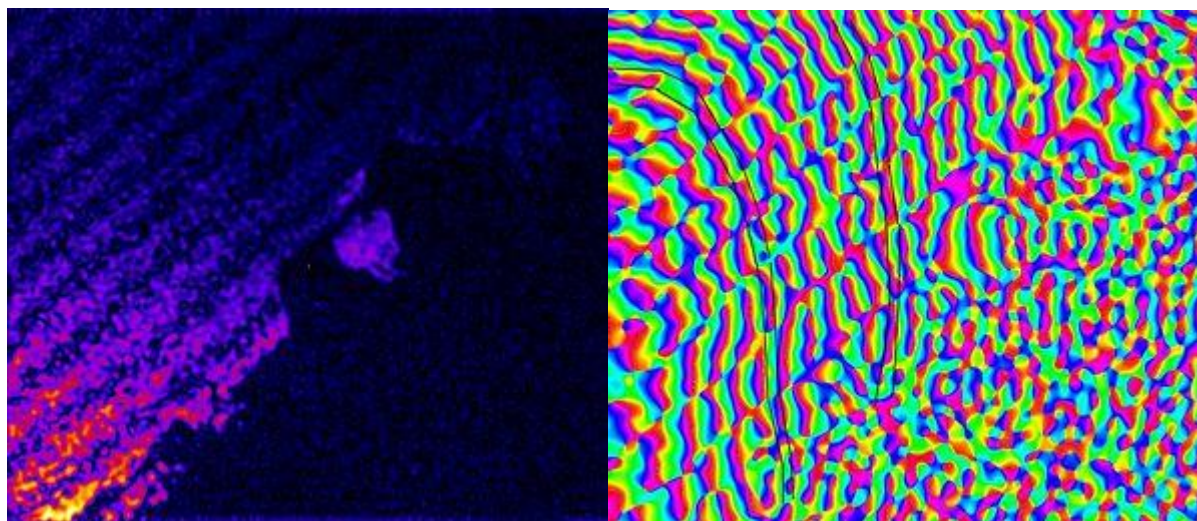


Figure 2: Si-111 darkfield amplitude map of a 4024x3443 pixel lattice image (left), is shown in the darkfield phase image (right) to have phase-inversions expected at thickness-fringe maxima & minima.