

ROMAN SOCIETY

HUGH LAST AND DONALD ATKINSON FUNDS

Applications for grants are invited for financial assistance towards the undertaking, completion or publication of work that relates to any of the general scholarly purposes of the Roman Society, which are to promote the study of the history, archaeology, literature and art of Italy and the Roman Empire, from the earliest times down to about A.D. 700. In addition, postgraduate students may apply for small grants for visits to conferences and for other research expenses. Grants for the organisation of conferences, colloquia and symposia will be considered only in exceptional circumstances.

Applications, together with two references, should be made before 15 January and sent to the Secretary, Roman Society, Senate House, Malet Street, London WC1E 7HU. It is the responsibility of applicants to arrange for their references to reach the Society by the same date. Application forms may be obtained from the Secretary.

SCHOOLS COMMITTEE

The Society's Schools Committee makes grants to schools to help promote the teaching of Latin and Roman studies. Most of the grants are awarded for the purchase of textbooks and other books on Roman topics, but the Committee also makes awards to groups and schools organising lectures or study days on Roman themes. Applications from schools planning to start courses in Latin are particularly welcome.

The annual budget is *c.* £6,000, and the usual level of award is £50 to £350. The Committee meets three times a year. Applications should be sent to the Secretary, Roman Society, Malet Street, London WC1E 7HU to arrive by 1 February, 1 June or 1 November in any year. There is no special application form, but applicants should provide information about the level of their departmental budget, the type of courses taught, and in the case of applications for books, a list of the books wanted with their prices.

REPRESENTATION AT OVERSEAS CONFERENCES

The Council of the Society invites applications from members to attend a conference of a sister body in another country as an official representative of the Society. The Society is willing to pay up to a maximum of £500 for a single conference, to help cover the conference fee and travel costs. The delegate will be required to submit a report to Council on the state of Roman studies in the country concerned. Preference will be given to a delegate going to a country where the subject may benefit from the Society's representation.

Applications should be sent to the Secretary, at least six months before the conference, for approval by Council.

ARCHAEOLOGY COMMITTEE

The Archaeology Committee was formed in 1993. Its original brief was to organise a regular conference to act 'as a forum where those interested in the archaeology of the Roman Empire and those more specifically concerned with Roman Britain' could come together. This initiative has led to a highly successful series of international, biennial conferences, the first three being held in the Universities of Reading, Nottingham and Durham respectively. The fourth will be in the University of Glasgow from 29 March to 1 April 2001; further details and a booking form will be circulated in September 2000.

The Committee also acts as a conduit through which the Society's advisory role in archaeological matters, as one of the national period societies, can be fulfilled. It considers reports and responds as appropriate. The Committee plans to organise a series of lectures on Roman topics outside London in association with some of the regional societies.

The current members are: Miss L. Allason-Jones (Chairman), Mr R.J. Brewer, Dr A.S. Esmonde Cleary, Dr V. Gaffney, Dr W.B. Hanson, Dr I.P. Haynes, Dr R.C. Hingley, Dr S. James, Dr P.C. Roberts, Dr S.A. Scott, Dr C.J. Smith and a representative of the Theoretical Roman Archaeology Conference.

HELLENIC AND ROMAN SOCIETIES

SLIDES COLLECTION

The Slides Collection contains over 6,700 coloured 35 mm slides covering a wide variety of subjects, including sites on the Greek mainland, the Greek islands, Cyprus, Rome, Italy and the Roman Empire, Etruscan tomb paintings, Greek vases, Roman frescoes and mosaics, the Roman army, and Roman Britain. Slides of artefacts form a large part of the collection and include bronzes, jewellery and vases as well as maps, plans, models and reconstructions. A computerised subject index is available. A Greek Slide Catalogue is available at £7, a Roman Slide Catalogue at £6 or both for £11 (postage £1 extra for each catalogue).

Individual slides and sets with notes may be hired by members. Filmstrips are available for sale. Further details may be obtained from the Keeper of Slides or from the web-site: <http://www.sas.ac.uk/icls/library/slides.htm>.

WINNINGTON-INGRAM TRAINEE LIBRARIAN POST

The Joint Library of the Hellenic and Roman Societies, run in conjunction with the library of the Institute of Classical Studies, is recognised as a premier international research library in Classics. A fund has been established in memory of Professor R. P. Winnington-Ingram, formerly Director of the Institute and Professor of Greek at King's College London, to raise £250,000 to secure the annual Library Traineeship in perpetuity. This post helps to keep the Library open six days a week, including Saturdays and evenings, thus catering particularly for readers outside London and its university.

The Fund has already attracted donations of over £210,000. If you would like to help the Fund to reach its final target, please send your contribution to the Librarian, Institute of Classical Studies, Senate House, Malet Street, London WC1E 7HU.

ROMAN SOCIETY PUBLICATIONS

PERIODICALS BACK NUMBERS

Journal of Roman Studies ISSN 0075-4358

58-70, 72-8 (1968-80, 1982-8):

£15/US\$30/€30 - individuals, £16/US\$32/€32 - institutions, £21/US\$42/€42 - booksellers

79 (1989):

£17/US\$34/€34 - individuals, £18/US\$36/€36 - institutions, £25/US\$50/€50 - booksellers

81-2 (1991-2):

£20/US\$40/€40 - individuals, £25/US\$50/€50 - institutions, £30/US\$60/€60 - booksellers

85-6, 88 (1995-6, 1998):

£25/US\$50/€50 - individuals, £30/US\$60/€60 - institutions, £36/US\$72/€72 - booksellers

Indexes to vols 21-40 & 41-60 (1931-50 & 1951-70):
£5/US\$10/€10 each

Britannia ISSN 0068-113X

2-8 (1971-7):

£7.50/US\$15/€15 - individuals, £8/US\$16/€16 - institutions, £10/US\$20/€20 - booksellers

11-14 (1980-3):

£12/US\$24/€24 - individuals, £13/US\$26/€26 - institutions, £18/US\$36/€36 - booksellers

15-19 (1984-8):

£15/US\$30/€30 - individuals, £16/US\$32/€32 - institutions, £21/US\$42/€42 - booksellers

21 (1990):

£17/US\$34/€34 - individuals, £18/US\$36/€36 - institutions, £25/US\$50/€50 - booksellers

22-4 (1991-3):

£20/US\$40/€40 - individuals, £25/US\$50/€50 - institutions, £30/US\$60/€60 - booksellers

25-9 (1994-8):

£25/US\$50/€50 - individuals, £30/US\$60/€60 - institutions, £36/US\$72/€72 - booksellers

All prices per vol.

Index to Britannia I-XXV (1970-94)

1995, 226 pp. ISBN 0 907764 19 3 £20/US\$40/€40

OFFPRINTS

Journal of Roman Studies

67 (1977) *Air Reconnaissance in Roman Britain, 1973-76*

J.K.S. St Joseph £1.50/US\$3/€3

69 (1979) *Elegiacs by Gallus from Qasr Ibrim*

R.D. Anderson, P.J. Parsons & R.G.M.

Nisbet £3/US\$6/€6

76 (1986) *The Lex Irnitana: A New Copy of the Flavian Municipal Law (97 pp., 19 pls)*

Julián González £8/US\$16/€16

Britannia

9 (1978) *Production and Distribution of Tiles in Roman Britain with particular reference to the Cirencester region*

A. McWhirr & D. Viner £1/US\$2/€2

10 (1979) *Roman Timber Military Gateways in Britain and on the German Frontier*

W.H. Manning & I.R. Scott £2/US\$4/€4

Survey of Tile from the Roman Bath House at Beauport Park, E. Sussex

Gerald Brodrigg £1/US\$2/€2

12 (1981) *The Excavation of a Romano-British Farmstead and Cemetery on Bradley Hill, Somerton, Somerset*

Roger Leech £1/US\$2/€2

20 (1989) *The Numeri of the Roman Imperial Army*

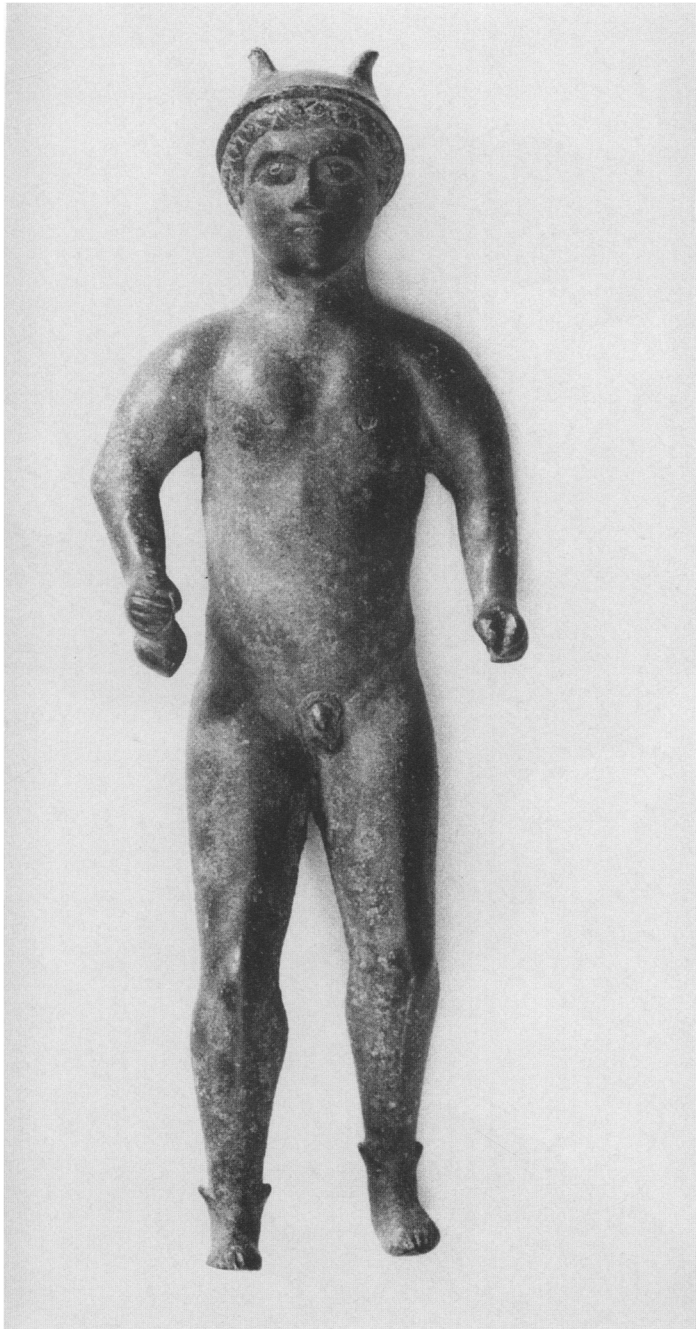
P. Southern £4.50/US\$9/€9

Roman Britain in 1990 and for every year up to 1998
per copy £5/US\$10/€10

**For details of ordering
see inside back cover**

PLATE
SECTION

PLATE I



(Photo: J. Bagnall Smith)

Great Walsingham: figure of Mercury, Cat. No. 1 (1:1). (p. 24)

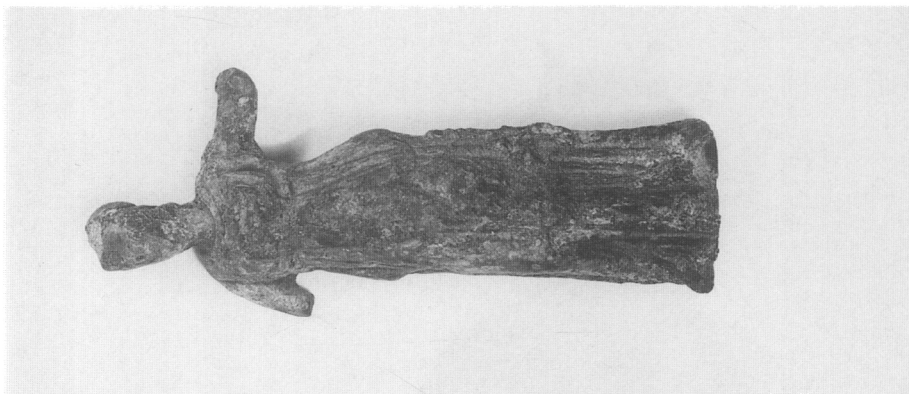
PLATE II



A



B



C

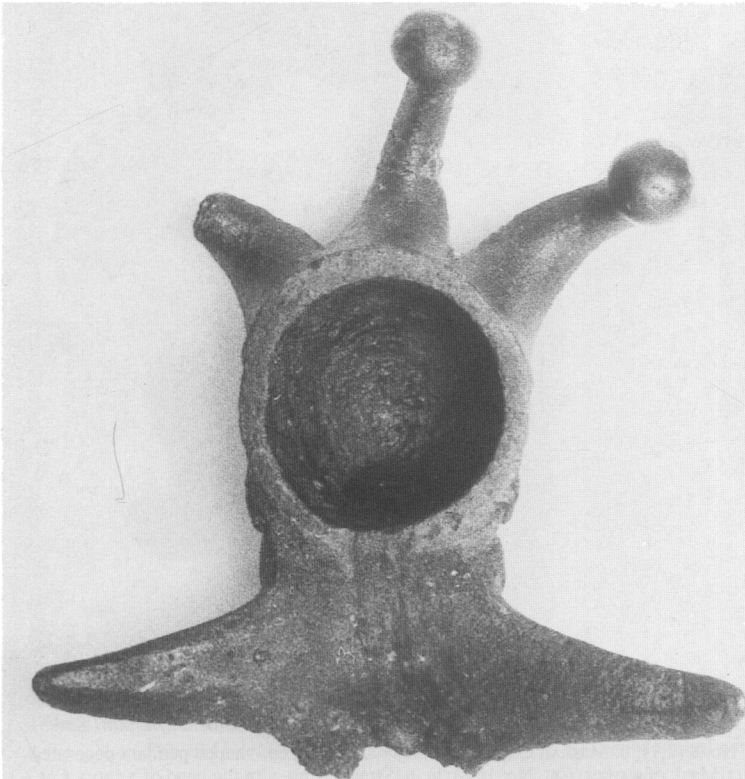
(Photos: J. Bagnall Smith)
Great Walsingham: A. Figure of Mercury, Cat. No. 2 (1:1); B. Figure of Mercury, Cat. No. 3 (1:1); C. Figure of Minerva, Cat. No. 4 (1:1). (pp. 24-6)



A



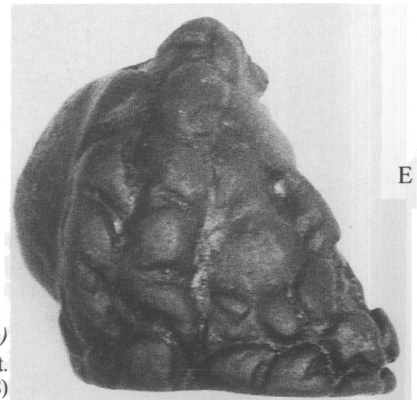
C



B



D



E

(Photos: A. R. Wilkins; B–E. J. Bagnall Smith)

Great Walsingham: A–B. Bust of three-horned deity, Cat. No. 6 (2:1); C. Bust of Minerva, Cat. No. 5 (2:1); D–E. Appliqué in the form of the head of Jupiter, Cat. No. 7 (2:1). (pp. 26–8)

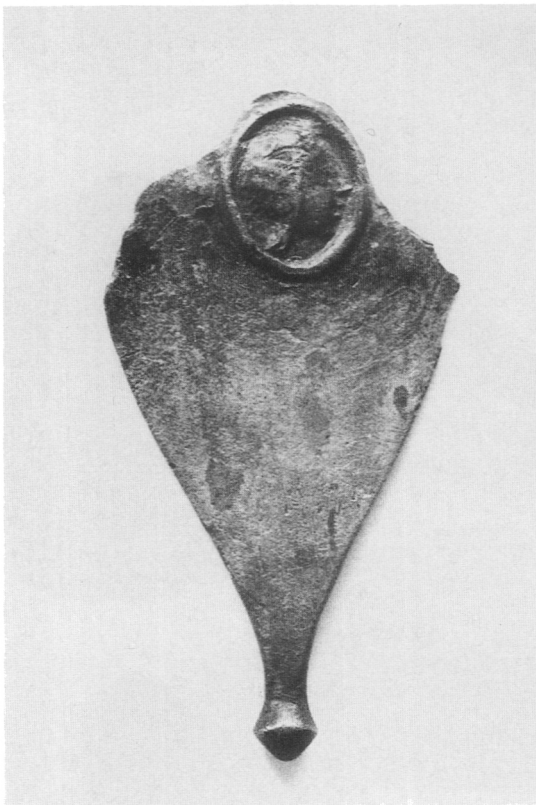
PLATE IV



A



B



C



D



E

(Photos: J. Bagnall Smith)

Great Walsingham: A. Mask of Cupid, Cat. No. 8 (2:1); B. Mask of Cupid, Cat. No. 9 (2:1); C. Leaf-shaped pendant decorated with the head of a satyr, Cat. No. 11 (2:1); D. Mask of a satyr, Cat. No. 10 (2:1); E. Strap-fitting with the head of a satyr, Cat. No. 12 (2:1). (pp. 29–30)

PLATE V



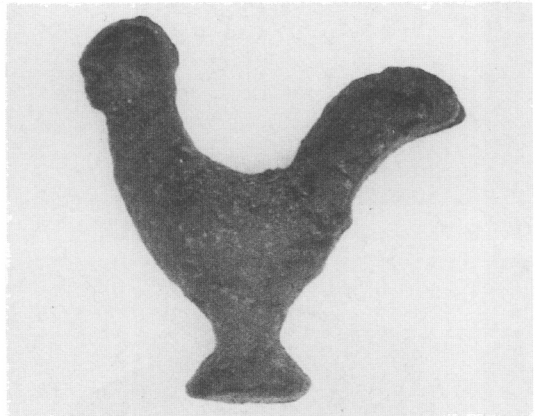
A



B



C



D



E

(Photos: J. Bagnall Smith)

Great Walsingham: A. Model of a goat, Cat. No. 13 (1:1); B. Model of a goat, Cat. No. 14 (2:1); C. Model of a cock, Cat. No. 15 (1:1); D. Model of a cock, Cat. No. 16 (2:1); E. Model of a cock, Cat. No. 17 (2:1). (p. 31)

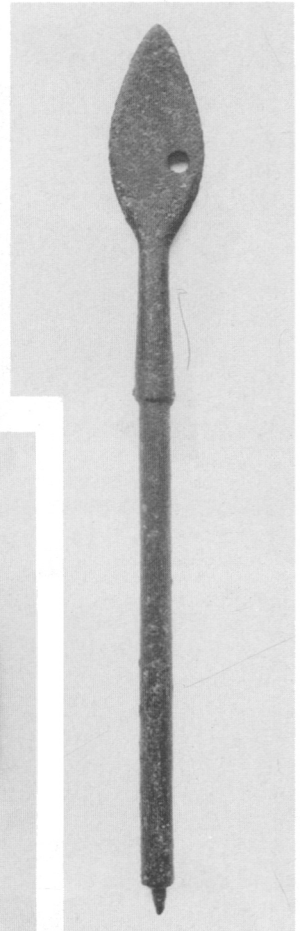
PLATE VI



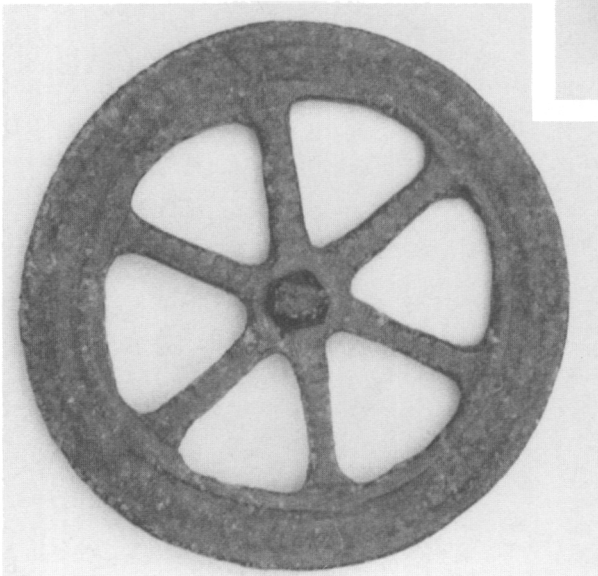
A



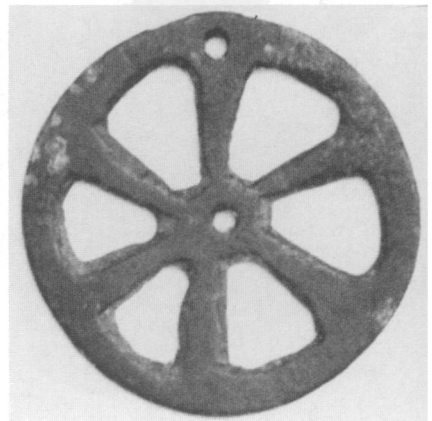
B



C



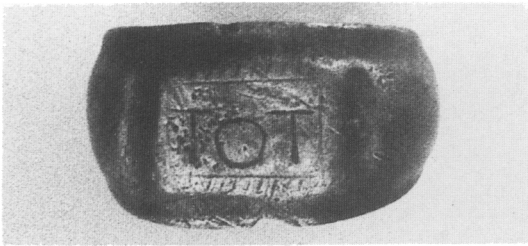
D



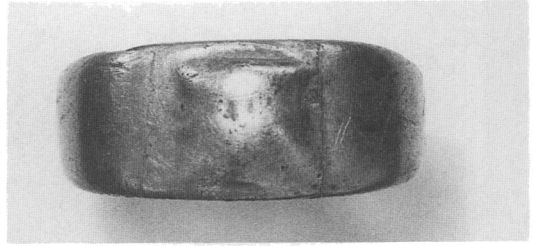
E

(Photos: J. Bagnall Smith)
Great Walsingham: A. Letter 'V', Cat. No. 21 (2:1); B. Model mattock, Cat. No. 24 (1:1); C. Small spear, possibly a model, Cat. No. 25 (1:1); D. Model wheel with six plain straight spokes, Cat. No. 22 (2:1); E. Model wheel with six plain tapering spokes, Cat. No. 23 (2:1). (pp. 32-4)

PLATE VII



A



B



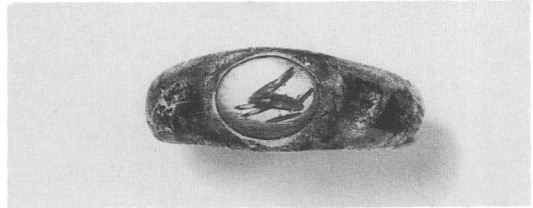
C



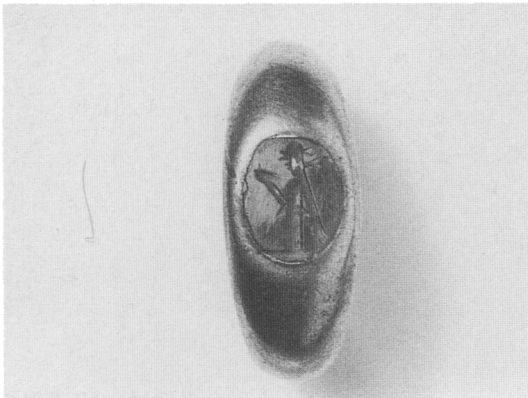
D



E



F



G

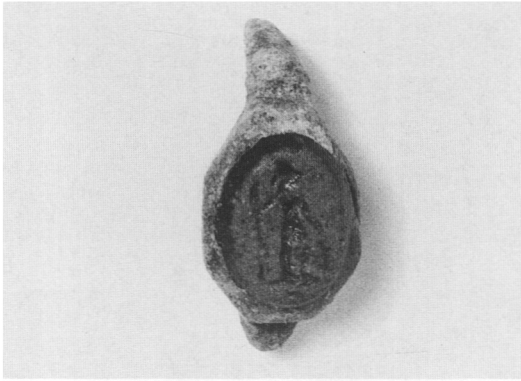


H

(Photos: A. D. Wicks; B–H. J. Bagnall Smith)

Great Walsingham: A. Ring inscribed 'TOT', Cat. No. 19 (2:1); B. Ring with sacred double-axe motif, Cat. No. 28 (2:1); C. Ring with setting depicting Mercury, Cat. No. 29 (2:1); D. Ring with setting depicting Mercury, Cat. No. 30 (2:1); E. Ring with Leda and the swan in intaglio, Cat. No. 32 (2:1); F. Gem-ring with mouse in intaglio, Cat. No. 37 (2:1); G. Gem-ring with Ceres in intaglio, Cat. No. 33 (2:1); H. Gem-ring with Neptune in intaglio, Cat. No. 34 (2:1). (pp. 32, 35–7)

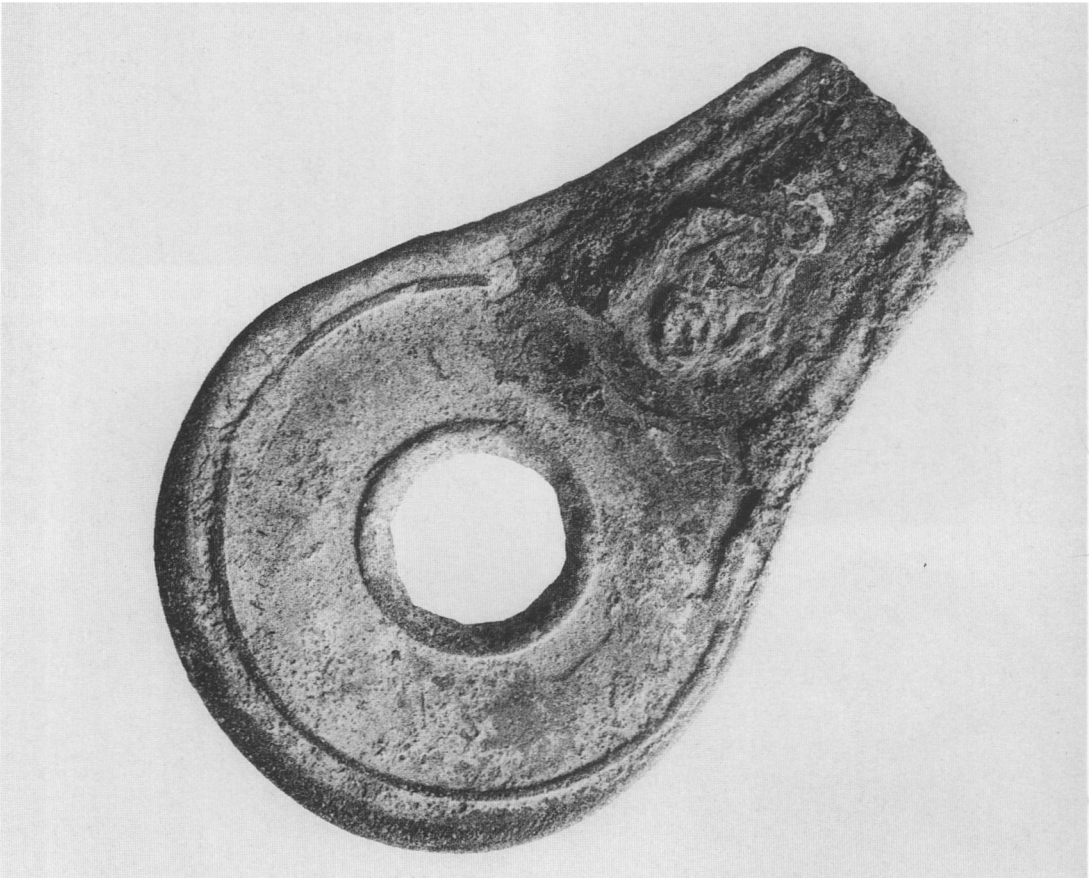
PLATE VIII



A



B



C

(Photos: A–B. J. Bagnall Smith; C. D. Wicks)

Great Walsingham: A. Fragment of gem-ring with Mars in intaglio, Cat. No. 35 (2:1); B. Gold setting from ring with Mars in intaglio, Cat. No. 36 (2:1); C. *Trulla* handle, Cat. No. 43 (2:1). (pp. 37, 39)

PLATE IX



A



B

(Photos: J. Bagnall Smith)

Great Walsingham. Lead coin-mould, Cat. No. 44 (2:1). (p. 39)

PLATE X



(Photo: A. Colchester)

A. The Colchester 'Child's Grave': the comic figurines. (p. 61)



(Photo: A. Colchester)

B. The Colchester 'Child's Grave': the triple-horned bull and the animal vessels. (p. 66)

PLATE XI



(Photo: A. Colchester)

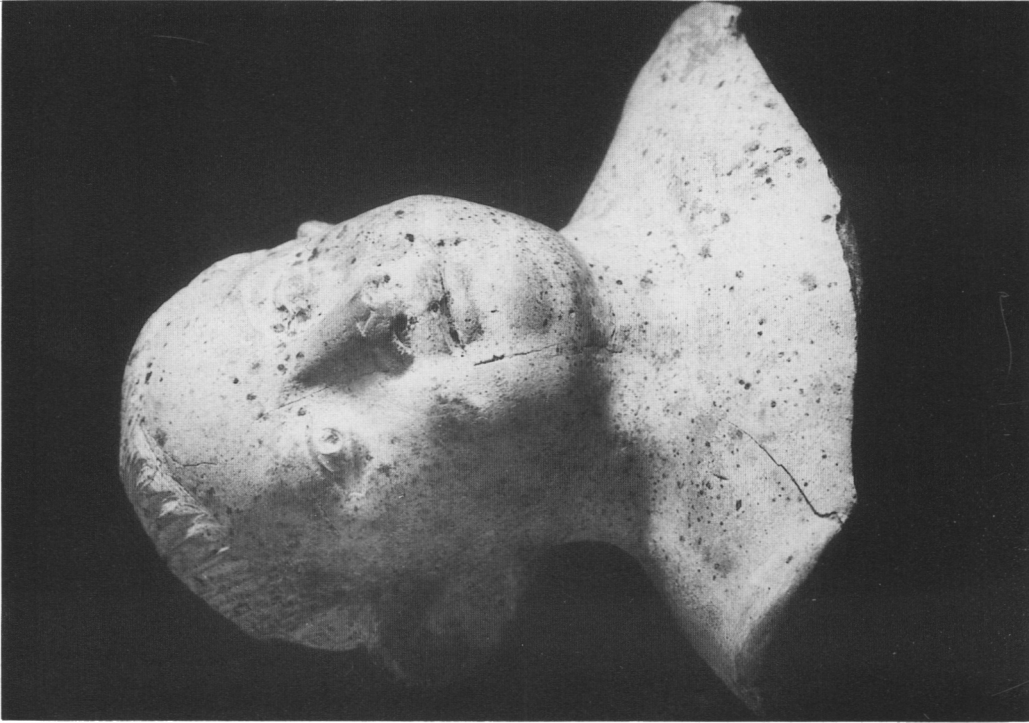
A. The Colchester 'Child's Grave': the five seated comic figurines (from left to right: 2/1131, 3/1128, 5/1130, 6/1132, 4/1129). (p. 62)



(Photo: A. Colchester)

B. The Colchester 'Child's Grave': the four reclining comic figures (from left to right: 8/1135, 9/1133, 10/1136, 7/1134). (p. 64)

PLATE XII

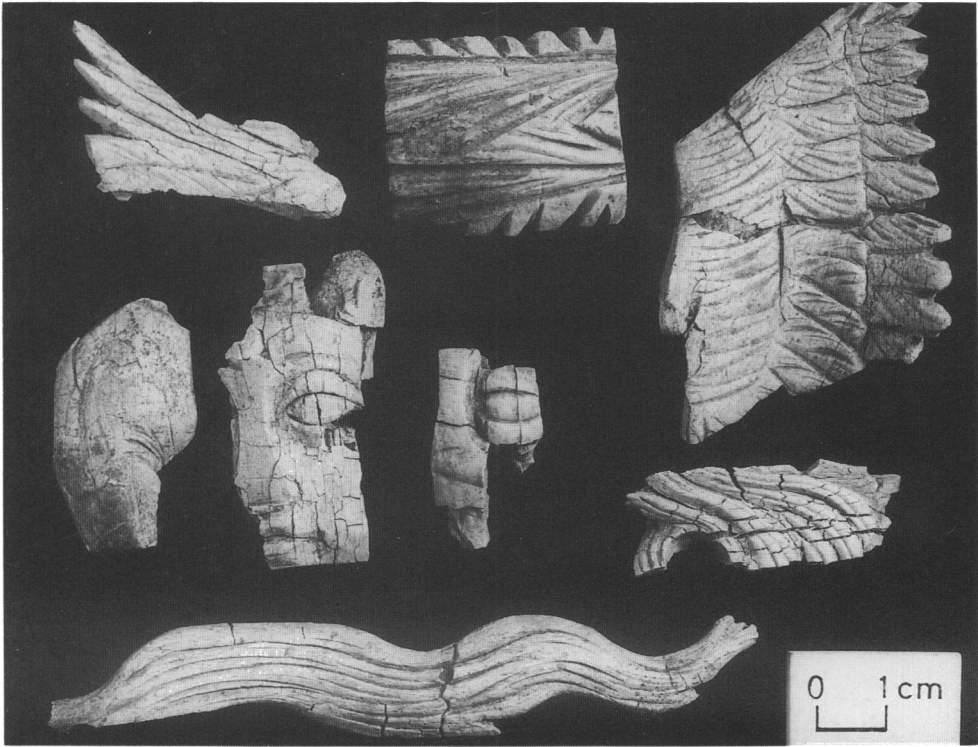


(Photo: A. Colchester)
B. The Colchester 'Child's Grave': the child's bust (12/1138). (p. 65)

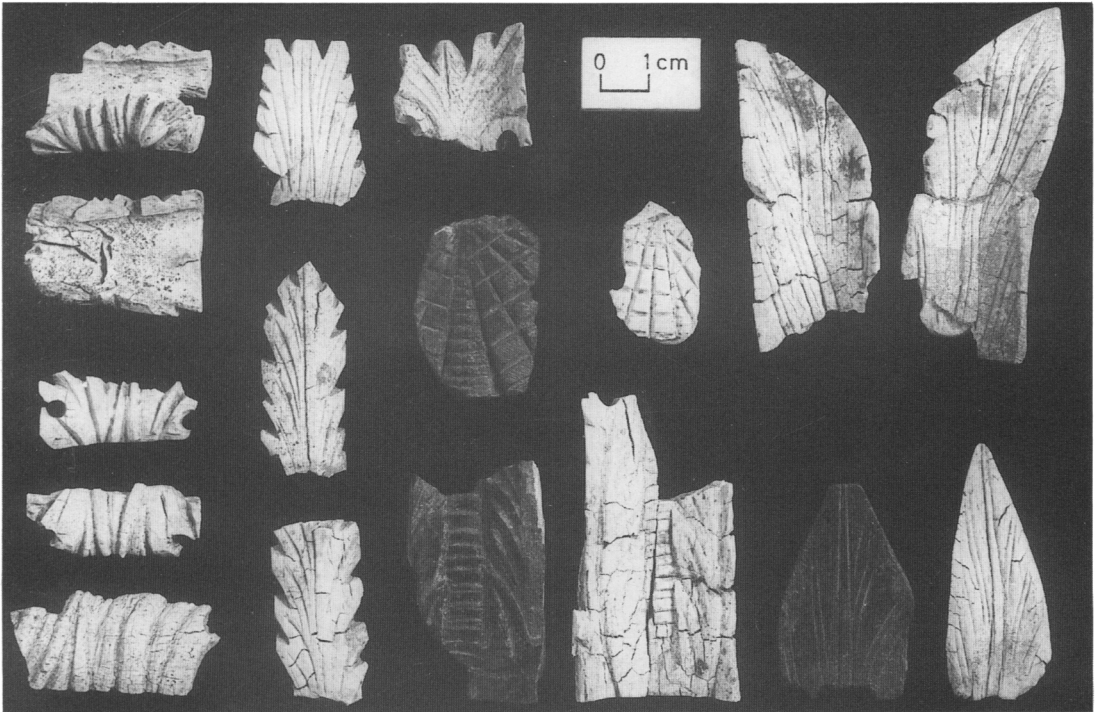


(Photo: A. Colchester)
A. The Colchester 'Child's Grave': the standing comic figurine (1/1127)
and the Hercules figurine (11/1126). (pp. 62, 65)

PLATE XIII



A

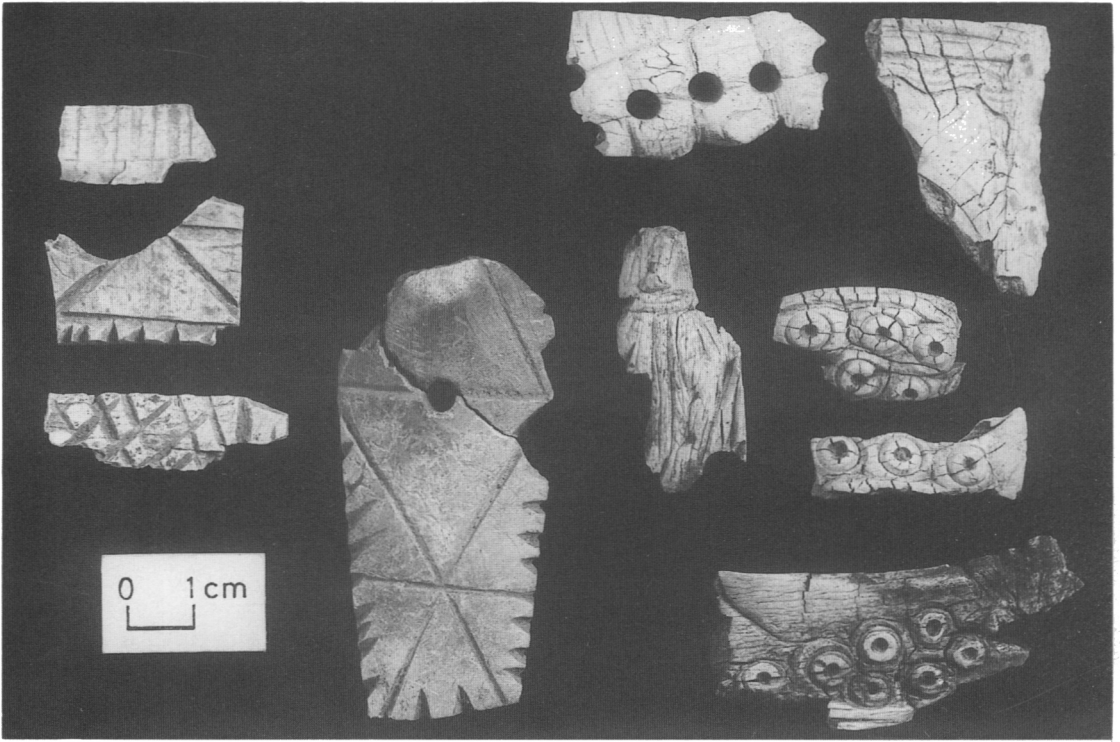


B

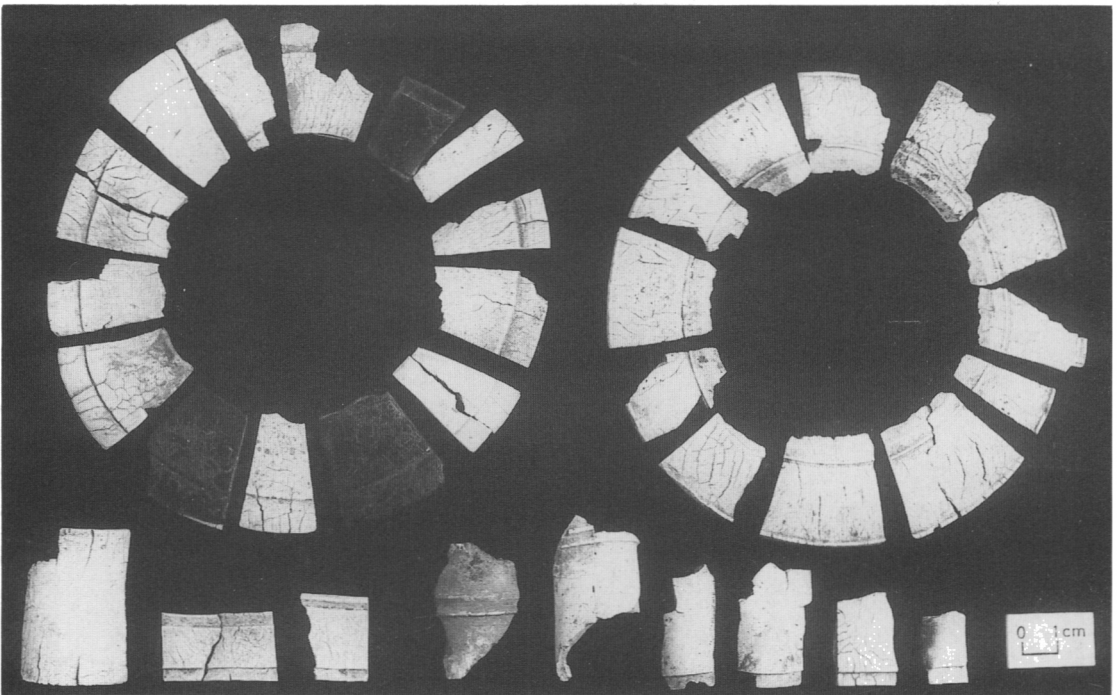
(Photos: A. Colchester)

A & B. The Colchester 'Child's Grave': selected bone fragments from the funerary couch (see Appendix 1, pp. 71, 81ff).

PLATE XIV



A



B

A & B. The Colchester 'Child's Grave': selected bone fragments from the funerary couch (see Appendix 1, pp. 77, 81ff). (Photos: A. Colchester)

PLATE XV



(Photo: Peter R. Scott)
Air-photograph of Piercebridge in July 1972 viewed from the west. The vicus in Tofts Field is clearly visible as cropmarks. The modern village lies on the site of the later Roman fort, the latrine-block in the north-east corner which is a guardianship site is visible. The stone bridge had just been discovered in the quarry in the top right of the photograph. (p. 112)

PLATE XVI



A. Piercebridge: the back of the bridge abutment and pavement viewed from the south shortly after discovery. The robber-trench for Pier 1 is clearly visible in the pavement while to the right of it is part of the later causeway, retained during excavation as a baulk. (p. 118)



B. Piercebridge: the bridge under excavation showing the later causeway and its surface of limestone slabs. (p. 124)

PLATE XVII



A. Piercebridge: the bridge abutment fully exposed. Scale 1 m. Note the depth of the underlying gravel deposits to the north. (p. 119)



B. Piercebridge: detail of the base of Pier 4. On the right-hand side can be seen the right-angled return of the downwater end of the pier. The whole base is held laterally by iron clamps set in lead. On the face of the stone in the foreground are lewis- and dowel-holes. Scales 0.1 m and 1 m. (p. 121)

PLATE XVIII



A. Piercebridge: tumbled masonry at Pier 3. In the foreground is a stone with a clamp-socket, beyond is the cutwater from the upstream face with a lewis-hole in its upper surface. (p. 122)



(Photo: J. Gould)

B. *Letocetum*: face of western wall below ploughsoil. (p. 186)

PLATE XIX



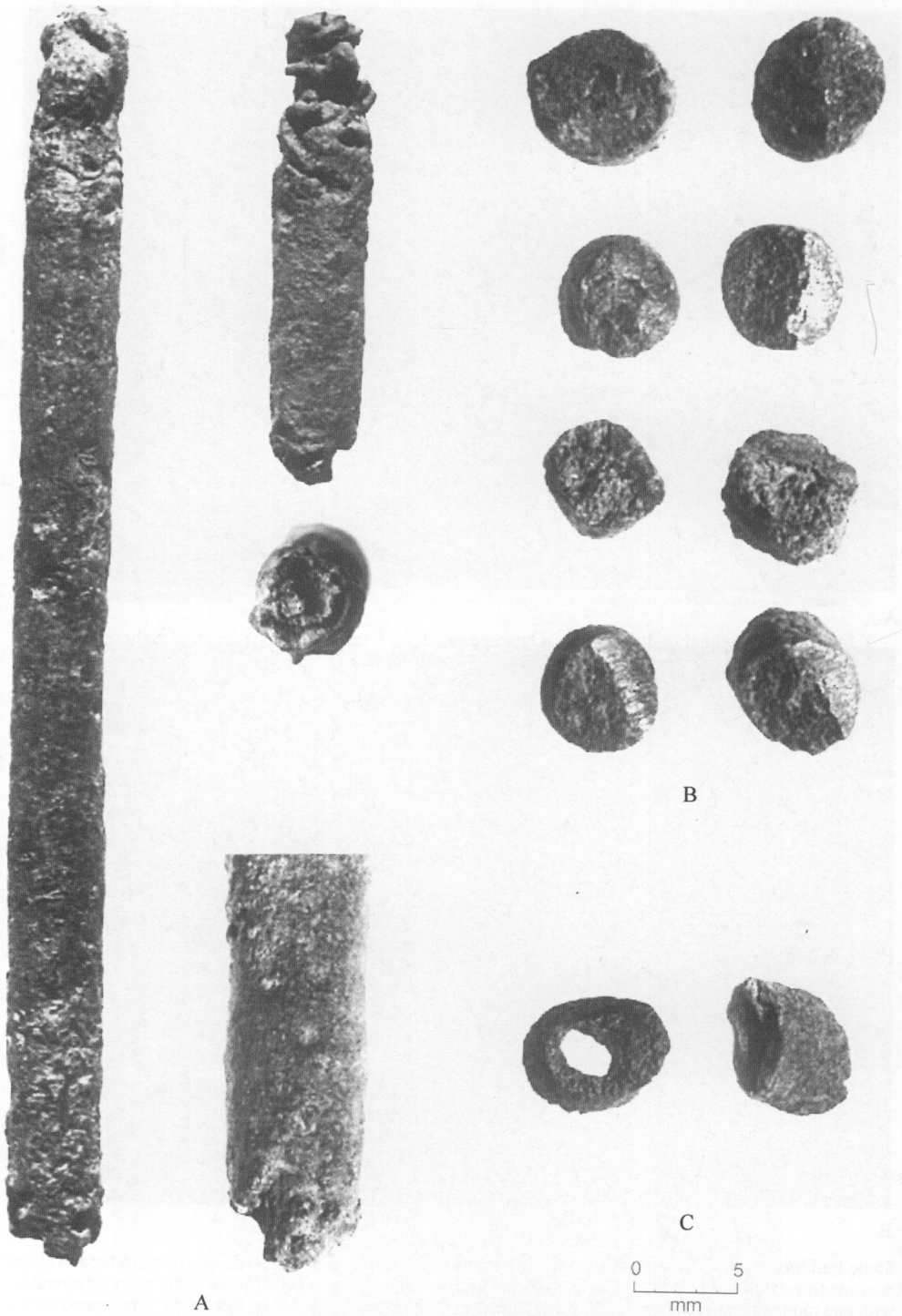
A



B

Stone building-blocks (darker tone), probably robbed from the fort at Brancaster, surviving in medieval and post-medieval buildings. Most blocks are fully dressed, but note the presence of some either rounded overall or with one rounded end. A. Part of south wall of chancel of the church at St Mary, Brancaster. Hammer 270 mm long. B. Part of east wall of building (?eighteenth-century malting-house) at the Maltings Hotel, Brancaster Staithe, seen from the Coastal Path. Scale given by bricks surrounding slit window. (p. 166)

PLATE XX

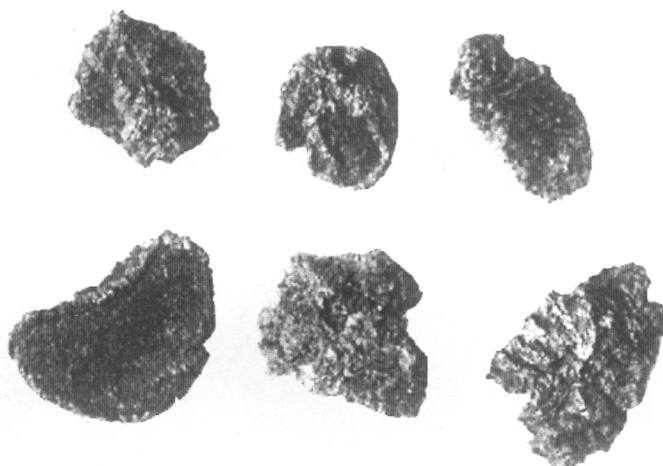


North Leigh, coin-counterfeiter's hoard. A. The rods with details showing evidence for construction; B. Pellets showing cut-marks; C. Off-cuts showing weak centres. (p. 217)

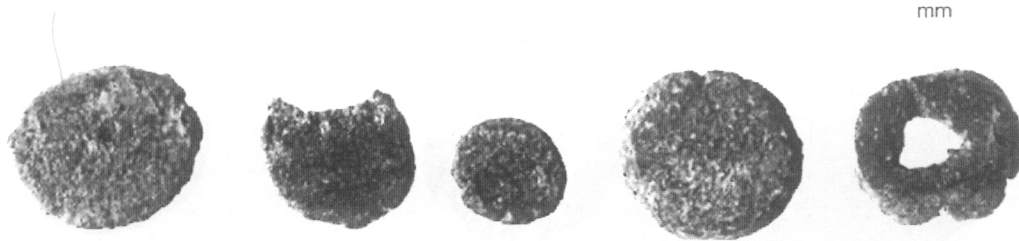
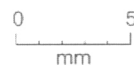
PLATE XXI



A



B



C

North Leigh, coin-counterfeiter's hoard. A. Selection of pellets, including examples with weak centres; B. Mis-shapen and mis-struck discs. C. Discs, one showing weak centre. (p. 217)

PLATE XXII



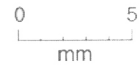
A



B



C



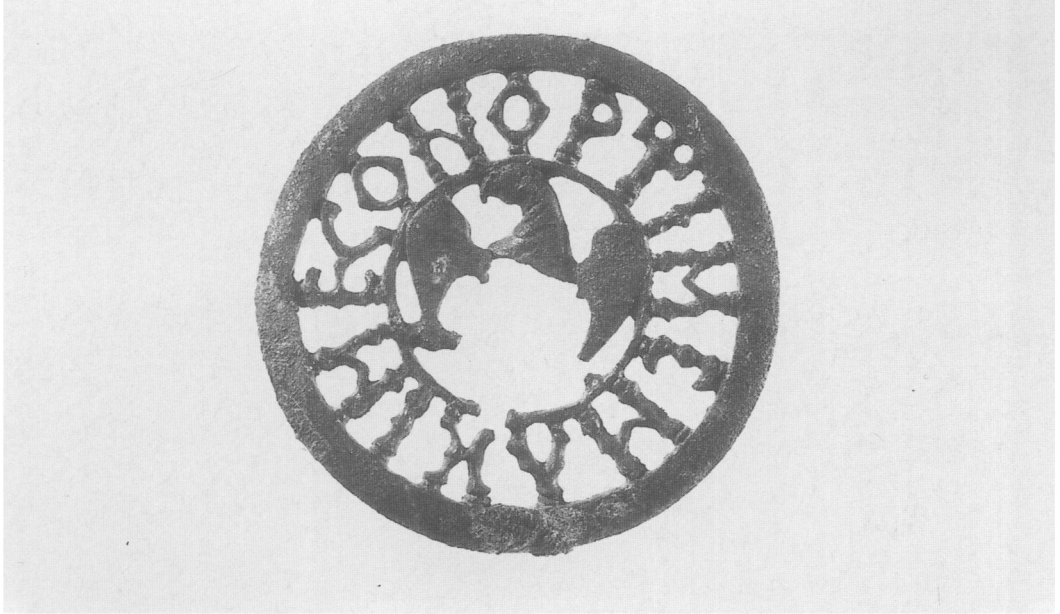
D



E

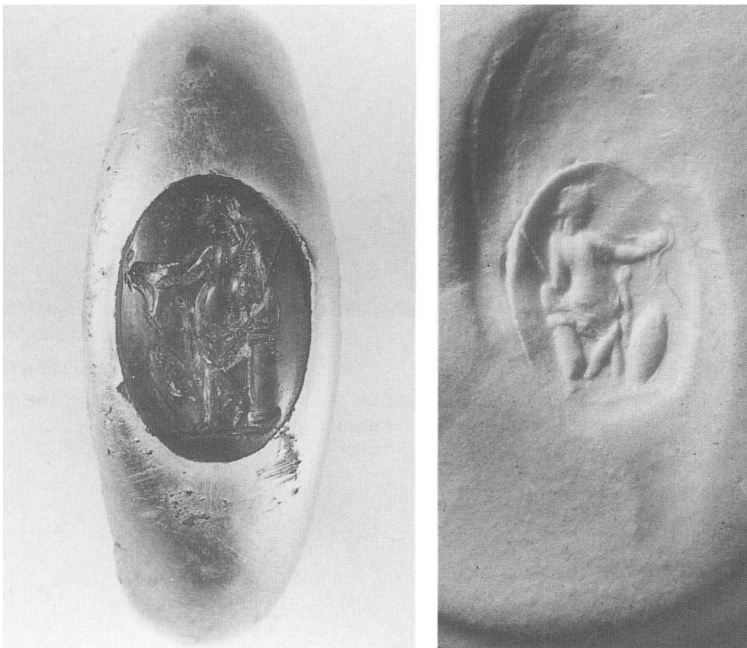
North Leigh, coin-counterfeiter's hoard. A. Examples of obverse Type 1; B. Examples of obverse Type 2; C. Examples of obverse Type 3; D. Examples of reverse Type A; E. Examples of reverse Type B. (p. 217)

PLATE XXIII



(Photo: British Museum)

A. A bronze eagle mount from Nineveh (1:1). (p. 286)



B. A Roman gold signet-ring from Curdworth, Warwicks. (p. 316)

PLATE XXIV



(Photo: RCHME, © Crown copyright. 15134/53)

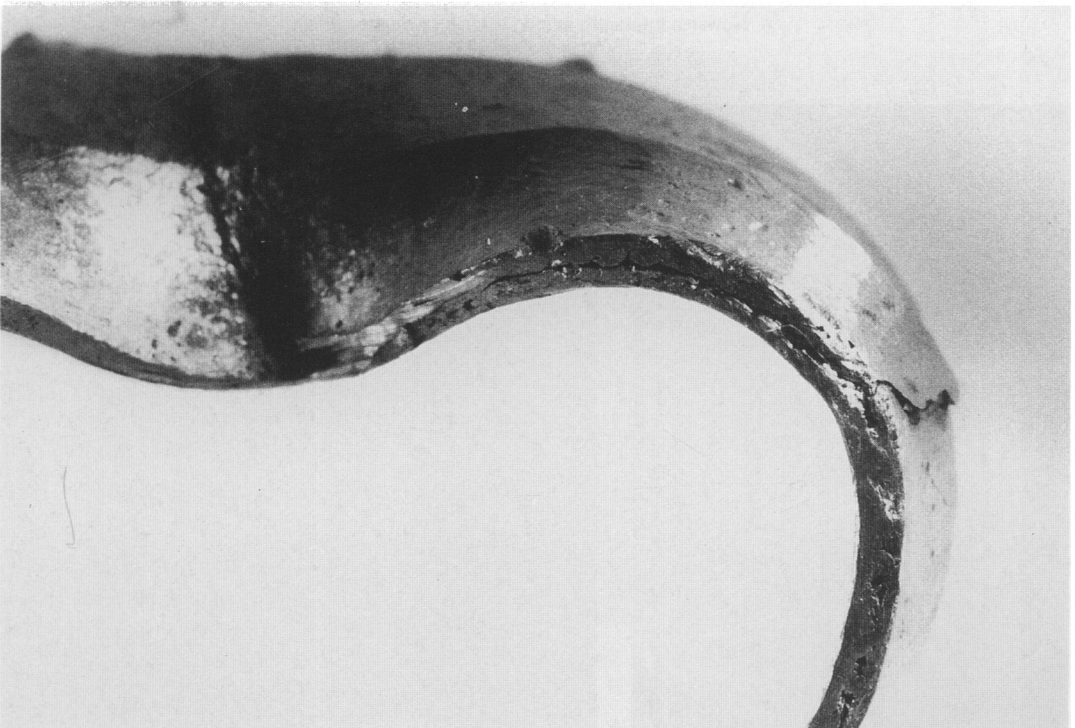
Alchester: aerial view (1994) of the training-ground and the camp looking north-westwards. The modern road in the foreground is Langford Lane. (p. 291)

PLATE XXV



(Photo: Walter Gardiner photography, Worthing)

A. The Patching hoard: the twenty-three gold solidi and the two gold rings. (p. 301)



(Photo: Dept. Scientific Research, British Museum)

B. The Patching hoard: detail of the larger gold ring showing the scarf joint in the gold. (p. 301)

PLATE XXVI



(Photo: Mr J. Cruickshank, Trimontium Trust)

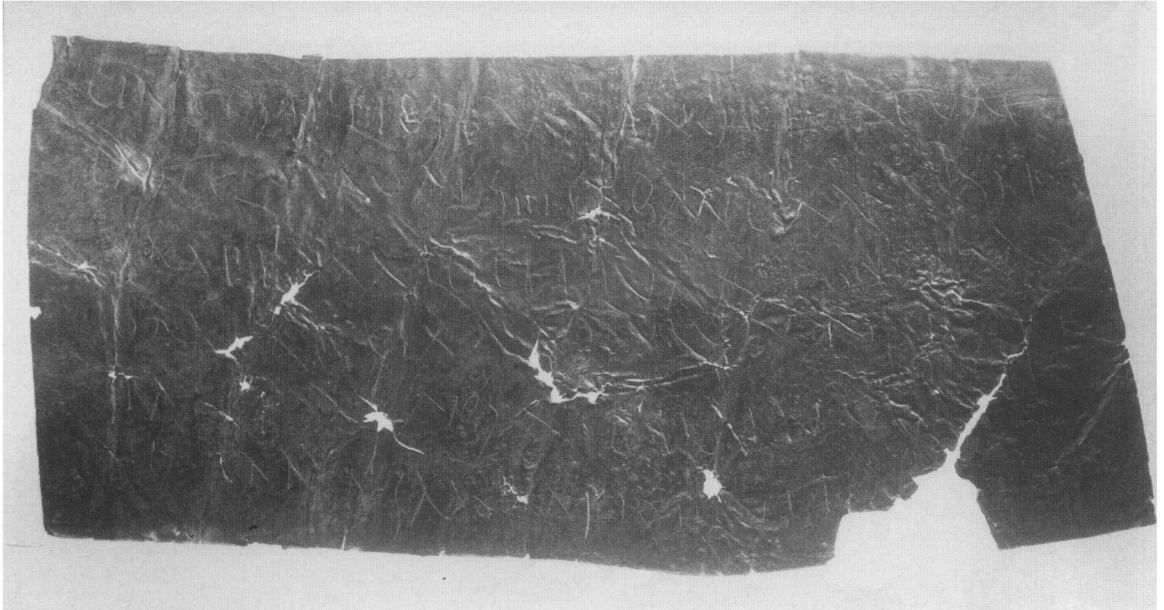
A. Newstead: intaglio in red jasper, showing the young Caracalla. (p. 332)



(Photo: Mr J. Cruickshank, Trimontium Trust)

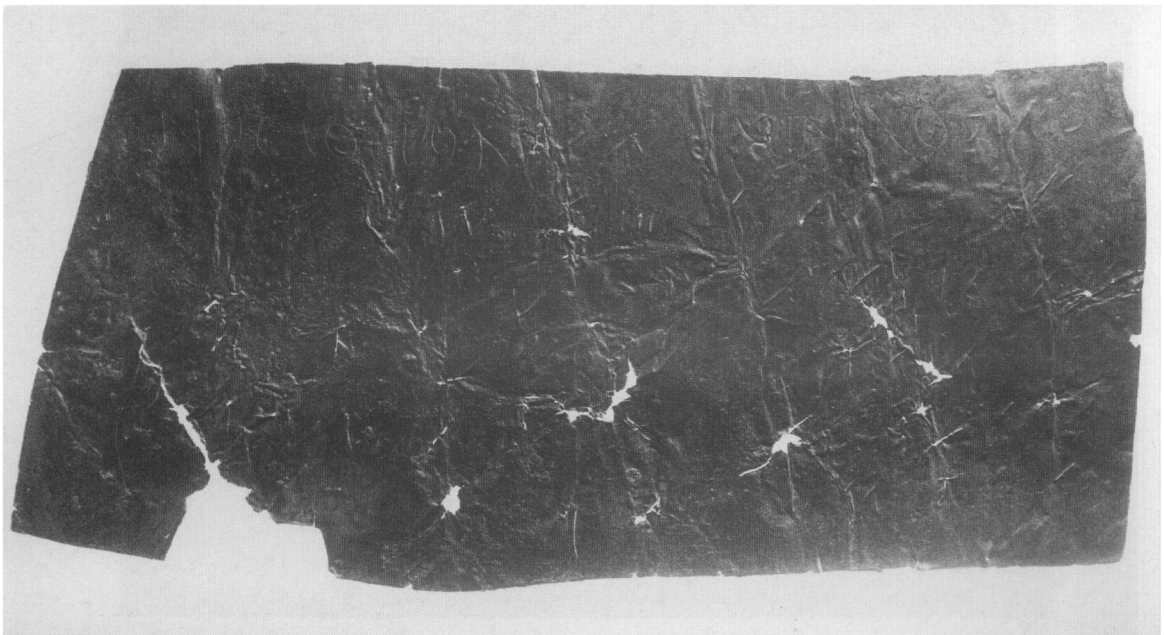
B. Newstead: double coin mould. (p. 332)

PLATE XXVII



(Photo: Institute of Archaeology, Oxford)

A. London: inscribed pewter tablet (p. 375, No. 1), obverse. Width of tablet 150–63 mm.



(Photo: Institute of Archaeology, Oxford)

B. London: inscribed pewter tablet (p. 375, No. 1), reverse. Width of tablet 150–63 mm.

PLATE XXVIII



(Photo: Arbeia Roman Fort and Museum)

Wallsend. Fragment of a sandstone building inscription (p. 380, No. 5). Width 0.20 m.

PLATE XXIX



(Photo: *Museum of Antiquities, Newcastle upon Tyne*)
High Rochester. Fragment of a tombstone (p. 381, No. 6). Width 0.235 m.

PLATE XXX



(Photo: National Museums of Scotland, Edinburgh)

A. Castledykes. Copper-alloy die with integral tang (p. 383, No. 22). Width of face 18 mm.



(Photo: National Museums of Scotland, Edinburgh)

B. Castledykes. Face of copper-alloy die (p. 383, No. 22). Width of face 18 mm.

BRITANNIA MONOGRAPHS ISSN 0953-542X

Skeleton Green: A Late Iron Age and Romano-British

Site No. 2

Clive Partridge

1981, 359 pp., 15 pls, paperback ISBN 0 907764 00 2 £6/US\$12/€12

Silchester: Excavations on the Defences 1974-80 No. 5

Michael Fulford

1984, 301 pp., 91 figs, paperback ISBN 0 907764 03 7 £9/US\$18/€18

Baldock: The Excavation of a Roman and Pre-Roman Settlement, 1968-72 No. 7

I.M. Stead and Valery Rigby

1986, 435 pp., 160 figs, paperback ISBN 0 907764 16 9 £10/US\$20/€20

Longthorpe II: The Military Works Depot: an Episode in Landscape History No. 8

G.B. Dannell and J.P. Wild

1987, 206 pp., 75 illus., paperback ISBN 0 907764 08 8 £8/US\$16/€16

Strageath: Excavations within the Roman Fort, 1973-86 No. 9

S.S. Frere and J.J. Wilkes

1989, 360 pp., 134 figs, 40 pls, paperback ISBN 0 907764 11 8 £10/US\$20/€20

The Silchester Amphitheatre: Excavations of 1979-85 No. 10

Michael Fulford

1989, 248 pp., 84 figs, 40 pls, paperback ISBN 0 907664 12 6 £10/US\$20/€20

Leucarum: Excavations at the Roman Auxiliary Fort at Loughor, W. Glamorgan, 1982-4 & 1987-8 No. 12

A.G. Marvell & H.S. Owen-John

1997, 448 pp. incl. 155 figs, 26 pls, paperback ISBN 0 907664 21 5 £45/US\$90/€90

Roman Inscribed and Sculptured Stones in the Hunterian Museum, University of Glasgow No. 13

Lawrence Keppie

1998, 156 pp. incl. 100 line drawings, 24 pls, paperback ISBN 0 907764 22 3 £36/US\$72/€72

The Excavation of a Ceremonial Site at Folly Lane, Verulamium No. 14

Rosalind Niblett

1999, 456 pp. incl. 121 figs and 62 pls, paperback ISBN 0 907764 23 1 £45/US\$90/€90

JOURNAL OF ROMAN STUDIES MONOGRAPHS ISSN 0951-6549

Aphrodisias and Rome No. 1

Joyce Reynolds

1982, 214 pp., 32 pls, hardback ISBN 0 907764 00 2 £15/US\$30/€30

Excavations at Sabratha 1948-1951 No. 2

Philip M. Kerrick

1986, 326 pp., 64 pls, hardback ISBN 0 907764 07 X £15/US\$30/€30

Monumenta Asiae Minoris Antiqua (MAMA) IX: Monuments from the Aezanitis No. 4

Ed. B. Levick, S. Mitchell, et al.

1988, 209 pp., 48 pls, 2 maps, hardback ISBN 0 907764 10 X £15/US\$30/€30

Performers and Partisans at Aphrodisias No. 6

Charlotte Roueché

1993, 285 pp., 24 pls, hardback ISBN 0 907764 17 7 £34/US\$68/€68

Monumenta Asiae Minoris Antiqua (MAMA) X No. 7

Ed. B. Levick and S. Mitchell

1993, 248 pp., 56 pls, hardback ISBN 0 907764 18 5 £40/US\$80/€80

MAMA IX and MAMA X Nos 4 and 7 together £45/\$90/€90

Nicopolis ad Istrum: a Roman, Late Roman & Early Byzantine City: Excavations 1985-92. Vol.1 No. 8

Andrew Poulter

1995, 338 pp. incl. 118 line drawings, 46 pls, 3 fold-outs, hardback ISBN 0 907764 20 7 £42/US\$84/€84

Britannia monos 1, 3, 4, 6 and 11, and JRS monos 3 and 5 are out of print

The prices above apply only to orders made direct to:

The Roman Society, Senate House, Malet Street, London WC1E 7HU

Prices include postage & packing (overseas by surface mail). Cash with order or pro-forma invoice

Cheques payable to the Roman Society—Giro bank code: 72-00-05; account no. 87434201



Published by the Society for the Promotion of Roman Studies
Senate House, Malet Street, London WC1E 7HU