

## FORUM

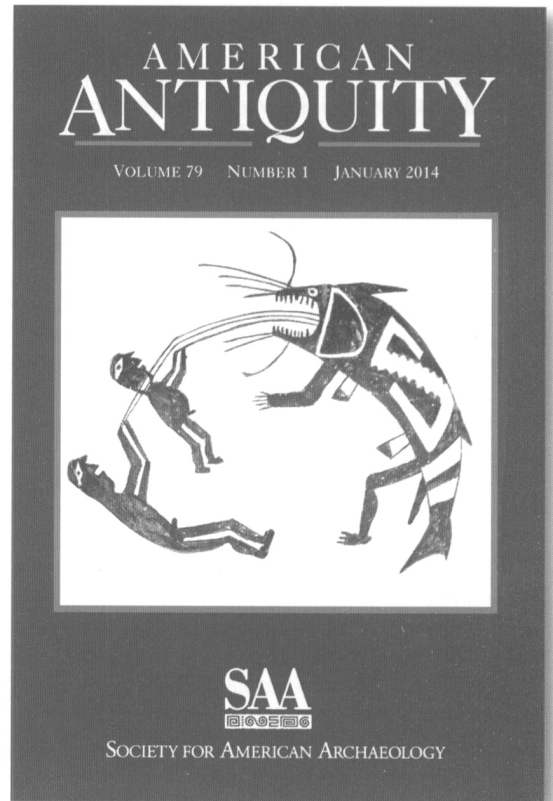
- 5 Grand Challenges for Archaeology  
*Keith W. Kintigh, Jeffrey H. Altschul, Mary C. Beaudry, Robert D. Drennan, Ann P. Kinzig, Timothy A. Kohler, W. Fredrick Limp, Herbert D. G. Maschner, William K. Michener, Timothy R. Paukett, Peter Peregrine, Jeremy A. Sabloff, Tony J. Wilkinson, Henry T. Wright, and Melinda A. Zeder*

## ARTICLES

- 25 Pre-Clovis Lithic Technology at the Debra L. Friedkin Site, Texas: Comparisons to Clovis through Site-Level Behavior, Technological Trait-List, and Cladistic Analyses  
*Thomas A. Jennings and Michael R. Waters*
- 45 Eye of the Needle: Cold Stress, Clothing, and Sewing Technology during the Younger Dryas Cold Event in North America  
*Alan J. Osborn*
- 69 Evaluating Cahokian Contact and Mississippian Identity Politics in the Late Prehistoric Central Illinois River Valley  
*Dana N. Bardolph*
- 90 Ritual Change and the Distant: Mesoamerican Iconography, Scarlet Macaws, and Great Kivas in the Mimbres Region of Southwestern New Mexico  
*Patricia A. Gilman, Marc Thompson, and Kristina C. Wyckoff*
- 108 Death and Disability in a Younge Phase Community  
*Michael W. Spence, Lana J. Williams, and Sandra M. Wheeler*
- 128 Copying Error and the Cultural Evolution of “Additive” vs. “Reductive” Material Traditions: An Experimental Assessment  
*Kerstin Schillinger, Alex Mesoudi, and Stephen J. Lycett*

## REPORTS

- 144 A Paleoenvironmental and Archaeological Model-Based Age Estimate for the Colonization of Hawai'i  
*J. Stephen Athens, Timothy M. Rieth, and Thomas S. Dye*
- 156 Concerning the Atlatl and the Bow: Further Observations Regarding Arrow and Dart Points in the Archaeological Record  
*Dale Walde*
- 162 Darts, Arrows, and Archaeologists: Distinguishing Dart and Arrow Points in the Archaeological Record  
*Jon M. Erlandson, Jack L. Watts, and Nicholas P. Jew*



## NOTICE TO AUTHORS

*Latin American Antiquity* publishes original papers on the archaeology, prehistory, and ethnohistory of Latin America, i.e., Mesoamerica, Central America, and South America, together with culturally affiliated adjacent regions. Papers may also treat more general theoretical and methodological issues with relevance to Latin America. Authors submit manuscripts to the editor for consideration as ARTICLES or REPORTS in English, Spanish, or Portuguese. The normal, expected length of an ARTICLE will be 10–15,000 words, including bibliographies and tables. REPORTS should be under 10,000 words. Tables and illustrations should be limited to those that are appropriate and necessary. Authors are required to submit manuscripts electronically through Editorial Manager® (<http://www.editorialmanager.com/laq>). Detailed information on policy, style, and technical matters of manuscript preparation is given in English and in Spanish in the “Editorial Policy, Information for Authors, and Style Guide for *American Antiquity* and *Latin American Antiquity*,” available through the World Wide Web at <http://www.saa.org/Publications/StyleGuide/styframe.html>. For additional information, updates, or clarification, consult the managing editor at the SAA office in Washington, DC.

## BOARD OF DIRECTORS OF THE SOCIETY FOR AMERICAN ARCHAEOLOGY

### *Officers*

*President:* JEFFREY H. ALTSCHUL, RPA, Statistical Research, Inc., PO Box 31865, 6099 E. Speedway Blvd., Tucson, AZ 85751-1865

*Secretary:* CHRISTINA B. RIETH, RPA, New York State Museum, Division of Research and Collections, Cultural Education Center 3122, Albany, New York 12230-0001

*Treasurer:* ALEX W. BARKER, Director, University of Missouri, Museum of Art & Archaeology, 1 Pickard Hall, Columbia, MO 65211-0001

*Treasurer-Elect:* JIM BRUSETH, Ph.D., RPA, Bullock Texas State History Museum, 6806 Rio Bravo Lane, Austin, TX 78737

### *Board Members at-Large*

S. TERRY CHILDS, RPA, Department of the Interior, Office of Acquisition & Property Management, DOI Museum Program, Washington, DC 20240-0001

SUZANNE K. FISH, University of Arizona, Arizona State Museum, Tucson, AZ 85721-0001

KELLEY A. HAYS-GILPIN, RPA, Northern Arizona University, 1750 W. Chelsea Way, Flagstaff, AZ 86001-9031

SARAH A. HERR, RPA, Desert Archaeology, Inc., 3975 N. Tucson Blvd, Tucson, AZ 85716-1037

RODRIGO LIENDO, Universidad Nacional Autónoma De México Instituto De Investigaciones Antropológicas, Ciudad Universitaria, MÉX 04510 Mexico

EDUARDO G. NEVES, Museu de Arqueologia e Etnologia, Av. Professor Almeida, Prado, 1466, Sao Paulo 05508-900, Brazil

### *Ex-Officio Board Member*

TOBI A. BRIMSEK, Executive Director, Society for American Archaeology, 1111 14th Street NW, Suite 800, Washington, DC 20005

## ARTICLES

- 3 Mobile Communities and Pastoralist Landscapes during the Formative Period in the Central Altiplano of Bolivia  
*José M. Capriles*

## REPORTS

- 27 Historical Archaeology at the Hacienda San Miguel Acocotla, Puebla, Mexico  
*Elizabeth Terese Newman*
- 46 Contextualizing the Glyphic Texts of Tipan Chen Uitz, Cayo District, Belize  
*Christopher R. Andres, Christophe Helmke, Shawn G. Morton, Gabriel D. Wrobel, and Jason J. González*

## THEMED REPORT SECTION ON MICROBOTANICAL AND MULTI-PROXY ANALYSIS

- 65 Multi-Proxy Analysis of Plant Use at Formative Period Los Naranjos, Honduras  
*Shanti Morell-Hart, Rosemary A. Joyce, and John S. Henderson*
- 82 Analysis of the Context and Contents of an Ulúa-Style Marble Vase from the Palmarejo Valley, Honduras  
*E. Christian Wells, Karla L. Davis-Salazar, José E. Moreno-Cortés, Glenn S. L. Stuart, and Anna C. Novotny*
- 101 Recent Archaeobotanical Findings of the Hallucinogenic Snuff Cojoba (*Anadenanthera Peregrina* (L.) Speg.) in Precolonial Puerto Rico  
*Jaime R. Pagán-Jiménez and Lisabeth A. Carlson*

## REVIEW

- 117 Policy and Ecology in Formative Period Coastal Oaxaca, edited by Arthur A. Joyce  
*Jeffrey P. Blomster*

*On the cover:* Artistic reconstruction of site KCH21 in Iroco. (Artwork by Alexandra Ramírez.) From "Mobile Communities and Pastoralist Landscapes during the Formative Period in the Central Altiplano of Bolivia," by José M. Capriles, page 20.

© The paper used in this publication meets the requirements of ANSI/NISO Z39.48-1992  
(Permanence of Paper).