

# PMLA

*Publications of the  
Modern Language Association  
of America*

September 1979

*Volume 94 Number 4*

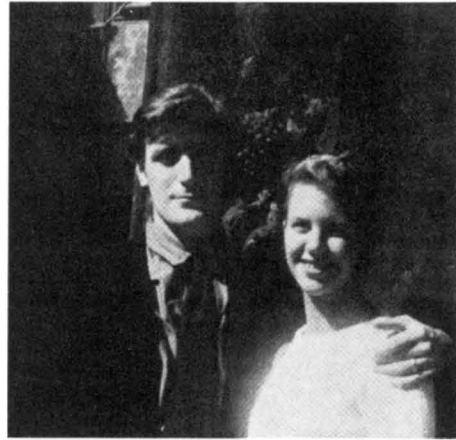
Directory

---

## SYLVIA PLATH AND TED HUGHES

**Margaret Dickie Uroff**

Uroff's examination of the careers of two of the twentieth century's most explosive talents explores the ways in which they helped and hindered each other and, by their mutual effort, revolutionized English and American poetry. ". . . an excellent study of both poets . . . a model of scholarship." — Linda Wagner, Michigan State University. ". . . the best to date on Plath and far and away the best on Hughes." — Richard A. Blessing, University of Washington.



\$11.95

---

## THE NOVELISTIC VISION OF DORIS LESSING

*Breaking the Forms of Consciousness*

**Roberta Rubenstein**



Extraordinary glimpses into British novelist Doris Lessing's personal view of her creative process are a part of this intriguing interdisciplinary approach to Lessing's eleven novels. This first such study in book form provides literary, psychological, and political interpretations of Lessing's writing and traces the evolution of her visionary focus through its various stages of artistic expression. ". . . a highly intelligent and thoughtful work. Rubenstein handles difficult ideas with great ease without treating them simplistically." — Sydney Janet Kaplan, University of Washington.

\$14.00



**UNIVERSITY OF ILLINOIS PRESS**

Box 5081, Station A, Champaign, IL 61820

September 1979 Directory

# PMIA

---

*Publications of the  
Modern Language Association of America*

Volume 94

Number 4

PUBLISHED SIX TIMES A YEAR BY THE ASSOCIATION

# The Modern Language Association of America

ORGANIZED 1883

INCORPORATED 1900

## OFFICERS FOR THE YEAR 1979

*President:* JEAN A. PERKINS, *Swarthmore College*  
*First Vice-President:* HELEN VENDLER, *Boston University*  
*Second Vice-President:* PETER DEMETZ, *Yale University*  
*Executive Director:* JOEL CONARROE  
*Deputy Executive Director:* HANS RÜTIMANN

## EXECUTIVE COUNCIL

For the term ending 31 December 1979	For the term ending 31 December 1980
DAVID J. DELAURA <i>University of Pennsylvania</i>	GEOFFREY H. HARTMAN <i>Yale University</i>
CAROLYN G. HEILBRUN <i>Columbia University</i>	WINFRED P. LEHMANN <i>University of Texas, Austin</i>
RONALD PAULSON <i>Yale University</i>	MARILYN L. WILLIAMSON <i>Wayne State University</i>
For the term ending 31 December 1981	For the term ending 31 December 1982
BARBARA BOWEN <i>University of Illinois, Urbana</i>	RUTH K. ANGRESS <i>University of California, Irvine</i>
JAMES LAWLER <i>Dalhousie University</i>	WALTER H. SOKEL <i>University of Virginia</i>
MARJORIE G. PERLOFF <i>University of Southern California</i>	RUTH H. WEBBER <i>University of Chicago</i>

## TRUSTEES OF INVESTED FUNDS

GORDON N. RAY <i>Guggenheim Foundation, Managing Trustee</i>	C. WALLER BARRETT <i>Charlottesville, Virginia</i>
ROBERT LUMIANSKY <i>American Council of Learned Societies</i>	

---

*PMLA* is issued six times a year, in January, March, May, September, October, and November, by the Modern Language Association of America, 62 Fifth Avenue, New York, New York 10011. Membership is open to those persons who are professionally interested in the modern languages and literatures. Annual dues, which include subscription to *PMLA*, are based on members' salaries and are graduated as follows: student members, \$10; unemployed regular members, \$10; regular members (first year), \$20; regular members (salary under \$12,000), \$25; regular members (salary \$12,000–\$15,000), \$30; regular members (salary \$15,000–\$20,000), \$35; regular members (salary \$20,000–\$25,000), \$40; regular members (salary \$25,000–\$30,000), \$45; regular members (salary \$30,000–\$35,000), \$50; regular members (salary over \$35,000), \$55; joint members (with only one subscription to *PMLA*), add \$10 to dues category of higher paid member; foreign members, same as regular members. Membership applications are available on request.

The subscription price of *PMLA* for libraries and other institutions is \$35. A subscription including a bound volume at the end of the year is \$55, domestic and foreign. Agents deduct 10% as their fee. Single copies of the January, March, May, and October issues may be obtained for \$5 each; the November (Program) issue for \$10; the September (Directory) issue for \$15.

Issues for the current year are available from the MLA Publications Center. Claims for undelivered issues will be honored if they are received within one year of the publication date; thereafter the single issue price will be charged.

For information about the availability of back issues, inquire of Kraus Reprint Co., Millwood, NY 10546; (914) 762-2200. Early and current volumes may be obtained on microfilm from University Microfilms, Ann Arbor, MI 48106. Purchase of current volumes on film is restricted to subscribers of the journal.

## OFFICE OF PUBLICATION AND EDITORIAL OFFICES

62 Fifth Avenue, New York, NY 10011 *Tel.:* 212 741-5588

All communications including notices of changes of address should be sent to the Membership Office of the Association at 62 Fifth Avenue, New York, NY 10011. If a change of address also involves a change of institutional affiliation, the Membership Office should be informed of this fact at the same time.

Second-class postage paid at New York, NY, and at additional mailing office.  
Copyright © 1979 by The Modern Language Association of America.  
Library of Congress Catalog Card Number 12-32040.

## Contents • September

The Eighty-Nine Presidents of the Modern Language Association . . . . .	552
Members of the Executive Council, 1970–79 . . . . .	552
MLA Delegate Assembly . . . . .	553
Committees and Commissions of the Modern Language Association . . . . .	555
MLA Headquarters Staff . . . . .	558
MLA Statistics . . . . .	559
Distribution of MLA Members . . . . .	561
MLA Divisions and Discussion Groups . . . . .	562
Procedures for Organizing Meetings for the MLA Convention and Policies for MLA Divisions and Discussion Groups . . . . .	564
Reports of the Regional Modern Language Associations . . . . .	576
Constitution of the Modern Language Association of America . . . . .	584
Proposed Amendments to the MLA Constitution . . . . .	589
Honorary Members of the Modern Language Association of America . . . . .	594
Honorary Fellows of the Modern Language Association of America . . . . .	595
List of Members . . . . .	596
Necrology . . . . .	727
English and Foreign Language Department Chairmen, 1979–80 Four-Year Colleges and Universities . . . . .	729
Junior and Community Colleges . . . . .	748
Chairmen and Directors of Ethnic Studies Programs . . . . .	759
Chairmen of Language and Area Programs . . . . .	761
Women's Studies Programs . . . . .	764
Financial Statements of the Modern Language Association . . . . .	769
Fellowships and Grants . . . . .	772
Forthcoming Meetings and Conferences of General Interest . . . . .	791
Professional Notes and Comment . . . . .	800
Directory of Useful Addresses, 1979–80 . . . . .	844