



An ESEM
at low
Vacuum SEM prices?

Yes!

Affordable

Don't be confused by what other low vacuum SEM's say they can do. ESEM is the affordable microscope for today and has the best return on that investment tomorrow.

ESEM is the difference in low vacuum SEM technology; innovation and experience... we lead, they follow! ESEM keeps wet samples wet, not freeze dried. ESEM has high resolution imaging in all modes of operation, not just one. Ask us to show you.

Benefits

- ESEM with Windows NT is your investment in the future
- ESEM can analyze your samples any way you want
- ESEM means owning the highest standard in SEM technology

Philips ESEM, the universal solution.



PHILIPS

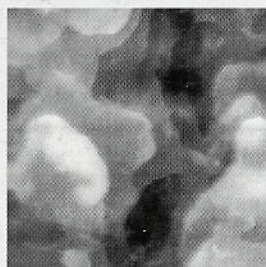
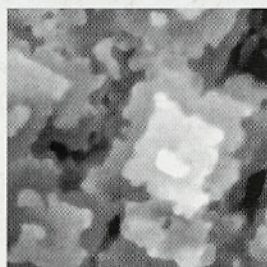
Let's make things better.

FEI Company
7451 NW Evergreen Parkway
Hillsboro, Oregon 97124-5830
Tel: 503 640 7500
Fax: 503 640 7509
Internet: www.feic.com

Circle Reader Inquiry #1

https://doi.org/10.1017/S155192950006421X

As Easy As It Looks



PEO at 60°C with evidence of melting clearly shown after 2 minutes.

- ▶ **Based on a Simple PC Interface.**
- ▶ **Intuitive Operation with a Mouse Alone.**
- ▶ **Capable of Imaging Under Either Ambient or High Vacuum and at Both High and Low Temperatures.**
- ▶ **Fully Vibrationally Isolated.**
- ▶ **Capable of Wet or Dry Imaging.**
- ▶ **Variable Gas Pressure/Temperature.**

The new JSPM-4200 is a multipurpose turnkey Scanning Probe Microscope (SPM) capable of imaging using a myriad of different modes and

JEOL USA, Inc., 11 Dearborn Road, Peabody, MA 01960
Tel: 978/535-5900 • Fax: 978/536-2205
Email: spm@jeol.com • WEB: <http://www.jeol.com>

NEW - Multi-Environmental

SPM

Scanning Probe Microscope

accessories. Imaging modes include STM, STS (Scanning Tunneling Spectroscopy), CITS (Current Imaging Tunneling Microscopy), AFM, LFM (Lateral Force Microscopy), Non-contact Mode AFM, Discrete Contact Mode AFM, Lateral Modulation LFM, MFM (Magnetic Force Microscopy), and Force Modulation Microscopy.

If you would like to learn more about JEOL SPM's please give us a call and arrange for your own hands-on demonstration so that we can prove to you that it really is "As Easy As It looks".

JEOL