

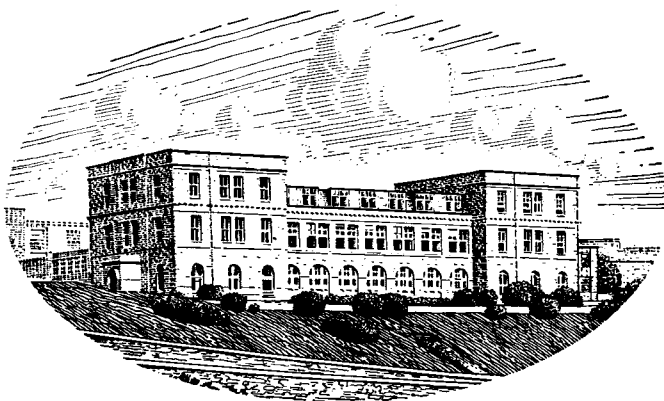
**JOURNAL OF THE
MARINE BIOLOGICAL ASSOCIATION
OF THE UNITED KINGDOM**

PUBLISHED BY
THE SYNDICS OF THE CAMBRIDGE UNIVERSITY PRESS
Bentley House, 200 Euston Road, London, N.W. 1
American Branch: 32 East 57th Street, New York, N.Y. 10022

© Copyright Marine Biological Association of the U.K.

Printed in Great Britain at the University Printing House, Cambridge

**JOURNAL OF THE
MARINE BIOLOGICAL ASSOCIATION
OF THE UNITED KINGDOM**



THE PLYMOUTH LABORATORY

VOLUME 49

1969

**CAMBRIDGE
AT THE UNIVERSITY PRESS**

1969

The Council of the Marine Biological Association wish it to be understood that they do not accept responsibility for the accuracy of statements published in this Journal, excepting when those statements are contained in an official report of the Council.

CONTENTS OF VOLUME 49

Number 1, pp. 1-262, 13 February 1969

Number 2, pp. 263-556, 8 May 1969

Number 3, pp. 557-830, 12 August 1969

Number 4, pp. 831-1092, 13 November 1969

	PAGE	
Report of the Council: 1968-69	1093	
Income and Expenditure Account and Balance Sheet: 1968-69	1129	
ANGEL, M. V.		
Planctonic ostracods from the Canary Island Region; their depth distributions, diurnal migrations and community organization	515	
ALEXANDER, R. MCN.		
The orientation of muscle fibres in the myomeres of fishes	263	
BABBAGE, P. C., see KING, BAILEY and BABBAGE	141	
BAILEY, JULIE H., see KING, BAILEY and BABBAGE	141	
BAYNE, B. L.		
The gregarious behaviour of the larvae of <i>Ostrea edulis</i> L. at settlement	327	
BLAXTER, J. H. S.		
Experimental rearing of pilchard larvae, <i>Sardina pilchardus</i>	557	
BOALCH, G. T.		
The dinoflagellate genus <i>Ptychodiscus</i> Stein	781	
BOALCH, G. T. and MOMMAERTS, J. P.		
A new punctate species of <i>Halosphaera</i>	129	
BODEN, BRIAN P.		
Observations of bioluminescence on SOND 1965 Cruise of R.R.S. 'Discovery'	669	
<i>See also</i> CURRIE, BODEN and KAMPA	489	
BONE, Q. and ROBERTS, B. L.		
The density of Elasmobranchs	913	
BRYAN, G. W.		
The absorption of zinc and other metals by the brown seaweed <i>Laminaria digitata</i>	225	
The effects of oil-spill removers ('Detergents') on the gastropod <i>Nucella lapillus</i> on a rocky shore and in the Laboratory	1067	
BUCHANAN, J. B., see CHIA and BUCHANAN		151
BUTLER, E. I., CORNER, E. D. S. and MARSHALL, S. M.		
The nutrition and metabolism of zooplankton. VI. Feeding efficiency of <i>Calanus</i> in terms of nitrogen and phosphorus	977	
CLARKE, M. R.		
A new midwater trawl for sampling discrete depth horizons	945	
Cephalopoda collected on the SOND Cruise	961	
CHIA, FU-SHIANG and BUCHANAN, J. B.		
Larval development of <i>Cucumaria elongata</i> [Echinodermata: Holothuroidea]	151	
CHUECAS, L. and RILEY, J. P.		
Component fatty acids of the total lipids of some marine phytoplankton	97	
The component combined amino acids of some marine diatoms	117	

	PAGE
CORNER, E. D. S., <i>see</i> BUTLER, CORNER and MARSHALL	977
CURRIE, R. I., BODEN, B. P. and KAMPA, E. M. An investigation on sonic-scattering layers: the R.R.S. 'Discovery' SOND Cruise 1965	489
DANDO, P. R. Lactate metabolism in fish	209
A glucosephosphate isomerase inhibitor of seasonal occurrence in cod (<i>Gadus morhua</i>) and other fish	447
EAGLE, D. J., <i>see</i> HORNE, FOGG and EAGLE	393
EDMUNDS, M. and KRESS, A. On the European species of <i>Eubranchus</i> [Mollusca Opisthobranchia]	879
FINCHAM, A. A. Amphipods of the shallow-waters and community in the Northern Irish Sea	1003
FITZMAURICE, P., <i>see</i> KENNEDY and FITZMAURICE	683
FOGG, G. E., <i>see</i> HORNE, FOGG and EAGLE	393
FOXTON, P. SOND Cruise 1965. Biological sampling methods and procedures	603
GIBBS, P. E. A quantitative study of the polychaete fauna of certain fine deposits in Plymouth Sound	311
GIBSON, R. and JENNINGS, J. B. Observations on the diet, feeding mechanisms, digestion and food reserves of the en- tocommensal rhynchocoelan <i>Macacobdella grossa</i>	17
GIBSON, R. and TONG, L. J. Observations on the biology of the marine leech <i>Oceanobdella blenii</i>	433
GILPIN-BROWN, J. B. Host-adoption in the commensal polychaete <i>Nereis fucata</i>	121
GUPTA, BRIJ, L. and LITTLE, COLIN Studies on Pogonophora. II. Ultrastructure of the tentacular crown of <i>Siphonobranchia</i> 717	717
HALLIDAY, R. G. Distribution and regional variation of <i>Argentina sphyraena</i> [Pisces: Isospondyli]	189
Population parameters of <i>Argentina sphyraena</i> [Isospondyli] from west of Britain	407
Reproduction and feeding of <i>Argentina sphyraena</i> [Isospondyli] in the Clyde Sea area	785
HAYWARD, J. Studies on the growth of <i>Phaeodactylum tricornerutum</i> . V. The relationship to iron, manganese and zinc	439
HERRING, PETER J. Pigmentation and carotenoid metabolism of the marine isopod <i>Idotea metallica</i>	767
HOBDEN, D. J. Iron metabolism in <i>Mytilus edulis</i> . II. Uptake and distribution of radioactive iron	661
HORNE, A. J., FOGG, G. E. and EAGLE, D. J. Studies <i>in situ</i> of the primary production of an area of inshore antarctic sea	393
HUGHES, ROGER N. A study of feeding in <i>Scrobicularia plana</i>	805
JENNINGS, J. B., <i>see</i> GIBSON and JENNINGS	17
JOHN, D. M. An ecological study on <i>Laminaria ochroleuca</i>	175

	PAGE
JONES, K. and STEWART, W. P. D.	
Nitrogen turnover in marine and brackish habitats. III. The production of extra-cellular nitrogen by <i>Calothrix scopulorum</i>	475
Nitrogen turnover in marine and brackish habitats. IV. Uptake of the extracellular products of the nitrogen-fixing alga <i>Calothrix scopulorum</i>	701
KAIN, JOANNA M.	
The biology of <i>Laminaria hyperborea</i> . V. Comparison with early stages of competitors	455
KAMPA, E. M., see CURRIE, BODEN and KAMPA	489
KATONA, S. K. and MOODIE, C. F.	
Breeding of <i>Pseudocalanus elongatus</i> in the Laboratory	743
KENNEDY, M. and FITZMAURICE, P.	
Age and growth of thick-lipped grey mullet <i>Crenimugil labrosus</i> in Irish waters	683
KHALIL, L. F.	
Larval nematodes in the herring (<i>Clupea harengus</i>) from British coastal waters and adjacent territories	641
KING, P. E., BAILEY, J. H. and BABBAGE, P. C.	
Vitellogenesis and formation of the egg chain in <i>Spirorbis borealis</i> (Serpulidae)	141
KRESS, A., see EDMUNDS and KRESS	879
LEEDALE, G. F., see MANTON and LEEDALE	I
LISS, P. S.	
Reactive silicate concentrations observed in the Irish Sea	577
LISS, P. S. and SPENCER, C. P.	
An investigation of some methods used for the determination of silicate in sea water	589
LITTLE, COLIN, see GUPTA and LITTLE	717
MANTON, I. and LEEDALE, G. F.	
Observations of the microanatomy of <i>Coccolithus pelagicus</i> and <i>Cricosphaera carterae</i> , with special reference to the origin and nature of coccoliths and scales	I
MARSHALL, S. M. see BUTLER, CORNER and MARSHALL	977
MAUCHLINE, J.	
The biology of <i>Leptomysis gracilis</i> and <i>L. lingvura</i> [Crustacea, Mysidacea]	379
Chonistomatid parasites on species of <i>Erythrops</i> [Crustacea, Mysidacea]	391
MILLER, P. J.	
Systematics and biology of the leopard-spotted Goby, <i>Gobius ephippiatus</i> (Teleostei: Gobiidae), with description of a new genus and notes on the identity of <i>G. macrolepis</i> Kolombatovic	831
MOMMAERTS, J. P.	
On the distribution of major nutrients and phytoplankton in the Tamar estuary	749
See also BOALCH and MOMMAERTS	129
MOODIE, C. F., see KATONA and MOODIE	743
NORTON, TREVOR A.	
Growth form and environment in <i>Saccorhiza polyschides</i>	1025
PILKINGTON, J. B.	
The organization of skeletal tissues in the spines of <i>Echinus esculentus</i>	857
REEVE, M. R.	
Growth metamorphosis and energy conversion in the larvae of the prawn, <i>Palaemon serratus</i>	77
RILEY, J. P. and SEGAR, D. A.	
The pigments of some further marine phytoplankton species	1047

	PAGE
RILEY, J. P., <i>see also</i> CHUECAS and RILEY	97, 117
ROBERTS, B. L.	
Spontaneous rhythms in the motoneurons of spinal dogfish (<i>Scyliorhinus canicula</i>)	33
The spinal nerves of the dogfish (<i>Scyliorhinus</i>)	51
The co-ordination of the rhythmical fin movements of dogfish	357
The buoyancy and locomotory movements of electric rays	621
<i>See also</i> BONE and ROBERTS	913
RUSSELL, F. S.	
On the seasonal abundance of young fish. XI. The year 1966	305
SEGAR, D. A., <i>see</i> RILEY and SEGAR	1047
SPENCER, C. F., <i>see</i> LISS and SPENCER	589
SPENCER DAVIES, P.	
Physiological ecology of <i>Patella</i> . III. Desiccation effects	291
STEWART, W. P. D., <i>see</i> JONES and STEWART	475, 701
TAYLOR, D. L.	
On the regulation and maintenance of algal numbers in Zooxanthellae-Coelenterate symbiosis, with a note on the nutritional relationship in <i>Anemonia sulcata</i>	1057
TETT, P. B.	
The effects of temperature upon the flash-stimulated luminescence of the euphausiid <i>Thysanoessa raschi</i>	245
TONG, L. J., <i>see</i> GIBSON and TONG	433
WILLIAMS, C. S.	
The effect of <i>Mytilicola intestinalis</i> on the biochemical composition of mussels	161
WOODHEAD, P. M. J.	
Influence of oestradiol 3 benzoate upon the plasma content of calcium and vitamin A aldehydes in the cod, <i>Gadus morhua</i>	939

ABSTRACTS OF MEMOIRS

RECORDING WORK DONE AT THE PLYMOUTH LABORATORY

BAKER, P. F., 1968. Recent experiments on the properties of the Na efflux from squid axons	295
BAKER, P. F. & BLAUSTEIN, M. P., 1968. Sodium-dependent uptake of calcium by crab nerve	825
BAKER, P. F., BLAUSTEIN, M. P., HODGKIN, A. L. & STEINHARDT, R. A., 1967. The effect of sodium concentration on calcium movements in giant axons of <i>Loligo forbesi</i>	825
BAKER, P. F., BLAUSTEIN, M. P., MANIL, J. & STEINHARDT, R. A., 1967. A ouabain-insensitive, calcium-sensitive sodium efflux from giant axons of <i>Loligo</i>	825
BAKER, P. F., FOSTER, R. F., GILBERT, D. S. & SHAW, T. I., 1968. Sodium transport and perfused axons	825
BAKER, P. F. & MANIL, J., 1968. The rates of action of K ⁺ and ouabain on the sodium pump in squid axons.	826
COHEN, L. B., KEYNES, R. D. & HILLE, B., 1968. Light scattering and birefringence changes during nerve activity	259
CORNER, E. D. S. & COWEY, C. B., 1968. Biochemical studies on the production of marine zooplankton	826
COOPER, L. H. N., 1967. Stratification in the deep ocean	259

CONTENTS OF VOLUME 49

ix

	PAGE
COOPER, L. H. N., 1968. Scientific consequences of the wreck of the 'Torrey Canyon'	260
DIGBY, P. S. B., 1967. Pressure sensitivity and its mechanism in the shallow marine environment	260
EDMUNDS, M., 1968. Acid secretion in some species of Doridacea (Mollusca, Nudibranchia)	826
GEORGE, J. D., 1968. The effect of the 1962-63 winter on the distribution of the cirratulid polychaetes, <i>Cirratulus cirratus</i> (Muller) and <i>Cirriformia tenaculata</i> (Montague) in the British Isles	261
HUGHES, G. M. & BALLINTIJN, C. M., 1968. Electromyography of the respiratory muscles and gill water flow in the dragonet	827
HUGHES, G. M. & KNIGHTS, B., 1968. On the effect of loading the respiratory pumps on the oxygen consumption of <i>Callionymus lyra</i>	827
HUGHES, G. M. & UMEZAWA, S.-I., 1968. Oxygen consumption and gill water flow in the dogfish <i>Scyliorhinus canicula</i>	827
HUGHES, G. M. & UZEMAWA, S.-I., 1968. On respiration in the dragonet <i>Callionymus lyra</i>	828
KRESS, A., 1968. Untersuchungen zur Histologie, Autotomie und Regeneration dreier Doto-Arten <i>Doto coronata</i> , <i>D. pinatifida</i> , <i>D. fragilis</i>	828
KRESS, A., 1968. <i>Trapania pallida</i> sp.nov. (Opisthobrancia, Gastropoda), a genus new to Britain	829
MANWELL, C. & BAKER, C. M. A., 1968. Genetic variations of isocitrate, malate and 6-phosphogluconate dehydrogenases in snails of the genus <i>Cepaea</i> —introgressive hybridization, polymorphism and pollution?	261
MCLACHLAN, J., 1968. Cystocarpic plants of <i>Gigartina teedii</i> —a new record for the British Isles.	829
NEWROTH, P. R. & TAYLOR, A. R. A., 1968. The distribution of <i>Ceratocolax hartzii</i>	829
POTTS, G. W., 1968. Unwanted soil	829
SOUTHWARD, A. J. & SOUTHWARD, E. C., 1968. Uptake and incorporation of labelled glycine by pogonophores	830
WICKSTEAD, J. H., 1967. Pelagic copepods as food organisms	261
WICKSTEAD, J. H., 1968. Temperate and tropical plankton; a quantitative comparison	262

BOOK REVIEW

The central nervous system and fish behaviour. Edited by D. Ingle	555
---	-----

CORRIGENDA

- Page 43, Fig. 9, Legend, line 3, *for 2 read 4*. Delete line 4.
- Page 138, REFERENCES, line 8, *for Morris read Norris*.
- Page 107, Table 3, insert '4', in front of '7, 10, ...', one line from bottom, *for 22:5 read 22:6*;
- Page 213, Table 1, line 2, *for centrotodontus read centrodonatus*
- Page 389, REFERENCES, line 7, delete comma after 'T'.
- Page 422, Table 4, *for 17.7 read 17.2*.
- Page 882, last column of Table, *for Egalavina read Egalvina*.
- Page 889, line 23, *for ferrani read farrani*.
- Page 891, line 24, *for 330 to 230 read 330 by 230*.
- Page 891, line 33, *for 'up the to' read 'up to the'*.
- Page 896, line 5, *for lacinulate read lacinulata*.
line 11, *for 1942 read 1842*.
29–30, insert comma between 'proximally' and 'concentrated'.
- Page 906, Table 2, *for horrii read horii*.
- Page 907, last line, *for 1965 read 1864*.
- Page 908, line 16, *for Nassis read Nossis*.
- Page 909, 14 lines and 5 lines from bottom, *for Forbes, 1929, read Forbes, 1838*.
- Page 910, 20 lines from bottom, *for 319 read 310*, 35th line for O'Donoghue C. J. read O'Donoghue, C. H.
- Page 911, line 15, *for 1953 read 1853*.
- No. 4, *back page of Cover*. Contents, first line, *for P. L. Miller read P. J. Miller*.

THE MARINE BIOLOGICAL ASSOCIATION OF THE UNITED KINGDOM

THE ASSOCIATION was founded in 1884 to promote accurate researches leading to the advancement of zoological and botanical science and to an increase in our knowledge of the food, life, conditions and habits of British fishes. The work of the Association is controlled by a Council elected annually by its subscribing members.

Professor T. H. Huxley took the chair at the initial meeting held in the rooms of the Royal Society and was elected the first President. Among those present were Sir John Lubbock (afterwards Lord Avebury), Sir Joseph Hooker, Professor H. N. Moseley, Mr G. J. Romanes, and Sir E. Ray Lankester who, after Professor Huxley, was for many years president of the Association. It was decided to build a laboratory at Plymouth, where a rich and varied fauna is found.

The Plymouth Laboratory was opened in June 1888, and, since that date, considerable additions have been made to the buildings, including a library, lecture-hall, and extensive laboratory accommodation with up-to-date equipment. Additional sea-water reservoirs have also been built, and an aquarium, modernized in 1959, opened to the public.

Since its foundation the Association has been supported by subscriptions and donations from private members, universities, learned societies, the Fishmongers' Company and other public bodies. For some time past, however, the main financial support for the work of the Plymouth Laboratory has come from Government funds, and since 1965 the Laboratory has been grant-aided through the Natural Environment Research Council.

The Marine Biological Association, under the direction of its Council, undertakes research in all branches of marine science and the main results are published in this Journal. Accounts of the laboratory and aquarium are to be found in Vol. 27 (p. 761), Vol. 39 (p. 391) and Vol. 43 (p. 281), and summaries of the activities and research of the Association are given annually in the Report of the Council in the November issue of the Journal.

The laboratory is open throughout the year and its work is carried out by a fully qualified research staff under the supervision of the Director. The names of the members of the staff will be found on the inner page of the front cover. Accommodation is available for British and foreign scientific workers who wish to carry out independent research in all branches of marine science. Arrangements are made for courses for advanced students, and marine animals and plants are supplied to educational institutions.

Work at sea is undertaken by three research vessels and by a motor boat, and these also collect the specimens required in the laboratory.

TERMS OF MEMBERSHIP

	<i>£</i>	<i>s.</i>	<i>d.</i>
Annual Members, receiving the Journal per annum	3	0	0
Annual Members, without the Journal per annum	1	1	0
Junior Members, receiving the Journal per annum	1	1	0
Life Members. Composition fee	45	0	0
Founders	100	0	0
Governors	500	0	0

Members of the Association have the following rights and privileges: they elect annually the Officers and Council; they are entitled to receive the Journal of the Association at a much reduced rate; they are admitted to view the laboratory at Plymouth, and may introduce friends with them; they have the first claim to rent a place in the laboratory for research, with use of tanks, boats, etc; they have the privilege of occupying a table for one week in each year free of charge; and they have access to the books in the library at Plymouth.

The Commissioners of Inland Revenue have approved the Association for the purposes of Section 16, Finance Act, 1958, and that the whole of the annual subscription paid by a member who qualifies for relief under the section will be allowable as a deduction from his emoluments assessable to income tax under Schedule E.

All correspondence should be addressed to the Director, The Laboratory, Citadel Hill, Plymouth.

CONTENTS

	PAGE
P. L. MILLER. Systematics and biology of the Leopard-spotted Goby, <i>Gobius ephippiatus</i> [Teleostei: Gobiidae], with description of a new genus and notes on the identity of <i>G. macrolepis</i> Kolombatovic	831
J. B. PILKINGTON. The organization of skeletal tissues in the spines of <i>Echinus esculentus</i> .	857
MALCOLM EDMUNDS and ANNETRUDI KRESS. On the European species of <i>Eubranchus</i> [Mollusca Opisthobranchia]	879
Q. BONE and B. L. ROBERTS. The density of elasmobranchs	913
P. M. J. WOODHEAD. Influence of oestradiol 3-benzoate upon the plasma content of calcium and vitamin A aldehydes in the Cod, <i>Gadus morhua</i>	939
MALCOLM R. CLARKE. A new midwater trawl for sampling discrete depth horizons. .	945
MALCOLM R. CLARKE. Cephalopoda collected on the SOND cruise	961
E. I. BUTLER, E. D. S. CORNER and S. M. MARSHALL. On the nutrition and metabolism of zooplankton. VI. Feeding efficiency of <i>Calanus</i> in terms of nitrogen and phosphorus	977
A. A. FINCHAM. Amphipods of the shallow-water sand community in the northern Irish Sea	1003
TREVOR A. NORTON. Growth form and environment in <i>Saccorhiza polyschides</i> . .	1025
J. P. RILEY and D. A. SEGAR. The pigments of some further marine phytoplankton species	1047
D. L. TAYLOR. On the regulation and maintenance of algal numbers in zooxanthellae-coelenterate symbiosis, with a note on the nutritional relationship in <i>Anemonia sulcata</i>	1057
G. W. BRYAN. The effects of oil-spill removers ('detergents') on the gastropod <i>Nucella lapillus</i> on a rocky shore and in the laboratory	1067
REPORT OF THE COUNCIL FOR 1968-69	1093
BALANCE SHEET 1968-69	1129

The subscription price of the Journal to non-members of the Association is £14 net a volume of four parts, post free, or \$47.00 in U.S.A., payable in advance. Subscriptions may be sent to any bookseller or to the Cambridge University Press, and in U.S.A. to the Cambridge University Press American Branch.

CAMBRIDGE UNIVERSITY PRESS

BENTLEY HOUSE, 200 EUSTON ROAD, LONDON, N.W.1

AMERICAN BRANCH: 32 EAST 57TH STREET, NEW YORK, N.Y. 10022

Printed in Great Britain at the University Printing House, Cambridge