

The Journal of

**THE HELICOPTER
ASSOCIATION OF
GREAT BRITAIN**

CONTENTS include

ALL WEATHER HELICOPTER SYSTEMS
by W Gerstenberger

CIERVA MEMORIAL ESSAY COMPETITION 1957

THE THEORETICAL APPROACH TO SOME ROTOR
BLADE FLUTTER AND FORCED VIBRATION
PROBLEMS
by W E Hooper

LONDON
4, THE SANCTUARY,
WESTMINSTER, S W 1

Vol 12 No 6 DECEMBER 1958

ROTOR BLADES

by **HORDERN-RICHMOND**



*Photograph of P 531 reproduced
by courtesy of Saunders Roe Ltd*

HELICOPTER, WIND TUNNEL AND AIRSCREW BLADES

The Saunders-Roe P 531 The blades for both the main and tail rotors of this new, turbine powered helicopter have been designed and manufactured by

HORDERN-RICHMOND

who also make tail rotor blades for Bristol and Westland helicopters, and supply Hydulignum for the main rotor blades of the BRISTOL "SYCAMORE" and "173" helicopters

Specialists in jigs and press tools of Hydulignum and Permaglass
for the manufacture of aircraft components



HORDERN-RICHMOND LIMITED BRISTOL ROAD, GLOUCESTER

Telephone Gloucester 24941

SEPARATION

Decca's high accuracy and coverage at all altitudes allows close lateral track separation of all aircraft. The new large scale charts permit safe separation of helicopters in the confined airspace frequently allocated to this type of aircraft.

COVERAGE

With solid cover at low altitudes Decca suits the helicopter "down to the ground". Unaffected by altitude, terrain, weather or the limitations of line of sight systems, the Decca Navigator System can be used to navigate with the greatest accuracy from city centre to city centre. Over some million square miles in Europe, the system is sufficiently accurate to be used as an approach aid.



FLEXIBILITY

This area coverage system allows any predetermined track to be maintained precisely. The flight log gives a precise and continuous display of the aircraft's position at all times, thus allowing complete flexibility of routing.

INTEGRATION

Decca, the only system available to every type of aircraft, both rotary and fixed wing, irrespective of altitude, ensures the maximum utilisation of available air space by providing solid cover at all altitudes. Light and compact enough to be fitted in the smallest aircraft and with the pictorial presentation of the flight log, Decca allows existing air traffic control procedures to be carried out with great accuracy and ease.

**THE WORLD'S
MOST ACCURATE
NAVIGATION SYSTEM**

**THE DECCA
NAVIGATOR**

THE DECCA NAVIGATOR COMPANY LTD LONDON ENGLAND

Power for the Widgeon

The Alvis Leonides which powers the Westland Widgeon has already proved itself in many thousand hours of helicopter operation and is in extensive use with the Royal Navy, the Army, the Royal Air Force and many civilian operators.



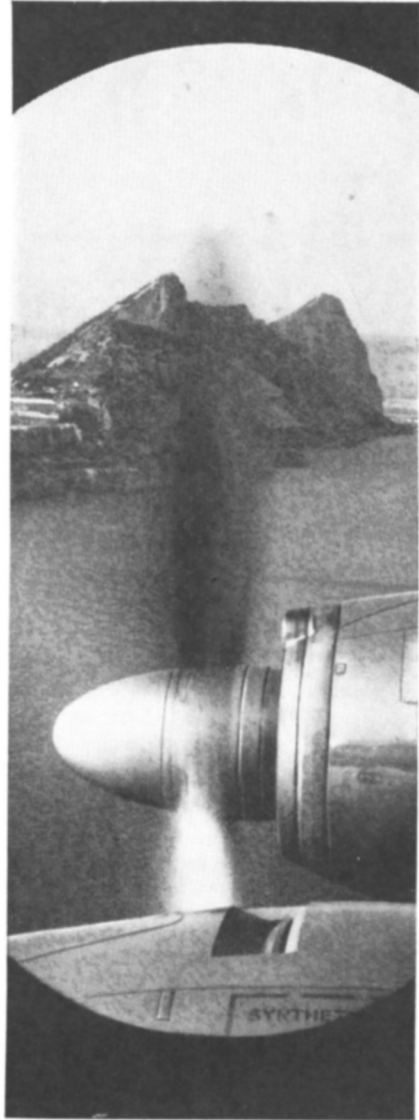
ALVIS **LEONIDES AERO ENGINES**
ALVIS LIMITED COVENTRY ENGLAND

Up in the air...

.. all over the world

the majority of modern aircraft
depend on Rotax Units

Rotax have been specialists in
the design and manufacture of
electrical and starting systems for
aircraft for more than 40 years
Today, all Rotax facilities for
research, development, manufacture
and a comprehensive advisory
service are at the service of the
aircraft industries of the world



ROTAX

Complete Electrical and Starting Systems for Aircraft

Rotax Limited Willesden Junction London N W 10
Lucas Rotax (Australia) Pty Ltd Melbourne and Sydney Australia
Lucas Rotax Ltd Toronto Montreal and Vancouver Canada



Instruments and control systems

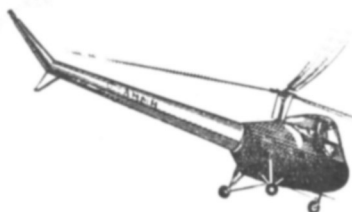
SPERRY

SPERRY GYROSCOPE COMPANY LONDON NEW YORK MONTREAL

Gears for Rotor Drives



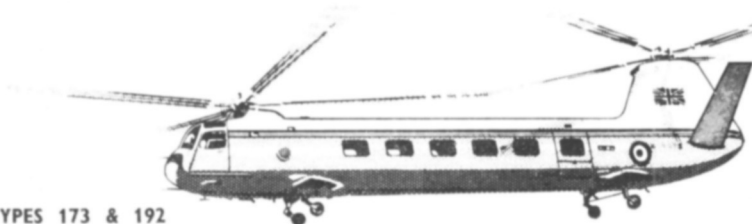
SUD AVIATION 'ALOUTTE' II



SAUNDERS ROE 'SKEETER'



WESTLAND 'WHIRLWIND'



BRISTOL TYPES 173 & 192

All British shaft-driven helicopters in current production, as well as rotating wing aircraft now in production on the Continent incorporate E N V precision spiral bevel gears, E N V gears are also regularly furnished for aero engines, flying controls and accessory drives. The design and development of precision gears for angular drives calls for the specialised knowledge, technique and manufacturing facilities which E N V can place at the disposal of the aircraft industry.

EN V

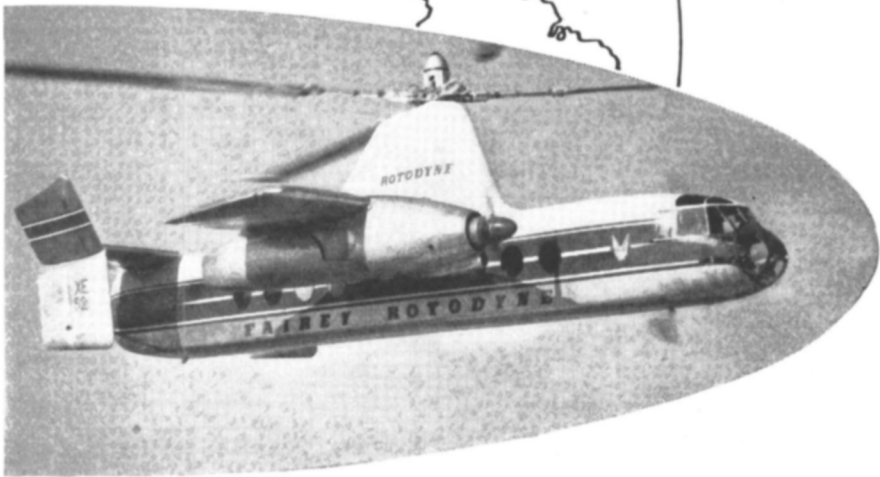
FOR GEARS



EN V ENGINEERING CO., LTD., HYTHE ROAD, WILLESDEN, LONDON, N W 10
Tel LADbroke 3622 AP65



CANADA
looks forward
to ROTODYNE
travel . . .



Chosen by the world's largest commercial operator of helicopters, Okanagan Helicopters of Vancouver, the Rotodyne vertical take off airliner will be in service in two to three years' time. The Rotodyne Era of first convenient, comfortable travel is closer than most people have realised. Because of its unique potential the Rotodyne is regarded as an airliner of the future. And so it is. But the threshold of that future is now just a short step away.

FAIREY

Rotodyne

Powered by Napier Eland turbo props

THE FAIREY AVIATION COMPANY LIMITED HAYES MIDDLESEX ENGLAND
and The Fairey Aviation Company of Canada Limited Eastern Passage Halifax Nova Scotia Canada

The Journal of
THE HELICOPTER ASSOCIATION
OF GREAT BRITAIN

President
 L MLNSIORIH CBE MA, MIMechL FR AeS MIPE
Past Presidents
 J G Weir CMG CBE FR AeS
 I Mensforth CBE MA MIMechL FR AeS M I L
 Marshal of the RAF Lord Douglas of Kirtleside GCB MC DFC
 The Rt Hon Lord Brabazon of Tara GBE MC PC Hon FR AeS
Vice Presidents
 R A C Brie AFR AeS AFI AeS
 C S Hislop PhD BSc (Eng) ARCST MIMechL I R AeS

Offices 4, The Sanctuary, Westminster, S W 1 Tel Abbey 5160

VOL 12 No 6

DECEMBER, 1958

PRICE 10/6

THE COUNCIL

Chairman

J W Richardson AFR AeS
 B H Arkell AFR AeS
 J A J Bennett DSc Ph D
 FR AeS
 R A C Brie AFR AeS
 AFI AeS
 A E Bristow ARAeS
 J A Cameron
 L G Frise BSc, FR AeS
 AFI AeS
 W R Gellatly AFC
 M H C Gordon
 R Hafner FR AeS
 J E Harper AFC
 N J G Hill AMIMechL
 ARAeS MCAI
 A McClements ARCS
 MIMechL
 J S Shapiro Dipl Ing
 AFR AeS
 D L Hollis Williams BSc
 FR AeS

Hon Secretary

R H Whitby DIC ARAeS
 BSc FR AeS

Hon Treasurer

W G Leslie ACIS

Asst Secretary

Miss P Chute

Journal Hon Editor

B H Arkell AFR AeS

Technical Editors

D M Davies MA AFR AeS
 A McClements ARCS
 MIMechL
 J S Shapiro Dipl Ing
 AFR AeS
 P H Whitby DIC ARCS
 BSc FR AeS

Librarian

R W L Cure

Auditors

W B Keen & Co

The opinions expressed in papers read before the Association and in the discussions also recorded in this Journal are not necessarily those of the Executive Council or of the Association as a whole

CONTENTS

	<i>Page</i>
ALL-WEATHER HELICOPTER SYSTEMS	
By W GERSTENBERGER	265
DISCUSSION	273
CIERVA MEMORIAL ESSAY COMPETITION, 1957	
THE THEORETICAL APPROACH TO SOME ROTOR BLADE FLUTTER AND FORCED VIBRATION PROBLEMS	
By W E HOOPER	282
ANNUAL REVIEW OF HELICOPTER ACTIVITIES	308
BOOK REVIEWS	328

OBJECTS OF THE ASSOCIATION

The objects of the Association are to collect complete and disseminate information of a technical and semi technical nature pertaining to Helicopters and all other types of Rotating Wing Aircraft. The Association aims to work in close co operation with existing Aeronautical Bodies on matters affecting its objects and it may act as an Advisory Body in the promotion of legislation calculated to be of benefit to the development of Rotating Wing Aircraft

Publications Manager

S H Pilton Lthugham House Arundel Street London WC 2



Wessex

a NEW Helicopter for Army-Air Operations

The Westland Wessex turbine-powered helicopter, now in full production for the Royal Navy, also meets the requirement for the transport of Commando troops and equipment between beach heads and assault areas

Sixteen fully-equipped troops can be lifted on each sortie, and with positioning made whilst the helicopter is hovering feet above the ground, turn-round time is negligible

The Napier Gazelle turbine engine enables the Wessex to airborne from a cold start within 45 seconds, thus ensuring instant readiness at all times

WESTLAND
— a great name in **HELICOPTERS**

WESTLAND AIRCRAFT LIMITED YEOVIL SOMERSET ENGLAND