

---

## list of contributors

**Åsa Berggren** is a Ph.D. student at Lund University, Sweden, and has been working in contract archaeology in Scania in south Sweden for the past fifteen years. She has just completed her thesis, which concerns wetland depositions and is a critical study of the offering concept and its use in archaeology. The analytical tools used in the study are taken from practice theory and include the concepts of objectification and embodiment, as well as sensuous experience.

**Tim Flohr Sørensen** is a postdoctoral researcher on the international EU-funded Forging Identities project, studying learning and aesthetics in the dissemination of bronze technology in the Early Bronze Age. He has recently graduated with a Ph.D. from the University of Aarhus, Denmark, with a thesis on emotions, movement and material culture based on a comparative study of Danish cemeteries from prehistory and contemporary society. He has published research on luminosity (with Mikkel Bille, *Journal of material culture* 2007, 12(3)), cremation (with Mikkel Bille, *World archaeology* 2008, 40(2)) and contemporary Danish cemetery culture (*Journal of social archaeology* 2009, 9(1)). He is one of the editors (with Mikkel Bille and Frida Hastrup) on the recently published volume *An anthropology of absence. Materialisations of transcendence and loss* (Springer). Other research interests include material culture studies, the senses, landscape archaeology, atmosphere and architecture.

**Alexander Gramsch** received degrees from Cambridge University (UK) and Leipzig University (Germany). His primary research interests are matters of theory and methodology. Moreover, he has worked on agency in Bronze Age cremation burials, on the Bell Beaker phenomenon and on the ritual practice of TRB barrowbuilding. He has edited *Vergleichen als archäologische Methode* (Oxford 2000), *Ritual und Kommunikation* (Bonn 2010) and co-edited, together with P.F. Biehl and A. Marciniak, *Archaeologies of Europe. History, methods and theories* (Münster 2002). He has worked for private archaeological companies; lectured at universities in Berlin, Freiburg and Leipzig; organized conferences for the German Theoretical Archaeology Group (T-AG); and was part of a research project on social interpretations in archaeology at Basel University. Currently he is conducting excavations in southwestern Germany and is editor of the *European archaeologist* as well as being one of the editors of *Archaeological dialogues*.

**Oliver J.T. Harris** works as a Leverhulme Early Career Fellow at Newcastle University, researching the prehistoric communities of southern Britain. Prior to this he worked as a postdoctoral researcher as part of the Leverhulme Trust-funded project Changing Beliefs of the Human Body at Cambridge University. This project examined how the human body has been conceptualized through a series of case studies from the Palaeolithic to the present day, and is the basis

for a co-authored monograph (with John Robb) currently being prepared for Cambridge University Press. His fieldwork focuses on prehistoric and historic changes in lifeways on the Ardnamurchan Peninsula in western Scotland, where he is codirector of the Ardnamurchan Transitions Project. Recent publications include 'Making places matter in Early Neolithic Dorset' in the *Oxford journal of archaeology*, 2009 28(2).

**Susan Kus** is Professor of Anthropology, Blount Chair in Social Science, and Chair of the Department of Anthropology and Sociology at Rhodes College, a liberal-arts college, in Memphis, Tennessee. Madagascar has been the enduring (though not exclusive) site of her research in archaeology, ethnohistory and archaeology. Her recent theoretical and thematic research interests include the appropriation of local knowledge for the ideological purposes of 'the state', feminist archaeology, orality and literacy, ritual economy, and the archaeology of religion. She is currently working on a project concerning the intellectual and symbolic contribution of powerful 'queens' to the construction of the Merina polity/'state' in the highland interior of Madagascar of the 18th century, and the potential contribution of the tales of the fate of less powerful 'wives of the sovereign' of this state to the understanding of how the monopolization of coercive power can ultimately corrupt retainers of such power.

**Oscar Moro Abadía** is Assistant Professor in the Department of Anthropology and Archaeology at Memorial University of Newfoundland, Canada. He has also worked at the University of Paris-I, the University of California, Berkeley, University College London, the University of Toronto and University of Paris X-Nanterre. His main research interests lie in the history of science and the history of archaeology.

**Adam T. Smith** is an Associate Professor in the Department of Anthropology at the University of Chicago and a co-founder of the joint American–Armenian Project for the Archaeology and Geography of Ancient Transcaucasian Societies (Project ArAGATS). He received a Ph.D. and MA from the University of Arizona's Department of Anthropology (1996) and an M.Phil. from the Social and Political Science Faculty at Cambridge University (1991). His research and writing projects examine the roles that material assemblages – landscapes, objects, representations – play in shaping political life. He is the author of *The political landscape. Constellations of authority in early complex polities* (Berkeley, CA, 2003) and co-author of *The archaeology and geography of ancient Transcaucasian societies, volume I. Regional investigations in the Tsaghkahovit Plain, Armenia* (Oriental Institute Press, 2009).

**Edward Swenson** is an Assistant Professor of Anthropology at the University of Toronto. He is currently directing large-scale survey and excavations at the prehistoric urban complex of Cañoncillo in northern Peru. Swenson's theoretical interests include the pre-industrial city, violence and the institutionalization of social inequalities, the archaeology of ritual and

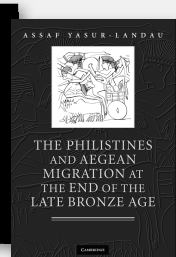
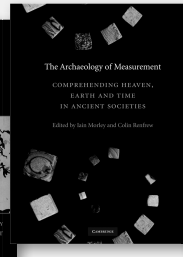
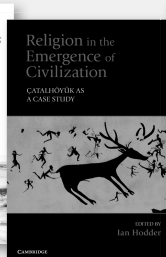
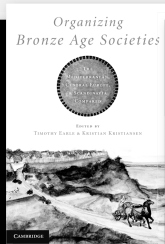
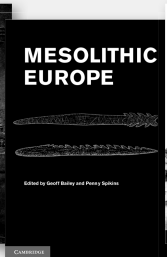
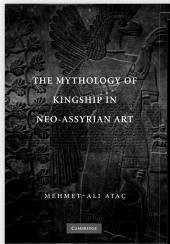
ideology, and the politics of social memory as mediated by the production and experience of architectural space. He has written technical reports on his research, as well as having published articles in books and academic journals.

**Sarah Tarlow** is Senior Lecturer in Archaeology at the University of Leicester. Her main areas of research include the later historical archaeology of Britain, the archaeology of death and burial, and archaeological theory, particularly the interpretation of emotion in archaeology and questions relating to the ethics and philosophy of archaeological practice. She has a Ph.D. from the University of Cambridge and taught at the University of Wales, Lampeter, for several years before moving to Leicester in 2000. She is the author of *Bereavement and commemoration. An archaeology of mortality* (Blackwell), and *The archaeology of improvement* (CUP), as well as co-editor of a number of other volumes and the author of many articles. Two monographs relating to her recent project on changing beliefs about the human body in post-Medieval Britain and Ireland are currently in press. Future interdisciplinary research projects into the treatment of the dead body are in the planning stages.



CAMBRIDGE

## New and Noteworthy



### The Mythology of Kingship in Neo-Assyrian Art

Mehmet-Ali Ataç

\$99.00 Hb 978-0-521-51790-4 300 pp

*Now in paperback!*

### Mesolithic Europe

Edited by Geoff Bailey,  
Penny Spikins

\$45.00 Pb 978-0-521-14797-2 498 pp

*Now in paperback!*

### Material Cultures, Material Minds

The Impact of Things On Human  
Thought, Society, and Evolution

Nicole Boivin

\$33.99 Pb 978-0-521-17613-2 288 pp

### Human Evolution and the Origins of Hierarchies

The State of Nature

Benoît Dubreuil

\$85.00 Hb 978-0-521-76948-8 280 pp

### The Prehistory of Asia Minor From Complex Hunter-Gatherers to Early Urban Societies

Bleda S. Düring

\$95.00 Hb 978-0-521-76313-4 350 pp

\$34.99 Pb 978-0-521-14981-5

*Prices are subject to change.*

### Organizing Bronze Age Societies

The Mediterranean, Central Europe,  
and Scandinavia Compared

Edited by Timothy Earle,  
Kristian Kristiansen

\$95.00 Hb 978-0-521-76466-7 348 pp

\$29.99 Pb 978-0-521-74835-3

### The Idea of Cultural Heritage

Second Edition

Derek Gillman

\$90.00 Hb 978-0-521-19255-2 216 pp

\$27.99 Pb 978-0-521-12257-3

### Religion in the Emergence of Civilization

Catalhöyük as a Case Study

Edited by Ian Hodder

\$95.00 Hb 978-0-521-19260-6 376 pp

\$37.99 Pb 978-0-521-15019-4

### Globalizations and the Ancient World

Justin Jennings

\$85.00 Hb 978-0-521-76077-5 216 pp

### The Archaeology of Measurement

Comprehending Heaven, Earth and  
Time in Ancient Societies

Edited by Iain Morley,  
Colin Renfrew

\$95.00 Hb 978-0-521-11990-0 284 pp

\$36.99 Pb 978-0-521-13588-7

*Now in paperback!*

### Roman Pottery in the Archaeological Record

J. Theodore Peña

\$34.99 Pb 978-0-521-18185-3 458 pp

*Now in paperback!*

### Roman Imperialism and Local Identities

Louise Revell

\$29.99 Pb 978-0-521-17473-2 238 pp

### Ritual, Belief and the Dead Body in Early Modern Britain and Ireland

Sarah Tarlow

\$90.00 Hb 978-0-521-76154-3 252 pp

### The Philistines and Aegean Migration at the End of the Late Bronze Age

Assaf Yasur-Landau

\$95.00 Hb 978-0-521-19162-3 412 pp

[www.cambridge.org/us](http://www.cambridge.org/us)



CAMBRIDGE  
UNIVERSITY PRESS



# THE CLASSICAL REVIEW

Published for The Classical Association

#### **Classical Review**

is available online at:

<http://journals.cambridge.org/car>

#### **To subscribe contact Customer Services**

##### **in Cambridge:**

Phone +44 (0)1223 326070

Fax +44 (0)1223 325150

Email [journals@cambridge.org](mailto:journals@cambridge.org)

##### **in New York:**

Phone +1 (845) 353 7500

Fax +1 (845) 353 4141

Email

[subscriptions\\_newyork@cambridge.org](mailto:subscriptions_newyork@cambridge.org)

#### **Editors**

Roy Gibson, University of Manchester, UK

Neil Hopkinson, Trinity College, Cambridge, UK

*The Classical Review publishes* informative reviews from leading scholars on new work covering the literatures and civilizations of ancient Greece and Rome. Publishing over 150 high quality reviews and 50 brief notes every year, *The Classical Review* is an indispensable reference tool, essential for keeping abreast with current classical scholarship.

**Price information is available at:**  
**<http://journals.cambridge.org/car>**

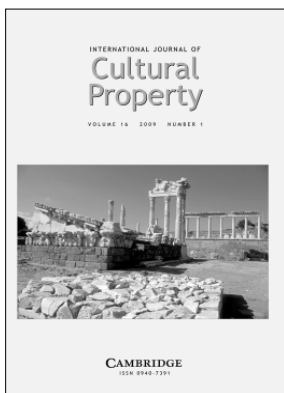
#### **Free email alerts**

**Keep up-to-date with new material – sign up at**  
**<http://journals.cambridge.org/alerts>**

**For free online content visit:**  
**<http://journals.cambridge.org/car>**



**CAMBRIDGE  
UNIVERSITY PRESS**



# International Journal of Cultural Property

Published for the International Cultural Property Society

***International Journal of Cultural Property***

is available online at:

<http://journals.cambridge.org/jcp>

**To subscribe contact  
Customer Services**

**in Cambridge:**

Phone +44 (0)1223 326070

Fax +44 (0)1223 325150

Email [journals@cambridge.org](mailto:journals@cambridge.org)

**in New York:**

Phone +1 (845) 353 7500

Fax +1 (845) 353 4141

Email

[subscriptions\\_newyork@cambridge.org](mailto:subscriptions_newyork@cambridge.org)

**Editor**

Alexander A. Bauer, Queens College, CUNY, USA

*International Journal of Cultural Property* provides a vital, international, and multidisciplinary forum for the broad spectrum of views surrounding cultural property, cultural heritage, and related issues. Its mission is to develop new ways of dealing with cultural property debates, to be a venue for the proposal or enumeration of pragmatic policy suggestions, and to be accessible to a wide audience of professionals, academics and lay readers.

**Price information is available at:**  
**<http://journals.cambridge.org/jcp>**

**Free email alerts**

Keep up-to-date with new material – sign up at  
<http://journals.cambridge.org/alerts>

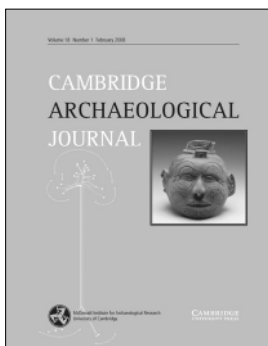
**For free online content visit:**  
<http://journals.cambridge.org/jcp>



**CAMBRIDGE  
UNIVERSITY PRESS**

CAMBRIDGE

JOURNALS



# CAMBRIDGE ARCHAEOLOGICAL JOURNAL

**Cambridge Archaeological Journal**

is available online at:

[journals.cambridge.org/caj](http://journals.cambridge.org/caj)

**To subscribe contact  
Customer Services**

**in Cambridge:**

Phone +44 (0)1223 326070

Fax +44 (0)1223 325150

Email [journals@cambridge.org](mailto:journals@cambridge.org)

**in New York:**

Phone (845) 353 7500

Fax (845) 353 4141

Email

[subscriptions\\_newyork@cambridge.org](mailto:subscriptions_newyork@cambridge.org)

**Editor**

John Robb, University of Cambridge, UK

The Cambridge Archaeological Journal is the leading journal for cognitive and symbolic archaeology. It provides a forum for innovative, descriptive and theoretical archaeological research, paying particular attention to the role and development of human intellectual abilities and symbolic beliefs and practices.

**Price information is available at:**

***[journals.cambridge.org/caj](http://journals.cambridge.org/caj)***

**Free email alerts**

**Keep up-to-date with new material –  
sign up at [journals.cambridge.org/register](http://journals.cambridge.org/register)**

**For a free online sample visit:**  
***[journals.cambridge.org/caj](http://journals.cambridge.org/caj)***

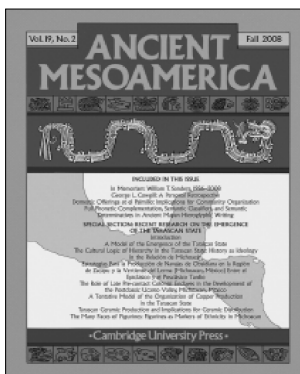


**CAMBRIDGE  
UNIVERSITY PRESS**



CAMBRIDGE

JOURNALS



# ANCIENT MESOAMERICA

## **Ancient Mesoamerica**

is available online at:

<http://journals.cambridge.org/atm>

## **To subscribe contact Customer Services**

### **in Cambridge:**

Phone +44 (0)1223 326070

Fax +44 (0)1223 325150

Email [journals@cambridge.org](mailto:journals@cambridge.org)

### **in New York:**

Phone +1 (845) 353 7500

Fax +1 (845) 353 4141

Email

[subscriptions\\_newyork@cambridge.org](mailto:subscriptions_newyork@cambridge.org)

## **Editor**

William R. Fowler, Vanderbilt University, USA

Geoffrey G. McCafferty, University of Calgary, Canada

*Ancient Mesoamerica* is the international forum for the method, theory, substance and interpretation of Mesoamerican archaeology, art history and ethnohistory. The journal publishes papers chiefly concerned with the Pre-Columbian archaeology of the Mesoamerican region, but also features articles from other disciplines including ethnohistory, historical archaeology and ethnoarchaeology.

**Price information is available at:**  
<http://journals.cambridge.org/atm>

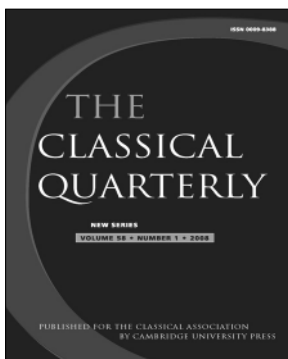
## **Free email alerts**

Keep up-to-date with new material – sign up at  
<http://journals.cambridge.org/alerts>

**For free online content visit:**  
<http://journals.cambridge.org/atm>



**CAMBRIDGE  
UNIVERSITY PRESS**



# The Classical Quarterly

Published for The Classical Association

#### **The Classical Quarterly**

is available online at:

<http://journals.cambridge.org/caq>

#### **To subscribe contact Customer Services**

##### **in Cambridge:**

Phone +44 (0)1223 326070

Fax +44 (0)1223 325150

Email [journals@cambridge.org](mailto:journals@cambridge.org)

##### **in New York:**

Phone (845) 353 7500

Fax (845) 353 4141

Email

[subscriptions\\_newyork@cambridge.org](mailto:subscriptions_newyork@cambridge.org)

#### **Editors**

Miriam Griffin, Somerville College, Oxford, UK

Judith Mossman, University of Nottingham, UK

*The Classical Quarterly* has a reputation for publishing the highest quality classical scholarship for nearly 100 years. It publishes research papers and short notes in the fields of language, literature, history and philosophy. Given the quality and depth of the articles published in *The Classical Quarterly*, any serious classical library needs to have a copy on its shelves.

**Price information is available at:**  
**<http://journals.cambridge.org/caq>**

#### **Free email alerts**

Keep up-to-date with new material – sign up at  
**<http://journals.cambridge.org/alerts>**

**For free online content visit:**  
**<http://journals.cambridge.org/caq>**



**CAMBRIDGE  
UNIVERSITY PRESS**

## Guidelines for contributors

*Archaeological dialogues* is a broad, peer-reviewed journal for debating archaeology. Articles should be accessible to an audience which may be unfamiliar with the specific period and region discussed. Transparent writing is encouraged above abstruse reasoning. Jargon should be avoided and succinct writing is appreciated. We value good illustrations. These can include photographs, line-drawings and maps.

### Procedure

The *Archaeological dialogues* publishing process includes the following steps: submission, evaluation, decision (acceptance, modification or rejection), copy-editing, proof-reading, publication, and distribution. In order to guarantee efficient and quality publication contributors are requested to adhere closely to the following guidelines:

- All manuscripts should be written in English. Manuscripts that seriously fail to conform to the guidelines will be returned to authors for revision before they will be considered.
- When submitting a contribution to *Archaeological dialogues*, it will be acknowledged on receipt. One of the editors will be the contact person for a paper throughout the entire process. If scope, quality and language are appropriate it will be sent to two anonymous referees for expert opinion. Usually within two or three months, the editors will inform you of their final decision. In the case of rejection, an editorial justification will be provided, including the original referees' reports. In the case of acceptance – which may be conditional on revisions – one of the editors will guide you through the rest of the publishing process. Before an article goes into print, authors will receive a copy of the proofs to check. The entire procedure between submission and appearance should take less than a year.

### Types of contributions

*Archaeological dialogues* essentially publishes two types of papers, namely 'discussion articles' and 'notes'. The former are accompanied by published comments and a reply. Discussion articles are usually longer, they can be up to 8–9000 words whereas notes typically are around 4–5000 words. Discussion articles usually take longer to appear in print because of the time required for comments and reply. Review essays and interviews are usually solicited by the editorial board, but scholars with suggestions in this direction are encouraged to contact us.

### Submission of contributions

Manuscripts are preferably received by email ([ad@arts.gla.ac.uk](mailto:ad@arts.gla.ac.uk)). Alternatively, a floppy disk or CD and hardcopy may be sent to: Archaeological Dialogues, Archaeological Institute, Free University, De Boelelaan 1105, 1081 HV Amsterdam, the Netherlands.

Authors are solely responsible not only for the contents of their manuscripts, but also for securing any legal rights or permissions to publish submitted material, including copyright-protected materials. The appropriate acknowledgements should be given in captions, endnotes, or elsewhere. Manuscripts should not be submitted to (nor should they have been published in) any other journal or publication.

See <http://uk.cambridge.org/journals/ard> for an extended version of the guidelines for contributors.

This journal issue has been printed on FSC-certified paper and cover board. FSC is an independent, non-governmental, not-for-profit organization established to promote the responsible management of the world's forests. Please see [www.fsc.org](http://www.fsc.org) for information.

Archaeological Dialogues is indexed in the Thomson Reuters Arts and Humanities Citation Index



# Archaeological dialogues

## discussion article

- 145 **Rethinking emotion and material culture**  
*Oliver J.T. Harris and Tim Flohr Sørensen*
- 164 Emotional aspects of a fen *Åsa Berggren*
- 167 The matter with emotions *Susan Kus*
- 172 Those obscure objects of desire *Adam T. Smith*
- 176 Emotion reified. Lessons from the archaeology  
of ritual *Edward Swenson*
- 183 Pale reflections *Sarah Tarlow*
- 186 Talk about the passion *Oliver J.T. Harris*  
*and Tim Flohr Sørensen*

## interview

- 199 Different languages. An interview on archaeology in  
Germany with Friedrich Lüth *Alexander Gramsch*

## note

- 215 Beyond externalism. Exploring new directions in the  
history of archaeology *Oscar Moro Abadía*
- 237 List of contributors

Cambridge Journals Online  
For further information about this journal  
please go to the journal website at:  
[journals.cambridge.org/ard](http://journals.cambridge.org/ard)



**Mixed Sources**

Product group from well-managed  
forests and other controlled sources  
[www.fsc.org](http://www.fsc.org) Cert no. SA-COC-1527  
© 1996 Forest Stewardship Council

**CAMBRIDGE**  
UNIVERSITY PRESS