

NOTES FOR CONTRIBUTORS

Contributions for publication should be addressed to The Editors, *Geological Magazine*, Department of Earth Sciences, Downing Street, Cambridge CB2 3EQ, England, or may be submitted through a member of the Editorial Advisory Board (addresses inside front cover). Rapid Communications should be clearly marked as such on the envelope. Submission implies that the manuscript has not been published previously nor currently submitted for publication elsewhere. Upon acceptance of a manuscript, the author will be asked to transfer copyright to the publisher.

All contributions, whether articles, correspondence or reviews, must be sent in triplicate and typed on one side of the paper, with wide margins and double-line spacing throughout. Any minor corrections should be made neatly in the typescript, leaving the margins clear. Contributions should follow the general style of papers in recent issues of the *Magazine*. The author is invited to nominate up to five possible referees, who will not necessarily be used.

Articles must be accompanied by a brief, informative rather than indicative, abstract. Headings should be set out clearly but not underlined. Primary headings should be in lower case, at margin, with arabic numeral; subheadings should be numbered 2.a., 2.b., etc., and tertiary headings 2.a.1., 2.a.2. No cross-references should be given by page number, but 'above' and 'below' should be used with the section specified, e.g. Section 2.a.2. The SI system of units should be used. The author should mark in the margin of the manuscript where figures and tables may be inserted. References to points in larger works should, where possible, quote the page reference, e.g. Ager, 1981, p. 102. Authors alone are responsible for the correctness of their references.

Rapid Communications should follow the style of articles and must be no more than four printed pages of the *Magazine* (approximately 5000 word-equivalents) including an abstract of no more than 100 words. These contributions will be dealt with by a streamlined schedule and should appear within six months from receipt. To meet this schedule, authors will be required to make revisions with minimal delay.

Discussions of papers which have already appeared in the *Magazine* are welcomed, subject to the four-page limit.

Tables should be typed with double-line spacing on sheets separate from the running text. Each table must have a caption that will make the data in the table intelligible without reference to the text.

Illustrations should be submitted at 1½ × size to be published. The Author's name and figure number should be clearly marked on the

back of each piece of artwork. Figures will preferably be either single column (80 mm) or double column (169 mm) width when printed. The height of figure can vary in either width up to full print area height (240 mm). Illustrations should have scale bars, not '× 40'. Redrafting may be required by the editors if major savings in print area can be achieved without loss of information. **Detailed maps or multiple logs** may well require a whole page and the size of the lettering should match the necessary reduction. Where necessary break a figure into two facing pages; **folding figures** will not be accepted. **Landscape figures** should have no lettering upside down on the final printed page. Avoid where possible gross disparities in lettering size on the drawing. See figure below for optimum size of original and final lettering size. Boxes of ornament should be explained within the figure, not in the caption. Figures composed of **photographs** should be glossy prints presented at publication scale. Each component part should be named with a lower-case letter and given a scale bar. Photographic artwork is numbered as part of the sequence of figures, not as separate plates. The *Magazine* will be able to publish a limited number of free colour plates each year; the editors will decide which plates to accept on their scientific merit. Authors submitting colour plates are asked to give detailed reasons why colour is necessary. Duplicates of illustrations should be sent, and may be prints or, preferably, photocopies reduced to final size. Figure captions must be typed with double-line spacing on sheets separate from the running text.

References must be double-spaced and spelt out in full, e.g. BROOKS, M. & JAMES, D. G. 1975. The geological results of seismic refraction surveys in the Bristol Channel, 1970–73. *Journal of the Geological Society, London* 131, 163–82.

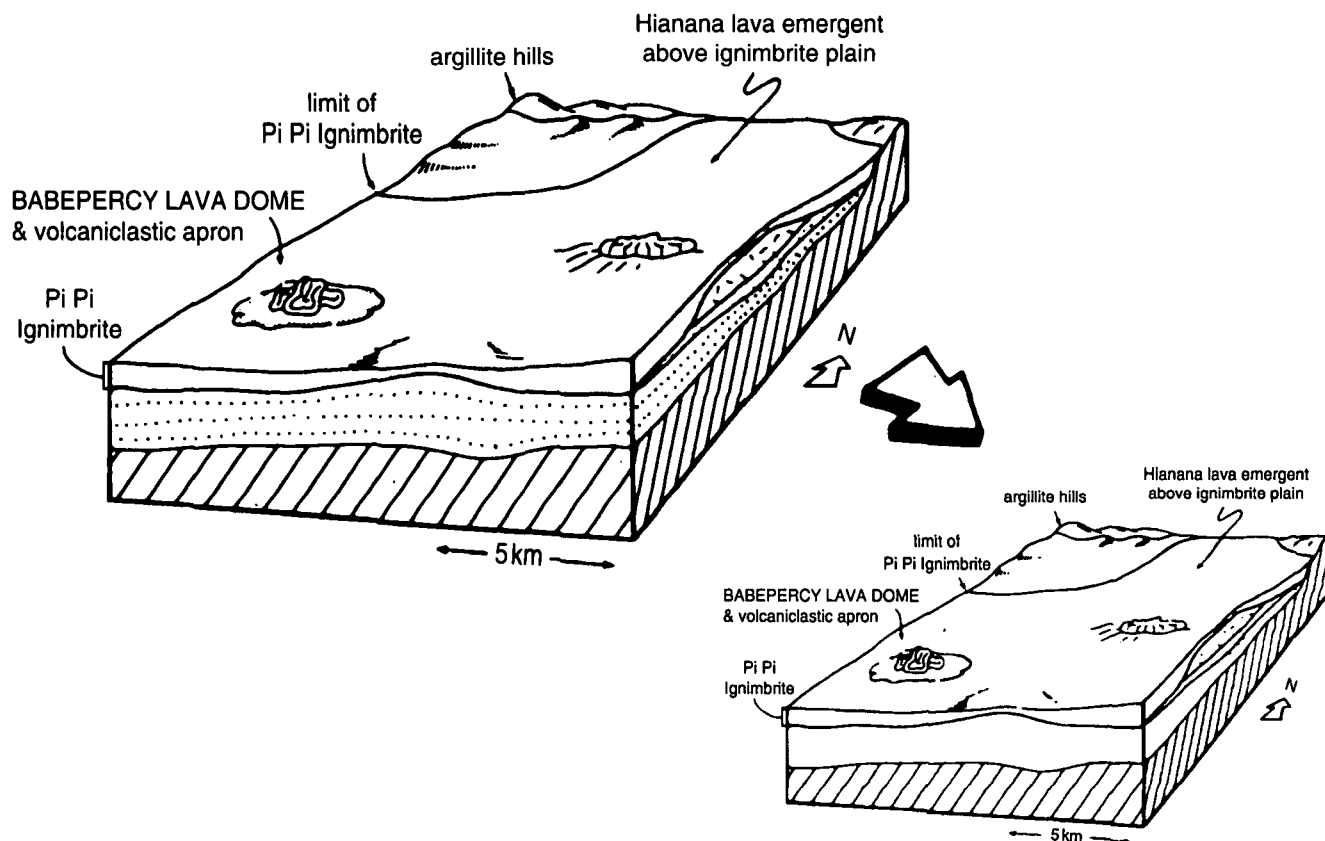
Books should be cited as:

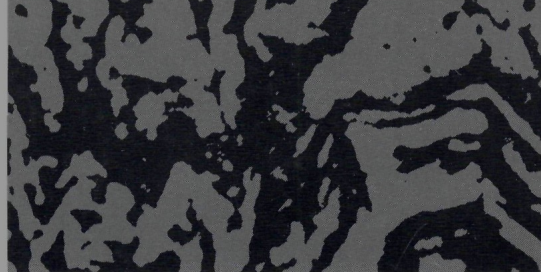
AGER, D. V. 1981. *The Nature of the Stratigraphical Record*, 2nd ed. London: Macmillan, 122 pp.

BOTT, M. H. P. 1973. The evolution of the Atlantic north of the Faroe Islands. In *Implications of Continental Drift to the Earth Sciences*, vol. 1 (eds D. H. Tarling and S. N. Runcorn), pp. 175–89. London, New York: Academic Press.

Unpublished work should normally be referred to in the text in parentheses as, for example, 'private communication' or 'unpub. Ph.D. thesis, Univ. London, 1988', and not included in the reference list unless in the press.

Fifty offprints of each paper will be provided free of charge. Additional offprints may be purchased according to a set scale of charges if ordered when the proofs are returned.





VOLUME 131

NUMBER 5

SEPTEMBER 1994

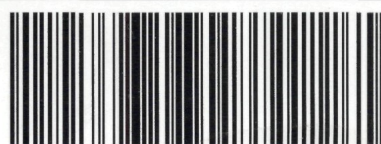
Geological Magazine

CONTENTS

- The Kunene complex, Angola/Namibia: a composite massif-type anorthosite complex
ASHWAL, L. D. & TWIST, D. 579–591
- Magnetic remanence in the Chalk of eastern England: an unusually resistant VRM?
BORRADAILE, G. J. 593–608
- Origin and environment of formation of late diagenetic dolomite in Cretaceous/Tertiary chalk, North Sea Central Graben
MALIVA, R. G. & DICKSON, J. A. D. 609–617
- Structural data from drill core
LOPEZ-DIAZ, F. & BASTIDA, F. 619–623
- The last stages of dinosaur faunal history in Europe: a succession of Maastrichtian dinosaur assemblages from the Corbières (southern France)
LE LOEUFF, J., BUFFETAUT, E. & MARTIN, M. 625–630
- Late Cenozoic basin development in west Turkey: Gördes basin tectonics and sedimentation
SEYİTOĞLU, G. & SCOTT, B. C. 631–637
- Magmatic and solid state deformation partitioning in the Ox Mountains granodiorite
McCAFFREY, K. J. 639–652
- Pliocene–Pleistocene fluvial/wave-dominated deltaic sedimentation: the Pamisos delta, southwest Peloponnesus, Greece
ZELILIDIS, A. & KONTOPOULOS, N. 653–668
- Intra-Ordovician deformation in southeast Ireland: evidence from the geological setting, geochemical affinities and U–Pb zircon age of the Croghan Kinshelagh granite
GALLAGHER, V., O'CONNOR, P. J. & AFTALION, M. 669–684
- Slump-fold and palaeoslope orientations in Upper Silurian rocks, North Wales
EVA, S. J. & MALTMAN, A. J. 685–691
- REVIEWS 693–711
- PUBLICATIONS RECEIVED 713

Printed in Great Britain by the University Press, Cambridge

CAMBRIDGE
UNIVERSITY PRESS



0016-7568(199409)131:5;1-Y